

# Gym Parking Case Study

# Santaquin Requirements

- Required parking for the site location: ½ Gym ½ Warehouse & Office Space
- Currently have 39 spots
- Proposed gym is 9,000 sq ft = 93 spots
- Warehouse needs 8 spots
- Occupant load of proposed gym is 186 occupants

# of Stall per Occupant	# of Parking Stalls	Additional Required
2	101	62
3	70	31
4	55	16
5	46	8

# Anytime Fitness Springville

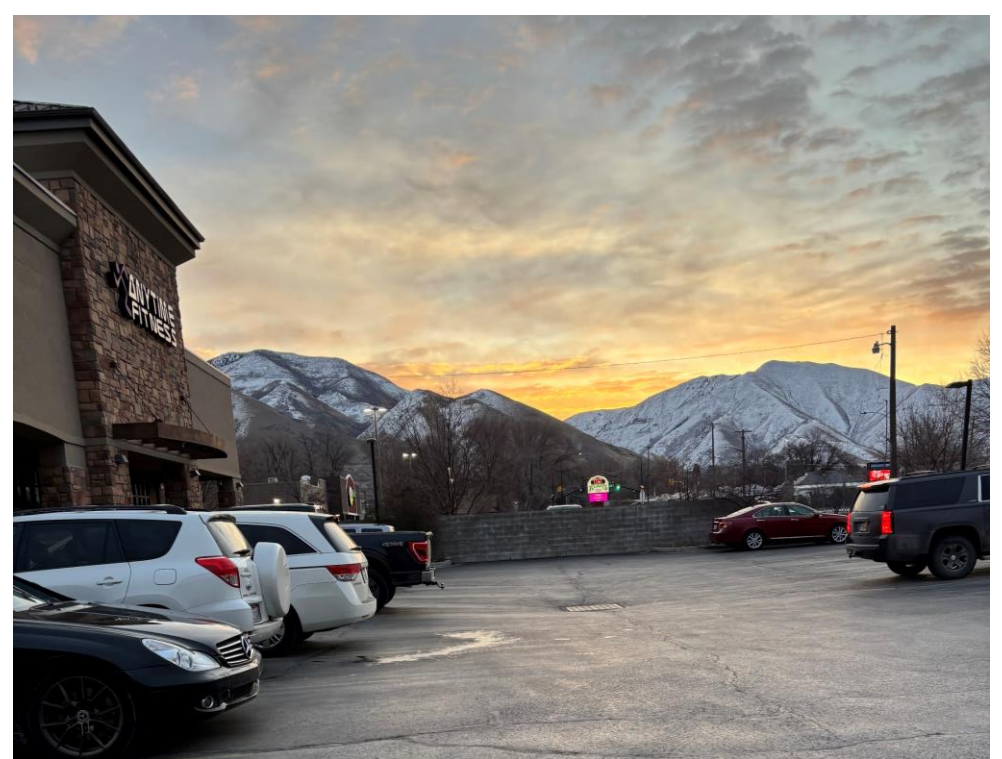
- Approx 20 spots
- 8,000 sq ft
- Share parking with Papa Murphy's, Tree House Learning Art Center, Orion, Bear River Mutual, Sanaa Studios, Chromotherapy, Direct Insurance.

# Midday Wed 2/12





# Morning Thurs 2/13





# Morning Tues 2/18



# Bending Iron Gym – Spanish Fork

- Approx. 60 spots
- Shares parking with Disaster Plus, Zab Translation Solutions, Two Bros Auto Glass, Warner & Associates Construction
- Industrial zone



# Midday Wed 2/12





# Morning Thurs 2/13





# Morning Tues 2/18



# 180 Fitness - Salem

- Approx. 90 spots
- Shares parking with Division of Child and Family Services, Swan Smiles & Orthodontics, Creekside RV Repair, Salon De La Paz, Omega Martial Arts, CCBank, and many others.



Midday  
Wed  
2/12





# Evening Wed 2/12





# Morning Thurs 2/13





# Fitclub - Salem

- Approx. 18 spots
- Approx. 3,600 square feet
- Individual parking lot

# Midday Wed 2/12

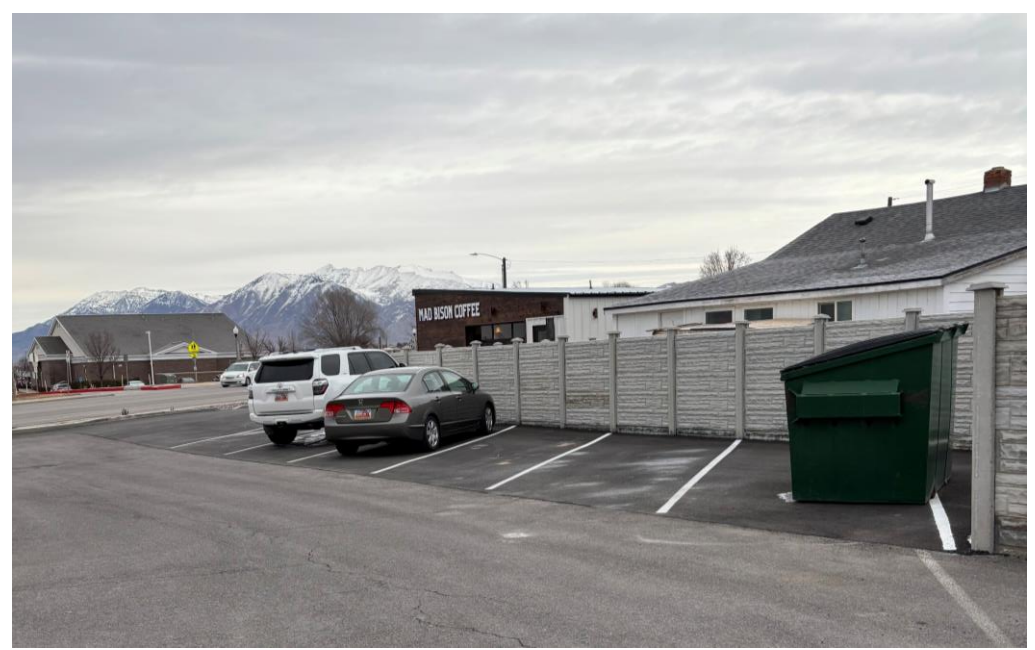


# Evening Wed 2/12





# Morning Thurs 2/13



# Total Fitness - Payson

- Approx 12,000 sq ft required to have 60 spots
- Approx. 35 spots
- Payson City overflow parking for Main Street in the back



Midday  
Wed  
2/12





# Morning Thurs 2/13





# Morning Tues 2/18





# Midday Tues 2/18

