

State of Utah

Community Wildfire
Preparedness Plan
For the Wildland – Urban Interface

Santaquin

Is a city in Utah County, Utah.



2026



Department of Natural Resources
Division of Forestry, Fire and State Lands
1594 W North Temple, PO Box 145703, Salt Lake City, UT 84114-5703

Santaquin Wildfire Preparedness Plan

INTRODUCTION

Over 600 of Utah's communities have been classified as "at risk" of wildfire. The safety of the citizens of any community and the protection of private property and community infrastructure is a shared responsibility between the citizens; the owner, developer, or association; and the local, county, state and federal governments. **The primary responsibility, however, remains with the local government and the citizen/property owner.**

The purpose of wildfire protection planning is to...

- Motivate and empower local government, communities, and property owners to organize, plan, and take action on issues impacting the safety and resilience of values at risk.
- Enhance levels of fire and smoke resilience and protection to the communities and infrastructure
- Identify the threat of wildland fires in the area.
- Identify strategies to reduce the risks to structures, infrastructure, and commerce in the community during a wildfire.
- Identify wildfire hazards, education, and mitigation actions needed to reduce risk.
- Transfer practical knowledge through collaboration between stakeholders toward common goals and objectives.

Outcomes of wildfire protection planning...

- Achieve the National Cohesive Wildfire Strategy Goals:
1. Resilient Landscaped 2. Fire Adapted Communities 3. Safe and Effective Wildfire Response
- Improve community safety through:
 - ✓ Coordination and collaboration
 - ✓ Public awareness and education
 - ✓ Fuel modification
 - ✓ Improved fire response capabilities
 - ✓ Fire prevention
 - ✓ Development of long-term strategies

RESOURCES

To complete a wildfire protection plan for your community, consider involving the following:

- ✓ Local / Primary fire protection provider
- ✓ Local Resource, Conservation and Development Districts
- ✓ Utah Division of Forestry, Fire and State Lands
- ✓ Utah State Fire Marshal (Dept. of Public Safety)
- ✓ Utah Division of Emergency Management
- ✓ Local fire agencies
- ✓ Utah Division of Air Quality
- ✓ Local emergency management services
- ✓ USDA Forest Service
- ✓ U.S. Department of Interior Agencies
- ✓ Utah Resource Conservation Districts
- ✓ Utah Soil Conservation Districts
- ✓ Local health departments

Santaquin Wildfire Preparedness Plan

PLANNING OVERVIEW

Briefly describe the overall planning process that took place to complete this plan. Be sure to include:

- *A timeline of the events/meetings*
- *The organizations and partners that participated*
- *A description of why this planning process was initiated*
- *The overall intended outcome of the process.*
- *How outcomes were accomplished. This is much like the information described above (purpose and outcome) but tailored to your community.*

If desired, please acknowledge any individuals or organizations that were essential to accomplishing the final plan.

April 28, 2025 - This new Draft on the latest state CWPP template was opened to help align with the CWS system and streamline processes.

September 29, 2025 - FFSL WFA staff M.Swinsick and J.Roach made a site visit to Santaquin to discuss CWS mapping and updating this Draft CWPP.

February 26, 2026 - M.Swinsick reviewed the plan. It is being sent to Justin Roach and Jennifer McBride for their review and approval.

Santaquin Wildfire Preparedness Plan

PART I COMMUNITY DESCRIPTION

Community Attributes
<p>Location of Community</p> <p>Santaquin City is located adjacent to the Cache National Forest to the east, Genola to the west, Juab County to the south, and Payson to the north. (A portion of Forest Service/UT Division of Wildlife land is located to the east.)</p>
<p>Roads, Bridges, Gates, and Culvert Conditions</p> <p><i>List problem areas and consider labeling them on an attached map.</i></p> <p>There are at least two primary routes out of Santaquin City. SR-6 (Santaquin Main Street) runs east/west and divides the city into north and south sections. On the east side of Santaquin, SR-6 intersects with SR-198 at the point where Santaquin Main Street meets SR-198. SR-198 runs north, connecting Santaquin with the Spring Lake and Payson City communities. Interstate-15 also runs north/south along the eastern edge of Santaquin, providing a major evacuation and transportation route. All roads are clearly marked with reflective metal signs. Access to Santaquin Canyon is controlled by a U.S. Forest Service gate that is open seasonally during the spring and summer months. The gate is typically locked in late fall and reopened around Memorial Day, weather permitting. Pole Canyon also has a US Forest Service gate, which is not accessible by the Fire department. Exit 242, there is a DNR/PacifiCorp gate that is not accessible to the Fire Department. The Gray Cliffs development also has a construction gate, which is accessible to the Fire department. All roads provide sufficient space for emergency vehicles to safely turn around. Vegetation does not pose a concern or obstruction during evacuation operations. All bridges are rated to support emergency equipment. Culverts can easily be crossed by emergency equipment.</p>
<p>Structural Ignitability Concerns</p> <p><i>Provide a comprehensive description of existing conditions that contribute to home ignition due to wildfire:</i></p> <p>Santaquin, Utah, faces a severe risk of wildfire, with 100% of its properties estimated to have some risk of impact over the next 30 years. The city's risk is higher than 96% of communities in the United States, based on data compiled by the USDA Wildfire Risk Portal, driven by a combination of rapid development into the wildland-urban interface (WUI), hazardous vegetation, dry climate conditions, and challenging topography.</p> <p>Existing conditions contributing to home ignition in Santaquin include:</p> <p>1. Vegetation and Fuels (Wildland-Urban Interface)</p> <ul style="list-style-type: none"> • High-Risk WUI Areas: Many homes are built directly into or adjacent to wildland vegetation (Dry Mountain area), making them susceptible to direct flame contact and high-intensity fires. • Flashy Fuels and Cheatgrass: The wildland landscape is dominated by dry grasses and sagebrush, particularly invasive cheatgrass, which dries out early in the summer and allows fires to spread rapidly. • Gambel Oak/Maple: Dense, contiguous patches of Gambel Oak and maple are common, which can produce intense, high-energy fires.

Santaquin Wildfire Preparedness Plan

Community Demographics	
Approximate number of homes	5,369
Approximate number of lots	6,336
Approximate number of commercial entities	110
Approximate number of full-time residents	18,500 (2025 est.)
Approximated number of part-time residents	NA
<i>Notes/comments:</i>	

Population Concerns
<p>Potentially vulnerable populations may experience difficulty preparing for and responding to wildfire.</p> <p>Vulnerable populations in Santaquin, Utah, facing higher risks during wildfires and prolonged smoke include individuals over 65, those with chronic heart/lung conditions (e.g., asthma, COPD), people with disabilities, and low-income residents. These groups may have limited mobility or resources for evacuation and are more susceptible to respiratory issues from poor air quality.</p> <p>Key Vulnerable Populations in Santaquin</p> <ul style="list-style-type: none"> ● Respiratory & Health-Compromised Groups: Individuals with asthma, COPD, cardiovascular disease, or those recovering from COVID-19 are highly vulnerable to fine particulate matter from smoke. ● Older Adults & Children: Individuals over 65 and young children have lower physiological resistance to smoke-induced health complications. ● Mobility-Impaired & Elderly: Residents with limited mobility or lacking personal transportation may face significant challenges if ordered to evacuate. ● Economically Disadvantaged: Households with limited financial resources may struggle with temporary relocation, home hardening, or accessing air filtration resources. ● Language-Barrier Populations: Individuals who do not speak English as a primary language may face challenges in receiving or understanding emergency notifications. <p>Risk Factors During Smoke Episodes</p> <ul style="list-style-type: none"> ● Air Quality: Prolonged wildfire smoke significantly elevates risks for respiratory distress. ● Evacuation Difficulties: Individuals relying on assisted living, lacking vehicles, or living in areas with limited exit routes are at higher risk. ● Worker Exposure: Outdoor workers are particularly exposed to harmful air quality, requiring specialized protection like N95 masks. <p><u>Wildfire Risk to Communities Portal</u> - click on <i>Explore</i> - Enter community name - click on <i>Vulnerable Population Tab</i></p> <p>Community Evacuation Plan should be attached as Appendix A</p>

Santaquin Wildfire Preparedness Plan

PART II:

RISK ASSESSMENT

Community Values at Risk

Define community values that would be threatened by wildfire, (infrastructure, watershed, forest, wildlife, and other values) and the conditions of the infrastructure/homes at a broad scale. It is highly encouraged that you consult a local, federal, or state entity and/or a wildfire mitigation specialist to assist you. [Forestry, Fire and State Lands contact information](#)

Wildfires threaten Santaquin's values by endangering homes, vital infrastructure (roads, power), watersheds (water quality/supply), forests (timber, recreation), wildlife (habitat loss), and community well-being (air quality, evacuation risks). Broadly, Santaquin's interface with wildlands means homes face ember and flame risk, requiring defensible space, while degraded forest conditions (fuels, invasive grasses) increase fire intensity, affecting all values, with vulnerable populations and inadequate water supply exacerbating hazards.

Community Values Threatened by Wildfire

- Infrastructure & Homes: Risk to buildings from flames and embers, damaging utilities (power lines), roads (access/evacuation), and critical services, increasing costs.
- Watershed: Burned soil leads to erosion, sediment, and pollution in streams, impacting water quality, reservoir capacity, and drinking water for the region.
- Forests: Loss of timber resources, increased insect/disease risk, reduced recreational opportunities (hiking, hunting), and habitat fragmentation.
- Wildlife: Habitat destruction, increased mortality, disruption of migration, and impacts on food/water sources.
- Public Health & Welfare: Poor air quality from smoke, displacement, stress, and potential loss of life.
- Economic Values: Costs for firefighting, suppression, recovery, and potential decline in property values.

Conditions in Santaquin (Broad Scale)

- Wildland-Urban Interface (WUI): Santaquin's location means homes are built into or near wildland areas, increasing exposure.
- Fuel Accumulation: Dry grass (like cheatgrass) and woody debris create easily ignitable conditions, increasing fire intensity.
- Vulnerable Homes: Many homes have combustible materials or lack adequate defensible space, making them susceptible to ember ignition.
- Evacuation Challenges: Steep terrain and limited access can complicate rapid, safe evacuations.
- Water Supply: Inadequate water systems in rural interfaces can hinder firefighting efforts.

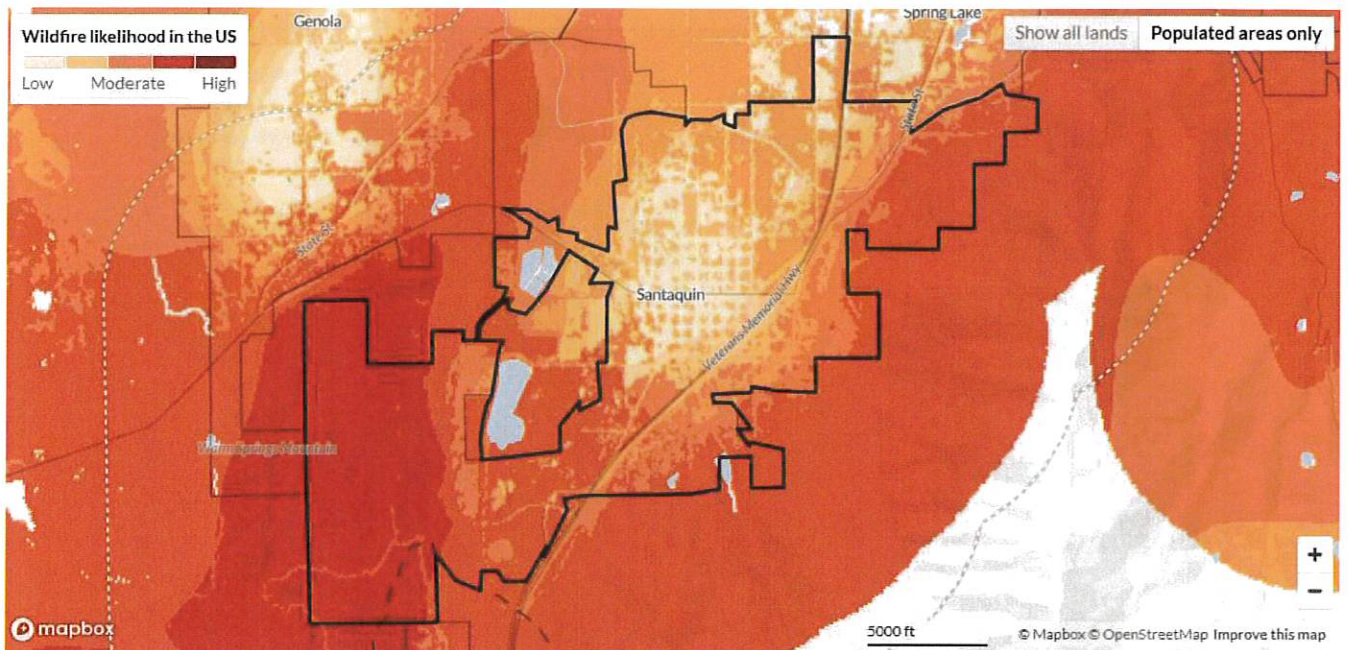
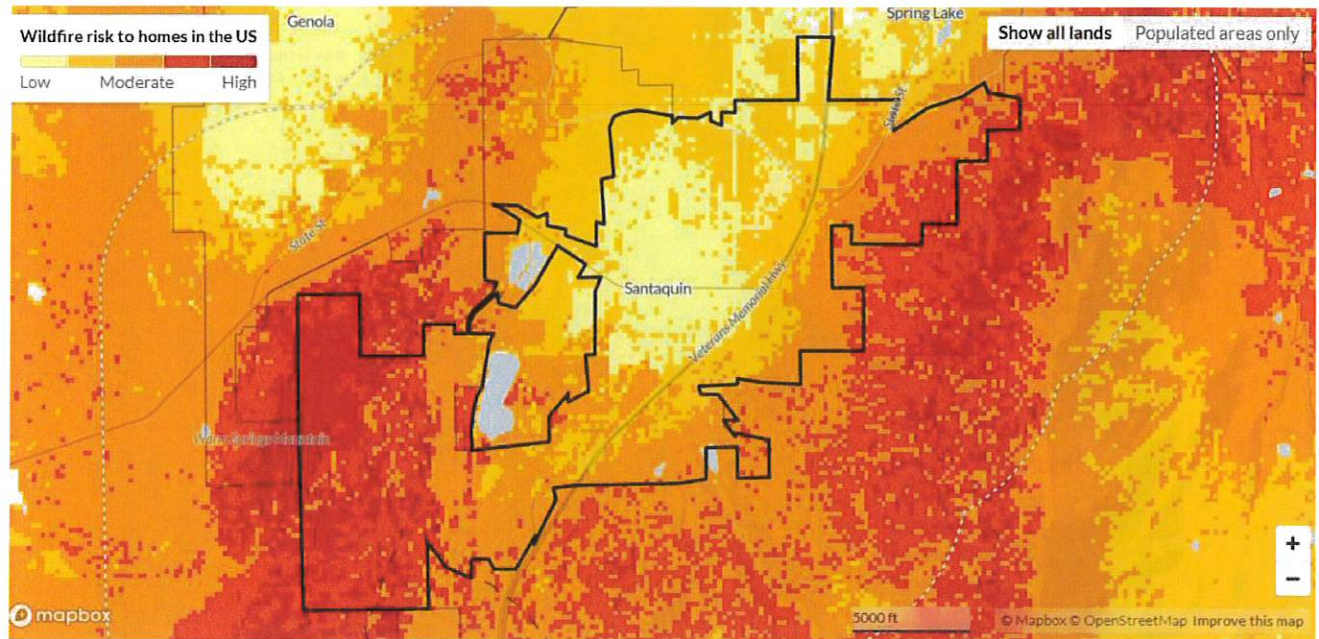
Santaquin Wildfire Preparedness Plan

The Communities at Risk (CARs) list and relative wildfire risk score was developed cooperatively at the local and state level to assist land management agencies and other stakeholders in determining the scope of the WUI challenge and to monitor progress in mitigating the hazards in these areas. The CARs list and score is updated through the interagency fuel groups. Input the fields that are reflected on the state list found on our website. [Communities at Risk Score](#)

Communities At Risk Score (CARS)	
Score:	8

Area Fire History			
Month/Year of fire	Ignition point	Ignition source	Acres burned
9/2020	Goshen Fire	N/A	372
8/2020	William Fire	Human/Shooting	6000
9/2025	Grandpas Cave	Incendiary	9

Santaquin Wildfire Preparedness Plan



Santaquin Wildfire Preparedness Plan

PARTNERSHIPS AND COLLABORATION

In detail, what are the wildfire mitigation priorities for your community? Describe how the community is coordinating with partners and adjoining agencies identified in this document. (This section can be added to as new projects and partners are developed. Community buy-in, and desires to support and move these projects forward, is critical to overall success.)

Santaquin, Utah, actively engages in partnerships and collaboration for wildfire mitigation, heavily relying on a Community Wildfire Protection Plan (CWPP) and participation in the Utah Cooperative Wildfire System (CWS) to protect its wildland-urban interface (WUI). The city coordinates with local, state, and federal agencies to implement fuel treatments and enhance community preparedness.

Wildfire Mitigation Priorities for Santaquin

Recent hazard mitigation planning, Santaquin's priorities focus on reducing hazardous fuels and improving structural resistance to fire:

- Fuel Reduction in High-Risk Areas: A major 2025 priority involves mitigation and ingress/egress work for the Grey Cliffs Development to ensure safe evacuation and emergency access.
- Maintenance of Existing Fuelbreaks: Ongoing efforts include maintaining, widening, and improving existing fuelbreaks (some roughly 240 acres) that are filling in with new growth.
- Green-Stripping: Implementing "green-stripping" techniques (e.g., using forage kochia) to reduce flammable vegetation in strategic areas, particularly along the freeway corridor.
- Defensible Space Education: Educating homeowners on creating defensible space, removing dead wood, and reducing flammable vegetation on private property.
- Adoption of WUI Codes: Enforcing Utah's Wildland-Urban Interface (WUI) code for new construction and managing vegetation around existing structures.

Coordination with Partners and Agencies

Santaquin coordinates through a collaborative, multi-agency approach:

- Utah Division of Forestry, Fire and State Lands (FFSL): As part of the Cooperative Wildfire System (CWS), Santaquin signs a 5-year cooperative agreement with FFSL, committing to annual mitigation actions.
- Utah County & State Agencies: Collaboration includes the Utah Division of Wildlife Resources (DWR) for managing risks on state-managed land, such as the Santaquin Wildlife Management Area (WMA).
- Federal Agencies: Cooperation with the U.S. Forest Service (USFS) is essential for cross-boundary fuel treatments, especially on adjacent national forest land.
- Local Partners: The city works with Rocky Mountain Power for utility corridor maintenance and engages directly with residents and homeowner associations in the WUI zone.

Key 2025 Projects & Community Buy-in

- 2025 Proposed Action (\$15,000 estimated value): Specific focus on Grey Cliffs development mitigation.

Santaquin Wildfire Preparedness Plan

Describe how you have coordinated with partners/adjoining agencies on past projects and fuels treatments (What you have accomplished and who performed the work.)

Past Accomplishments	
Prevention- Activities directed at reducing unplanned, human caused, fire ignitions, including public education, law enforcement, personal contact.	<ul style="list-style-type: none"> Delivered Fire Adapted Community information to residents in 2017, 2018, and 2019. Discussed with residents and delivered defensible space information to residents in 2017, 2018, and 2019. Formed an active CWPP committee with the fire department and FFSL 2020.
Preparedness- Activities that lead to a state of response readiness to contain the effects of wildfire to minimize loss of life, injury, and damage to property. Including access to home/community, combustibility of homes/structures and creating survivable space.	<ul style="list-style-type: none"> 2014 Santaquin Fire Plan Completed an updated Community Wildfire Protection Plan (CWPP) in 2020 Wildfire equipment inventory, radio purchases for improved communication and safety, fire engine purchases and retrofits to improve wildfire response 2020 Training in wildland firefighting including S-190, S-130 and chainsaw training. 2017, 2018, 2019, and 2020
Mitigation- Actions that are implemented to reduce or eliminate risks to persons, property or natural resources including fuel treatments and reduction.	<ul style="list-style-type: none"> Secured a \$155,000 USFS Healthy Forest Restoration Grant in 2015 to install initial fuel break City is in the process of performing lot assessment for improved mitigation, response and community involvement 2017, 2018, 2019, and 2020
Maintenance- The process of preserving actions that have occurred including fuel treatments and reduction.	<ul style="list-style-type: none"> Upkeep of implemented fuel break by Santaquin City 2018, 2019, and 2020 Ongoing community education for defensible space and risk reduction purposes

Santaquin Wildfire Preparedness Plan

PREPAREDNESS			
<i>Activities that lead to a state of response readiness to contain the effects of wildfire to minimize loss of life, injury, and damage to property. Including access to home/community, combustibility of homes/structures and creating survivable space.</i>			
Action(s):	Timeline:	Entity or Community Lead:	Completion Date:
PS1: Wildland firefighter training in conjunction with FFSL	Ongoing	SFD/FFSL	2031
PS2: Lot Assessments for defensible space	Ongoing	SFD/FFSL	2031
PS3: Electronic Defensible space communication	2026-2030	SFD	2031
PS4: Community Outreach meetings on HB48	Ongoing	EM, Fire Chief, County, FFSL	2031
PS5: Identify needs of full-time and seasonal fire and fuel crews	Annually	SFD/UTC	2031
<i>Notes, updates, measured outcomes, and monitoring</i>			

MITIGATION			
<i>Actions that are implemented to reduce or eliminate risks to persons, property or natural resources including fuel treatments and reduction.</i>			
Action(s):	Timeline:	Entity or Community Lead:	Completion Date:
M1: Create a fire break on the East bench	2026-2030	SFD/FFSL	2031
M2: Work with FFSL and develop a MOU with the State for fuel mitigation on the Forest boundary.	2026-2030	SFD/FFSL	2031
M3: Work with FFSL in having a community chipping project	2026-2030	SFD/FFSL	2031
M4:			
<i>Notes, updates, measured outcomes, and monitoring</i>			

Santaquin Wildfire Preparedness Plan

PART IV: CONTACTS

Community Planning Committee - Member List			
The contacts in this part identify community resources that can be used to complete the goals of the plan.			
Name	Affiliation	Phone Number	E-mail
Ryan Sharp	LDS Church, East Stake	801-830-6973	ryan_sharp@byu.edu
Bill Morgan	LDS Church, North Stake	801-857-0227	wmwmorgan@gmail.com
Spencer Johnson	LDS Church, Santaquin Stake	918-960-0825	sjohns137@gmail.com
Ryan Lind	Santaquin Fire Chief	801-310-5309	rlind@santaquin.gov
Chris Lindquist	Santaquin Emergency Mgr.	801-319-6439	clindquist@santaquin.gov
Mike Swinsick	WFA WUI Coordinator	801-678-1655	mswinsick@utah.gov
Garrett Nielsen	FFSL UTC Fire Warden	385-290-0670	glnielsen@utah.gov

Key Stakeholder Contacts				
Individuals who live/work in the community, tribe(s), entities that manage infrastructure, schools and other public facilities, those who provide emergency response (fire/police, etc.), land managers (federal, such as U.S. Forest Service (USFS) and U.S. Department of the Interior (DOI), and state and local representatives, etc.), 4-H groups, faith-based groups, resource conservation districts, media and anyone who is interested/or would be affected by a wildfire emergency.				
Organization	Title	Contact Person	Phone Number	E-mail
Apple Valley Elementary	Principal	Sydney Sharp	801-754-9028	sydney.sharp@nebo.edu
CS Lewis Academy	Interim Director	Devin Leavitt	801-754-3376	dleavitt@cslewisacademy.net
Orchard Hills Elementary	Principal	Penny McEntire	801-754-3237	penny.mcentire@nebo.edu
Santaquin Elementary	Principal	Jessica Ribble	801-754-3611	jessica.ribbon@nebo.edu
BLM WDD				
USFS UWC NF	SZ Fuels AFMO	Guy Wilson	801-798-5142	guy.wilson@usda.gov

Santaquin Wildfire Preparedness Plan

APPENDIX

Appendix A: Community Wildfire Evacuation Plan

Narrative: This plan will be used by the community as a framework for a safe, coordinated effort to evacuate members in the event of a wildfire. The strategies can include but are not limited to 1) A coordination structure to determine who will be in charge, and who the key contacts are, 2) An emergency communications strategy to inform officials and the community, 3) Traffic control measures, (be sure to think about utilizing all modes of transportation including existing transit, walking, biking, e-scooters), and 4) A plan to ensure disadvantaged and vulnerable populations have the resources to evacuate.

Insert plan link here:

Appendix B: (*Optional) Community Smoke Mitigation Plan

Narrative: This plan will be used by the community to address what strategies can be followed to keep the community safe in the event the air quality downgrades to unhealthy levels due to smoke caused by wildfires. The strategies can include but are not limited to 1) Understanding the vulnerable demographics within the community, 2) Strategy on how to inform community members of wildland fire smoke risks. 3) Strategy on how communities/community members can prepare for low air quality days e.g.: Designing a clean room in the house where air is filtered, having an air filtration plan for the whole building/house, creating a clean air space in the community, addressing air filtration in schools, or attaining a cache of air filters to loan out to vulnerable populations etc. Smoke Ready Resources can be found here, [Community Fire Planning](#).

Insert plan link here:

Appendix C: Restricting Covenants and Ordinances

Narrative: Here is the link to the [Santaquin Municipal Code](#) page. See Chapter 4 for Public Health and Safety

Appendix D: UWRAP Report

Narrative: Here is the link to the [Santaquin AOI Risk Summary Report](#) generated by M.Swinsick from UWRAP on 9/10/2025. Here is the link to the [Santaquin Profile of Risk Report](#) generated from Headwaters Economics Economic Profile System on 1/29/2025.