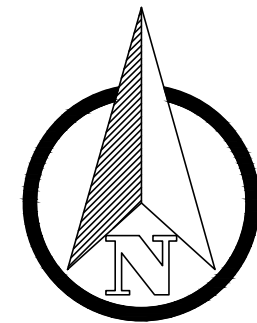


E:\Prof\Santaquin Summit Parkway-Number\08-Dwg\Sheets\Summit Ridge Sub Plat-Amendment_Final.dwg



33 34
4 3
FOUND BRASS CAP
MONUMENT

SECTION LINE
BASIS OF BEARING
N89°30'24"E 2649.01

34
3
FOUND BRASS CAP
MONUMENT

S00°30'52"E
163.68'

ROWLEY'S SOUTH RIDGE FARMS INC.
PARCEL 32:009:0006

34 35
3 2
CALCULATED POSITION
PER CORNER RECORD
44.72 RC

SANTAQUIN PEAKS INDUSTRIAL PARK - AMENDED

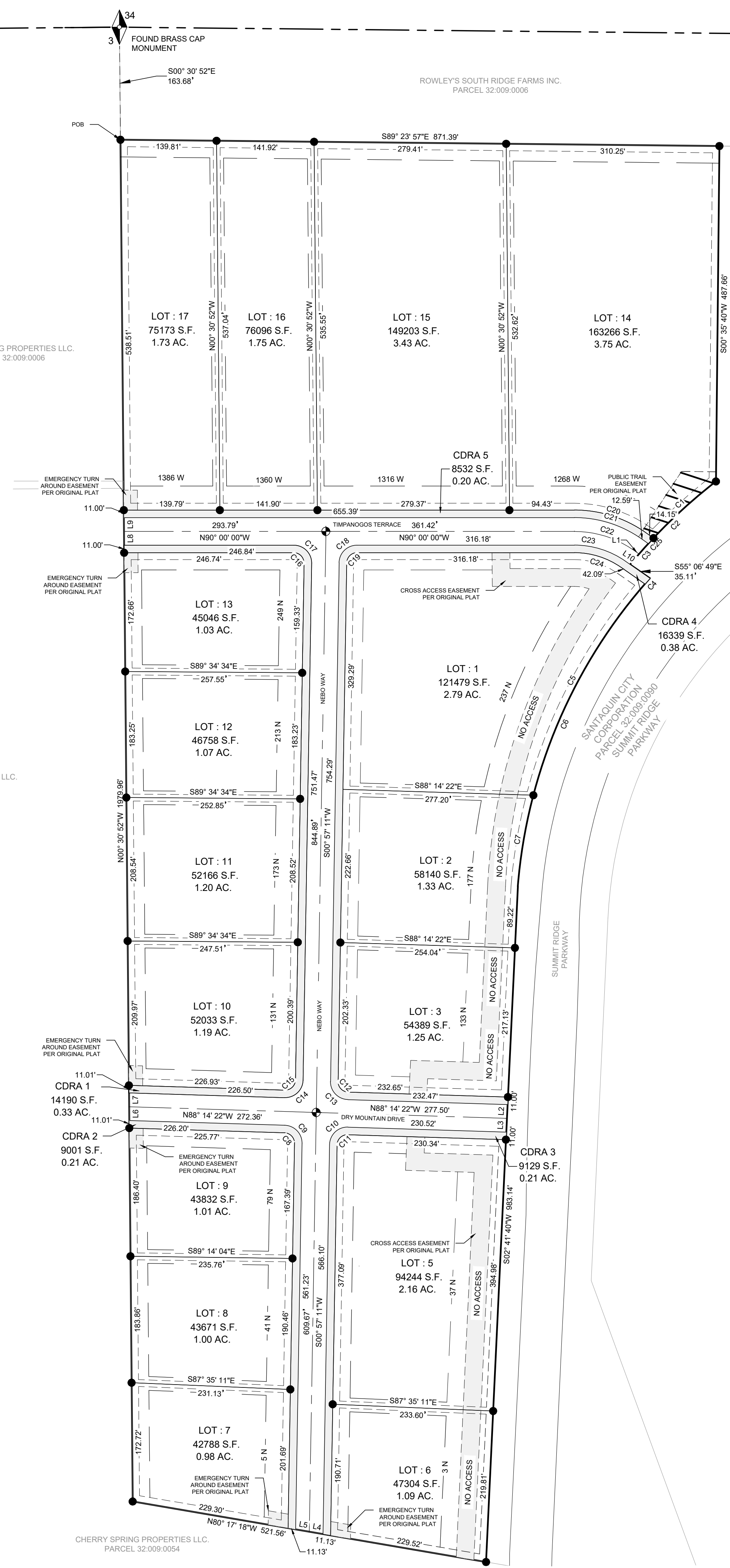
LOCATED IN THE:
THE NORTHEAST QUARTER OF SECTION 3, TOWNSHIP 10 SOUTH, RANGE 1 EAST
SALT LAKE BASE AND MERIDIAN,
UTAH COUNTY, UTAH

CHERRY SPRING PROPERTIES LLC.
PARCEL 32:009:0006

CHERRY SPRING PROPERTIES LLC.
PARCEL 32:009:0071

CHERRY SPRING PROPERTIES LLC.
PARCEL 32:009:0054

SANTAQUIN CITY
CORPORATION
PARCEL 32:009:0090
SUMMIT RIDGE
PARKWAY



Curve Table					
Curve #	Length	Radius	Delta	Chord Direction	Chord Length
C1	122.72	792.00	8°52'41"	S47°48'25"W	122.60
C2	174.07	792.00	12°35'35"	S45°56'58"W	173.72
C3	40.24	792.00	2°54'40"	S41°06'31"W	40.24
C4	11.07	765.49	0°49'43"	S41°21'54"W	11.07
C5	350.30	765.49	26°13'10"	S27°50'27"W	347.25
C6	496.27	765.49	37°08'43"	S23°12'24"W	487.63
C7	134.90	765.49	10°05'49"	S09°40'57"W	134.72
C8	23.35	15.00	89°11'33"	S43°38'35"E	21.06
C9	40.47	26.00	89°11'33"	S43°38'35"E	36.51
C10	41.21	26.00	90°48'27"	N46°21'25"E	37.03
C11	23.77	15.00	90°48'27"	N46°21'25"E	21.36
C12	23.35	15.00	89°11'33"	S43°38'35"E	21.06
C13	40.47	26.00	89°11'33"	N43°38'35"W	36.51

Curve Table					
Curve #	Length	Radius	Delta	Chord Direction	Chord Length
C14	41.21	26.00	90°48'27"	N46°21'25"E	37.03
C15	23.77	15.00	90°48'27"	N46°21'25"E	21.36
C16	23.81	15.00	90°57'11"	N44°31'24"W	21.39
C17	41.27	26.00	90°57'11"	N44°31'24"W	37.07
C18	40.41	26.00	89°02'49"	N45°28'36"E	36.46
C19	23.31	15.00	89°02'49"	S45°28'36"W	21.04
C20	110.21	181.00	34°53'11"	N72°33'24"W	108.51
C21	103.51	170.00	34°53'11"	S72°33'24"E	101.92
C22	91.33	150.00	34°53'11"	N72°33'24"W	89.93
C23	79.16	130.00	34°53'11"	S72°33'24"E	77.94
C24	72.46	119.00	34°53'11"	N72°33'24"W	71.34
C25	11.11	792.00	0°48'14"	S42°57'58"W	11.11

Parcel Line Table		
Line #	Length	Direction
L1	10.15	N55°06'49"W
L2	20.00	S02°41'40"W
L3	20.00	S02°41'40"W
L4	20.24	S80°17'18"E
L5	20.24	S80°17'18"E
L6	20.02	S00°30'52"E
L7	20.02	S00°30'52"E
L8	20.00	S00°30'52"E
L9	20.00	S00°30'52"E
L10	8.23	N55°06'49"W

LEGEND

- SECTION CORNER (FOUND)
- SECTION LINE
- BOUNDARY LINE
- PARCEL LINE
- SET MONUMENT (RIMROCK E&D)
- CENTERLINE MONUMENT

SANTAQUIN PEAKS INDUSTRIAL PARK - AMENDED

**RIMROCK
ENGINEERING &
DEVELOPMENT**

5513 W. 11000 N. #435
HIGHLAND, UT 84003
tgower@re-n-d.com
801-837-0633

PROJECT NAME	
SANTAQUIN PEAKS INDUSTRIAL PARK-AMENDED	
1" = 100'	PROJECT # 5QC2207-01-01
DRAWN: AP	DATE: 04/30/2024
CHECKED: TG	SHEET NO: 2 OF 2