

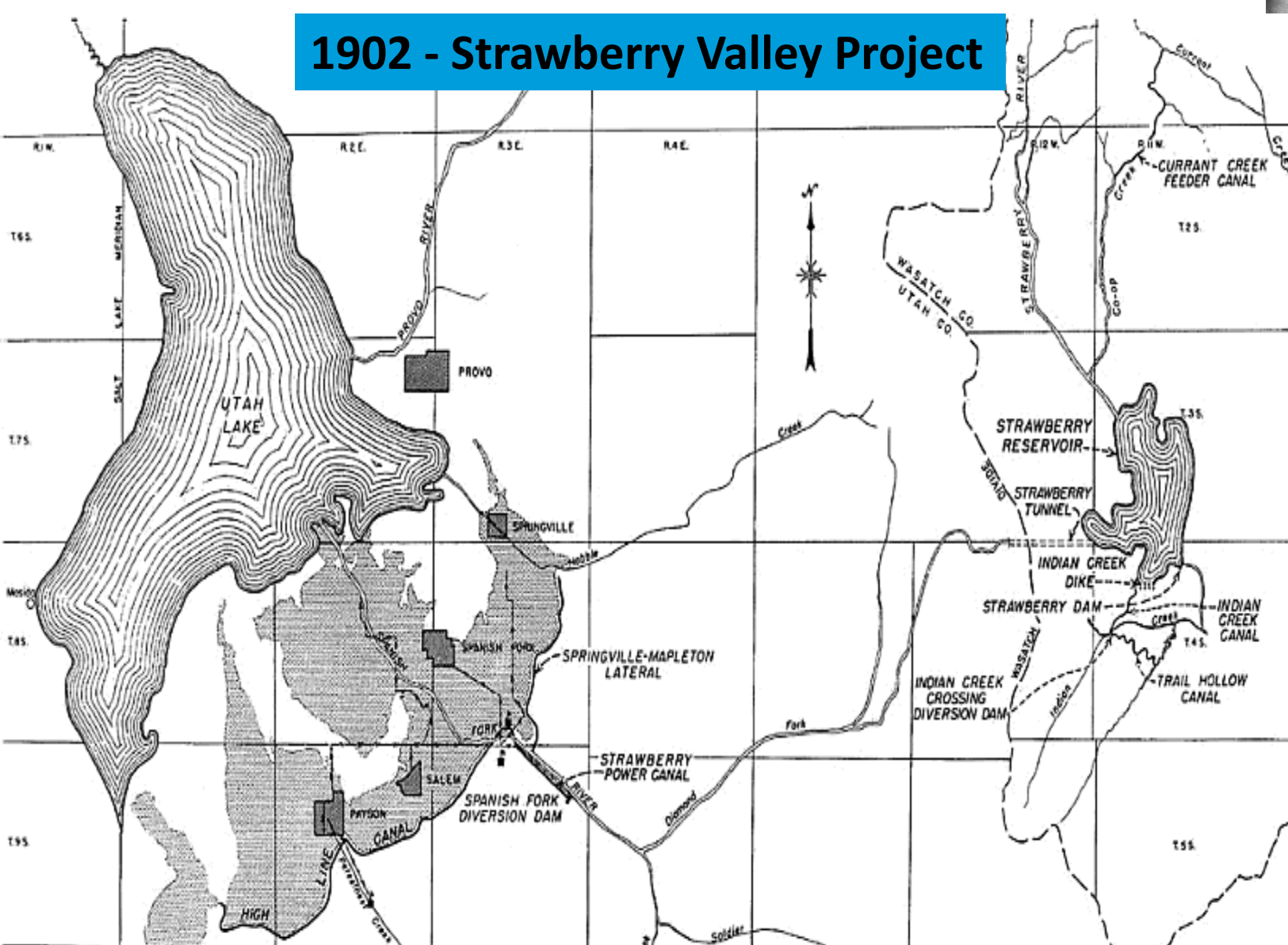
Santaquin NWP Update

February 4, 2025



**CENTRAL UTAH WATER
CONSERVANCY DISTRICT**

1902 - Strawberry Valley Project



In 1889 the people of Springville and Mapleton had formed a committee and petitioned the governor to "ascertain if the waters of Strawberry Creek , in Strawberry Valley, could be brought into Springville through Spanish Fork Canyon for Irrigation Purposes."

In 1902 with the passing of the Reclamation Act the Strawberry Valley Project was authorized to construct the Strawberry Reservoir and a tunnel to divert water to Spanish Fork Canyon. The reservoir and tunnel were completed in 1912.





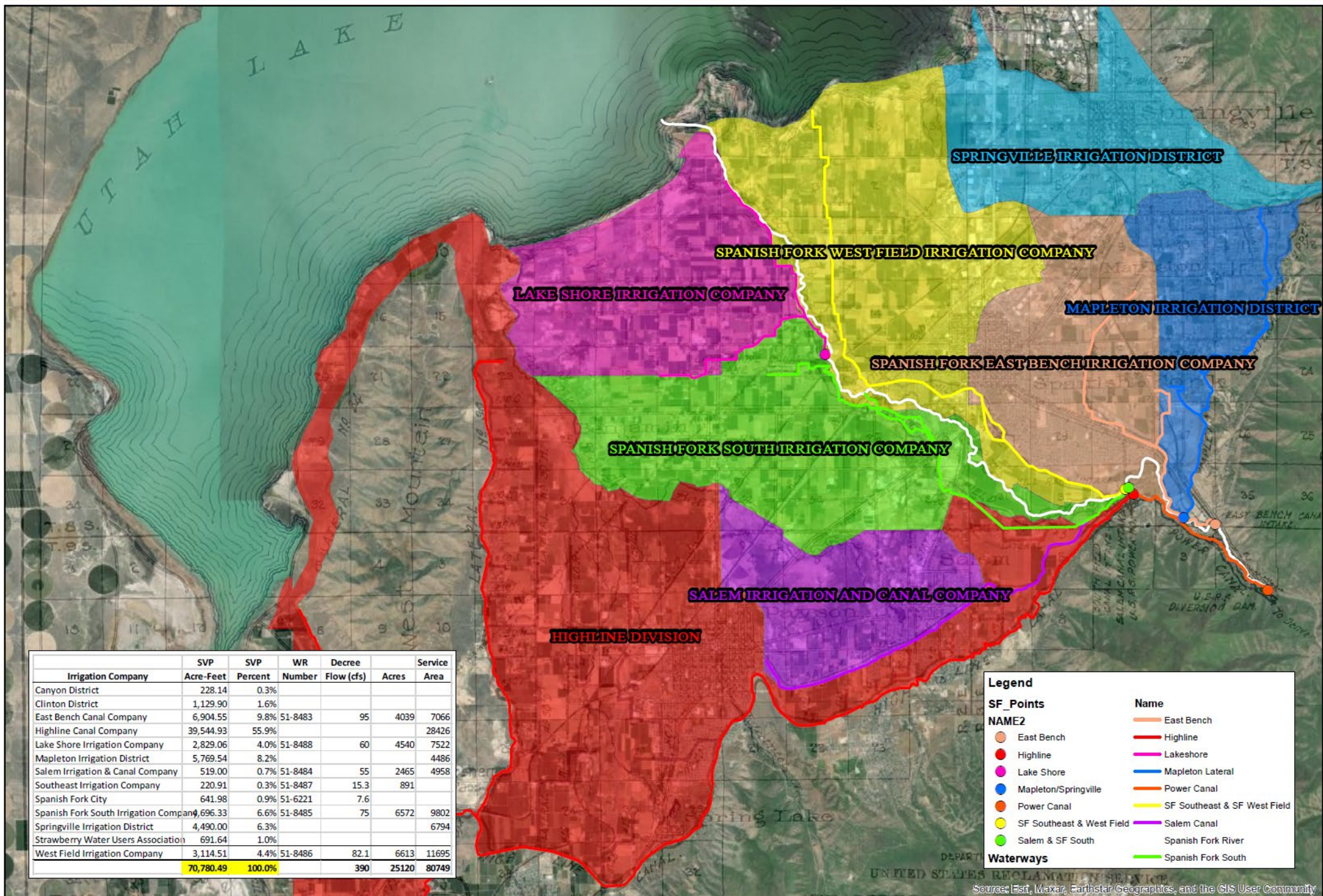
Strawberry Dam

Height: 72 feet

Length: 490 feet

Completed: September 20, 1913





Irrigation Company	SVP Acre-Feet	SVP Percent	WR Number	Decree Flow (cfs)	Acres	Service Area
Canyon District	228.14	0.3%				
Clinton District	1,129.90	1.6%				
East Bench Canal Company	6,904.55	9.8%	51-8483	95	4039	7066
Highline Canal Company	39,544.93	55.9%				28426
Lake Shore Irrigation Company	2,829.06	4.0%	51-8488	60	4540	7522
Mapleton Irrigation District	5,769.54	8.2%				4486
Salem Irrigation & Canal Company	519.00	0.7%	51-8484	55	2465	4958
Southeast Irrigation Company	220.91	0.3%	51-8487	15.3	891	
Spanish Fork City	641.98	0.9%	51-6221	7.6		
Spanish Fork South Irrigation Company	4,696.33	6.6%	51-8485	75	6572	9802
Springville Irrigation District	4,490.00	6.3%				6794
Strawberry Water Users Association	691.64	1.0%				
West Field Irrigation Company	3,114.51	4.4%	51-8486	82.1	6613	11695
	70,780.49	100.0%		390	25120	80749

Legend

SF_Points

NAME2

- East Bench
- Highline
- Lake Shore
- Mapleton/Springville
- Power Canal
- SF Southeast & West Field
- Salem Canal
- Salem & SF South




Name

- East Bench
- Highline
- Lakeshore
- Mapleton Lateral
- Power Canal
- SF Southeast & SF West Field
- Salem Canal
- Spanish Fork River
- Spanish Fork South

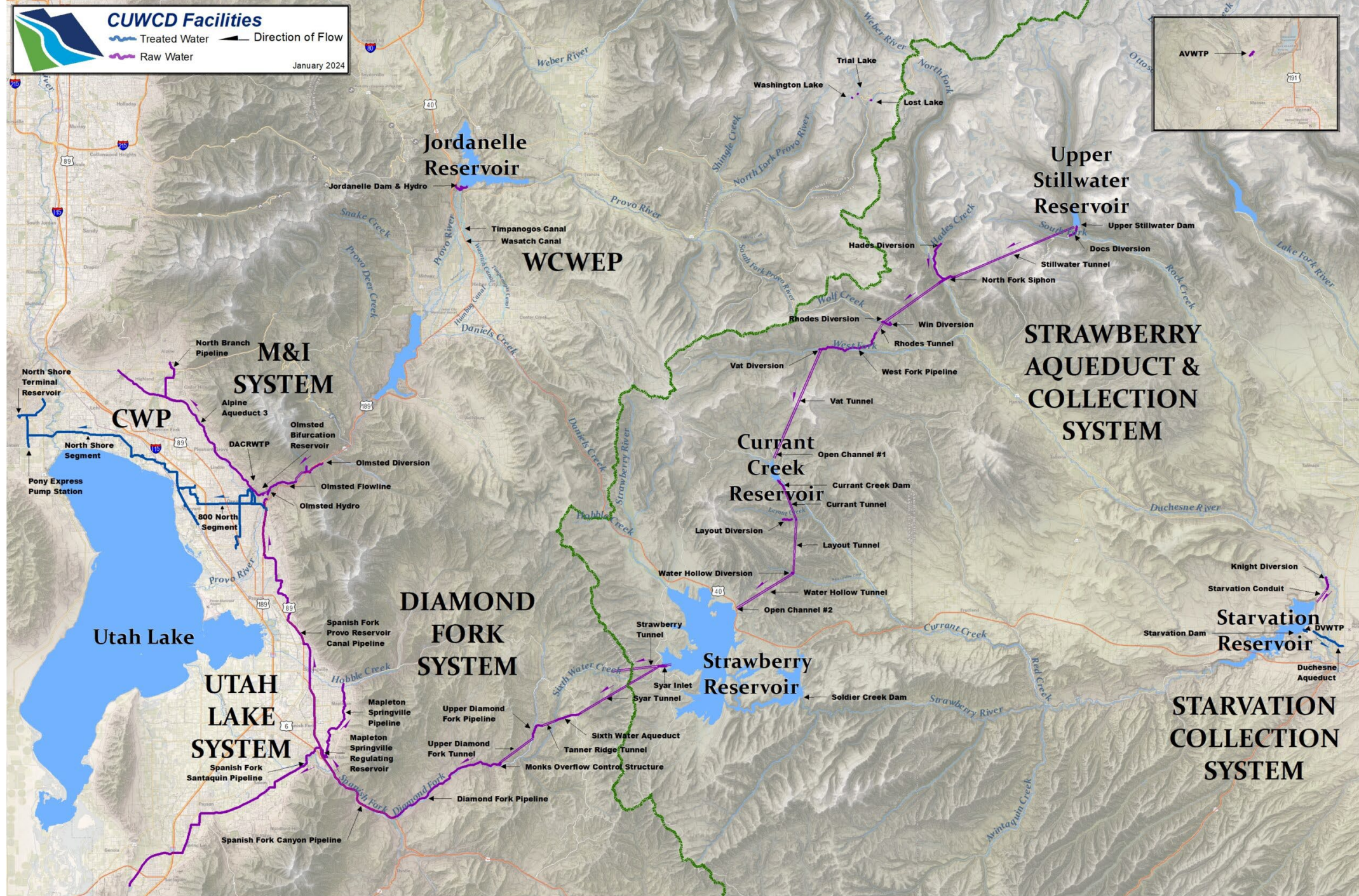
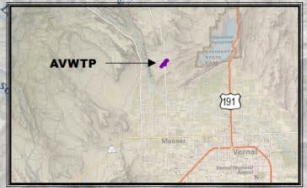
Waterways



CUWCD Facilities

Treated Water  Direction of Flow 
 Raw Water 

January 2024



Jordanelle Reservoir

Upper Stillwater Reservoir

STRAWBERRY AQUEDUCT & COLLECTION SYSTEM

Currant Creek Reservoir

DIAMOND FORK SYSTEM

Strawberry Reservoir

Starvation Reservoir

UTAH LAKE SYSTEM

STARVATION COLLECTION SYSTEM

WCWEP

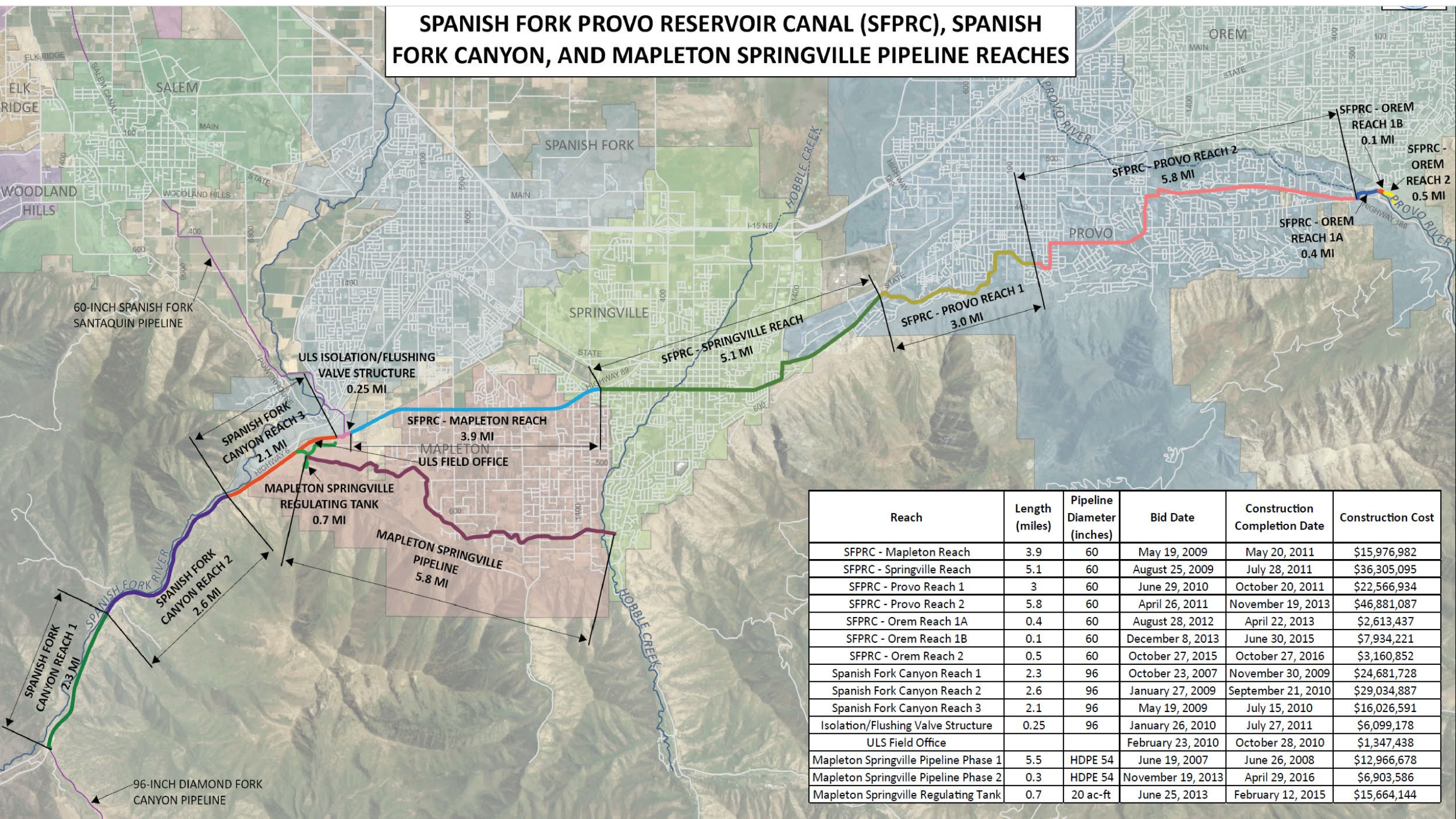
M&I SYSTEM

CWP

Utah Lake



SPANISH FORK PROVO RESERVOIR CANAL (SFPRC), SPANISH FORK CANYON, AND MAPLETON SPRINGVILLE PIPELINE REACHS

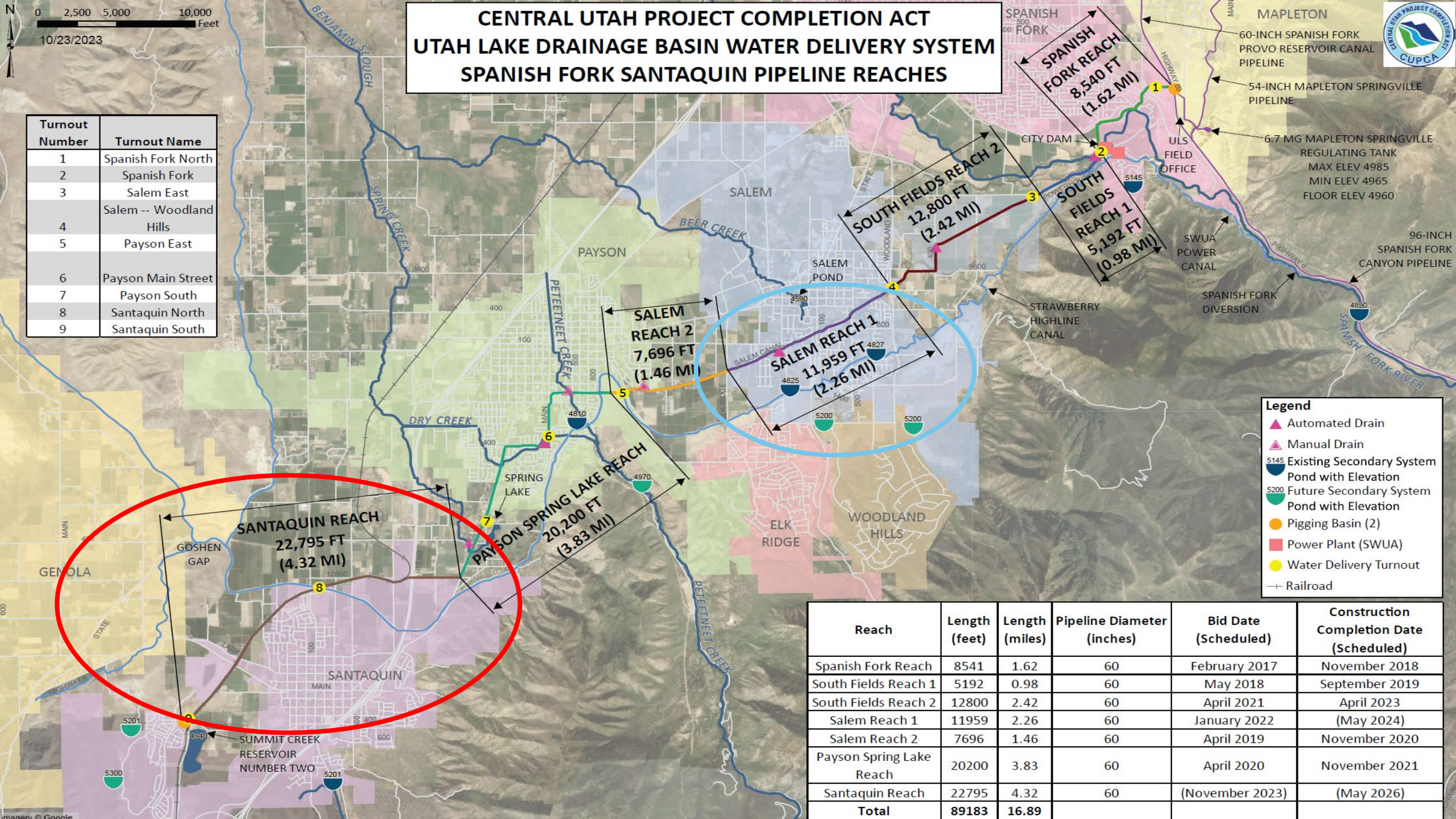


Reach	Length (miles)	Pipeline Diameter (inches)	Bid Date	Construction Completion Date	Construction Cost
SFPRC - Mapleton Reach	3.9	60	May 19, 2009	May 20, 2011	\$15,976,982
SFPRC - Springville Reach	5.1	60	August 25, 2009	July 28, 2011	\$36,305,095
SFPRC - Provo Reach 1	3	60	June 29, 2010	October 20, 2011	\$22,566,934
SFPRC - Provo Reach 2	5.8	60	April 26, 2011	November 19, 2013	\$46,881,087
SFPRC - Orem Reach 1A	0.4	60	August 28, 2012	April 22, 2013	\$2,613,437
SFPRC - Orem Reach 1B	0.1	60	December 8, 2013	June 30, 2015	\$7,934,221
SFPRC - Orem Reach 2	0.5	60	October 27, 2015	October 27, 2016	\$3,160,852
Spanish Fork Canyon Reach 1	2.3	96	October 23, 2007	November 30, 2009	\$24,681,728
Spanish Fork Canyon Reach 2	2.6	96	January 27, 2009	September 21, 2010	\$29,034,887
Spanish Fork Canyon Reach 3	2.1	96	May 19, 2009	July 15, 2010	\$16,026,591
Isolation/Flushing Valve Structure	0.25	96	January 26, 2010	July 27, 2011	\$6,099,178
ULS Field Office			February 23, 2010	October 28, 2010	\$1,347,438
Mapleton Springville Pipeline Phase 1	5.5	HDPE 54	June 19, 2007	June 26, 2008	\$12,966,678
Mapleton Springville Pipeline Phase 2	0.3	HDPE 54	November 19, 2013	April 29, 2016	\$6,903,586
Mapleton Springville Regulating Tank	0.7	20 ac-ft	June 25, 2013	February 12, 2015	\$15,664,144

CENTRAL UTAH PROJECT COMPLETION ACT UTAH LAKE DRAINAGE BASIN WATER DELIVERY SYSTEM SPANISH FORK SANTAQUIN PIPELINE REACHES



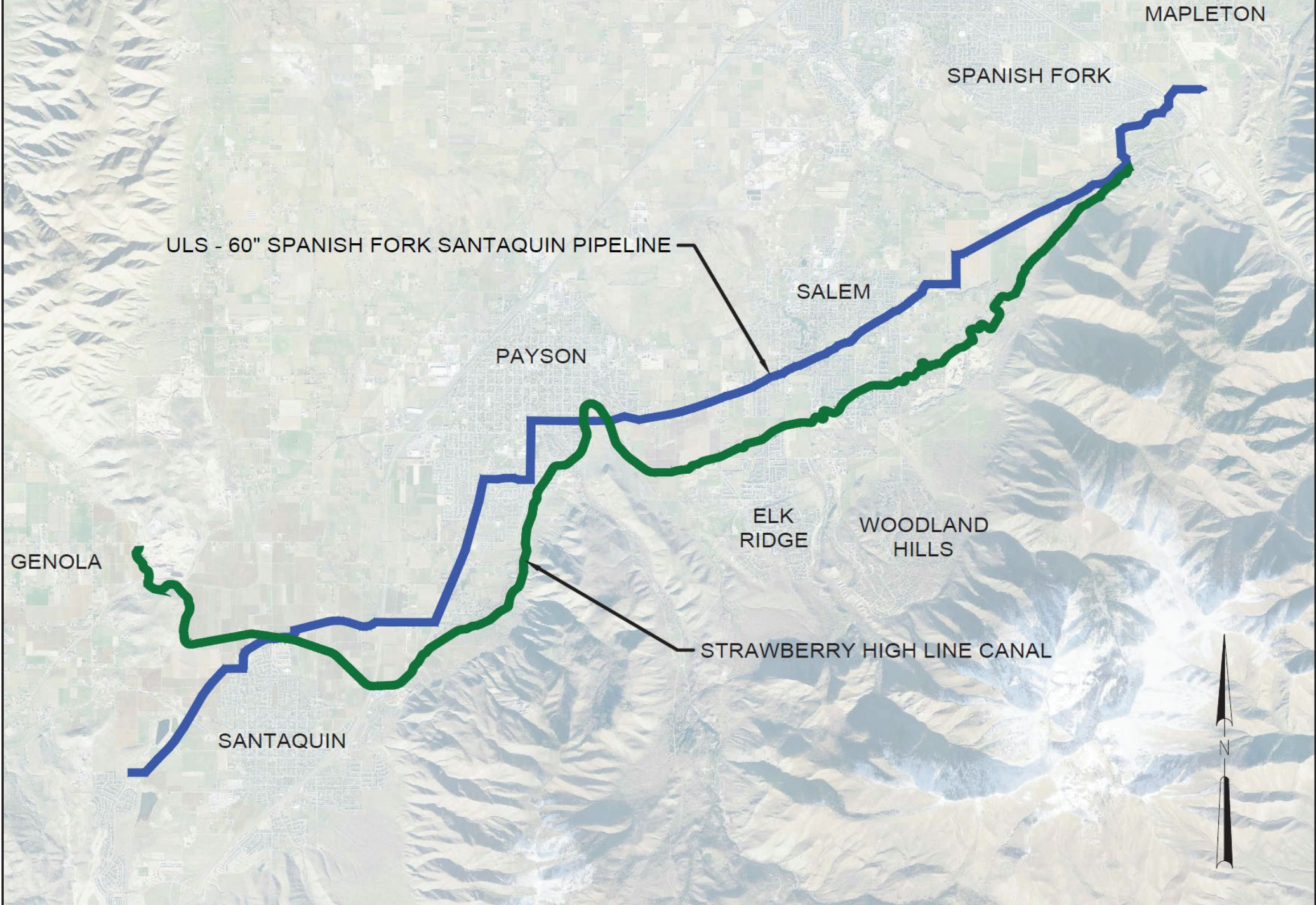
Turnout Number	Turnout Name
1	Spanish Fork North
2	Spanish Fork
3	Salem East
4	Salem -- Woodland Hills
5	Payson East
6	Payson Main Street
7	Payson South
8	Santaquin North
9	Santaquin South



Legend

- ▲ Automated Drain
- ▲ Manual Drain
- Existing Secondary System
- Pond with Elevation
- Future Secondary System
- Pond with Elevation
- Piggling Basin (2)
- Power Plant (SWUA)
- Water Delivery Turnout
- Railroad

Reach	Length (feet)	Length (miles)	Pipeline Diameter (inches)	Bid Date (Scheduled)	Construction Completion Date (Scheduled)
Spanish Fork Reach	8541	1.62	60	February 2017	November 2018
South Fields Reach 1	5192	0.98	60	May 2018	September 2019
South Fields Reach 2	12800	2.42	60	April 2021	April 2023
Salem Reach 1	11959	2.26	60	January 2022	(May 2024)
Salem Reach 2	7696	1.46	60	April 2019	November 2020
Payson Spring Lake Reach	20200	3.83	60	April 2020	November 2021
Santaquin Reach	22795	4.32	60	(November 2023)	(May 2026)
Total	89183	16.89			



MAPLETON

SPANISH FORK

ULS - 60" SPANISH FORK SANTAQUIN PIPELINE

SALEM

PAYSON

ELK RIDGE

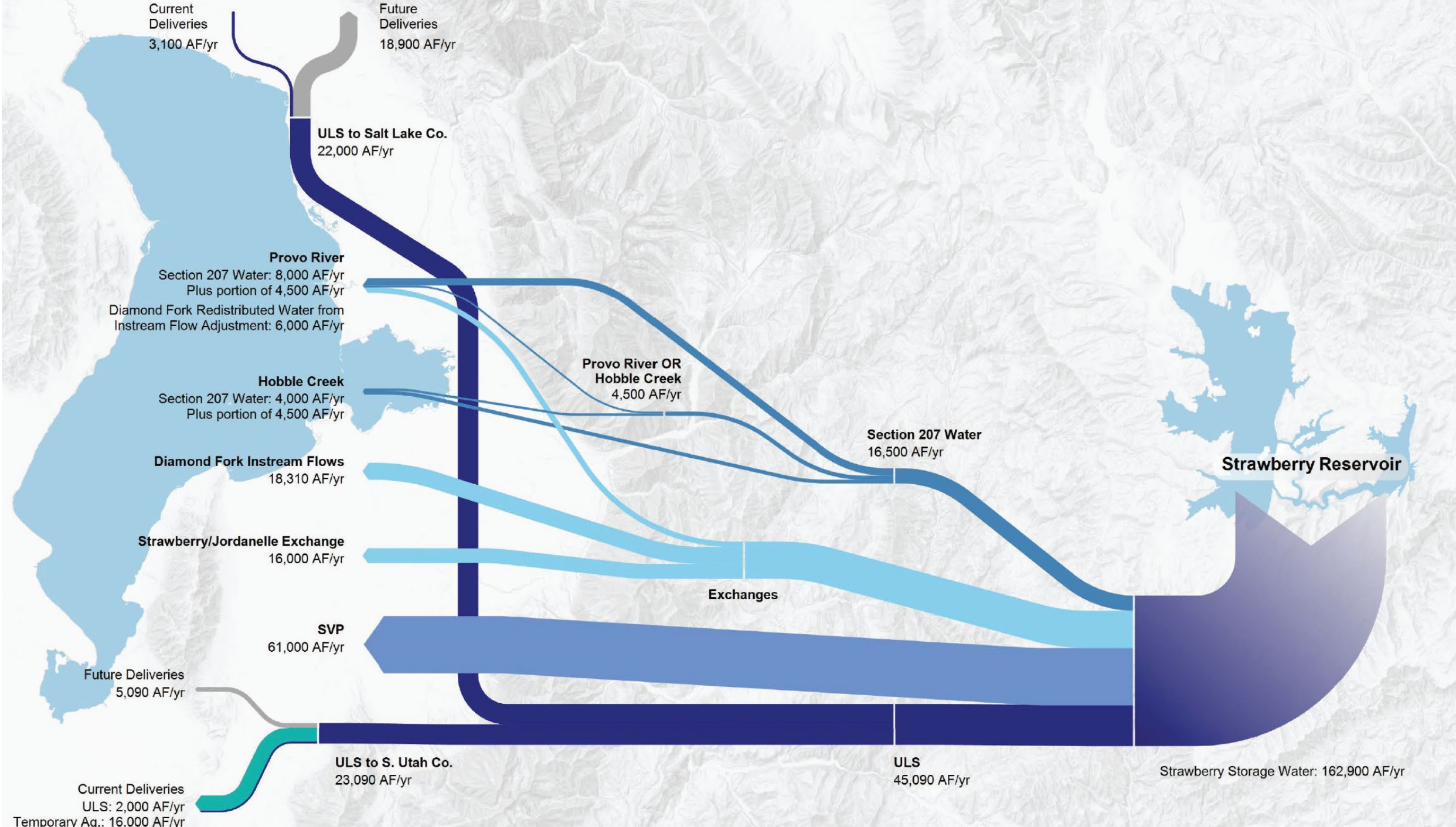
WOODLAND HILLS

GENOLA

SANTAQUIN

STRAWBERRY HIGH LINE CANAL





Current Deliveries
3,100 AF/yr

Future Deliveries
18,900 AF/yr

ULS to Salt Lake Co.
22,000 AF/yr

Provo River
Section 207 Water: 8,000 AF/yr
Plus portion of 4,500 AF/yr
Diamond Fork Redistributed Water from
Instream Flow Adjustment: 6,000 AF/yr

Hubble Creek
Section 207 Water: 4,000 AF/yr
Plus portion of 4,500 AF/yr

**Provo River OR
Hubble Creek**
4,500 AF/yr

Section 207 Water
16,500 AF/yr

Diamond Fork Instream Flows
18,310 AF/yr

Strawberry Reservoir

Strawberry/Jordanelle Exchange
16,000 AF/yr

Exchanges

SVP
61,000 AF/yr

Future Deliveries
5,090 AF/yr

ULS to S. Utah Co.
23,090 AF/yr

ULS
45,090 AF/yr

Strawberry Storage Water: 162,900 AF/yr

Current Deliveries
ULS: 2,000 AF/yr
Temporary Ag.: 16,000 AF/yr

Changes to the Strawberry High Line Canal



- Enclose High Line Canal in a pipe to provide public safety, improved water conservation, and efficient water management
- Capture saved water under CUPCA Section 207 authority for use by the Secretary and District
- Incorporate Return Flows to Utah Lake into Bonneville Unit water supply



Population Projections – South Utah County

TABLE 1	POPULATION				
	2030	2040	2050	2060	2065
Benjamin/Lake Shore	8,576	8,576	45,000	58,196	74,925
Elk Ridge	4,314	5,167	5,780	6,505	6,804
Genola	1,486	1,578	2,696	3,107	3,598
Goshen	1,185	1,671	2,095	2,542	2,749
Mapleton	16,480	19,726	21,724	24,375	25,366
Payson	30,341	42,728	64,887	79,944	90,210
Salem	21,426	36,057	48,708	62,222	68,451
Santaquin	19,162	29,982	41,507	52,179	57,728
Spanish Fork	58,643	79,575	93,509	111,291	118,288
Springville	48,562	58,174	61,969	69,134	71,138
Woodland Hills	1,824	2,018	2,200	2,373	2,457
Total	211,999	285,252	390,075	471,868	521,714

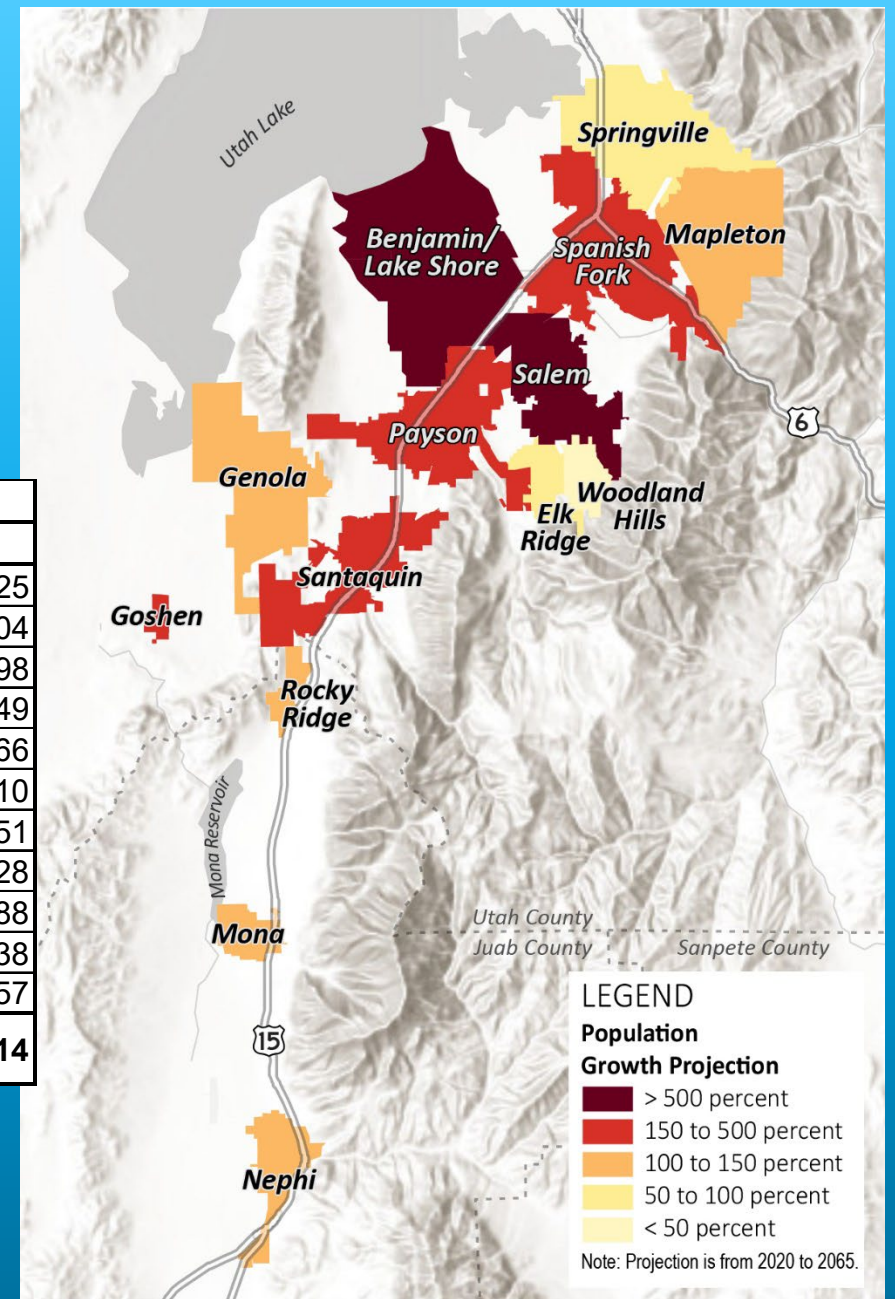
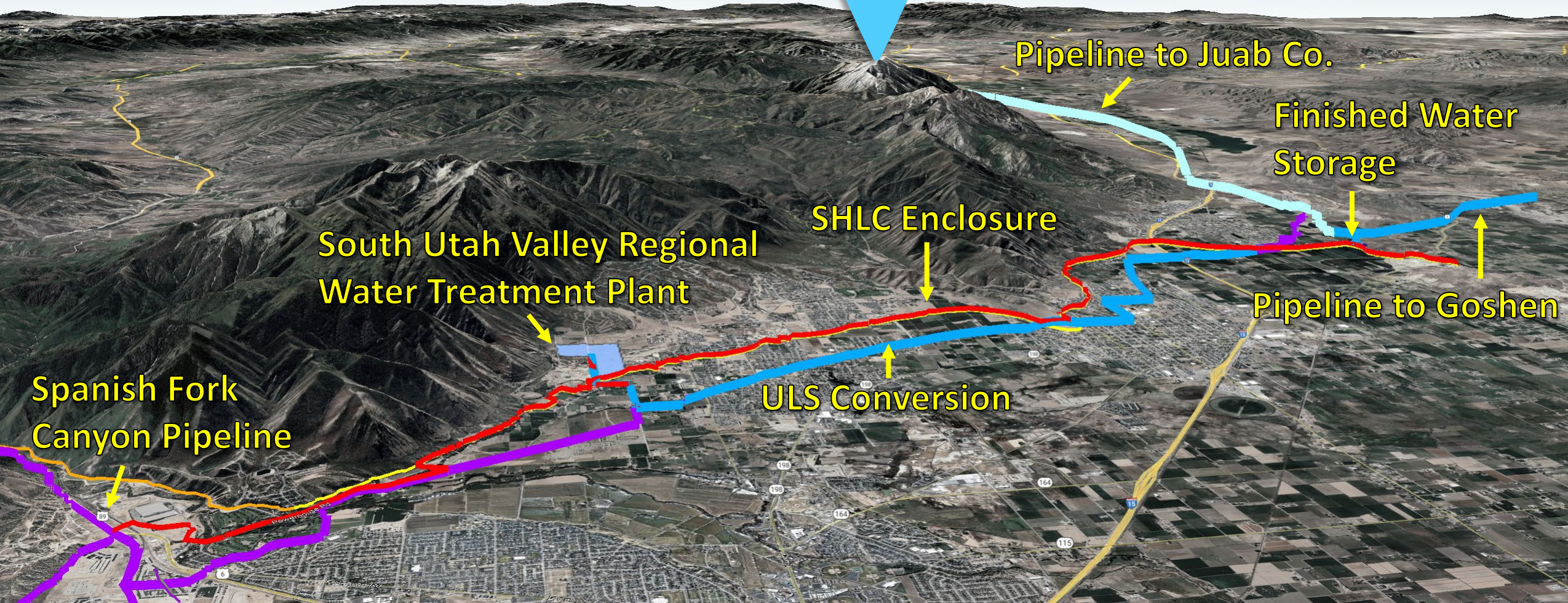


Image Source: ESRI, USGS, Garmin, NASA, HERE, NOAA, CGIAR, NCEAS, NLS, OS, NMA, GSA, Geoland.
 Data Source: Population projections in Utah County are from Mountainland Association of Governments (<https://mountainland.org/population-projections>); population projections in Juab County are from Wasatch Front Regional Council (<https://data.wfrc.org/datasets/population-projections-taz>). Data is through 2050; extrapolated for 2065.

Nebo Regional Water Project (NWP)





Existing

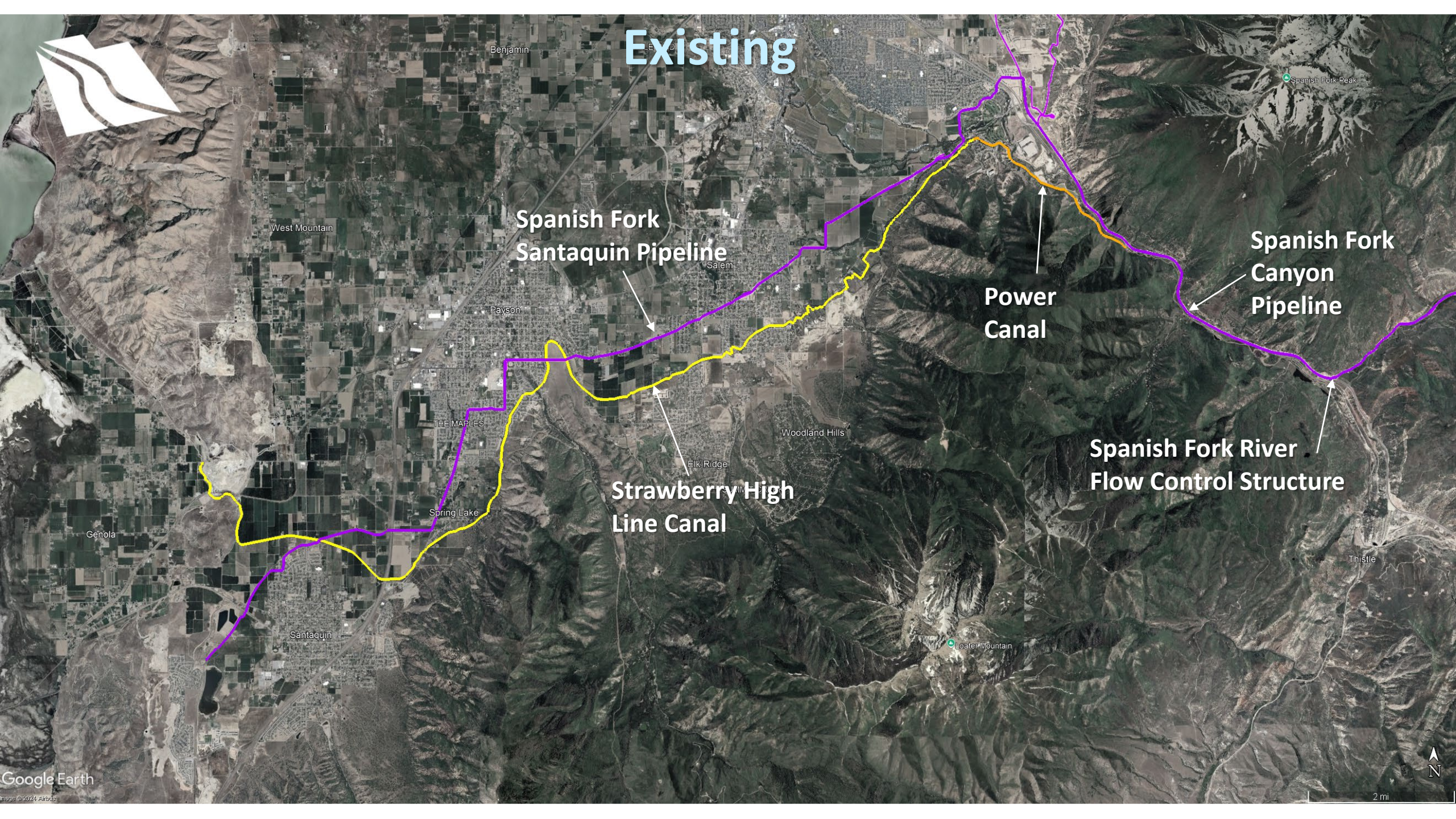
**Spanish Fork
Santaquin Pipeline**

**Power
Canal**

**Spanish Fork
Canyon
Pipeline**

**Strawberry High
Line Canal**

**Spanish Fork River
Flow Control Structure**



Proposed



Finished Water in ULS Spanish Fork Santaquin Pipeline

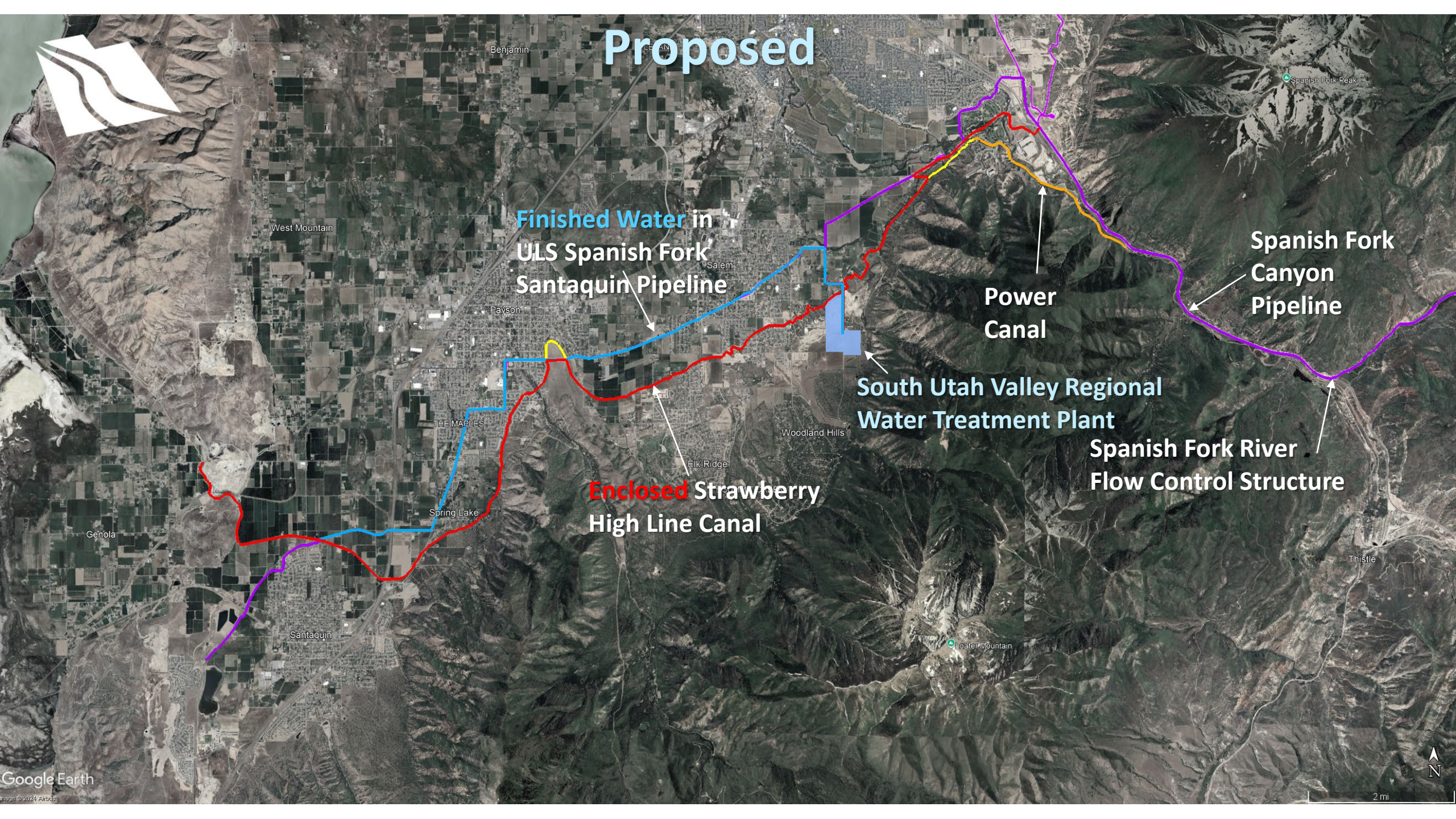
Power Canal

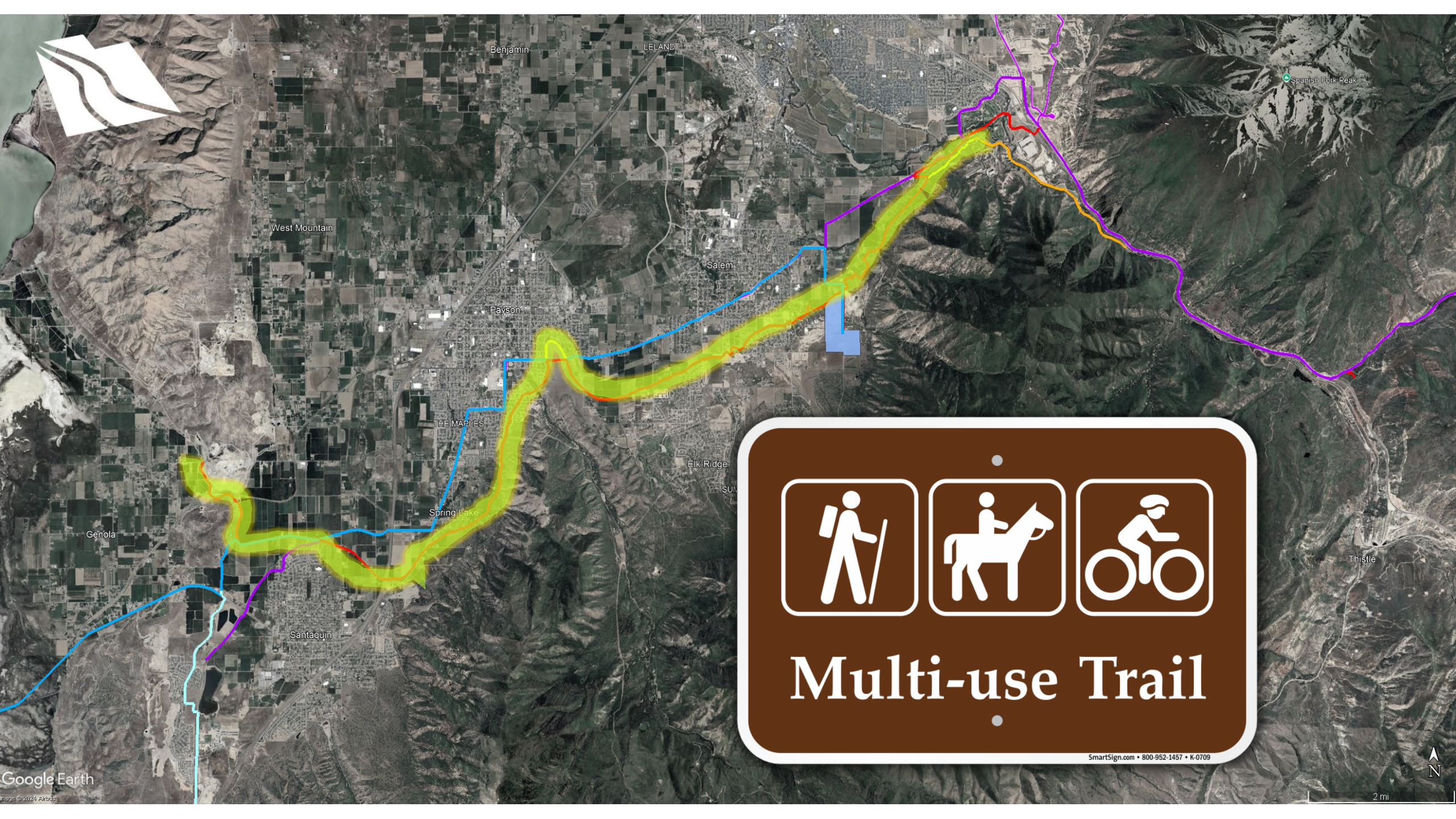
Spanish Fork Canyon Pipeline

South Utah Valley Regional Water Treatment Plant

Spanish Fork River Flow Control Structure

Enclosed Strawberry High Line Canal





West Mountain

Benjamin LELAND

Spanish Fork Peak

Salem

Payson

THE MAPLES

Elk Ridge

Spring Lake

Genola

Santaquin

Thistle



Multi-use Trail

Smartsign.com • 800-952-1457 • K-0709

NWP Timeline

