

1. SEE SHEET C.103 FOR POINT TABLES.
CONSTRUCTION KEY NOTES
 (NOT ALL KEY NOTES MAY BE USED ON THIS SHEET)

- ① INSTALL TYPE "E" CURB AND GUTTER PER CURRENT APWA STANDARD DRAWING NO. 205.2 SHEET C.506
- ② INSTALL TYPE "P" CURB AND GUTTER PER CURRENT APWA STANDARD DRAWING NO. 209 SHEET C.506
- ③ REFER TO ARCHITECTURAL PLANS FOR BUILDING INFORMATION
- ④ INSTALL 4" WIDE PAINTED WHITE PARKING LINES
- ⑤ INSTALL 3' WIDE CONCRETE WATERWAY SEE DETAIL G SHEET 501
- ⑥ INSTALL CONCRETE SIDEWALK PER SANTAQUIN CITY STANDARD DRAWING CG5, SHEET C.503
- ⑦ INSTALL DRIVE APPROACH PER SANTAQUIN CITY STANDARD DRAWING CG3, SHEET C.503
- ⑧ INSTALL CURB RAMP PER SANTAQUIN CITY STANDARD DRAWING CG2A, SHEET C.504
- ⑨ INSTALL 3" AC OVER 6" BASE. SEE DETAIL A SHEET C.501
- ⑩ INSTALL PAVEMENT MARKING PER LATEST VERSION OF THE M.U.T.C.D
- ⑪ SEE LANDSCAPE PLANS BY OTHERS
- ⑫ CONSTRUCT ROCKERY LANDSCAPE WALL SEE DETAIL C.501
- ⑬ INSTALL MODIFIED P CURB WALL PER DETAIL C ON SHEET C.501
- ⑭ FLAG POLE BY OTHERS
- ⑮ EXISTING FLAG POLE PROTECT IN PLACE
- ⑯ EXISTING MONUMENT SIGN PROTECT IN PLACE
- ⑰ INSTALL HANDICAP ACCESS RAMP PER DETAIL B SHEET C.501
- ⑱ INSTALL DUMPSTER PAD PER DETAIL F, SEE ARCHITECTURAL PLANS FOR ENCLOSURE DETAILS
- ⑲ INSTALL MODIFIED CURB PER SANTAQUIN CITY STANDARD DRAWING T1 ON SHEET C.507
- ⑳ INSTALL SINGLE PATH TRAIL PER SANTAQUIN CITY STANDARD DRAWING T1 ON SHEET C.507
- ㉑ PROVIDE 6" BERM ALONG UNDEVELOPED SURFACE TO MINIMIZE POTENTIAL STORM WATER RUN OFF FROM RECYCLED ASPHALT. BERM PER DETAIL SHEETS C.105 AND C.107.
- ㉒ INSTALL 6'-0" TO 7'-0" CONCRETE RETAINING WALL WITH 42" 2 Rail FENCE FOR FALL PROTECTION PER DETAIL ON SHEET C.501
- ㉓ INSTALL SIMTEK FENCE
- ㉔ END ASPHALT W/ WEDGE, INSTALL 3" D50 RIP RAP W/ MIRFI FILTER MEDIUM

GENERAL NOTES

1. THE DEVELOPER AND THE GENERAL CONTRACTOR UNDERSTAND THAT IT IS HIS/HER RESPONSIBILITY TO ENSURE THAT ALL IMPROVEMENTS INSTALLED WITHIN THIS DEVELOPMENT ARE CONSTRUCTED IN FULL COMPLIANCE WITH ALL STATE AND SANTAQUIN CITY CODES, ORDINANCES AND STANDARDS. THESE PLANS ARE NOT ALL INCLUSIVE OF ALL MINIMUM CODES, ORDINANCES, AND STANDARDS. THIS FACT DOES NOT RELIEVE THE DEVELOPER OR GENERAL CONTRACTOR FROM FULL COMPLIANCE WITH ALL MINIMUM STATE AND SANTAQUIN CITY CODES, ORDINANCES AND STANDARDS.
2. ALL RECOMMENDATIONS MADE IN A PERTINENT GEOTECHNICAL REPORT/STUDY SHALL BE FOLLOWED EXPLICITLY DURING CONSTRUCTION OF BUILDINGS AND SITE IMPROVEMENTS.

DISCLAIMER NOTE

UTILITY LOCATIONS SHOWN HEREON ARE APPROXIMATE ONLY. IT SHALL BE THE CONTRACTOR'S RESPONSIBILITY TO DETERMINE THE EXACT HORIZONTAL AND VERTICAL LOCATION OF ALL EXISTING UNDERGROUND AND OVERHEAD UTILITIES PRIOR TO COMMENCING CONSTRUCTION. NO REPRESENTATION IS MADE THAT ALL EXISTING UTILITIES ARE SHOWN HEREON. THE ENGINEER ASSUMES NO RESPONSIBILITY FOR UTILITIES NOT SHOWN OR UTILITIES NOT SHOWN IN THEIR PROPER LOCATION.

CALL BEFORE YOU DIG.
 IT'S FREE & IT'S THE LAW.
 1-800-662-4111
 208-2100
 200 WEST 700 SOUTH, SUITE 101
 SALT LAKE CITY, UTAH 84101

GILSON ENGINEERING
 Consulting Engineers & Surveyors
 12401 SOUTH 480 EAST BUILDING C UNIT 2, DRAAPER, UT 84020
 PHONE: (801) 971-9414 FAX: (801) 971-9449

PROFESSIONAL ENGINEER
 LICENSE NO. 362118
 Bradley S. Gilson
 STATE OF UTAH

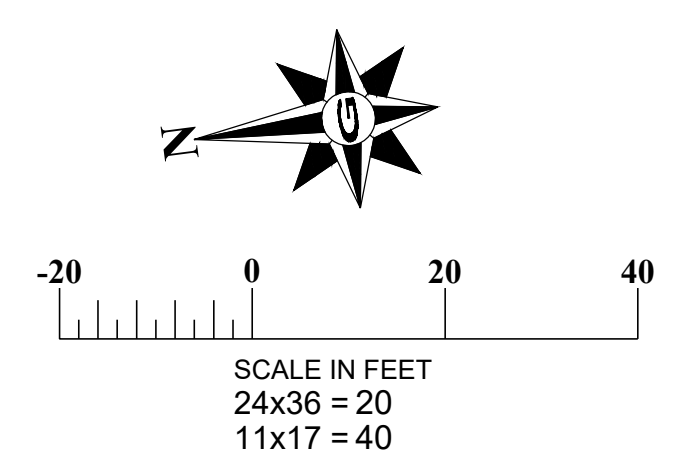
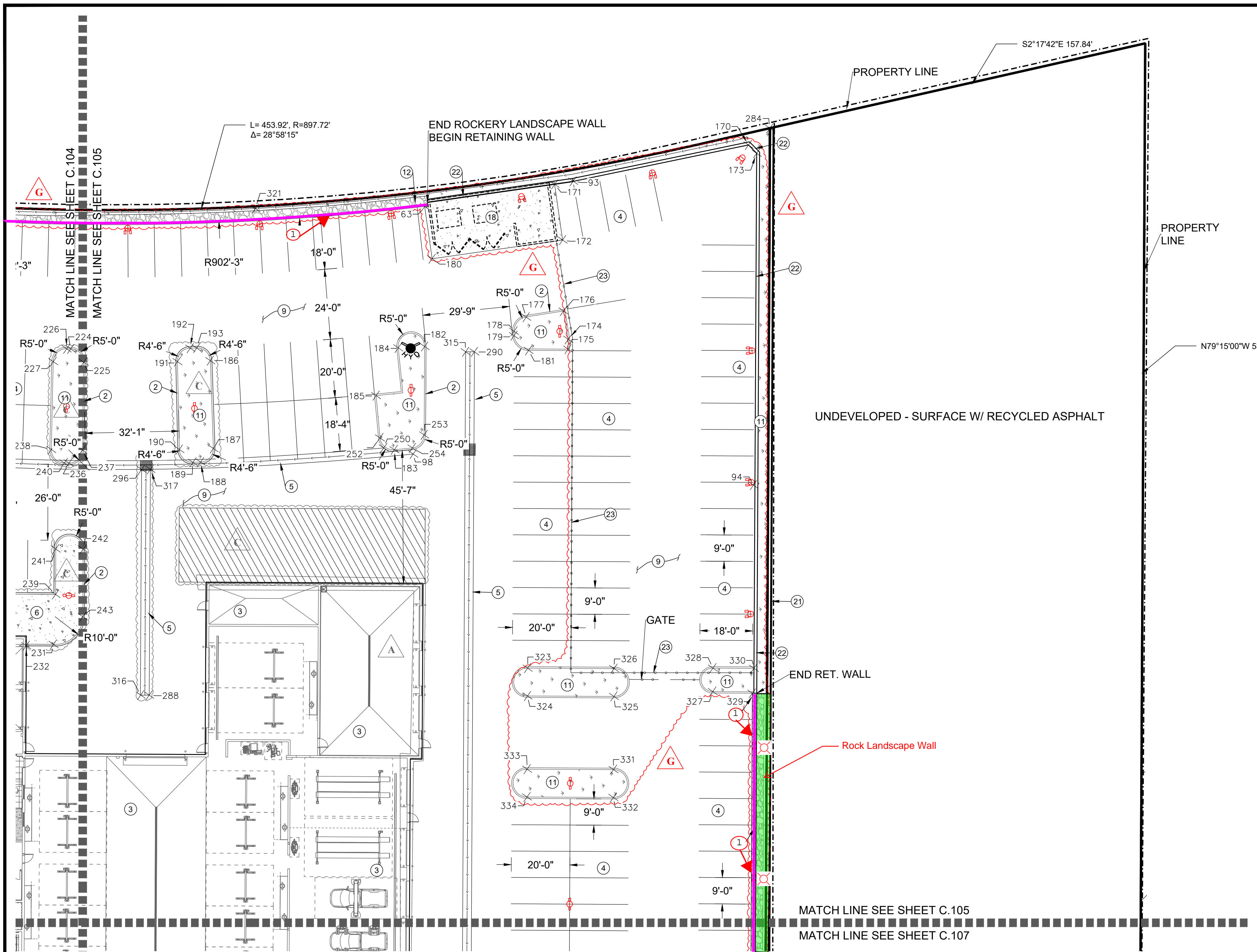
REVISIONS

REV	DATE	BY	DESCRIPTION
C	03/02/23	JAG	ISSUE REVISIONS & ADD STRIPING
D	10/26/23	TS	7" TO 4" WATER LINE
E	11/28/23	TS	LATERAL LOCATIONS
F	07/24/24	JAG	ROOF DRAINS
G	10/29/24	TS	SOUTH EAST WALL

MARCH 2023
 PROJECT NAME: HORIZONTAL CONTROL PLAN
 DESIGNED/DRAWN BY: JAG
 CHECKED: APPROVED:

HORIZONTAL CONTROL PLAN
 MURDOCK FORD SANTAQUIN
 985 WEST SUMMIT RIDGE PKWY
 SANTAQUIN, UTAH

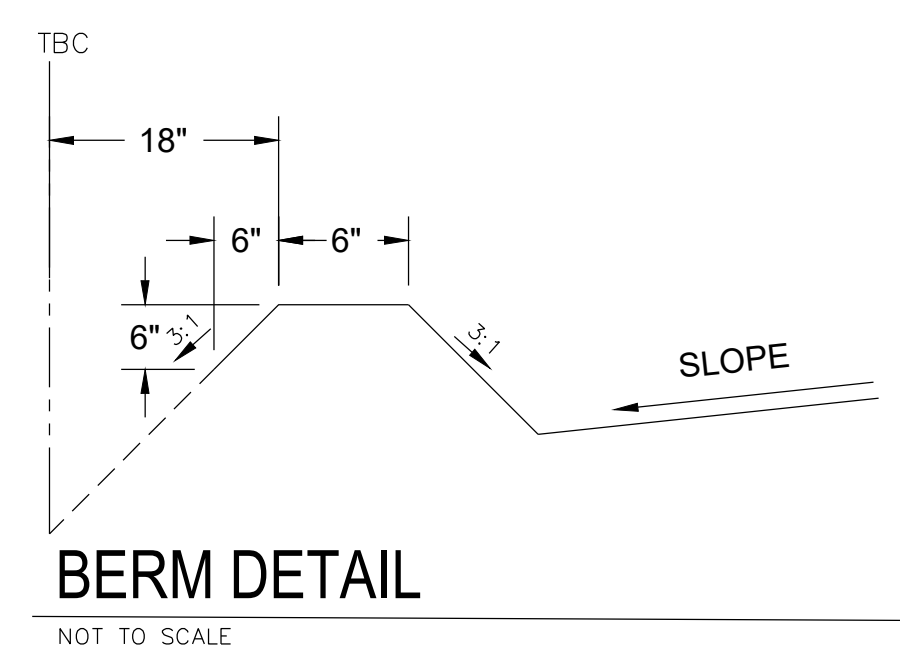
REVISION: **F**
 PROJ.: **NCC.010**
C.104



1. SEE SHEET C.104 FOR POINT TABLES.

CONSTRUCTION KEY NOTES
(NOT ALL KEY NOTES MAY BE USED ON THIS SHEET)

- ① INSTALL TYPE "E" CURB AND GUTTER PER CURRENT APWA STANDARD DRAWING NO. 205.2 SHEET C.506
- ② INSTALL TYPE "P" CURB AND GUTTER PER CURRENT APWA STANDARD DRAWING NO. 209 SHEET C.506
- ③ REFER TO ARCHITECTURAL PLANS FOR BUILDING INFORMATION
- ④ INSTALL 4" WIDE PAINTED WHITE PARKING LINES
- ⑤ INSTALL 3" WIDE CONCRETE WATERWAY SEE DETAIL G SHEET 501
- ⑥ INSTALL CONCRETE SIDEWALK PER SANTAQUIN CITY STANDARD DRAWING CG5, SHEET C.503
- ⑦ INSTALL DRIVE APPROACH PER SANTAQUIN CITY STANDARD DRAWING CG3, SHEET C.503
- ⑧ INSTALL CURB RAMP PER SANTAQUIN CITY STANDARD DRAWING CG2A, SHEET C.504
- ⑨ INSTALL 3" AC OVER 6" BASE. SEE DETAIL A SHEET C.501
- ⑩ INSTALL PAVEMENT MARKING PER LATEST VERSION OF THE M.U.T.C.D
- ⑪ SEE LANDSCAPE PLANS BY OTHERS
- ⑫ CONSTRUCT ROCKERY LANDSCAPE WALL SEE DETAIL C.501
- ⑬ INSTALL MODIFIED P CURB WALL PER DETAIL C ON SHEET C.501
- ⑭ FLAG POLE BY OTHERS
- ⑮ EXISTING FLAG POLE PROTECT IN PLACE
- ⑯ EXISTING MONUMENT SIGN PROTECT IN PLACE
- ⑰ INSTALL HANDICAP ACCESS RAMP PER DETAIL B SHEET C.501
- ⑱ INSTALL DUMPSTER PAD PER DETAIL F, SEE ARCHITECTURAL PLANS FOR ENCLOSURE DETAILS
- ⑲ INSTALL MODIFIED CURB PER SANTAQUIN CITY STANDARD DRAWING CG4 ON SHEET C.507
- ⑳ INSTALL SINGLE PATH TRAIL PER SANTAQUIN CITY STANDARD DRAWING T1 ON SHEET C.507
- ㉑ PROVIDE 6" BERM ALONG UNDEVELOPED SURFACE TO MINIMIZE POTENTIAL STORM WATER RUN OFF FROM RECYCLED ASPHALT. BERM PER DETAIL SHEETS C.105 AND C.107.
- ㉒ INSTALL 6'-0" TO 7'-0" CONCRETE RETAINING WALL WITH 42" 2 rail FENCE FOR FALL PROTECTION PER DETAIL ON SHEET C.501
- ㉓ INSTALL SIMTEK FENCE
- ㉔ END ASPHALT W/ WEDGE, INSTALL 3" Ø50 RIP RAP W/ MIRFL-FILTER MEDIUM



- GENERAL NOTES**
- 1. THE DEVELOPER AND THE GENERAL CONTRACTOR UNDERSTAND THAT IT IS HIS/HER RESPONSIBILITY TO ENSURE THAT ALL IMPROVEMENTS INSTALLED WITHIN THIS DEVELOPMENT ARE CONSTRUCTED IN FULL COMPLIANCE WITH ALL STATE AND SANTAQUIN CITY CODES, ORDINANCES AND STANDARDS. THESE PLANS ARE NOT ALL INCLUSIVE OF ALL MINIMUM CODES, ORDINANCES, AND STANDARDS. THIS FACT DOES NOT RELIEVE THE DEVELOPER OR GENERAL CONTRACTOR FROM FULL COMPLIANCE WITH ALL MINIMUM STATE AND SANTAQUIN CITY CODES, ORDINANCES AND STANDARDS.
 - 2. ALL RECOMMENDATIONS MADE IN A PERTINENT GEOTECHNICAL REPORT/STUDY SHALL BE FOLLOWED EXPLICITLY DURING CONSTRUCTION OF BUILDINGS AND SITE IMPROVEMENTS.

DISCLAIMER NOTE
UTILITY LOCATIONS SHOWN HEREON ARE APPROXIMATE ONLY. IT SHALL BE THE CONTRACTOR'S RESPONSIBILITY TO DETERMINE THE EXACT HORIZONTAL AND VERTICAL LOCATION OF ALL EXISTING UNDERGROUND AND OVERHEAD UTILITIES PRIOR TO COMMENCING CONSTRUCTION. NO REPRESENTATION IS MADE THAT ALL EXISTING UTILITIES ARE SHOWN HEREON. THE ENGINEER ASSUMES NO RESPONSIBILITY FOR UTILITIES NOT SHOWN OR UTILITIES NOT SHOWN IN THEIR PROPER LOCATION.

GILSON ENGINEERING
Consulting Engineers & Surveyors
12401 SOUTH 480 EAST BUILDING C UNIT 2, DRAAPER, UT 84002
PHONE: (801) 971-9414 FAX: (801) 971-9449

PROFESSIONAL ENGINEER
LICENSED 03/02/23
No. 362118
Bradley S. Gilson
STATE OF UTAH

REVISIONS

REV.	DATE	BY	DESCRIPTION
1	03/02/23	AG	ISSUE PERMITS & ADD STRIPING
2	10/26/23	TS	7' TO 4" WATER LINE
3	11/28/23	TS	LATERAL LOCATIONS
4	07/24/24	AG	ROOF DRAINS
5	10/28/24	TS	SOUTH EAST WALL

REVISIONS

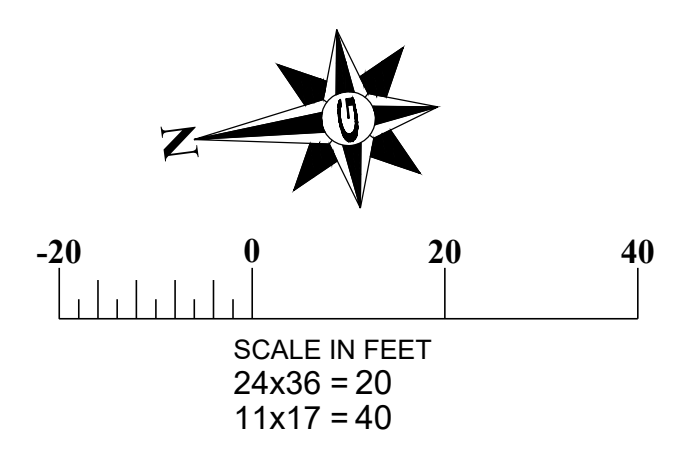
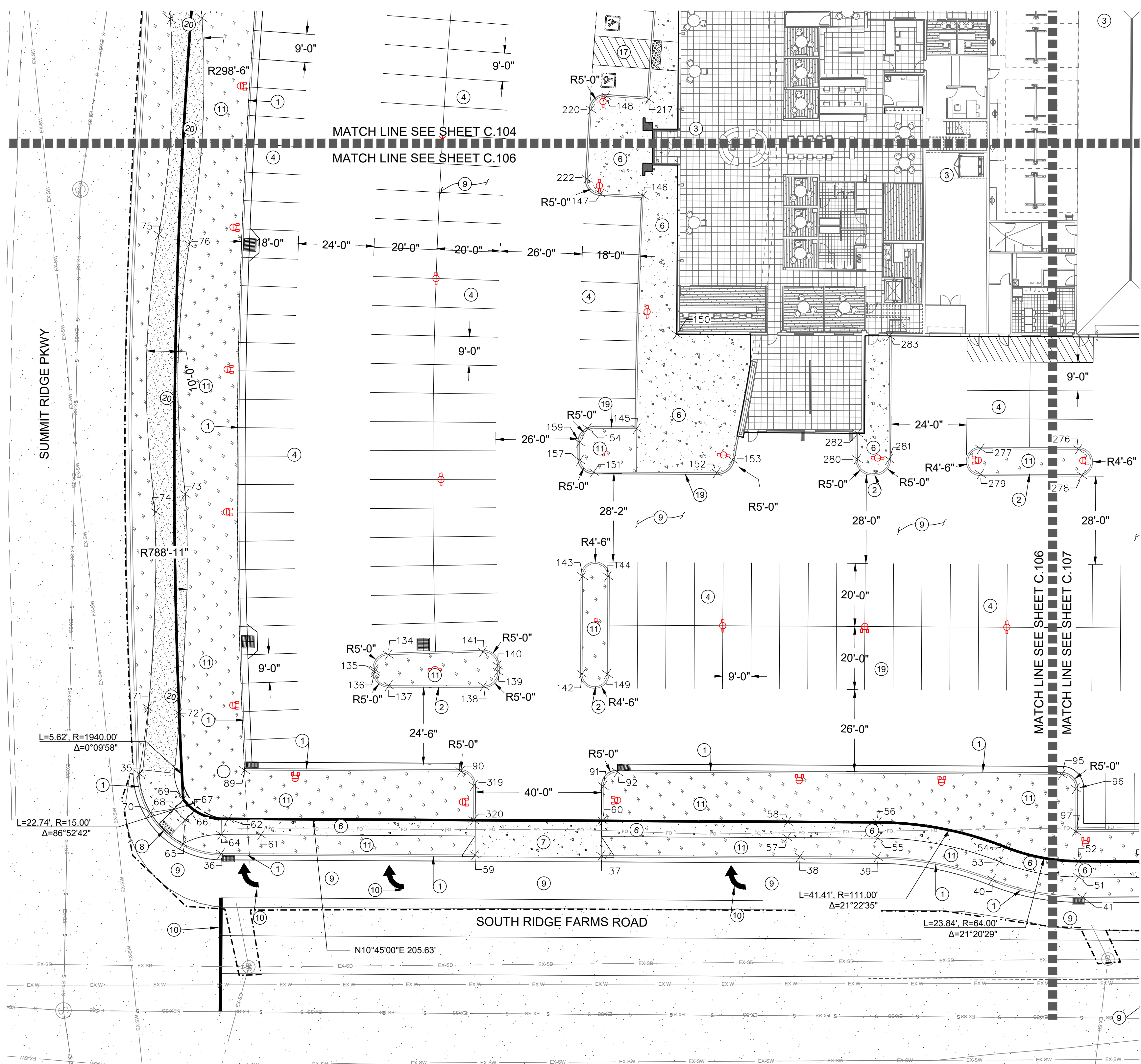
REV.	DATE	BY	DESCRIPTION
6	03/02/23	AG	SCALE MEASURES 1" ON FULL SIZE SHEET ADJUST FOR HALF SIZE SHEET

CHECKED: JAG
APPROVED: JAG

HORIZONTAL CONTROL PLAN
MURDOCK FORD SANTAQUIN
985 WEST SUMMIT RIDGE PKWY
SANTAQUIN, UTAH

REVISION: **F**
PROJ: **NCC.010**
C.105

CALL BEFORE YOU DIG.
IT'S FREE & IT'S THE LAW.
1-800-662-4111
208-2100
200 WEST 700 SOUTH, SUITE 101
SALT LAKE CITY, UTAH 84101



1. SEE SHEET C.104 FOR POINT TABLES.

CONSTRUCTION KEY NOTES
(NOT ALL KEY NOTES MAY BE USED ON THIS SHEET)

- ① INSTALL TYPE "E" CURB AND GUTTER PER CURRENT APWA STANDARD DRAWING NO. 205.2 SHEET C.506
- ② INSTALL TYPE "P" CURB AND GUTTER PER CURRENT APWA STANDARD DRAWING NO. 209 SHEET C.506
- ③ REFER TO ARCHITECTURAL PLANS FOR BUILDING INFORMATION
- ④ INSTALL 4" WIDE PAINTED WHITE PARKING LINES
- ⑤ INSTALL 3" WIDE CONCRETE WATERWAY SEE DETAIL G SHEET 501
- ⑥ INSTALL CONCRETE SIDEWALK PER SANTAQUIN CITY STANDARD DRAWING CG5, SHEET C.503
- ⑦ INSTALL DRIVE APPROACH PER SANTAQUIN CITY STANDARD DRAWING CG3, SHEET C.503
- ⑧ INSTALL CURB RAMP PER SANTAQUIN CITY STANDARD DRAWING CG2A, SHEET C.504
- ⑨ INSTALL 3" AC OVER 6" BASE. SEE DETAIL A SHEET C.501
- ⑩ INSTALL PAVEMENT MARKING PER LATEST VERSION OF THE M.U.T.C.D
- ⑪ SEE LANDSCAPE PLANS BY OTHERS
- ⑫ CONSTRUCT ROCKERY LANDSCAPE WALL SEE DETAIL C.501
- ⑬ INSTALL MODIFIED P CURB WALL PER DETAIL C ON SHEET C.501
- ⑭ FLAG POLE BY OTHERS
- ⑮ EXISTING FLAG POLE PROTECT IN PLACE
- ⑯ EXISTING MONUMENT SIGN PROTECT IN PLACE
- ⑰ INSTALL HANDICAP ACCESS RAMP PER DETAIL B SHEET C.501
- ⑱ INSTALL DUMPSTER PAD PER DETAIL F, SEE ARCHITECTURAL PLANS FOR ENCLOSURE DETAILS
- ⑲ INSTALL MODIFIED CURB PER SANTAQUIN CITY STANDARD DRAWING CG4 ON SHEET C.507
- ⑳ INSTALL SINGLE PATH TRAIL PER SANTAQUIN CITY STANDARD DRAWING T1 ON SHEET C.507
- ㉑ PROVIDE 6" BERM ALONG UNDEVELOPED SURFACE TO MINIMIZE POTENTIAL STORM WATER RUN OFF FROM RECYCLED ASPHALT. BERM PER DETAIL SHEETS C.105 AND C.107.
- ㉒ INSTALL 6'-0" TO 7'-0" CONCRETE RETAINING WALL WITH 42" 2 Rail FENCE FOR FALL PROTECTION PER DETAIL ON SHEET C.501
- ㉓ INSTALL SIMTEK FENCE
- ㉔ END ASPHALT W/ WEDGE, INSTALL 3" D50 RIP RAP W/ MIRFI FILTER MEDIAN

GENERAL NOTES

1. THE DEVELOPER AND THE GENERAL CONTRACTOR UNDERSTAND THAT IT IS HIS/HER RESPONSIBILITY TO ENSURE THAT ALL IMPROVEMENTS INSTALLED WITHIN THIS DEVELOPMENT ARE CONSTRUCTED IN FULL COMPLIANCE WITH ALL STATE AND SANTAQUIN CITY CODES, ORDINANCES AND STANDARDS. THESE PLANS ARE NOT ALL INCLUSIVE OF ALL MINIMUM CODES, ORDINANCES, AND STANDARDS. THIS FACT DOES NOT RELIEVE THE DEVELOPER OR GENERAL CONTRACTOR FROM FULL COMPLIANCE WITH ALL MINIMUM STATE AND SANTAQUIN CITY CODES, ORDINANCES AND STANDARDS.
2. ALL RECOMMENDATIONS MADE IN A PERTINENT GEOTECHNICAL REPORT/STUDY SHALL BE FOLLOWED EXPLICITLY DURING CONSTRUCTION OF BUILDINGS AND SITE IMPROVEMENTS.

DISCLAIMER NOTE

UTILITY LOCATIONS SHOWN HEREON ARE APPROXIMATE ONLY. IT SHALL BE THE CONTRACTOR'S RESPONSIBILITY TO DETERMINE THE EXACT HORIZONTAL AND VERTICAL LOCATION OF ALL EXISTING UNDERGROUND AND OVERHEAD UTILITIES PRIOR TO COMMENCING CONSTRUCTION. NO REPRESENTATION IS MADE THAT ALL EXISTING UTILITIES ARE SHOWN HEREON. THE ENGINEER ASSUMES NO RESPONSIBILITY FOR UTILITIES NOT SHOWN OR UTILITIES NOT SHOWN IN THEIR PROPER LOCATION.

CALL BEFORE YOU DIG.
IT'S FREE & IT'S THE LAW.
1-800-662-4111
208-2100
SALT LAKE CITY, UT 84119

GILSON ENGINEERING
Consulting Engineers & Surveyors
12401 SOUTH 480 EAST BUILDING C UNIT 2, DRAAPER, UT 84020
PHONE: (801) 971-9414 FAX: (801) 971-9449

PROFESSIONAL ENGINEER
LICENSED IN THE STATE OF UTAH
03/02/23
No. 362118
Bradley S. Gilson

REVISIONS

REV.	DATE	BY	DESCRIPTION
C	10/26/23	JAG	MOVE ISLANDS & ADD STRIPING
D	11/28/23	TS	2" TO 4" WATER LINE
E	11/28/23	TS	LATERAL LOCATIONS
F	07/24/24	JAG	ROOF DRAINS
G	10/29/24	TS	SOUTH EAST WALL

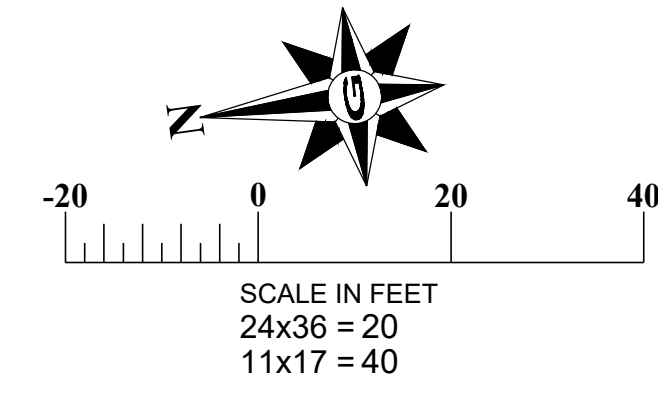
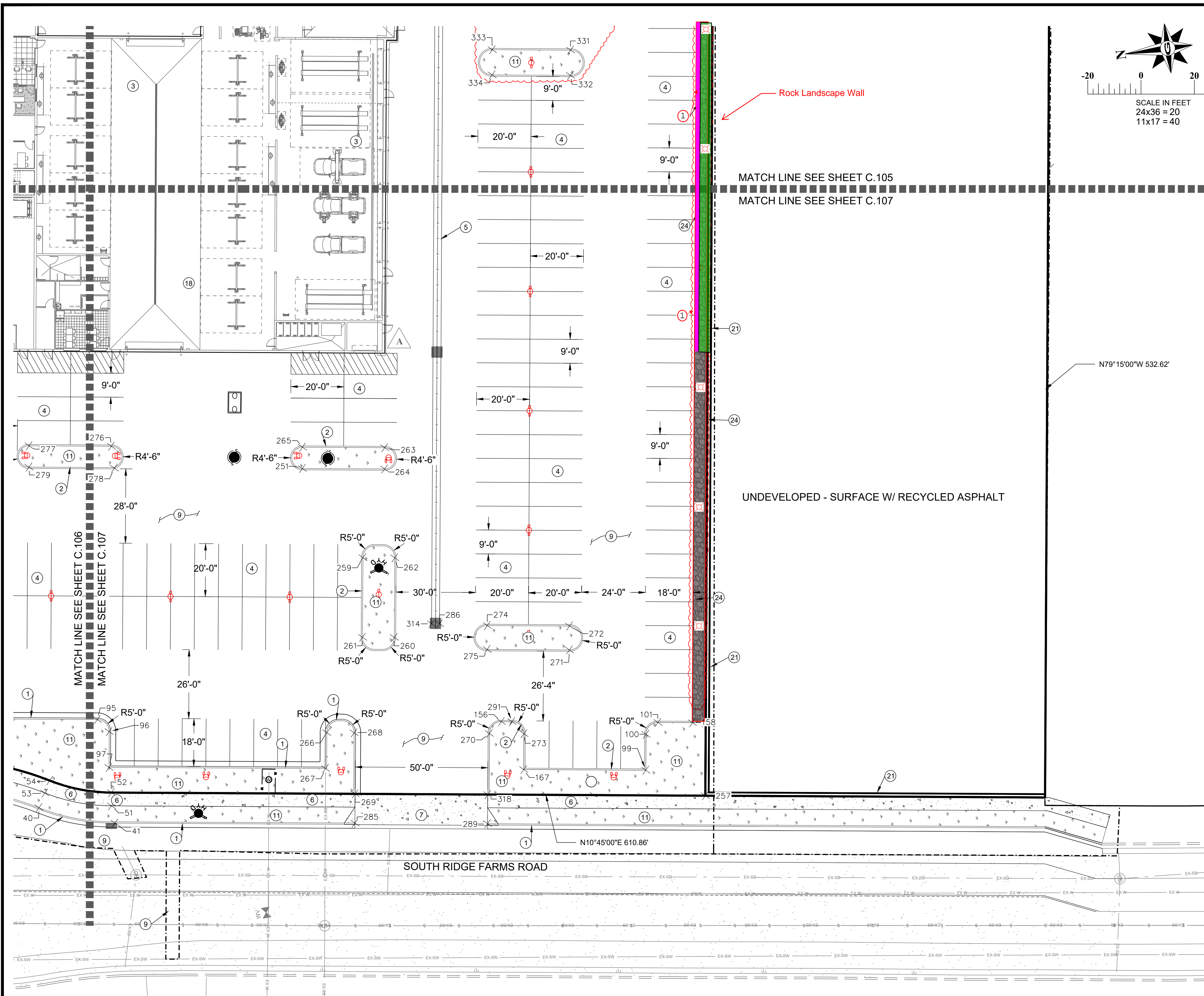
MARCH 2023

REV.	DATE	BY	DESCRIPTION
C	10/26/23	JAG	MOVE ISLANDS & ADD STRIPING
D	11/28/23	TS	2" TO 4" WATER LINE
E	11/28/23	TS	LATERAL LOCATIONS
F	07/24/24	JAG	ROOF DRAINS
G	10/29/24	TS	SOUTH EAST WALL

DESIGNED BY: JAG
CHECKED: JAG
APPROVED: JAG

HORIZONTAL CONTROL PLAN
MURDOCK FORD SANTAQUIN
985 WEST SUMMIT RIDGE PKWY
SANTAQUIN, UTAH

REVISION: **F**
PROJ: **NCC.010**
C.106

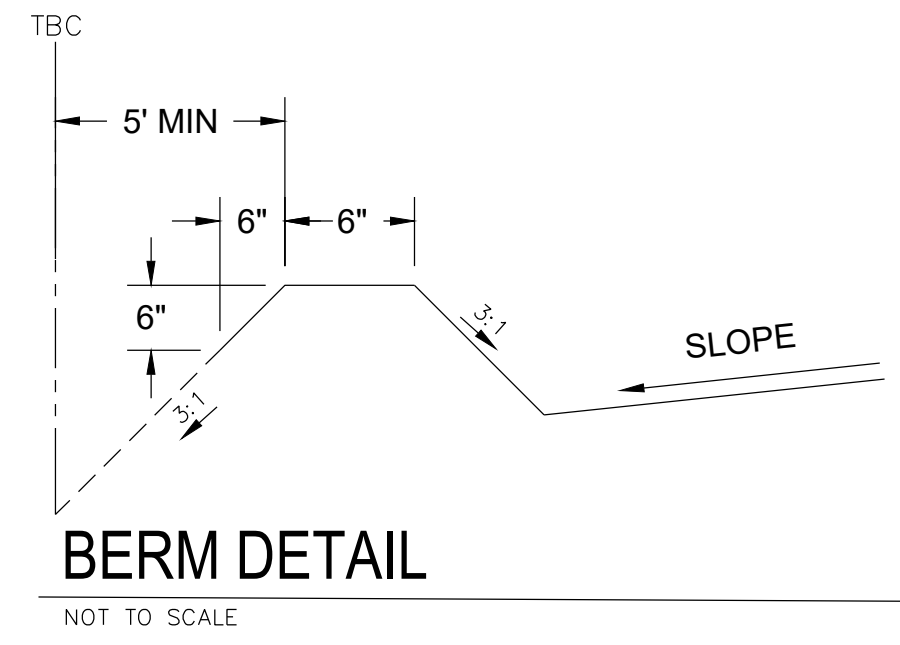


1. SEE SHEET C.104 FOR POINT TABLES.

CONSTRUCTION KEY NOTES

(NOT ALL KEY NOTES MAY BE USED ON THIS SHEET)

1. INSTALL TYPE "E" CURB AND GUTTER PER CURRENT APWA STANDARD DRAWING NO. 205.2 SHEET C.506
2. INSTALL TYPE "P" CURB AND GUTTER PER CURRENT APWA STANDARD DRAWING NO. 209 SHEET C.506
3. REFER TO ARCHITECTURAL PLANS FOR BUILDING INFORMATION
4. INSTALL 4" WIDE PAINTED WHITE PARKING LINES
5. INSTALL 3' WIDE CONCRETE WATERWAY SEE DETAIL G SHEET 501
6. INSTALL CONCRETE SIDEWALK PER SANTAQUIN CITY STANDARD DRAWING CG5, SHEET C.503
7. INSTALL DRIVE APPROACH PER SANTAQUIN CITY STANDARD DRAWING CG3, SHEET C.503
8. INSTALL CURB RAMP PER SANTAQUIN CITY STANDARD DRAWING CG2A, SHEET C.504
9. INSTALL 3" AC OVER 6" BASE. SEE DETAIL A SHEET C.501
10. INSTALL PAVEMENT MARKING PER LATEST VERSION OF THE M.U.T.C.D
11. SEE LANDSCAPE PLANS BY OTHERS
12. CONSTRUCT ROCKERY LANDSCAPE WALL SEE DETAIL C.501
13. INSTALL MODIFIED P CURB WALL PER DETAIL C ON SHEET C.501
14. FLAG POLE BY OTHERS
15. EXISTING FLAG POLE PROTECT IN PLACE
16. EXISTING MONUMENT SIGN PROTECT IN PLACE
17. INSTALL HANDICAP ACCESS RAMP PER DETAIL B SHEET C.501
18. INSTALL DUMPSTER PAD PER DETAIL F, SEE ARCHITECTURAL PLANS FOR ENCLOSURE DETAILS
19. INSTALL MODIFIED CURB PER SANTAQUIN CITY STANDARD DRAWING CG4 ON SHEET C.507
20. INSTALL SINGLE PATH TRAIL PER SANTAQUIN CITY STANDARD DRAWING T1 ON SHEET C.507
21. PROVIDE 6" BERM ALONG UNDEVELOPED SURFACE TO MINIMIZE POTENTIAL STORM WATER RUN OFF FROM RECYCLED ASPHALT. BERM PER DETAIL SHEETS C.105 AND C.107.
22. INSTALL 6'-0" TO 7'-0" CONCRETE RETAINING WALL WITH 42" 2 Rail FENCE FOR FALL PROTECTION PER DETAIL ON SHEET C.501
23. INSTALL SIMTEK FENCE
24. END ASPHALT ~~W/ WEDGE. INSTALL 3" R60 RIB PAD W/ WEDGE AFTER MEDIAN~~



- ### GENERAL NOTES
1. THE DEVELOPER AND THE GENERAL CONTRACTOR UNDERSTAND THAT IT IS HIS/HER RESPONSIBILITY TO ENSURE THAT ALL IMPROVEMENTS INSTALLED WITHIN THIS DEVELOPMENT ARE CONSTRUCTED IN FULL COMPLIANCE WITH ALL STATE AND SANTAQUIN CITY CODES, ORDINANCES AND STANDARDS. THESE PLANS ARE NOT ALL INCLUSIVE OF ALL MINIMUM CODES, ORDINANCES, AND STANDARDS. THIS FACT DOES NOT RELIEVE THE DEVELOPER OR GENERAL CONTRACTOR FROM FULL COMPLIANCE WITH ALL MINIMUM STATE AND SANTAQUIN CITY CODES, ORDINANCES AND STANDARDS.
 2. ALL RECOMMENDATIONS MADE IN A PERTINENT GEOTECHNICAL REPORT/STUDY SHALL BE FOLLOWED EXPLICITLY DURING CONSTRUCTION OF BUILDINGS AND SITE IMPROVEMENTS.

DISCLAIMER NOTE
 UTILITY LOCATIONS SHOWN HEREON ARE APPROXIMATE ONLY. IT SHALL BE THE CONTRACTOR'S RESPONSIBILITY TO DETERMINE THE EXACT HORIZONTAL AND VERTICAL LOCATION OF ALL EXISTING UNDERGROUND AND OVERHEAD UTILITIES PRIOR TO COMMENCING CONSTRUCTION. NO REPRESENTATION IS MADE THAT ALL EXISTING UTILITIES ARE SHOWN HEREON. THE ENGINEER ASSUMES NO RESPONSIBILITY FOR UTILITIES NOT SHOWN OR UTILITIES NOT SHOWN IN THEIR PROPER LOCATION.

CALL BEFORE YOU DIG.
 IT'S FREE & IT'S THE LAW.
 1-800-662-4111
 208-2100
200 WEST 700 SOUTH, SUITE 101 SALT LAKE CITY, UTAH 84101

TILSON ENGINEERING
 Consulting Engineers & Surveyors
 12401 SOUTH 480 EAST BUILDING C UNIT 2, DRAPER, UT 84020
 PHONE: (801) 971-9414 FAX: (801) 971-9449

PROFESSIONAL ENGINEER
 LICENSE NO. 362118
 BRADLEY S. GILSON
 STATE OF UTAH

REVISIONS

REV	DATE	BY	DESCRIPTION
1	03/02/23	JAG	ISSUE PERMITS & ADD STRIPING
2	10/26/23	TS	7" TO 4" WATER LINE
3	11/28/23	TS	LATERAL LOCATIONS
4	07/24/24	JAG	ROOF DRAINS
5	10/29/24	TS	SOUTH EAST WALL

REVISIONS

REV	DATE	BY	DESCRIPTION
6	03/02/23	JAG	1" SCALE MEASURES 1" ON FULL SIZE SHEET ADJUST FOR HALF SIZE SHEET

HORIZONTAL CONTROL PLAN
 MURDOCK FORD SANTAQUIN
 985 WEST SUMMIT RIDGE PKWY
 SANTAQUIN, UTAH

REVISION: **F**
 PROJ: **NCC.010**
C.107