

**SAN JUAN COUNTY UTAH
ORDINANCE NO 2021-11B**

AN ORDINANCE AMENDING ORDINANCE 2021-11A OF THE SAN JUAN COUNTY BOARD OF COMMISSIONERS REDISTRICTING THE BOARD OF COMMISSION AND SCHOOL BOARD VOTING DISTRICTS AS REQUIRED BY UTAH STATUTE.

WHEREAS, pursuant to Utah Code Annotated §20A-5-303. Duties of the County and Municipal Legislative Bodies Section establishing, dividing, abolishing, and changing Voting Districts -- Common polling places -- Combined voting districts; and

WHEREAS, based upon the results of the Decennial Census, in the event that any Districts need to be redrawn, changes of which shall comply with State and Federal law meeting constitutional requirements, including the same requirements and limitations imposed upon the County by the U.S. District Court for the District of Utah when it mandated redistricting of County Commission and School Board Districts in the case of *Navajo Nation et al. v. San Juan County, Civ. No. 2:12-CV-0039-RJS*; and

WHEREAS, on or about April 26, 2021, the United States Census Bureau published the most recent Decennial Census report; and

WHEREAS, on August 17, 2021, San Juan County executed a contract with William Cooper at the request of the Board of San Juan County Commissioner to assist the County in consulting, establishing, to divide, abolish, and change voting districts if the population changes in the Decennial Census warrants that our voting districts need to be adjusted to satisfy the population, compactness, contiguity, minority representation, community of interests are still in compliance with one person one vote principles and those of the Voting Rights Act; and

WHEREAS, William Cooper has presented the map options on October 14, October 29, November 13 in Public Meetings, on November 30th during the Virtual Public Hearing specifically to present the maps along with his independent consultation regarding viability; and

WHEREAS, William Cooper has been willing to review redistricting maps recommended by the County Clerk/Auditor's Office, the Navajo Nation's Human Rights' preferences, the San Juan County School Board recommended adjustments and any other map or suggested maps; and

WHEREAS, during the COVID Pandemic, County staff has solicited comments both virtually, in-person during public comment periods of the San Juan County Commission Meetings, through a form created on the County website, through emails with the Navajo Nation Chapters, through the County Elections Navajo Speaking Liaisons who presented the comment forms and solicited comments in Navajo to the Utah Chapters of the Navajo Nation and in a presentation to the School Board and the Utah Navajo Commission; and

WHEREAS, the San Juan County Board of Commissioners, after soliciting input from affected school districts in San Juan County, input from the general public, including political representatives from Cities and Towns within San Juan County, the Navajo Nation and all citizens wishing to provide input, has provided recommendations for redistricted voting precinct maps for its consideration; and

WHEREAS, the San Juan County Board of Commissioners, acting in its capacity as county legislative body for San Juan County, now intends to adopt plans redistricting Commission Districts 1, 2 and 3 as well as local School Districts 1, 2, 3, 4 and 5 located within San Juan County whose boundaries encompass more than a single municipality as required by and in a manner consistent with the applicable legal requirements of Federal and State law; and

WHEREAS, San Juan County acknowledges the participation of Grand County and the redistricting of the Grand School District portions within the portion of San Juan County which is divided along Spanish Valley Drive and the La Sal Mountain Loop Road, with the eastern part belonging to Grand School Board District 1 and the western part belonging to Grand School Board District 5 of which Grand County is responsible for redistricting; and

WHEREAS, within 30 days after the establishment, division, abolition, or change of a voting precinct, the San Juan County Board of Commissioners shall file with the Utah Geospatial Resource Center, created under Section 63A-16-505, a notice describing the action taken and specifying the resulting boundaries of each voting precinct affected by the action.

WHEREAS, the Board of San Juan County Commissioners Passed, Adopted and Approved the San Juan County Commission Districts as indicated in "Attachment A" by adopting Ordinance 2021-11; and

WHEREAS, the Board of San Juan County Commissioners Passed, Adopted and Approved the San Juan School Board District Map, "San Juan County School Board Districts Option B Modified" on January 4, 2021 by adopting Ordinance 2021-11A; and

WHEREAS, the Navajo Nation Human Rights Commission has since provided a newly proposed San Juan School Board District Map, "NNHRC Plan San Juan County School Board Eastland Adjustment January 7, 2022"; and

WHEREAS, the adjustments to the aforementioned map keeps the intent of January 4th's Ordinance 2021-11A allowing for a district shift of District 1 in to District 4 to encompass more of Eastland aligning the Monticello School Boundaries; and

WHEREAS, the adjustments also include a more balanced population deviation of no more than 2.5% deviation closer to the intent in the finalized judgement issued by the Court, *Case No. 2:12-CV-00039-RJS-DBP*; and

WHEREAS, this ordinance shall become effective fifteen (15) days after its passage and upon at least one publication of the ordinance or a summary thereof in a newspaper published and having general circulation in San Juan County.

NOW, THEREFORE, BE IT HEREBY ORDAINED BY THE COUNTY LEGISLATIVE BODY OF SAN JUAN COUNTY, UTAH, THAT: the Board of San Juan County Commissioners

PASSED, ADOPTED, AND APPROVED the amendment and Redistricted Map incorporated within as "Attachment B, NNHRC Plan San Juan County School Board Eastland Adjustment

January 7, 2022", **San Juan School Board Districts**, by the Board of San Juan County Commissioners this 18th day of January 2022, by the following vote:

Those voting aye:

Those voting nay:

Those absent or abstaining:

BOARD OF SAN JUAN COUNTY COMMISSIONERS

Willie Grayeyes, Chair

ATTEST:

Lyman Duncan, Clerk/Auditor

####

Attachment A
San Juan County Commission Districts

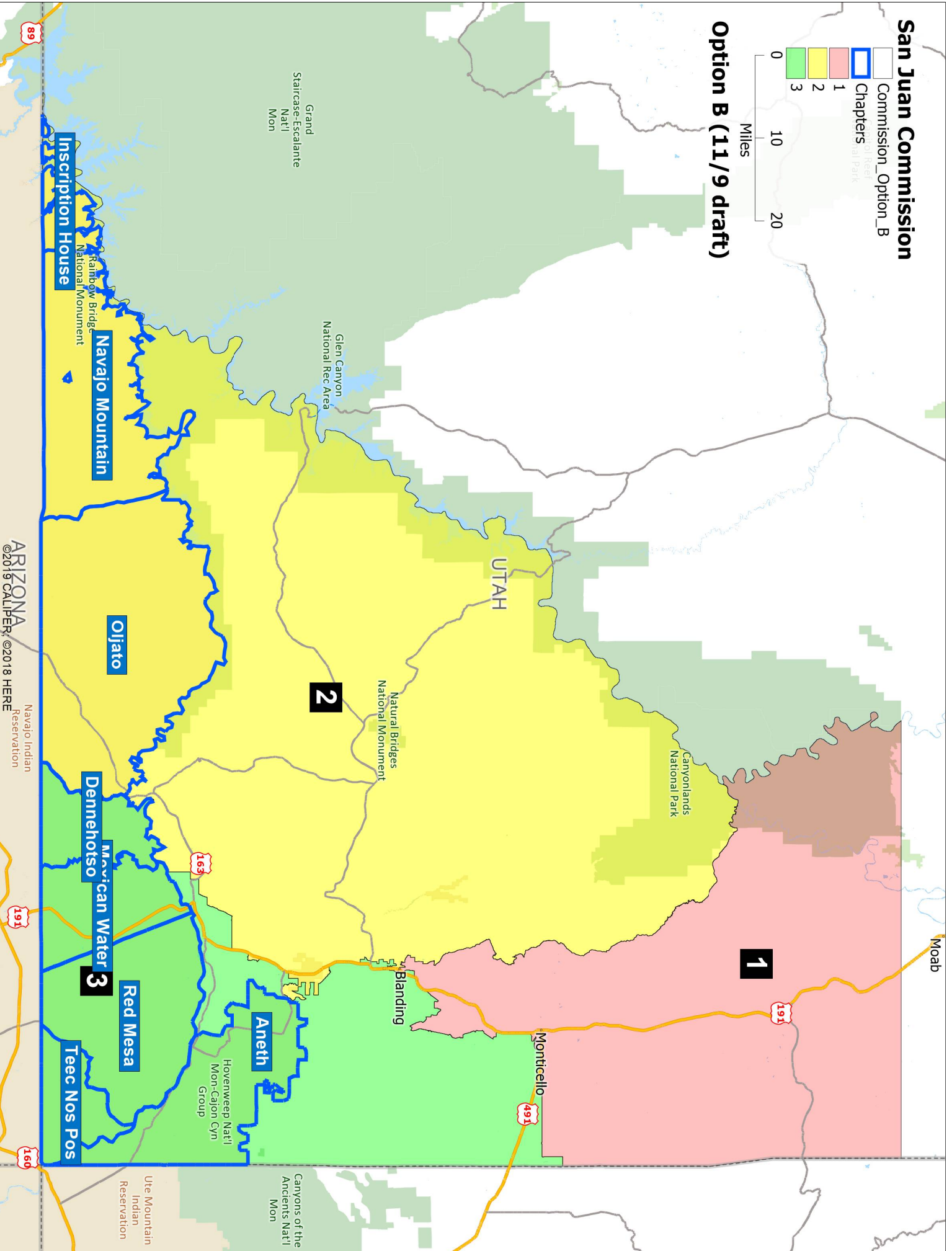
San Juan Commission

- Commission_Option_B
- Chapters

- 1
- 2
- 3

Miles 0 10 20

Option B (11/9 draft)



Population Summary Report

San Juan County, UT – Option B Commission Plan -- 2020 Census (11/9 draft)

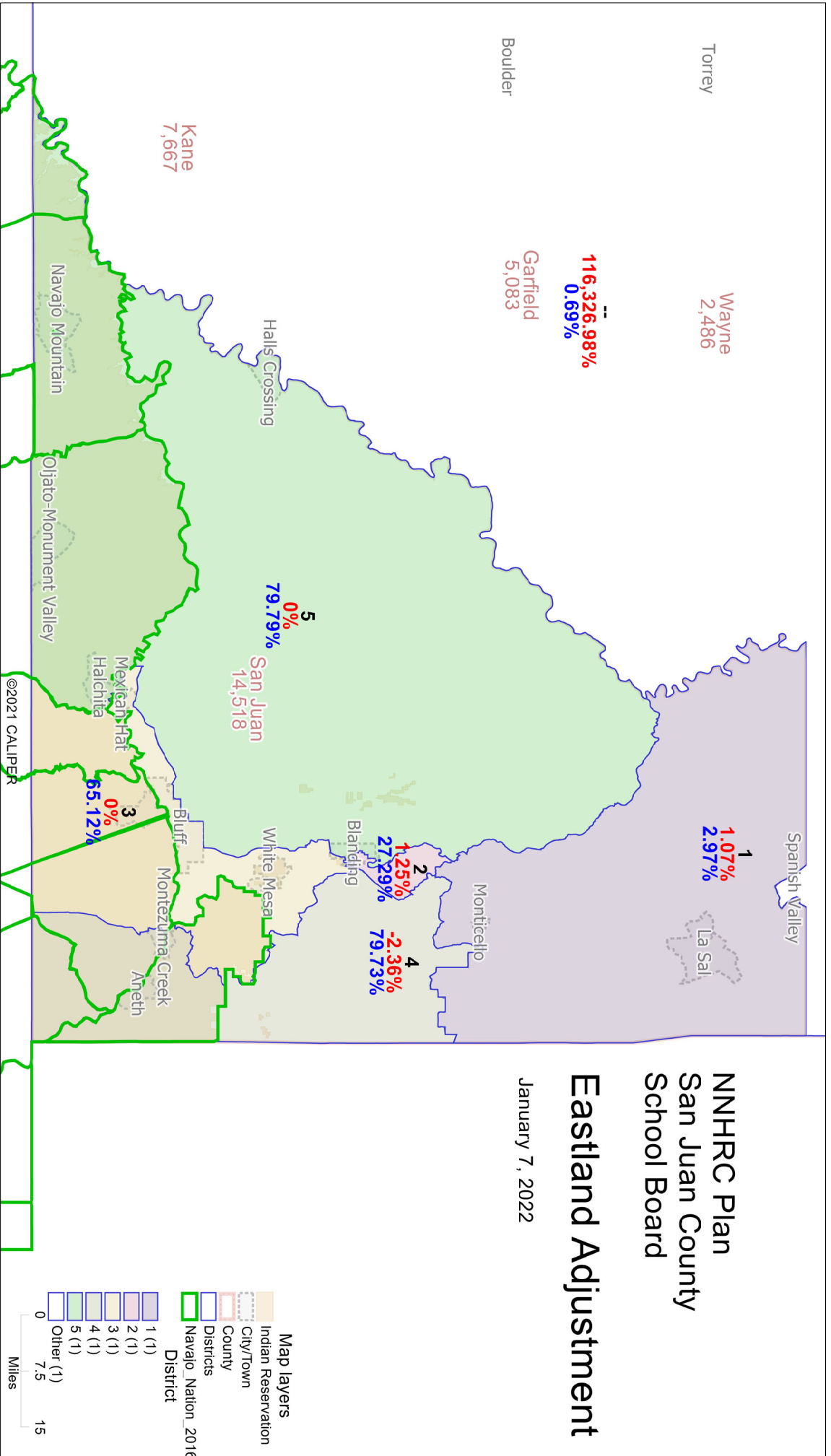
District	Population	Deviation	% Deviation	Single-race Indigenous	% Single-race Indigenous	Any Part Indigenous	% Any Part Indigenous	Latino	% Latino	NH White	% NH White
1	4837	-2	-0.04%	360	7.44%	471	9.74%	461	9.53%	3851	79.62%
2	4840	1	0.02%	3268	67.52%	3357	69.36%	176	3.64%	1210	25.00%
3	4841	2	0.04%	3650	75.40%	3755	77.57%	110	2.27%	977	20.18%
Total	14518			7278	50.13%	7583	52.23%	747	5.15%	6038	41.59%
Total Deviation		0.08%									
District	18+_Pop	18+ SR Indigenous	% 18+ SR Indigenous	18+ NH AP Indigenous	% 18+ NH AP Indigenous	18+ AP Indigenous	% 18+ AP Indigenous	18+_Latino	% 18+_Latino	18+ NH White	% 18+ NH White
1	3395	236	6.95%	266	7.84%	291	8.57%	305	8.98%	2739	80.68%
2	3399	2251	66.23%	2283	67.17%	2300	67.67%	105	3.09%	919	27.04%
3	3548	2645	74.55%	2673	75.34%	2695	75.96%	68	1.92%	765	21.56%
Total	10342	5132	49.62%	5222	50.49%	5286	51.11%	478	4.6%	4423	42.77%

Attachment B
NNHRC Plan San Juan County School Board Eastland Adjustment January 7, 2022

NNHRC Plan San Juan County School Board

Eastland Adjustment

January 7, 2022



Map layers

- Indian Reservation
- City/Town
- County
- Districts
- Navajo_Nation_2016

District

- 1 (1)
- 2 (1)
- 3 (1)
- 4 (1)
- 5 (1)
- Other (1)

Miles 0 7.5 15

©2021 CALIPER

San Juan County
School Board Election Districts
Submitted by Navajo Nation Human Rights Commission

District	Population	Deviation	% Deviation	NH_Ind	% NH_Ind	NH18+_Ind	% NH18+_Ind	AP_Ind	% AP_Ind	18+_Pop	% 18+_Pop	Hispanic Origin	% Hispanic Origin	American Indian	% American Indian
1	2,828	30	1.07%	99	3.50%	61	2.97%	189	6.68%	2,054	72.63%	335	11.85%	123	4.35%
2	2,833	35	1.25%	778	27.46%	512	27.29%	883	31.17%	1,876	66.22%	140	4.94%	794	28.03%
3	2,798	0	0.00%	1,849	66.08%	1,294	65.12%	1,923	68.73%	1,987	71.02%	114	4.07%	1,876	67.05%
4	2,732	-66	-2.36%	2,159	79.03%	1,593	79.73%	2,235	81.81%	1,998	73.13%	52	1.90%	2,175	79.61%
5	2,798	0	0.00%	2,281	81.52%	1,623	79.79%	2,332	83.35%	2,034	72.69%	74	2.64%	2,289	81.81%