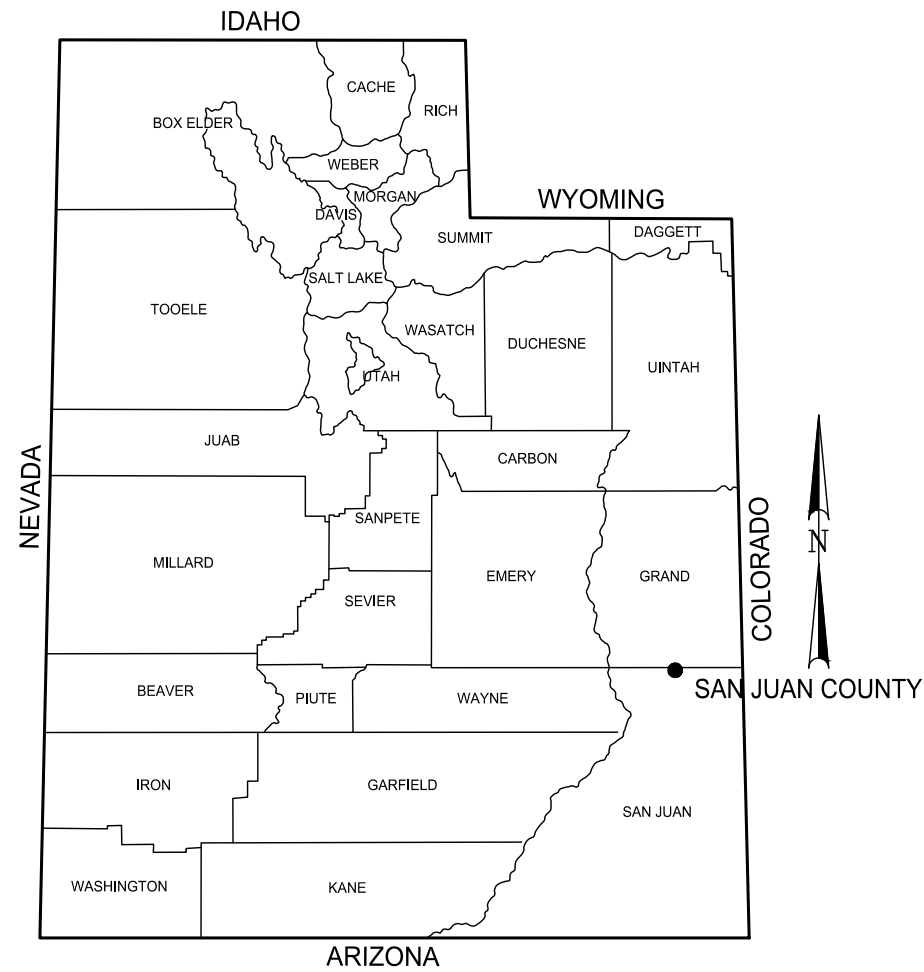


SAN JUAN COUNTY PACK CREEK FIRE HMGP SAN JUAN COUNTY, SAN JUAN, UTAH 2024

PROJECT NO.	SHEET NO.
2111-005	1
SUBMITTAL: REVIEW - NOT FOR CONSTRUCTION	



VICINITY MAP

APPROVAL

RECOMMENDED FOR APPROVAL: _____

_____ DATE

APPROVED: _____

SAN JUAN COUNTY _____ DATE

Sheet List Table	
Sheet Number	Sheet Title
1	TITLE
1A	LEGEND
C-200	OVERALL SITE PLANE
C-201	CHANNEL IMPROVEMETNS PLAN AND PROFILE
C-202	CHANNEL IMPROVEMETNS PLAN AND PROFILE
C-204	DETENTION POND No. 1 PLAN AND PROFILE
C-203	DETENTION POND No. 2 PLAN AND PROFILE
C-205	ACCESS ROAD PLAN AND PROFILE
C-501	DETAILS
C-504	DETAILS

Jones & DeMille Engineering, Inc.

CIVIL & STRUCTURAL ENGINEERING - SURVEYING
GIS - ENVIRONMENTAL - MATERIALS TESTING

- shaping the quality of life -

1.800.748.5275 www.jonesanddemille.com

LEGEND

EXISTING FEATURES

	SANITARY SEWER LINE
	SANITARY SEWER MANHOLE
	CULINARY WATER LINE
	CULINARY WATER VALVE
	BURIED POWER LINE
	OVERHEAD POWER LINE
	BURIED TELEPHONE LINE
	OVERHEAD TELEPHONE LINE
	BURIED CABLE TV LINE
	OVERHEAD CABLE TV LINE
	FIBER OPTIC LINE
	NATURAL GAS LINE
	IRRIGATION LINE
	STORM DRAIN
	FENCE LINE (BARBED OR STOCKTIGHT)
	FENCE LINE (CHAIN LINK)
	DRAINAGE CULVERT
	CONCRETE SURFACING (SIDEWALK, CURB, GUTTER, ETC.)
	FLOW LINE OF DITCH
	EDGE OF ASPHALT SURFACING
	EDGE OF GRAVEL SURFACING
	EDGE OF DIRT SURFACING
	FIRE HYDRANT
	WATER METER
	GAS METER
	STRUCTURE
	POWER POLE & GUY WIRE
	SANITARY SEWER CLEAN OUT
	TREE
	DELINEATOR POST
	STREET SIGN
	TELEPHONE PEDESTAL
	MAILBOX
	CABLE TV PEDESTAL
	WATER MANHOLE
	LIGHT POLE

MISC. FEATURES

	SUBDIVISION BOUNDARY LINE
	LOT LINES
	EXISTING RIGHT OF WAY LINE
	EXISTING N/A LINE
	EXISTING CITY BLOCK LINES
	PROPOSED RIGHT-OF-WAY LINE
	SECTION LINE
	QUARTER SECTION LINE
	(P.U.E.) PUBLIC UTILITY EASEMENT
	DEED LINE
	PROPERTY LINE

ABBREVIATIONS

TBC	TOP BACK OF CURB	EPP	POWER POLE
FLG	FLOW LINE OF GUTTER	SMH	SEWER MANHOLE
LOC	LIP OF CURB	CMH	COMMUNICATION MANHOLE
TSW	TOP OF SIDEWALK	R/W	RIGHT-OF-WAY
TOC	TOP OF CONCRETE	T.C.E.	TEMPORARY CONSTRUCTION EASEMENT
EOA	EDGE OF ASPHALT	P.U.E.	PUBLIC UTILITY EASEMENT
TOA	TOP OF ASPHALT	STA	STATION
TOG	TOP OF GRATE	L / LT	LEFT
FLC	FLOW LINE OF CULVERT	R / RT	RIGHT
SW	SIDEWALK		
FG	FINISHED GROUND		

PROPOSED FEATURES

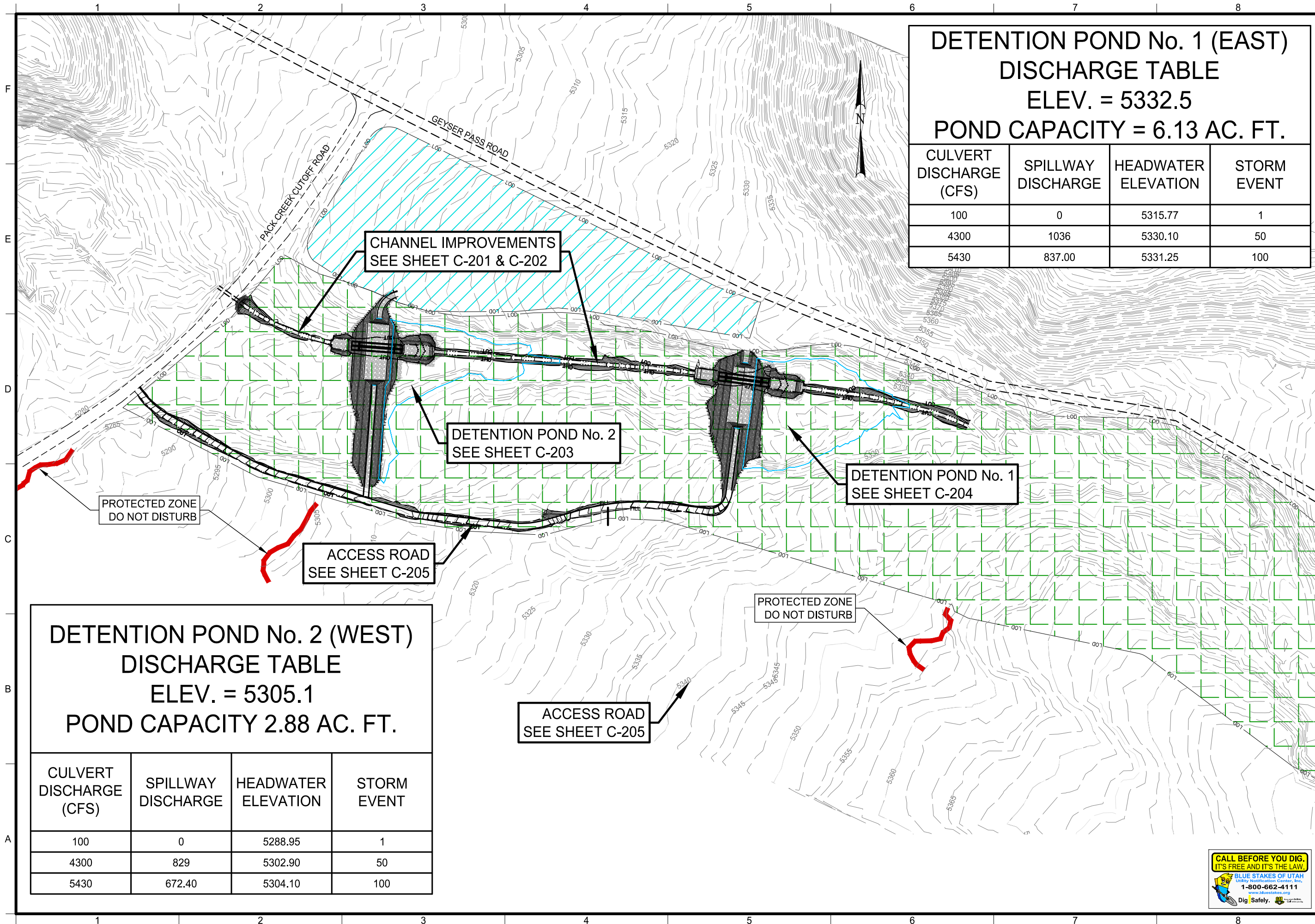
	SANITARY SEWER LINE
	SANITARY SEWER MANHOLE
	SANITARY SEWER SERVICE
	CULINARY WATER LINE
	CULINARY WATER VALVE
	BURIED POWER LINE
	OVERHEAD POWER LINE
	BURIED TELEPHONE LINE
	OVERHEAD TELEPHONE LINE
	BURIED CABLE TV LINE
	OVERHEAD CABLE TV LINE
	FIBER OPTIC LINE
	NATURAL GAS LINE
	IRRIGATION LINE
	STORM DRAIN
	FENCE LINE (BARBED OR STOCKTIGHT)
	FENCE LINE (CHAIN LINK)
	DRAINAGE CULVERT
	EDGE OF ASPHALT
	EDGE OF CONCRETE
	FIRE HYDRANT
	CULINARY WATER METER
	GAS METER
	DELINEATOR POST
	STREET SIGN
	POWER POLE
	MAILBOX
	LIGHT POLE
	CONCRETE SURFACING
	ASPHALT SURFACING
	TOP OF CUT LIMITS
	TOE OF FILL LIMITS

Jones & DeMille Engineering, Inc.
 CIVIL & STRUCTURAL ENGINEERING - SURVEYING
 GIS - ENVIRONMENTAL - MATERIALS TESTING
 1,800.748.5275 www.jonesanddemille.com

SAN JUAN COUNTY
 PACK CREEK FIRE HMGP
 LEGEND
 PROJECT NUMBER: 2111-005
 SUBMITTAL: REVIEW - NOT FOR CONSTRUCTION

SAN JUAN COUNTY
 SHEET NO. 1A

REVISIONS
 DWG NAME: H:\JD\Proj\2111-005\dwg\TITLE.dwg
 SCALE: NONE
 UPDATED: 5/24/2024
 PLOTTED: 5/24/2024



**DETENTION POND No. 1 (EAST)
DISCHARGE TABLE
ELEV. = 5332.5
POND CAPACITY = 6.13 AC. FT.**

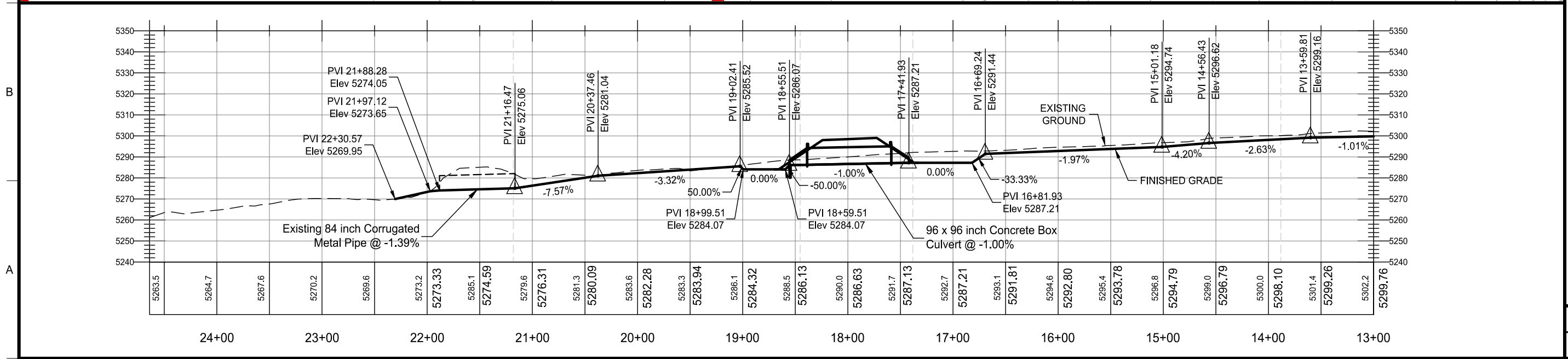
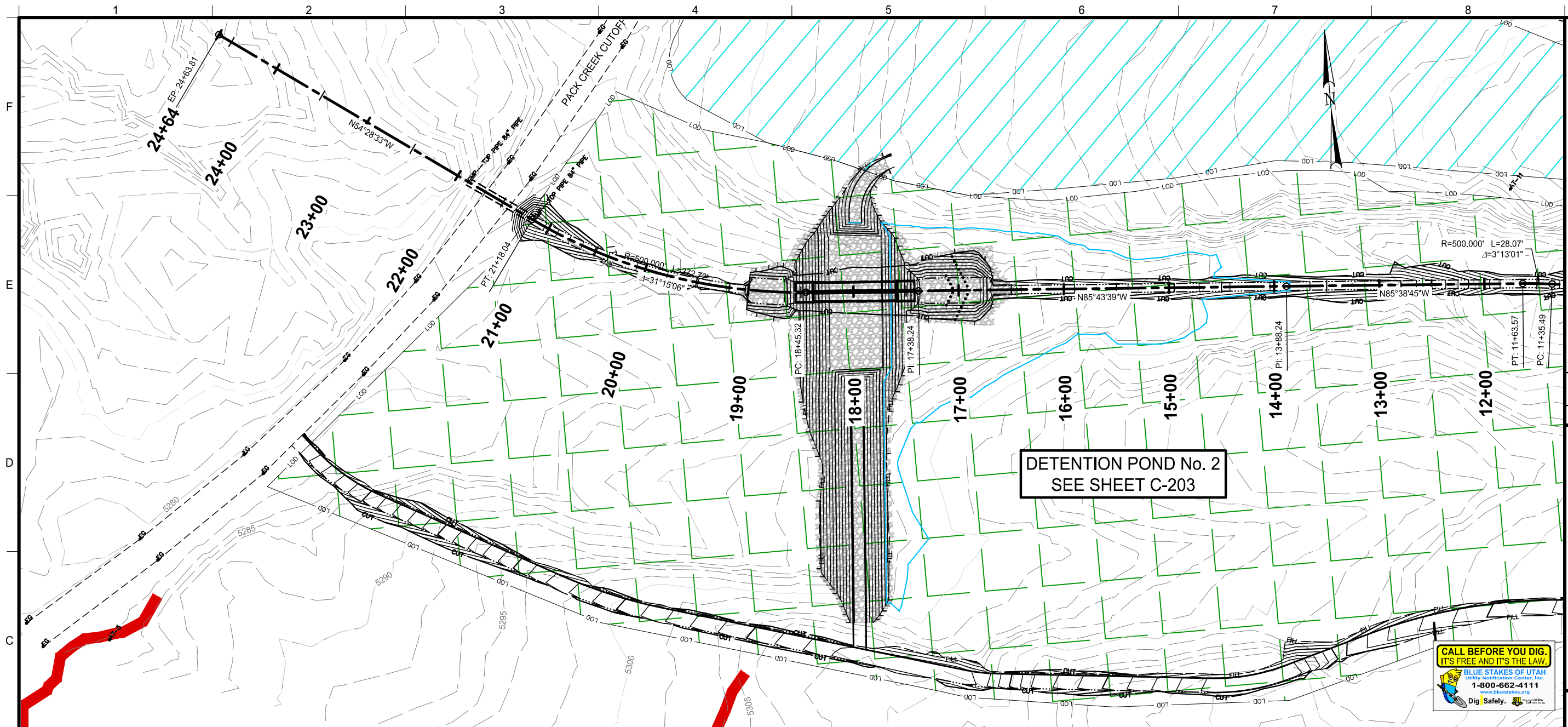
CULVERT DISCHARGE (CFS)	SPILLWAY DISCHARGE	HEADWATER ELEVATION	STORM EVENT
100	0	5315.77	1
4300	1036	5330.10	50
5430	837.00	5331.25	100

**DETENTION POND No. 2 (WEST)
DISCHARGE TABLE
ELEV. = 5305.1
POND CAPACITY 2.88 AC. FT.**

CULVERT DISCHARGE (CFS)	SPILLWAY DISCHARGE	HEADWATER ELEVATION	STORM EVENT
100	0	5288.95	1
4300	829	5302.90	50
5430	672.40	5304.10	100

REVISIONS		DWG NAME: H:\JDI\Proj\2111-005.dwg	DATE: 5/24/2024
NO.	DATE	DESCRIPTION	DATE
REMARKS		PROJECT NUMBER: 2111-005	SCALE: 1" = 100'
<p>Jones & DeMille Engineering, Inc. CIVIL & STRUCTURAL ENGINEERING - SURVEYING GIS - ENVIRONMENTAL - MATERIALS TESTING 1.800.748.5275 www.jonesanddemic.com</p>			
SAN JUAN COUNTY		OVERALL SITE PLANE	
PACK CREEK FIRE HMGP		SUBMITTAL: REVIEW - NOT FOR CONSTRUCTION	
SHEET NO. C-200		SAN JUAN COUNTY	

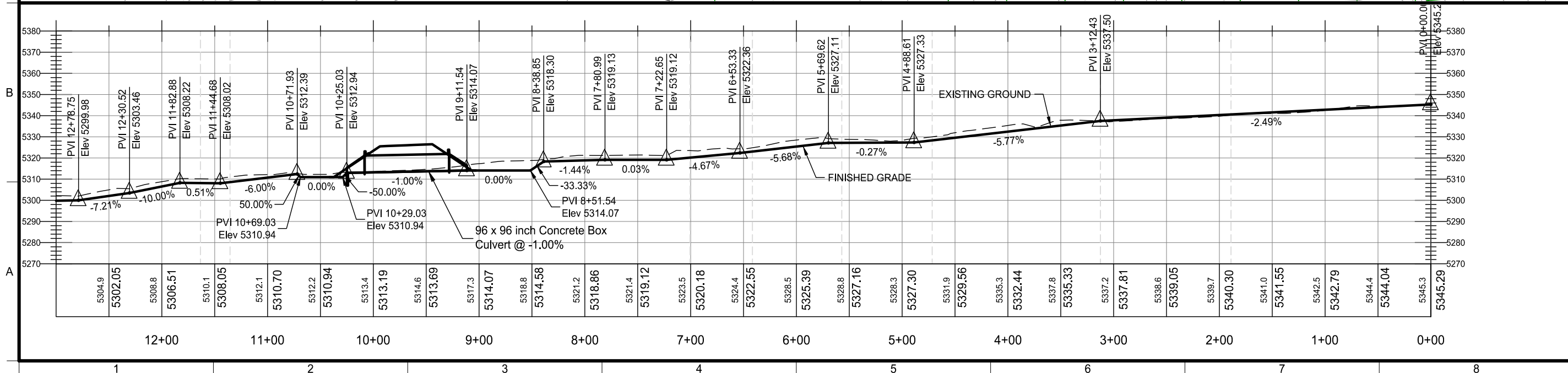
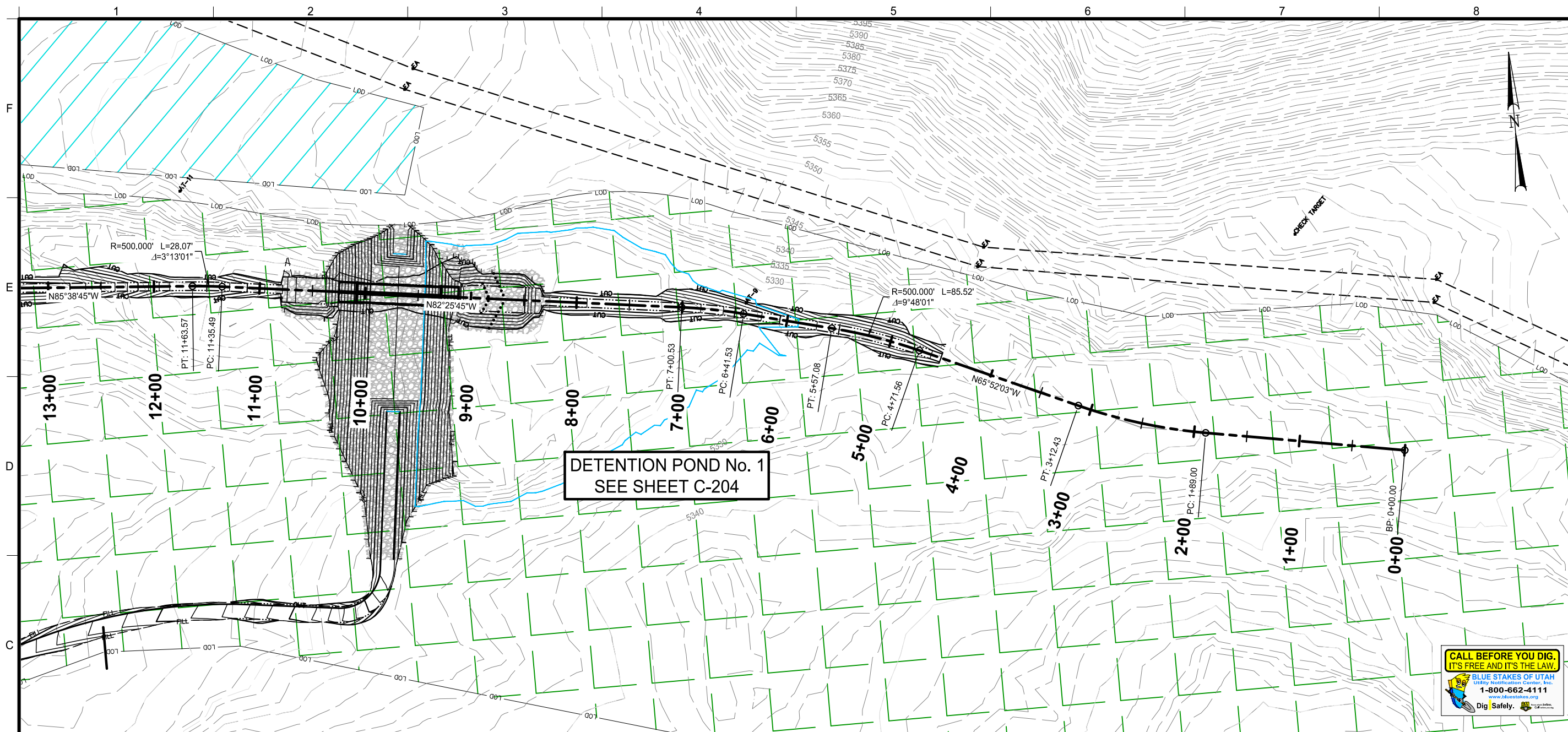




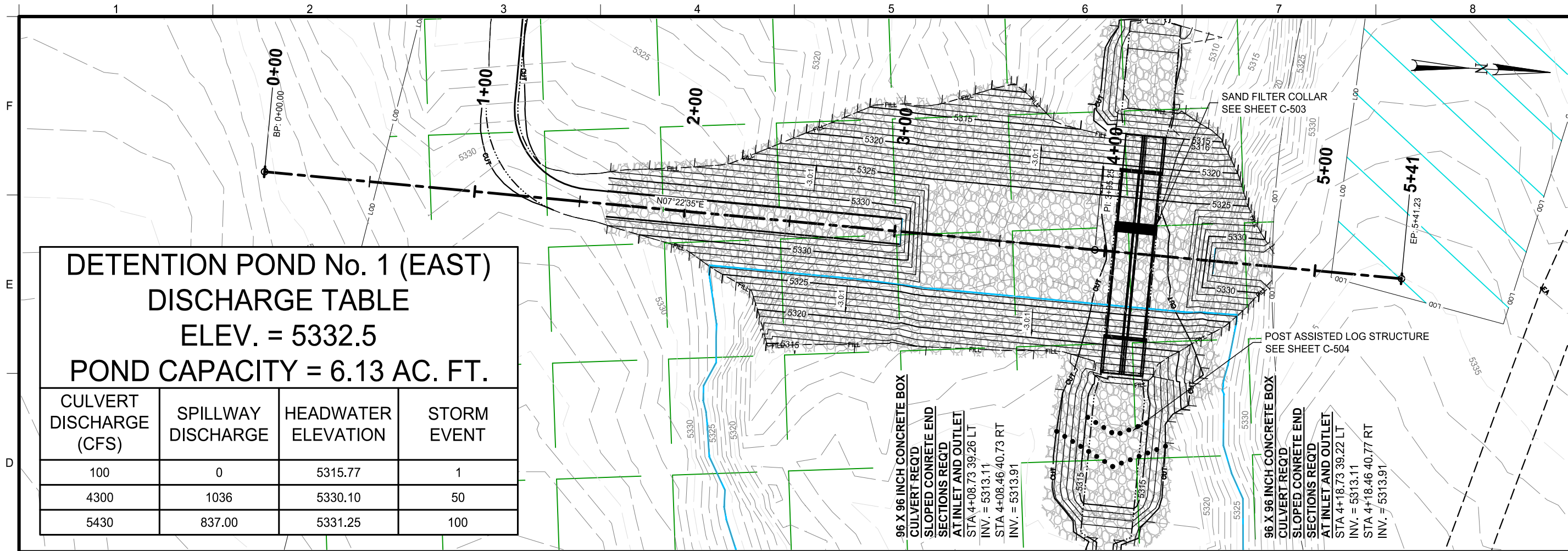
DETENTION POND No. 2
SEE SHEET C-203



REVISIONS		DWG NAME:	H:\JDI\Proj\2111-005\dwg\Construction Plans\Channel Plan Sheets.dwg	UPDATED:	5/24/2024
NO.	DATE	SCALE:	1" = 100'	PLOTTED:	5/24/2024
<p>Jones & DeMille Engineering, Inc. CIVIL & STRUCTURAL ENGINEERING - SURVEYING GIS - ENVIRONMENTAL - MATERIALS TESTING 1.800.748.5275 www.jonesanddemic.com</p>					
<p>SAN JUAN COUNTY PACK CREEK FIRE HMGP</p>			<p>PROJECT NUMBER: 2111-005</p>		
<p>CHANNEL IMPROVEMENTS PLAN AND PROFILE</p>			<p>SUBMITTAL: REVIEW - NOT FOR CONSTRUCTION</p>		
<p>SAN JUAN COUNTY</p>			<p>SHEET NO. C-201</p>		



REVISIONS		DWG NAME: H:\JDI\Proj\2111-005\dwg\Construction Plans\Channel Plan Sheets.dwg	UPDATED: 5/24/2024
NO.	DATE	REMARKS	PLOTTED: 5/24/2024
SCALE: 1" = 100'			
Jones & DeMille Engineering, Inc. CIVIL & STRUCTURAL ENGINEERING - SURVEYING GIS - ENVIRONMENTAL - MATERIALS TESTING 1800.748.5275 www.jonesanddemic.com			
SAN JUAN COUNTY		PROJECT NUMBER: 2111-005	
PACK CREEK FIRE HMGP		SUBMITTAL: REVIEW - NOT FOR CONSTRUCTION	
CHANNEL IMPROVEMENTS PLAN AND PROFILE		SHEET NO. C-202	

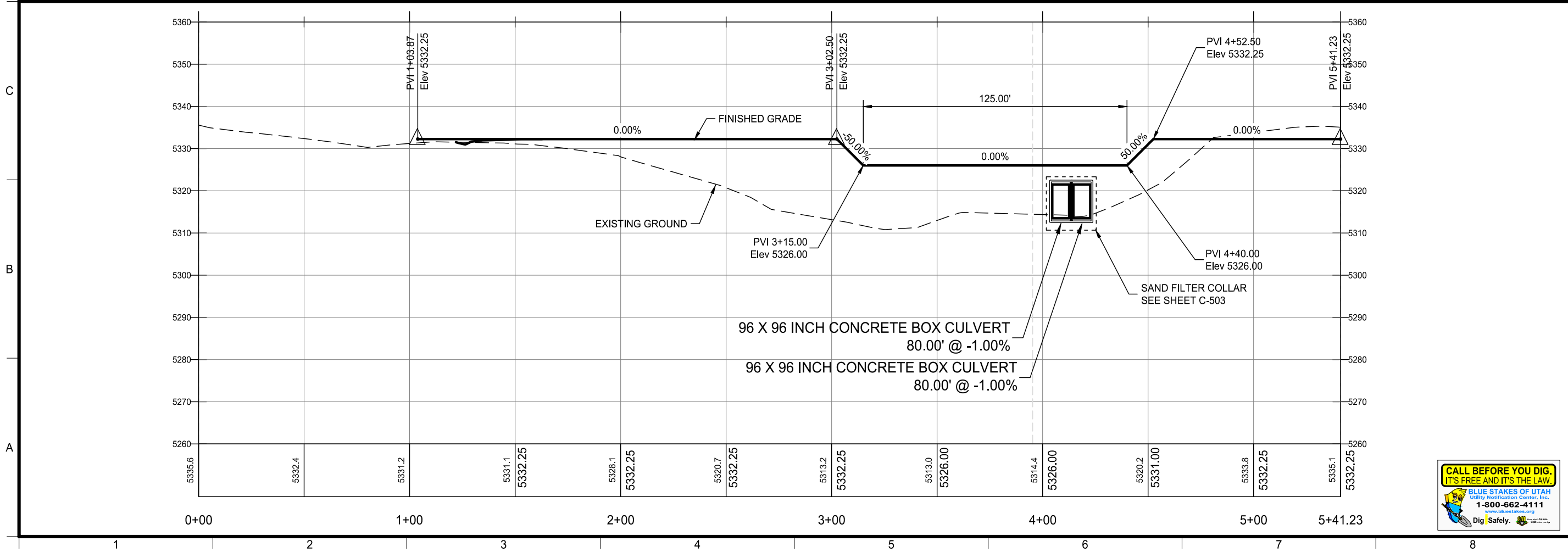


**DETENTION POND No. 1 (EAST)
DISCHARGE TABLE
ELEV. = 5332.5
POND CAPACITY = 6.13 AC. FT.**

CULVERT DISCHARGE (CFS)	SPILLWAY DISCHARGE	HEADWATER ELEVATION	STORM EVENT
100	0	5315.77	1
4300	1036	5330.10	50
5430	837.00	5331.25	100

96 X 96 INCH CONCRETE BOX
CULVERT REQ'D
SLOPED CONCRETE END
SECTIONS REQ'D
AT INLET AND OUTLET
STA 4+08.73 39.26 LT
INV. = 5313.11
STA 4+08.46 40.73 RT
INV. = 5313.91

96 X 96 INCH CONCRETE BOX
CULVERT REQ'D
SLOPED CONCRETE END
SECTIONS REQ'D
AT INLET AND OUTLET
STA 4+18.73 39.22 LT
INV. = 5313.11
STA 4+18.46 40.77 RT
INV. = 5313.91



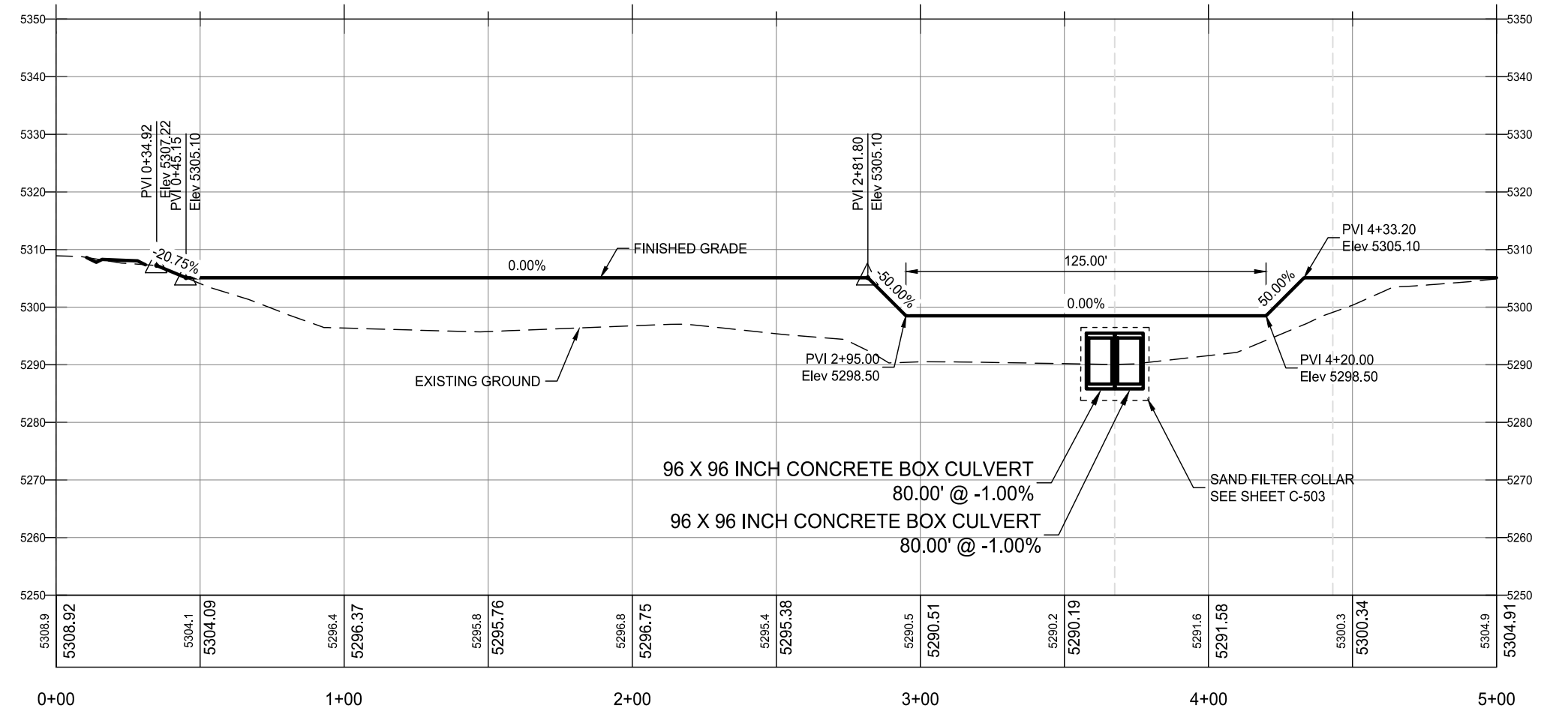
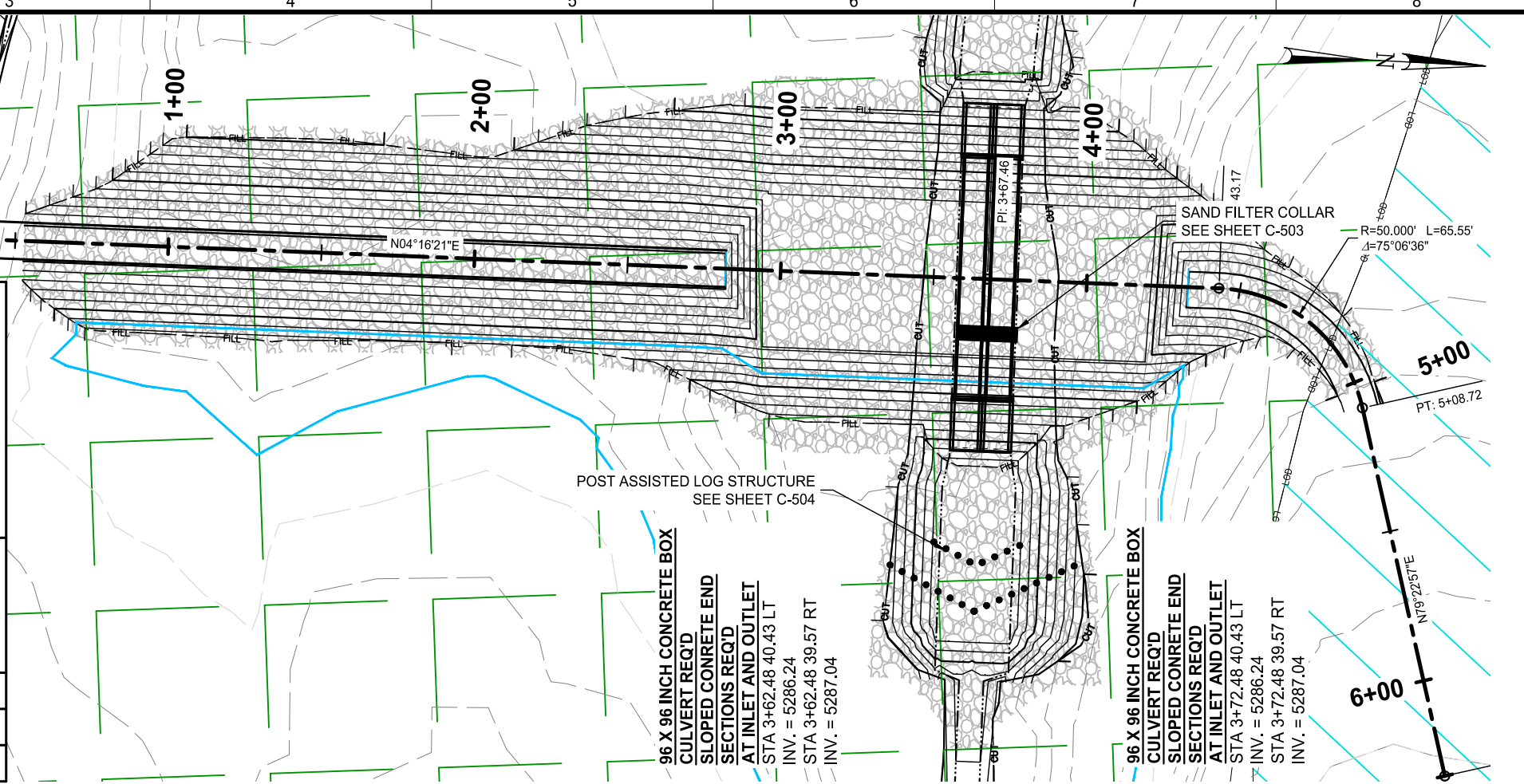
96 X 96 INCH CONCRETE BOX CULVERT
80.00' @ -1.00%
96 X 96 INCH CONCRETE BOX CULVERT
80.00' @ -1.00%



REVISIONS		DWG NAME: H:\JDI\Proj\2111-005\dwg\Construction Plans\Wier No.1 Plan Sheet.dwg	UPDATED: 5/24/2024
NO.	DATE	REMARKS	PLOTTED: 5/24/2024
SCALE: 1" = 50'		PROJECT NUMBER: 2111-005	
SAN JUAN COUNTY		SUBMITTAL: REVIEW - NOT FOR CONSTRUCTION	
PACK CREEK FIRE HMGP		SHEET NO. C-204	
DETENTION POND NO. 1 PLAN AND PROFILE		SAN JUAN COUNTY	

**DETENTION POND No. 2 (WEST)
DISCHARGE TABLE
ELEV. = 5305.1
POND CAPACITY 2.88 AC. FT.**

CULVERT DISCHARGE (CFS)	SPILLWAY DISCHARGE	HEADWATER ELEVATION	STORM EVENT
100	0	5288.95	1
4300	829	5302.90	50
5430	672.40	5304.10	100



Jones & DeMille Engineering, Inc.
 CIVIL & STRUCTURAL ENGINEERING - SURVEYING
 GIS - ENVIRONMENTAL - MATERIALS TESTING
 1.800.748.5275 www.jonesanddemille.com

SAN JUAN COUNTY
PACK CREEK FIRE HMGP
DETENTION POND NO. 2 PLAN AND PROFILE

REVISIONS: [Table with columns for NO., DATE, and REVISIONS]

REMARKS: [Table with columns for NO., DATE, and REMARKS]

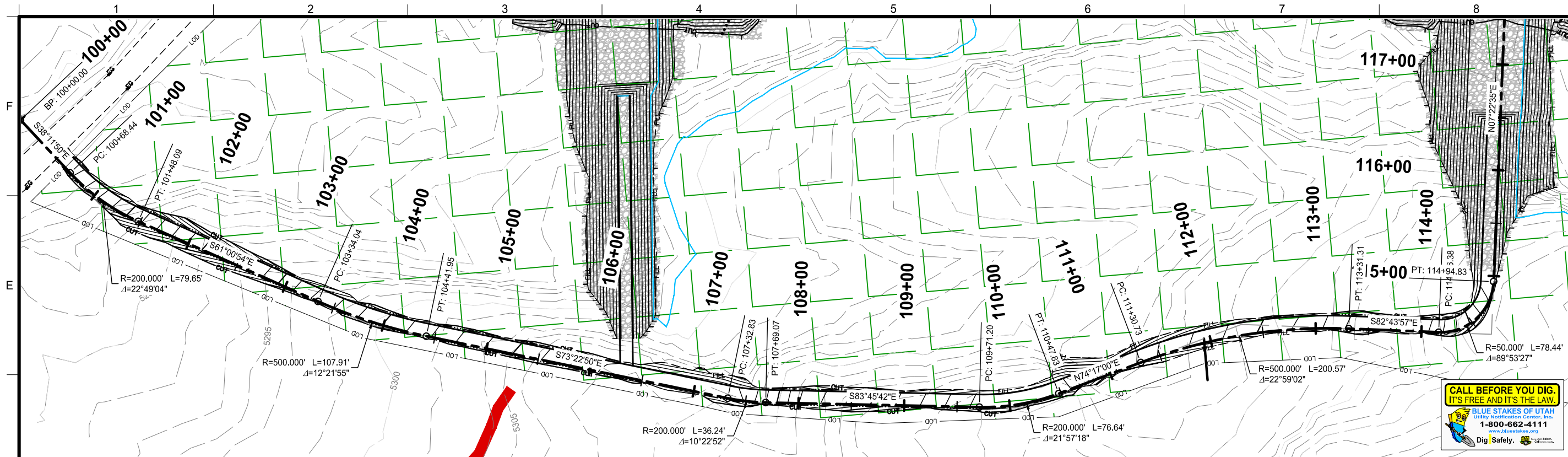
DWG NAME: H:\JDI\Proj\2111-005\dwg\Construction Plans\Wier No.2 Plan Sheet.dwg
 UPDATED: 5/24/2024
 PLOTTED: 5/24/2024

SCALE: 1" = 50'

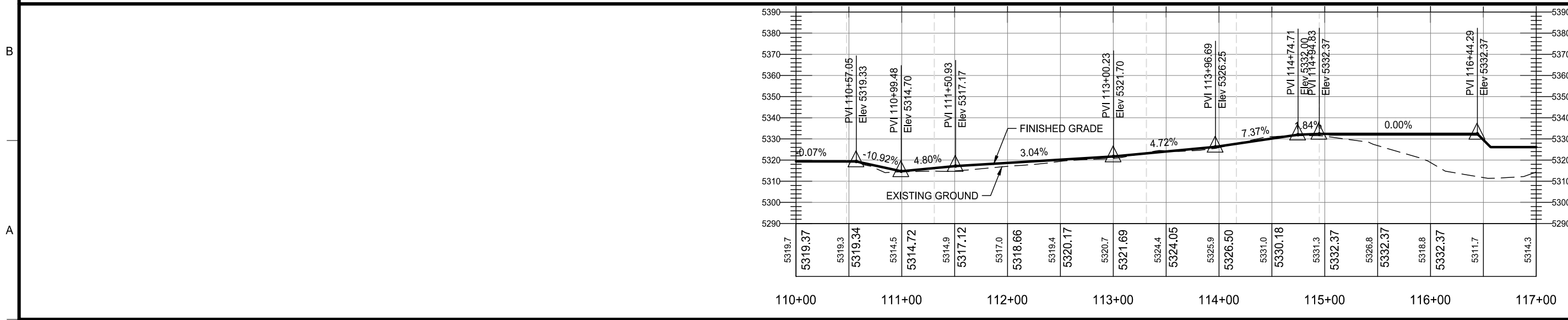
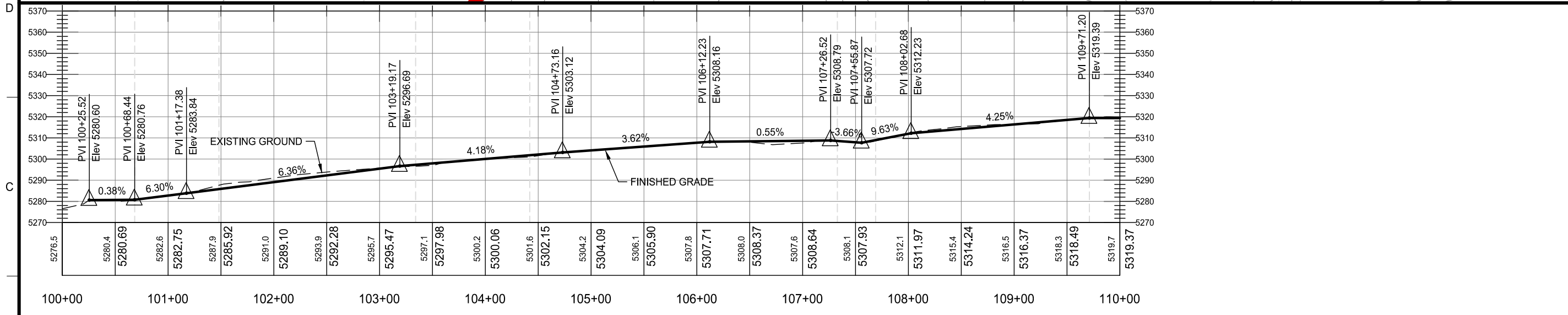
SUBMITTAL: REVIEW - NOT FOR CONSTRUCTION PROJECT NUMBER: 2111-005

SAN JUAN COUNTY
 SHEET NO. C-203





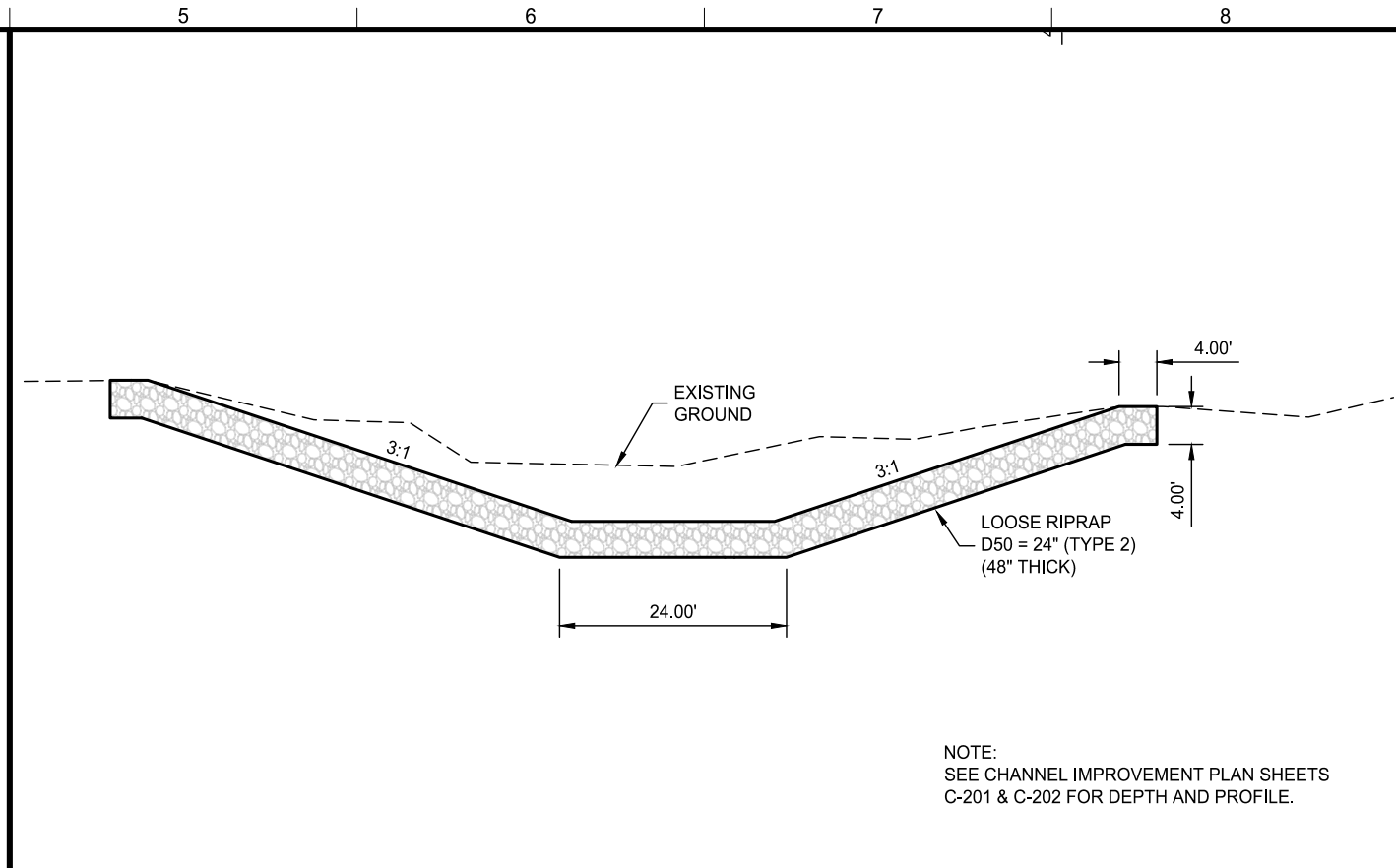
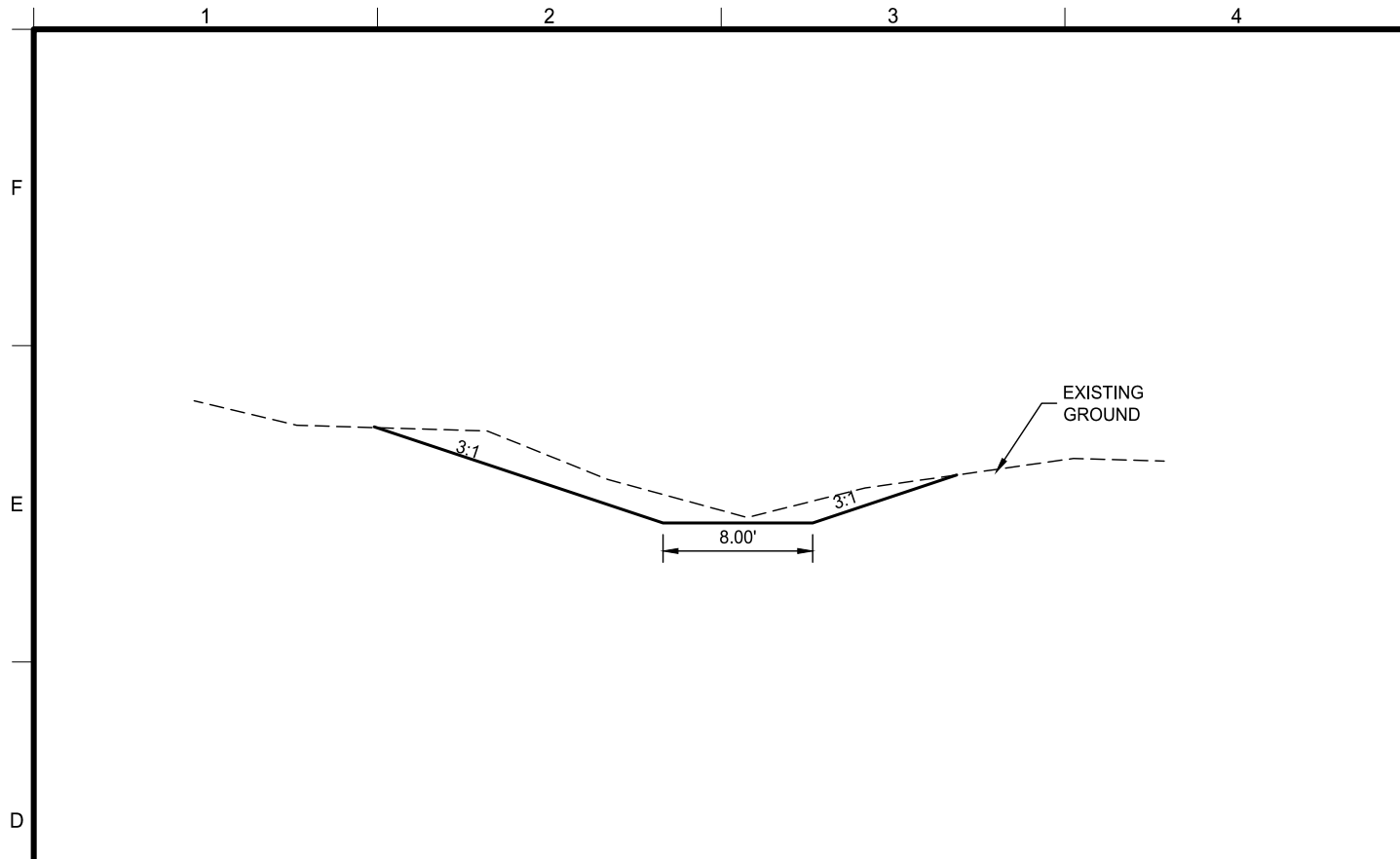
**CALL BEFORE YOU DIG!
IT'S FREE AND IT'S THE LAW!**
BLUE STAKES OF UTAH
Utility Notification Center, Inc.
1-800-662-4111
www.stakes.org
Dig Safely.



REVISIONS	NO.	DATE	REMARKS

Jones & DeMille Engineering, Inc.
CIVIL & STRUCTURAL ENGINEERING - SURVEYING
GIS - ENVIRONMENTAL - MATERIALS TESTING
1.800.748.5275 www.jonesanddemic.com

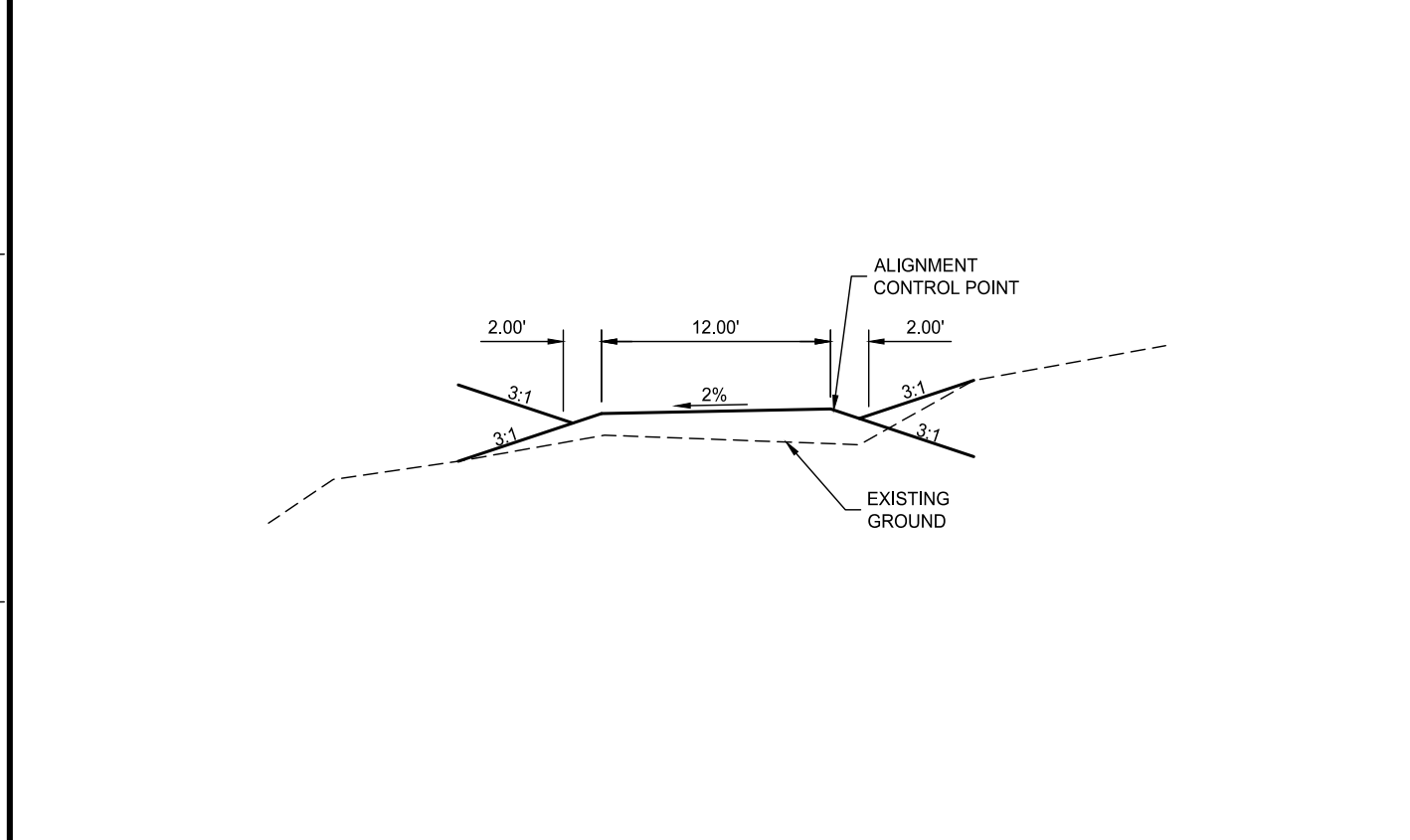
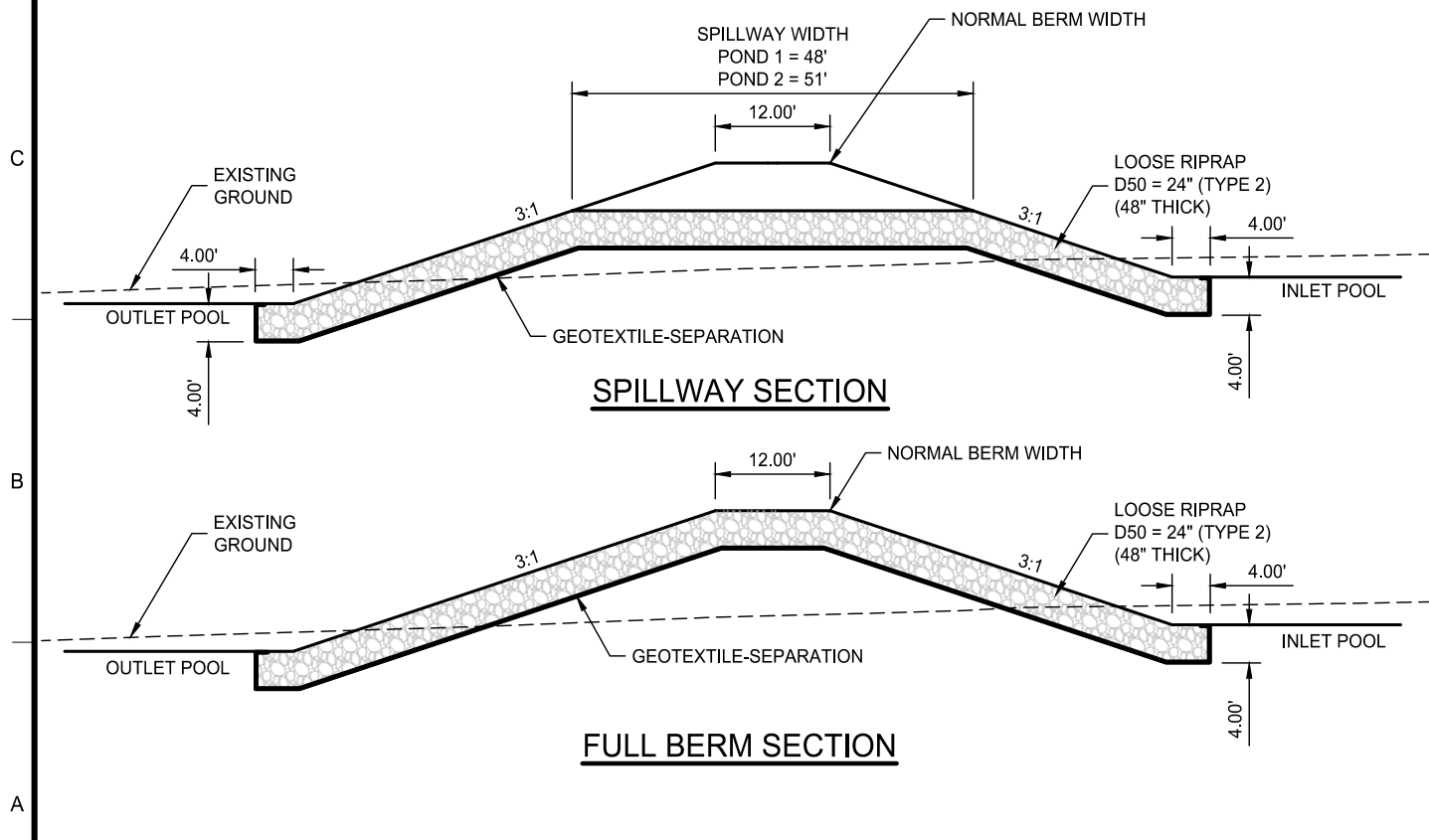
SAN JUAN COUNTY
PACK CREEK FIRE HMGP
ACCESS ROAD PLAN AND PROFILE
SUBMITTAL: REVIEW - NOT FOR CONSTRUCTION
PROJECT NUMBER: 2111-005
SHEET NO. C-205



NOTE:
SEE CHANNEL IMPROVEMENT PLAN SHEETS
C-201 & C-202 FOR DEPTH AND PROFILE.

D1 CHANNEL IMPROVEMENTS SECTION
SCALE 1" = 10'

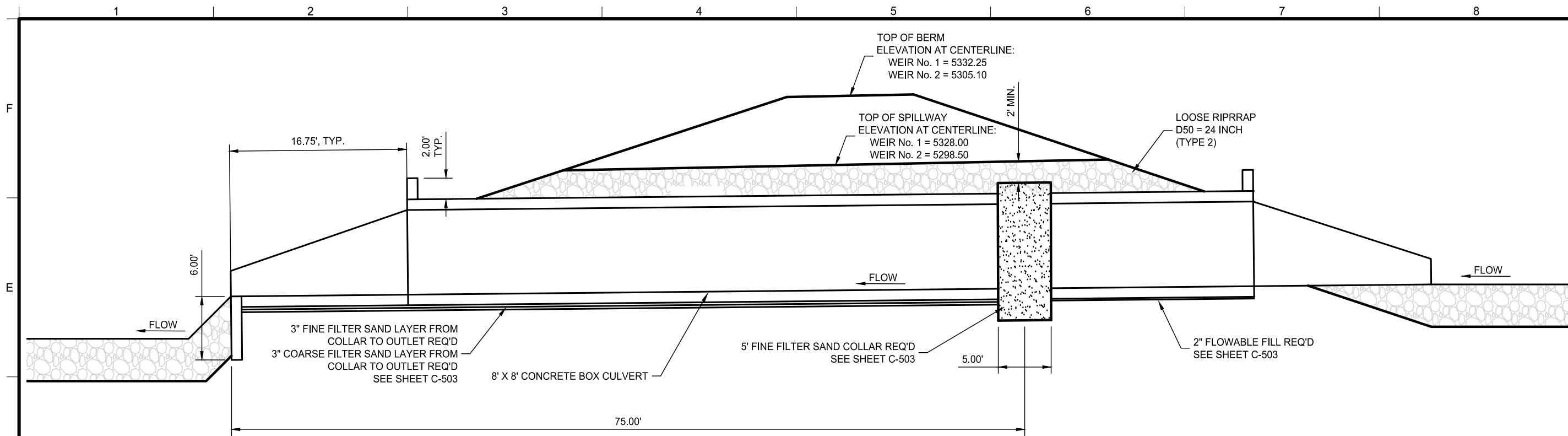
D5 CHANNEL INLET / OUTLET POOL SECTION
SCALE 1" = 20'



A1 POND DETENTION BERM SECTION
SCALE 1" = 20'

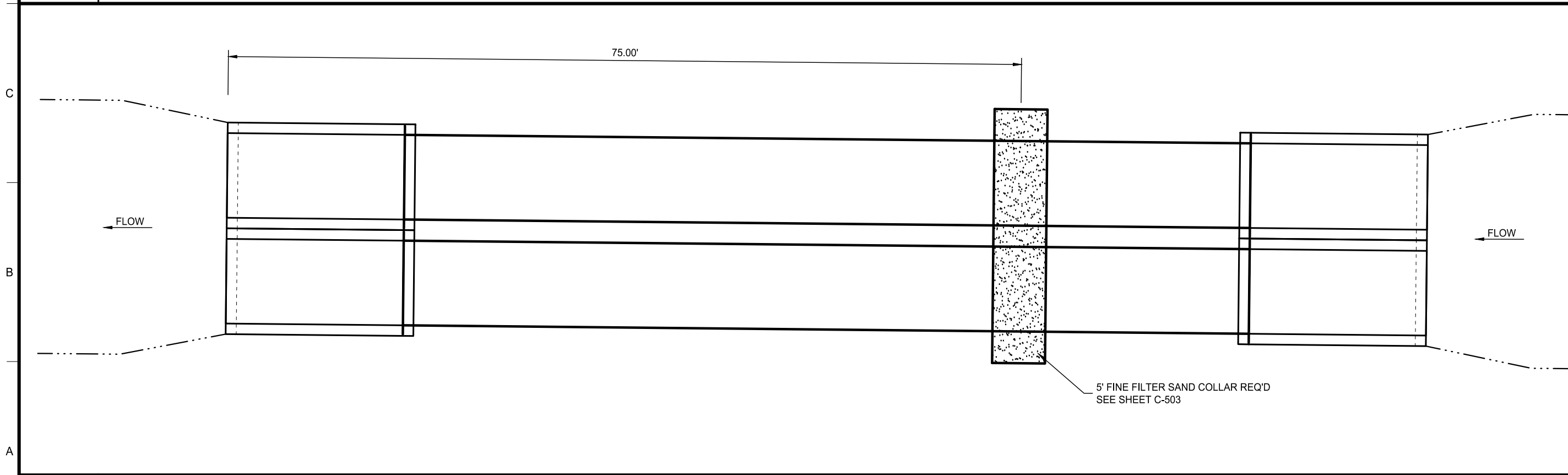
A5 ACCESS ROAD SECTION
SCALE 1" = 10'

REVISIONS	DWG NAME: H:\JDP\Proj\2111-005.dwg\Construction Plans\Details_2111-005.dwg	UPDATED: 5/23/2024
NO.	DATE	PLOTTED: 5/24/2024
SCALE: VARIES		
Jones & DeMille Engineering, Inc. CIVIL & STRUCTURAL ENGINEERING - SURVEYING GIS - ENVIRONMENTAL - MATERIALS TESTING 1,800.748.5275 www.jonesanddemic.com		
SAN JUAN COUNTY PACK CREEK FIRE HMGP		PROJECT NUMBER: 2111-005
DETAILS		SUBMITTAL: REVIEW - NOT FOR CONSTRUCTION
SAN JUAN COUNTY		SHEET NO. C-501



D1 TYPICAL BOX CULVERT SECTION

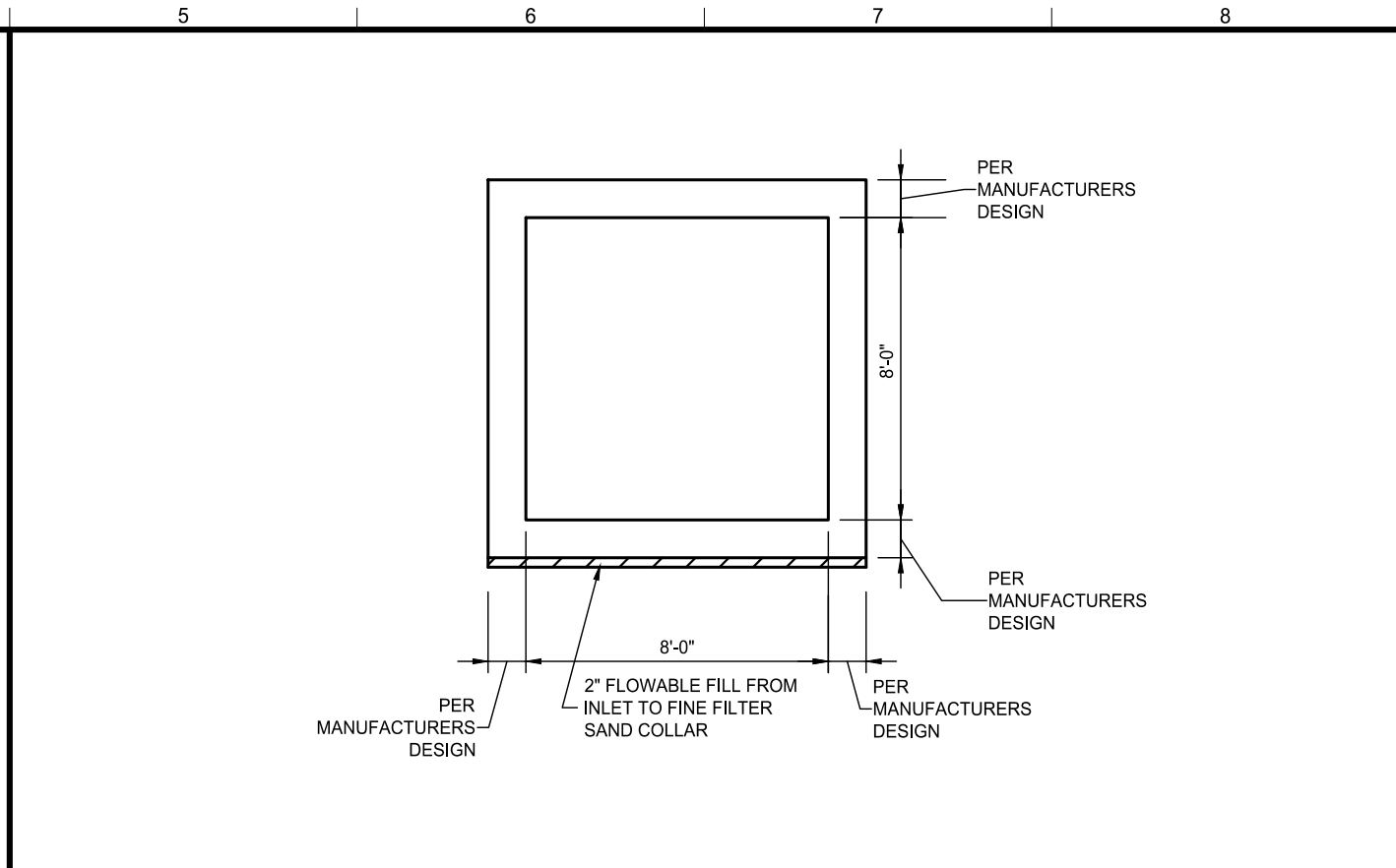
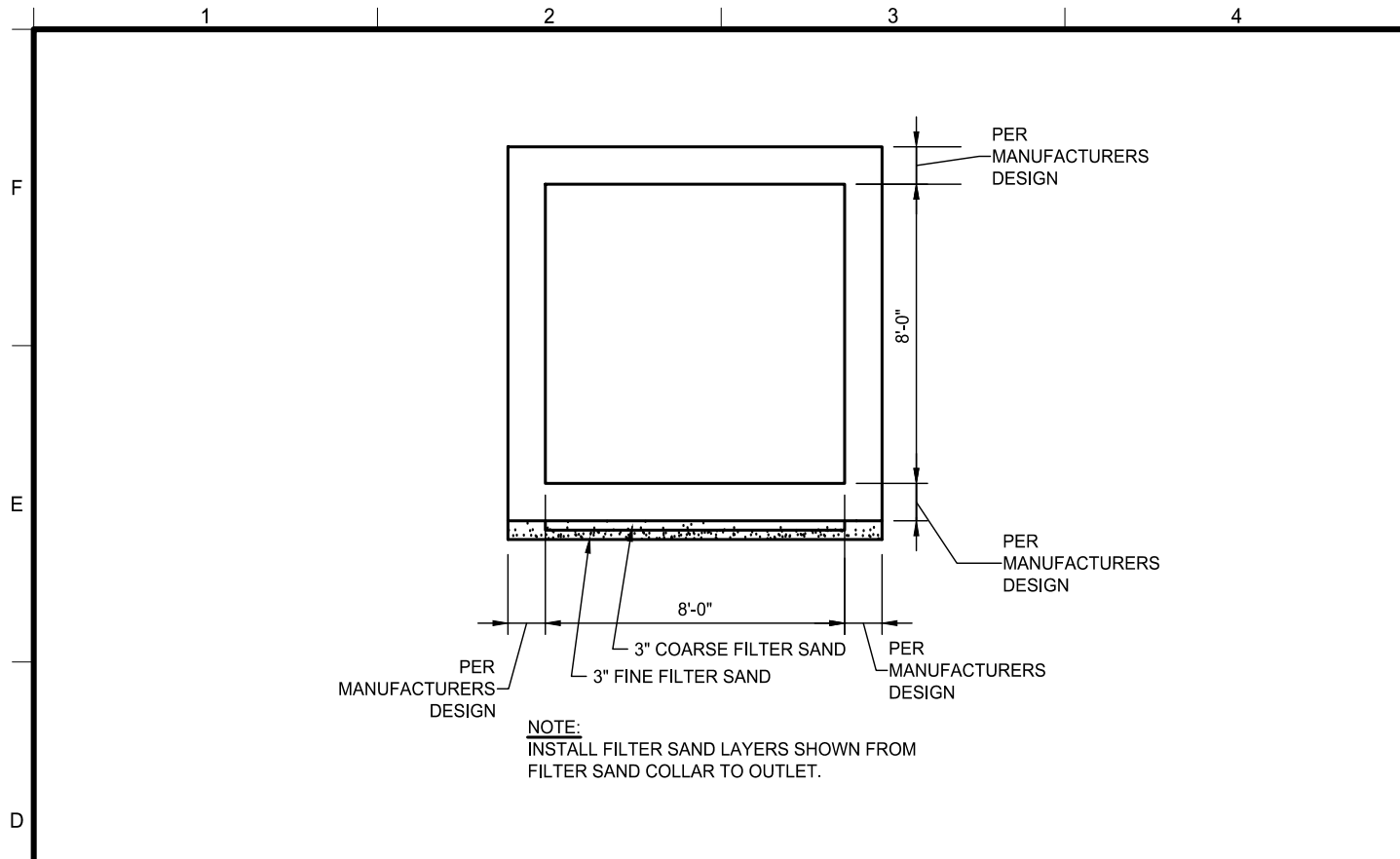
SCALE 1" = 10'



A1 TYPICAL BOX CULVERT PLAN

SCALE 1" = 10'

REVISIONS	DWG NAME: H:\JDI\Proj\2111-005.dwg	UPDATED: 5/23/2024
NO.	DATE	PLOTTED: 5/24/2024
REMARKS	SCALE: VARIES	
<p>Jones & DeMille Engineering, Inc. CIVIL & STRUCTURAL ENGINEERING - SURVEYING GIS - ENVIRONMENTAL - MATERIALS TESTING 1,800.748.5275 www.jonesanddemic.com</p>		
<p>SAN JUAN COUNTY PACK CREEK FIRE HMGP</p>		
<p>DETAILS</p>		
<p>PROJECT NUMBER: 2111-005</p>		<p>SUBMITTAL: REVIEW - NOT FOR CONSTRUCTION</p>
<p>SAN JUAN COUNTY</p>		
<p>SHEET NO. C-502</p>		

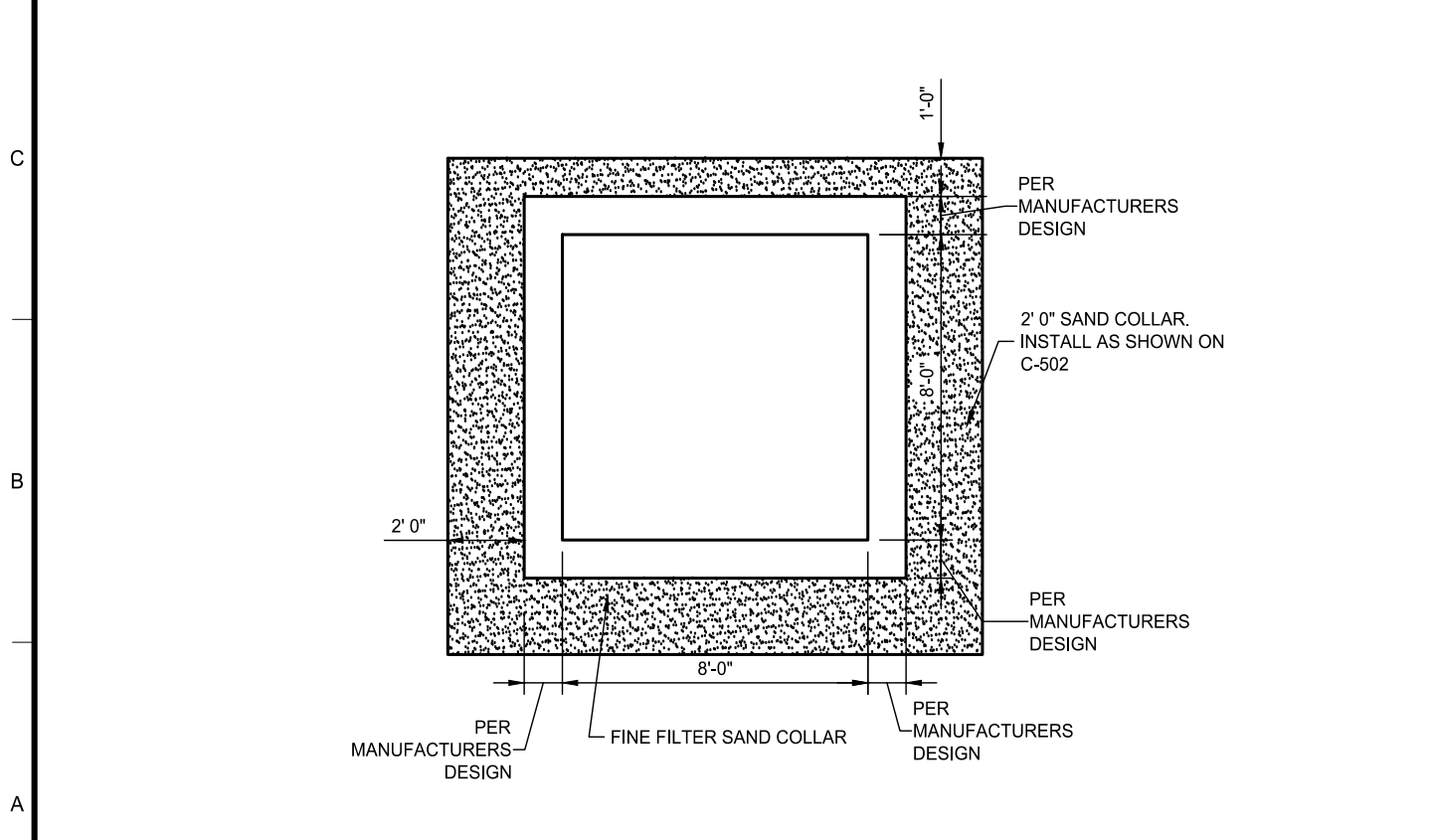


D1 FILTER SAND COLLAR TO OUTLET

SCALE 1" = 5'

D5 INLET TO FILTER SAND COLLAR

SCALE 1" = 20'



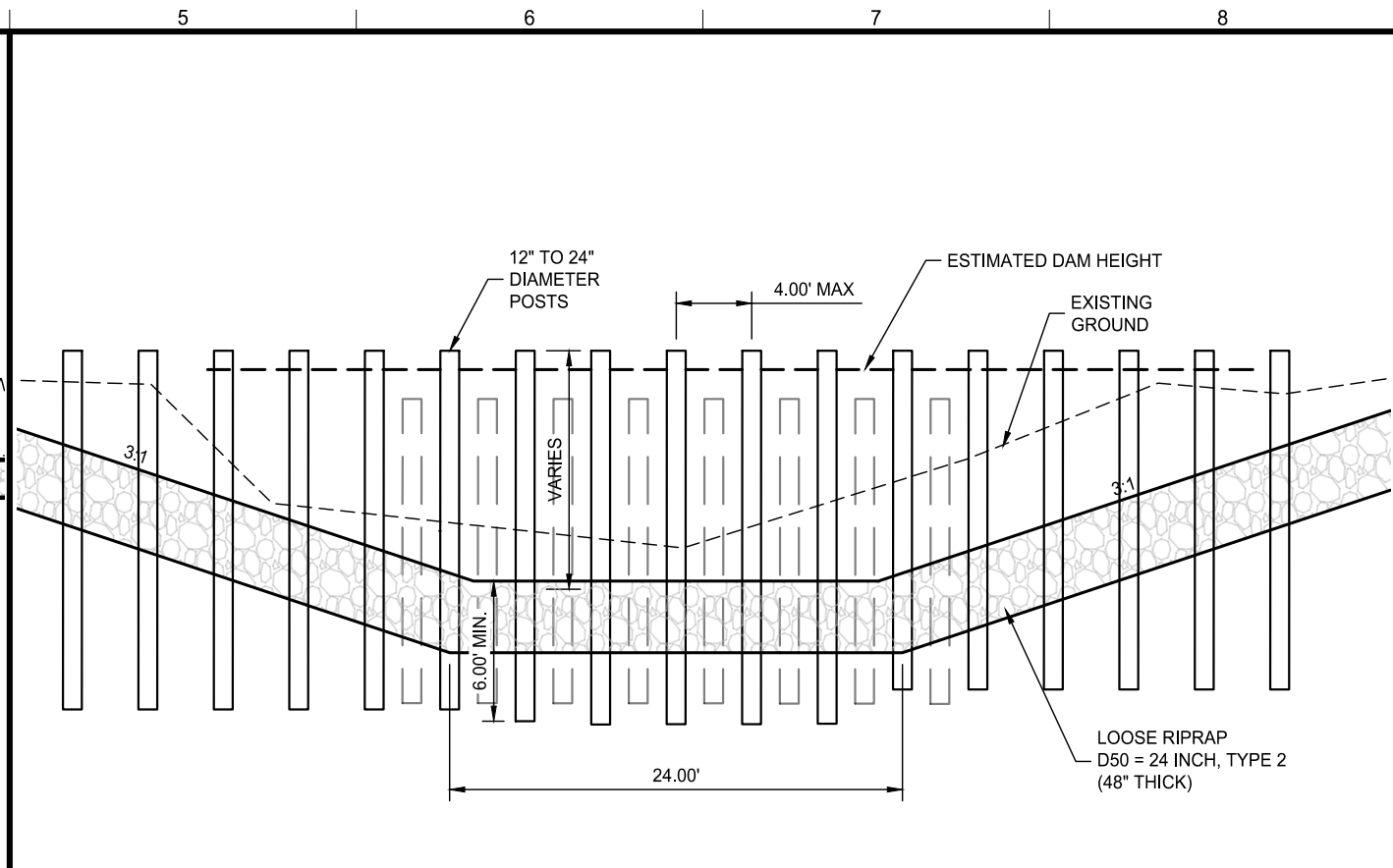
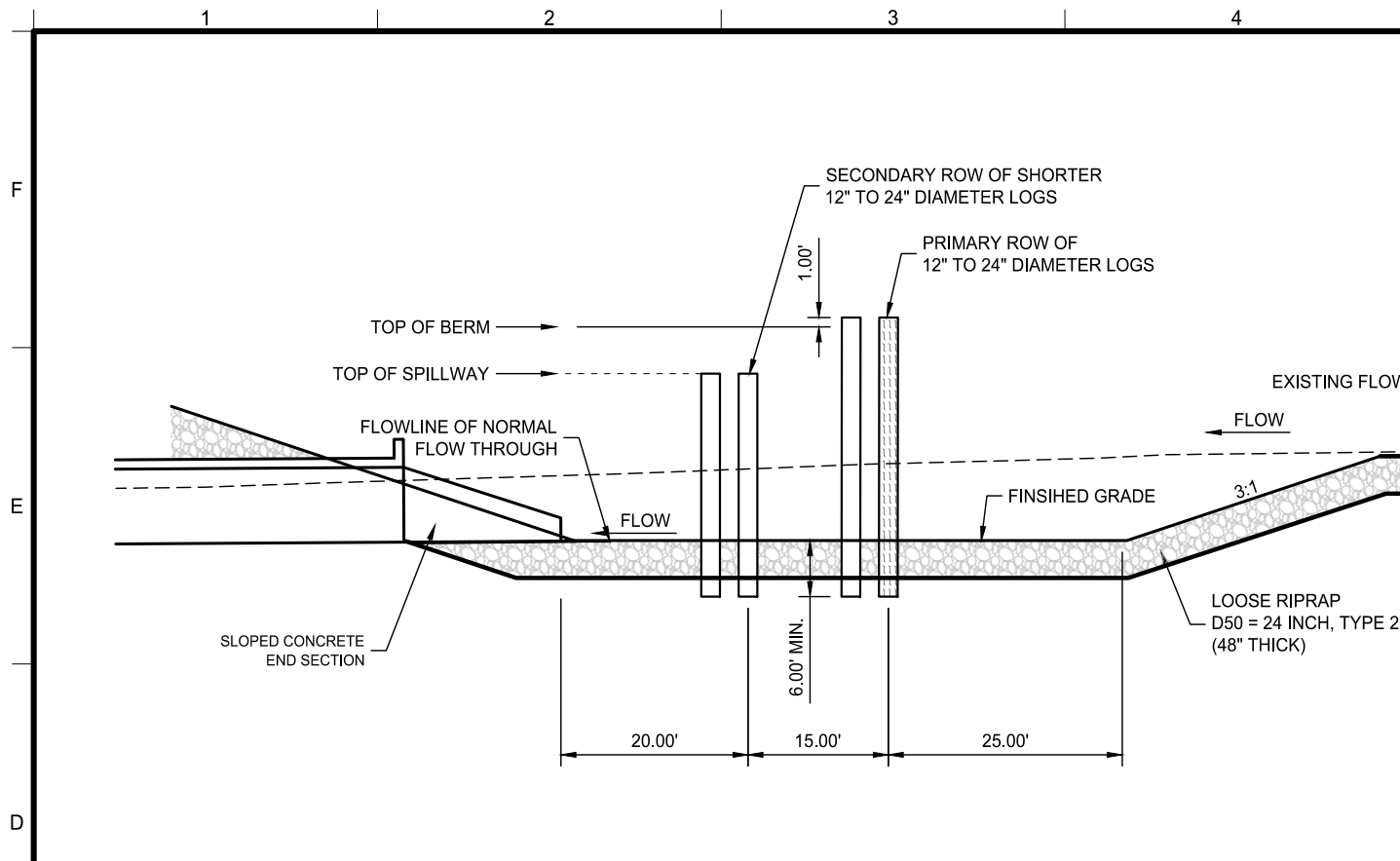
A1 FILTER SAND COLLAR

SCALE 1" = 5'

A5

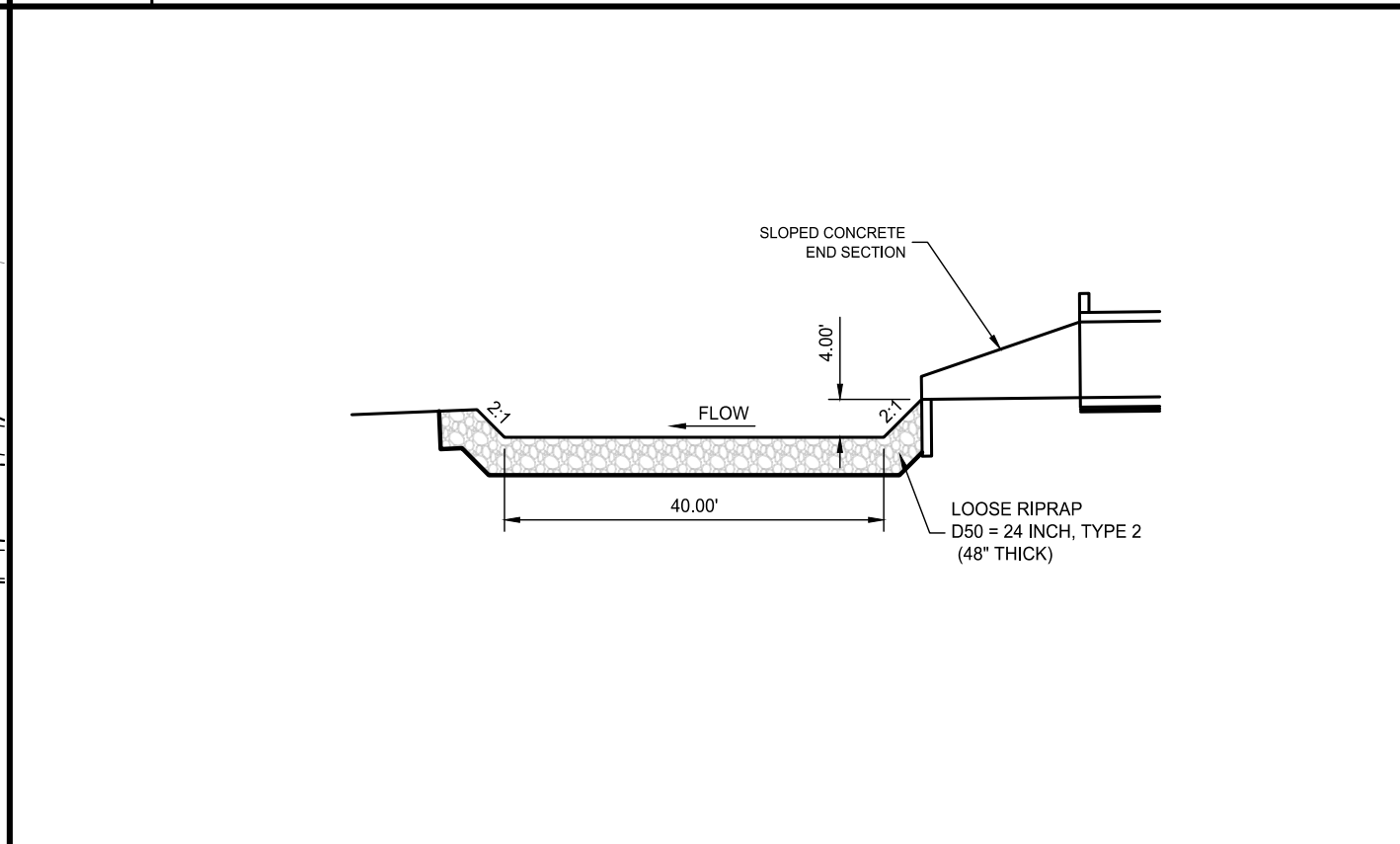
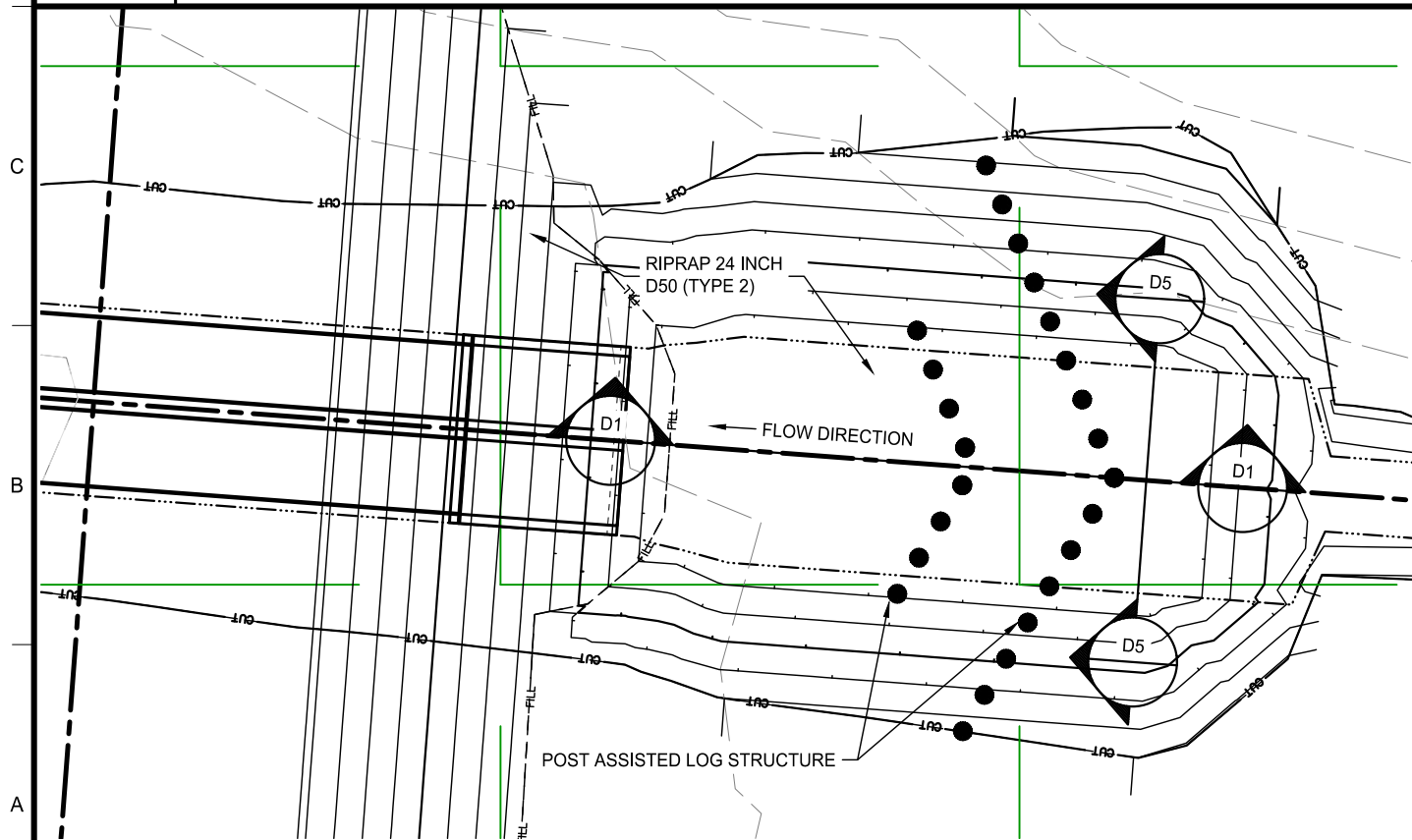
SCALE

REVISIONS		DWG NAME: H:\JDIProj\2111-005.dwg\Construction Plans\Details_2111-005.dwg	UPDATED: 5/23/2024
NO.	DATE	SCALE: VARIES	PLOTTED: 5/24/2024
<p>Jones & DeMille Engineering, Inc. CIVIL & STRUCTURAL ENGINEERING - SURVEYING GIS - ENVIRONMENTAL - MATERIALS TESTING 1,800.748.5275 www.jonesanddemic.com</p>			
SAN JUAN COUNTY		PROJECT NUMBER: 2111-005	
PACK CREEK FIRE HMGP		DETAILS	
SUBMITTAL: REVIEW - NOT FOR CONSTRUCTION			
SAN JUAN COUNTY			
SHEET NO. C-503			



D1 POST ASSISTED LOG STRUCTURE PARALLEL SECTION VIEW
SCALE 1" = 20'

D5 POST ASSISTED LOG STRUCTURE PERPENDICULAR SECTION VIEW
SCALE 1" = 10'



A1 PLAN VIEW (CONVEX PRIMARY DAM)
SCALE 1" = 20'

A5 OUTLET PLUNGE POOL
SCALE 1" = 20'

REVISIONS		DATE	NO.	SCALE: VARIES	DWG NAME: H:\JDP\Proj\2111-005.dwg	UPDATED: 5/23/2024	PLOTTED: 5/24/2024
REMARKS					Construction Plans/Details_2111-005.dwg		
<p>Jones & DeMille Engineering, Inc. CIVIL & STRUCTURAL ENGINEERING - SURVEYING GIS - ENVIRONMENTAL - MATERIALS TESTING 1.800.748.5275 www.jonesanddemille.com</p>		<p>SAN JUAN COUNTY PACK CREEK FIRE HMGP</p>		<p>DETAILS PROJECT NUMBER: 2111-005</p>		<p>SAN JUAN COUNTY</p>	
SUBMITTAL: REVIEW - NOT FOR CONSTRUCTION						SHEET NO. C-504	