

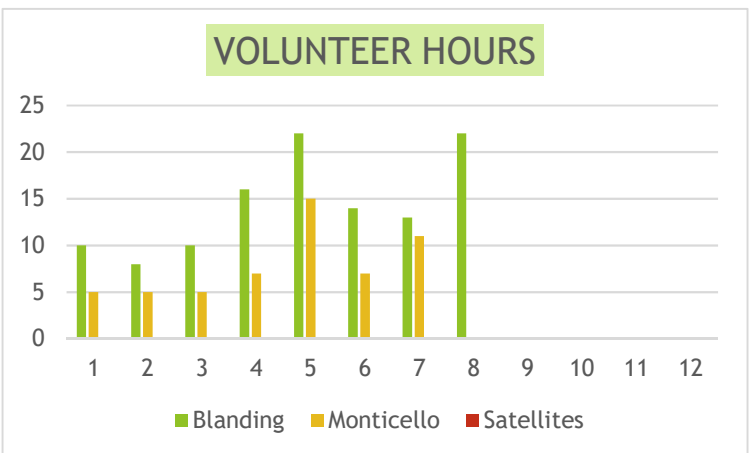
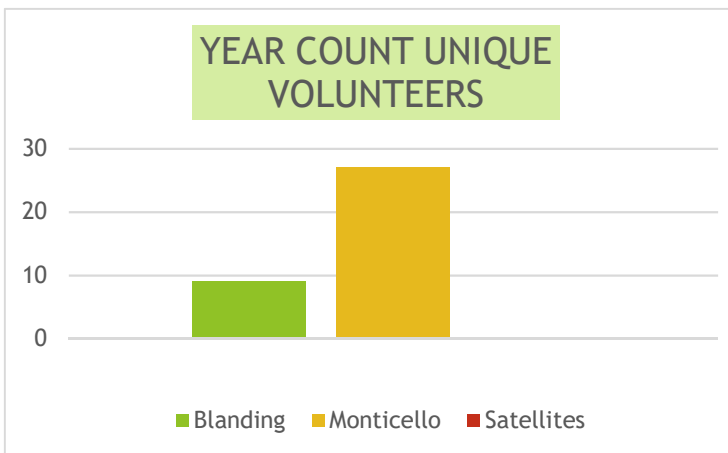
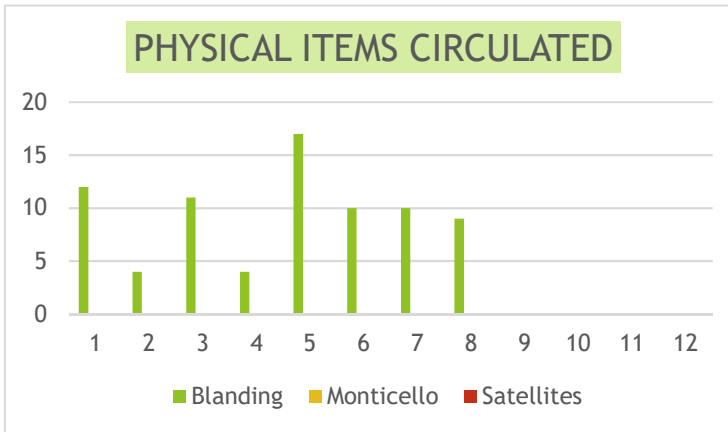
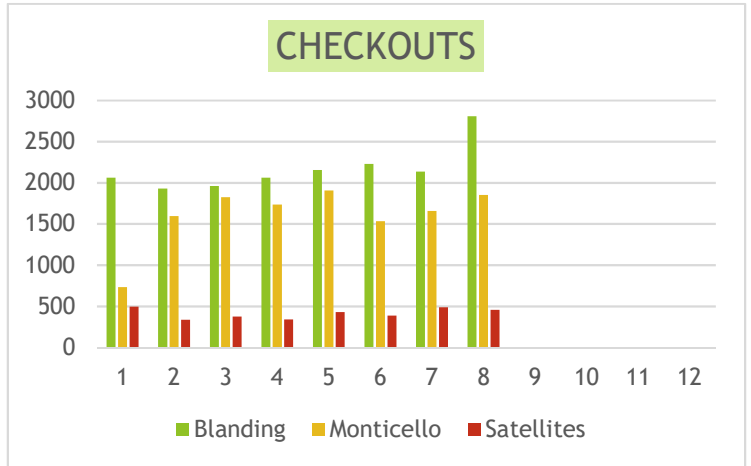
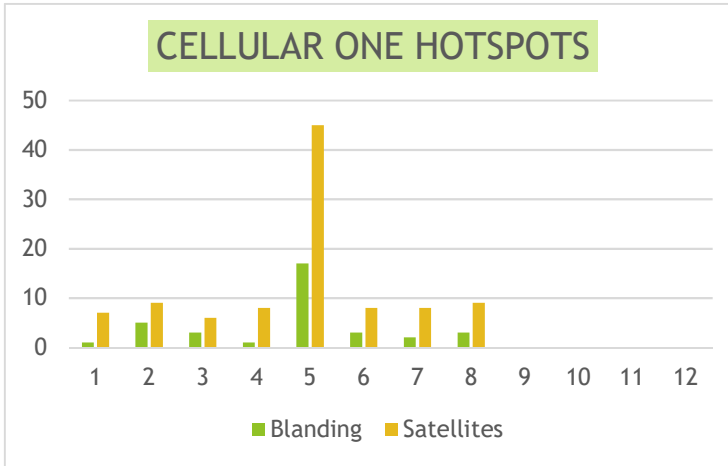
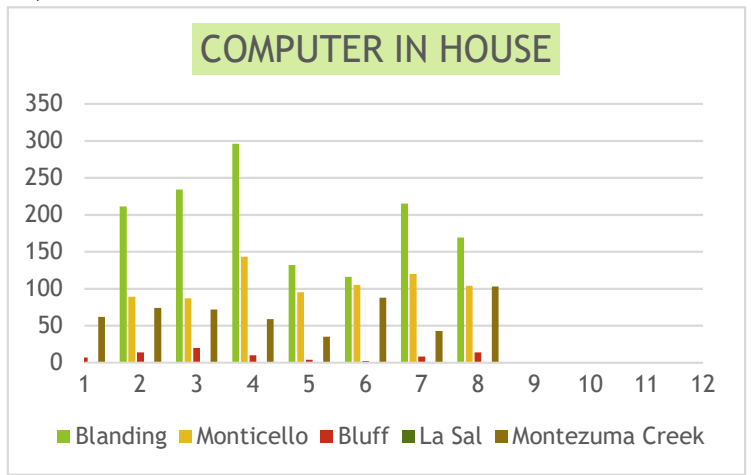
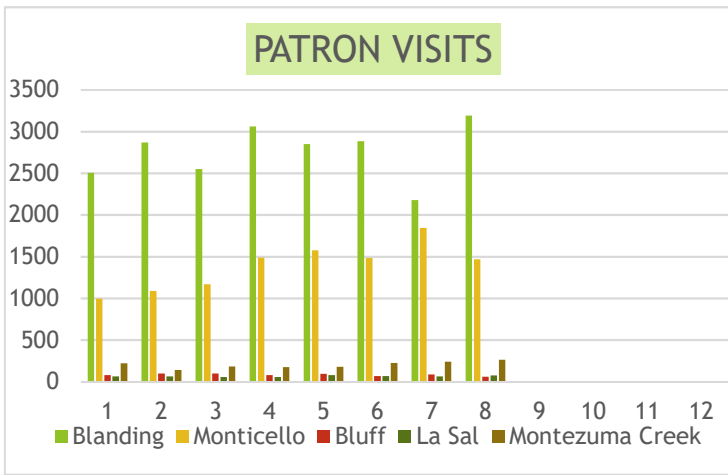
SAN JUAN COUNTY STATISTICS | 1A

October 10, 2024

	1 JAN	2 FEB	3 MAR	4 APR	5 MAY	6 JUN	7 JUL	8 AUG	9 SEP	10 OCT	11 NOV	12 DEC	Total
PATRON VISITS													
Blanding	2505	2869	2549	3060	2850	2883	2177	3191					22,084
Monticello	996	1087	1167	1486	1577	1484	1845	1469					11,111
Bluff	77	98	97	79	92	66	84	57					650
La Sal	62	64	53	53	76	67	63	73					511
Montezuma Creek	219	140	183	172	179	222	238	264					1,617
Total	3859	4258	4049	4850	4774	4722	4407	5054					35,973
COMPUTER IN HOUSE													
Blanding	196	211	234	296	132	116	215	169					1,569
Monticello	68	89	87	143	95	105	120	104					811
Bluff	7	14	20	10	4	2	8	14					79
La Sal													
Montezuma Creek	62	74	72	59	35	88	43	103					536
Total	333	388	413	508	266	311	386	390					2,995
CELLULAR ONE HOTSPOTS													
Blanding	1	5	3	1	17	3	2	3					35
Satellites	7	9	6	8	45	8	8	9					100
Total	8	14	9	9	62	11	10	12					135
CHECKOUTS													
Blanding	2061	1929	1959	2061	2155	2228	2137	2810					17,340
Monticello	733	1594	1824	1736	1906	1532	1659	1853					12,837
Satellites	493	334	374	339	429	387	488	454					3,298
Total	3287	3857	4157	4136	4490	4147	4284	5117					33,475
PHYSICAL ITEMS CIRCULATED													
Blanding	12	4	11	4	17	10	10	9					77
Monticello													
Satellites													
Total	12	4	11	4	17	10	10	9					77
FOOD BANK MEALS SERVED													
Blanding	128	77	61	92	16	NA	NA	NA					374
Total	128	77	61	92	16								374
YEAR COUNT UNIQUE VOLUNTEERS													
Blanding													9
Monticello													27
Satellites													
Total													36
VOLUNTEER HOURS													
Blanding	10	8	10	16	22	14	13	22					115
Monticello	5	5	5	7	15	7	11						55
Satellites													
Total	15	13	15	23	37	21	24	22					170

SAN JUAN COUNTY STATISTICS | 1A

October 10, 2024



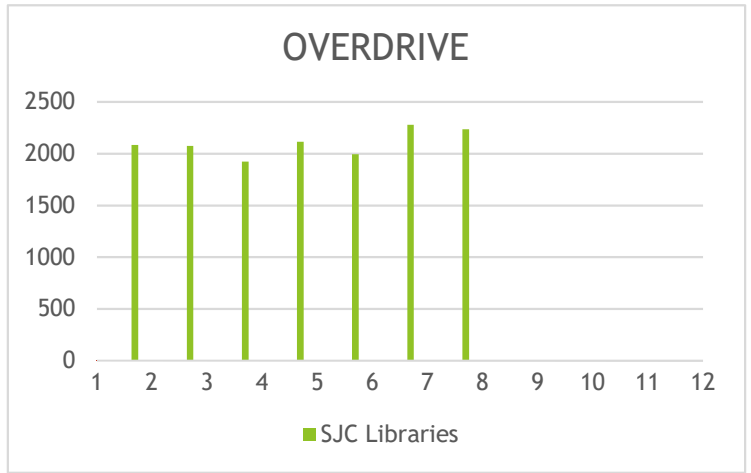
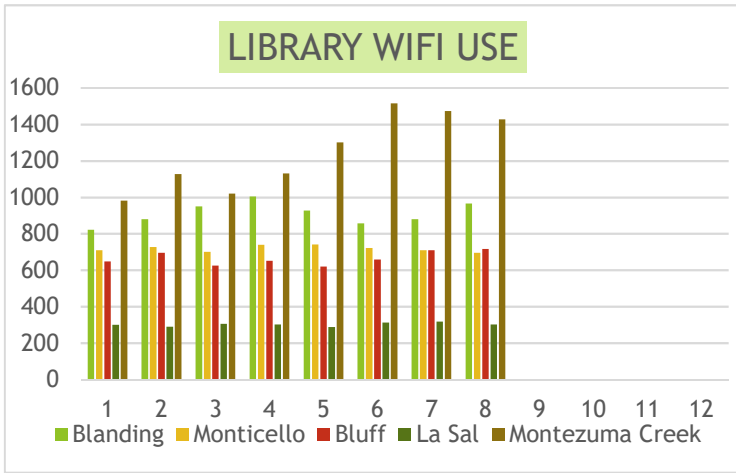
SAN JUAN COUNTY STATISTICS | 1B

October 10, 2024

	1 JAN	2 FEB	3 MAR	4 APR	5 MAY	6 JUN	7 JUL	8 AUG	9 SEP	10 OCT	11 NOV	12 DEC	Total
LIBRARY WIFI USE													
Blanding	822	880	950	1005	927	857	879	966					7,286
Monticello	709	727	701	739	741	721	709	695					5,742
Bluff	649	695	625	651	620	659	709	717					5,325
La Sal	301	290	306	303	289	313	319	303					2,424
Montezuma Creek	982	1128	1021	1131	1301	1516	1473	1427					9,979
Total	3463	3720	3603	3829	3878	4066	4089	4108					30,756
OVERDRIVE													
SJC Libraries	2158	2083	2074	1921	2115	1994	2278	2234					16,857
Total	2158	2083	2074	1921	2115	1994	2278	2234					16,857

SAN JUAN COUNTY STATISTICS | 1B

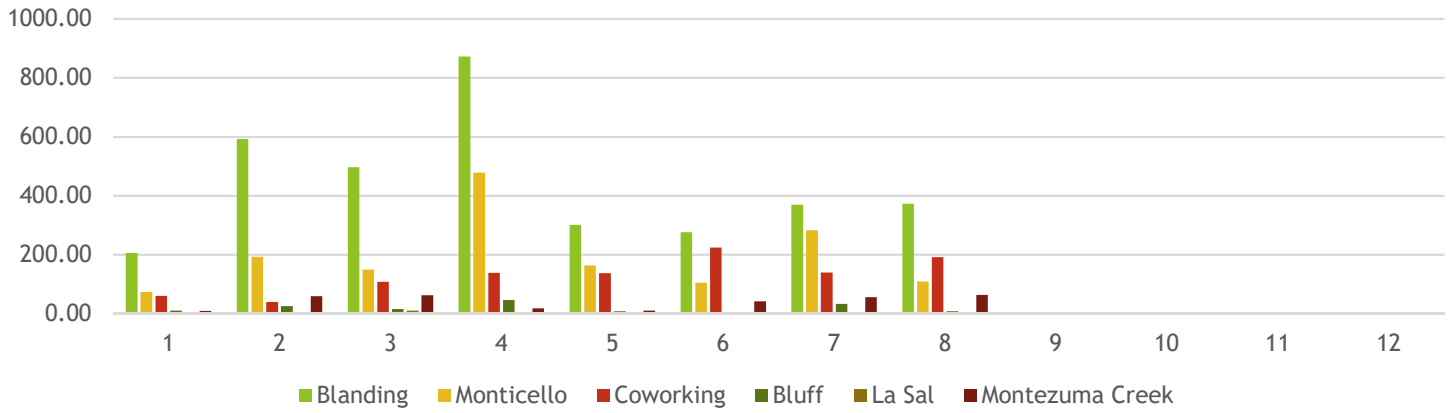
October 10, 2024



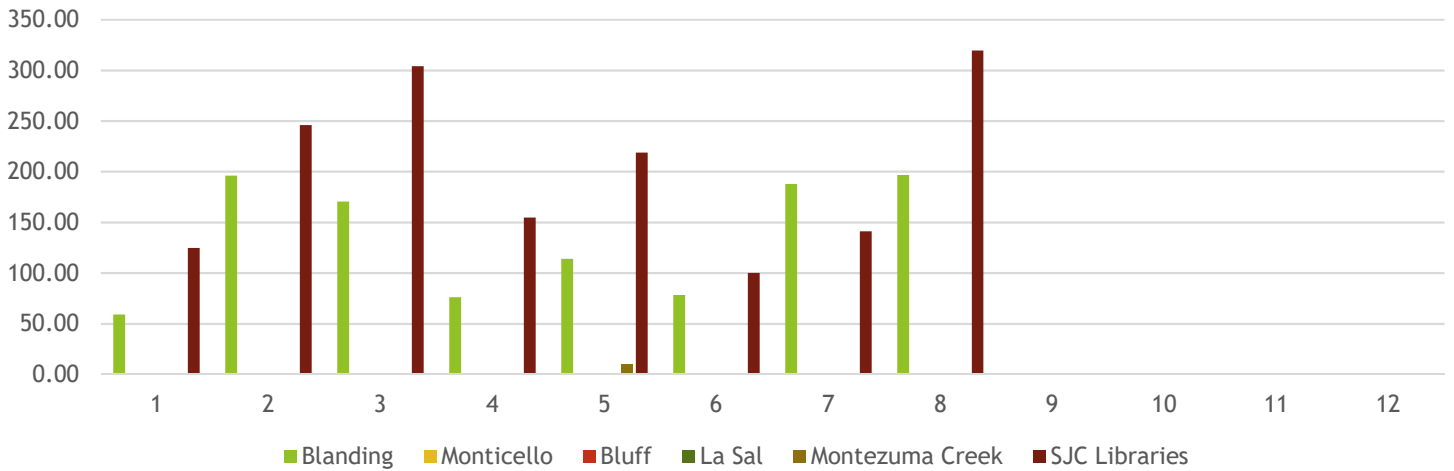
SAN JUAN COUNTY STATISTICS | 2

October 10, 2024

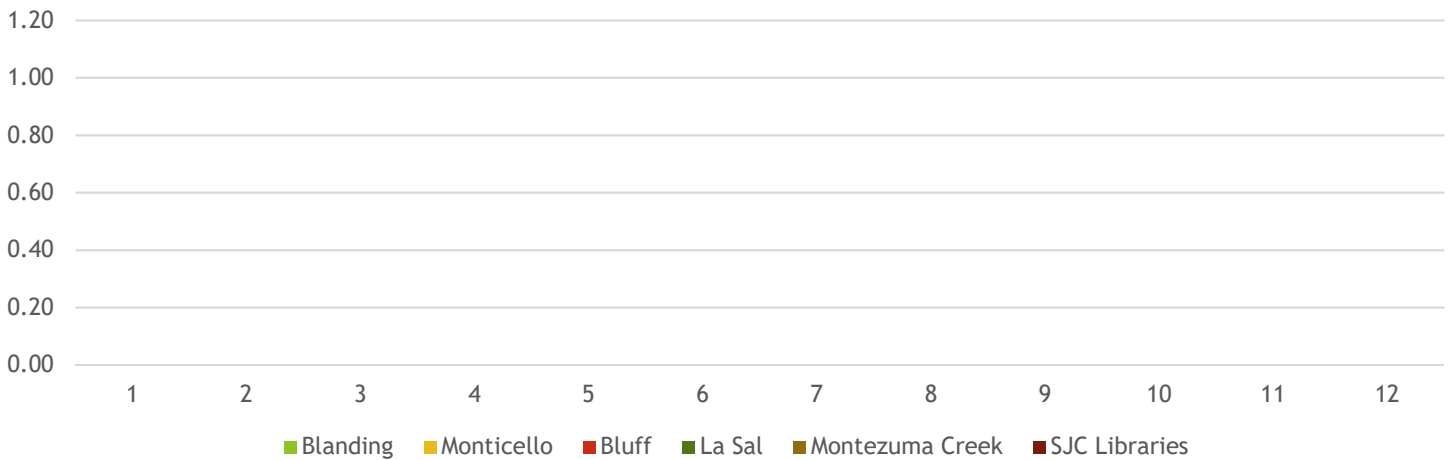
CASH REGISTER | \$ COLLECTED



SJC CREDIT CARD DEPOSITS



GRANT \$



SELF DIRECTED ACTIVITY PARTICIPANTS

	JAN	FEB	MAR	APR	MAY	JUN	JUL	AUG	SEP	OCT	NOV	DEC	Total
	1	2	3	4	5	6	7	8	9	10	11	12	■
Participants 0-5													
Blanding	85	83	50	140	81	55	58	85					637
Monticello	2	14	3	5	28	23	28	18					121
Bluff	1	3	2	2	1	3	3	2					17
La Sal													
Montezuma Creek	5	4	6	4	4	7	8	3					41
Total	93	104	61	151	114	88	97	108					816

Participants 6-11													
Blanding	27	23	20	38	35	45	40	44					272
Monticello	9	8	10	34	41	41	53	28					224
Bluff	3	1	5	2	5	6	4	2					28
La Sal					2			1					3
Montezuma Creek	7	5	3	5	4	6	4	2					36
Total	46	37	38	79	87	98	101	77					563

Participants 12-18													
Blanding	7	7	9	10	13	19	8	10					83
Monticello													
Bluff													
La Sal													
Montezuma Creek													
Total	7	7	9	10	13	19	8	10					83

Participants ADULT													
Blanding	8	4	4	8	2	20	25	15					86
Monticello													
Bluff													
La Sal													
Montezuma Creek													
Total	8	4	4	8	2	20	25	15					86

Participants GENERAL													
Blanding													
Monticello													
Bluff													
La Sal													
Montezuma Creek													
Total													

Grand Total	154	152	112	248	216	225	231	210					1548
--------------------	------------	------------	------------	------------	------------	------------	------------	------------	--	--	--	--	-------------

UNIQUE ACTIVITIES

	JAN	FEB	MAR	APR	MAY	JUN	JUL	AUG	SEP	OCT	NOV	DEC	Total
	1	2	3	4	5	6	7	8	9	10	11	12	■
Unique Activities 0-5													
Blanding	3	3	3	3	3	4	4	3					26
Monticello													
Bluff	1	1	1	1	1	1	1	1					8
La Sal													
Montezuma Creek	1	1	1	1	1	1	1	1					8
Total	5	5	5	5	5	6	6	5					42

Unique Activities 6-11													
Blanding	3	2	3	3	3	4	5	3					26
Monticello													
Bluff	1	1	1	1	1	1	1	1					8
La Sal					1			1					2
Montezuma Creek	1	1	1	1	1	1	1	1					8
Total	5	4	5	5	6	6	7	6					44

Unique Activities 12-18													
Blanding	2	2	3	3	2	4	3	3					22
Monticello													
Bluff													
La Sal													
Montezuma Creek													
Total	2	2	3	3	2	4	3	3					22

Unique Activities ADULT													
Blanding	1	1	1	1	1	1	1	1					8
Monticello													
Bluff													
La Sal													
Montezuma Creek													
Total	1	1	1	1	1	1	1	1					8

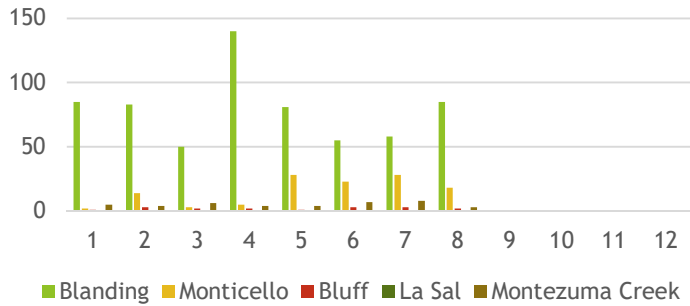
Unique Activities GENERAL													
Blanding													
Monticello													
Bluff													
La Sal													
Montezuma Creek													
Total													

Grand Total	13	12	14	14	14	17	17	15					116
--------------------	-----------	-----------	-----------	-----------	-----------	-----------	-----------	-----------	--	--	--	--	------------

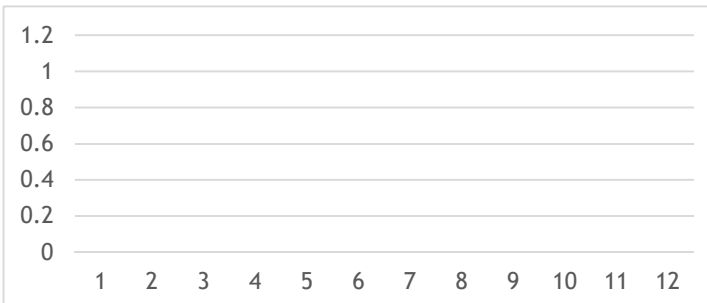
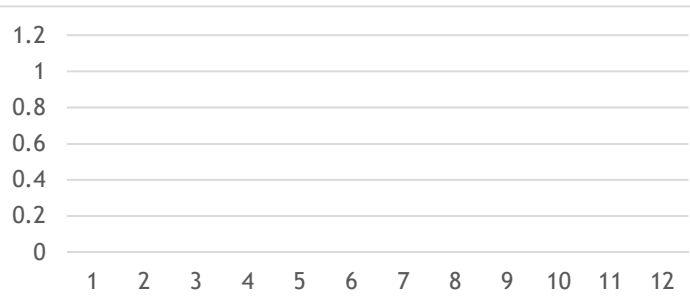
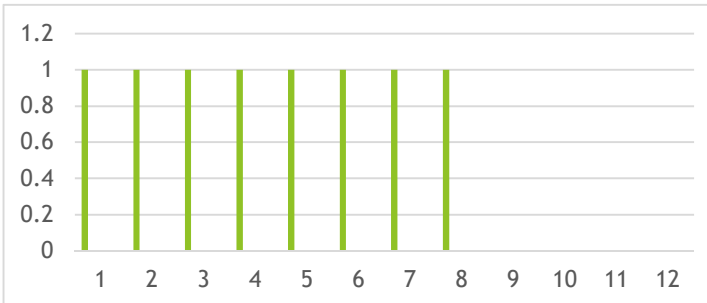
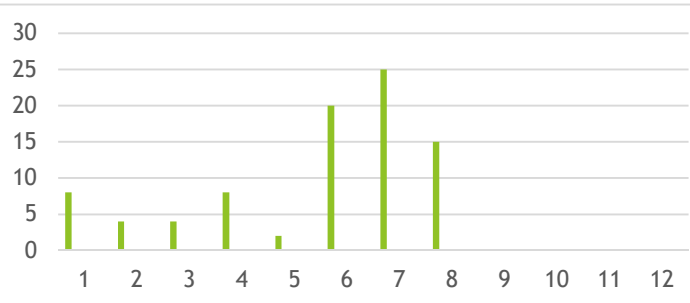
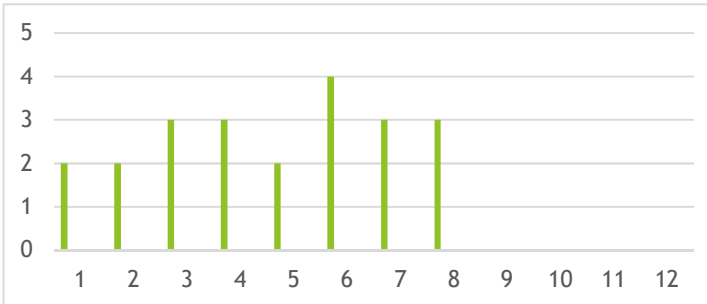
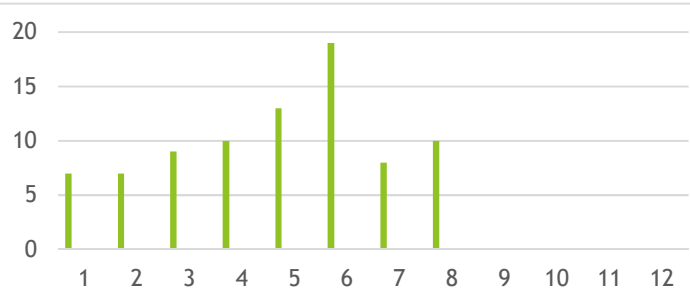
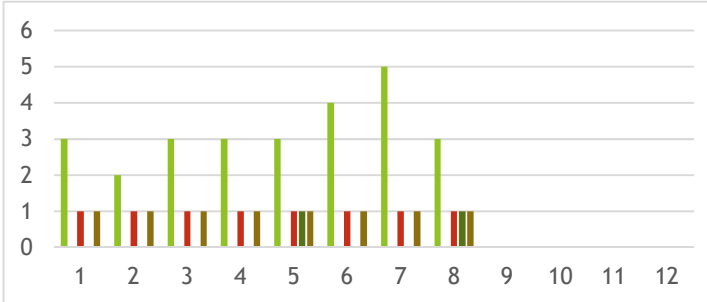
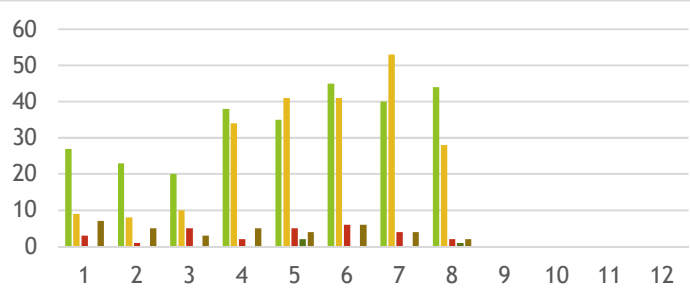
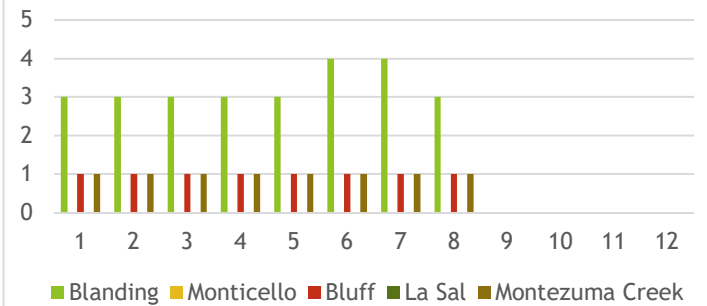
SAN JUAN COUNTY STATISTICS | 3

SELF DIRECTED ACTIVITIES

ACTIVITY PARTICIPANTS



UNIQUE ACTIVITIES



LIBRARY EVENT PARTICIPANTS

UNIQUE EVENTS

	JAN 1	FEB 2	MAR 3	APR 4	MAY 5	JUN 6	JUL 7	AUG 8	SEP 9	OCT 10	NOV 11	DEC 12	Total
Participants 0-5													
Blanding	72	61	61	63	124	107	58	50					596
Monticello	23	32	32	40	60	27	10	3					227
Bluff													
La Sal													
Montezuma Creek							10						10
Total	95	93	93	103	184	134	78	53					833

	JAN 1	FEB 2	MAR 3	APR 4	MAY 5	JUN 6	JUL 7	AUG 8	SEP 9	OCT 10	NOV 11	DEC 12	Total
Unique Activities 0-5													
	5	4	4	4	5	3	3	4					32
						1							1
	5	4	4	4	5	4	3	4					33

Participants 6-11													
Blanding			59			183	135						377
Monticello	62	89	85	47	263	64	63						673
Bluff													
La Sal													
Montezuma Creek													
Total	62	89	144	47	263	247	198						1,050

Unique Activities 6-11													
			1			2	3						6
			1			2	3						6

Participants 12-18													
Blanding						35	5						40
Monticello													
Bluff													
La Sal													
Montezuma Creek													
Total						35	5						40

Unique Activities 12-18													
						3	3						6
						3	3						6

Participants ADULT													
Blanding	12	10	20	36	100	73	15	103					369
Monticello													
Bluff													
La Sal													
Montezuma Creek													
Total	12	10	20	36	100	73	15	103					369

Unique Activities ADULT													
	1	1	2	4	4	3	1	6					22
	1	1	2	4	4	3	1	6					22

Participants GENERAL													
Blanding						6	379						385
Monticello													
Bluff													
La Sal													
Montezuma Creek													
Total						6	379						385

Unique Activities GENERAL													
										1	1		2
										1	1		2

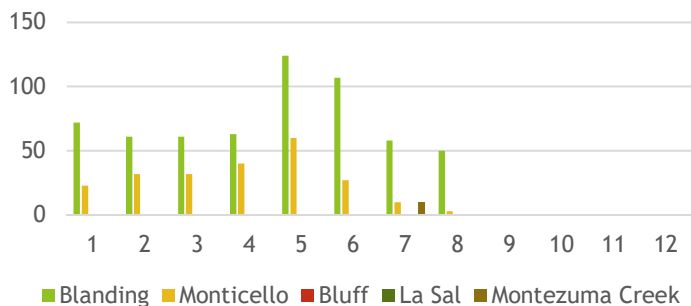
Grand Total	169	192	257	186	547	495	675	156					2677
--------------------	------------	------------	------------	------------	------------	------------	------------	------------	--	--	--	--	-------------

6	5	7	8	9	13	11	10						69
----------	----------	----------	----------	----------	-----------	-----------	-----------	--	--	--	--	--	-----------

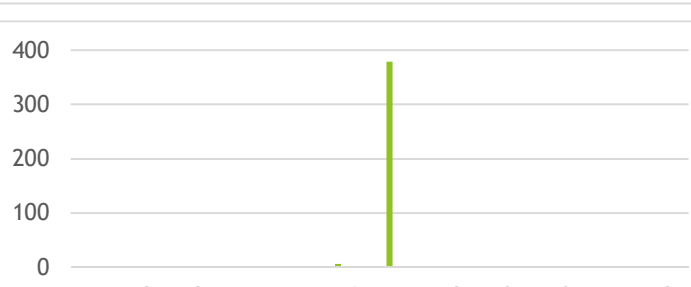
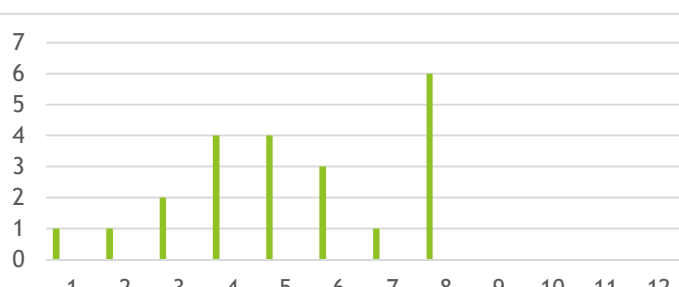
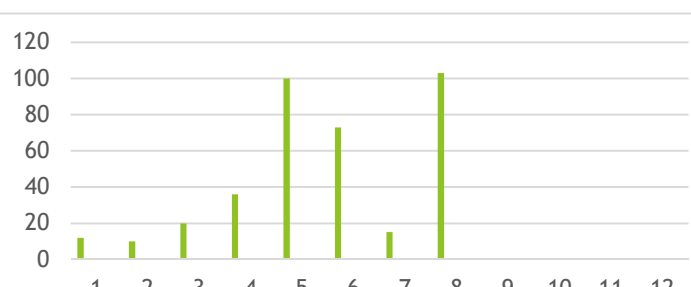
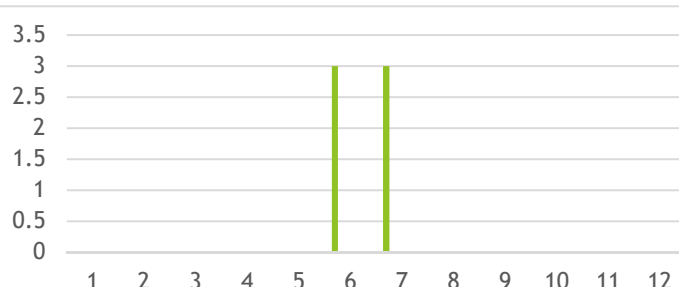
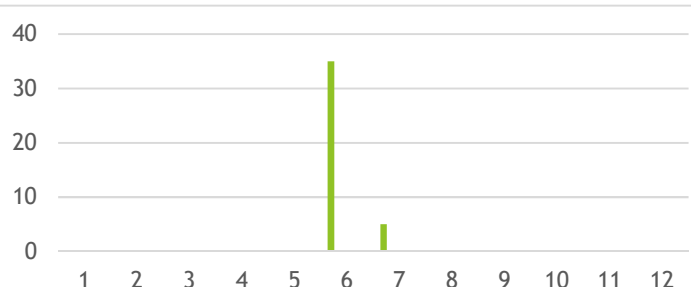
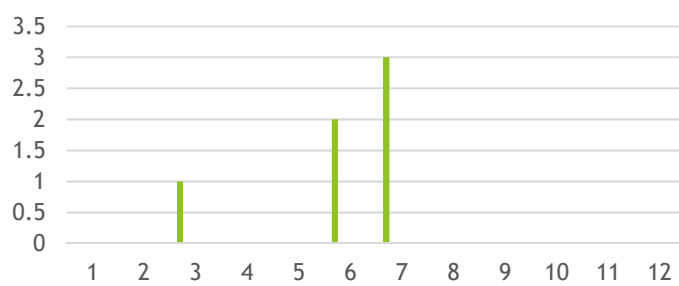
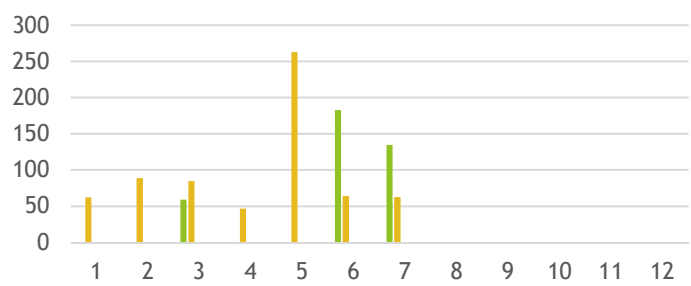
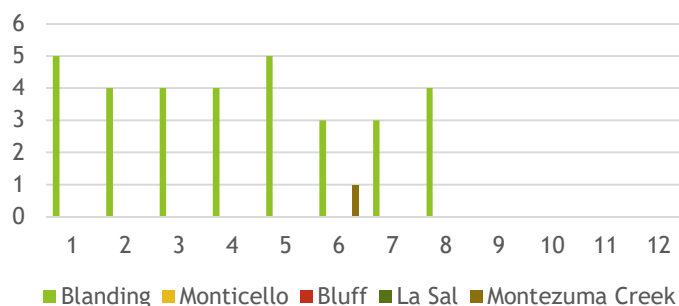
SAN JUAN COUNTY STATISTICS | 4

LIBRARY EVENTS

EVENT PARTICIPANTS



UNIQUE EVENTS



OFFSITE EVENT PARTICIPANTS

	JAN	FEB	MAR	APR	MAY	JUN	JUL	AUG	SEP	OCT	NOV	DEC	Total
	1	2	3	4	5	6	7	8	9	10	11	12	■
Participants 0-5													
Blanding													
Monticello								50					50
Bluff													
La Sal													
Montezuma Creek													
Total								50					50

Participants 6-11													
Blanding													
Monticello								150					150
Bluff													
La Sal													
Montezuma Creek													
Total								150					150

Participants 12-18													
Blanding													
Monticello													
Bluff													
La Sal													
Montezuma Creek													
Total													

Participants ADULT													
Blanding													
Monticello	165	169	214	201	247	184	187	241					1,608
Bluff													
La Sal													
Montezuma Creek													
Total	165	169	214	201	247	184	187	241					1,608

Participants GENERAL													
Blanding								850					850
Monticello													
Bluff													
La Sal													
Montezuma Creek													
Total								850					850

Grand Total	165	169	214	201	247	184	1037	441					2658
--------------------	-----	-----	-----	-----	-----	-----	------	-----	--	--	--	--	------

UNIQUE EVENTS

	JAN	FEB	MAR	APR	MAY	JUN	JUL	AUG	SEP	OCT	NOV	DEC	Total
	1	2	3	4	5	6	7	8	9	10	11	12	■
Unique Activities 0-5													
Blanding													
Monticello								1					1
Bluff													
La Sal													
Montezuma Creek													
Total								1					1

Unique Activities 6-11													
Blanding													
Monticello								1					1
Bluff													
La Sal													
Montezuma Creek													
Total								1					1

Unique Activities 12-18													
Blanding													
Monticello													
Bluff													
La Sal													
Montezuma Creek													
Total													

Unique Activities ADULT													
Blanding													
Monticello	4	4	5	4	5	4	4	5					35
Bluff													
La Sal													
Montezuma Creek													
Total	4	4	5	4	5	4	4	5					35

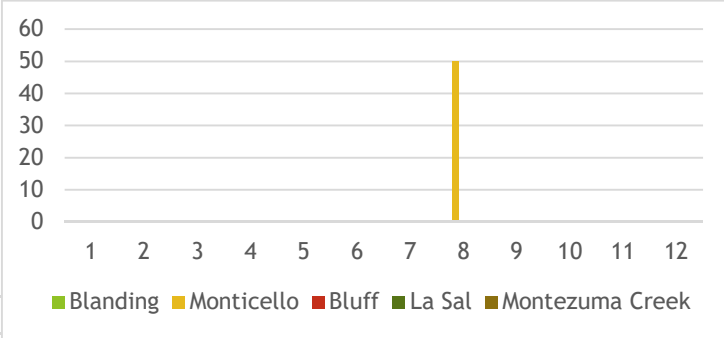
Unique Activities GENERAL													
Blanding													
Monticello								1					1
Bluff													
La Sal													
Montezuma Creek													
Total								1					1

Grand Total	4	4	5	4	5	4	4	8					38
--------------------	---	---	---	---	---	---	---	---	--	--	--	--	----

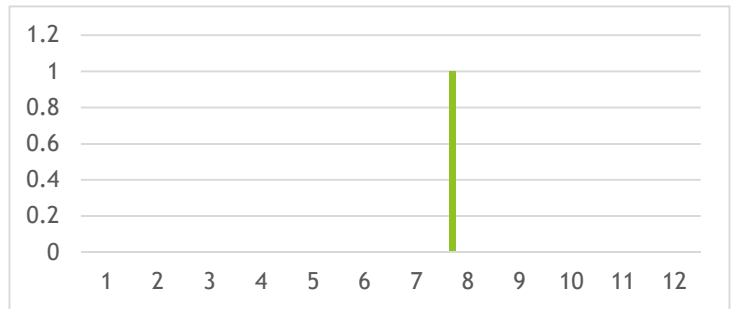
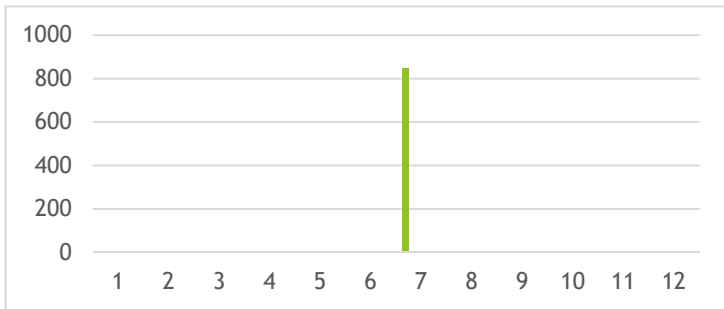
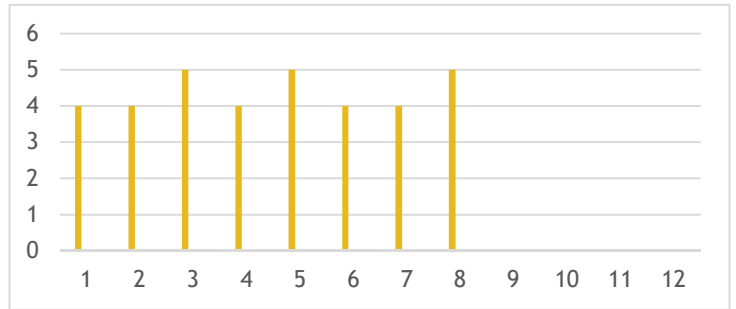
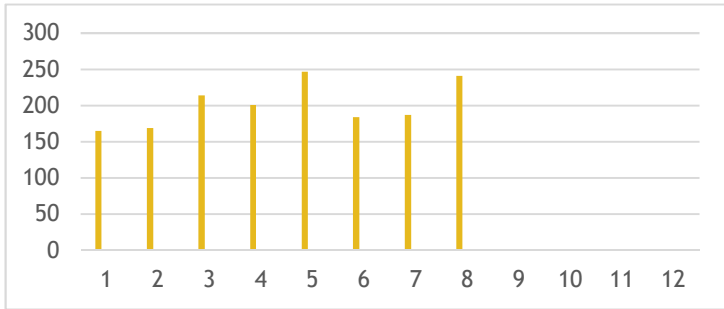
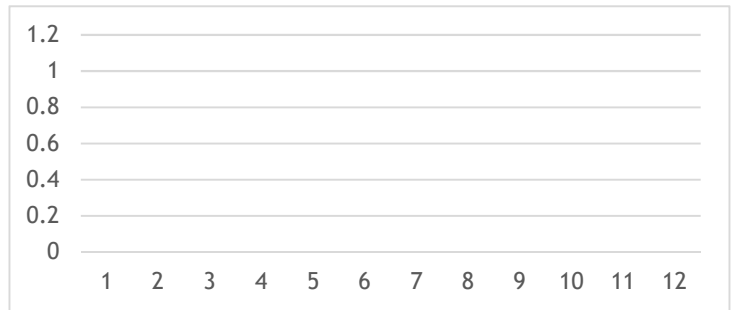
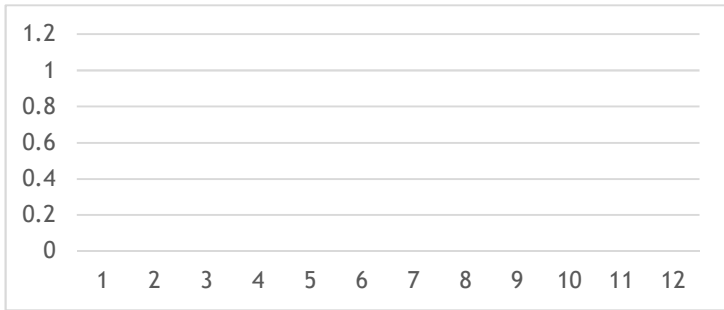
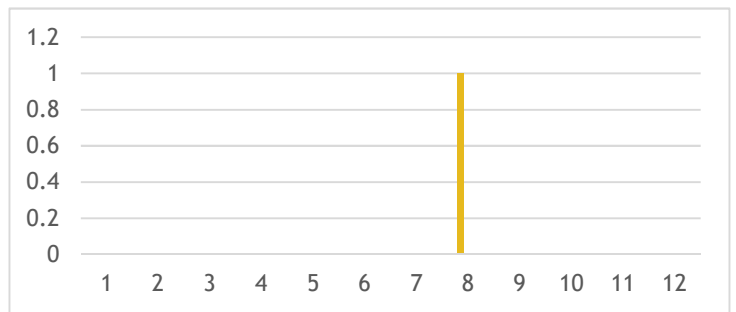
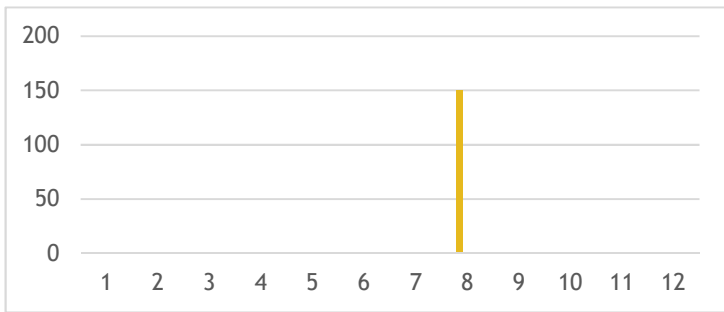
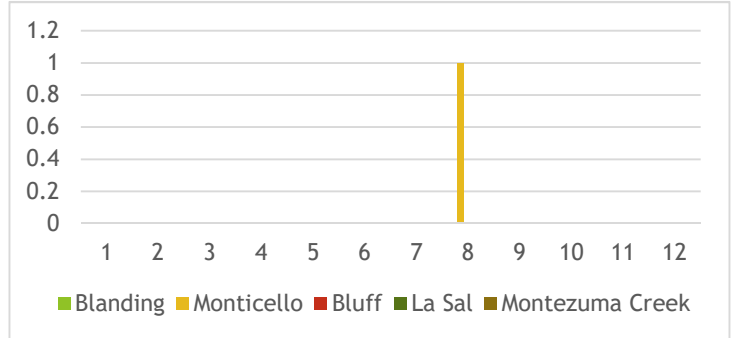
SAN JUAN COUNTY STATISTICS | 5

OFFSITE EVENTS

EVENT PARTICIPANTS



UNIQUE EVENTS



VIRTUAL PARTICIPANTS

UNIQUE EVENTS

	JAN	FEB	MAR	APR	MAY	JUN	JUL	AUG	SEP	OCT	NOV	DEC	Total
	1	2	3	4	5	6	7	8	9	10	11	12	■
Participants 0-5													
Blanding													
Monticello													
Bluff													
La Sal													
Montezuma Creek													
Total													

	JAN	FEB	MAR	APR	MAY	JUN	JUL	AUG	SEP	OCT	NOV	DEC	Total
	1	2	3	4	5	6	7	8	9	10	11	12	■
Unique Activities 0-5													

Participants 6-11													
Blanding								330					330
Monticello													
Bluff													
La Sal													
Montezuma Creek													
Total								330					330

Unique Activities 6-11													
										1			1
										1			1

Participants 12-18													
Blanding													
Monticello													
Bluff													
La Sal													
Montezuma Creek													
Total													

Unique Activities 12-18													

Participants ADULT													
Blanding													
Monticello													
Bluff													
La Sal													
Montezuma Creek													
Total													

Unique Activities ADULT													

Participants GENERAL													
Blanding								775					775
Monticello													
Bluff													
La Sal													
Montezuma Creek													
Total								775					775

Unique Activities GENERAL													
										1			1
										1			1

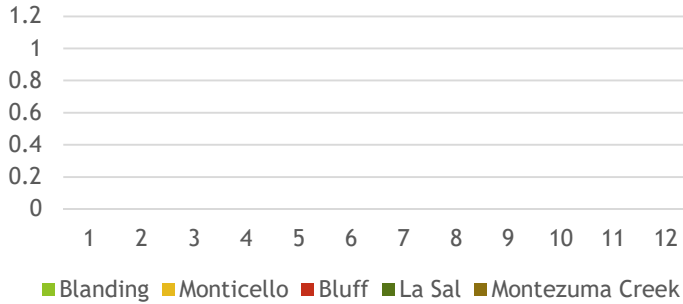
Grand Total								1105						1105
--------------------	--	--	--	--	--	--	--	-------------	--	--	--	--	--	-------------

														2
--	--	--	--	--	--	--	--	--	--	--	--	--	--	----------

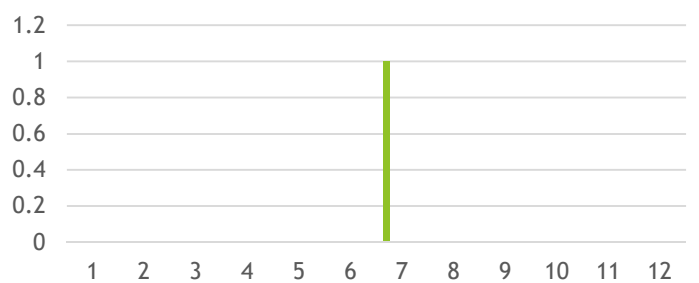
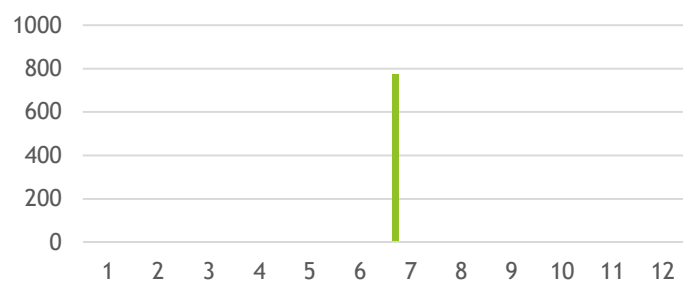
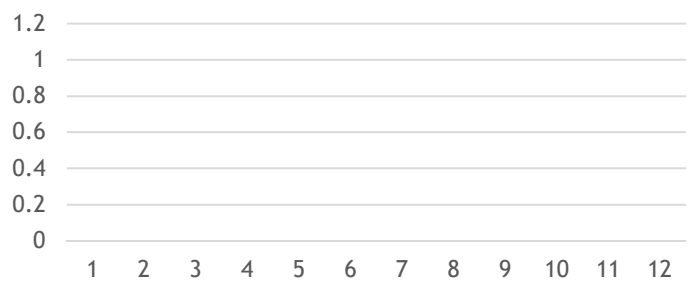
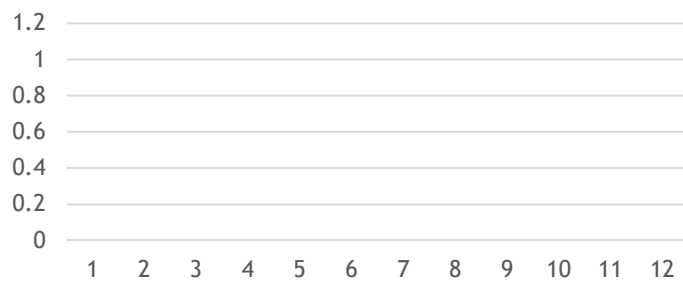
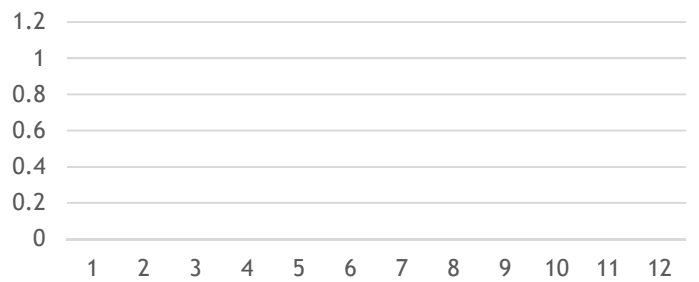
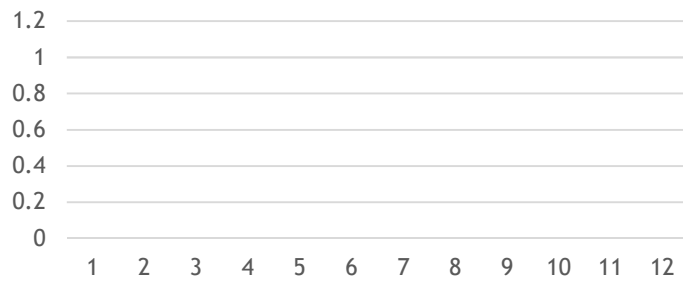
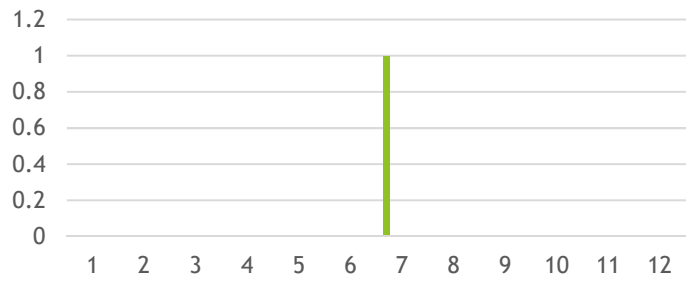
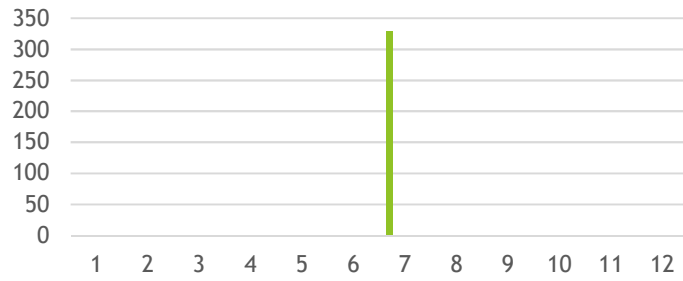
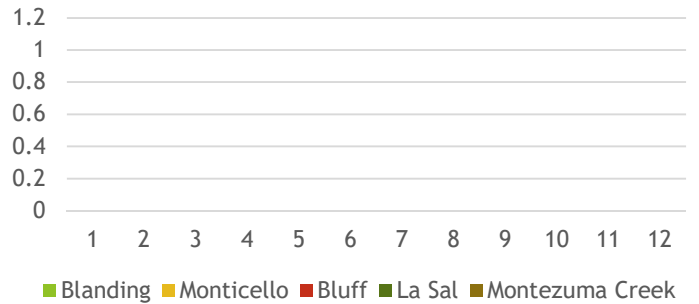
SAN JUAN COUNTY STATISTICS | 6

VIRTUAL EVENTS

EVENT PARTICIPANTS



UNIQUE EVENTS



SAN JUAN COUNTY STATISTICS | 7

October 10, 2024

SUMMER READING PROGRAM SIGN UP

Sign Up	0 - 11	12-18	General	Total
Blanding	147	22		169
Monticello	86	14		100
Bluff	2	1		3
La Sal				
Montezuma Creek	12	2		14
Total	247	39		286

SUMMER READING EVENT PARTICIPANTS

Participants	0 - 11	12-18	General	Total
Blanding	328	59	385	772
Monticello	127		269	396
Bluff				
La Sal				
Montezuma Creek	10			10
Total	465	59	654	1,178

SUMMER READING UNIQUE EVENTS

Unique Events	0 - 11	12-18	General	Total
Blanding	6	6	2	14
Monticello	5		2	7
Bluff				
La Sal				
Montezuma Creek	1			1
Total	12	6	4	22

SAN JUAN COUNTY STATISTICS | 7

October 10, 2024

