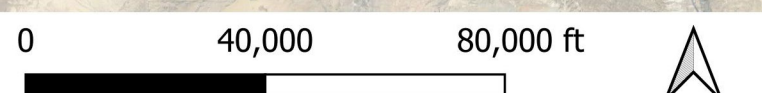


**LEGEND**

- Incorporated Cities
- SITLA Land
- Federal Lands
- Reservation
- San Juan County Zoning (2024)**
- Residential (RS)
- Agricultural (AG)
- Highway Commercial (HC)
- Community Commercial (CC)
- Multiple Use (MU)
- Industrial (I)
- Recreational Support (REC)
- State Trust (SITLA) Spanish Valley Plan (Adopted)**
- SITLA SV Community Structure Plan
- Central Development Area District
- Flex Development District
- Neighborhood Center District
- Perimeter Development Area District
- SITLA SV Area Plan South Parcels
- Non-Buildable

Map illustrates representation of zoning intentions. For actual survey data, refer to recorded plat.

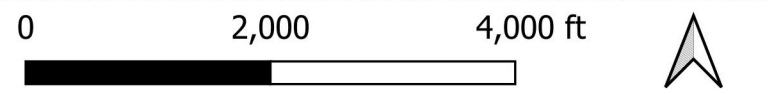
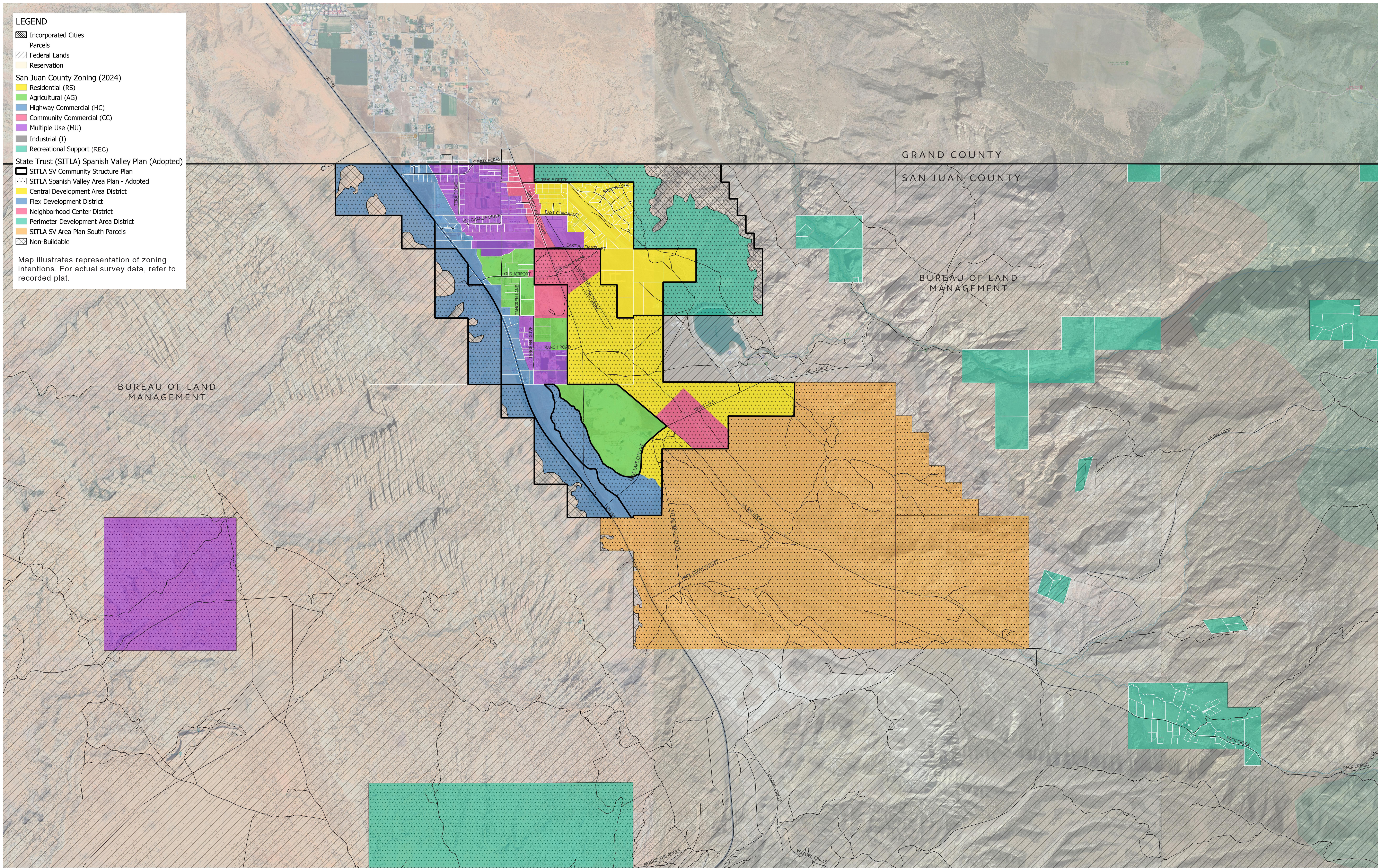




**LEGEND**


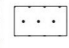



- Incorporated Cities
- Parcels
- Federal Lands
- Reservation
- San Juan County Zoning (2024)**
- Residential (RS)
- Agricultural (AG)
- Highway Commercial (HC)
- Community Commercial (CC)
- Multiple Use (MU)
- Industrial (I)
- Recreational Support (REC)
- State Trust (SITLA) Spanish Valley Plan (Adopted)**
- SITLA SV Community Structure Plan
- SITLA Spanish Valley Area Plan - Adopted
- Central Development Area District
- Flex Development District
- Neighborhood Center District
- Perimeter Development Area District
- SITLA SV Area Plan South Parcels
- Non-Buildable

Map illustrates representation of zoning intentions. For actual survey data, refer to recorded plat.



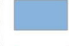
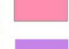







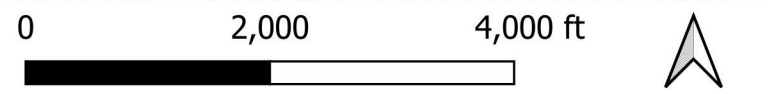
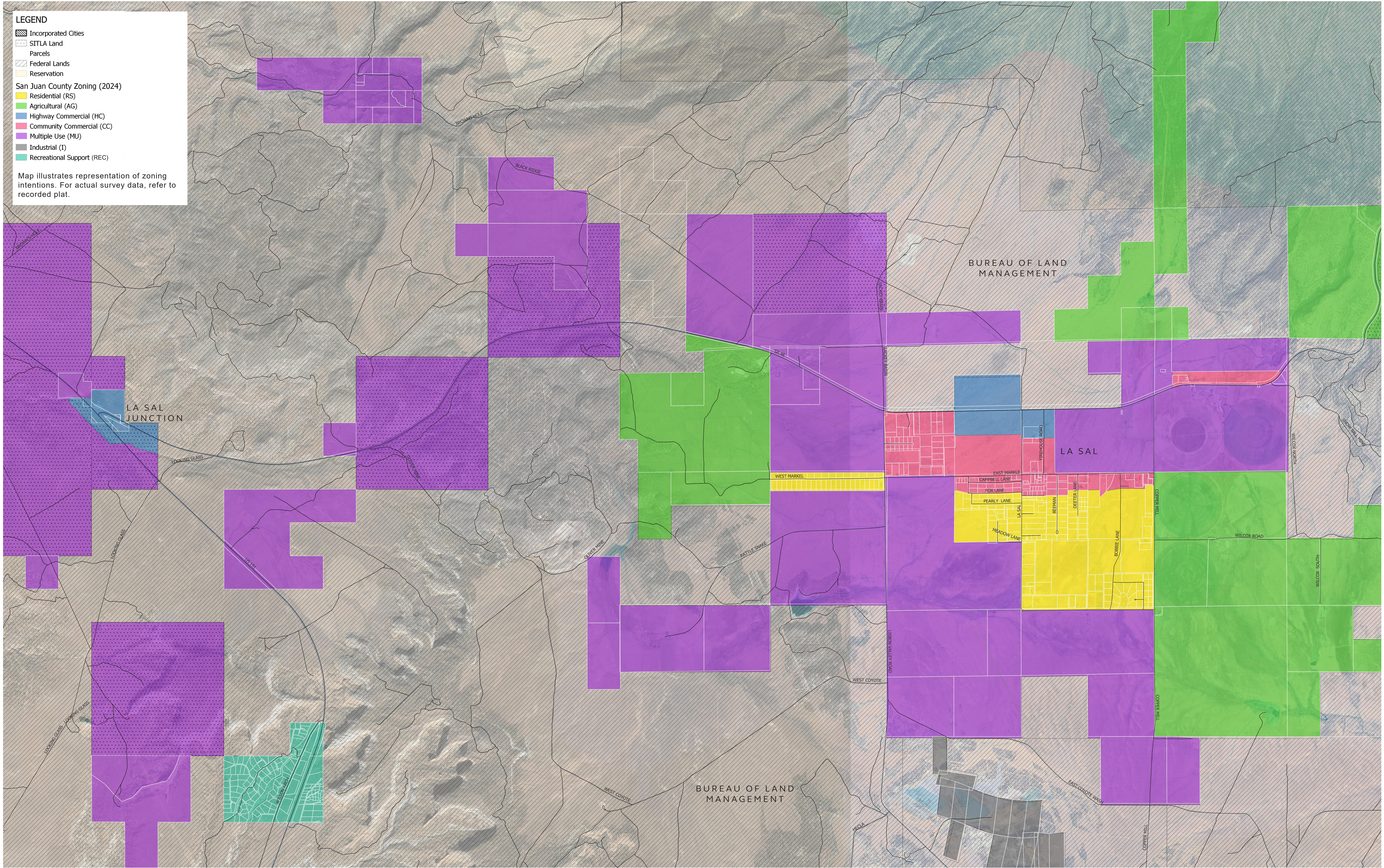
**LEGEND**

-  Incorporated Cities
-  SITLA Land
-  Parcels
-  Federal Lands
-  Reservation

**San Juan County Zoning (2024)**


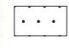



-  Residential (RS)
-  Agricultural (AG)
-  Highway Commercial (HC)
-  Community Commercial (CC)
-  Multiple Use (MU)
-  Industrial (I)
-  Recreational Support (REC)

Map illustrates representation of zoning intentions. For actual survey data, refer to recorded plat.



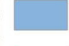
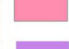







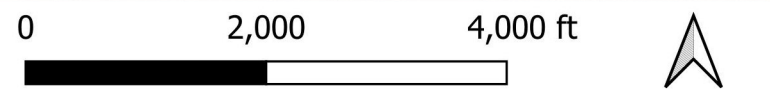
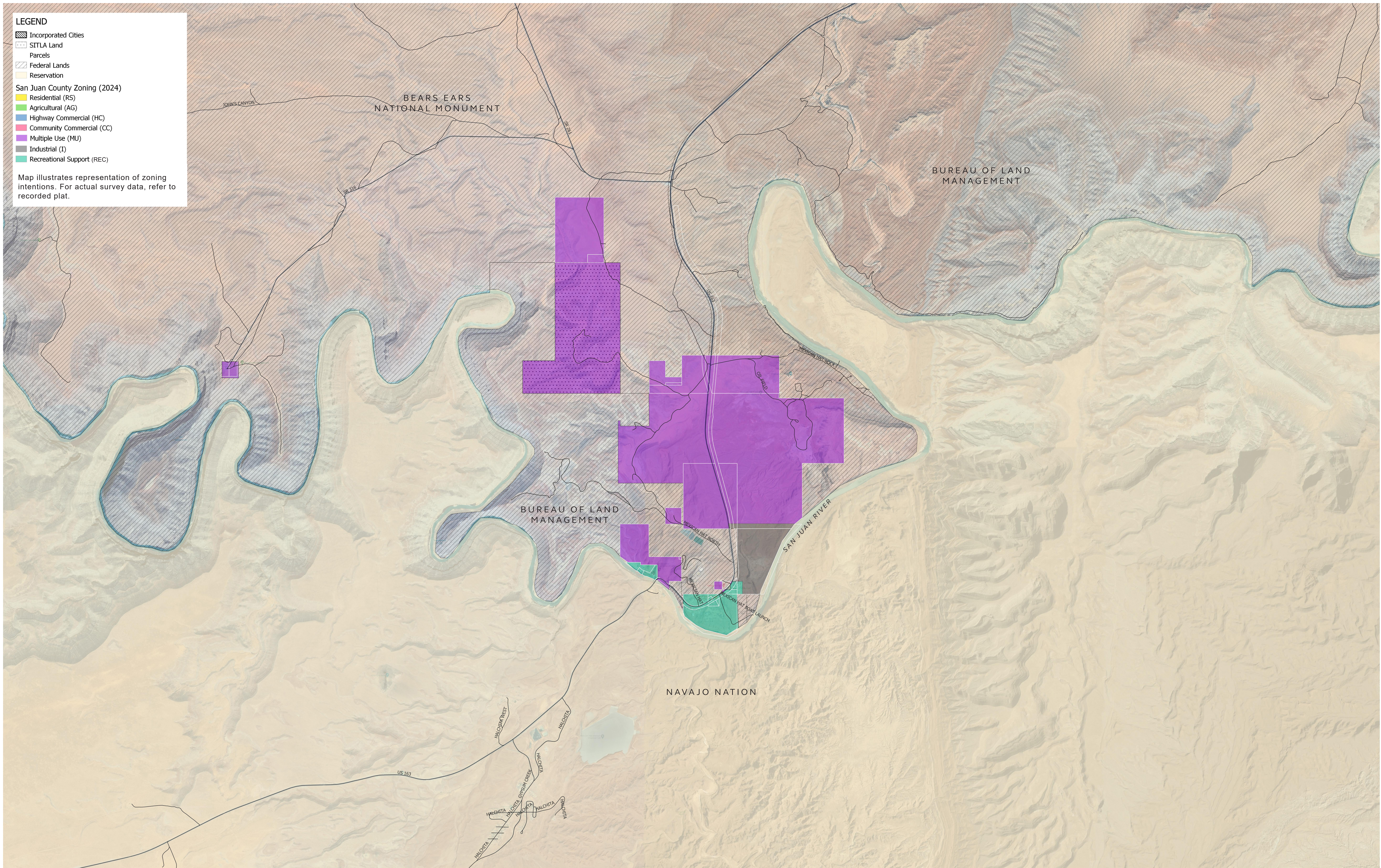
**LEGEND**

-  Incorporated Cities
-  SITLA Land
-  Parcels
-  Federal Lands
-  Reservation

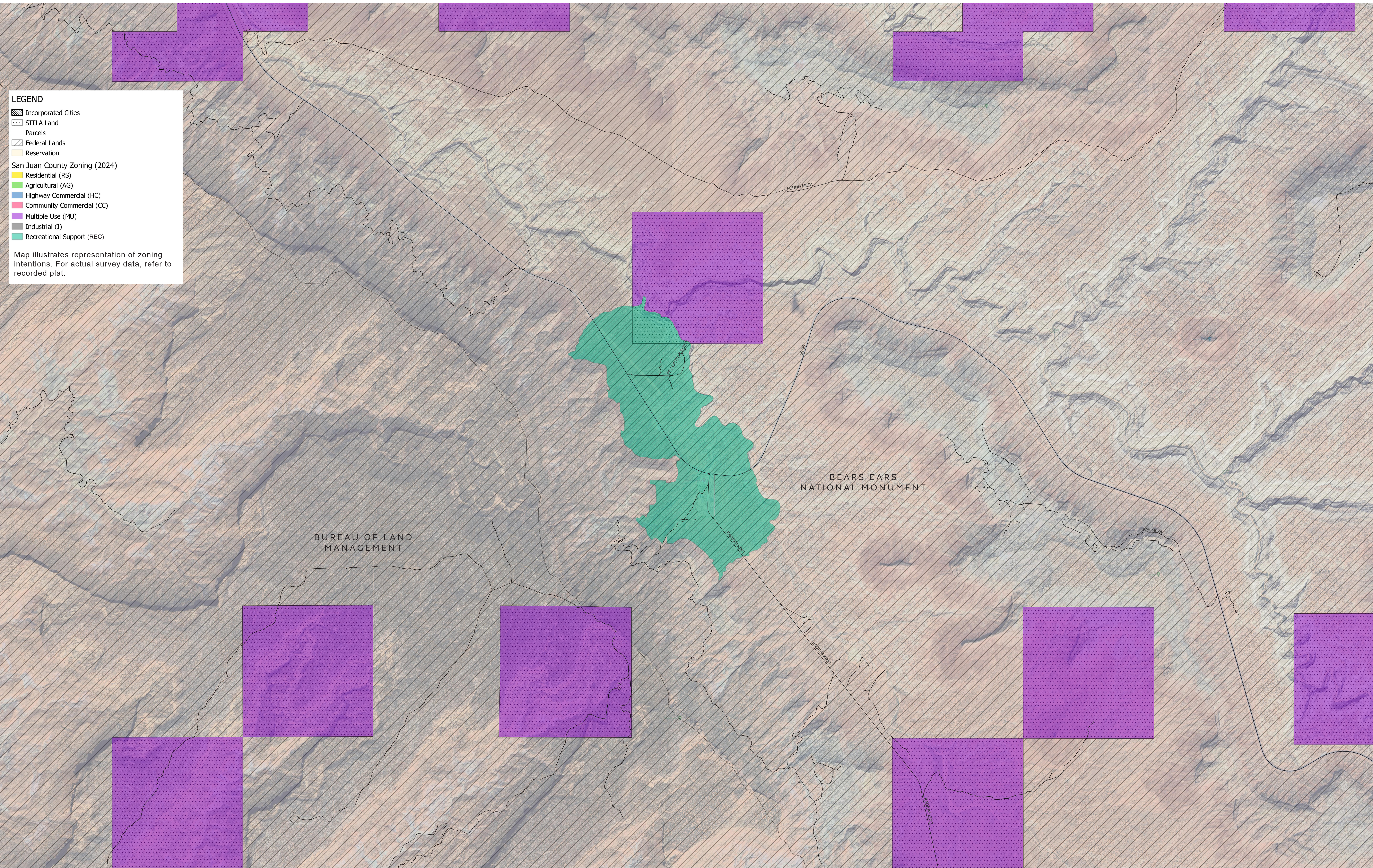
**San Juan County Zoning (2024)**

-  Residential (RS)
-  Agricultural (AG)
-  Highway Commercial (HC)
-  Community Commercial (CC)
-  Multiple Use (MU)
-  Industrial (I)
-  Recreational Support (REC)

Map illustrates representation of zoning intentions. For actual survey data, refer to recorded plat.



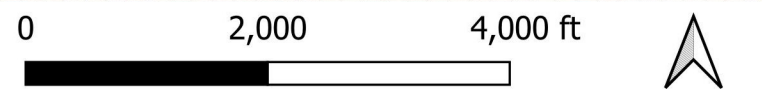










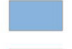
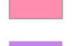

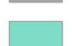

**LEGEND**

- Incorporated Cities
- SITLA Land
- Parcels
- Federal Lands
- Reservation
- San Juan County Zoning (2024)**
- Residential (RS)
- Agricultural (AG)
- Highway Commercial (HC)
- Community Commercial (CC)
- Multiple Use (MU)
- Industrial (I)
- Recreational Support (REC)

Map illustrates representation of zoning intentions. For actual survey data, refer to recorded plat.



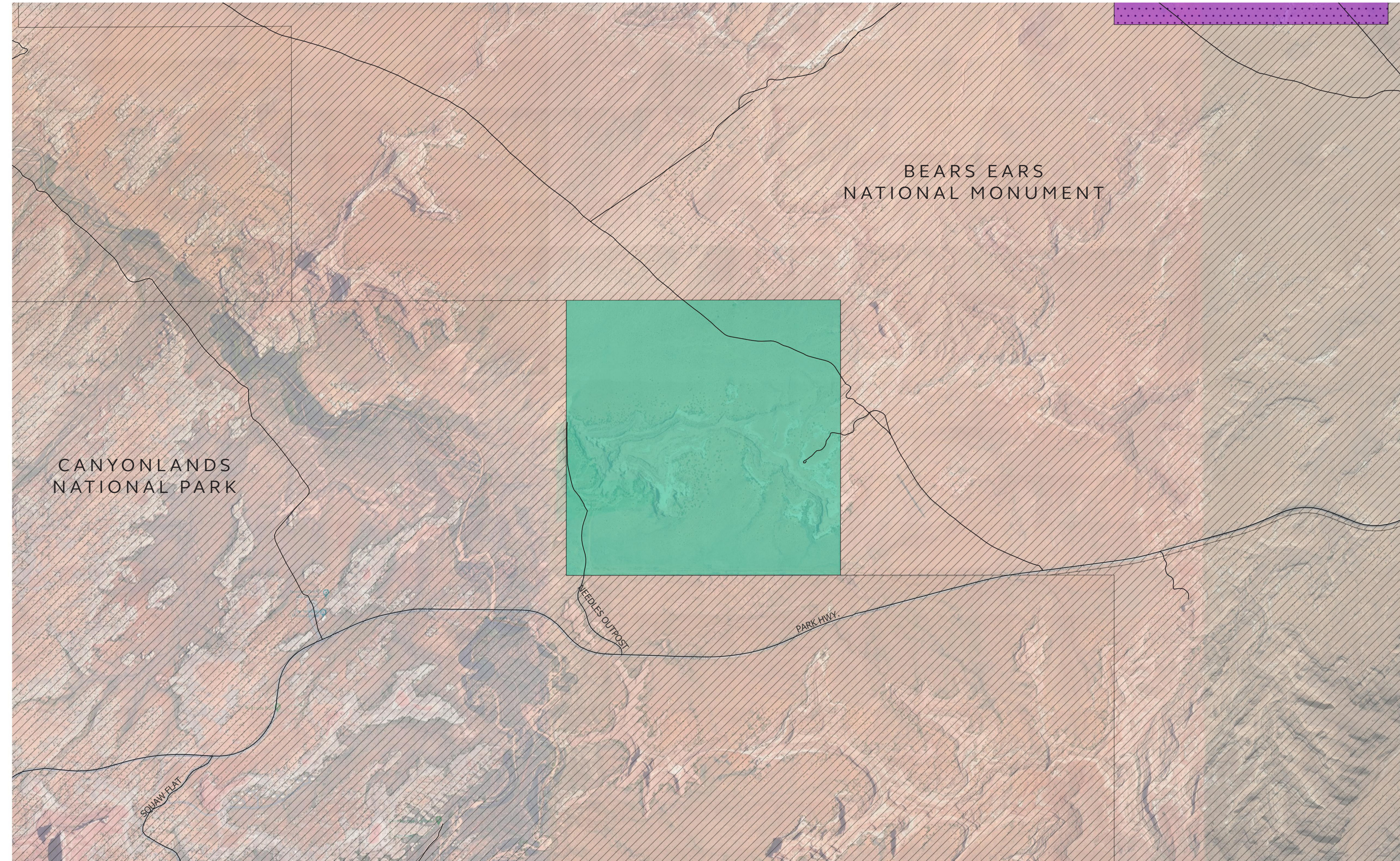


- LEGEND**
-  Incorporated Cities
  -  SITLA Land
  -  Parcels
  -  Federal Lands
  -  Reservation
- San Juan County Zoning (2024)**
-  Residential (RS)
  -  Agricultural (AG)
  -  Highway Commercial (HC)
  -  Community Commercial (CC)
  -  Multiple Use (MU)
  -  Industrial (I)
  -  Recreational Support (REC)

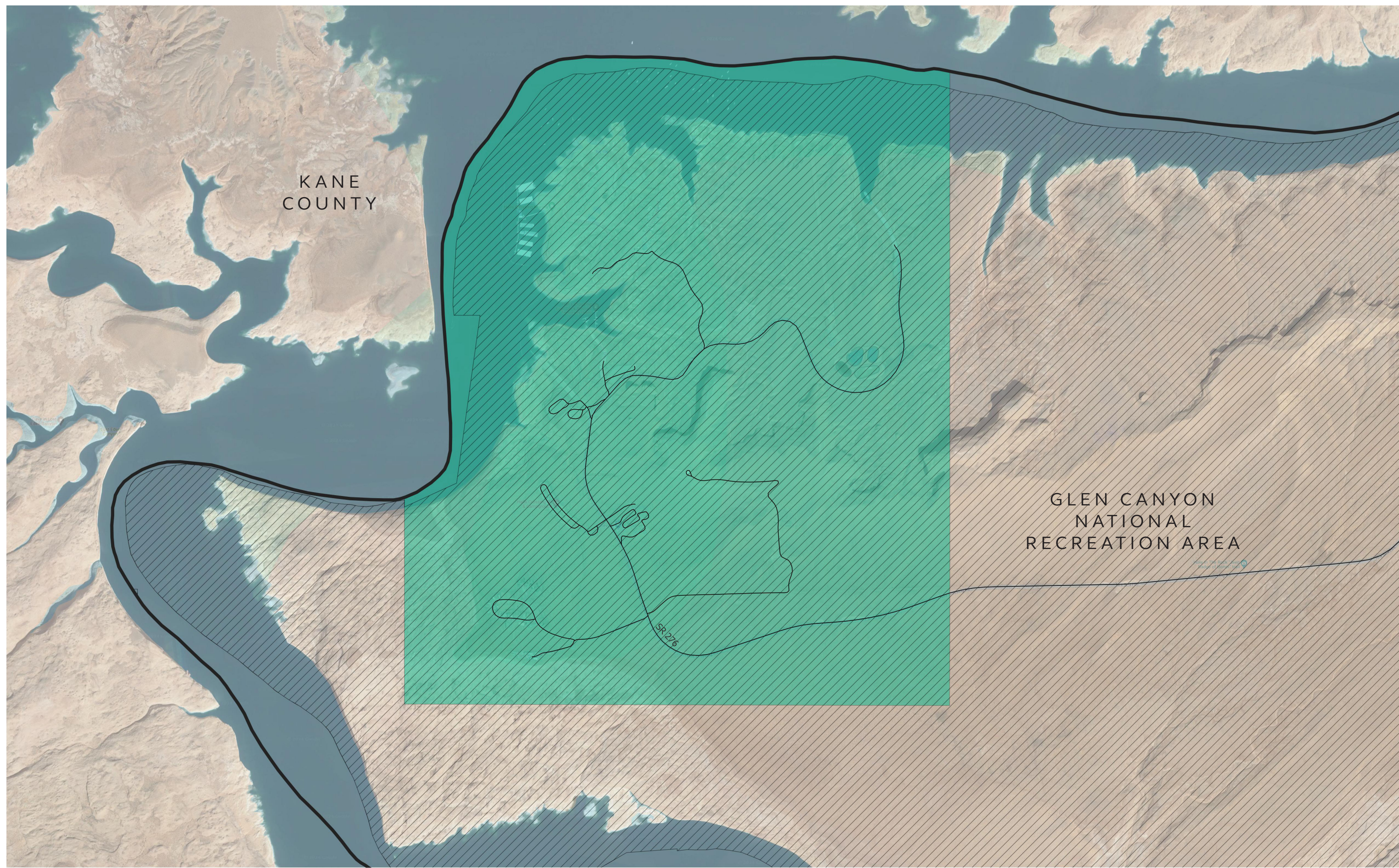
Map illustrates representation of zoning intentions. For actual survey data, refer to recorded plat.



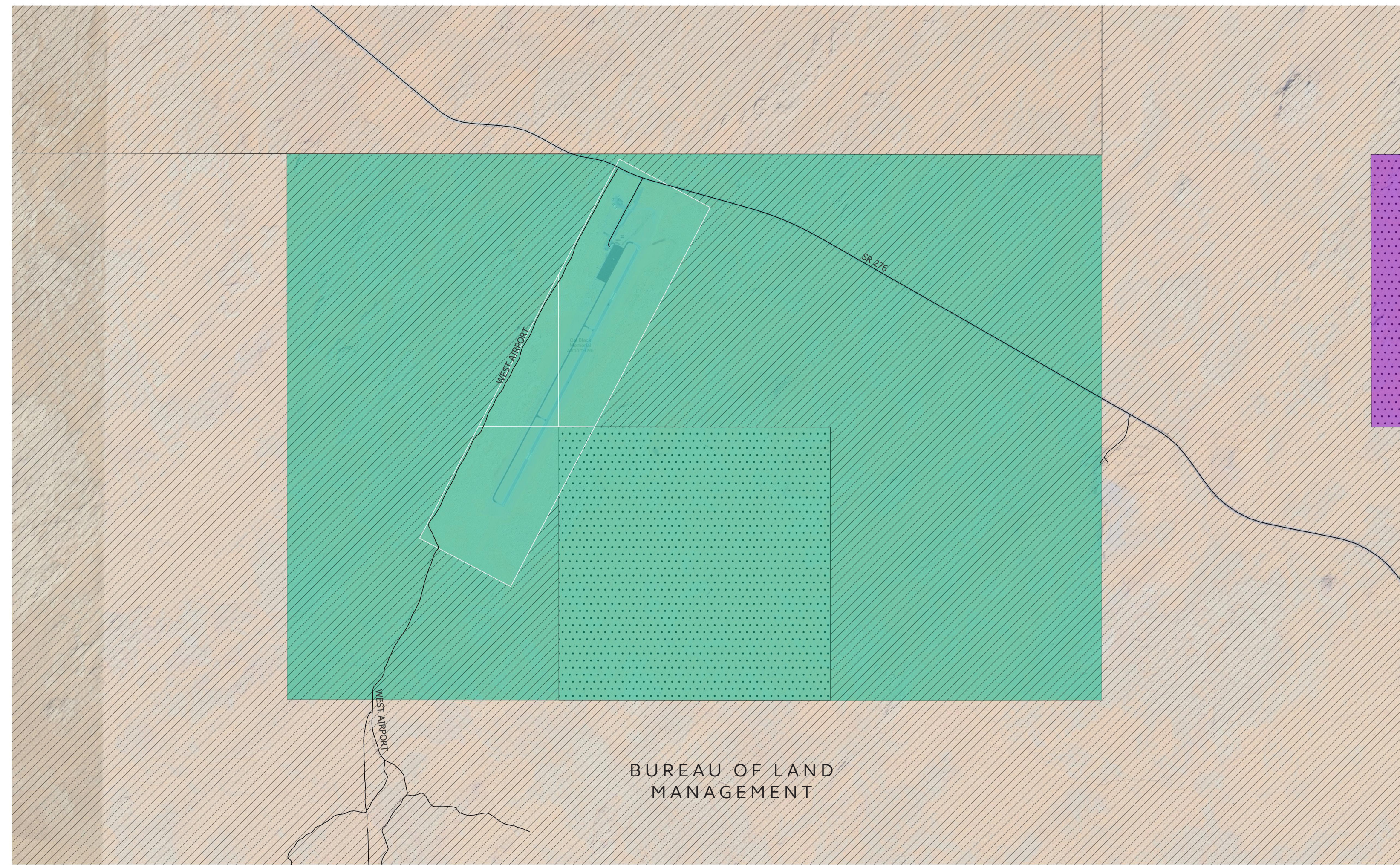
HITE CROSSING



NEEDLES OUTPOST, ENTRANCE TO CANYONLANDS NATIONAL PARK



HALL'S CROSSING



CAL BLACK MEMORIAL AIRPORT

