



Forest Service
US DEPARTMENT OF AGRICULTURE

Intermountain Region
Manti-La Sal National Forest

An aerial photograph of a vast mountain range. The foreground is a dense, green forest. In the middle ground, a valley is filled with a mix of green and yellow trees, suggesting early autumn. The background shows rugged mountain peaks with some rocky outcrops, bathed in the warm, golden light of a setting or rising sun. The sky is a clear, pale blue with a few wispy clouds.

Manti-La Sal National Forest

Land Management Plan Revision and EIS Update

August 2024

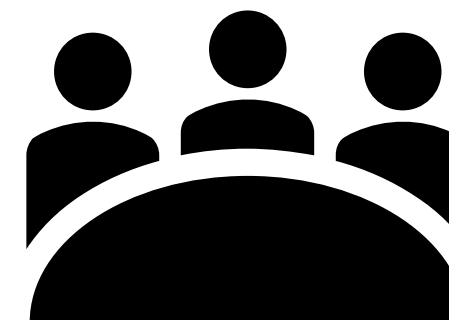


Forest Leadership

- Barbara Van Alstine - Forest Supervisor (barbara.vanalstine@usda.gov)
- Michael Engelhart – Moab and Monticello District Ranger (michael.engelhart@usda.gov)
- Orlando Cortez – Deputy District Ranger Monticello (orlando.cortez@usda.gov)
- Darren Olsen – Price and Ferron District Ranger (darren.olsen@usda.gov)
- Michael Scottorn – Acting Sanpete District Ranger (michael.scottorn@usda.gov.)

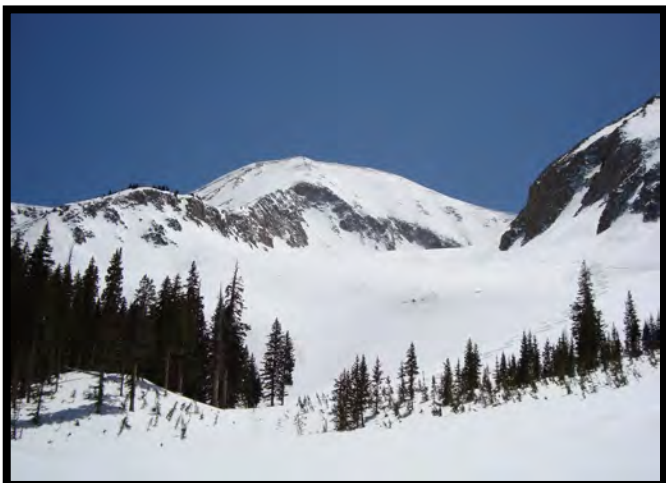
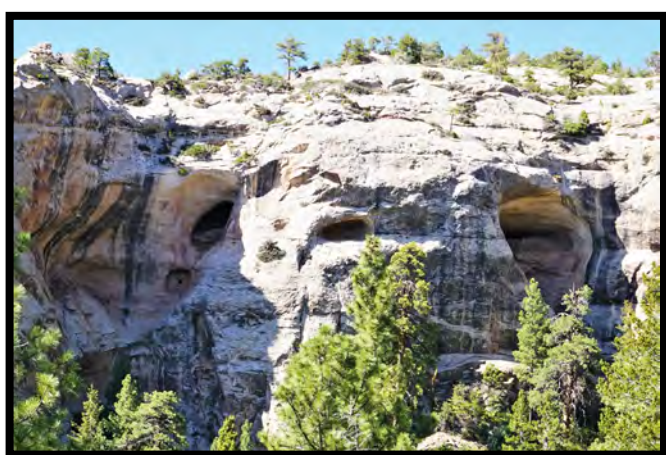
Planning Team

- Josey Muse - Acting Forest Plan Revision Team Lead (josephine.muse@usda.gov)
- Ashley Philbeck – Acting Tribal Relations Specialist (ashley.philbeck@usda.gov)
- Brock Fausett – Geospatial Planner (brock.fausett@usda.gov)



The Manti-La Sal National Forest

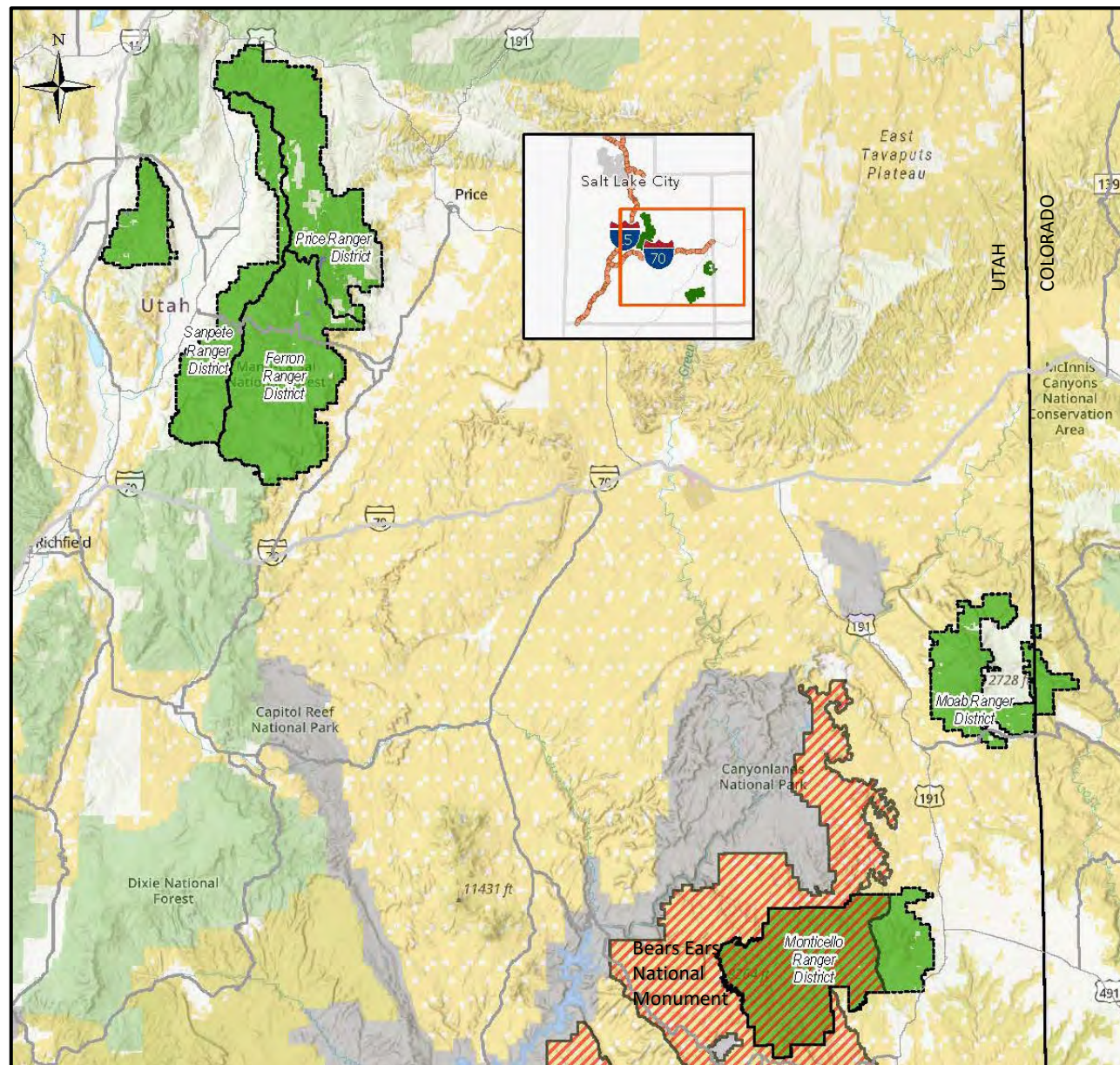
- Intermountain Region
- Central and southeastern Utah and southwestern Colorado



USDA is an equal opportunity provider and employer.



- **1.3 million acres**
- 5 Ranger Districts
- 2 States
- 10 Counties
- 2 Wilderness Areas
- Bears Ears National Monument



Pre-assessment and Assessment

- July 2016 – Notice of Initiation of Assessment
- ~900 comments
- ~500 comments on wilderness evaluation

Draft Plan Scoping

- August 2021 – Notice of Intent
- ~6,300 comments
- ~3,000 unique
- ecological resilience
- support for traditional and cultural ways of life
- sustainable recreation

Draft Plan and Draft Environmental Impact Statement

- August 2023 - Notice of Availability of DEIS and Draft Plan
- ~ 820 comment letters
- ~ 405 unique letters

- ~ 2,225 comments
- ~ 200 comment categories

1986 Plan has been amended 23 times



Comment themes from the Notice of Availability Draft EIS and Draft Forest Plan Comment Period



Cooperators

- Utah and Colorado state delegations
- 10 Nations, Tribes, and Pueblos:
 - Hopi Tribe, Navajo Nation, Pueblo of Acoma, Pueblo of Laguna, Pueblo of San Felipe, Pueblo of Tesuque, Pueblo of Zia, Pueblo of Zuni, The Ute Indian Tribe, Ute Mountain Ute
- 10 counties:
 - Utah: Carbon, Emery, Grand, Juab, San Juan, Sanpete, Sevier and Utah
 - Colorado: Mesa and Montrose
- 7 conservation districts (all in Utah):
 - Grand, Juab, Price River, San Juan, Sanpete, San Rafael, and Sevier
- 4 cities (all in Utah):
 - Blanding, Castle Valley, Moab, and Monticello
- National Park Service and Bureau of Land Management
- Utah Public Lands Policy Coordinating Office





Currently working on Content analysis and comment response.

Prepare FEIS and Final Plan

Consistency Review of the Cooperating Agencies resource management plans and the Final Plan

- Follow-up with Cooperating Agency meetings prior to the release of the Final Environmental Impact Statement (FEIS) and Final Plan

On-going Tribal Consultation prior to the release of the FEIS and Final Plan

- Complete formal consultation prior to the release of the Final Environmental Impact Statement (FEIS) and Final Plan

Conduct Regional Office and Washington Office reviews of final documents

- Working in coordination with other planning efforts: the Bears Ears National Monument Plan and the National Old Growth Amendment

FEIS/Final Plan/Draft Record of Decision is expected to be available in 2025 with a 60-day Notice of Opportunity to Object period





Planning Documents

- The draft Environmental Impact Statement, draft Forest Plan, and supporting documents are available for review on our Forest Plan Revision webpage:

[Manti-La Sal National Forest - Planning \(usda.gov\)](https://www.usda.gov/forestplanrevision/mantisal)

- An interactive map of the draft Environmental Impact Statement, draft Forest Plan can be viewed here:

[Manti-La Sal Forest Plan Revision Draft Environmental Impact Statement Interactive Map \(arcgis.com\)](https://www.arcgis.com/apps/interactivemap/index.html?appid=38484444444444444444444444444444)





Forest Service
US DEPARTMENT OF AGRICULTURE

Questions and Discussion

