

PROPOSED MIX																		
LOCKER SIZE	INTERIOR									EXTERIOR MINIS			GRAND TOTAL					
	1st Flr	SO. FT.	%	2nd Flr	SO. FT.	%	3rd Flr	SO. FT.	%	TOTAL	SO. FT.	%	QTY	SO. FT.	%	QTY	SO. FT.	%
5 x 5	37	925	6%	35	875	5%	35	875	5%	107	2675	5%	0	0	0%	107	2675	4%
5 x 10	87	4350	27%	87	4350	25%	89	4450	25%	263	13,150	25%	0	0	0%	263	13,150	22%
7 x 10	2	140	1%	1	70	0%	1	70	0%	4	280	1%	0	0	0%	4	280	0%
10 x 8	1	80	0%	2	160	1%	1	80	0%	4	320	1%	0	0	0%	4	320	1%
10 x 10	83	8300	51%	81	8100	46%	83	8300	47%	247	24,700	48%	0	0	0%	247	24,700	41%
10 x 15	16	2400	15%	28	4200	24%	27	4050	23%	71	10,650	21%	0	0	0%	71	10,650	18%
10 x 20	0	0	0%	0	0	0%	0	0	0%	0	0	0%	41	8200	100%	41	8200	14%
TOTAL	226	16,195	100%	234	17,755	100%	236	17,825	100%	696	51,775	100%	41	8200	100%	737	59,975	100%

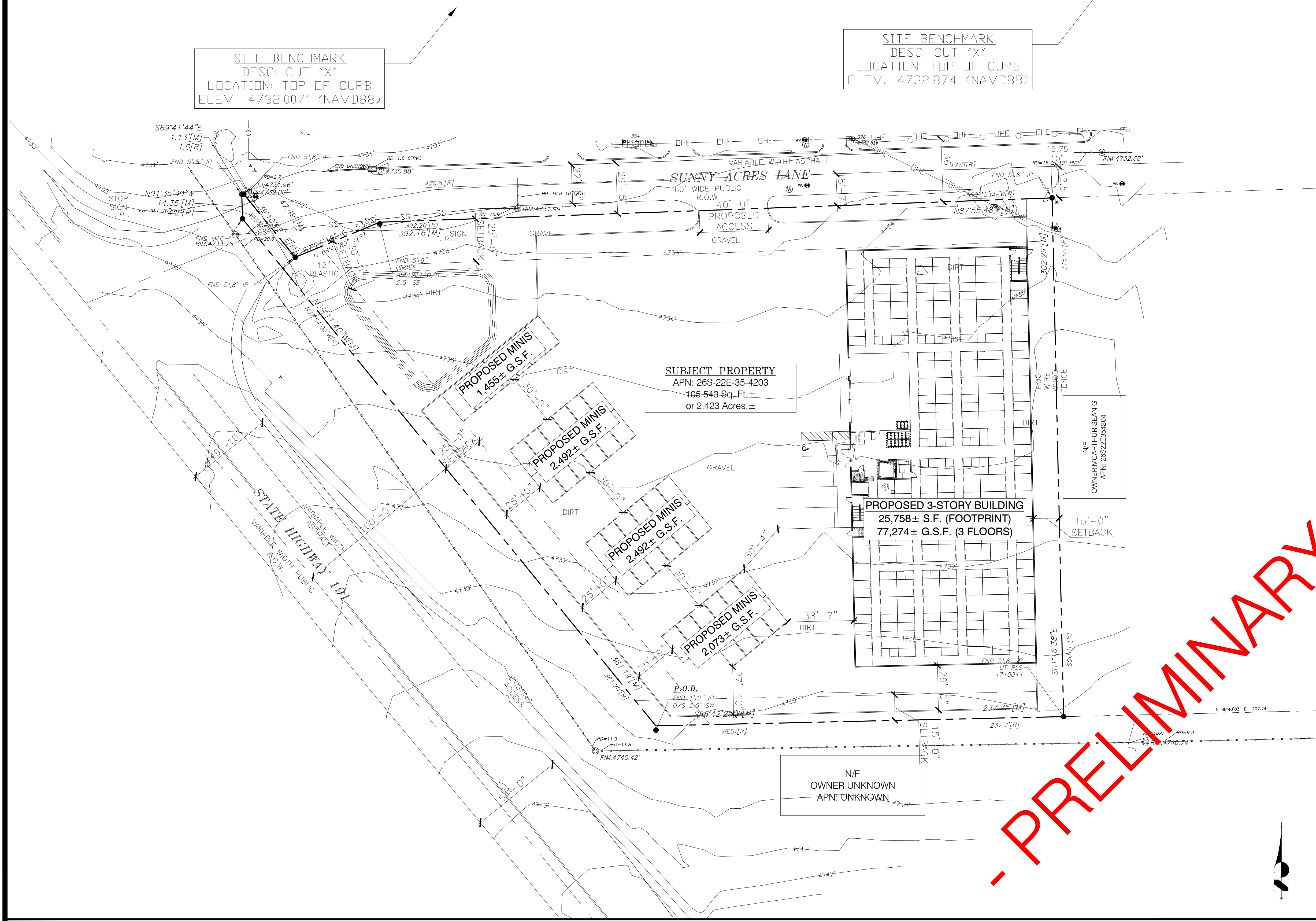
621 ADA LOCKERS REQUIRED/PROVIDED



SITE SCALE: NTS

SITE BENCHMARK
DESC: CUT "X"
LOCATION: TOP OF CURB
ELEV.: 4732.007' (NAVD88)

SITE BENCHMARK
DESC: CUT "X"
LOCATION: TOP OF CURB
ELEV.: 4732.874 (NAVD88)



ZONING INFORMATION

PROJECT NAME: U-HAUL MOVING & STORAGE OF MOAB
PROJECT ADDRESS: SUNNY ACRES LANE AND HWY 191 MOAB UT
MUNICIPALITY: SAN JUAN COUNTY
APN / ACRE / AREA: 26S22E354203 (2.4AC)

ZONE: HC (HIGHWAY COMMERCIAL) IN SPANISH VALLEY HWY COMMERCIAL OVERLAY ZONE/ IN THE AGRICULTURAL (A-1) ZONING DISTRICT IN THE 2011 CODE

ADJACENT ZONING:
N- HC (HIGHWAY COMMERCIAL) OVERLAY/ A-1
S- HC (HIGHWAY COMMERCIAL) OVERLAY/A-1
E- HC (HIGHWAY COMMERCIAL) OVERLAY-A-1
W- HF (HIGHWAY FLEX) OVERLAY/A-1

USES:
-VEHICLE RENTAL - PERMITTED (NEW AND USED AUTOMOBILE SALES AND RENTALS) IN OVERLAY
-SELF-STORAGE STORAGE CONDITIONAL USE IF BUILDINGS IN EXCESS OF 40,000 SF)
-ENCLOSED STORAGE, FLEX-OFFICE AND SIMILAR USES ARE PERMITTED IN OVERLAY

SETBACKS:
FRONTAGE: 25 FT
FRONT YARD: 25 FT
SIDE YARD: 15 FT ; EXCEPT CORNER YARDS 30 FT
REAR YARD: 25 FT

HEIGHT: 50 FT / 3 STORIES CUP REQUIRED

MAX LOT COVERAGE: NONE

PARKING: NOT LISTED

SHEET NOTES:

REVISIONS:

NO.	DATE	INITIALS	NOTES
1			
2			
3			
4			
5			
6			
7			
8			

PROFESSIONAL SEAL:

PRELIMINARY DOCUMENTS - NOT FOR CONSTRUCTION. FOR INFORMATION ONLY.

ARCHITECT LOGO:

AMERCO REAL ESTATE COMPANY

CONSTRUCTION DEPARTMENT
2727 NORTH CENTRAL AVENUE
PHOENIX, ARIZONA 85004
P: (602) 263-6502

SITE ADDRESS:
U-HAUL OF MOAB
HWY 191 & SUNNY ACRES LN
MOAB, UT 84532

SHEET CONTENTS:
PROPOSED SITE PLAN

720070

DRAWN: MM
CHECKED: NH
DATE: 09/10/2024
SP1

720070_A10.DWG