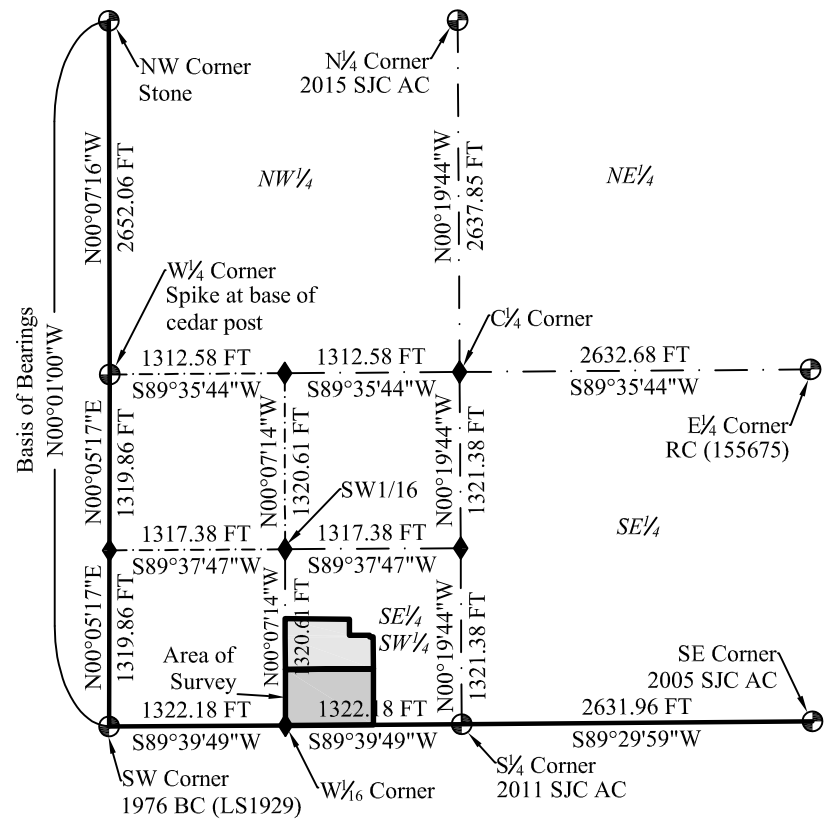


# Boundary Line Adjustment for San Juan County and San Juan Health Service District Within the SE<sup>1</sup>/<sub>4</sub> SW<sup>1</sup>/<sub>4</sub> of Section 25, T33S, R23E, SLB&M

**Section 25 Diagram**  
not to scale



**Narrative**

The purpose of this survey was to adjust the boundary of the San Juan County Tracts (T2-81, 218-297) and prepare the respective resultant descriptions. The basis of bearings for this survey is N00°01'00"W between the southwest corner and northwest corner of Section 25, Township 33 South, Range 23 East, SLB&M. This is in accordance with the bearing for the same line per the 1902 GLO survey, as well as other private surveys in the area.

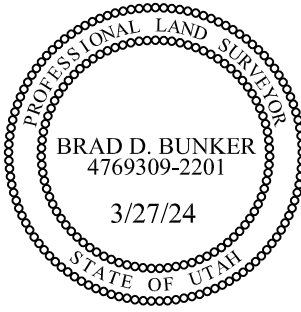
**Notes**

1. The Board of Education of the San Juan County School District Tract (989-809) was aligned with the north line of the NW<sup>1</sup>/<sub>4</sub> SE<sup>1</sup>/<sub>4</sub> SW<sup>1</sup>/<sub>4</sub> and the other parcels as called for in the record instrument (989-809). This placed the south line as shown hereon. Tract "A" was aligned with this School District Tract.
2. The San Juan County Tract (T2-81) was surveyed as an aliquot part (SW<sup>1</sup>/<sub>4</sub> SE<sup>1</sup>/<sub>4</sub> SW<sup>1</sup>/<sub>4</sub>). San Juan County Tract 218-297 had some gaps per the record description. At the advice of legal counsel, these gaps were closed with the creation of Tract "A" as shown hereon.

**Surveyor's Certificate**

I Brad D. Bunker, Professional Utah Land Surveyor, Number 4769309, hold a license in accordance with Title 58, Chapter 22, Professional Engineers and Land Surveyors Licensing Act. This survey has been completed under my direction for the property described hereon in accordance with section 17-23-17. I hereby certify all prepared descriptions and measurements are correct. Monuments will not be as part of this survey. I also certify that this record of survey has been prepared under my direction at the request of Clayton Holt.

3/27/24  
Brad D. Bunker Utah P.L.S. #4769309 Date

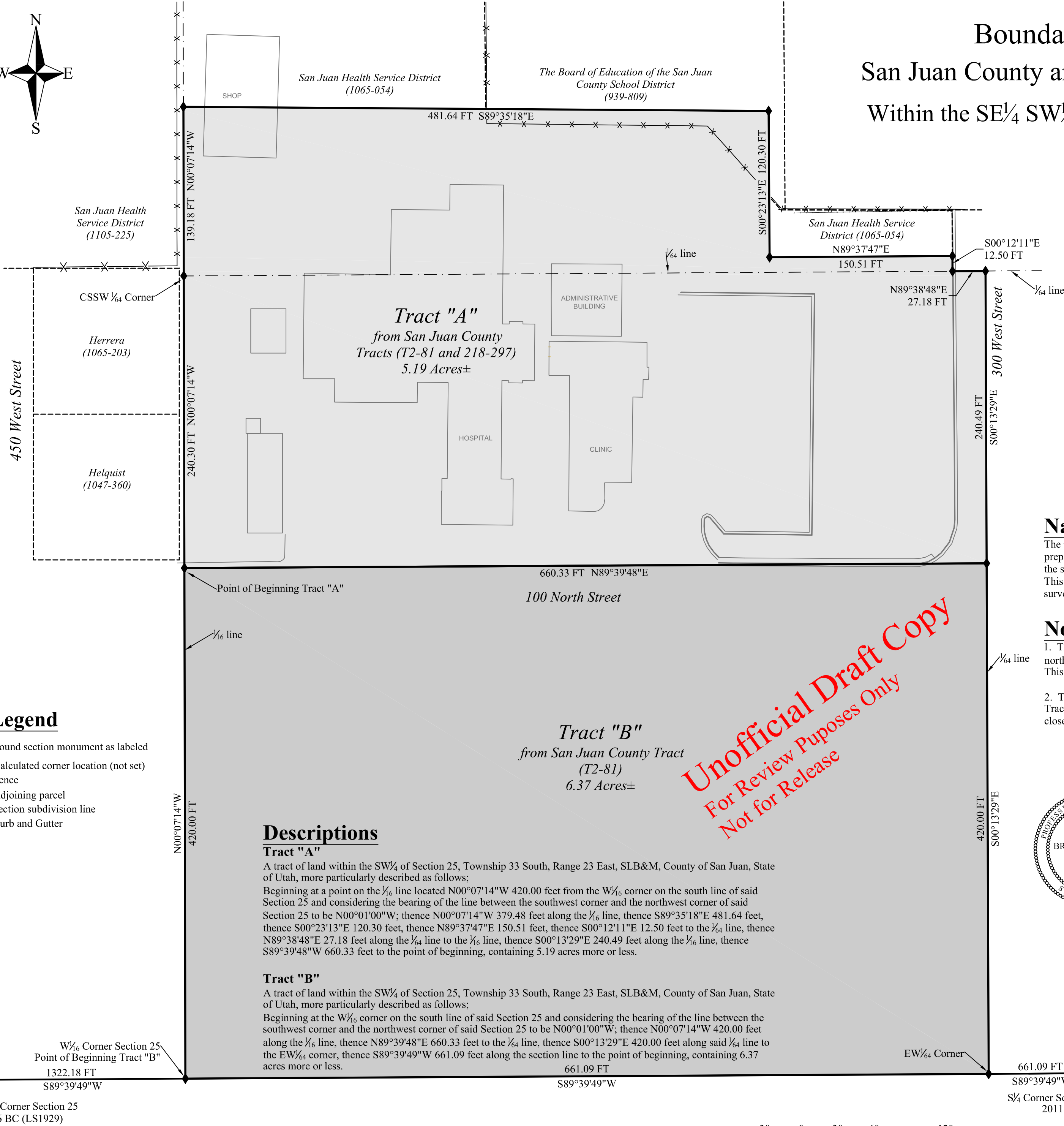
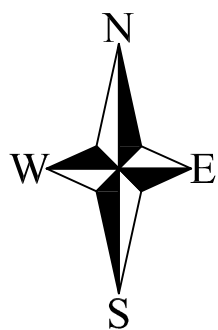


**Boundary Line Adjustment for  
San Juan County and San Juan Health Service District  
Within the SE<sup>1</sup>/<sub>4</sub> SW<sup>1</sup>/<sub>4</sub> of Section 25, T33S, R23E, SLB&M**

**Bunker Engineering, LLC**  
965 South Creek Road, Monticello, UT 84535  
P.O. Box 432, Monticello, UT 84535 (435) 459-9152

Date: March 2024 Drawn By: B.D. Bunker Scale: 1" = 60' Sheet: 1 of 1

Drawing Name: Survey Reference Number: BE1379



Unofficial Draft Copy  
For Review Purposes Only  
Not for Release

**Legend**

- ⊕ Found section monument as labeled
- ◆ Calculated corner location (not set)
- Fence
- - - Adjoining parcel
- · · Section subdivision line
- ▬ Curb and Gutter

**Descriptions**

**Tract "A"**  
A tract of land within the SW<sup>1</sup>/<sub>4</sub> of Section 25, Township 33 South, Range 23 East, SLB&M, County of San Juan, State of Utah, more particularly described as follows;  
Beginning at a point on the <sup>1</sup>/<sub>6</sub> line located N00°07'14"W 420.00 feet from the W<sup>1</sup>/<sub>6</sub> corner on the south line of said Section 25 and considering the bearing of the line between the southwest corner and the northwest corner of said Section 25 to be N00°01'00"W; thence N00°07'14"W 379.48 feet along the <sup>1</sup>/<sub>6</sub> line, thence S89°35'18"E 481.64 feet, thence S00°23'13"E 120.30 feet, thence N89°37'47"E 150.51 feet, thence S00°12'11"E 12.50 feet to the <sup>1</sup>/<sub>64</sub> line, thence N89°38'48"E 27.18 feet along the <sup>1</sup>/<sub>64</sub> line to the <sup>1</sup>/<sub>6</sub> line, thence S00°13'29"E 240.49 feet along the <sup>1</sup>/<sub>6</sub> line, thence S89°39'48"W 660.33 feet to the point of beginning, containing 5.19 acres more or less.

**Tract "B"**  
A tract of land within the SW<sup>1</sup>/<sub>4</sub> of Section 25, Township 33 South, Range 23 East, SLB&M, County of San Juan, State of Utah, more particularly described as follows;  
Beginning at the W<sup>1</sup>/<sub>6</sub> corner on the south line of said Section 25 and considering the bearing of the line between the southwest corner and the northwest corner of said Section 25 to be N00°01'00"W; thence N00°07'14"W 420.00 feet along the <sup>1</sup>/<sub>6</sub> line, thence N89°39'48"E 660.33 feet to the <sup>1</sup>/<sub>64</sub> line, thence S00°13'29"E 420.00 feet along said <sup>1</sup>/<sub>64</sub> line to the EW<sup>1</sup>/<sub>64</sub> corner, thence S89°39'49"W 661.09 feet along the section line to the point of beginning, containing 6.37 acres more or less.

