



## Local Authority Consent for a Retail Alcohol License

**License Type:** Restaurant - Full Service

The local business licensing authority gives written consent to the Alcoholic Beverage Services Commission to consider the issuance of an on-premise retail alcohol license for a person to store, sell, offer for sale, furnish, or allow the consumption of an alcohol product on the premises of the applicant under the following authorities: Utah Code Sections 32B-1-202, 32B-5-201, 32B-5-203, 32B-5-205, and 32B-5-206.

### San Juan County

hereby grants its consent for the issuance of a license to:

**Business Name (DBA):** Halls Crossing Marina Snack Bar

**Entity Name (or owner's name if sole proprietor):** Aramark Sports & Entertainment Services, LLC

**Physical Location Street Address:** 1 W HWY 276

**City:** Halls Crossing      **Zip Code:** 84533

**Authorized Licensing Authority Signature:** \_\_\_\_\_

**Printed Name:** \_\_\_\_\_ **Title:** \_\_\_\_\_ **Date:** \_\_\_\_\_

This local consent document must be submitted to the DABS by the applicant as part of a complete application.

MECHANICAL, ELECTRICAL, PLUMBING AND FIRE PROTECTION

FIRST FLOOR PLAN, DAMBROCK AND ASSOCIATES

# Aramark Halls Crossing Convenience Store

Page Number  
Revision  
Date

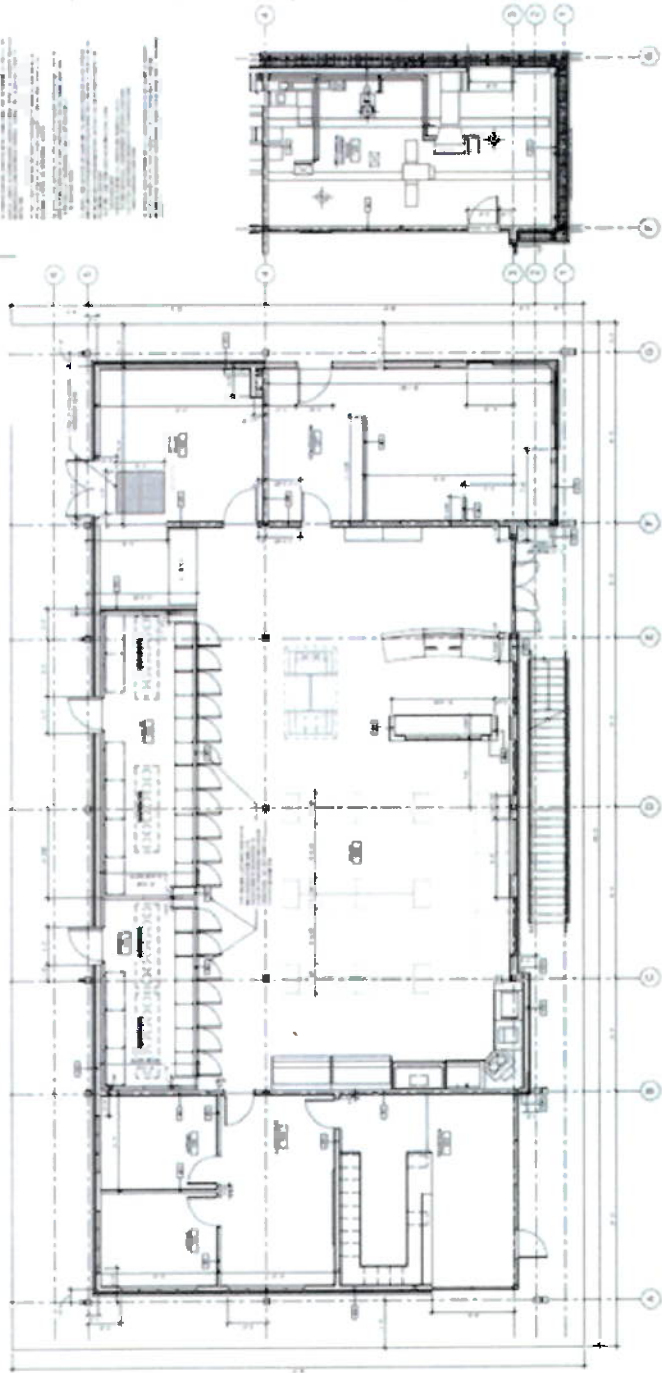


**GENERAL NOTES:**

1. ALL WORK SHALL BE IN ACCORDANCE WITH THE 2018 INTERNATIONAL MECHANICAL, ELECTRICAL, PLUMBING AND FIRE PROTECTION CODES, AS APPLICABLE.
2. ALL WORK SHALL BE IN ACCORDANCE WITH THE 2018 INTERNATIONAL BUILDING CODE, AS APPLICABLE.
3. ALL WORK SHALL BE IN ACCORDANCE WITH THE 2018 INTERNATIONAL ENERGY CONSERVATION CODE, AS APPLICABLE.
4. ALL WORK SHALL BE IN ACCORDANCE WITH THE 2018 INTERNATIONAL FIRE AND SAFETY CODE, AS APPLICABLE.
5. ALL WORK SHALL BE IN ACCORDANCE WITH THE 2018 INTERNATIONAL SWEET'S ELECTRICAL CODE, AS APPLICABLE.
6. ALL WORK SHALL BE IN ACCORDANCE WITH THE 2018 INTERNATIONAL PLUMBING AND MECHANICAL CODE, AS APPLICABLE.
7. ALL WORK SHALL BE IN ACCORDANCE WITH THE 2018 INTERNATIONAL FIRE AND SAFETY CODE, AS APPLICABLE.
8. ALL WORK SHALL BE IN ACCORDANCE WITH THE 2018 INTERNATIONAL SWEET'S ELECTRICAL CODE, AS APPLICABLE.
9. ALL WORK SHALL BE IN ACCORDANCE WITH THE 2018 INTERNATIONAL PLUMBING AND MECHANICAL CODE, AS APPLICABLE.
10. ALL WORK SHALL BE IN ACCORDANCE WITH THE 2018 INTERNATIONAL FIRE AND SAFETY CODE, AS APPLICABLE.
11. ALL WORK SHALL BE IN ACCORDANCE WITH THE 2018 INTERNATIONAL SWEET'S ELECTRICAL CODE, AS APPLICABLE.
12. ALL WORK SHALL BE IN ACCORDANCE WITH THE 2018 INTERNATIONAL PLUMBING AND MECHANICAL CODE, AS APPLICABLE.
13. ALL WORK SHALL BE IN ACCORDANCE WITH THE 2018 INTERNATIONAL FIRE AND SAFETY CODE, AS APPLICABLE.
14. ALL WORK SHALL BE IN ACCORDANCE WITH THE 2018 INTERNATIONAL SWEET'S ELECTRICAL CODE, AS APPLICABLE.
15. ALL WORK SHALL BE IN ACCORDANCE WITH THE 2018 INTERNATIONAL PLUMBING AND MECHANICAL CODE, AS APPLICABLE.
16. ALL WORK SHALL BE IN ACCORDANCE WITH THE 2018 INTERNATIONAL FIRE AND SAFETY CODE, AS APPLICABLE.
17. ALL WORK SHALL BE IN ACCORDANCE WITH THE 2018 INTERNATIONAL SWEET'S ELECTRICAL CODE, AS APPLICABLE.
18. ALL WORK SHALL BE IN ACCORDANCE WITH THE 2018 INTERNATIONAL PLUMBING AND MECHANICAL CODE, AS APPLICABLE.
19. ALL WORK SHALL BE IN ACCORDANCE WITH THE 2018 INTERNATIONAL FIRE AND SAFETY CODE, AS APPLICABLE.
20. ALL WORK SHALL BE IN ACCORDANCE WITH THE 2018 INTERNATIONAL SWEET'S ELECTRICAL CODE, AS APPLICABLE.

**MECHANICAL NOTES:**

1. ALL MECHANICAL WORK SHALL BE IN ACCORDANCE WITH THE 2018 INTERNATIONAL MECHANICAL CODE, AS APPLICABLE.
2. ALL MECHANICAL WORK SHALL BE IN ACCORDANCE WITH THE 2018 INTERNATIONAL ENERGY CONSERVATION CODE, AS APPLICABLE.
3. ALL MECHANICAL WORK SHALL BE IN ACCORDANCE WITH THE 2018 INTERNATIONAL FIRE AND SAFETY CODE, AS APPLICABLE.
4. ALL MECHANICAL WORK SHALL BE IN ACCORDANCE WITH THE 2018 INTERNATIONAL SWEET'S ELECTRICAL CODE, AS APPLICABLE.
5. ALL MECHANICAL WORK SHALL BE IN ACCORDANCE WITH THE 2018 INTERNATIONAL PLUMBING AND MECHANICAL CODE, AS APPLICABLE.
6. ALL MECHANICAL WORK SHALL BE IN ACCORDANCE WITH THE 2018 INTERNATIONAL FIRE AND SAFETY CODE, AS APPLICABLE.
7. ALL MECHANICAL WORK SHALL BE IN ACCORDANCE WITH THE 2018 INTERNATIONAL SWEET'S ELECTRICAL CODE, AS APPLICABLE.
8. ALL MECHANICAL WORK SHALL BE IN ACCORDANCE WITH THE 2018 INTERNATIONAL PLUMBING AND MECHANICAL CODE, AS APPLICABLE.
9. ALL MECHANICAL WORK SHALL BE IN ACCORDANCE WITH THE 2018 INTERNATIONAL FIRE AND SAFETY CODE, AS APPLICABLE.
10. ALL MECHANICAL WORK SHALL BE IN ACCORDANCE WITH THE 2018 INTERNATIONAL SWEET'S ELECTRICAL CODE, AS APPLICABLE.
11. ALL MECHANICAL WORK SHALL BE IN ACCORDANCE WITH THE 2018 INTERNATIONAL PLUMBING AND MECHANICAL CODE, AS APPLICABLE.
12. ALL MECHANICAL WORK SHALL BE IN ACCORDANCE WITH THE 2018 INTERNATIONAL FIRE AND SAFETY CODE, AS APPLICABLE.
13. ALL MECHANICAL WORK SHALL BE IN ACCORDANCE WITH THE 2018 INTERNATIONAL SWEET'S ELECTRICAL CODE, AS APPLICABLE.
14. ALL MECHANICAL WORK SHALL BE IN ACCORDANCE WITH THE 2018 INTERNATIONAL PLUMBING AND MECHANICAL CODE, AS APPLICABLE.
15. ALL MECHANICAL WORK SHALL BE IN ACCORDANCE WITH THE 2018 INTERNATIONAL FIRE AND SAFETY CODE, AS APPLICABLE.
16. ALL MECHANICAL WORK SHALL BE IN ACCORDANCE WITH THE 2018 INTERNATIONAL SWEET'S ELECTRICAL CODE, AS APPLICABLE.
17. ALL MECHANICAL WORK SHALL BE IN ACCORDANCE WITH THE 2018 INTERNATIONAL PLUMBING AND MECHANICAL CODE, AS APPLICABLE.
18. ALL MECHANICAL WORK SHALL BE IN ACCORDANCE WITH THE 2018 INTERNATIONAL FIRE AND SAFETY CODE, AS APPLICABLE.
19. ALL MECHANICAL WORK SHALL BE IN ACCORDANCE WITH THE 2018 INTERNATIONAL SWEET'S ELECTRICAL CODE, AS APPLICABLE.
20. ALL MECHANICAL WORK SHALL BE IN ACCORDANCE WITH THE 2018 INTERNATIONAL PLUMBING AND MECHANICAL CODE, AS APPLICABLE.



Navigation icons: Home, Back, Forward, Search, Print, Zoom In, Zoom Out, Rotate, and other standard CAD software controls.