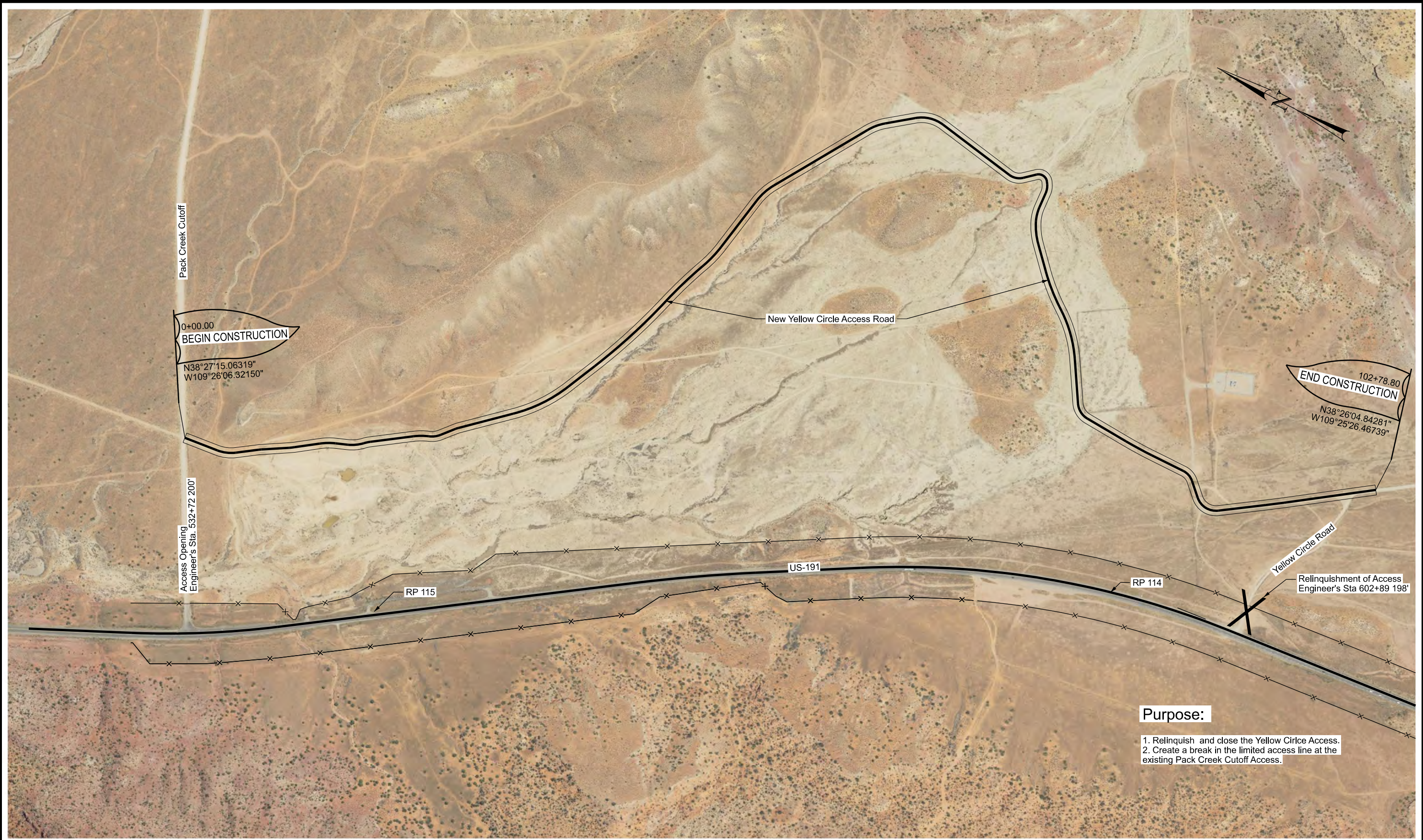


DGN File: r:\work\hwy\_bentlev.com\pub\boxes\01\Documents\DOT\Projects\Revision 4\Projects\Survey 2025\_Connect\Survey\ZT\K3\_ROW\_SURVEY\US-191\_SPANISH\_VALLEY\_MP-114\_YELLOW\_CIRCLE\_ACCESS\Yellow\_Circle\_Access\_Exhibit.dgn  
4-MAY-2026 PIN:



Pack Creek Cutoff

0+00.00  
BEGIN CONSTRUCTION  
N38°27'15.06319"  
W109°26'06.32150"

New Yellow Circle Access Road

102+78.80  
END CONSTRUCTION  
N38°26'04.84281"  
W109°25'26.46739"

Access Opening  
Engineer's Sta. 532+72.200'

RP 115

US-191

RP 114

Yellow Circle Road

Relinquishment of Access  
Engineer's Sta 602+89 198'

**Purpose:**

- 1. Relinquish and close the Yellow Circle Access.
- 2. Create a break in the limited access line at the existing Pack Creek Cutoff Access.

# US-191 MP 113.75 - 115.25 Access Changes

PROJECT NO. F-013-1()	PIN:	SHEET NO.
		EX-01