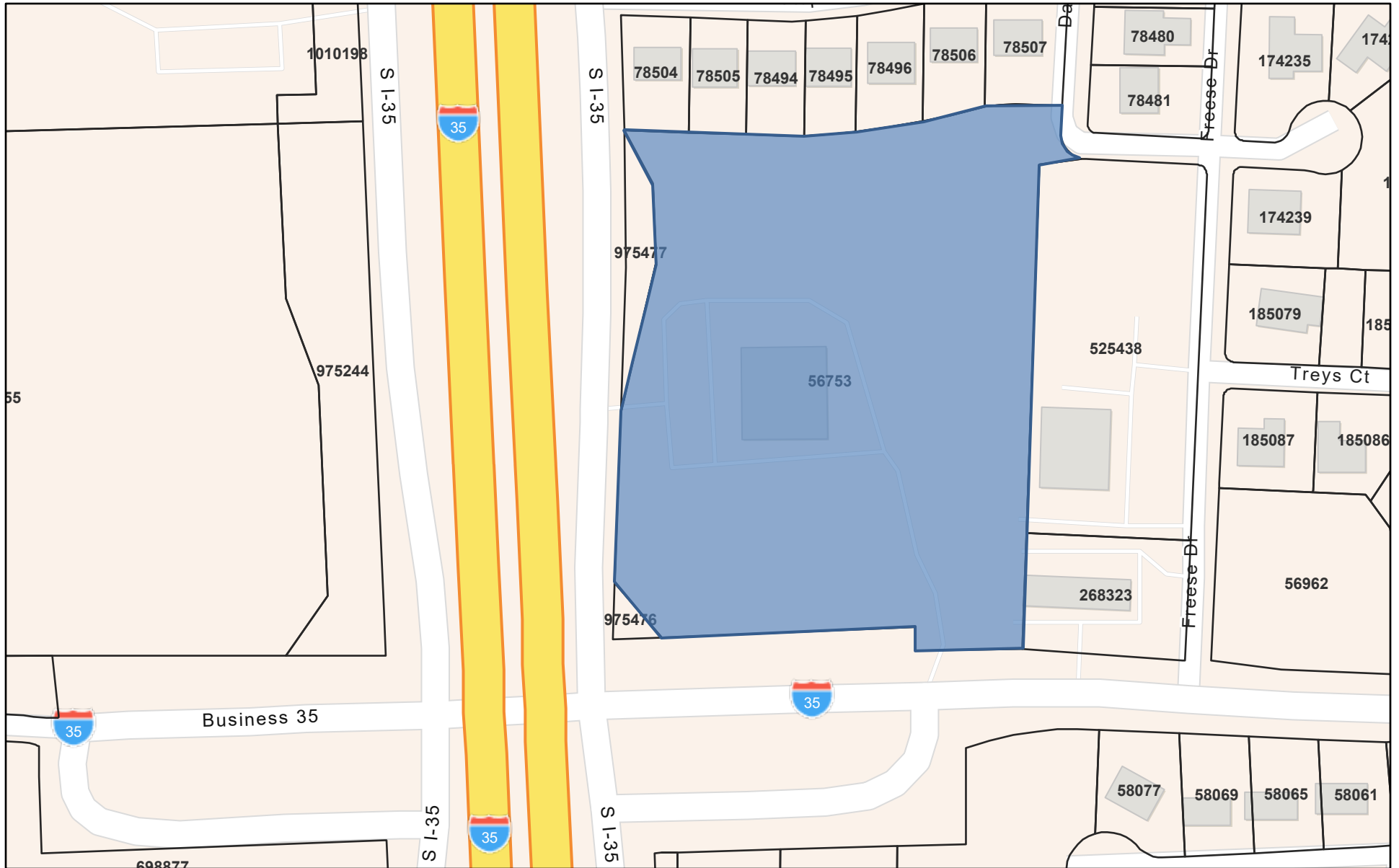


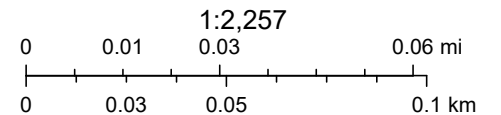
# Denton CAD Web Map



1/3/2024, 12:26:22 PM

 Parcels

## 23SANZON-0049 Duncan Retail Addition



Esri Community Maps Contributors, Texas Parks & Wildlife, © OpenStreetMap, Microsoft, Esri, HERE, Garmin, SafeGraph,

Denton County Appraisal District, BIS Consulting - [www.bisconsulting.com](http://www.bisconsulting.com)

Disclaimer: This product is for informational purposes only and has not been prepared for or be suitable for legal, engineering, or surveying purposes. It does not represent an on-the-ground survey and represents only the approximate relative location of boundaries.