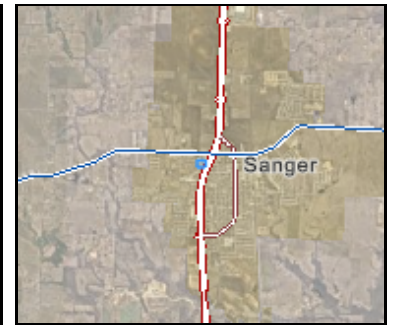
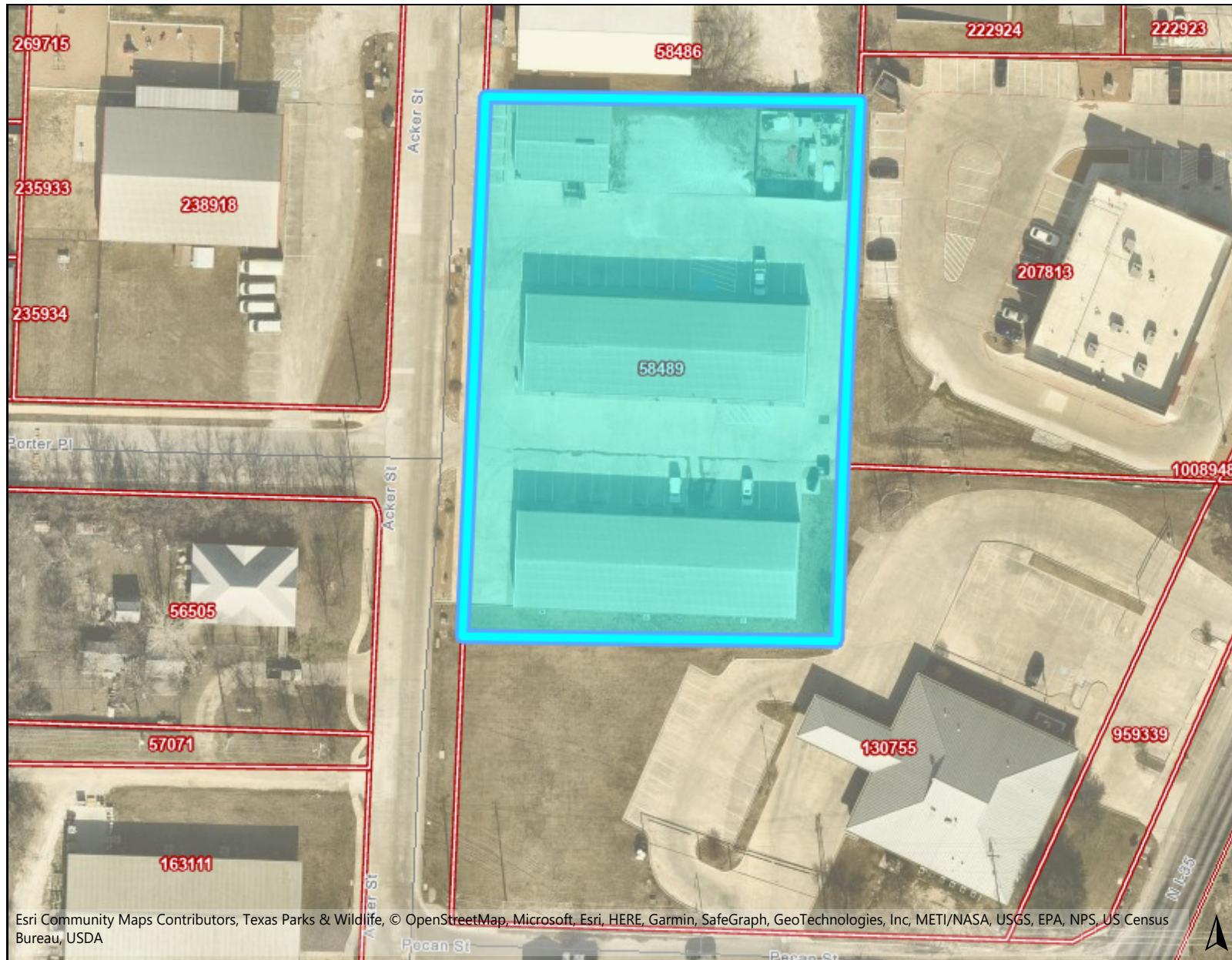


Denton County Landmark Map



Legend

- 911 Addresses
- Development Permits
- ▭ Parcels
- Floodplain**
 - Cross Section Location
 - Base Flood Elevation
 - ▭ FEMA Floodway
 - ▭ Flood Grid
 - ▭ FEMA 100yr Flood Zone A
 - ▭ FEMA 100yr Flood Zone AE
 - ▭ FEMA 500yr Flood Zone
 - Levee Protected

Notes

Esri Community Maps Contributors, Texas Parks & Wildlife, © OpenStreetMap, Microsoft, Esri, HERE, Garmin, SafeGraph, GeoTechnologies, Inc, METI/NASA, USGS, EPA, NPS, US Census Bureau, USDA



0 100 200
ft

<https://gis.dentoncounty.gov>

2/24/2023 2:17:19 PM

This product is for informational purposes and may not have been prepared for or be suitable for legal, engineering, or surveying purposes. It does not represent an on-the-ground survey and represents only the approximate relative location of property boundaries.

Denton County does not guarantee the correctness or accuracy of any features on this product and assumes no responsibility in connection therewith. This product may be revised at any time without notification to any user.