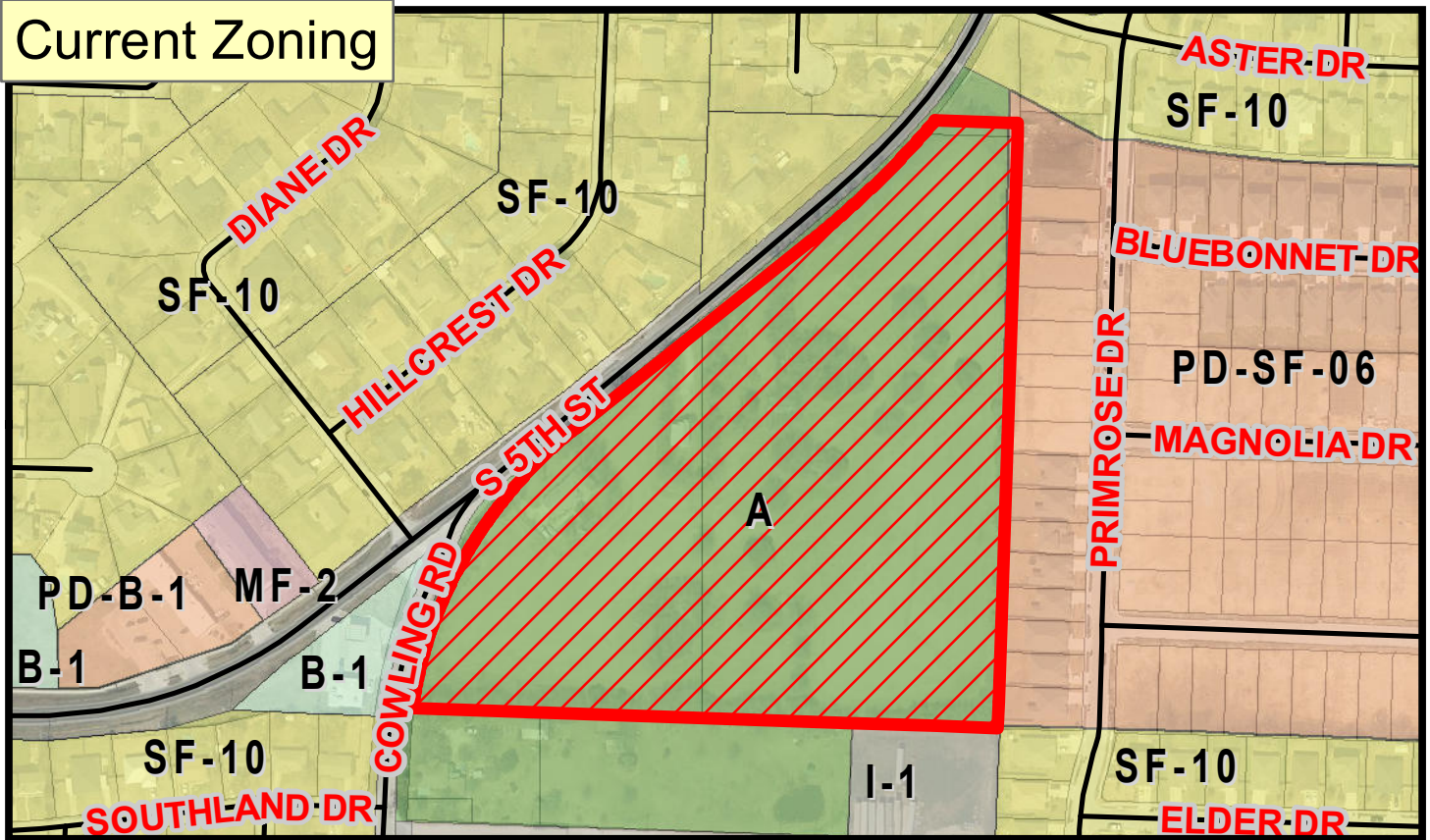
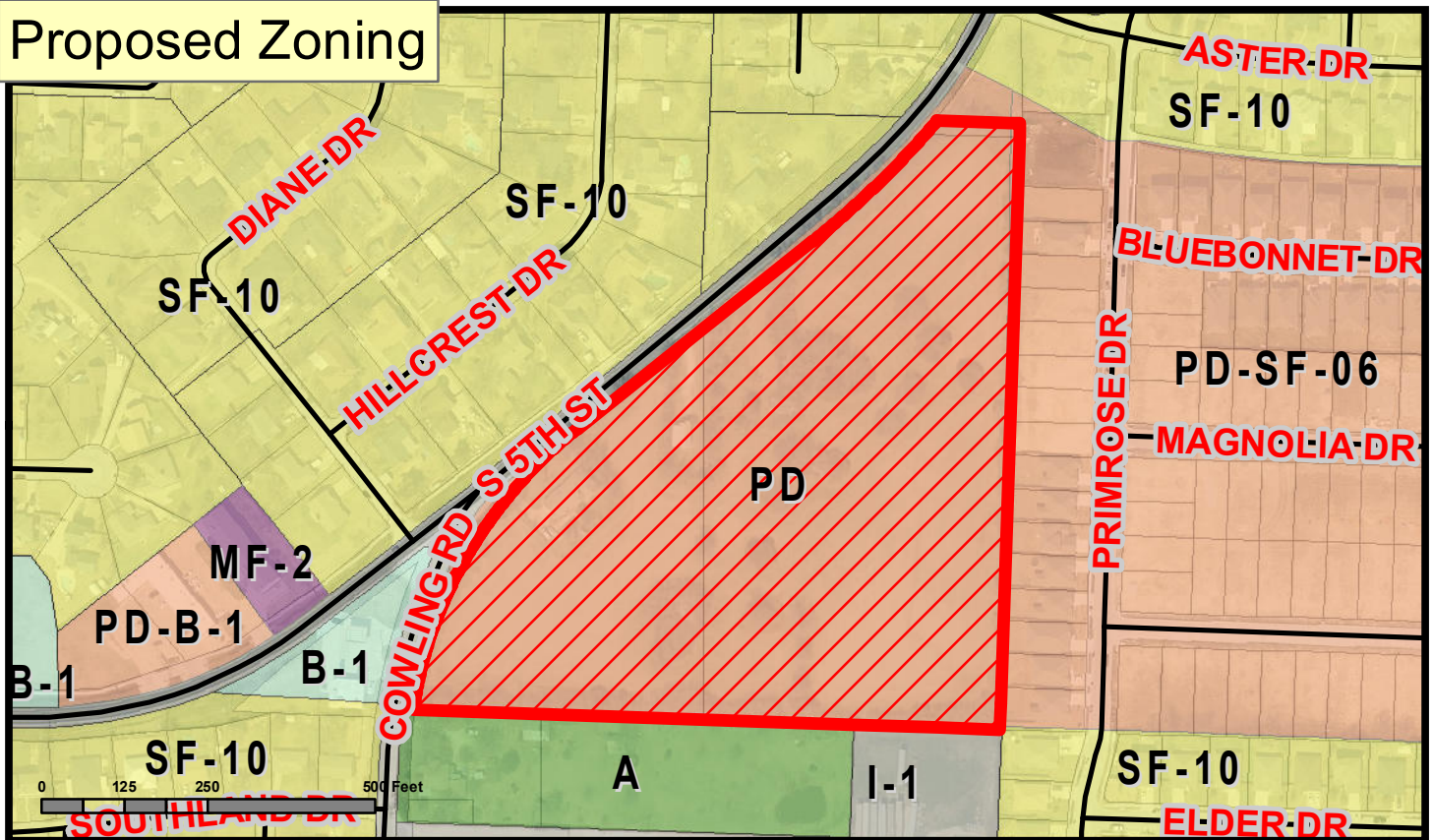


# Current Zoning



# Proposed Zoning



Location: Sanger Preserve - 801, 803, 805 S. 5th St.  
 PD Zoning Change (MF-2; B-2)  
 Project: 22SANZON-0035

 City Limits  Exhibits

DISCLAIMER:  
 This map was generated by GIS data provided by the Sanger GIS Department. The City of Sanger does not guarantee the correctness or accuracy of any features on this map. These map products are for illustration purposes only and are not suitable for site-specific decision making. GIS data is subject to constant changes, and may not be complete, accurate or current.

