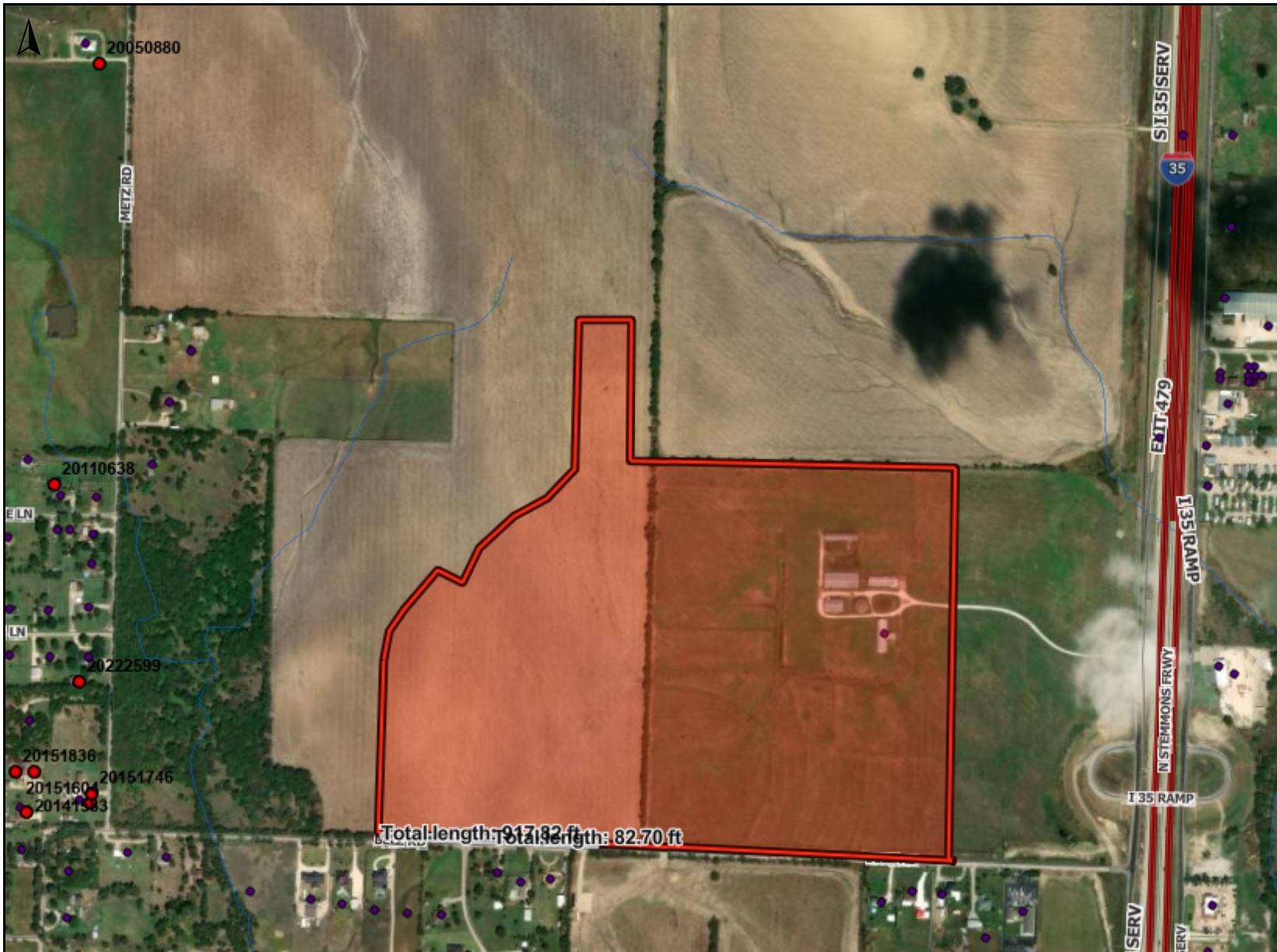


Elada Phase 1A

Legend

- Planning and Zoning
 - Planning and Zoning
 - ▲ WATER WELL
 - PERMITS
- Public Safety
 - Addresses 911
- Lakes and Streams
 - Lakes
 - Streams



Total length: 917.82 ft
Width: 82.70 ft

Notes:

This product is for informational purposes and may not have been prepared for or be suitable for legal, engineering, or surveying purposes. It does not represent an on-the-ground survey and represents only the approximate relative location of property boundaries.

Denton County does not guarantee the correctness or accuracy of any features on this product and assumes no responsibility in connection therewith. This product may be revised at any time without notification to any user.



<https://www.dentoncounty.gov/1147/Geographic-Information-Systems-GIS>
4/7/2026 9:07:30 AM