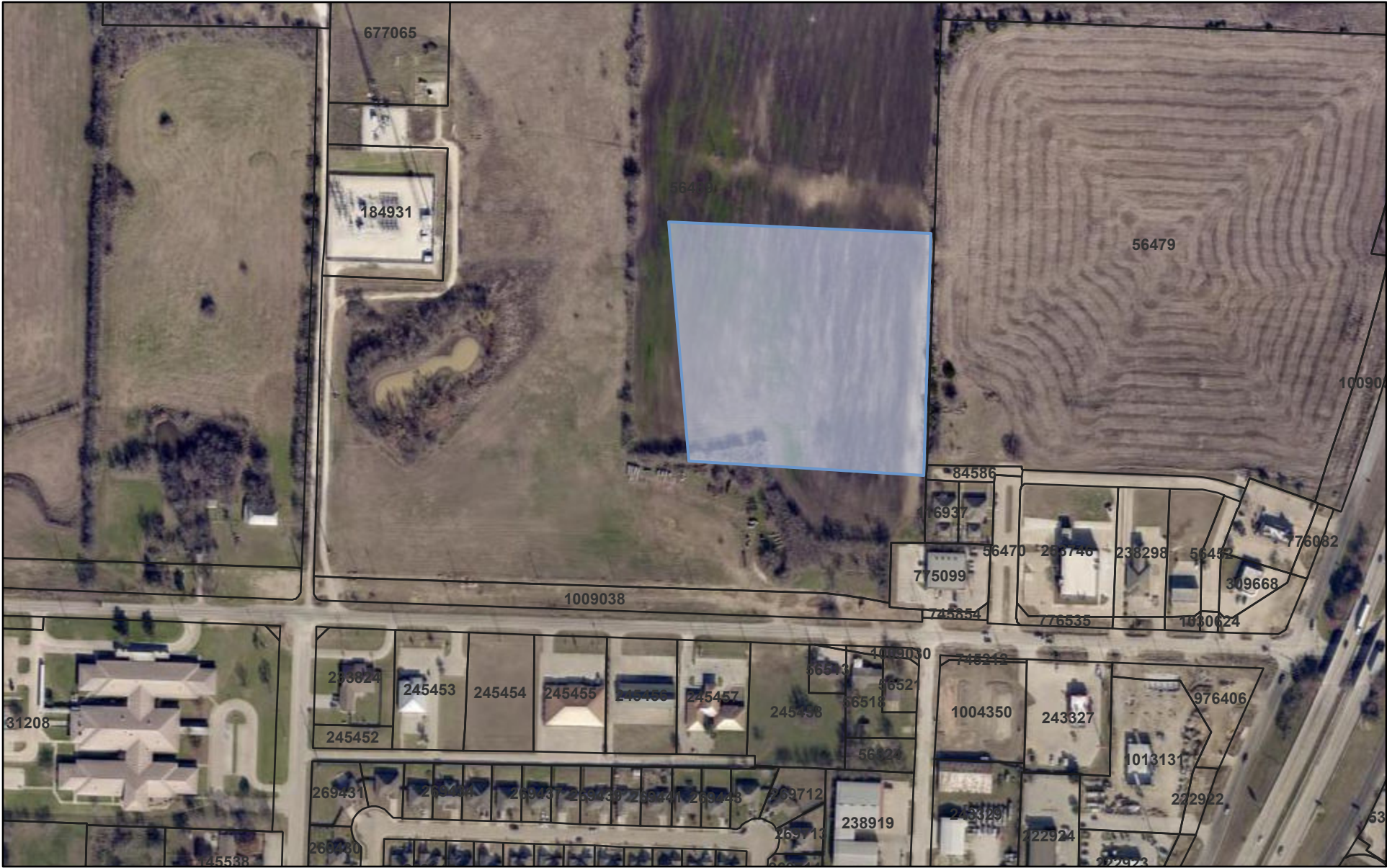




# Denton CAD Web Map

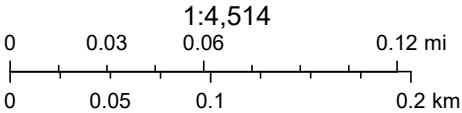


7/17/2024, 7:46:09 AM

 Parcels  
 County



Location; Belz Road Addition Lot 4  
Parking Lot Variance  
Project: 24SANZON-0018



© OpenStreetMap (and) contributors, CC-BY-SA, Texas Department of Transportation

Denton County Appraisal District, BIS Consulting - [www.bisconsulting.com](http://www.bisconsulting.com)

Disclaimer: This product is for informational purposes only and has not been prepared for or be suitable for legal, engineering, or surveying purposes. It does not represent an on-the-ground survey and represents only the approximate relative location of boundaries.