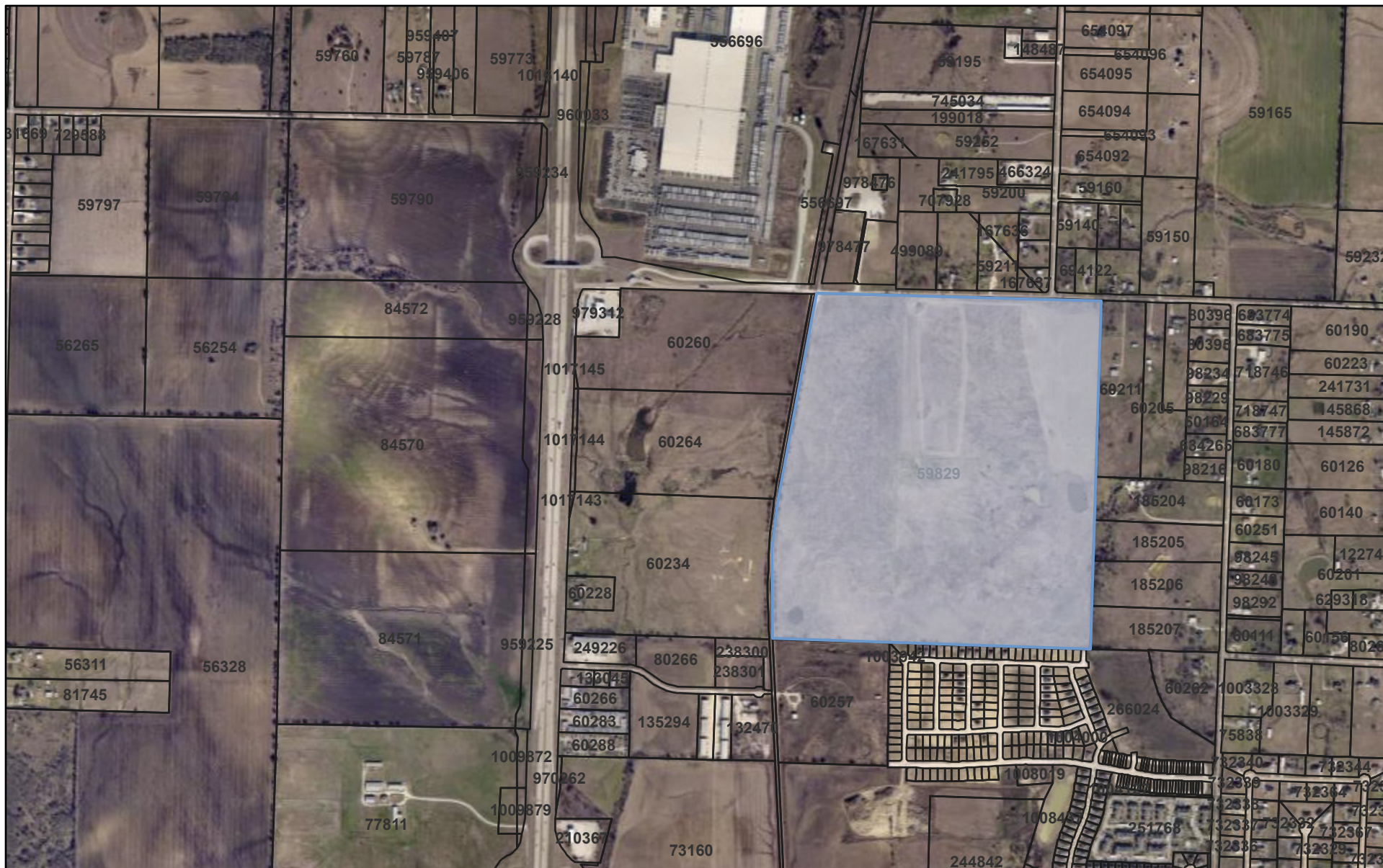




Denton CAD Web Map



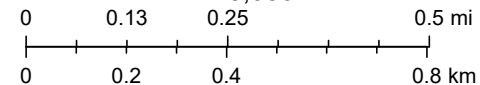
10/24/2024, 8:24:32 AM

-  Parcels
-  County



Lois Road Planned Development
 24SANZON-0034
 Zoning Change

1:18,056



© OpenStreetMap (and) contributors, CC-BY-SA, Texas Department of Transportation

Denton County Appraisal District, BIS Consulting - www.bisconsulting.com

Disclaimer: This product is for informational purposes only and has not been prepared for or be suitable for legal, engineering, or surveying purposes. It does not represent an on-the-ground survey and represents only the approximate relative location of boundaries.