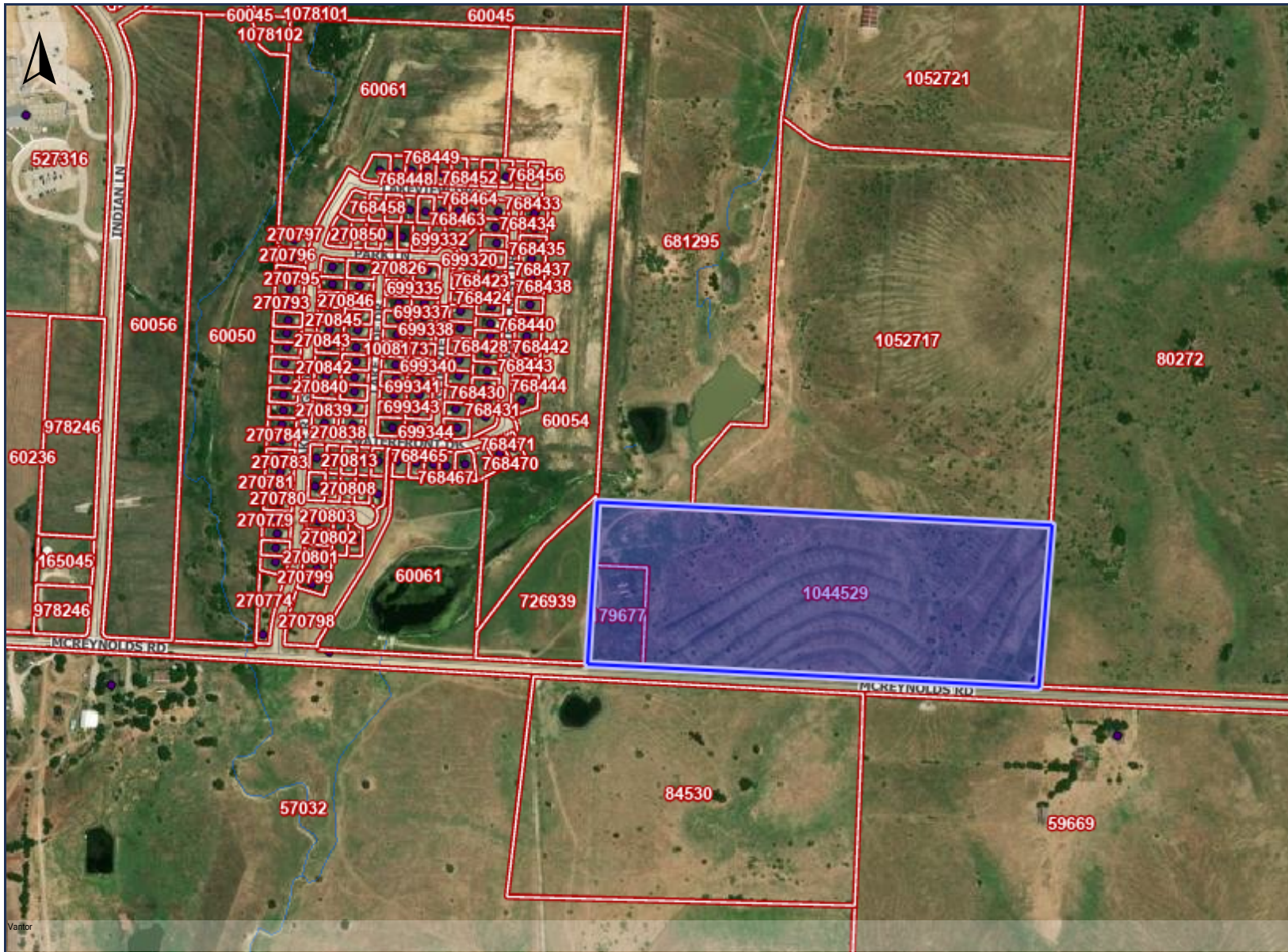


Denton County Landmark Map



Legend

DCAD (Property Lines)

Parcels

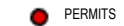


Planning and Zoning

Planning and Zoning



WATER WELL



PERMITS

Aubrey Outer Boundary



Public Safety

Addresses 911



Lakes and Streams

Streams



0 500 1000
ft

<https://www.dentoncounty.gov/1147/Geographic-Information-Systems-GIS>

11/19/2025 4:25:28 PM

Notes:

This product is for informational purposes and may not have been prepared for or be suitable for legal, engineering, or surveying purposes. It does not represent an on-the-ground survey and represents only the approximate relative location of property boundaries.

Denton County does not guarantee the correctness or accuracy of any features on this product and assumes no responsibility in connection therewith. This product may be revised at any time without notification to any user.

