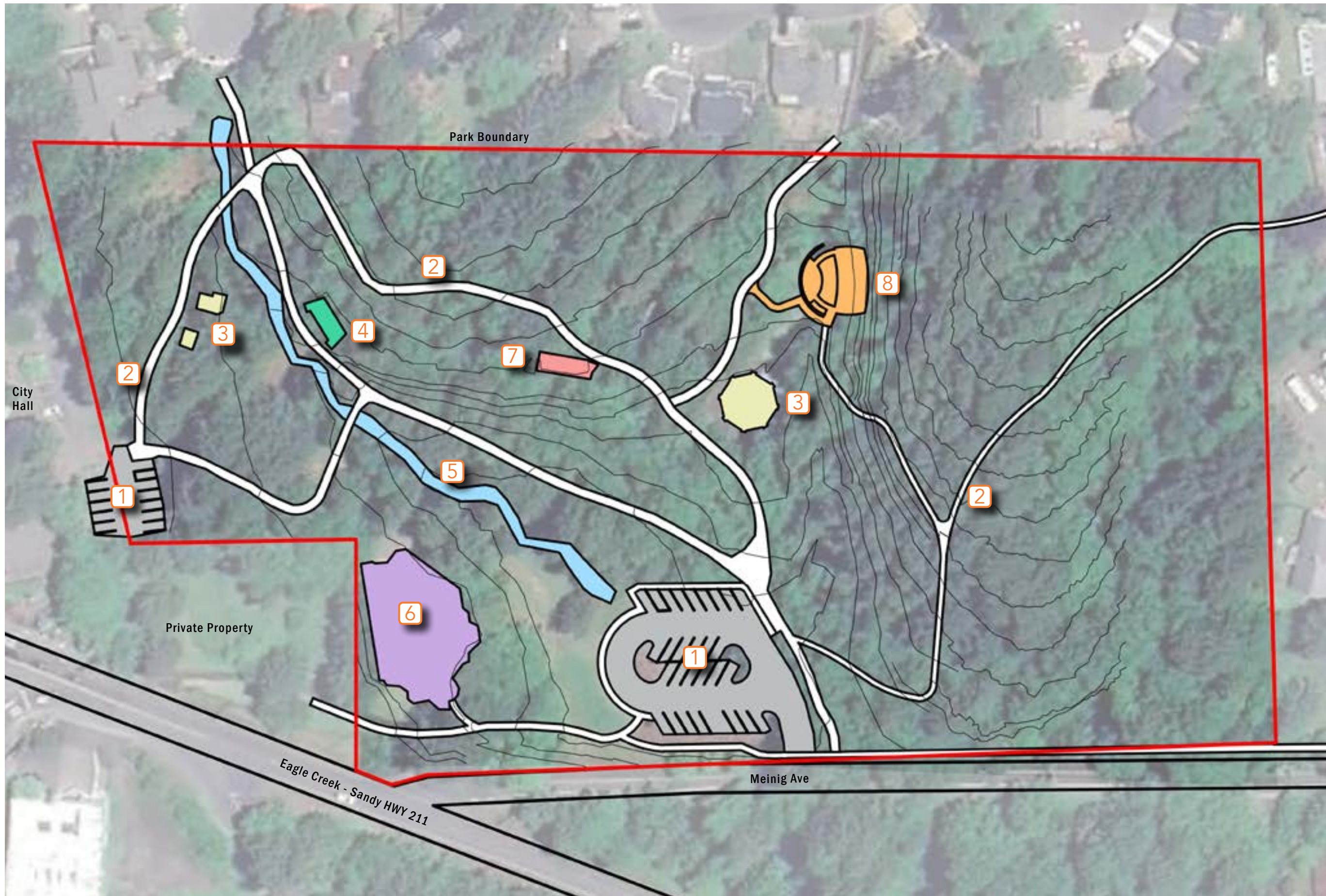




MEINIG MEMORIAL PARK

**City Council
July 15, 2024**



PARK AMENITIES

- 1 Parking Lot
- 2 Park Pathway System
- 3 Picnic Shelters
- 4 Main Stage
- 5 No Name Creek
- 6 Fantasy Forest Playground
- 7 Restrooms
- 8 Amphitheater

Existing Conditions

MEINIG MEMORIAL PARK 07.15.24



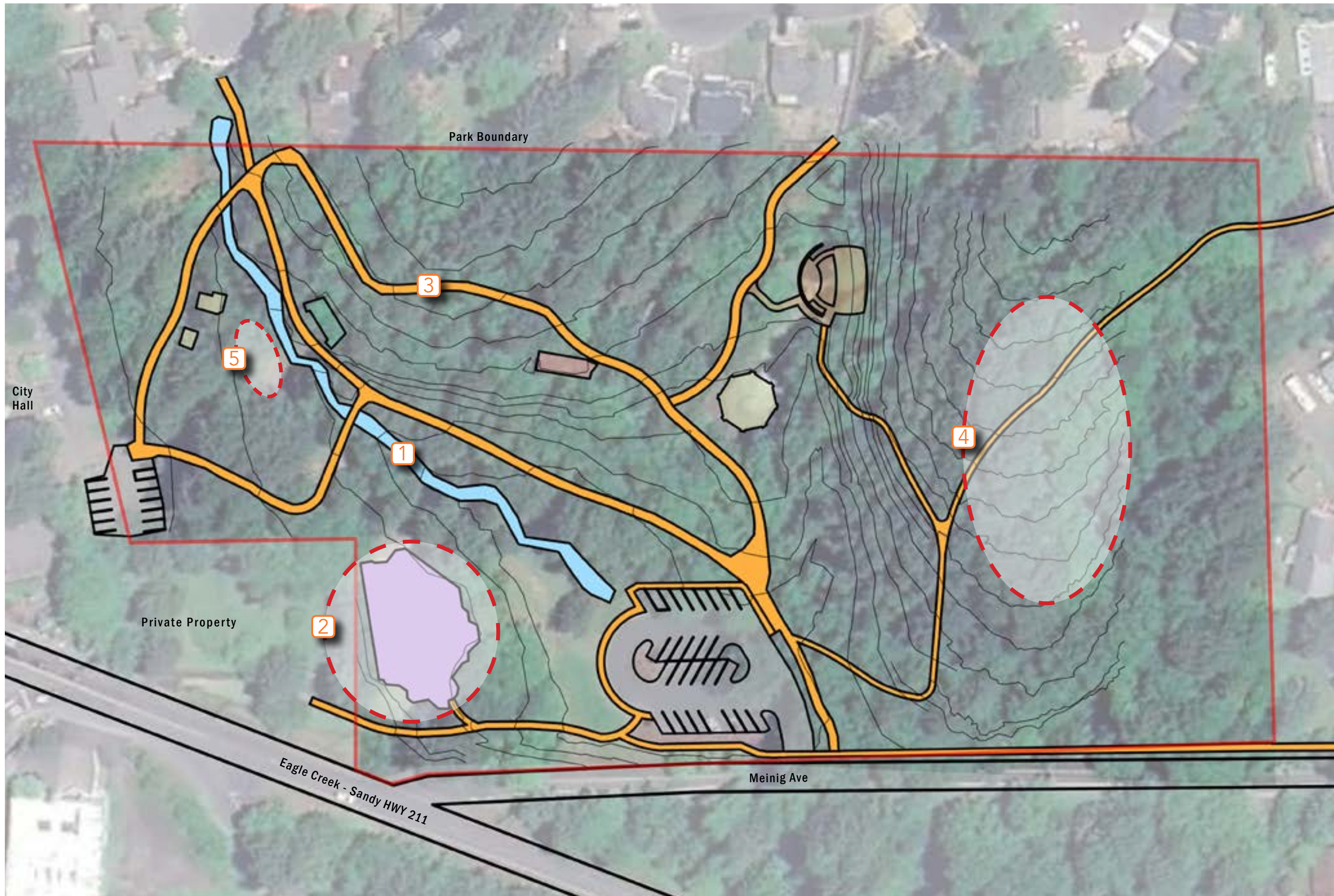
lango hansen LANDSCAPE ARCHITECTS

PROJECT BACKGROUND

The City of Sandy Parks and Trails Master Plan (PTMP) included several park improvements for Meinig Memorial Park.

- Trail and pathway renovation to meet ADA accessibility and provide for ongoing maintenance and upkeep
- Delineating circulation
- Improve structures and event space
- The redevelopment of Fantasy Forest playground
- Restoration of No Name Creek and neighboring slopes
- Provide park signage, including directional markers, entry signs, and interpretive signage





AREAS OF FOCUS

- 1 No Name Creek
- 2 Fantasy Forest Playground
- 3 Park Pathway System
- 4 Off Leash Dog Park
- 5 Hillside Seating

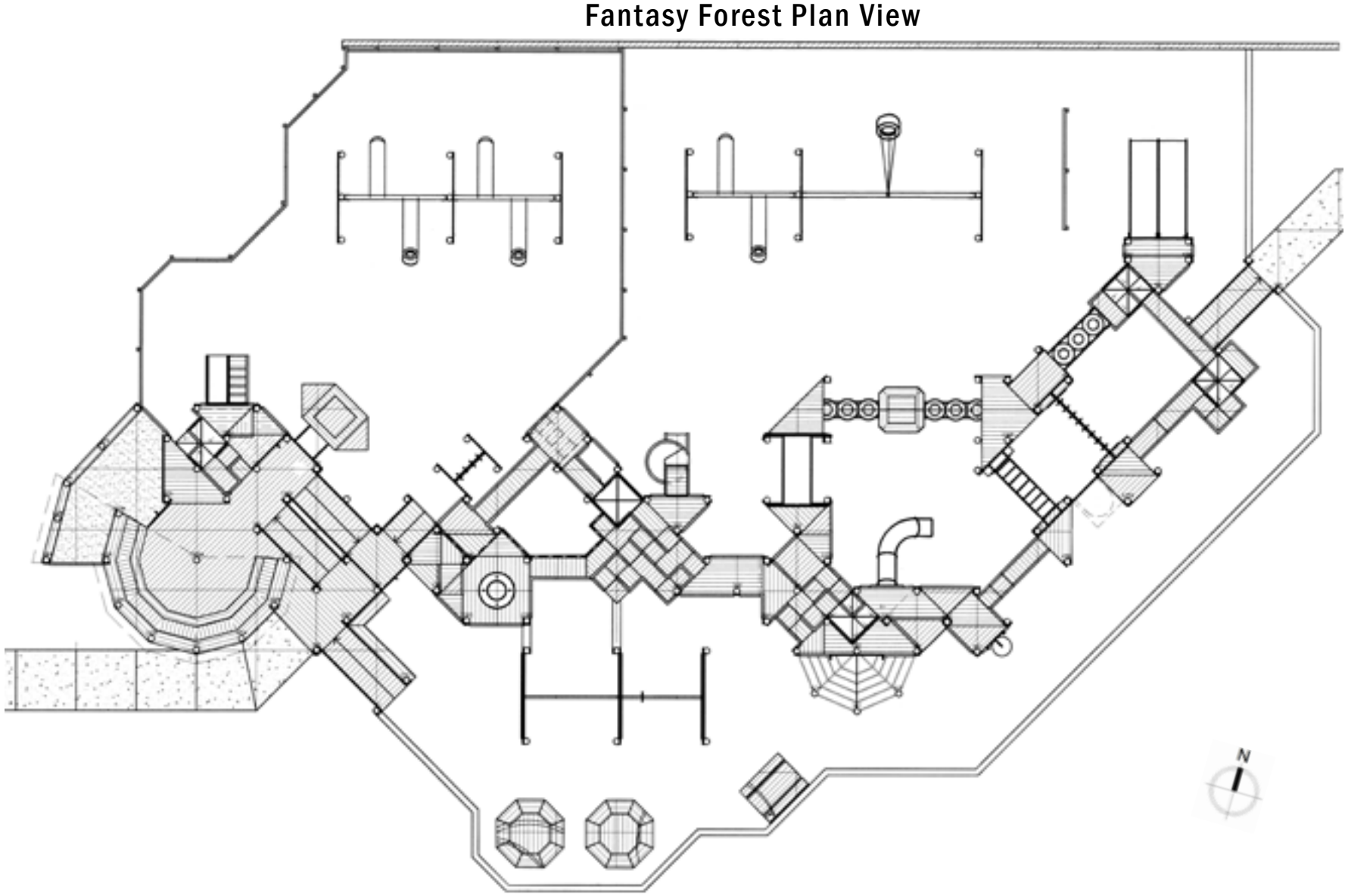
Areas of focus



FANTASY FOREST PLAYGROUND OVERVIEW

The Fantasy Forest Playground, built in 1995, remains a beloved community attraction with a deep emotional connection to the residents. However, maintenance and safety compliance remain ongoing concerns due to its wooden structure and age. After conducting our own assessment, four key takeaways have been identified.

- 1. The structure is deteriorating and poses a significant safety hazard
- 2. The outdated wooden structure lacks ADA access, making it non-compliant with current accessibility standards.
- 3. Maintenance and upkeep continue to be costly and expensive
- 4. Fails to meet inclusive standards for all ages and abilities



FANTASY FOREST PLAYGROUND

Following our assessment, the following pictures provide a closer examination of the issues and safety hazards present at the Fantasy Forest.



1. Splintering and declining wood frame



2. Deteriorating slide with loose composite sideboards



3. Park seating options are deteriorating, with wood rot and sinking planks



4. Decaying, splitting, and rotting decking causing tripping hazards



5. The swing hangers are showing wear and rust



6. The current ADA accessible path is deteriorating, with visible signs of splitting and rot

NO NAME CREEK

No Name Creek flows through the heart of Meinig Park, serving as a central and defining feature. The following key aspects should be carefully considered during design development.

- Soil erosion from surrounding slopes
- Lack of vegetation and habitat
- Improve bank conditions
- Refine No Name Creek pedestrian access



PATHWAY AND TRAIL SYSTEM

The park's pathway and trail system plays a crucial role in connecting the community together and providing access to other nearby trails and parks. Improvements could make these connections stronger, safer, and accessible for all. The following issues should be considered during the park's development.

- Paths are being compromised by root systems
- Not suitably constructed for maintenance vehicles
- Inconsistent pathway and trial surfaces
- A considerable amount of pathways are not constructed to meet ADA standards
- Other issues?



OFF LEASH DOG PARK

One of the most common requests from community members, outlined in Sandy's Parks and Trails Master Plan, is for more dog parks. The southern region of Meinig Memorial Park has been studied for this purpose. Here are the opportunities and constraints the area presents.

Opportunities:

- Designated dog park area with proper fencing for safety
- Large open space providing ample room for dogs to play and exercise
- Plenty of shade for dogs and owners
- Convenient parking for easy access

Constraints:

- Surrounding steep slopes
- Existing mature trees and heavy undergrowth
- Maintenance access
- Limited visibility during evening hours



HILLSIDE SEATING

Meinig Memorial Park hosts numerous community gatherings and outdoor events. Implementing structured terraced seating on the sloping hill across from the Main Stage would help facilitate the following outcomes.

- Enhance the user experience and improve safety
- Minimize the impact of foot traffic on existing trees
- Mitigate erosion and reduce runoff into No Name Creek

