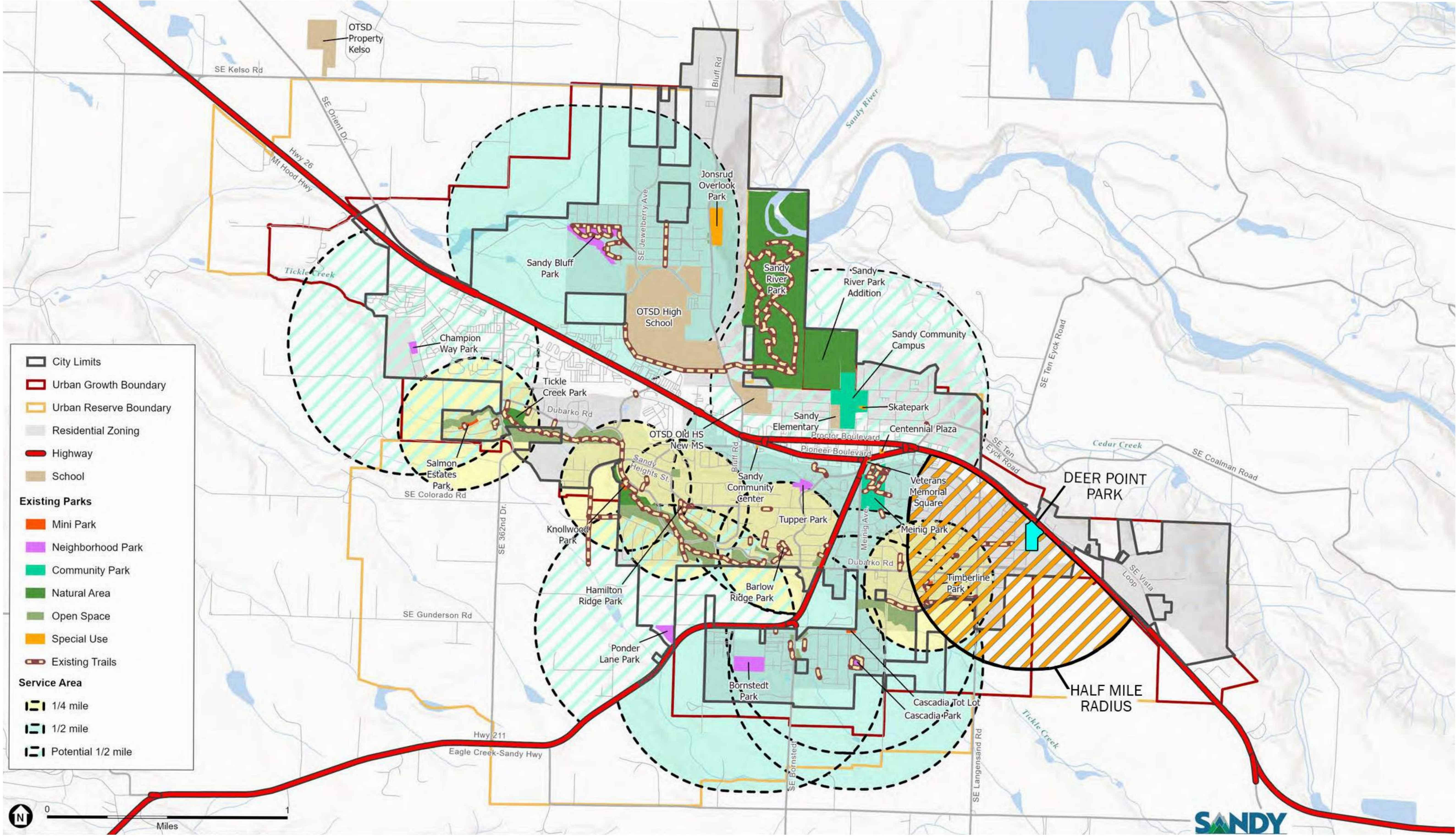


# EXISTING PARK CONTEXT



Neighborhood parks provide close-to-home recreation opportunities, primarily for passive and non-organized recreation activities.

- Safe and easy access for walking and biking
- Serves multiple user groups within the surrounding neighborhood
- Enhances the geographical dispersion of park features
- Commonly features park amenities like playgrounds, sport courts, and versatile open lawn areas
- Generally 2 to 5 acres in size
- Normally no parking Lots
- Typically no restrooms

# PROJECT BACKGROUND

The City of Sandy Parks and Trails Master Plan (PTMP) included a preliminary concept plan for Deer Point Neighborhood Park.

The conceptual plan was developed to introduce preliminary design features aimed at enhancing the potential of this underdeveloped neighborhood park.

The City of Sandy is seeking to enlarge the concept by incorporating a more comprehensive public engagement and community outreach strategy.



# SITE CONTEXT



# EXISTING CONDITIONS



- 3.165 ACRE PARK
- 25' ELEVATION CHANGE ACROSS LENGTH OF SITE
- MIX OF DOUGLAS FIR, CEDAR, MAPLE, AND OTHER TREE SPECIES
- EXISTING DRAINAGE FACILITIES
- PORTION OF SITE CONSUMED BY OVERGROWN BLACKBERRIES AND OTHER INVASIVE SPECIES
- LARGE OPEN LAWN AREA

# POTENTIAL PARK ELEMENTS:

Walking Paths/Sidewalks

Playground

Sport Court

Picnic Shelter

Lawn Areas

Natural Areas

Disc Golf

Habitat Improvements

Seating Areas

Other Park Elements?



# PARK SCHEDULE

## OVERALL SCHEDULE 2024

