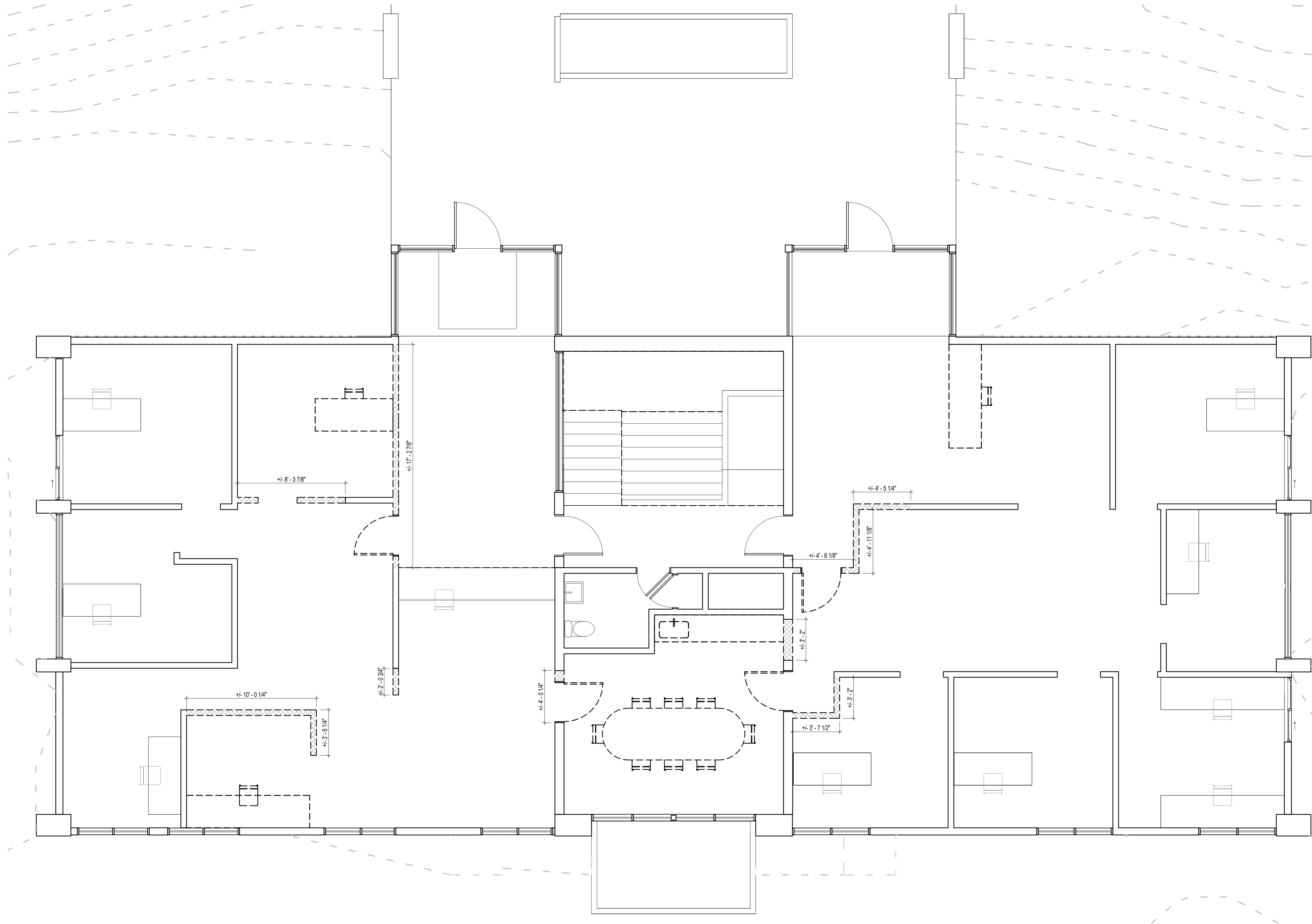


EXHIBIT A



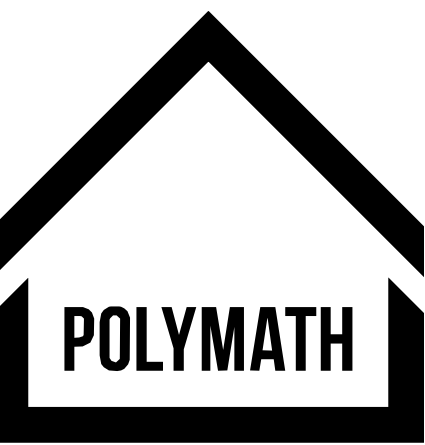
DEMOLITION PLAN LEGEND

EXISTING WALL / COMPONENT TO REMAIN
 EXISTING WALL / COMPONENT TO BE REMOVED

REMOVE DOOR AND FRAME

DEMOLITION PLAN NOTES

- WHERE (E) WINDOWS AND DOORS ARE DEMOLISHED AND REPLACED WITH SOLID WALL, REMOVE ADJACENT SIDING SUFFICIENT TO TIE IN WRB.
- ALL DIMENSIONS ARE TO BE VERIFIED IN FIELD BASED ON FINISHED DIMENSIONS.
- CONSULT WITH ARCHITECT PRIOR TO DEMOLITION OF ANY ELEMENTS NOT SHOWN.



Polymath Studio Architecture, LLC
 2505 SE 11th Ave, #212
 Portland, Oregon 97202
 503.593.0934 © 2024

PRELIMINARY
 NOT FOR
 CONSTRUCTION

SANDY CITY HALL SECURITY IMPROVEMENTS
 Project # 2516
 39250 Pioneer Blvd
 Sandy, Oregon 97055
 Client: City Of Sandy

Revisions	
Revision #	Revision Date

05 January 2026

This Drawing Formatted
 for 22" x 34" Paper

Demo Plan - 1st Floor

1/4" = 1'-0"

D2.1

