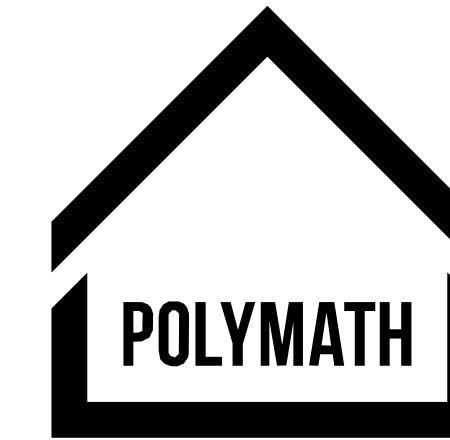


EXHIBIT B



Polymath Studio Architecture, LLC
 2503 SE 11th Ave, #212
 Portland, Oregon 97202
 503.593.0934 © 2024

PRELIMINARY
 NOT FOR
 CONSTRUCTION

SANDY CITY HALL

Client: City Of Sandy

Revisions

Revision #	Revision Date

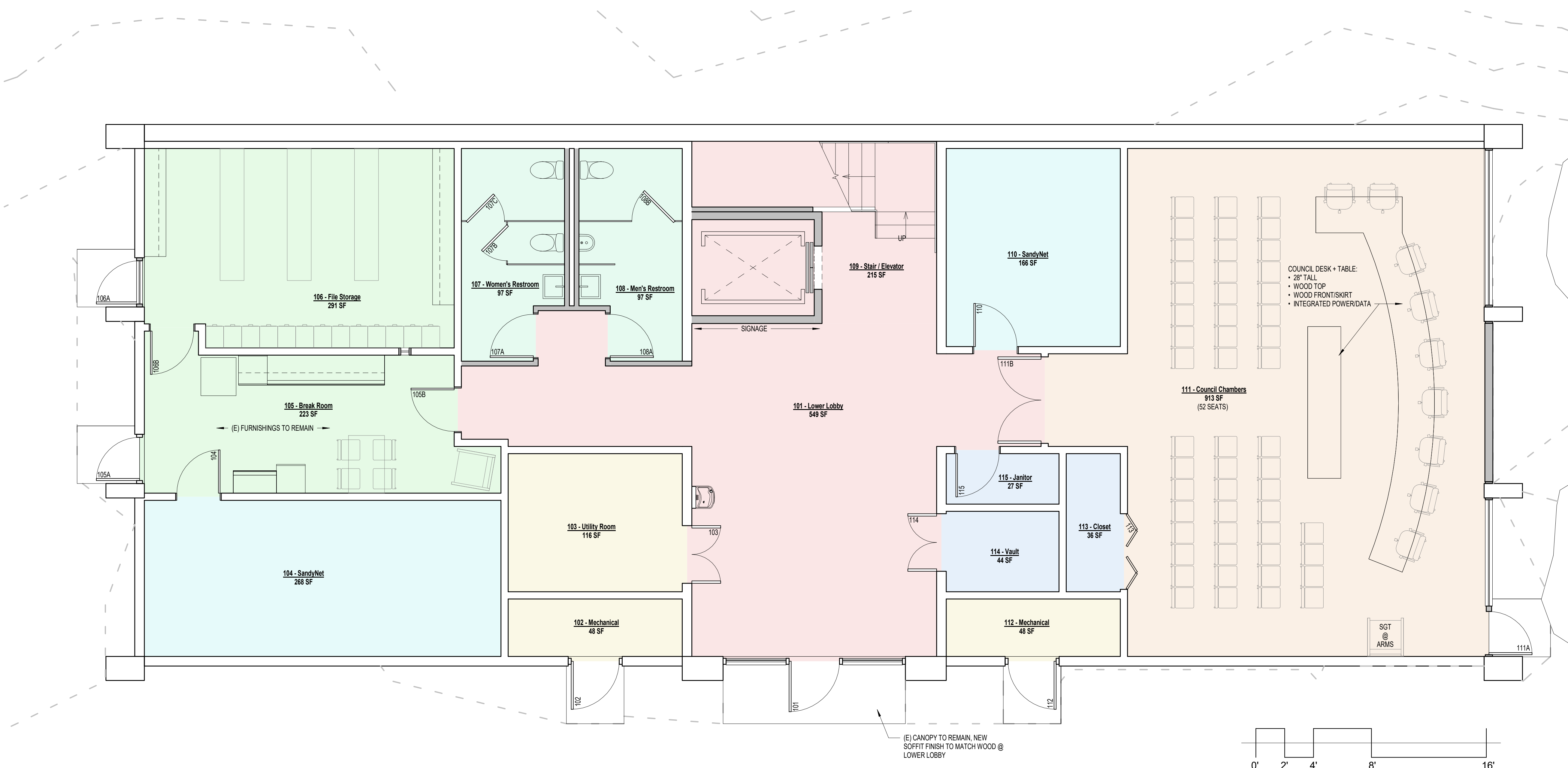
22, January 2025

This Drawing Formatted
 for 22" x 34" Paper

**Proposed Lower Floor
 Plan**

1/4" = 1'-0"

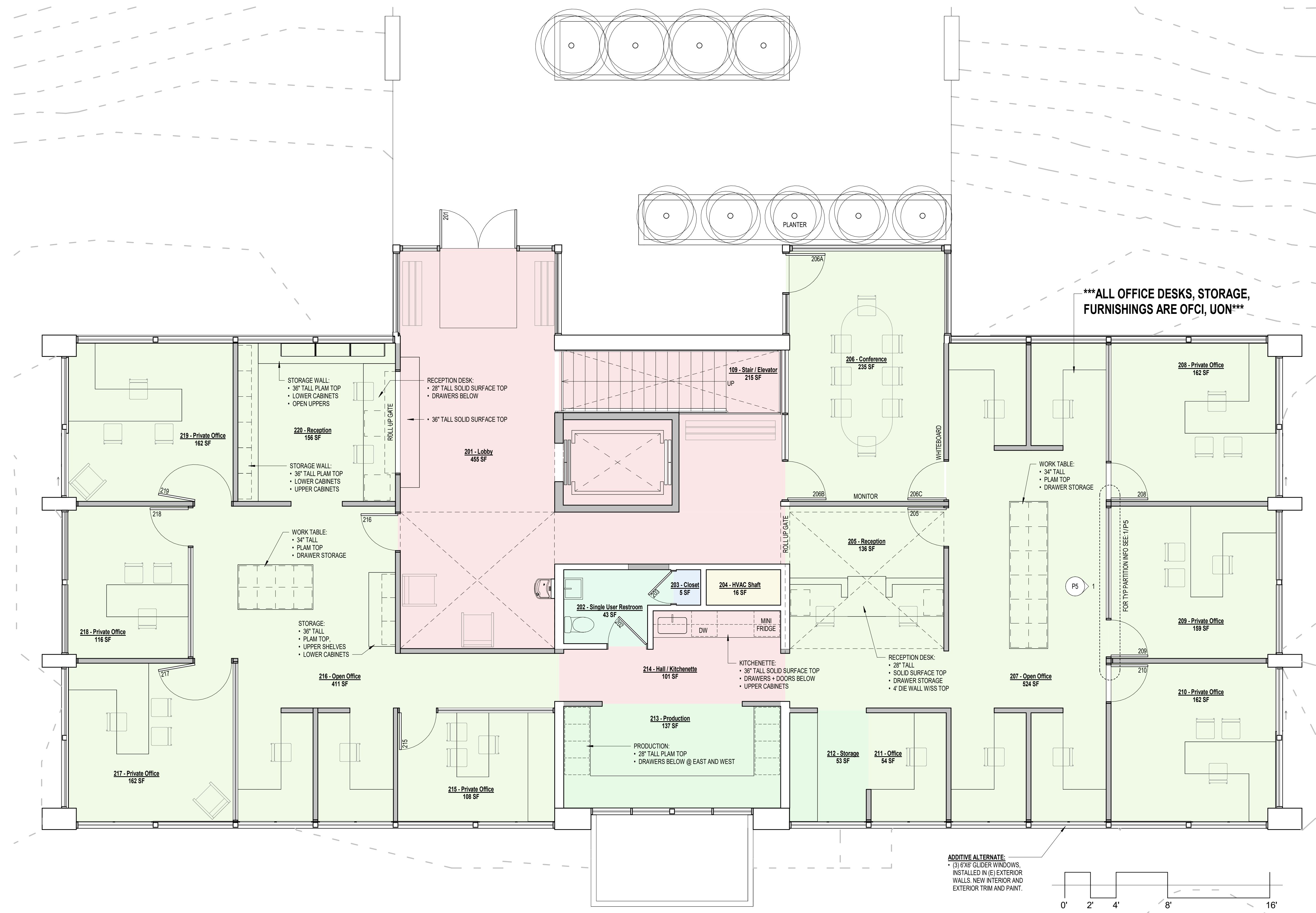
P3



PRELIMINARY
 NOT FOR
 CONSTRUCTION

SANDY CITY HALL

Client: City Of Sandy



Revisions

Revision #	Revision Date

22, January 2025

This Drawing Formatted
 for 22" x 34" Paper

Proposed Upper Floor
 Plan

1/4" = 1'-0"

P4