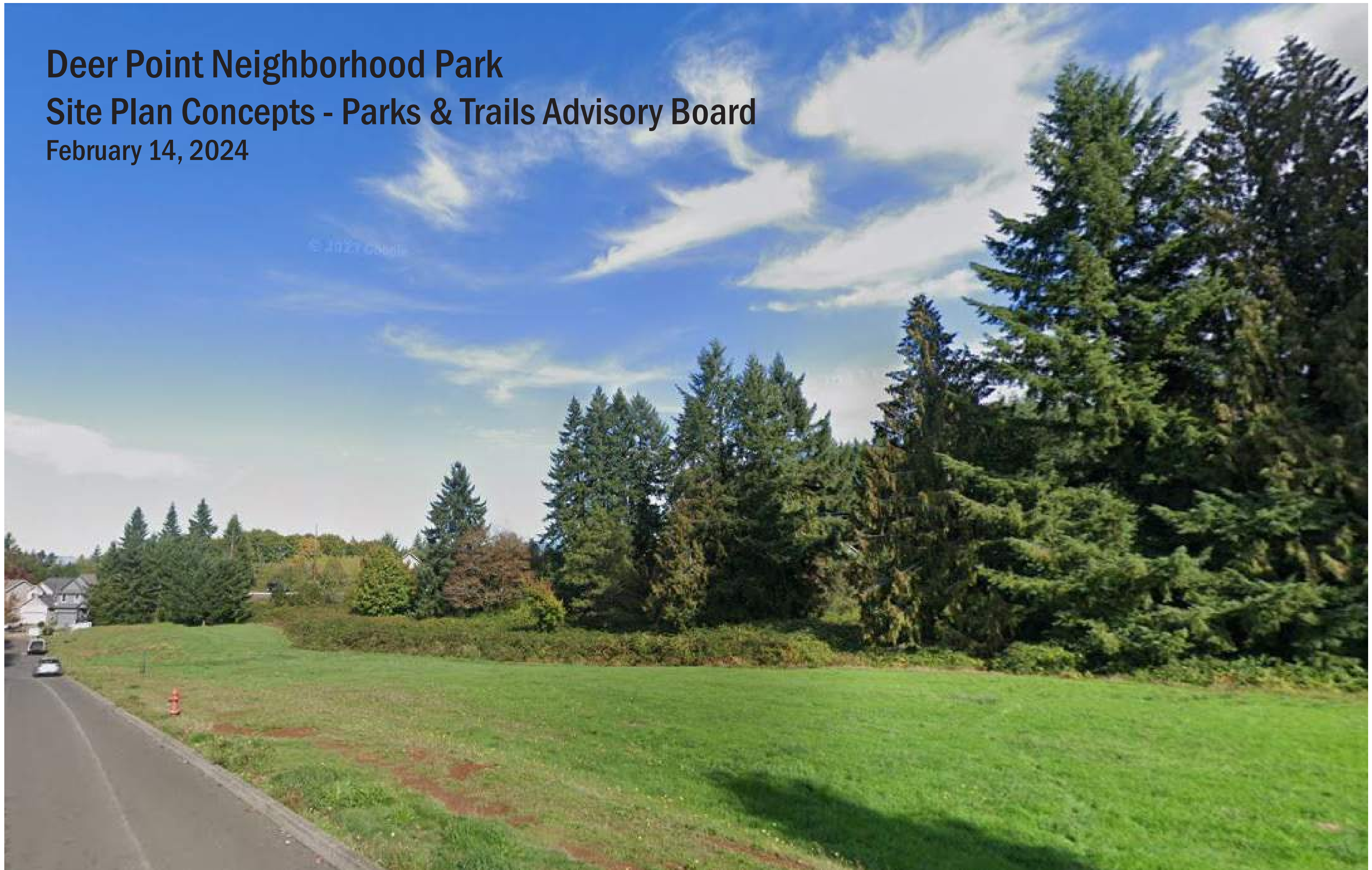


Deer Point Neighborhood Park
Site Plan Concepts - Parks & Trails Advisory Board
February 14, 2024





Highway 26 facing southeast



Highway 26 facing northwest



Meadow Ave facing north



Center of park facing HWY 26



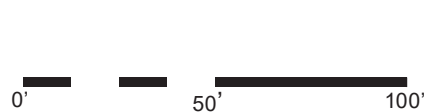
Meadow Ave facing south

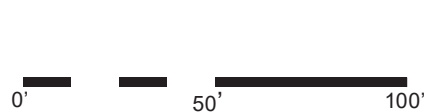


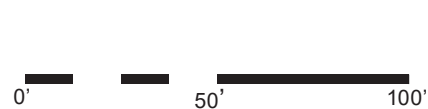


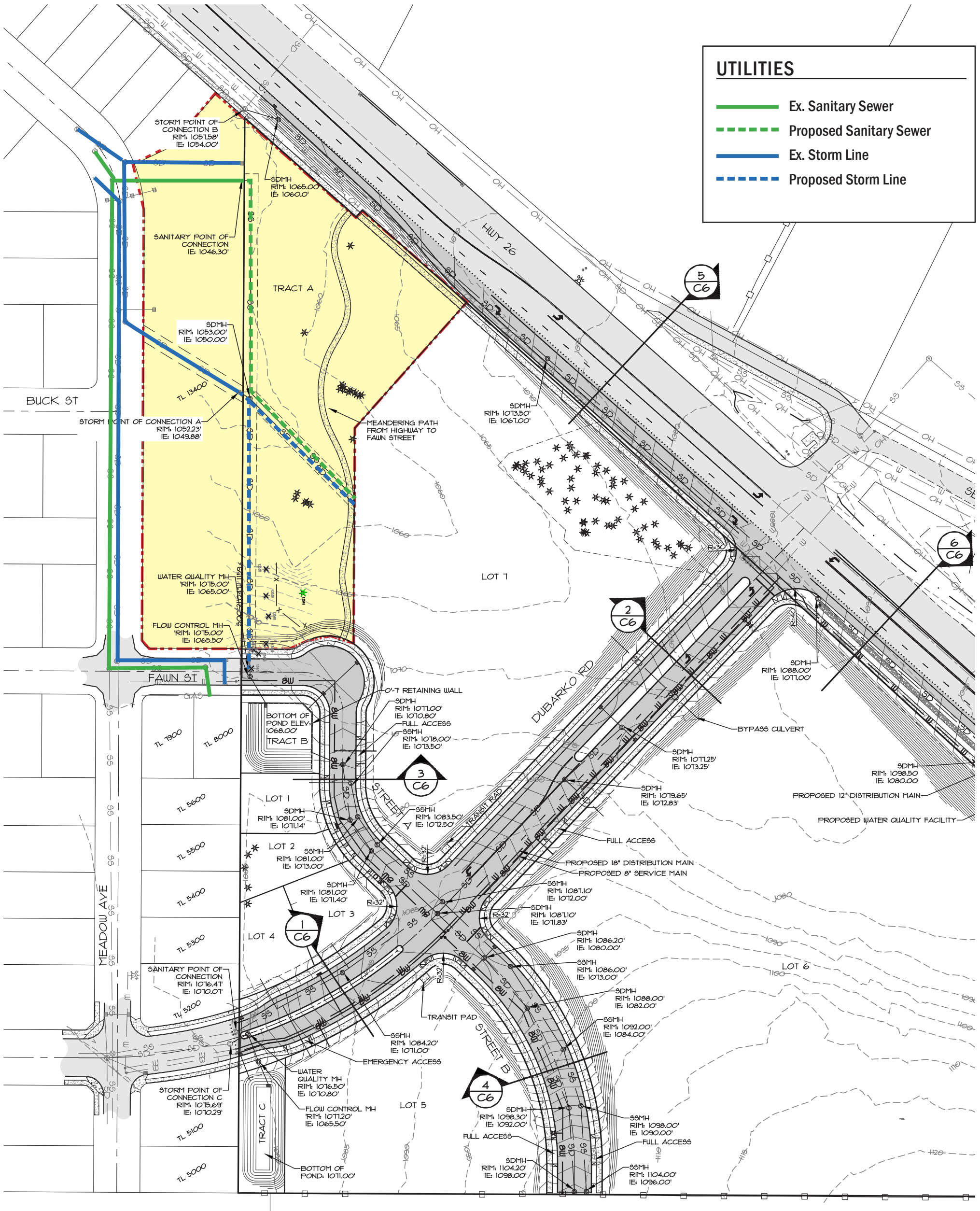
PARK AMENITIES

- 1** Playground
- 2** Shelter
- 3** Sport Court
- 4** Open Lawn
- 5** Shrubs and Groundcover





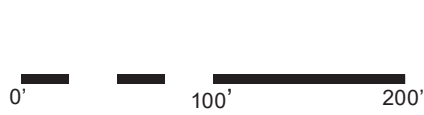




UTILITIES

- Ex. Sanitary Sewer
- - - Proposed Sanitary Sewer
- Ex. Storm Line
- - - Proposed Storm Line

TREE NO.	SPECIES (COMMON NAME)	DBH (INCHES)	CONDITION	COMMENTS	TREATMENT
13538	WESTERN REDCEDAR	39	GOOD	CODOMINANT AT 6' WITH INCLUDED BARK	REMOVE
13539	DOUGLAS-FIR	32	GOOD	MODERATELY ONE SIDED	REMOVE
13540	WESTERN REDCEDAR	37,33	GOOD	CODOMINANT AT 3' WITH INCLUDED BARK	REMOVE





Option 1



Option 2



Option 3

