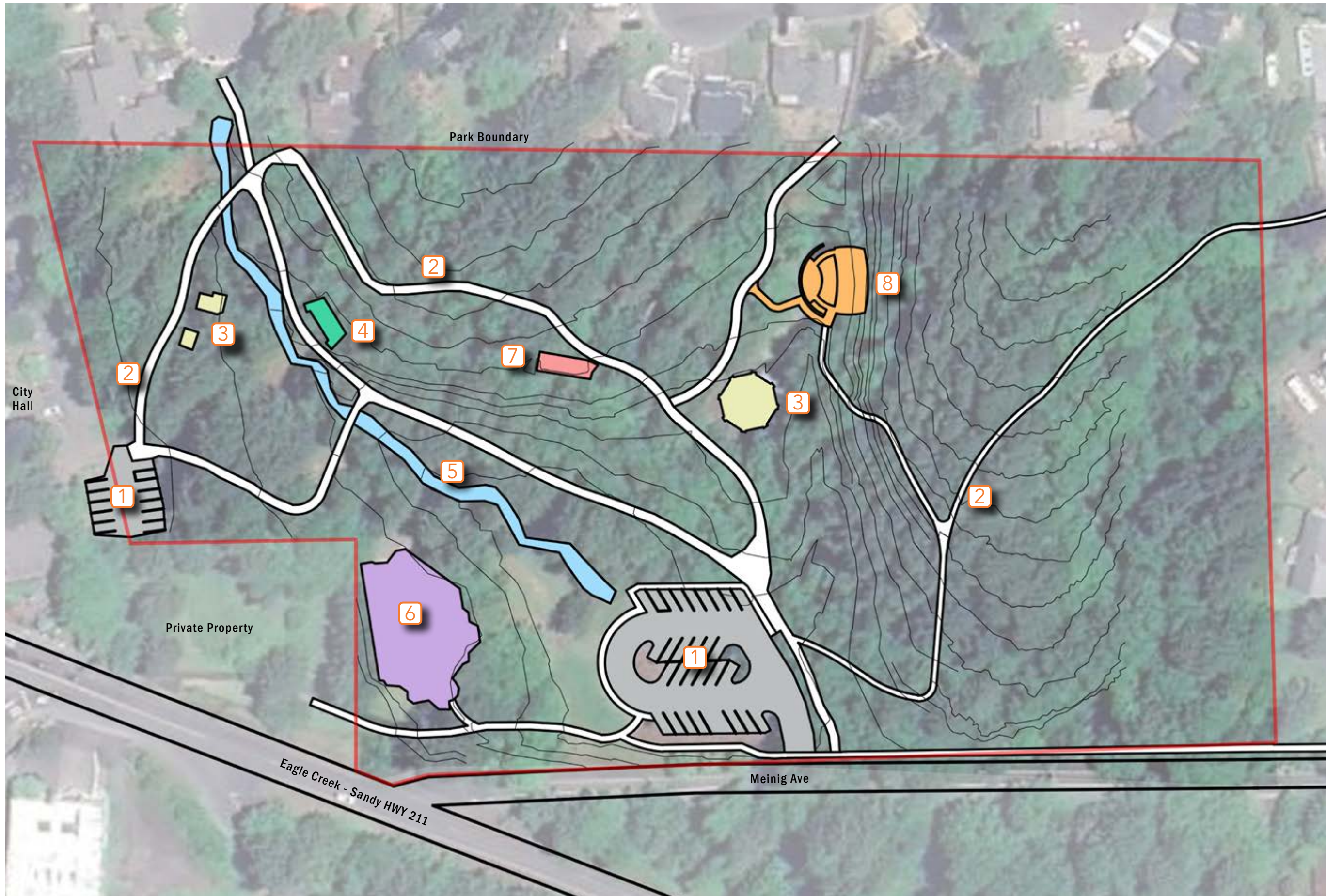




MEINIG MEMORIAL PARK

City Council

September 03, 2024



PARK AMENITIES

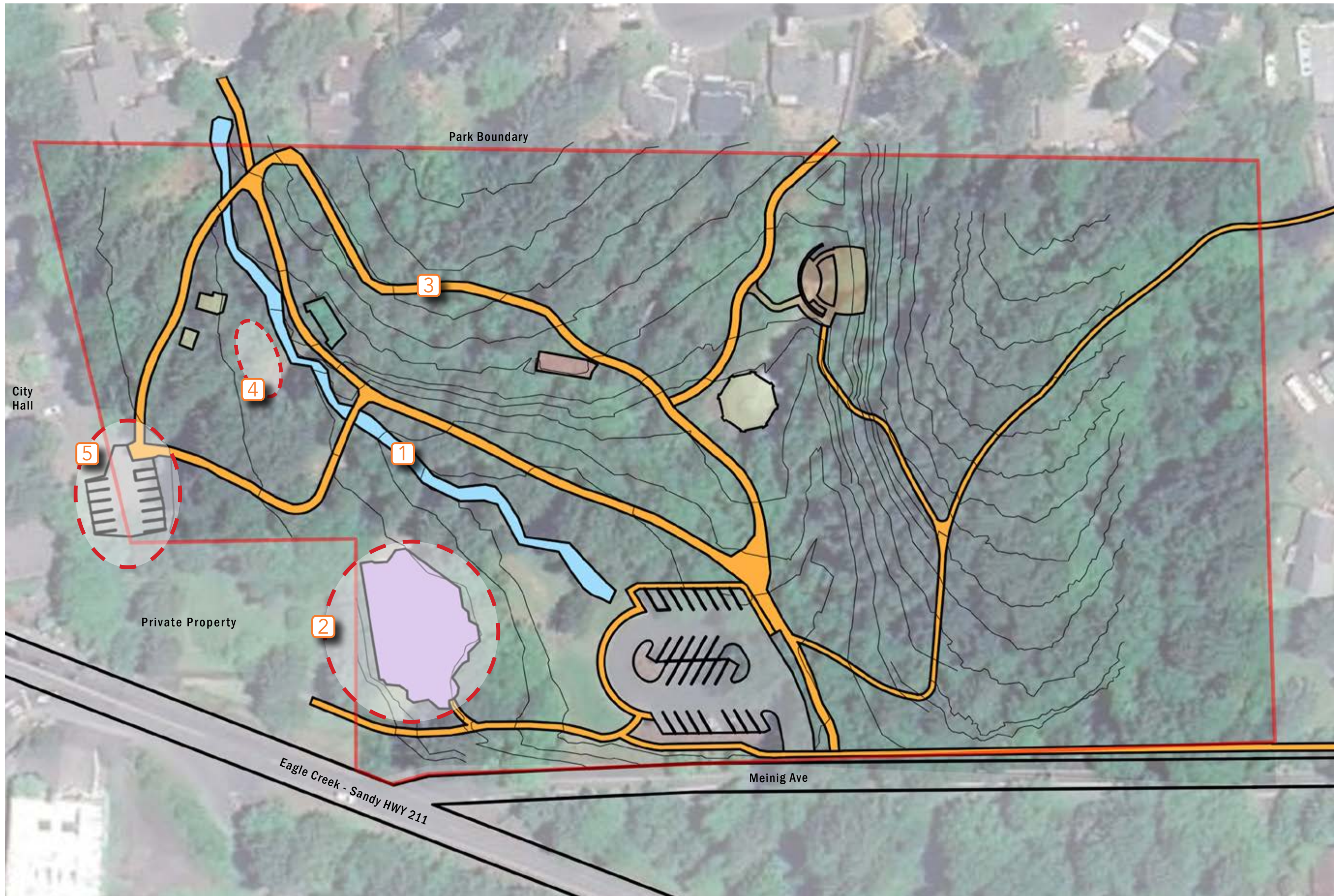
- 1** Parking Lot
- 2** Park Pathway System
- 3** Picnic Shelters
- 4** Main Stage
- 5** No Name Creek
- 6** Fantasy Forest Playground
- 7** Restrooms
- 8** Amphitheater

Existing Conditions

MEINIG MEMORIAL PARK 09.03.24



lango hansen LANDSCAPE ARCHITECTS



Focus Areas

- 1 No Name Creek
- 2 Fantasy Forest Playground
- 3 Park Pathway System
- 4 Hillside Seating
- 5 Parking Improvements

Focus Areas





ISSUES

- Unregulated pedestrian access to creek
- Soil erosion from surrounding slopes
- Lack of vegetation and habitat
- Degraded water quality and bank conditions

IMPROVEMENTS

- 1 Stream Access
- 2 Bank Stabilization
- 3 Revegetation and Habitat restoration
- 4 Water quality improvement

SHRUBS, PLANT SPECIES TO BE DETERMINED BY OWNER AND LANDSCAPE ARCHITECT. INSTALL IN AREAS AS DIRECTED BY OWNER AND WATER WITH GEL PACKS. FOR 2-GROWING SEASONS.

2. PROVIDE A MINIMUM WARRANTY ON ALL PLANT MATERIALS OF 2-GROWING SEASONS. PROVIDE TEMPORARY IRRIGATION/WATERING FOR 2-GROWING SEASONS.
3. ALL PLANT MATERIAL SHALL MEET THE STANDARDS OF ANSI Z60.1.
4. ALL SHRUBS, GROUND COVER AND UPPER BANK PLANTINGS SHALL RECEIVE 2-INCHES OF COMPOSTED BARK MULCH COVER SEE L.B.3.
5. VIEW/ACCESS POINTS -- ACCESS TO NO NAME CREEK IS AN IMPORTANT PART OF THE EXPERIENCE AT MEINIG MEMORIAL PARK. LIMITING ACCESS TO THE LOCATIONS SHOWN ON THIS SHEET WILL HELP IMPROVE THE CONDITION OF THE BANK WITHOUT ELIMINATING THIS ACTIVITY SEE 1/L.B.2.

INSTALLATION NOTES

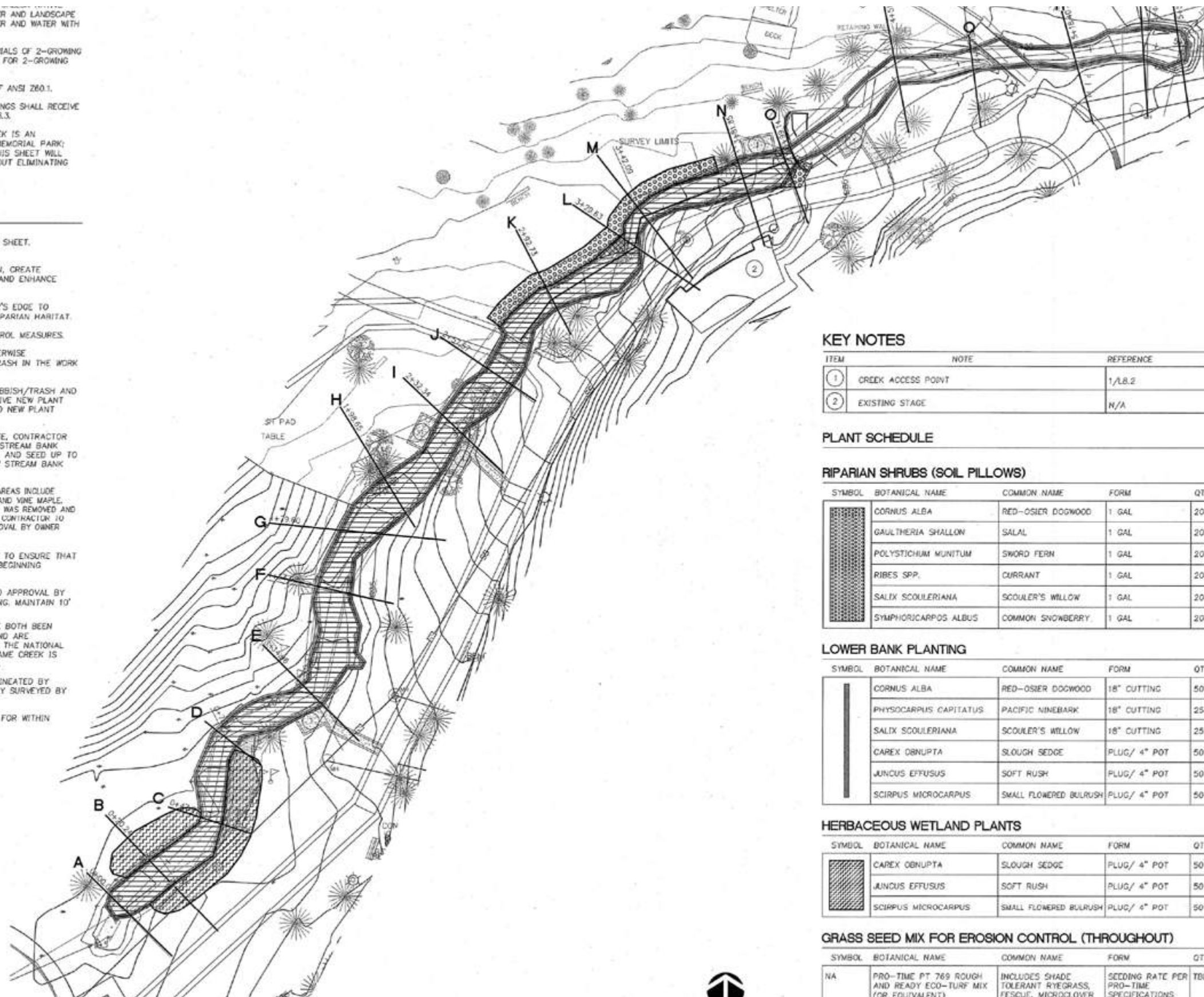
GENERAL

1. ALL INFORMATION ON SHEET T1.0 APPLIES TO THIS SHEET.

NO NAME CREEK IMPROVEMENTS

INTENT -- IMPROVE BANK CONDITIONS, REDUCE EROSION, CREATE OPPORTUNITY FOR HABITAT, IMPROVE WATER QUALITY AND ENHANCE PEDESTRIAN ACCESS.

2. VEGETATION -- INSTALL VERY CLOSE TO THE WATER'S EDGE TO STABILIZE THE BANKS AND TO IMPROVE STREAM/RIPARIAN HABITAT.
3. (SEE EROSION CONTROL PLANS) FOR EROSION CONTROL MEASURES.
4. REMOVE ALL NON-NATIVE, DEAD, INVASIVE OR OTHERWISE UNDESIRABLE PLANT SPECIES AND ANY RUBBISH/TRASH IN THE WORK AREA.
5. REMOVE SILT ACCUMULATION, WEEDS AND TURF, RUBBISH/TRASH AND OTHER ITEMS IN AREAS SHOWN ON PLANS TO RECEIVE NEW PLANT MATERIAL AND AS DIRECTED OF THE CITY PRIOR TO NEW PLANT MATERIAL INSTALLATION.
6. BOUNDARY OF EXISTING LAWN AREA IS APPROXIMATE, CONTRACTOR SHALL PROVIDE SEAMLESS TRANSITION ZONE FROM STREAM BANK PLANTING TO EXISTING LAWN AREAS. PREPARE SOIL AND SEED UP TO THE EDGE OF ADJACENT PATHS AND EDGES OF NEW STREAM BANK PLANTINGS.
5. PLANTS TO BE USED IN RE-VEGETATION OF DISTURBED AREAS INCLUDE INDIAN PLUM, RED-OSIER DOGWOOD, PACIFIC NINEBARK, AND VINE MAPLE. TURF TO BE USED ONLY IN AREAS WHERE EXISTING TURF WAS REMOVED AND NEED TO BE REPLACED TO MATCH EXISTING CONDITIONS. CONTRACTOR TO PROVIDE A RE-VEGETATION PLAN FOR REVIEW AND APPROVAL BY OWNER AND LANDSCAPE ARCHITECT. (SEE L2.1)
6. CONTRACTOR SHALL COORDINATE WITH OWNER/CITY TO ENSURE THAT ALL NECESSARY PERMITS ARE IN PLACE PRIOR TO BEGINNING CONSTRUCTION ACTIVITIES.
7. STAKE PROPOSED TREE LOCATIONS FOR REVIEW AND APPROVAL BY OWNER/OWNER'S REPRESENTATIVE PRIOR TO PLANTING. MAINTAIN 10' (FT.) MINIMUM DISTANCE FROM EXISTING TREES.
8. PERMITS -- D.E.Q. AND ARMY CORPS. PERMITS HAVE BOTH BEEN SUBMITTED BY PACIFIC HABITAT SERVICES (PHS) AND ARE CURRENTLY UNDER REVIEW. NO COORDINATION WITH THE NATIONAL MARINE FISHERIES SERVICES IS REQUIRED AS NO NAME CREEK IS NOT DESIGNATED AS ESSENTIAL SALMONID HABITAT.
- 8.1. THE ORDINARY HIGH WATER LINE HAS BEEN DELINEATED BY PACIFIC HABITAT SERVICES AND PROFESSIONALLY SURVEYED BY FIRWOOD DESIGN.
- 8.2. CUT/FILL CALCULATION HAVE BEEN ACCOUNTED FOR WITHIN THESE PERMITS.



1 FOCUS AREA A: CREEK IMPROVEMENTS
L22 1" = 20'-0"



KEY NOTES

ITEM	NOTE	REFERENCE
1	CREEK ACCESS POINT	1/L.B.2
2	EXISTING STAGE	N/A

PLANT SCHEDULE

RIPARIAN SHRUBS (SOIL PILLOWS)

SYMBOL	BOTANICAL NAME	COMMON NAME	FORM	QTY.
[Symbol]	CORNUS ALBA	RED-OSIER DOGWOOD	1 GAL	20
[Symbol]	GAULTHERIA SHALLOW	SALAL	1 GAL	20
[Symbol]	POLYSTICHUM MUNIUM	SWORD FERN	1 GAL	20
[Symbol]	RIBES SPP.	CURRENT	1 GAL	20
[Symbol]	SALIX SCOULERIANA	SCOULER'S WILLOW	1 GAL	20
[Symbol]	SYMPHORICARPOS ALBUS	COMMON SNOWBERRY	1 GAL	20

LOWER BANK PLANTING

SYMBOL	BOTANICAL NAME	COMMON NAME	FORM	QTY.
[Symbol]	CORNUS ALBA	RED-OSIER DOGWOOD	18" CUTTING	50
[Symbol]	PHYSCARPUS CAPITATUS	PACIFIC NINEBARK	18" CUTTING	25
[Symbol]	SALIX SCOULERIANA	SCOULER'S WILLOW	18" CUTTING	25
[Symbol]	CAREX OBRUPTA	SLOUGH SEDGE	PLUG/ 4" POT	50
[Symbol]	JUNCUS EFFUSUS	SOFT RUSH	PLUG/ 4" POT	50
[Symbol]	SCIRPUS MICROCARPUS	SMALL FLOWERED BULRUSH	PLUG/ 4" POT	50

HERBACEOUS WETLAND PLANTS

SYMBOL	BOTANICAL NAME	COMMON NAME	FORM	QTY.
[Symbol]	CAREX OBRUPTA	SLOUGH SEDGE	PLUG/ 4" POT	50
[Symbol]	JUNCUS EFFUSUS	SOFT RUSH	PLUG/ 4" POT	50
[Symbol]	SCIRPUS MICROCARPUS	SMALL FLOWERED BULRUSH	PLUG/ 4" POT	50

GRASS SEED MIX FOR EROSION CONTROL (THROUGHOUT)

SYMBOL	BOTANICAL NAME	COMMON NAME	FORM	QTY.
NA	PRO-TIME PT 769 ROUGH AND READY ECO-TURF MIX (OR EQUIVALENT)	INCLUDES SHADE TOLERANT RYEGRASS, FESCUE, MICROCLOVER BLEND	SEEDING RATE PER PRO-TIME SPECIFICATIONS	TBD



Features

- Fort-like Structures
- Climbing Walls and Scrambles
- Nooks and Quiet Spaces
- Transfer Decks
- Ground Level Play Elements
- Swings
- Metal Posts and Platforms with Recycled Plastic Members



Focus Area 2 - Fantasy Forest Playground - Option 1



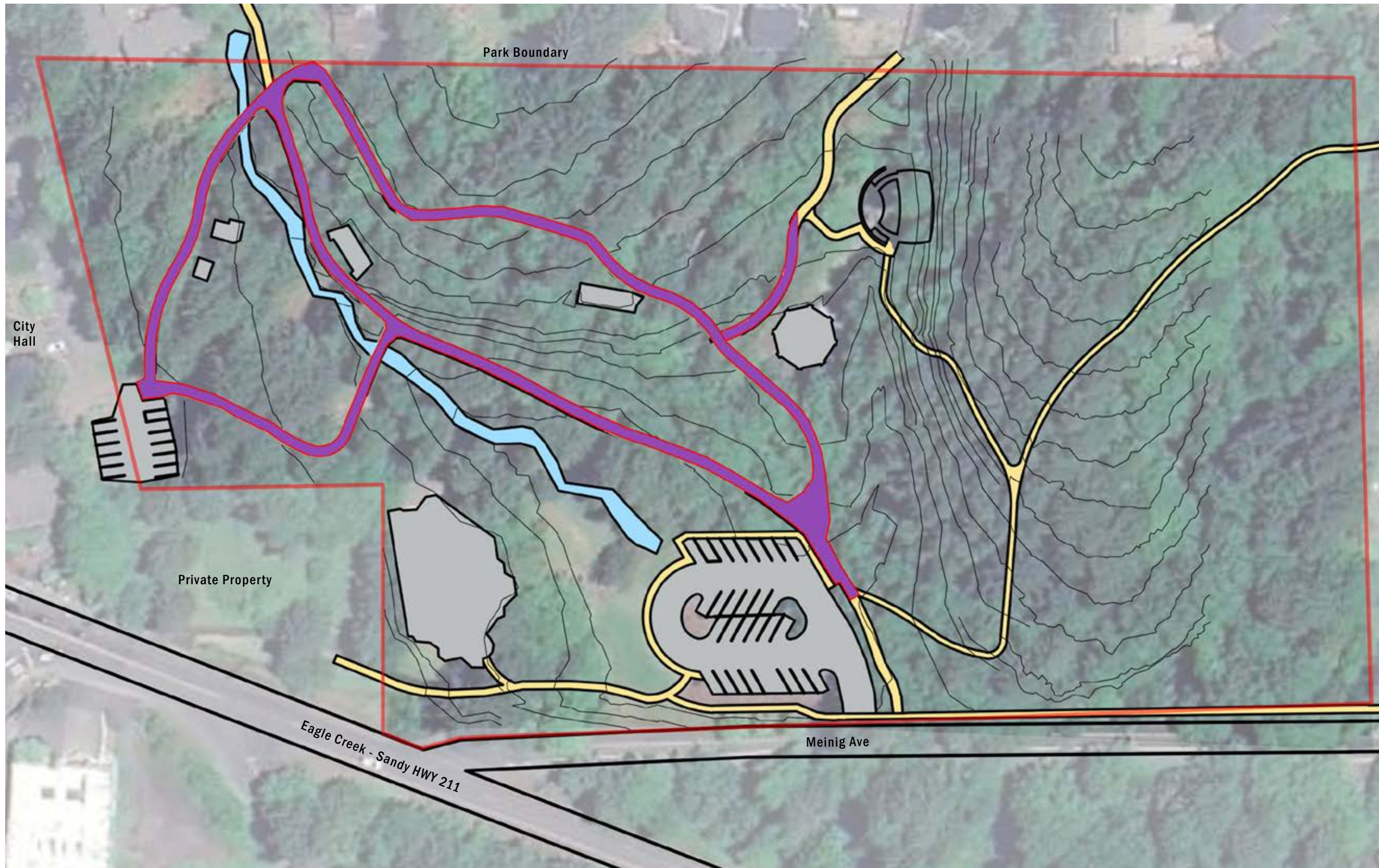
Features

- Climbing Maze
- Vertical Rope Column
- Wavy Net Scramble
- Spiraling tube slides
- Monkey Bars + Webbed Bridges
- Ground Level Play Elements
- Barrier-free Spinner



Features




- Embankment Ramp
- Sensory Tunnel
- Super Netplex
- Nature-inspired Climbers
- Spinners and Swings
- Symbol Communication Sign



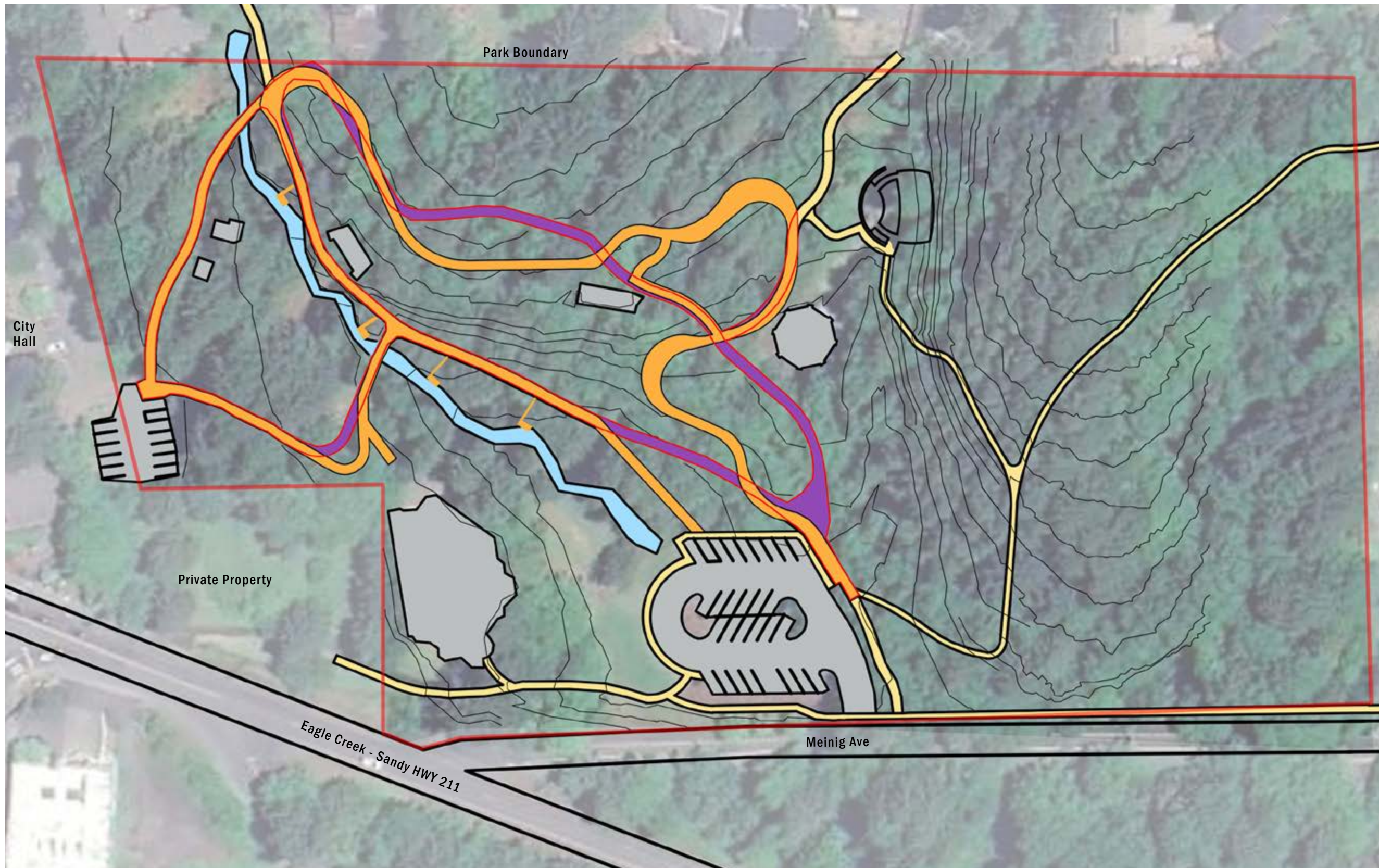
ISSUES

- Compromised by roots
- Not constructed to accommodate maintenance vehicles
- Inconsistent surfacing
- Lack of accessible routes through park to most destinations

IMPROVEMENTS

-  Existing path to be removed
-  Existing path to remain
-  New path








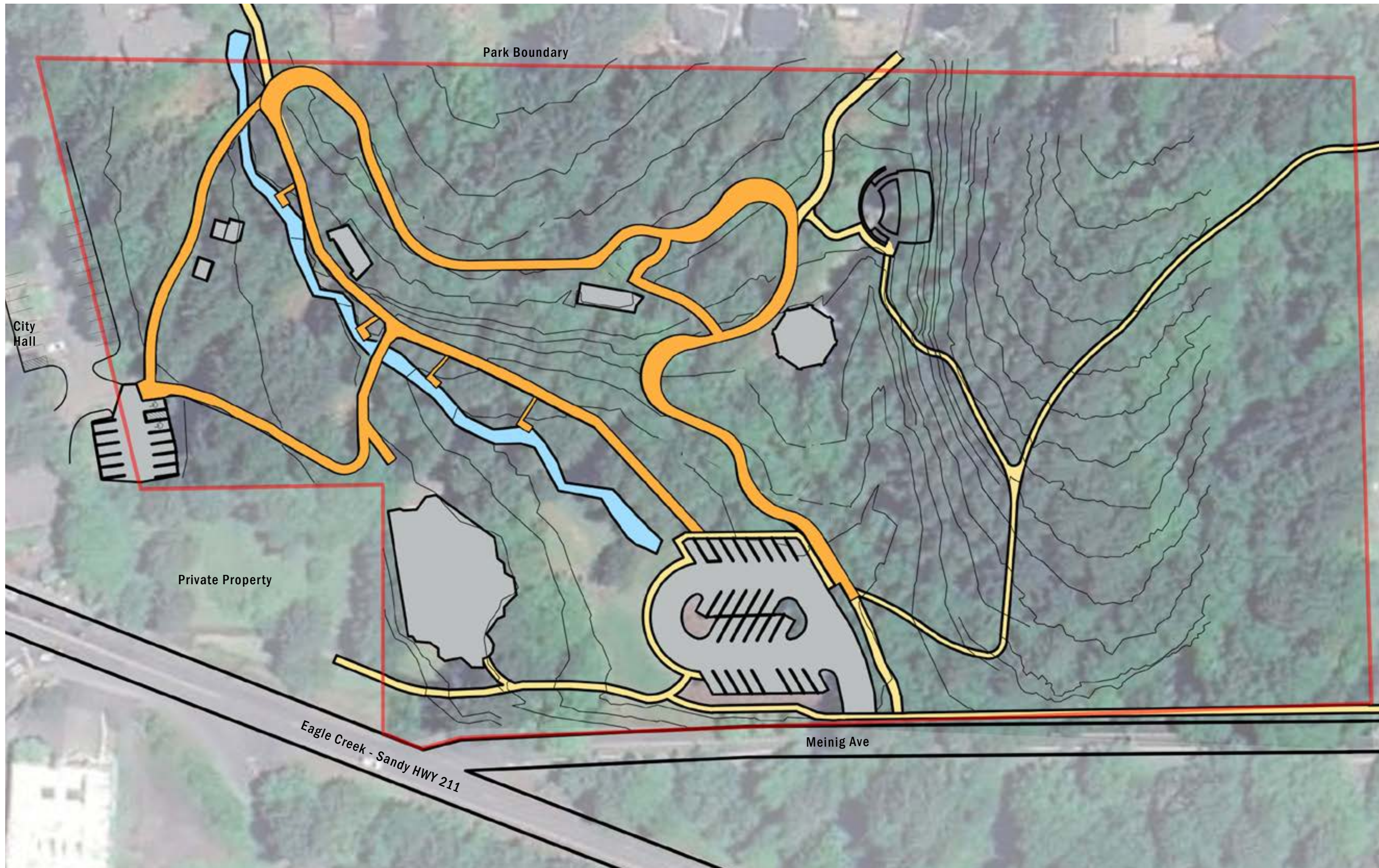
ISSUES

- Compromised by roots
- Not constructed to accommodate maintenance vehicles
- Inconsistent surfacing
- Lack of accessible routes through park to most destinations

IMPROVEMENTS

-  Existing path to be removed
-  Existing path to remain
-  New path








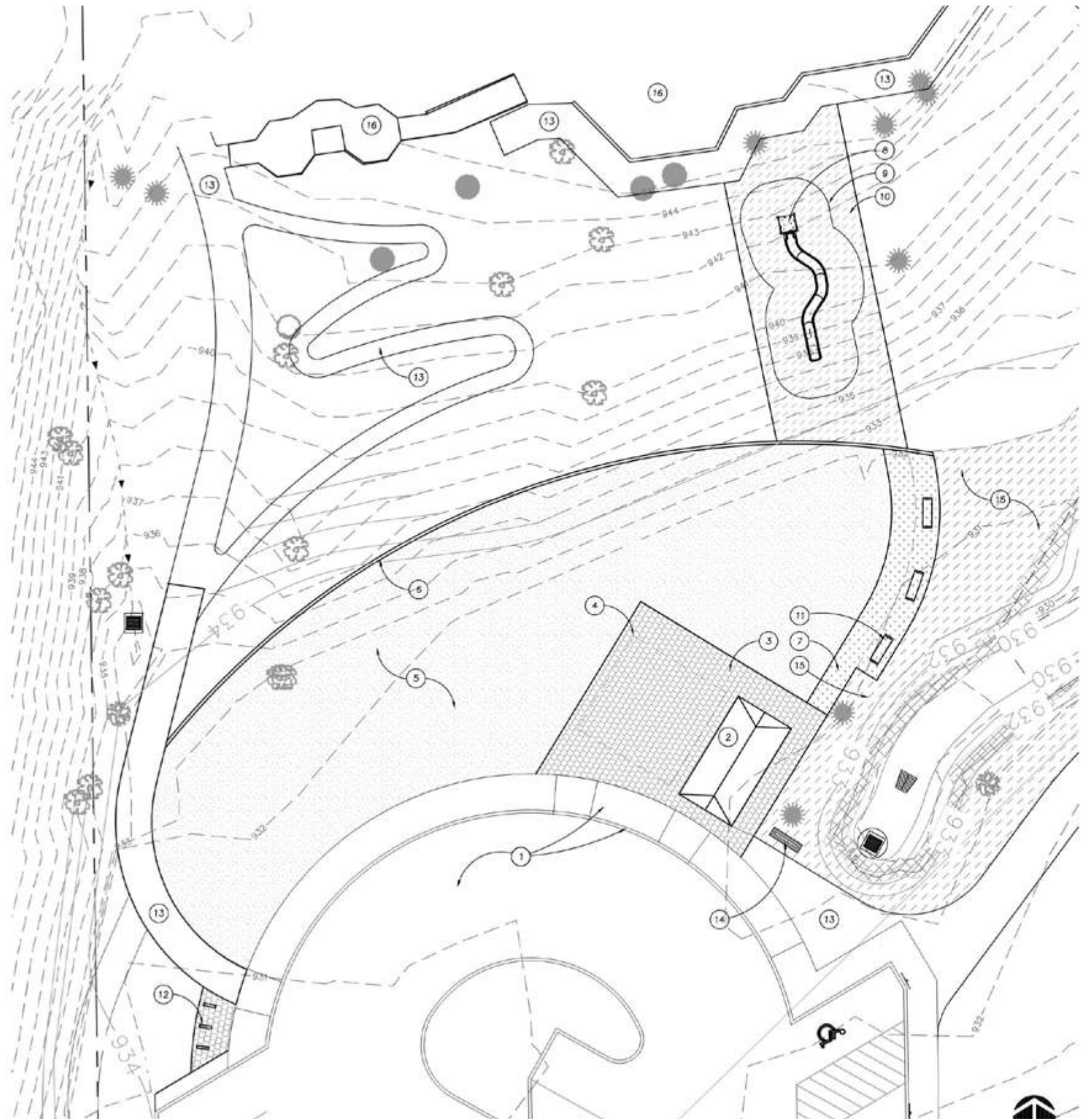
ISSUES

- Compromised by roots
- Not constructed to accommodate maintenance vehicles
- Inconsistent surfacing
- Lack of accessible routes through park to most destinations

IMPROVEMENTS

-  Existing path to be removed
-  Existing path to remain
-  New path





KEY NOTES

ITEM	NOTE
1	EXISTING PARKING LOT, CURB AND SIDEWALK
2	RESTROOM
3	PLAZA
4	18' X 18' TENT SLEEVE AT ALL 4 CORNERS
5	LAWN AREA
6	CONCRETE MOW BAND, SEE 8/L&I
7	CRUSHED STONE WALKING SURFACE, SEE 7/L&I
8	EMBANKMENT/HILLSIDE SLIDE
9	FALL/SAFETY ZONE
10	PLAY SURFACING
11	BENCH
12	BIKE RACK
13	PROPOSED PATH, SEE L2.1
14	SIGN, SEE L2.1
15	CREEK IMPROVEMENTS, SEE L2.2
16	EXISTING PLAYGROUND

LEGEND

SYMBOL	NOTE
[Grid pattern]	PERMEABLE PAVERS, SEE INSTALLATION NOTES
[Dotted pattern]	CRUSHED STONE WALKING SURFACE, SEE 7/L&I
[Cross-hatch pattern]	PLAY SURFACING, SEE INSTALLATION NOTES
[Blank]	LAWN, SEE INSTALLATION NOTES

INSTALLATION NOTES

GENERAL

- ALL INFORMATION ON SHEET L2.0 APPLIES TO THIS SHEET.
- REFER TO L2.1 FOR ALL PATHS AND SIGNAGE SHOWN ON THIS PLAN EXCEPT AS NOTED BELOW.

RESTROOM & PLAZA

INTENT - THE PARKING AREA WAS RECONFIGURED IN 2011 TO PROVIDE MORE EFFECTIVE STORMWATER MANAGEMENT. AS AN ADDITIONAL BENEFIT, THE NEW PARKING LOT DESIGN ALLOWED FOR A FUTURE, MORE WELCOMING AND USEFUL PARK ENTRY AND CONNECTION WITH THE PLAYGROUND.

- EXISTING PARKING LOT: IMPROVEMENTS SHOWN ARE FROM THE 2011 BID DOCUMENTS AND HAVE NOT BEEN SURVEYED. ADJUST PROPOSED IMPROVEMENTS TO CLEARLY MEET EXISTING CONDITIONS. NOTIFY THE CITY OF ALL DISCREPANCIES PRIOR TO BEGINNING CONSTRUCTION.
- RESTROOM: TWO STALL DENALI OR CASCADIAN BY CXT (800) 696-5766, OR APPROVED SUBSTITUTION. CITY SHALL APPROVE ALL SPECIFICATIONS PRIOR TO BUILDING. FABRICATION AND DELIVERY. ALL REQUIRED PERMITS SHALL BE COORDINATED BY THE CONTRACTOR AND PAID FOR BY THE CITY. WATER, SANITARY AND ELECTRIC UTILITIES/CONDUITS ARE AVAILABLE, CONTRACTOR TO FIELD VERIFY EXACT LOCATIONS.
- PLAZA: ECO-PRIORA PERMEABLE PAVERS BY MUTUAL MATERIALS (503)624-8850, OR APPROVED SUBSTITUTION. INSTALL PER MANUFACTURER'S INSTRUCTIONS INCLUDING EDGE CONDITION.
 - PROVIDE FOUR (4) SLEEVES TO ALLOW AN 18'X18' TENT TO BE INSTALLED.
- LAWN AREA: FLEXIBLE LAWN SPACE SLOPING 1.5% TO 2% TOWARDS PARKING OR CREEK.
 - ENTIRE LAWN AREA SHALL RECEIVE A MINIMUM OF 12-INCHES OF WELL-DRAINING TOPSOIL FREE OF ANY WEED SEED AND OTHER FOREIGN MATERIAL.
 - SEED WITH SHADE, HIGH TRAFFIC TOLERANT MIX SUCH AS SHADOW BY SUNMARK SEEDS, (503) 214-7333, AT 10 LBS/1000 SF.
 - IRRIGATE WITH HIGH EFFICIENCY, STATE OF THE ART EQUIPMENT. PROVIDE DESIGN-BUILD IRRIGATION PLAN FOR CITY APPROVAL PRIOR TO INSTALLATION. MOUNT CONTROLLER IN RESTROOM UTILITY CHASE OR ON PEDESTAL. SEE L&I FOR DETAILS.
 - INSTALL MOW BAND AS SHOWN IN THE PLAN TO SEPARATE THE LAWN FROM THE NATIVE PLANTINGS ON THE HILLSIDE.

EMBANKMENT/HILLSIDE SLIDE

INTENT - PROVIDE A FUN CONNECTION BETWEEN THE PLAYGROUND AND THE PARKING AREA THAT TAKES ADVANTAGE OF THE STEEP HILLSIDE BETWEEN THE TWO DESTINATIONS.

- ADA ACCESSIBLE SLIDE: OPTION 1 = MODEL NO. FLET23158 BY KOMPAN, (800) 426-9788. OPTION 2 = ORIGINS HILLSIDE SLIDE BY PLAYWORLD SYSTEMS VIA NORTHWEST PLAYGROUND EQUIPMENT, (541) 554-2902. OR OTHER APPROVED SUBSTITUTION.
 - GEOTECHNICAL INFORMATION MAY BE NECESSARY FOR FOOTING AND FOUNDATION ENGINEERING.
 - ALL REQUIRED PERMITS SHALL BE COORDINATED BY THE CONTRACTOR AND PAID FOR BY THE CITY.
- SURFACING: INSTALL RUBBERIZED PLAY SURFACING, PLAYGROUND GRASS BY FOREVER LAWN, OR OTHER APPROVED SUBSTITUTION PER MANUFACTURER'S INSTRUCTIONS WITHIN FALL/SAFETY ZONE.

SITE FURNISHINGS

- BENCH: MEMORIAL BENCHES BY CITY OR FAIRWEATHER MODEL #PL-3, COLOR - FOREST GREEN, MOUNT PER MANUFACTURER'S INSTRUCTIONS INTO CONCRETE BASE, COVER CONCRETE WITH 1" MIN. CRUSHED STONE WALKING SURFACE. WWW.FAIRWEATHERSF.COM
- BIKE RACK: FAIRWEATHER MODEL #BR-1.3, COLOR - FOREST GREEN, EMBED MOUNT PER MANUFACTURER'S INSTRUCTIONS. WWW.FAIRWEATHERSF.COM



Previous Layout



Revised Plan Option



Parking Lot Improvements



- Replaces damaged asphalt pavement
- Formalizes parking spaces and creates 2 code-required accessible parking spaces
- Provides space for food cart setup to serve special events at the park
- Connects to reworked accessible pathways
- Updates landscape to match park planting
- Provides lighting and bollards at parking lot

ADDITIONAL FOCUS AREAS

- Park Signage - Way-finding, etc.
- Electrical Upgrades
- Shelter Repairs

Focus Area 5 - Parking Lot Improvements