



**Bringing
Everyone
Together through the
Crisis of
Housing**

Our vision is for people of the community to be able to find housing at an affordable price and to assist people in navigating through the challenges and problems of renting in this community.

Board of Directors

- Cory 'Salty' Riggs
- Liz Weiss
- Rikki Boucher
- Rachel Link
- Joey Rovinski
- Azaria Noud
- Brandon Becker
- Becca Hauser



- Fundraising Committee
- Affordable Housing Subsidy Grant Committee

Thanks to our generous sponsors



There is plenty of assistance for low income workers, but the majority of the workforce makes too much money to qualify

- Average rental rates are \$1,200 per month and not affordable to anyone making 100% AMI
 - Frontline workers are hit particularly hard by the pandemic. It is their direct responsibility to keep the community safe by missing work whenever they have any symptoms, are getting tested, and quarantining.
- This is a major financial strain on an already cost-burdened demographic.

Rental Subsidies



- Recipients will be selected by our Affordable Housing Subsidy Grant Committee
- All subsidies will be determined by the Affordable Housing Subsidy Grant Eligibility, Selection, and Preference Criteria
- Based on HUD guidelines, on average, \$250 - \$500 will be awarded per household

**We are asking you
for funding for rental
subsidies.**





What is a safe outdoor space?

- A public health approach to managing the covid epidemic in our town while supporting our workforce
- A self sustaining private campground in town
- Relief for the downtown parking burden
- Incentivize camping tourists to stay in town which brings revenue to downtown businesses
- An outdoor sheltering model for Chaffee County employees.
- 24 hour paid staff



More information on
SAFE OUTDOOR SPACE



SALIDA NEEDS

SAFE OUTDOOR SPACE



**BRINGING
EVERYONE
TOGETHER THROUGH THE
CRISIS OF
HOUSING**



Camp in Downtown Salida

Open May – August

- Closed one hour daily for sanitation and maintenance
- negative rapid test required prior to entry
- Walking distance from downtown restaurants, shopping and amenities

\$5 DAY USE FEE

**\$40 DAILY
CAMPING FEE**

Reduced to \$5 with recent
paystub from Chaffee
County



Resources

- Camp Host
- Bathrooms
- Hand Sinks
- Showers
- Covid Tests
- Trash
- Drinking Water
- Electricity
- Internet
- Bike Racks

We need Community, City and County Support

Land

We need help finding land and obtaining necessary permits.

Covid Tests

We need rapid covid tests for every guest daily upon entry.

Funding

We need funding to get the project started. All proceeds from the campground go towards rental subsidies for the workforce.

Volunteers

We will provide campground management and hire a camp host to live on the property.

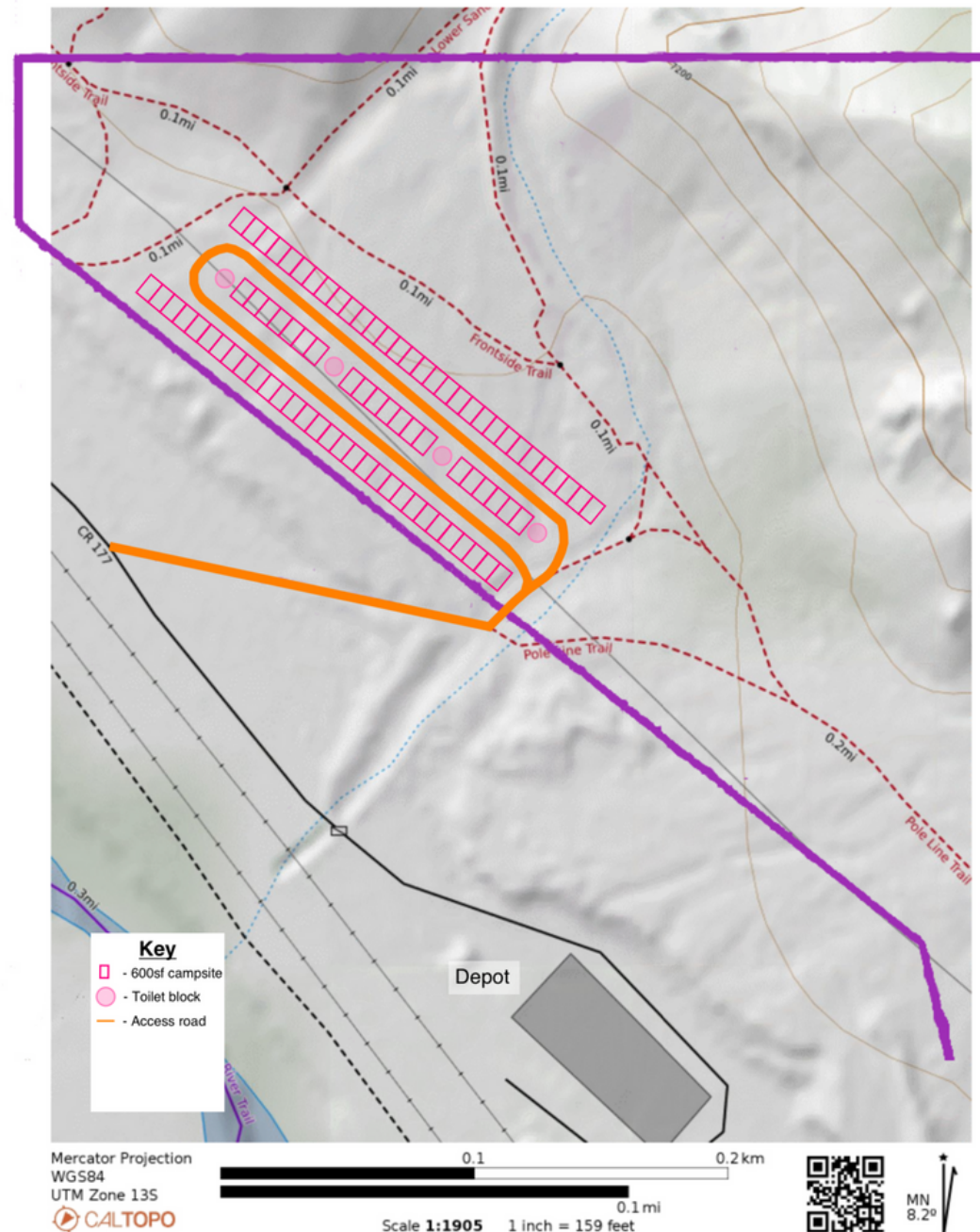


**Salida needs
Safe Outdoor Space!**

80 CAMPSITES

**4 SANITATION
STATIONS**

ON CITY LAND



Safe Outdoor Space - A temporary workforce housing solution for the Salida 2022 Summer Season.

Did you know that an estimated 30% of summer service industry workers in Salida sleep in their cars on the street because they can't afford housing?

"It's common for my summer employees to come in an hour early before their shift to wash up in the restroom or charge their phones because they are living out of their car."

Housing for up to 40 employed Individuals in Chaffee County from May 1 - August 31, 2022	Provide a stable workforce for local businesses that depend on summer revenue.	Relieves downtown parking burden by offering a campground walking/biking distance.	Campground model offers a safe solution for the service industry workers.
--	--	--	---

Project Budget for 4 months of Operation

Expenses

Campsites	Picnic Tables for charging station, site marking, signage	\$5,000
Fencing	Perimeter fencing to ensure entry of registered campers.	\$1,400
Internet	Wifi Service for campers to access internet at campground	\$500
Porta Potties & Handsinks	Rental and servicing for 4 months ensuring low infrastructure of campground	\$4,000
Shower Trailer	Rental and servicing for 4 months to ensure low infrastructure of campground	\$4,000
Electricity	Cost of metered electricity, generator, or solar gazebo dependent on site specifications	\$1,000 - \$4,000
Health & Safety	COVID Tests for new guests and regular testing for high risk service industry population, Cleaning supplies.	\$2,000
Insurance	Liability coverage for the temporary campground	\$600
Trash	Trash service for 4 months	\$600
Rent	Site fees paid to landowner for use of land 4 months	\$2,000
Camp Host	\$1,500/month for camp host to check registrations or contracting with cmp ground management company	\$6,000
Water Hauling	Dependent on site specifications	\$
Total Project Cost for 4 Months of Operation		\$30,000

Income

Discounted Fees	\$5/day for campers with a recent Chaffee County paystub for 90% of spaces.	\$21,600
Standard Fees	\$40/day for traditional campers for 10% of the spaces.	\$19,200
Local Business Sponsors	Sponsorships offering businesses designated sites for their employees. \$600/spot	\$2,000
Charitable Grants	Charitable grant funding from private foundations or nonprofit organizations for housing crisis and workforce support	\$18,000
Government	Government Grants for Crisis Housing and workforce support	\$10,000
Seed Funding for Project's First Year		\$30,000
Camping Fee Revenue held in reserve to Operate Sustainably in Year 2 and expand campground		\$40,800

FAQ

- Why is this needed? Due to the housing crisis and the global pandemic the workforce is struggling. Camping is our emergency housing in the current environment. The BLM and Forest service are redesigning their recreation plans and eliminating over 50% of our emergency housing. Meanwhile, the frontline workers are sleeping in their cars downtown in front of businesses, taking bird baths before work at their jobs, and dealing with the mental burden of keeping devices charged and making \$15 an hour. They cannot afford the extra costs of covid tests, quarantining, and any of the other duties that are required of them to keep the community safe.
- Can't businesses just pay more? The average take home pay of a server in Salida is \$15/hour. This is above the national average. When average rent is \$1,200 per month, individuals need to work 240 hours a month to afford a one bedroom apartment.
- Will this attract crime? Currently, employees are parking on the streets, in alleys and in other spots which puts them at risk for crime and poses hazards for the community. The campground model offers affordable, safe, parking sites for employed individuals through a registration process.
- Will the campground become a party spot? The campground will have the same rules and regulations as a commercial campground and campers must abide by to stay. Their camping privileges will be revoked if they do not follow the campground rules in regards to noise, alcohol, littering, etc.
- Why not make it free? Our philosophy is that paying a small fee allows the workers taking advantage of the campground discount to invest in a solution for themselves and others while preserving the value of the services offered. The fees, though nominal \$150/site/month, will provide a sustainable source of funding for this project in the future. Solidarity not charity.

This is just an idea, we need help to make it a reality...

This project could provide rental subsidies for the workforce

We need

- **land for 4 months**
- **project funding \$50,000**
- **Expedite major impact review**

80 campsites

1/2 reserved for workforce

- $40 \times 5 = \$200$ day
- $\times 30 = \$6,000$ month
- $\times 4 = \$24,000$

tourists

- $40 \times 40 = \$1,600$ day
- $\times 30 = \$48,000$ month
- $\times 4 = \$192,000$

Thank you for your time