

GENERAL NOTES

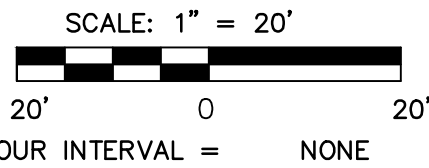
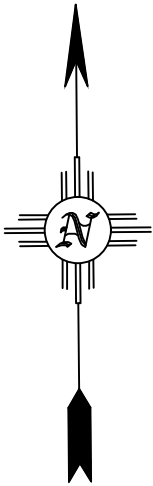
- 1. ALL METES AND BOUNDS ARE BASED ON THE MEASURED VALUES FROM THE AMBROSE PLAT, RECEPTION NUMBER 350696

DEVELOPMENT PLAN NOTES

TOTAL LOT AREA	1.712 ACRES
ZONING	R2 MEDIUM DENSITY RESIDENTIAL
NUMBER OF LOTS	8
TYPICAL LOT DIMENSIONS	45 X 161
TYPICAL LOT AREA	+/- 7245 SF
NUMBER ON-STREET PARKING SPACES	14
NUMBER OFF-STREET PARKING SPACES INCLUDING GARAGES	32

LEGEND

	EXISTING PROPERTY LINE
	PROPOSED PROPERTY LINE
	SETBACK OR EASEMENT
	EROSION CONTROL MAT
	ADA ACCESS RAMP MAX 1:12 SLOPE



RECORD DRAWINGS

THIS RECORD DOCUMENT HAS BEEN PREPARED BASED ON THE BEST AVAILABLE INFORMATION AS PROVIDED BY OTHERS. WALKER ENGINEERING CERTIFIES THAT THE INFORMATION SHOWN IS A REASONABLE DOCUMENTATION OF THE FINAL CONSTRUCTION.

MOREY E. WALKER, P.E. 32033 DATE

HOLMAN AVE.

Civil Engineering • Water Resources • Traffic Engineering

W. E. Walker Engineering

905 Camino Sierra Vista, • Santa Fe, NM 87505

505-820-7890
FAX 505-820-3539
E-MAIL: civil@walkerengineering.net

No.	REVISION	BY	APP.	DATE

PROJECT:	DESIGNED BY:	A.E.R.
FILE:	DRAWN BY:	A.E.R.
DATE:	CHECKED BY:	M.E.W.
SCALE:	10-22-20	AS NOTED

PROJECT:

CITY REVIEW

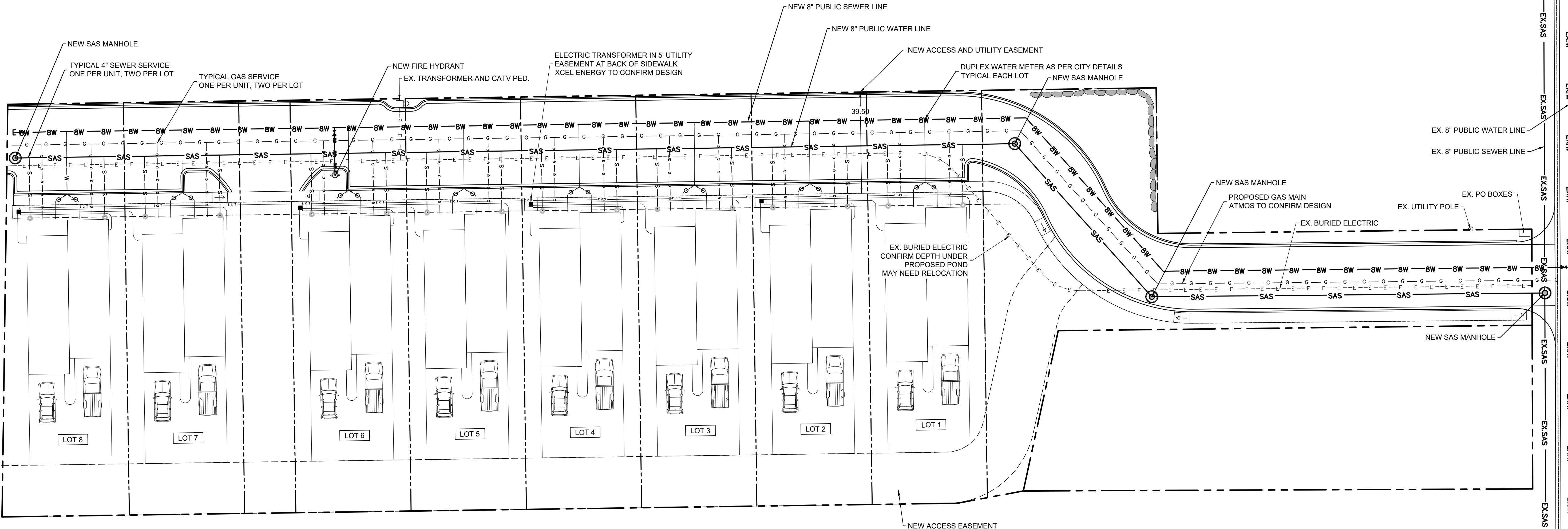
DEPARTMENT	SIGN-OFF	DATE
WASTEWATER		
WATER		
P.W. ENGINEERING		
TRAFFIC		
FIRE DEPARTMENT		
SOLID WASTE		
LANDSCAPE		
TRAILS/OPEN SPACE		
SUBDIVISION REVIEW		

SHEET NO.

C1

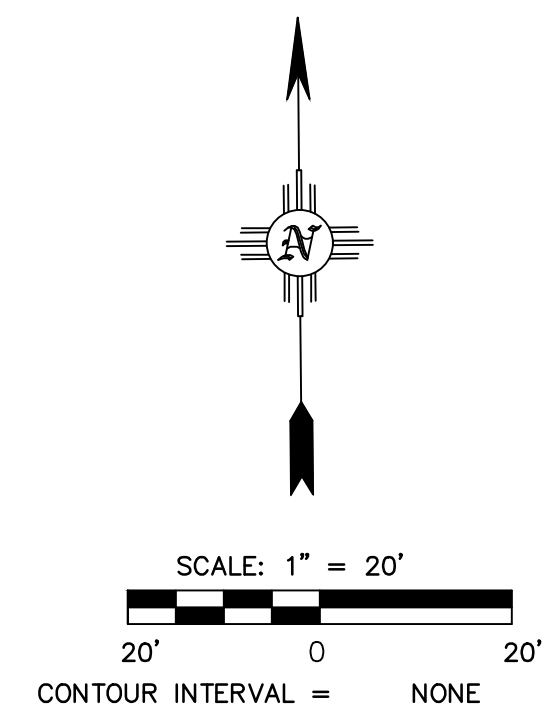
HOLMAN AVENUE
SUBDIVISION

DEVELOPMENT PLAN



GENERAL NOTES

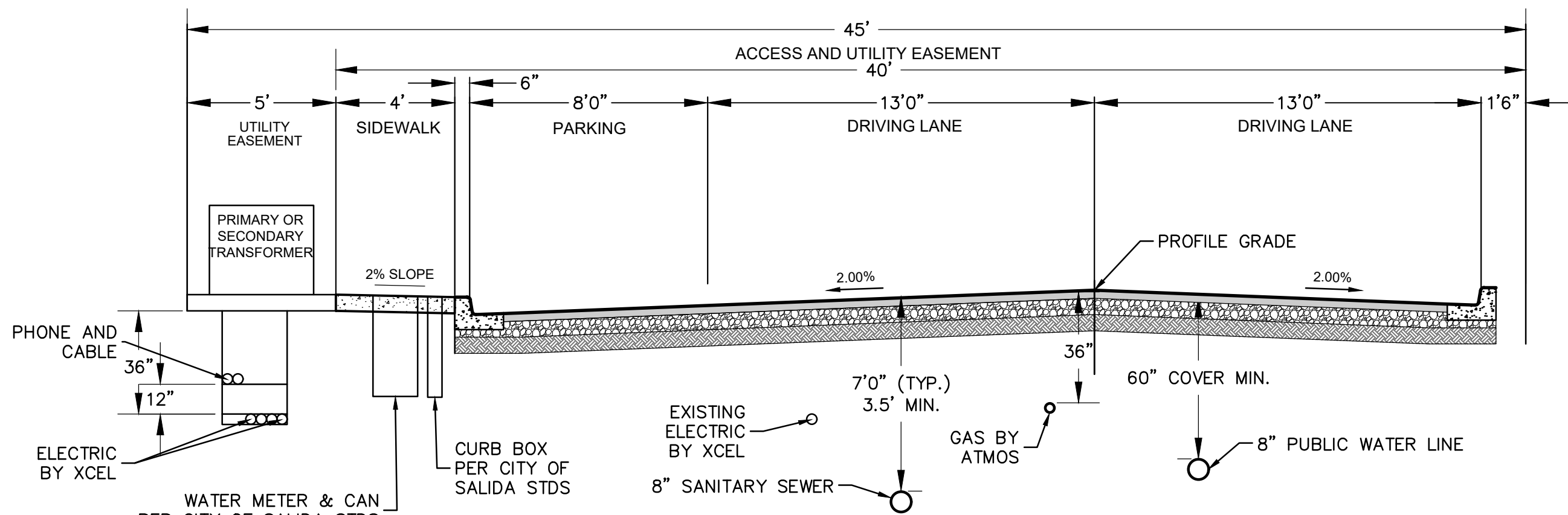
1. ALL METES AND BOUNDS ARE BASED ON THE MEASURED VALUES FROM THE AMBROSE PLAT, RECEPTION NUMBER 350696



RECORD DRAWINGS

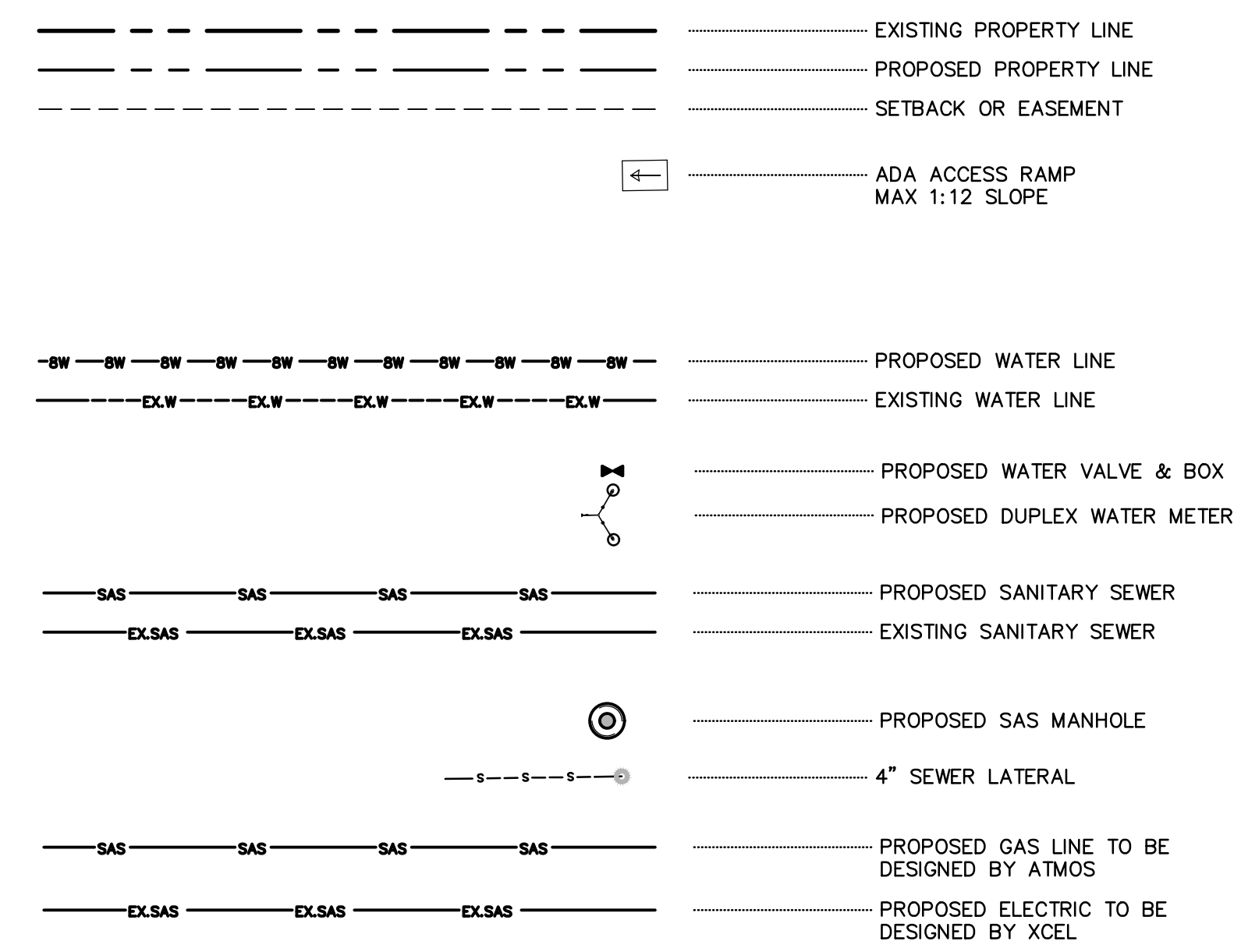
THIS RECORD DOCUMENT HAS BEEN PREPARED BASED ON THE BEST AVAILABLE INFORMATION AS PROVIDED BY OTHERS. WALKER ENGINEERING CERTIFIES THAT THE INFORMATION SHOWN IS A REASONABLE DOCUMENTATION OF THE FINAL CONSTRUCTION.

MOREY E. WALKER, P.E. 32033 DATE



TYPICAL STREET AND UTILITY SECTION
NOT TO SCALE

LEGEND



Civil Engineering • Water Resources • Traffic Engineering

W•E Walker Engineering

905 Camino Sierra Vista, • Santa Fe, NM 87505

505-820-7890
FAX 505-820-3539
E-MAIL: civil@walkerengineering.net

No.	REVISION	BY	APP.	DATE

PROJECT:	DESIGNED BY:	A.E.R.
FILE:	DRAWN BY:	A.E.R.
DATE:	CHECKED BY:	M.E.W.
SCALE:	10-22-20	AS NOTED

PROJECT:

HOLMAN AVENUE
SUBDIVISION

SHEET TITLE:

DEVELOPMENT PLAN

CITY REVIEW	DATE
DEPARTMENT	
WASTEWATER	
WATER	
PW ENGINEERING	
TRAFFIC	
FIRE DEPARTMENT	
SOLID WASTE	
LANDSCAPE	
TRAILS/OPEN SPACE	
SUBDIVISION REVIEW	

SHEET NO.

C2