

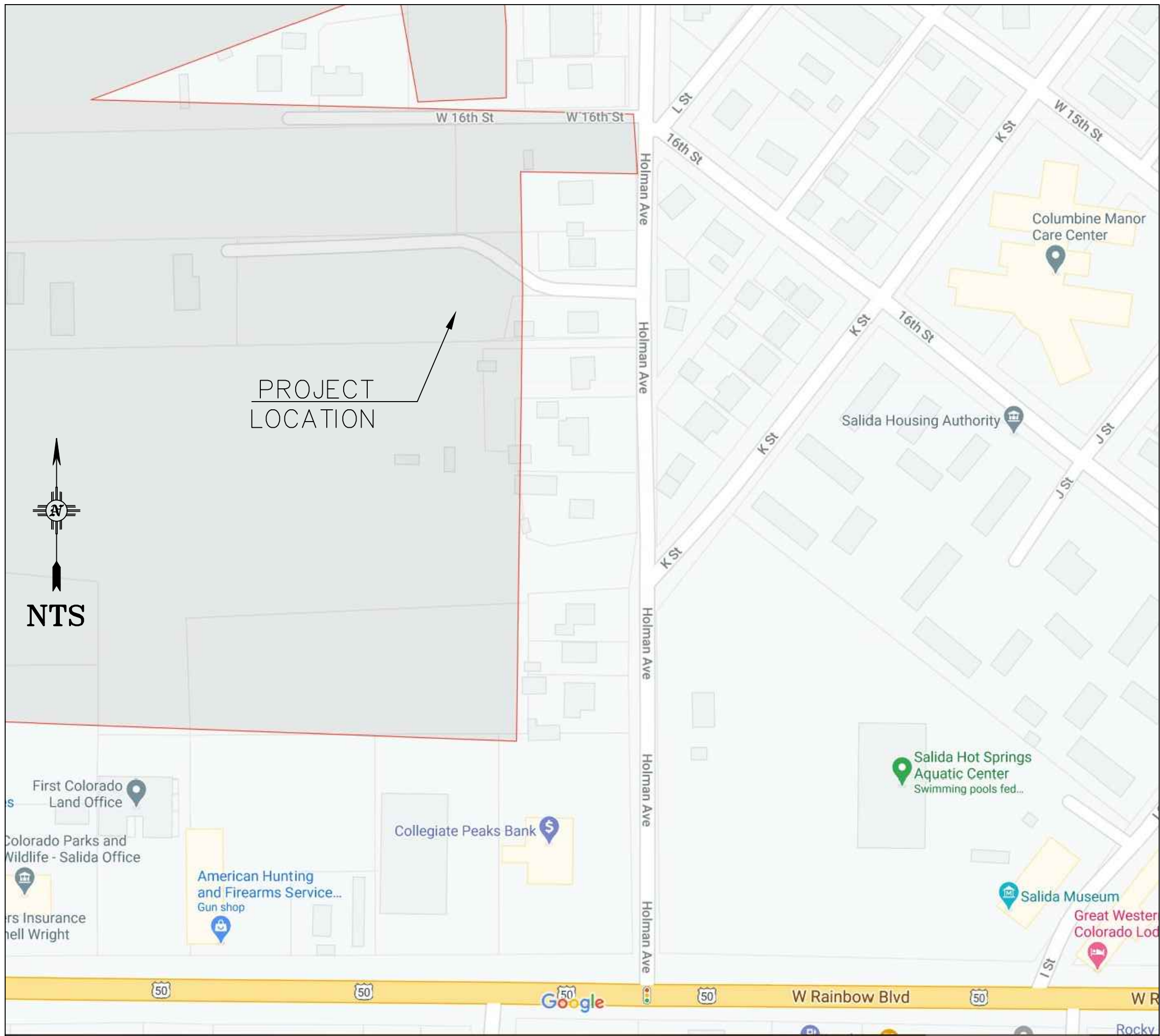
HOLMAN COURT SUBDIVISION

LOT 2 OF AMBROSE SUBDIVISION

SALIDA, COLORADO

80% SET

VICINITY MAP



SHEET LIST TABLE	
NUMBER	SHEET TITLE
C	COVER
C1	EXISTING CONDITIONS
C2	OVERALL PLAN
C3	OVERALL UTILITY
C4	GRADING
C5	PRIVATE MAIN ACCESS ROAD
C6	ACCESS EASEMENT (ALLEY)
C7	PUBLIC SANITARY SEWER
C8	PUBLIC WATER
C9	DETAILS
C10	CITY DETAILS
C11	CITY DETAILS
C12	CITY DETAILS
C13	CITY DETAILS

HOLMAN COURT SUBDIVISION
SALIDA, CO LORADO

CONSULTANTS

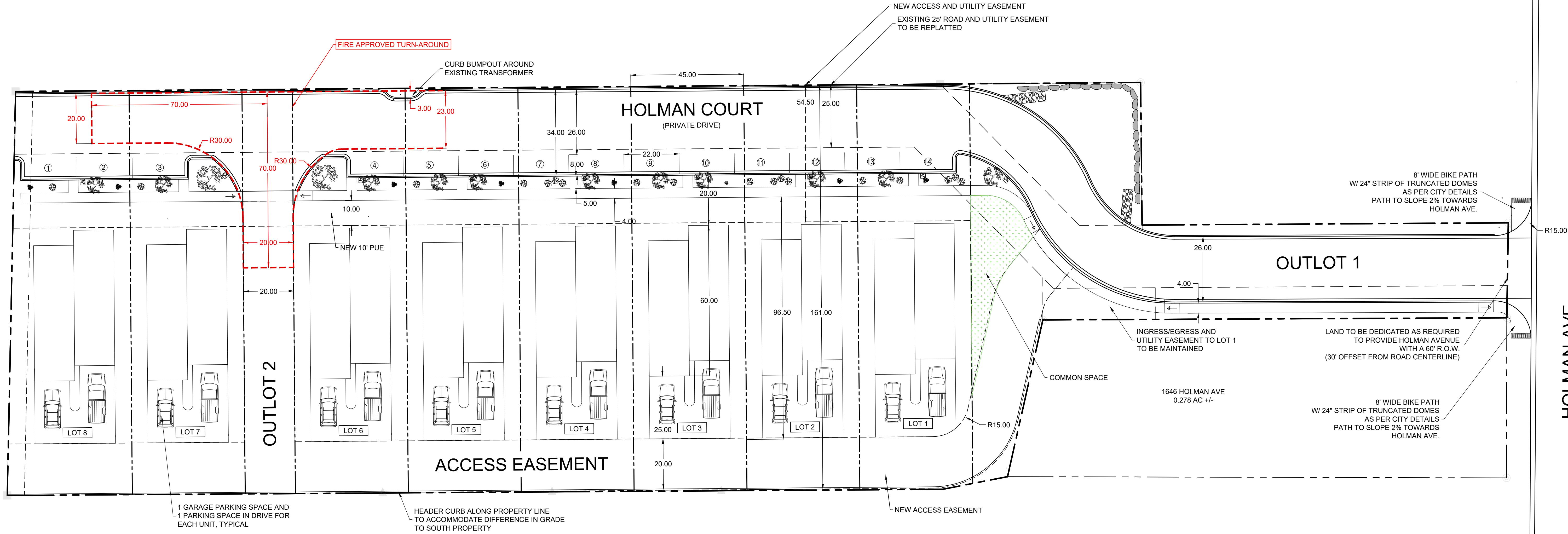
ENGINEER
Walker Engineering
905 Camino Sierra Vista Santa Fe, NM 87505
505-820-7990 morey@walkerengineering.net Fax:505-820-3539

CONSULTANT
Land Water Concepts
Salida, Colorado
505-690-5873
andy@lwconcepts.com

12/28/2020

SHEET NO.

C



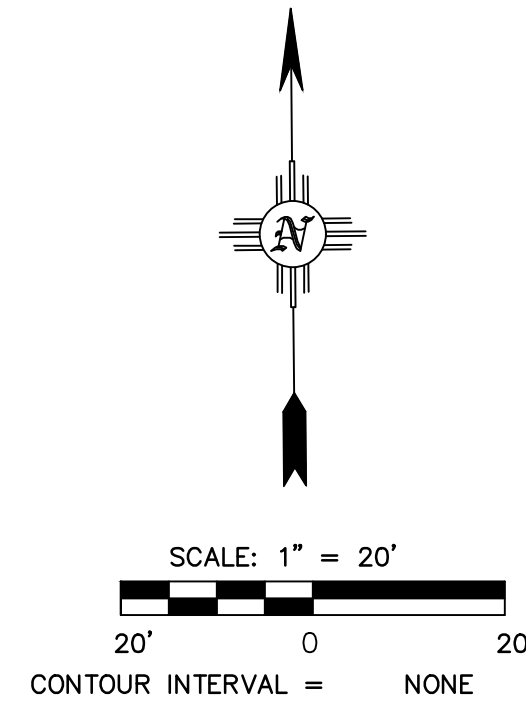
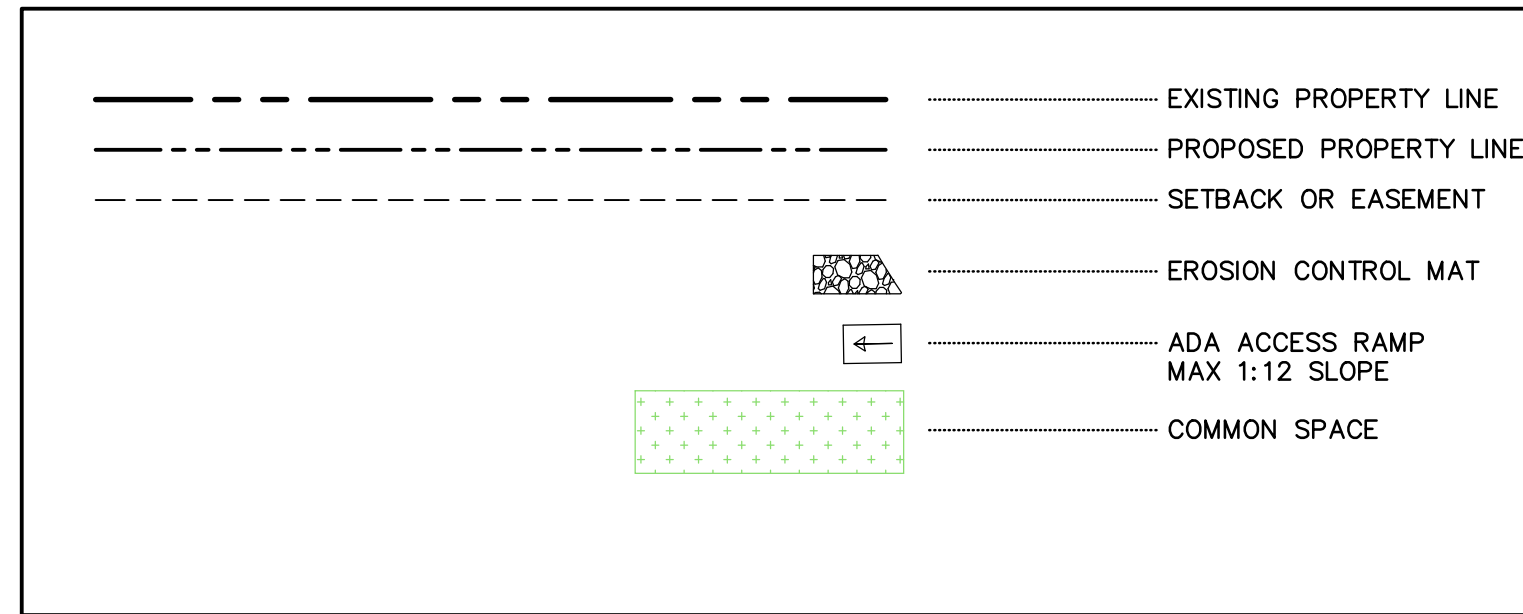
GENERAL NOTES

1. ALL METES AND BOUNDS ARE BASED ON THE MEASURED VALUES FROM THE AMBROSE PLAT, RECEPTION NUMBER 350696

DEVELOPMENT PLAN NOTES

TOTAL LOT AREA	1.712 ACRES
ZONING	R2 MEDIUM DENSITY RESIDENTIAL
NUMBER OF LOTS	8
TYPICAL LOT DIMENSIONS	45 X 161
TYPICAL LOT AREA	+/- 7245 SF
NUMBER ON-STREET PARKING SPACES	14
NUMBER OFF-STREET PARKING SPACES INCLUDING GARAGES	32

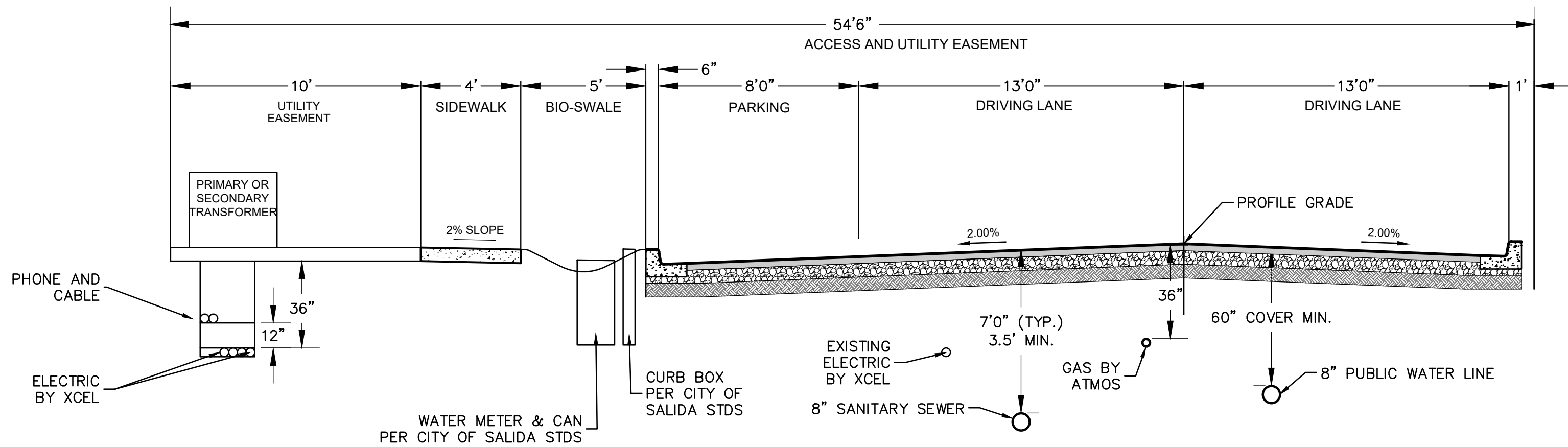
LEGEND



RECORD DRAWINGS

THIS RECORD DOCUMENT HAS BEEN PREPARED BASED ON THE BEST AVAILABLE INFORMATION AS PROVIDED BY OTHERS. WALKER ENGINEERING CERTIFIES THAT THE INFORMATION SHOWN IS A REASONABLE DOCUMENTATION OF THE FINAL CONSTRUCTION.

MOREY E. WALKER, P.E. 32033 DATE



HOLMAN COURT (PRIVATE DRIVE)
TYPICAL STREET AND UTILITY SECTION
NOT TO SCALE

HOLMAN AVE.

Civil Engineering • Water Resources • Traffic Engineering
W•E Walker Engineering
905 Camino Sierra Vista, • Santa Fe, NM 87505
505-820-7990
FAX 505-820-3530
E-MAIL: civil@walkerengineering.net

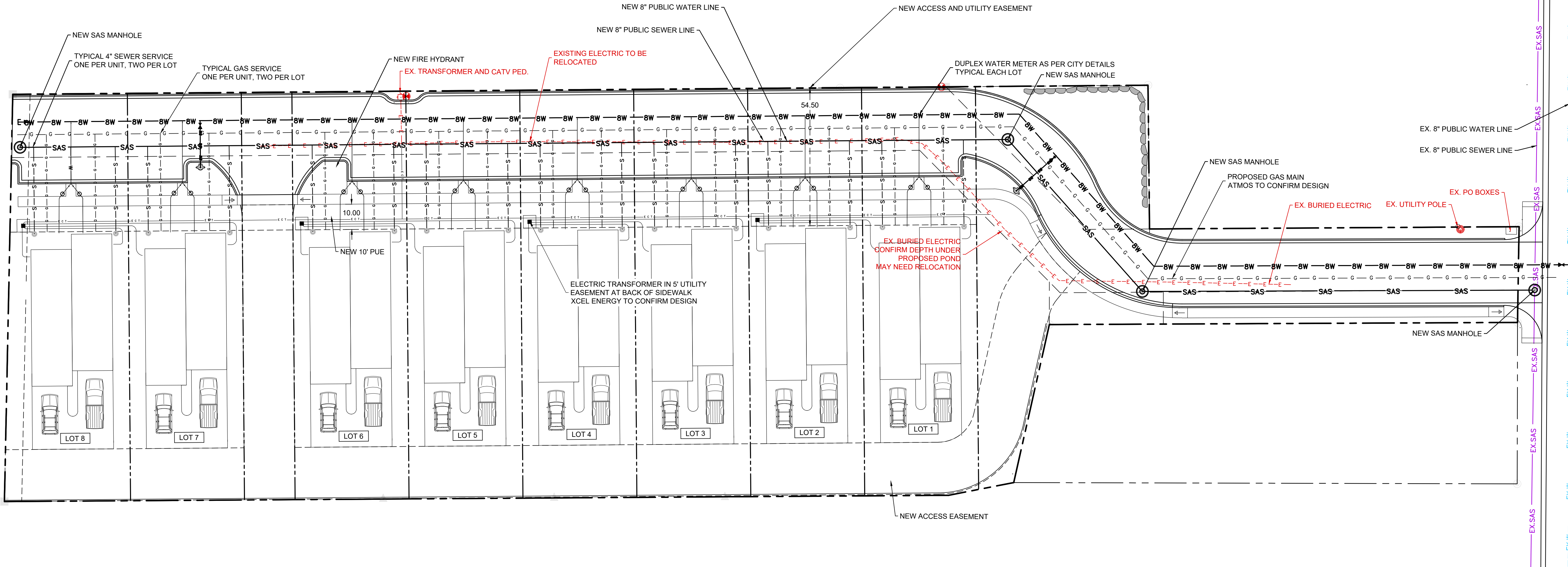
No.	REVISION	BY	APP.	DATE
PROJECT:	DESIGNED BY:			
FILE:	DRAWN BY:			
DATE:	12/28/20	CHECKED BY:		
SCALE:				

HOLMAN COURT
SUBDIVISION
OVERALL PLAN

CITY REVIEW	DATE
DEPARTMENT	
WATER	
WASTEWATER	
TRAFFIC	
FW ENGINEERING	
TRAILS/OPEN SPACE	
LANDSCAPE	
SOLID WASTE	
EROSION CONTROL	
SUBDIVISION REVIEW	

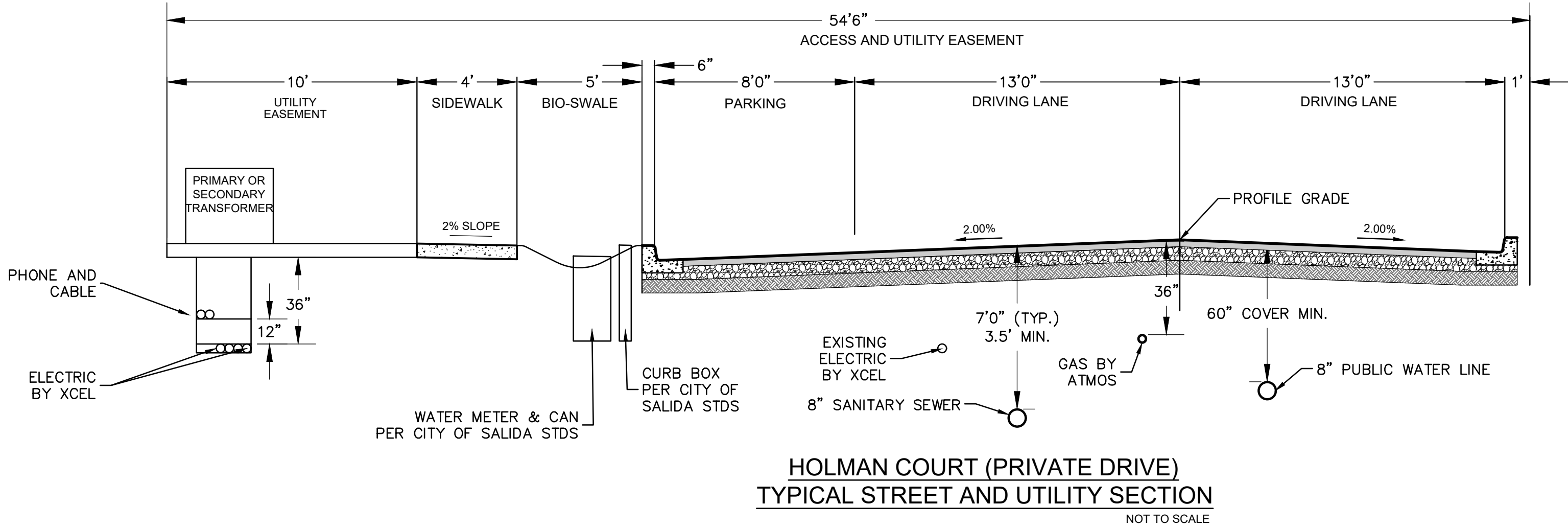
SHEET NO.

C2

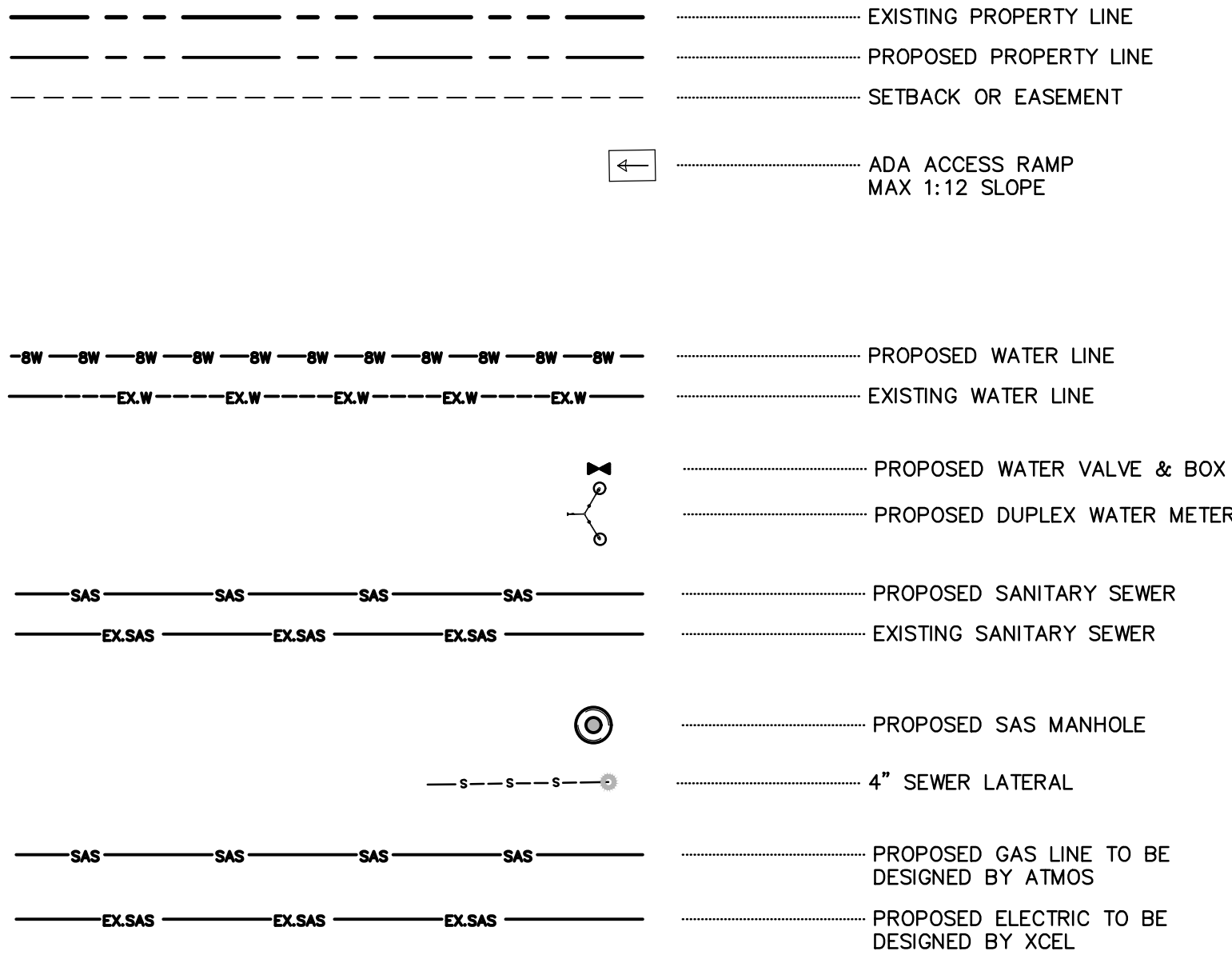


GENERAL NOTES

1. ALL METES AND BOUNDS ARE BASED ON THE MEASURED VALUES FROM THE AMBROSE PLAT, RECEPTION NUMBER 350696



LEGEND



RECORD DRAWINGS

THIS RECORD DOCUMENT HAS BEEN PREPARED BASED ON THE BEST AVAILABLE INFORMATION AS PROVIDED BY OTHERS. WALKER ENGINEERING CERTIFIES THAT THE INFORMATION SHOWN IS A REASONABLE DOCUMENTATION OF THE FINAL CONSTRUCTION.

MOREY E. WALKER, P.E. 32033 DATE

Civil Engineering • Water Resources • Traffic Engineering

W•E Walker Engineering

905 Camino Sierra Vista, • Santa Fe, NM 87505

505-820-7990
FAX 505-7650-3539
E-MAIL: civil@walkerengineering.net

No.	REVISION	BY	APP.	DATE
PROJECT:	DESIGNED BY:			
FILE:	DRAWN BY:			
DATE:	CHECKED BY:	12/28/20		
SCALE:				

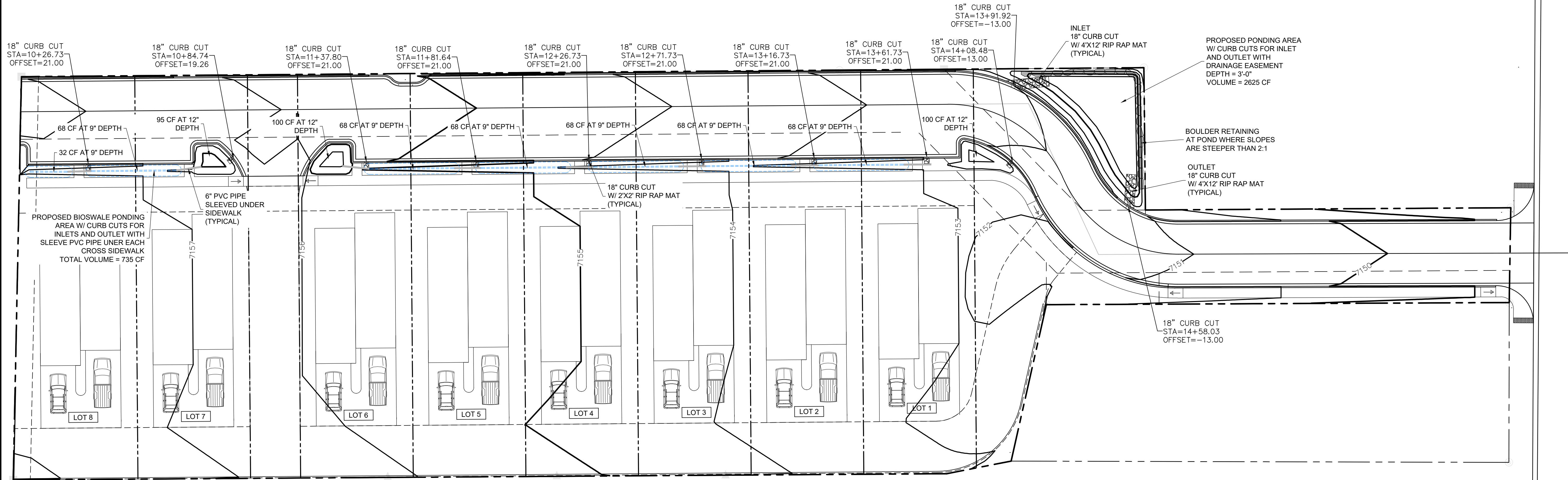
HOLMAN COURT
SUBDIVISION

OVERALL UTILITY

CITY REVIEW		DATE
DEPARTMENT	SIGN-OFF	
WATER		
WASTE WATER		
TRAFFIC		
PW ENGINEERING		
TRAIL/RIGHT OF WAY		
LANDSCAPE		
SOLID WASTE		
LANDSCAPE/OPEN SPACE		
SUBDIVISION REVIEW		

SHEET NO.

C3



LEGEND

- EXISTING PROPERTY LINE
- PROPOSED PROPERTY LINE
- SETBACK OR EASEMENT
- EROSION CONTROL MAT
- ADA ACCESS RAMP
MAX 1:12 SLOPE
- PROPOSED BIO-SWALE
- EXISTING CONTOURS
- EXISTING CONTOURS



SCALE: 1" = 20'
20' 0 20'
CONTOUR INTERVAL = NONE

RECORD DRAWINGS

THIS RECORD DOCUMENT HAS BEEN PREPARED BASED ON THE BEST AVAILABLE INFORMATION AS PROVIDED BY OTHERS. WALKER ENGINEERING CERTIFIES THAT THE INFORMATION SHOWN IS A REASONABLE DOCUMENTATION OF THE FINAL CONSTRUCTION.

MOREY E. WALKER, P.E. 32033 DATE

Civil Engineering • Water Resources • Traffic Engineering

W•E Walker Engineering

905 Camino Sierra Vista, • Santa Fe, NM 87505

505-820-7990
FAX 505-820-3539
E-MAIL: civil@walkerengineering.net

No.	REVISION	BY	APP.	DATE

PROJECT:

DESIGNED BY:

FILE:

DATE:

12/28/20

CHECKED BY:

SCALE:

PROJECT:

HOLMAN COURT SUBDIVISION

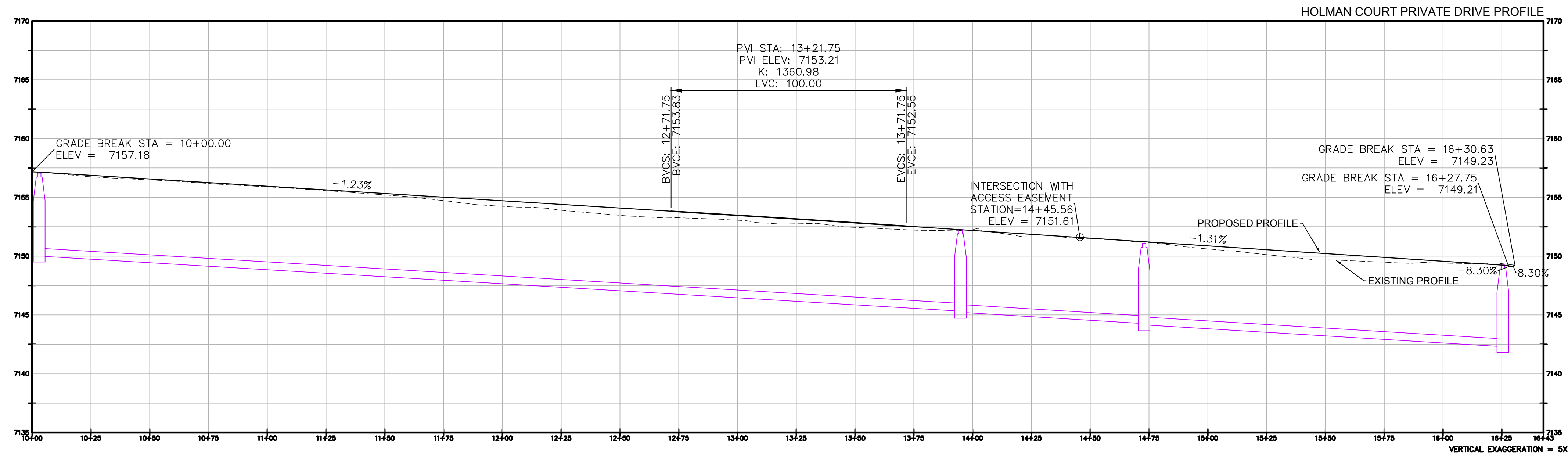
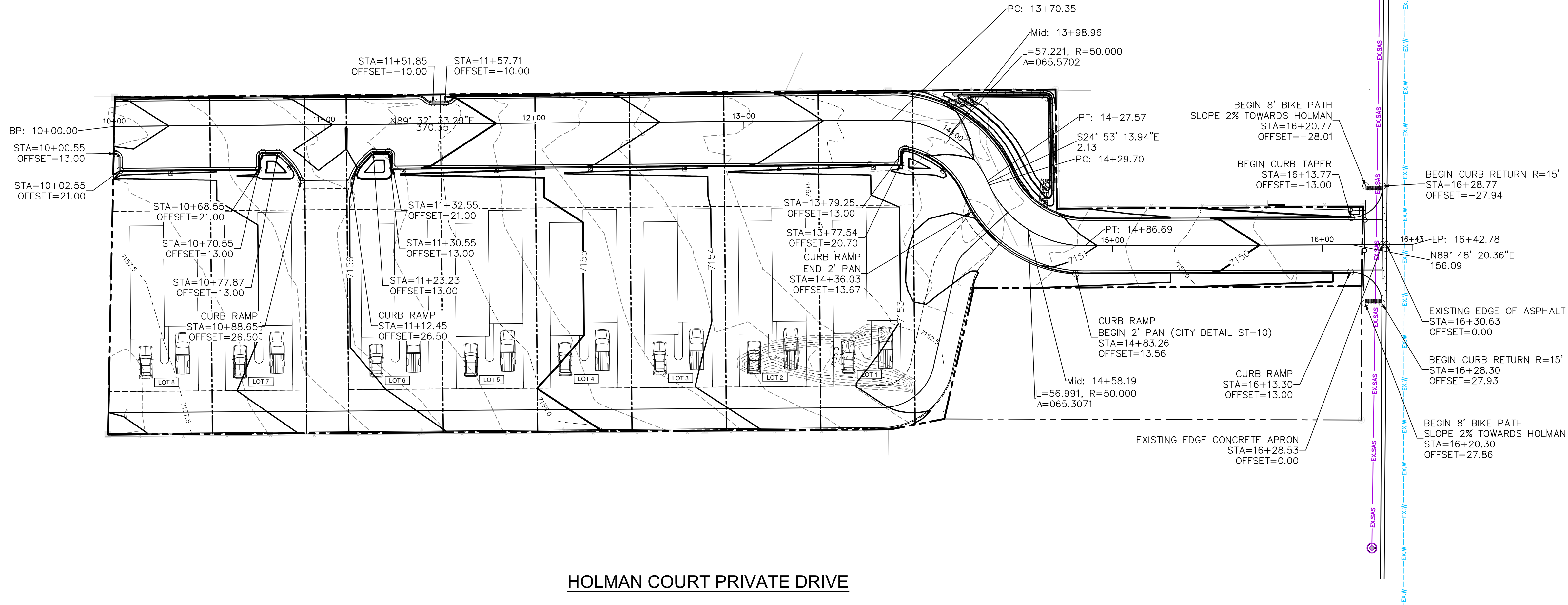
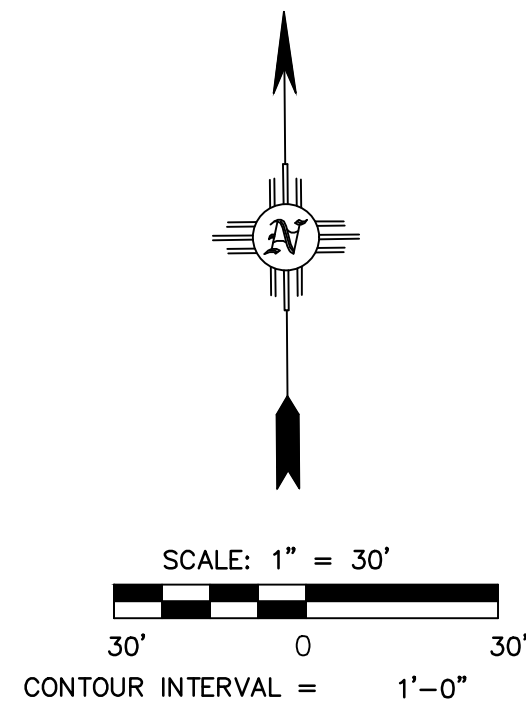
SHEET TITLE:

GRADING

CITY REVIEW		DATE
DEPARTMENT	SIGN-OFF	
WASTEWATER		
WATER		
PW ENGINEERING		
TRAFFIC		
TRAIL DEVELOPMENT		
SOLID WASTE		
LANDSCAPE		
TRAILS/OPEN SPACE		
SUBDIVISION REVIEW		

SHEET NO.

C4



Civil Engineering • Water Resources • Traffic Engineering	
W•E Walker Engineering	
905 Camino Sierra Vista, • Santa Fe, NM 87505	
505-820-7990	
FAX 505-820-3530	
E-MAIL: civil@walkerengineering.net	

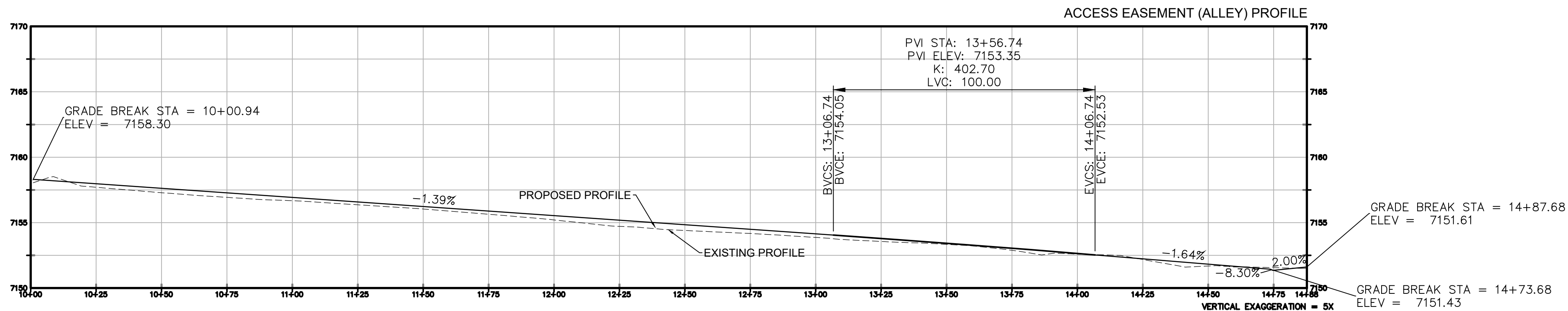
No.	REVISION	BY	APP.	DATE

PROJECT:	DESIGNED BY:
FILE:	DRAWN BY:
DATE: 12/28/20	CHECKED BY:
SCALE:	

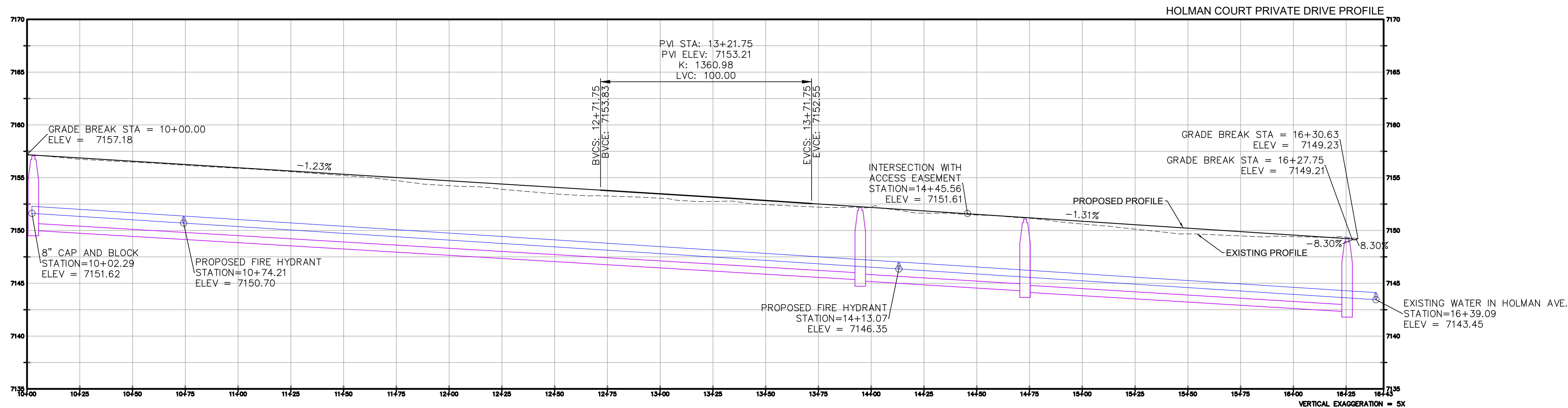
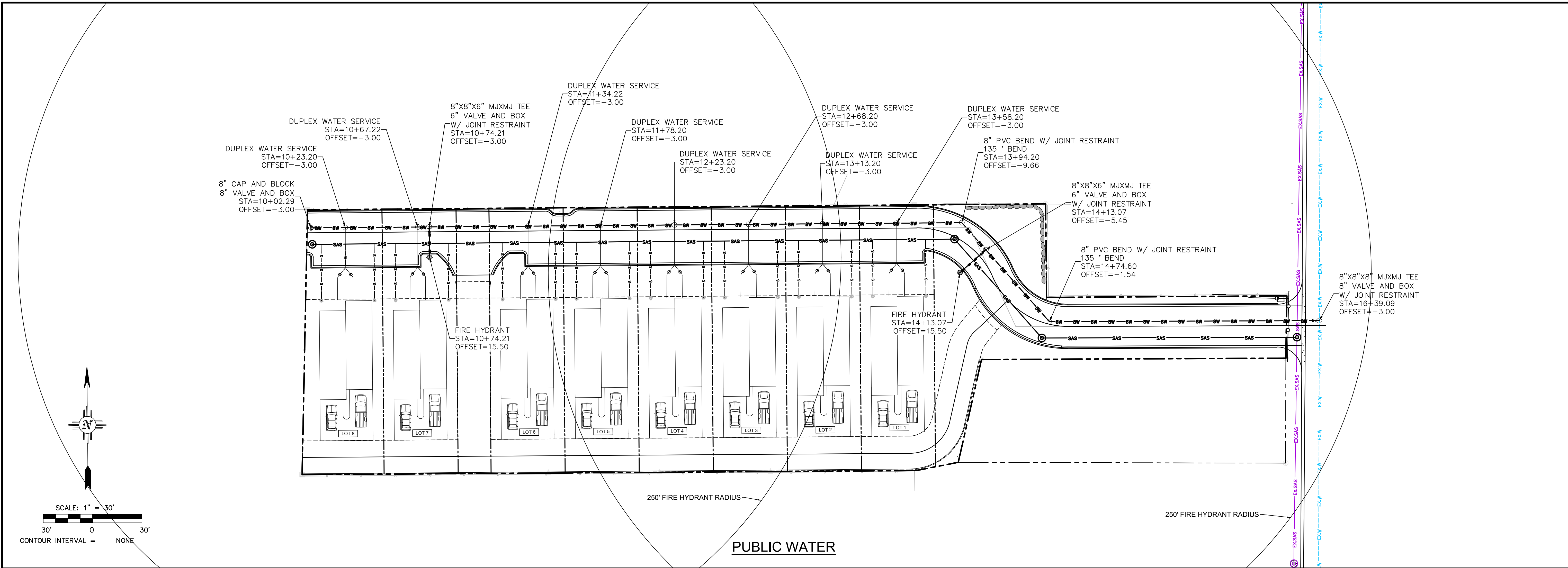
PROJECT: HOLMAN COURT SUBDIVISION	
SHEET TITLE: HOLMAN COURT PRIVATE DRIVE	

CITY REVIEW	
DEPARTMENT	DATE
WASTEWATER	
WATER	
PW ENGINEERING	
TRAFFIC	
FIELD PARTMENT	
SOLID WASTE	
LANDSCAPE	
TRAILS/OPEN SPACE	
SUBDIVISION REVIEW	

SHEET NO.
C5



<div>C6</div> <div>SHEET NO.</div>		CITY REVIEW			PROJECT:		<div>HOLMAN COURT</div> <div>SUBDIVISION</div>				<div>W•E</div> <div>Walker Engineering</div> <div>905 Camino Sierra Vista, • Santa Fe, NM. 87505</div>		Civil Engineering • Water Resources • Traffic Engineering			
		DEPARTMENT	SIGN-OFF	DATE	No.	REVISION							BY	DATE		
		WASTEWATER														
		WATER														
		PW ENGINEERING														
		TRAFFIC														
		FIRE DEPARTMENT														
		SOLID WASTE														
		LANDSCAPE														
		TRAILS/OPEN SPACE														
SUBDIVISION REVIEW																
		SHEET TITLE:			ACCESS EASEMENT (ALLEY)						DESIGNED BY:		505-820-7990 FAX 505-820-3539 E-MAIL civil@walkerengineering.net			



Civil Engineering • Water Resources • Traffic Engineering

W•E Walker Engineering
905 Camino Sierra Vista, • Santa Fe, NM 87505
505-820-7990
FAX 505-820-3539
E-MAIL: civil@walkerengineering.net

No.	REVISION	BY	APP.	DATE

PROJECT:

FILE:

DATE:

SCALE:

DESIGNED BY:

DRAWN BY:

CHECKED BY:

12/28/20

PROJECT:

SHEET TITLE:

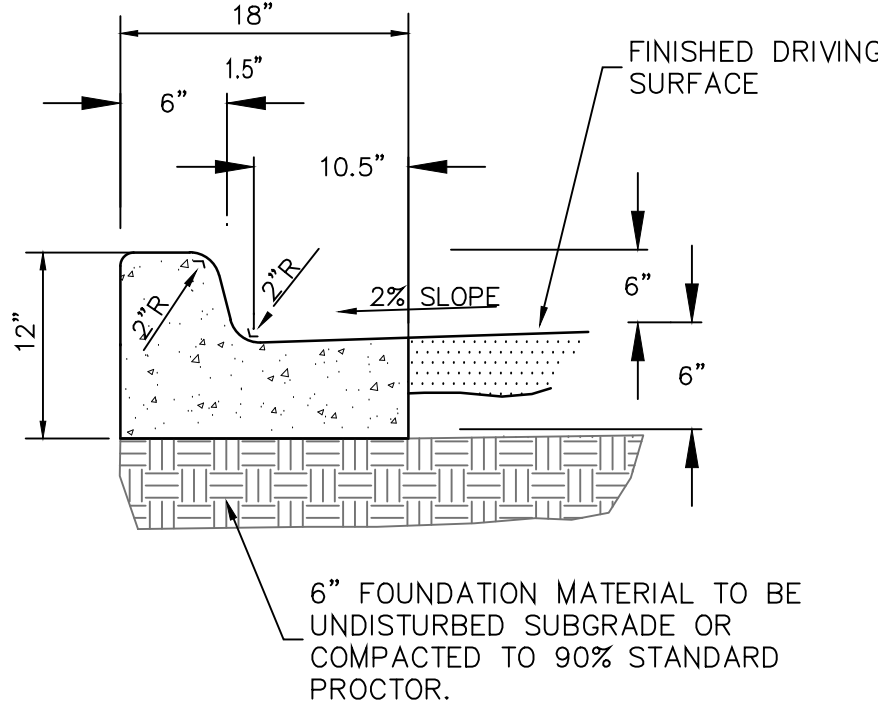
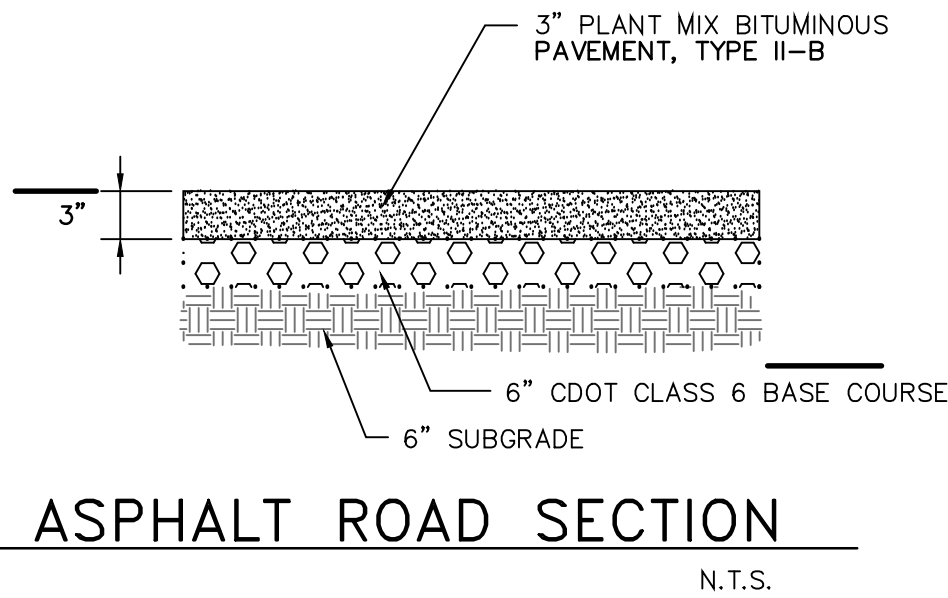
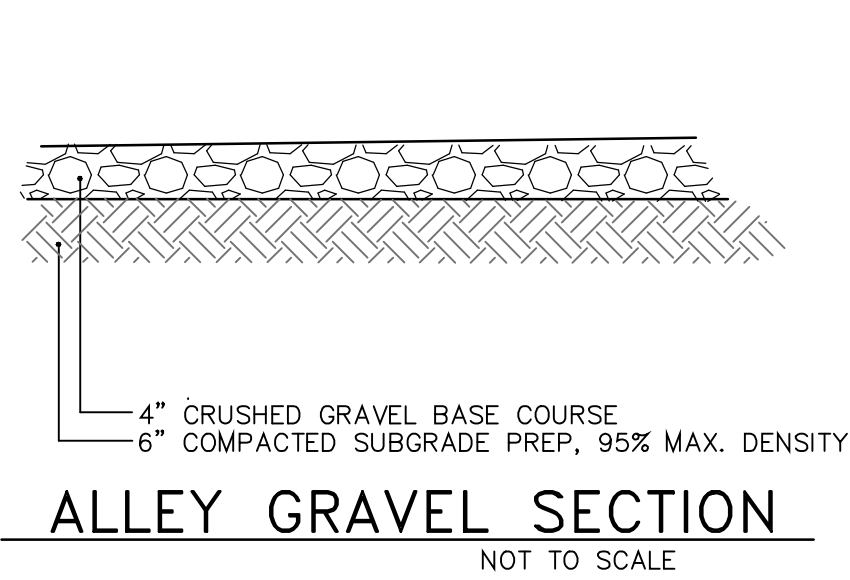
HOLMAN COURT SUBDIVISION

PUBLIC WATER

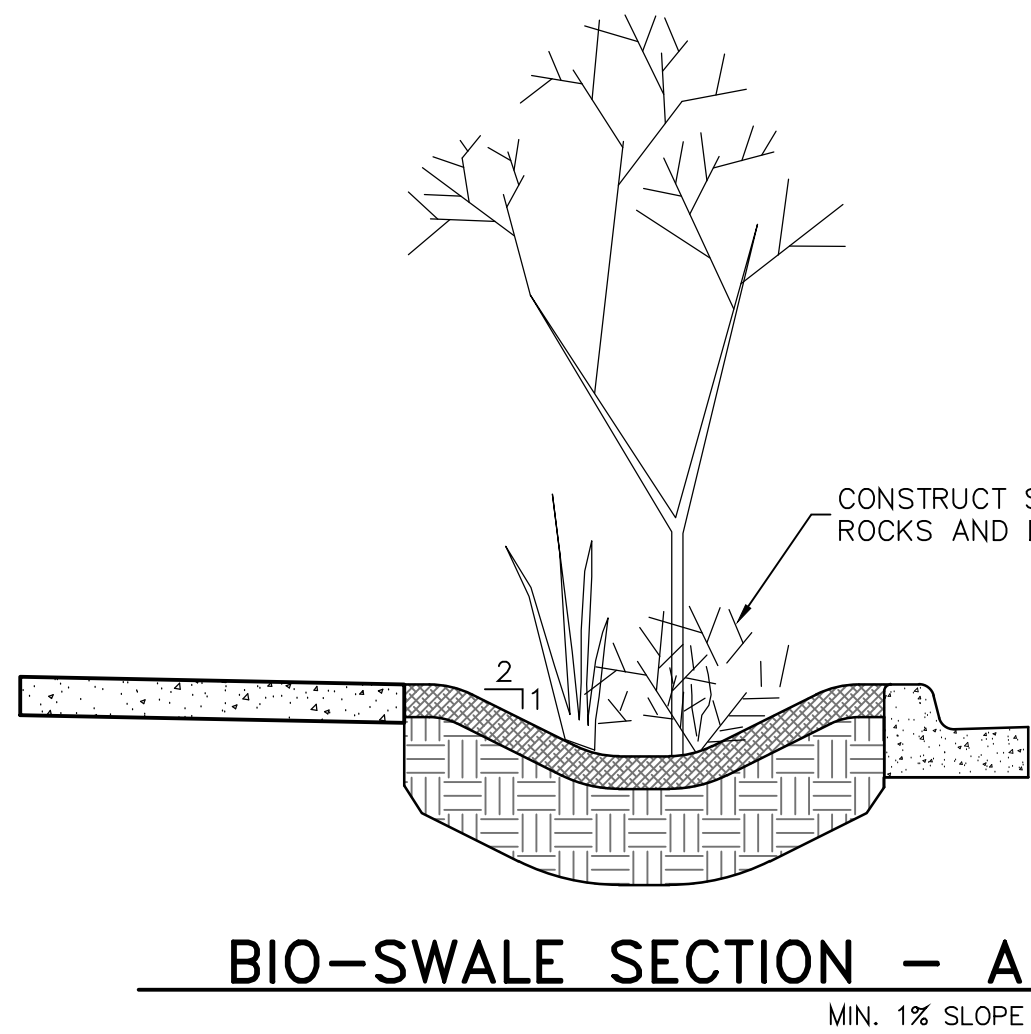
CITY REVIEW		DATE
DEPARTMENT	SIGN-OFF	
WASTEWATER		
WATER		
PW ENGINEERING		
TRAFFIC		
PLANNING		
PERMITTING		
SOLID WASTE		
LANDSCAPE		
TRAILS/OPEN SPACE		
SUBDIVISION REVIEW		

SHEET NO.

C8



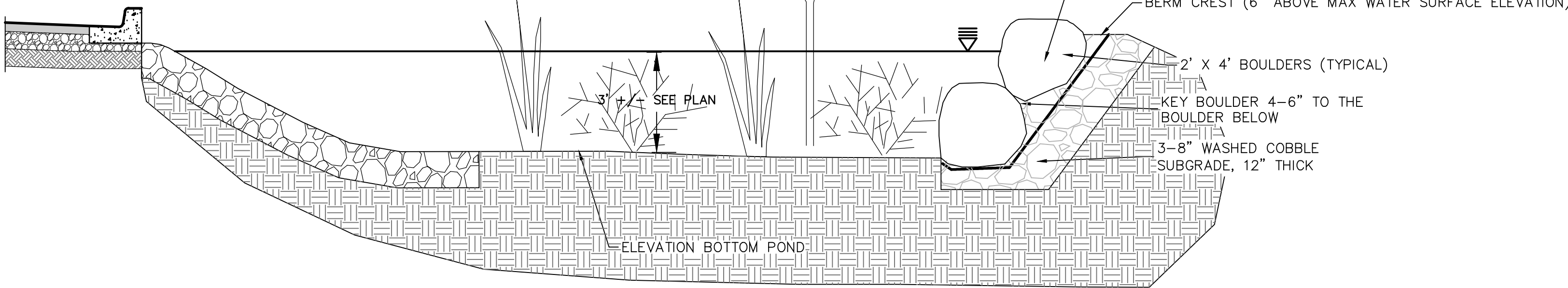
6" STANDARD CURB & GUTTER
BASED ON CDOT TYPE 2 CURB AND GUTTER (M-609-1) – NOT TO SCALE



- SUGGESTED PLANT MIX**
- PERENNIAL FLOWERS
WINE CUPS OR POPPY MALLOW
LAVENDER
SUNSET HYSSOP
MAXIMILLIAN SUNFLOWER
CHOCOLATE FLOWER
- GRASSES
GIANT SACATON GRASS
BLUE GRAMA
SWITCHGRASS
- SHRUBS
APACE PLUMB
BABY BLUE RABBITBRUSH
RUSSIAN SAGE
- TREES
HOT WINGS MAPLE
RADIANT CRAB APPLE

SUGGESTED PLANT MIX

THE PLANT MIX SHOWN HERE IS SUITABLE FOR WELL DRAINED SOILS THAT ARE LOW IN NUTRIENTS LIKE THOSE IN THIS AREA. MANY OF THESE PLANTS WILL ALSO THRIVE IN XERIC EXPOSURES. THIS PLANT MIX IS FOR PLAN REVIEW AND BIDDING ONLY. A FINAL LANDSCAPE PLAN AND SEED MIX TO BE SUBMITTED BY THE CONTRACTOR FOR REVIEW BY THE PROJECT OWNER.



POND SECTION WITH OVERFLOW – B
NTS

UTILITY NOTES

- LAND AND WATER CONCEPTS AND WALKER ENGINEERING. WAIVE ANY AND ALL RESPONSIBILITY, AND ARE NOT LIABLE FOR PROBLEMS WHICH ARISE FROM FAILURE TO FOLLOW THESE PLANS, SPECIFICATIONS AND THE DESIGN INTENT THEY CONVEY OR FOR PROBLEMS WHICH ARISE FROM OTHERS OR OTHERS' FAILURE TO OBTAIN AND/OR FOLLOW THE ENGINEER'S GUIDANCE WITH RESPECT TO ANY ERRORS, OMISSIONS, INCONSISTENCIES, AMBIGUITIES OR CONFLICTS.
- THE CONTRACTOR SHALL NOT COMMENCE CONSTRUCTION WITHOUT CONSTRUCTION PLAN APPROVAL BY ALL RELEVANT AGENCIES. A COPY OF THE APPROVED PLANS SHALL BE AVAILABLE AT THE CONSTRUCTION SITE AT ALL TIMES DURING WORKING HOURS.
- THE ENGINEER IS TO BE NOTIFIED PRIOR TO ANY PLAN CHANGES OR ON-SITE DESIGN MODIFICATIONS. ALL PLAN CHANGES MUST BE APPROVED BY THE ENGINEER.
- ALL EXISTING TOPOGRAPHIC AND SURVEY DATA SHOWN ON THESE PLANS HAS BEEN OBTAINED AND CERTIFIED BY OTHERS. THE ENGINEER HAS UNDERTAKEN NO FIELD VERIFICATION OF THIS TOPOGRAPHIC INFORMATION, AND MAKES NO REPRESENTATION PERTAINING THERETO AND THEREFORE ASSUMES NO RESPONSIBILITY OR LIABILITY.
- THE CONTRACTOR SHALL CONFINE HIS OPERATIONS TO THE CONSTRUCTION LIMITS OF THE PROJECT AND IN NO WAY SHALL ENCROACHMENT OCCUR ONTO ADJACENT PROPERTIES UNLESS LEGAL EASEMENTS ARE OBTAINED. ALL FILL AND CUT SLOPES SHALL BE SETBACK FROM THE PROPERTY LINE IN ACCORDANCE WITH CHAPTER 70 OF THE UNIFORM BUILDING CODE. THE CONTRACTOR WILL BE HELD RESPONSIBLE FOR ANY AGREEMENTS NECESSARY OR

- DAMAGE CAUSED BY CONSTRUCTION ACTIVITIES TO PUBLIC OR PRIVATE PROPERTY, INCLUDING UTILITIES.
- WORK SHALL COMPLY WITH ALL LOCAL, STATE, AND FEDERAL AGENCIES' LAWS, RULES, REGULATIONS, AND PERMITS. ALL INVESTIGATION BY REGULATORY AGENCIES, FAILURE TO COMPLY WITH THESE REGULATIONS IS SUBJECT TO LEGAL ENFORCEMENT ACTION.
 - COPIES OF PERMITS OBTAINED BY THE OWNER WILL BE PROVIDED TO THE CONTRACTOR. CONTRACTOR SHALL MAINTAIN COPIES OF ALL PERMITS ON THE SITE AT ALL TIMES.
 - THE CONTRACTOR SHALL BE RESPONSIBLE FOR THE LOCATION OF ALL EXISTING UTILITIES AND SHOULD NOT RELY SOLELY ON THESE CONSTRUCTION PLANS FOR UTILITY LOCATIONS. CONTRACTOR MUST COMPLETE ALL UTILITY LOCATES PRIOR TO CONSTRUCTION. UTILITY NOTIFICATION CENTER OF COLORADO (UNCC) 800-922-1987. DAMAGE TO ANY EXISTING UTILITIES IS THE RESPONSIBILITY OF THE CONTRACTOR.
 - IF PREVIOUSLY UNKNOWN ARCHEOLOGICAL MATERIALS ARE DISCOVERED DURING CONSTRUCTION ACTIVITIES, WORK SHALL STOP IMMEDIATELY AND THE ENGINEER AND OWNER SHALL BE CONTACTED. THE STATE HISTORIC PRESERVATION OFFICE WILL THEN BE CONTACTED BY THE ENGINEER OR OWNER FOR CONSULTATION.
 - ALL APPROPRIATE SEDIMENT AND POLLUTION CONTROL MEASURES, AND BEST MANAGEMENT PRACTICES (BMP'S) SHALL BE IN PLACE TO MINIMIZE SEDIMENTATION. SEDIMENT

- AND EROSION CONTROLS SHALL BE INSTALLED IN ACCORDANCE WITH THE URBAN DRAINAGE AND FLOOD CONTROL DISTRICT GUIDELINES.
- CONTRACTOR SHALL BE WHOLLY RESPONSIBLE FOR THE DESIGN, IMPLEMENTATION, AND MAINTENANCE OF SEDIMENT AND EROSION CONTROLS IN CONFORMANCE WITH CONSTRUCTION STANDARDS AND THE REQUIREMENTS OF REGULATORY AGENCIES THROUGHOUT THE CONSTRUCTION PERIOD. THE ENGINEER WILL NOT BE ON-SITE TO APPROVE, REVIEW, OR MAINTAIN THE CONTROLS. STORM WATER MEASURES MAY BE REQUIRED TO BE INSTALLED AT ANY TIME DURING CONSTRUCTION.
 - BMP'S PLUS TEMPORARY SEDIMENT AND EROSION CONTROLS SHALL BE MAINTAINED TO BE FUNCTIONAL UNTIL THE SITE HAS REACHED FINAL STABILIZATION.
 - ALL WASTE MATERIAL AND/OR EXCESS EXCAVATION NOT USED AS PART OF THE WORK SHALL BE REMOVED FROM THE JOB SITE AND DISPOSED OF AT ACCEPTABLE LOCATIONS IN ACCORDANCE WITH ALL LOCAL, STATE AND FEDERAL REGULATIONS.
 - THE CONTRACTOR AT ALL TIMES DURING CONSTRUCTION SHALL PROVIDE WARNING SIGNS, BARRICADES, AND OTHER SAFETY DEVICES (INCLUDING TEMPORARY FENCING AROUND THE JOB SITE) TO PROTECT PUBLIC SAFETY AND HEALTH. CONSTRUCTION IN AND ADJACENT TO THE ROADWAY SHALL FOLLOW AN APPROVED TRAFFIC CONTROL PLAN COMPLETED BY THE CONTRACTOR. THE TRAFFIC CONTROL PLAN SHALL BE IN COMPLIANCE WITH THE MANUAL ON UNIFORM TRAFFIC CONTROL DEVICES. ALL HOLES AND TRENCHES SAFELY CORDONED OFF AND BACKFILLED, COMPACTED AND

- PATCHED AS SOON AS POSSIBLE AFTER COMPLETION AND ALL INSPECTIONS.
- THE CONSTRUCTION SURVEYOR SHALL VERIFY ALL BUILDING, PARKING AND SIDEWALK LOCATIONS AS WELL AS PROPOSED GRADES AND INVERT ELEVATIONS, FLOW LINES, ALIGNMENTS, SETBACKS AND TOPOGRAPHY PRIOR TO CONSTRUCTION.
 - CONSOLIDATED FLOW FROM THE POND OVERFLOWS CAN CREATE EROSION. ANNUAL MAINTENANCE OF THE POND BERMS, WEIRS AND OVERFLOWS IS REQUIRED. FURTHER STABILIZATION MEASURES MAY BE NECESSARY. LWC RECOMMENDS PERIODIC OBSERVATIONS BY THE HOME OWNER ASSOCIATION. IF EXCESS EROSION IS OBSERVED, PLEASE NOTIFY LAND AND WATER CONCEPTS FOR RECOMMENDATIONS.
 - CONSTRUCTION SHALL BE IN ACCORDANCE WITH CITY OF SALIDA STANDARD SPECIFICATIONS FOR CONSTRUCTION DATED JANUARY 2017.

- THE CONTRACTOR SHALL BE RESPONSIBLE FOR THE LOCATION OF ALL EXISTING UTILITIES AND SHOULD NOT RELY SOLELY ON THESE CONSTRUCTION PLANS FOR UTILITY LOCATIONS. CONTRACTOR MUST COMPLETE ALL UTILITY LOCATES PRIOR TO CONSTRUCTION. Utility Notification Center of Colorado (UNCC) 800-922-1987. DAMAGE TO ANY EXISTING UTILITIES IS THE RESPONSIBILITY OF THE CONTRACTOR.
- IT IS ASSUMED THAT ALL GAS LINES ARE TO BE INSTALLED BY ATMOS GAS AND ALL ELECTRIC LINES BY EXCEL ENERGY. ALL TRENCHING AND INSTALLATION TO BE COMPLETED ACCORDING TO ATMOS AND EXCEL REQUIREMENTS. LOCATION OF ELECTRIC PRIMARY, SECONDARY LINES AND ALL TRANSFORMER PROVIDED BY EXCEL. ALL ELECTRIC AND GAS LINES ARE SHOWN HERE FOR REFERENCE ONLY.
- CABLE AND TELEPHONE TO BE INSTALLED IN ACCORDANCE WITH THE LOCAL CABLE AND TELEPHONE PROVIDER. LOCATIONS ARE SHOWN FOR PLANNING PURPOSES ONLY.
- IF ANY OF THESE STANDARDS DIFFER FROM THE DESIGN IN THIS PLAN SET, CONTACT WALKER ENGINEERING AND LAND & WATER CONCEPTS FOR CLARIFICATION AND DIRECTION BEFORE CONTINUING.
- ALL PUBLIC WATER IMPROVEMENTS SHALL CONFORM TO THE CITY OF SALIDA CONSTRUCTION STANDARDS AND SPECIFICATIONS FOR WATER, SANITARY SEWER AND STREET, LATEST EDITION, AS WELL AS THE STANDARDS PROMULGATED BY THE WATER QUALITY

- CONTROL DIVISION OF THE COLORADO DEPARTMENT OF PUBLIC HEALTH AND BY THE UNI-BELL PVC PIPE ASSOCIATION. IF ANY OF THESE STANDARDS DIFFER FROM THE DESIGN IN THIS PLAN SET, CONTACT LAND AND WATER CONCEPTS FOR CLARIFICATION AND DIRECTION BEFORE CONTINUING.
- ALL UNDERGROUND WATERLINES SHALL BE PVC PRESSURE CLASS 235 AWWA C-900. ALL PVC WATER MAIN PIPE SHALL INCLUDE DETECTOR WIRE PER CSS.
 - ALL UNDERGROUND WATERLINES PIPING SHALL MAINTAIN A MINIMUM 5' BURY AND HAVE THRUST BLOCKS AT ALL DIRECTION CHANGES AND DEAD ENDS. THRUST BLOCKS AND RODDING TO BE INSTALLED PER NFPA #24. THRUST BLOCK DIMENSIONS FOR A 8" WATER LINE SHALL BE APPLIED TO THE PROJECT WATER MAINS. SEE DETAILS
 - ALL NEW WATER VALVES AND METERS THAT FALL WITHIN THE LIMITS OF ANY PAVED ROADWAY OR SIDEWALK SHALL HAVE A CONCRETE COLLAR AND CAST IRON COVER PER CITY OF SALIDA STANDARDS AND SPECIFICATIONS.
 - ALL WATER LINES SHALL BE DISINFECTED, PRESSURE TESTED, FLUSHED AND TESTED FOR BACTERIOLOGICAL CONTAMINATION PER CSS SECTION 8.00 (I, J, & K). ALL SUPER-CHLORINATED FLUSH WATER SHALL BE DECHLORINATED PRIOR TO DISCHARGE TO PREVENT ENVIRONMENTAL DAMAGE AND FISH KILL IN THE SOUTH ARKANSAS AND ARKANSAS RIVER.

- ALL WATER AND SEWER LINES TO MAINTAIN 10' HORIZONTAL AND 18" VERTICAL SEPARATION. WHERE THIS SEPARATION CAN NOT BE MAINTAINED OR WHEN THE WATER LINE PASSES UNDER THE SANITARY SEWER LINE, THE SEWERLINE SHALL BE ENCASED IN CONCRETE. CONCRETE FOR SEWER PIPE ENCASEMENTS SHALL HAVE A MINIMUM CEMENT CONTENT OF FIVE (5) SACKS PER CUBIC YARD AND A MAXIMUM WATER CONTENT OF FIVE (5) GALLONS PER SACK OF CEMENT AND SHALL HAVE A MINIMUM COMPRESSIVE STRENGTH OF 4000 PSI IN TWENTY-EIGHT (28) DAYS. MINIMUM REINFORCING FOR CONCRETE ENCASEMENTS SHALL BE 4 EACH #4 BARS, CONTINUOUS FOR THE LENGTH OF THE CASING. SEE THE CITY OF SALIDA CONSTRUCTION STANDARDS AND SPECIFICATIONS FOR WATER, SANITARY SEWER AND STREET, LATEST EDITION.
- THE SANITARY SEWER AND WATER LINES SHALL BE INSTALLED WITH SPECIFIED MATERIALS FOR BACKFILL AND BEDDING REQUIREMENTS. REFER TO CSS SECTION 5.00 AND 6.00.
- THE CONTRACTOR SHALL COMPLETE AN AS-BUILT SURVEY AND DRAWINGS TO BE SUBMITTED TO THE CITY OF SALIDA.

Table 1A - Stormwater Drainage Calculations for the City of Salida

Project : Holman Avenue Subdivision Basin 1	Project Area: 74730	SF 74730
Hydrologic Soil Group: A	Project Area: 1.72	Acres 1.72
	Drainage Area 1	Sq. Ft. 74730
	Area 1.7	Acres 1.7
	Area 0.0027	Sq. Mi. 0.0027
Time of Concentration Existing	0.79	Hours 0.79
Time of Concentration Proposed	0.67	Hours 0.67

Number Single Family Lots 8

Present Land Use	Area (Sq. Ft.)	CN	CN*A
Undeveloped Areas	74730	68	5081640
Composite	74730	68.0	5081640

Proposed Land Use	Area (Sq. Ft.)	CN	CN*A
Roads and Parking	19936	98	1953728
Sidewalks	2689	98	263522
Landscaped Areas	18401	39	717639
Residential Lots (2800 per lot)	22400	98	2195200
Alleys	11304	76	859104
Composite	74730	80.1	5989193

Fully developed site including homes	Present Land Use	Proposed Land Use	Difference
25 Year Runoff (in)	0.432	0.96	0.53
25 Year Discharge (cfs)	0.347	1.17	0.82
100 Year Runoff (in)	0.844	1.56	0.72
100 Year Discharge (cfs)	0.811	1.95	1.14

25 year Required Pond Volume = 3313 Cu. Ft.

Pond	Area Top (SF)	Area Bottom (SF)	Elevation Top (ft)	Depth (ft)	Volume (cf)
1	1280	470	7151	3	2625
Bio-swale					735
Sub Total					3360

Civil Engineering • Water Resources • Traffic Engineering

W•E Walker Engineering

905 Camino Sierra Vista, • Santa Fe, NM 87505

505-820-7990
FAX 505-820-3539
E-MAIL: civil@walkerengineering.net

PROJECT: HOLMAN COURT SUBDIVISION

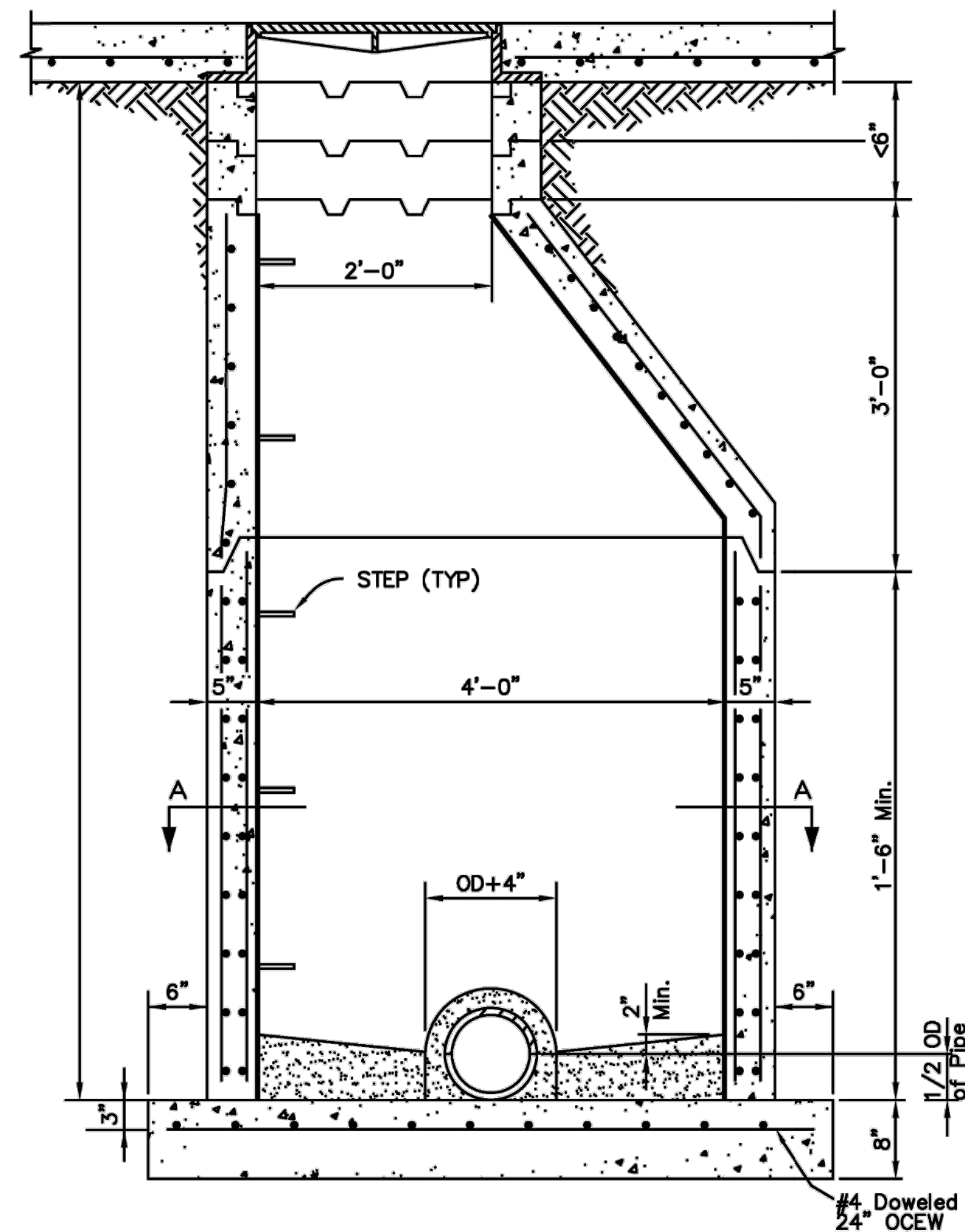
SHEET TITLE: DETAILS

CITY REVIEW	DATE
DEPARTMENT	
WATER	
WATER	
PW ENGINEERING	
TRAFFIC	
FIRE DEPARTMENT	
SOLID WASTE	
LANDSCAPE	
TRAILS/OPEN SPACE	
SUBDIVISION REVIEW	

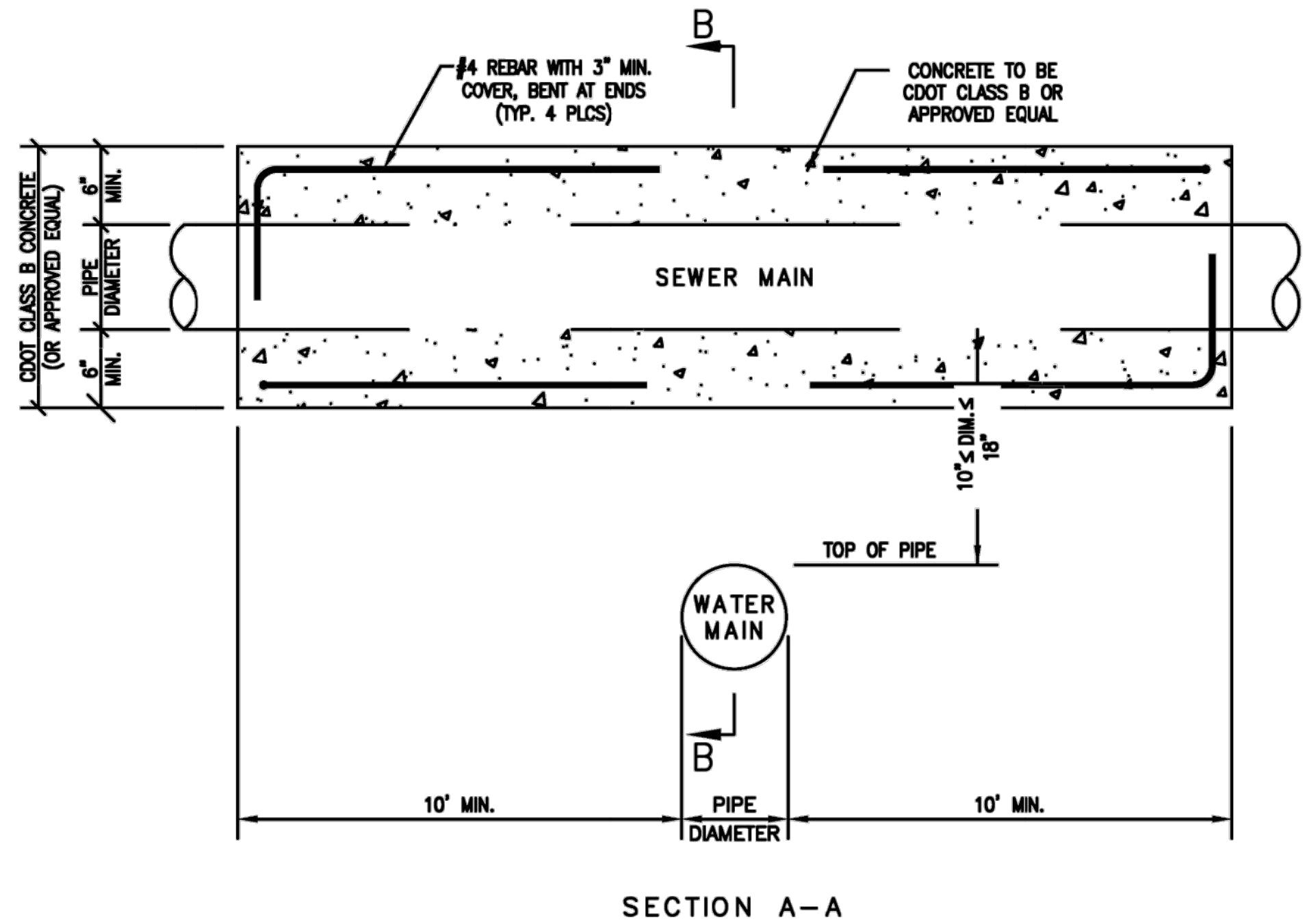
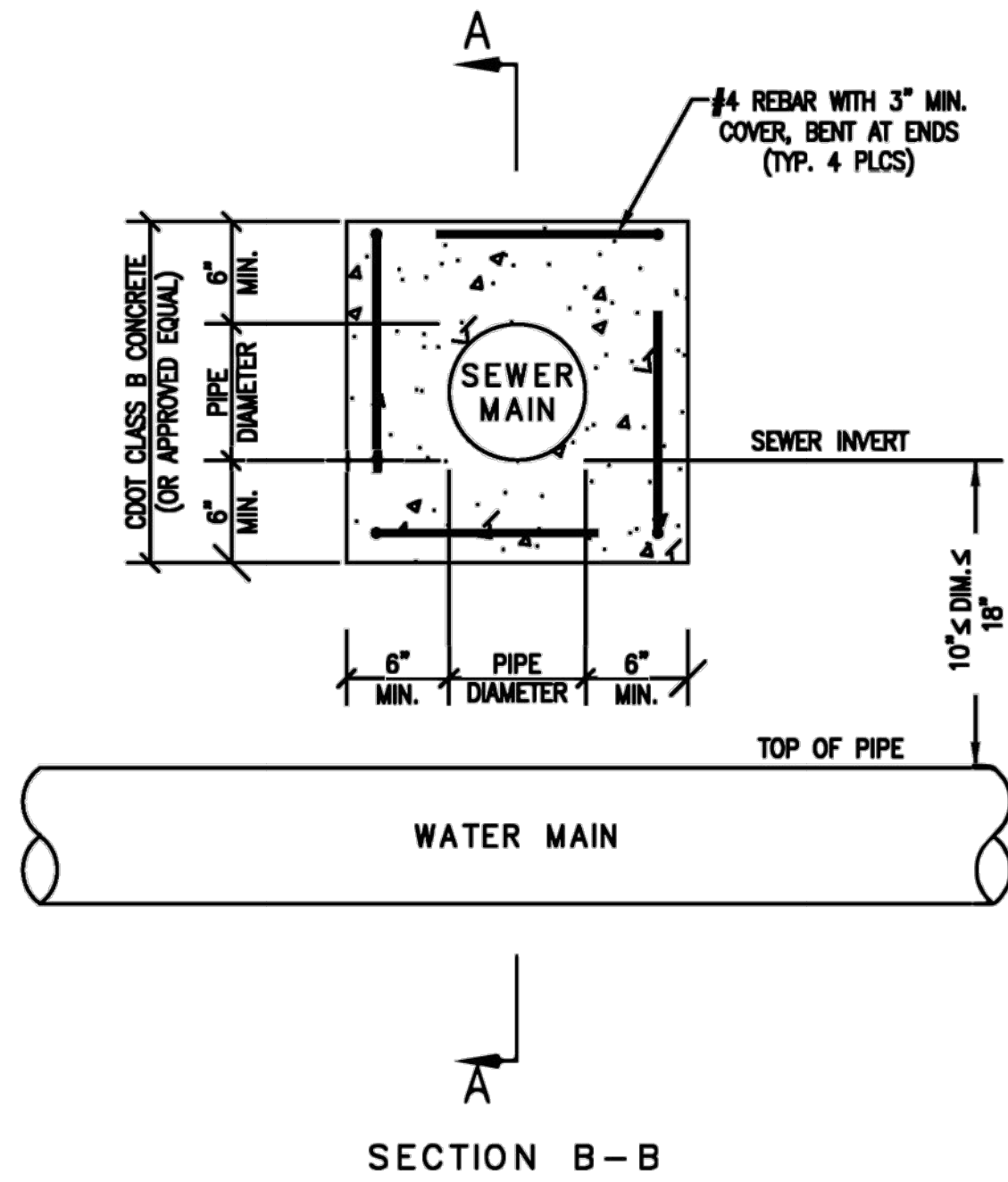
SHEET NO. C9

STREET MANHOLE RING & COVER:
DEETER 1266 OR APPROVED EQUAL
Street MH Ring & Cover 290 Lb. Min.
Street Manhole Ring & Cover to be Machined.

GENERAL NOTE:
Precast Manholes Shall Conform
to ASTM Specification C 478, with
Revisions.
* SANITARY OR STORM SEWER

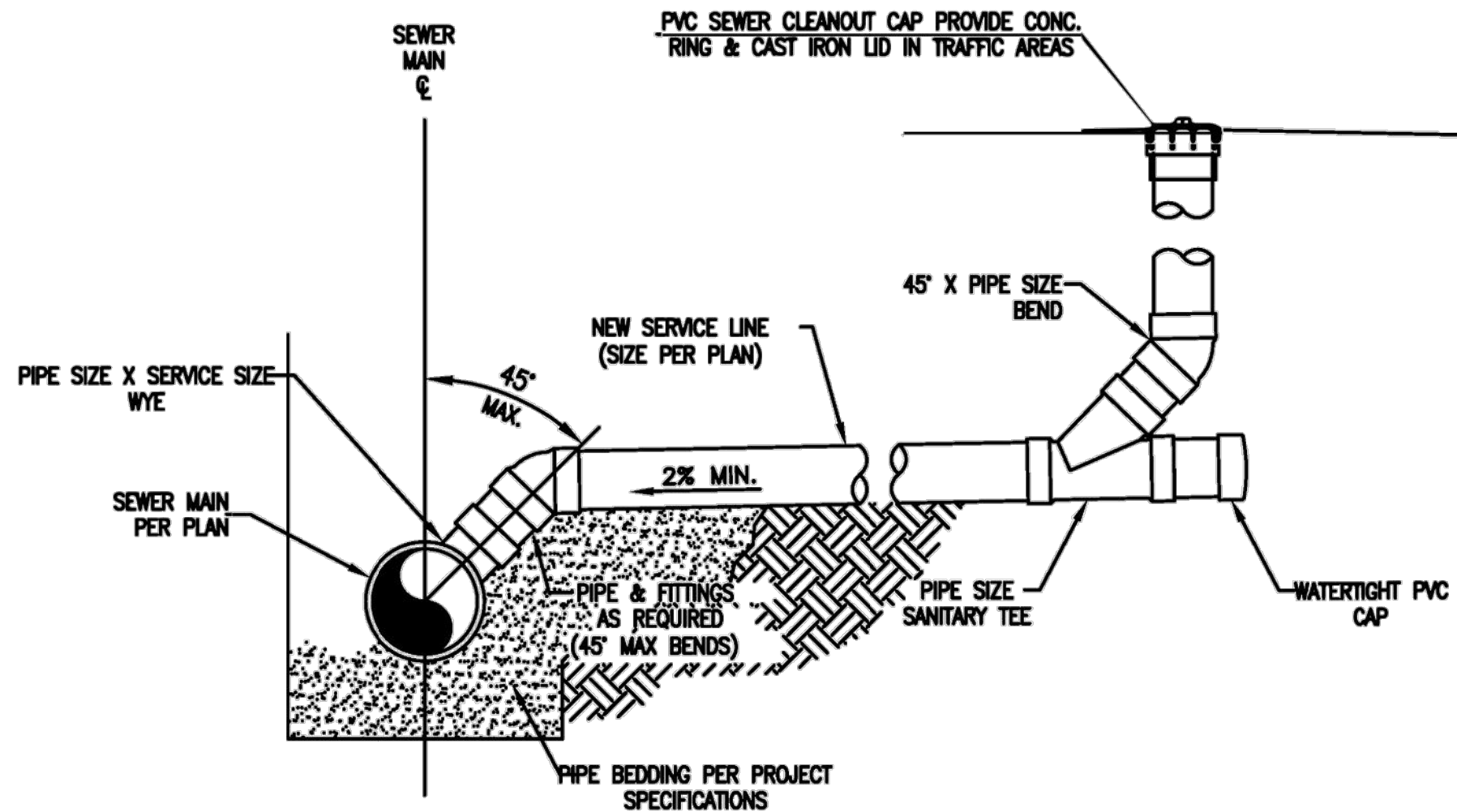
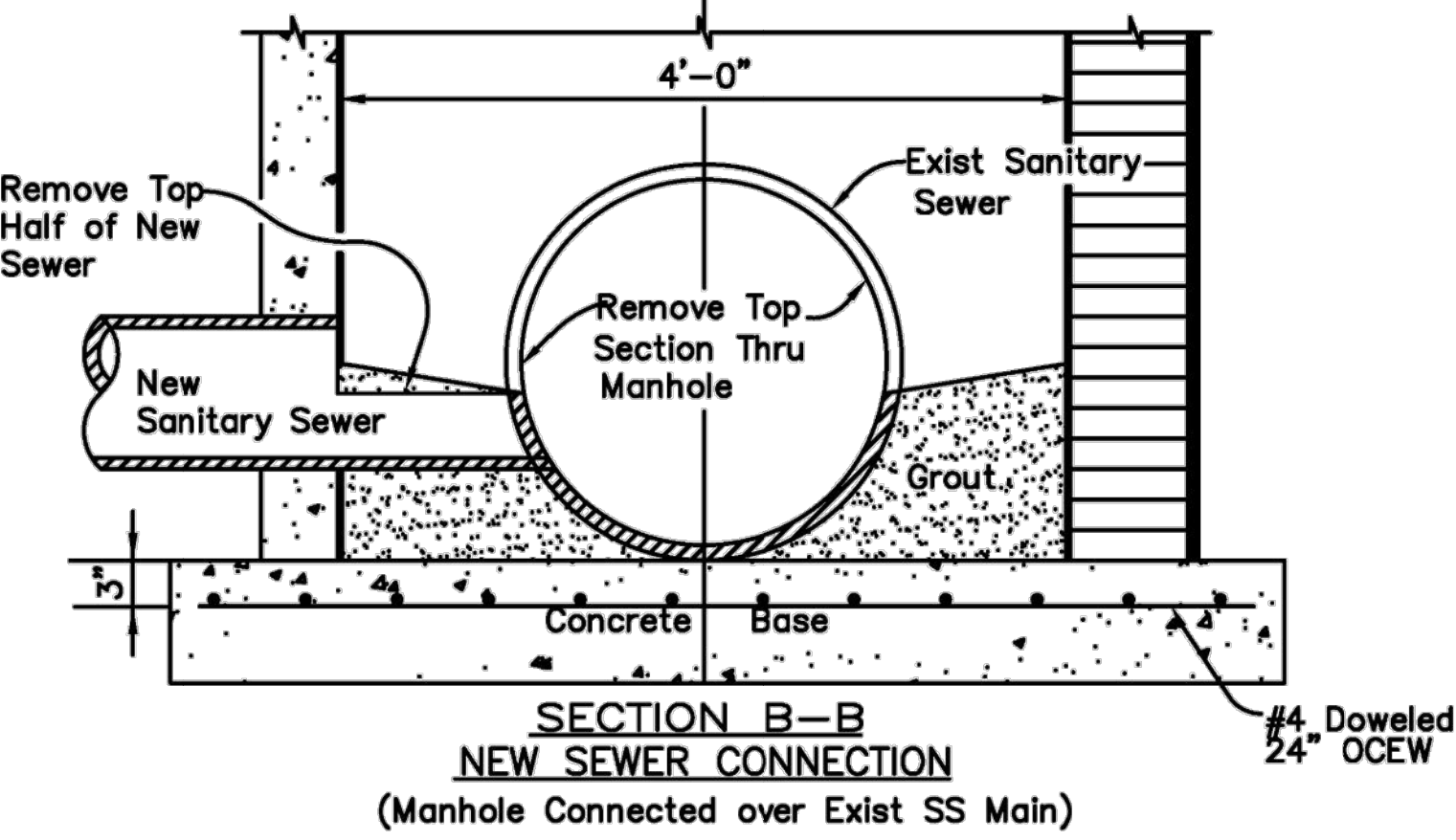
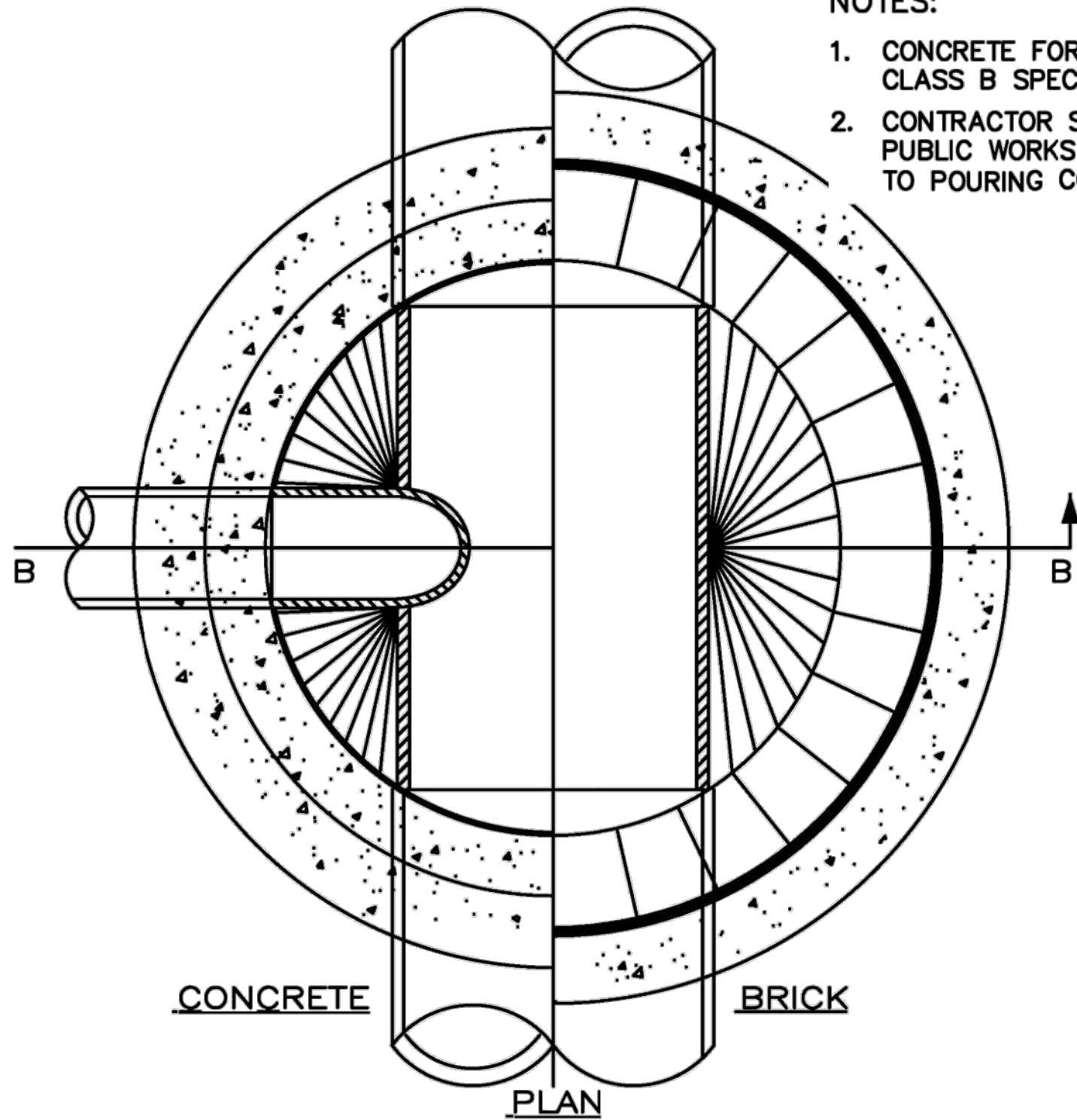


MANHOLE STANDARD DETAIL



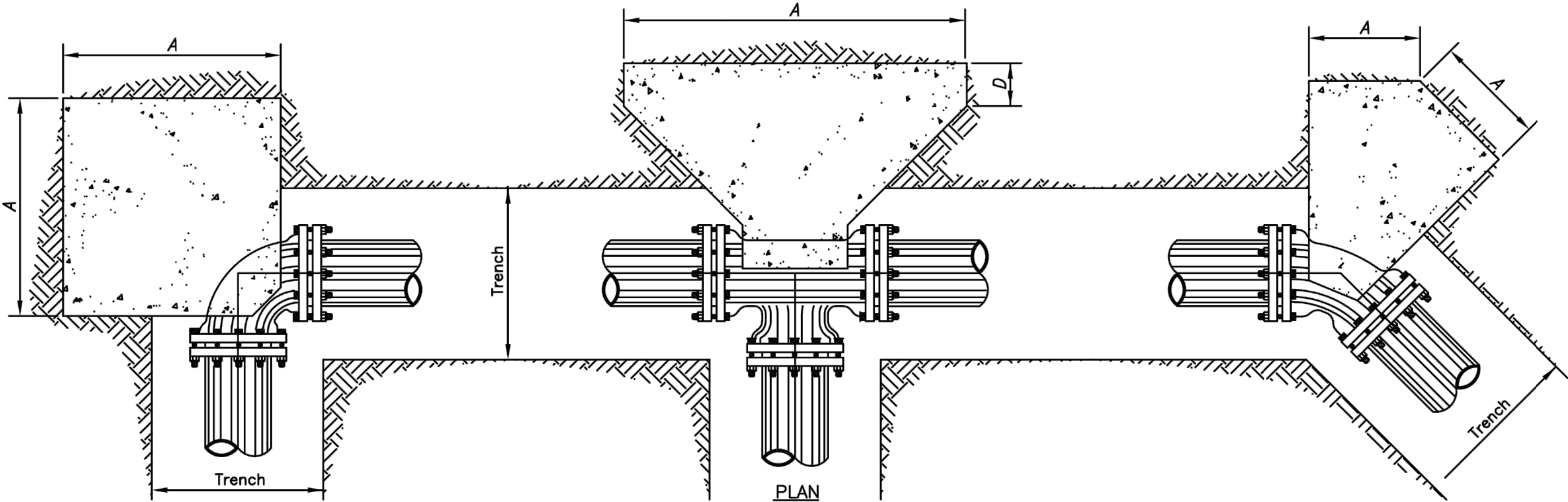
NOTES:
1. CONCRETE FOR ENCASEMENT SHALL MEET CDOT CLASS B SPECIFICATIONS.
2. CONTRACTOR SHALL CONTACT THE CITY OF SALIDA PUBLIC WORKS DEPARTMENT FOR INSPECTION PRIOR TO POURING CONCRETE AND/OR BACKFILLING.

CONCRETE SEWER ENCASEMENT DETAIL

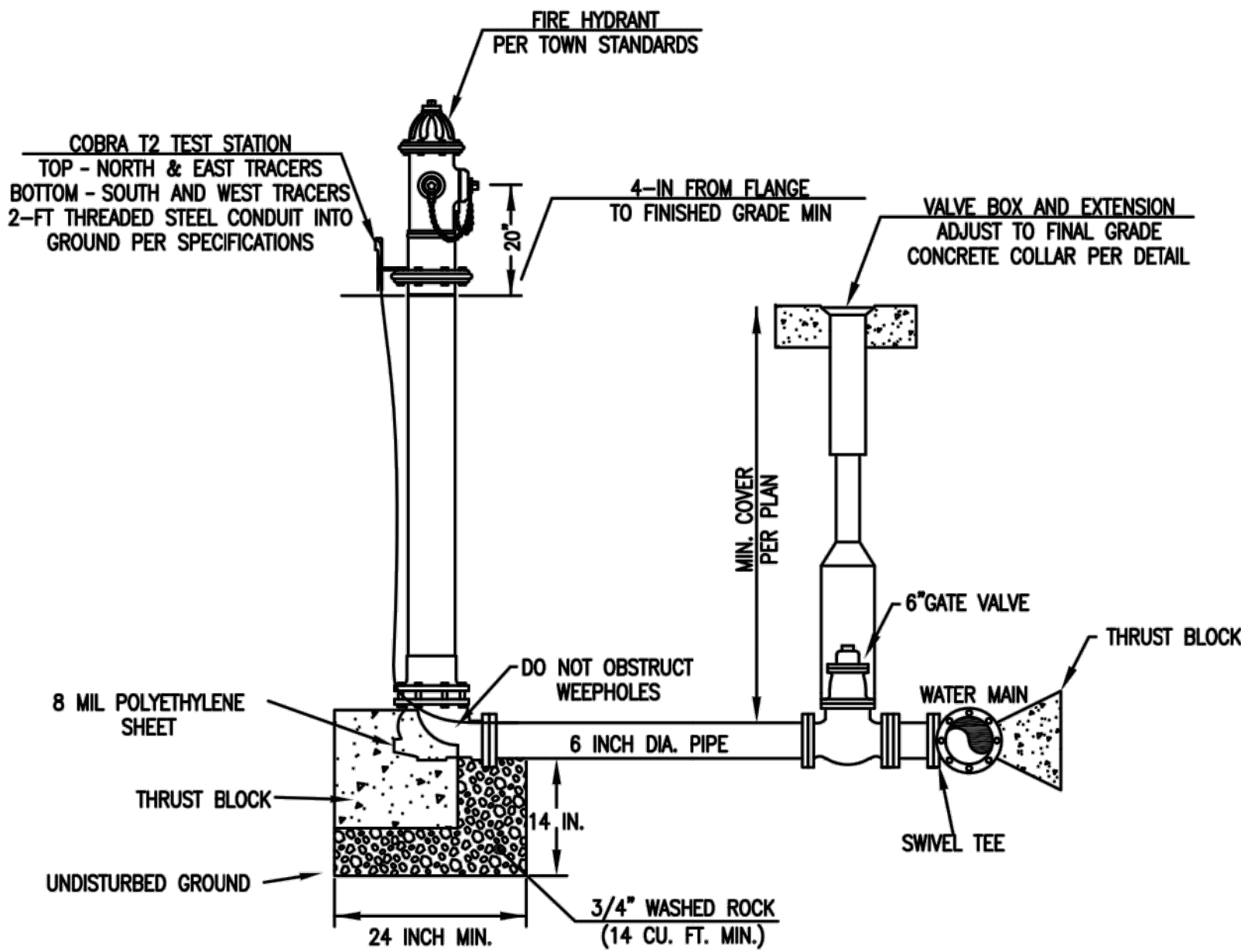


SEWER SERVICE TAP DETAIL

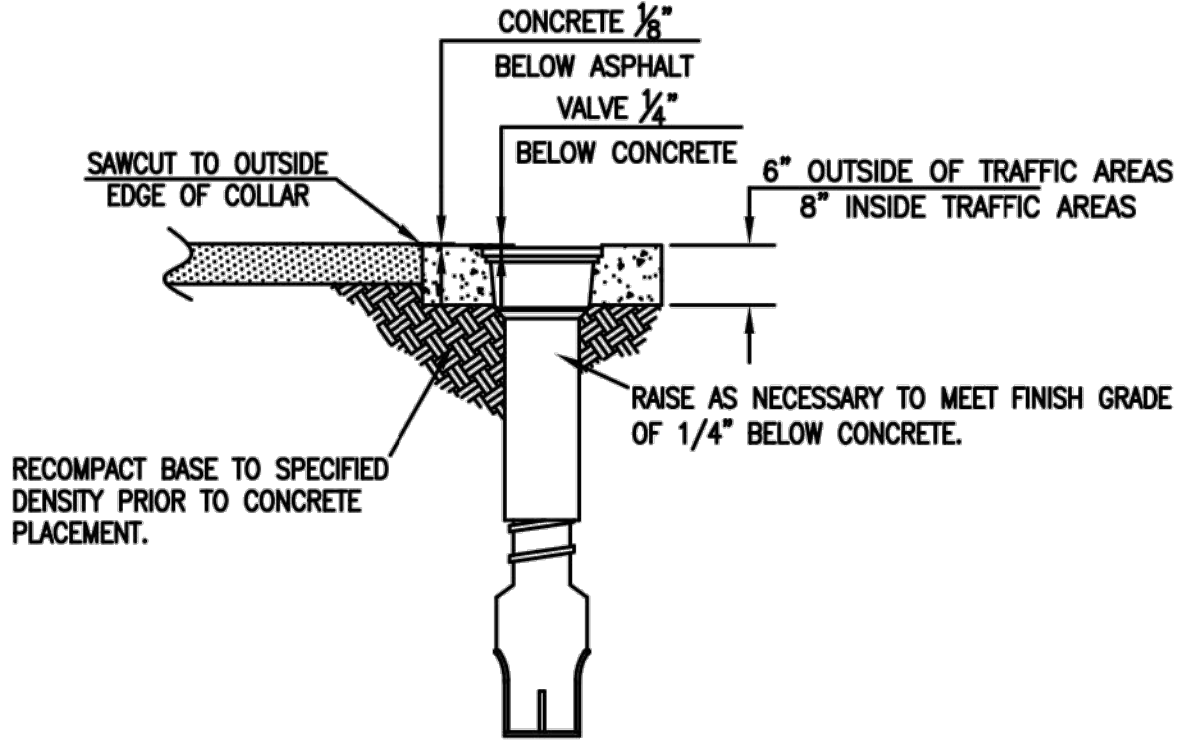
BLOCKING SCHEDULE WATER DISTRIBUTION FITTINGS													
PIPE	TEES & PLUGS				90°			45°			22.5°		
"D"	A	B	C	D	A	B	C	A	B	C	A	B	C
4	16	12	16	12	16	12	16	16	12	16	16	12	16
6	18	12	18	16	18	12	18	18	12	18	18	12	18
8	24	16	24	16	24	16	24	24	16	24	24	16	24
10	30	20	30	16	30	20	30	30	20	30	30	20	30
12	36	24	36	18	36	24	36	36	24	36	36	24	36
16	48	32	48	18	48	32	48	48	32	48	48	32	48
20	60	40	60	18	60	40	60	60	40	60	60	40	60
24	72	48	72	18	72	48	72	72	48	72	72	48	72
30	96	64	72	18	96	64	72	96	64	72	96	64	72



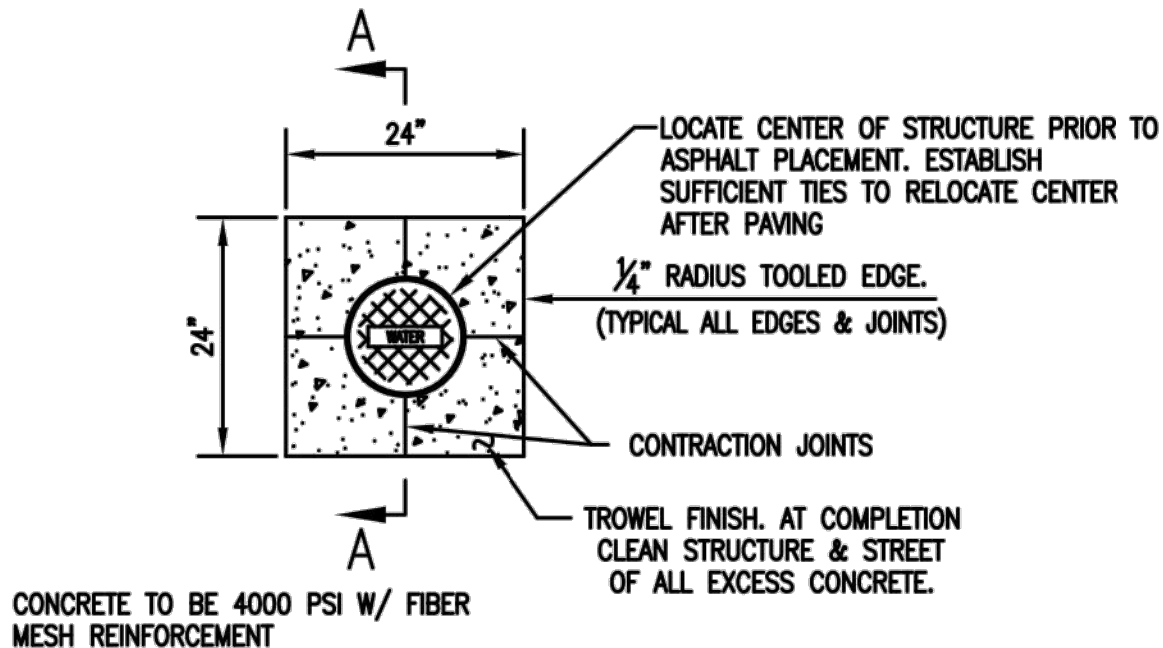
WD 1 THRUST BLOCK
1
DETAIL



WD 2 FIRE HYDRANT ASSEMBLY
2
DETAIL



SECTION A-A

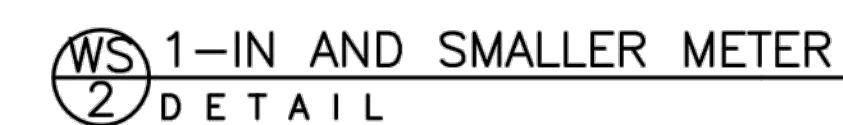
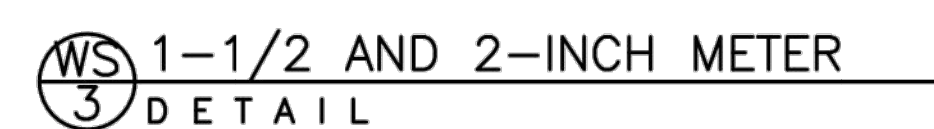
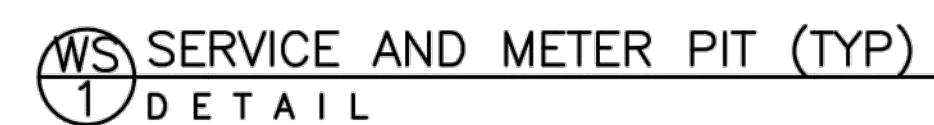


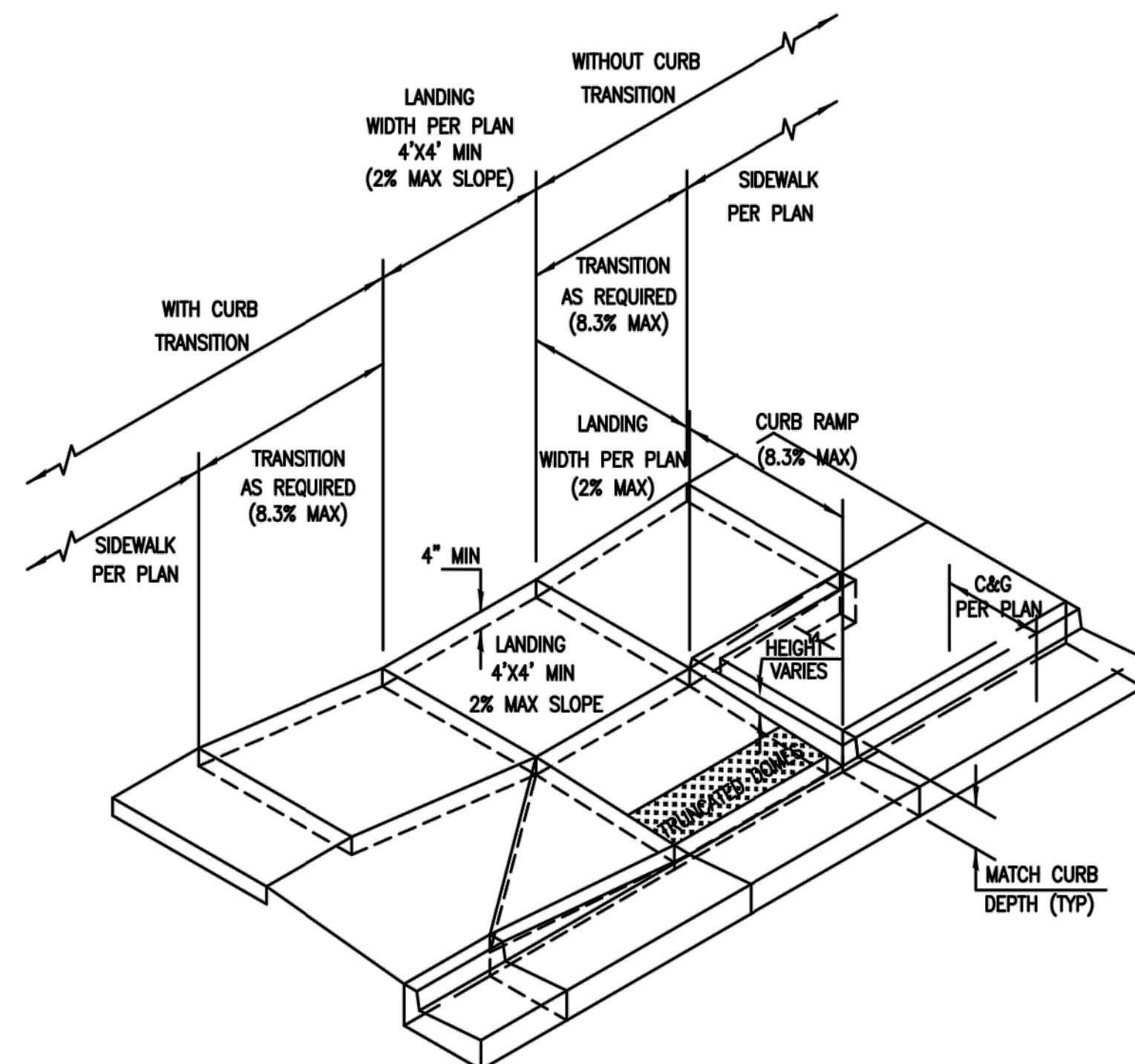
PLAN VIEW

WD 3 WATER VALVE CONCRETE COLLAR
3
DETAIL

GENERAL NOTES

1. Water Lines Shall Have A Minimum Cover Of 4'-6" Or More As Shown On Profiles.
2. All Valves On Mains & Fire Hydrant Leads Shall Be Installed With Valve Box Assemblies.
3. The Size Of Valve Box Assembly To Be Installed Shall Be Determined By The Type And Size Of Valve.
4. Valve Box Caps Shall Have The Word "water" Cast In The Top.

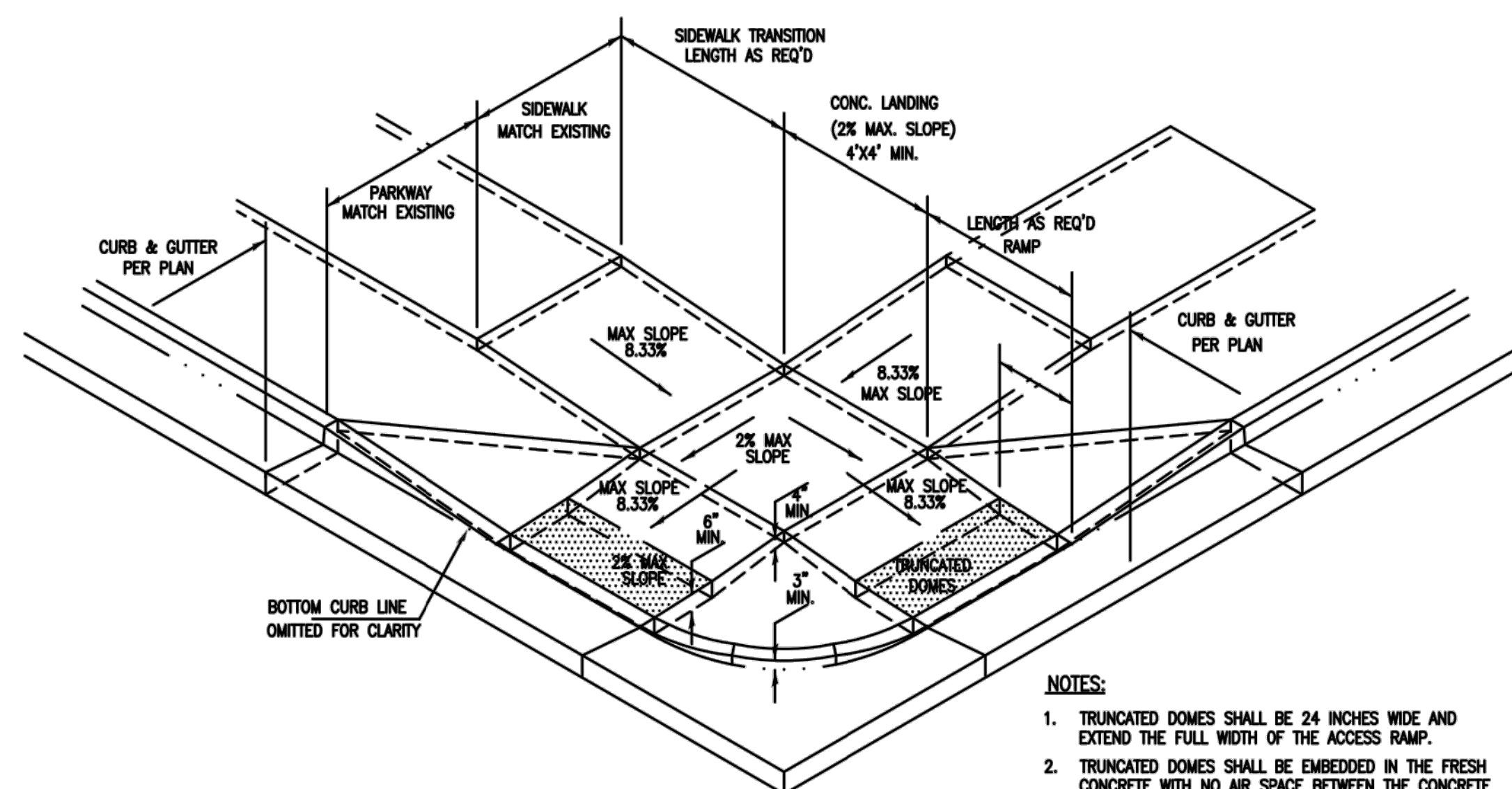




- NOTES:

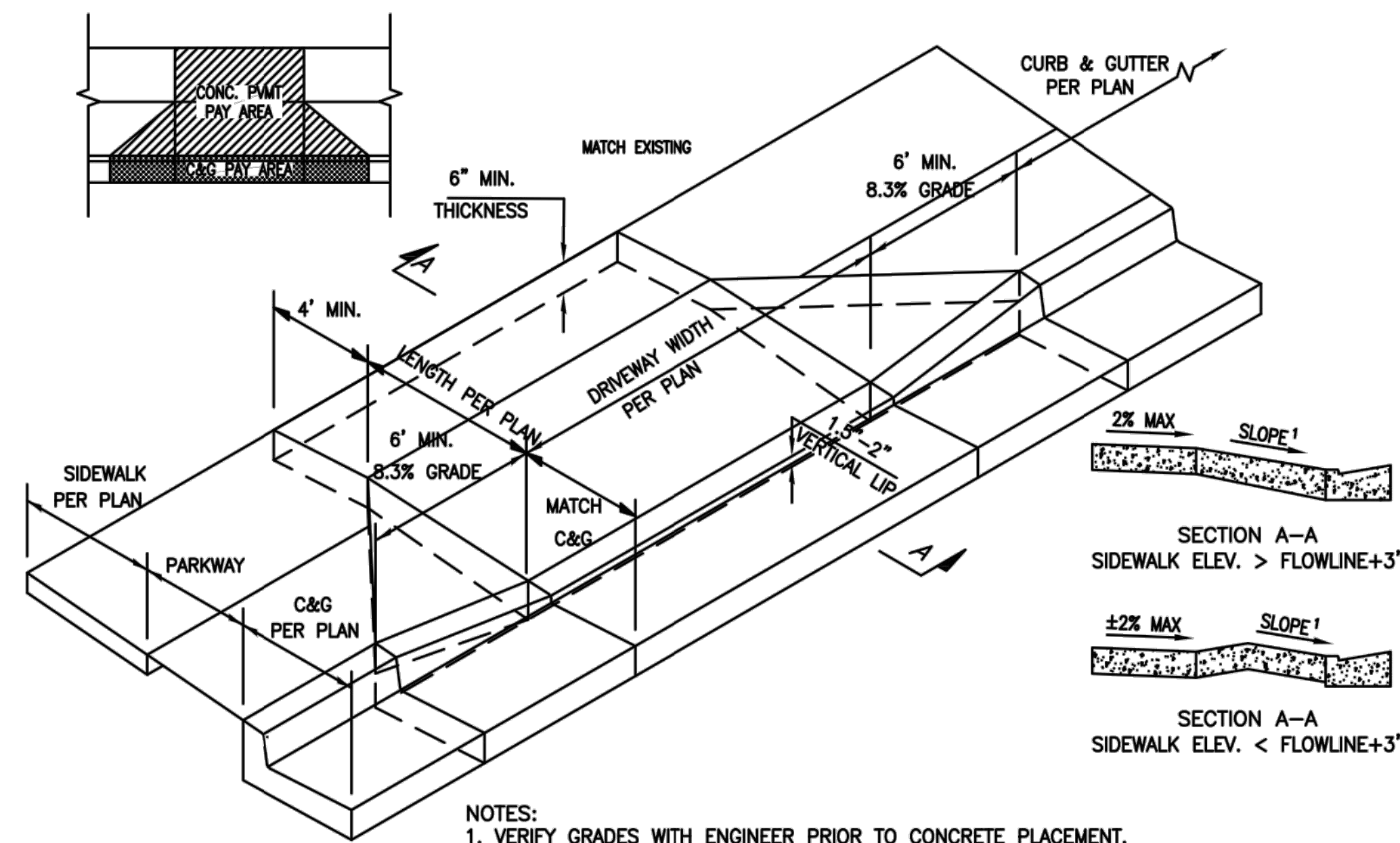
1. TRUNCATED DOMES SHALL BE 24 INCHES WIDE AND EXTEND THE FULL WIDTH OF THE ACCESS RAMP.
2. TRUNCATED DOMES SHALL BE EMBEDDED IN THE FRESH CONCRETE WITH NO AIR SPACE BETWEEN THE CONCRETE AND THE BOTTOM OF THE PLATE. JOINT TO BE TOWELED AT PERIMETER OF DOMES.
3. TRUNCATED DOMES SHALL BE CONSTRUCTED OF UNPAINTED CAST IRON CONFORMING TO ASTM A-48 CLASS 30B.

*TYPE 1 PERMITTED ONLY WITH PRIOR APPROVAL BY PUBLIC WORKS
TYPE 2 SHALL BE STANDARD



- NOTES:

1. TRUNCATED DOMES SHALL BE 24 INCHES WIDE AND EXTEND THE FULL WIDTH OF THE ACCESS RAMP.
2. TRUNCATED DOMES SHALL BE EMBEDDED IN THE FRESH CONCRETE WITH NO AIR SPACE BETWEEN THE CONCRETE AND THE BOTTOM OF THE PLATE.
3. TRUNCATED DOMES SHALL BE CONSTRUCTED OF UNPAINTED CAST IRON CONFORMING TO ASTM A-48 CLASS 30B.



- NOTES:
1. VERIFY GRADES WITH ENGINEER PRIOR TO CONCRETE PLACEMENT.

