

# Multi-Year Street Study

## Roscoe, Illinois

Village of Roscoe  
10631 Main Street  
Roscoe, Illinois 61073

Project No.: 25-793

September 10, 2025

Fehr Graham  
200 Prairie Street  
Rockford, Illinois 61107

---

Village of Roscoe  
10631 Main Street  
Roscoe, Illinois 61073

## Table of Contents

PROJECT OVERVIEW.....	1
Introduction .....	1
Objectives .....	1
Approach.....	1
STREET INSPECTION PROCESS.....	2
Explanation of the Pavement Condition Rating Approach .....	2
Inspection Procedure .....	3
Inspection Results .....	3
MULTI-YEAR MAINTENANCE PLAN .....	4
Introduction .....	4
Pavement Condition Ratings (PCR).....	4
Funding .....	4
Yearly Maintenance Plan .....	5
Year 1 .....	6
Year 2 .....	6
Year 3 .....	6
Year 4 .....	6
Year 5 .....	6
CONCLUSIONS.....	6

### Appendices

- Appendix A – Pavement Deterioration Types
- Appendix B – Pavement Maintenance Methods
- Appendix C – Pavement Maintenance Cost Breakdown
- Appendix D – Raw Data Table
- Appendix E – PCR Form Example

### Exhibits

- Exhibit A – Pavement Condition Ratings
- Exhibit B – Five Year Maintenance Plan
- Exhibit C – Water and Sewer Availability

## PROJECT OVERVIEW

### Introduction

As part of their planning efforts, the Roscoe Village Board has requested that a multi-year street study and maintenance plan be completed for all streets currently maintained by and under the jurisdictional authority of the Village of Roscoe. The following report and supporting documents present the basis of the study and the resulting proposed five-year street maintenance program for said streets. The supporting documents include maps which depict the current condition of the Village Roadway network, set forth priorities for proposed maintenance to said streets, and identify the areas within the Village limits currently not served by public water and sewer utilities and the impact this has on the proposed street maintenance program. These documents are also supported by data summarized in tabular format, including projected costs for various maintenance solutions, pavement condition rating summaries for road segments, street functional classification, and existing utilities. It is anticipated that this study and maintenance recommendations will function as a vital planning component to assist with the Village's upcoming five-year Capital Improvement Program initiative.

### Objectives

In order to most effectively establish a maintenance plan for the Village of Roscoe, street inspections were performed to determine the current conditions, and a supplemental report summarizing the findings of the inspection and providing recommendations for maintenance procedures and priorities were developed. The street inspections were performed to determine the pavement conditions for all the street segments currently maintained by the Village. The various roadway segments were rated based on a variety of pavement defects that are further explained with greater detail in Appendix A. The segments were then prioritized for roadway maintenance based on the ratings given and additional data gathered. Supporting documents, including maps and summary tables, were created to most effectively present the results of the study and prioritization process.

### Approach

As is the case with most studies, there are limitations to the analysis and/or the data, which require assumptions to be made. The potential limitations identified at the beginning of the study include the following:

- » No industry standard for a Pavement Condition Rating system.
- » Non-uniform roadway segments.
- » Potential variation in condition rating and scoring by participants.
- » Roadway improvement funds are limited to the Village's local funds. The Village's Motor Fuel Tax (MFT) Allotment is not used for residential streets.

There are many pavement condition rating systems used throughout the state of Illinois and the country. Locally, the Illinois Department of Transportation has developed their own pavement condition rating system. The basis of all the rating systems is consistently based on the pavement failure types, ride-ability, functional class of the roadway, and average daily trips (ADTs). Upon further research and investigation, it was determined that access to these programs is limited, and their applicability did not meet the needs of this study. The pavement condition rating system utilized on this project has been used by Fehr Graham to complete similar studies throughout the region and was also used for the

Village's 2014 Street Study, thus providing consistency and comparability with the previously completed study. The pavement condition rating system is based on the frequency and severity of the different pavement defects.

The pavement conditions were not completely uniform throughout any roadway segment. The pavement conditions for various roadway segments were typically scored and compiled based on overall condition of the segment with emphasis given to the worst sections of each segment. Based on Fehr Graham's prior experience, it is not appropriate to compile a multi-year street program that addresses segments of one block or less of the Village roadway network. This is based on the inefficiencies realized during construction for multiple mobilizations by the contractor to address small segments throughout the community. Therefore, the roadway segments were appropriately scored considering the pavement conditions so that maintenance to the roadways would occur in a timely fashion.

The subjectivity in the pavement condition ratings is typically a concern facing the data collection portion for this type of project. To establish a more controlled pavement rating approach for the entire project, Fehr Graham's standard of practice is to limit the inspection and rating effort to one trained technician. Although the street ratings reflected herein may be debated, as the severity of the condition is based on the independent views of the inspector. Our approach ensures that all ratings throughout the Village are consistent and relative to each other.

As shown in the map provided as Exhibit C, there are several areas within the Village that are not yet provided with public water and sewer service. In preparing for street maintenance, unserved utility areas always require additional planning, consideration, and funding. Extending water and sanitary sewer service through developed neighborhoods is challenging and often raises considerable costs for street maintenance. Besides the cost for the utility work alone, street maintenance repairs made prior to utility work will likely be significantly impacted. Additional challenges include extending sanitary sewer lines to the unserved area, obtaining concurrence from residents in that area to connect to the proposed extension, and participating in the cost of construction, as well as assessing the extent and possible conflicts with existing private utilities. The maintenance plan does not account for presence of utilities and is solely based on pavement conditions; however, it is recommended that the Village align road maintenance schedules with North Park Public Water District (NPPWD) and Four Rivers Sanitation Authority (FRSA) when they are installing new or replacing utilities to reduce costs and prevent replacement of new pavement. The plan described below does not take these utility improvements into account, as that information is not available at this time.

All roads within the Village's jurisdiction were examined and given a PCR; however, only roads classified as residential are discussed and included in the maintenance plan, as non-residential roads use separate funding. The functional classification field in the shapefile received from WinGIS was used to filter out collector minor arterial roads. Non-residential roads in Roscoe include Main Street, Love Road, Willowbrook Road, Chestnut Street, and McDonald Road.

## **STREET INSPECTION PROCESS**

### **Explanation of the Pavement Condition Rating Approach**

As discussed above, the Pavement Condition Rating (PCR) approach from the Village's 2014 Street Study was used. This approach is similar to other street studies previously performed by Fehr Graham. Pavement deteriorations in each segment were graded using a scale of one to three with three



indicating severe pavement deterioration based on the inspector's opinion of severity as well as the frequency and density of the defect in the roadway segment. Definitions for the various types of pavement deteriorations considered are presented in Appendix A. A ride-ability rating was also established at the time of inspection in order to consider the impacts to the motoring public. The riding condition rating ranged from zero to four, with four being the most uncomfortable riding experience. A maximum possible score of 100 reflects a pavement segment in excellent condition.

## Inspection Procedure

The first step in the inspection procedure was to fully understand how the pavement deterioration types, and PCR worked in conjunction. The deterioration types were examined and previously completed PCR forms were studied. The inspector then drove a variety of the streets within the Village to get an idea of the vast differences in pavement deterioration that currently exists within the sample set.

Street segments were then individually inspected and rated. The streets were rated in continuity so that the opinion of the inspector remained as controlled as possible. The results of said inspection were documented in the field on rating forms. An example of one such form is provided in Appendix E. Upon completion, quality control of the field investigation was performed by an independent inspector to verify that the data obtained was reasonable and consistent. After reviewing the results of the two inspections, it was determined that the results were reasonably accurate. The quality control inspector did not have an opinion that resulted in a PCR that significantly varied from the original inspection. This final check concluded the inspection procedure.

## Inspection Results

Appendix D shows the PCR and other data for each inspected roadway segment. A map displaying the distribution of the PCRs throughout the community is provided as Exhibit A. The map shows that approximately 12.3% miles have a PCR of 64 or less and, thereby, are identified as primary candidates needing immediate attention. Streets with the lowest PCRs typically require a major resurfacing operation or reconstruction.

The table below indicates the condition classification and maintenance activity required based on PCR. Severely deteriorated roadways require more extensive maintenance activities. The maintenance activities are described in Appendix B.

Condition Classification	Score Range	Maintenance Type
Poor	< 65	Full Reconstruction
Fair	65 – 79	Mill & Overlay
Good	80 – 89	Microsurfacing
Great	90 - 100	Crack Sealing

## MULTI-YEAR MAINTENANCE PLAN

### Introduction

Over 60 lane miles within the Village of Roscoe were inspected for the purpose of developing a multi-year maintenance plan. The overall goal of the multi-year maintenance plan was to rate the existing streets by condition and prioritize the needed repairs based on the determined conditions so that the Village can most effectively allocate available funds to maintain their roadway network. Based on our findings, similar to most communities, the Village of Roscoe has a number of streets that require immediate maintenance (PCR scoring below 65) and others that are in fair to great condition (PCR scoring 65 or greater) and are not candidates for expensive maintenance operations at this time. However, care should be taken to identify possible lower-cost maintenance operations that would be appropriate to extend the useful life of those roadway segments that are in fair condition, thereby extending the timeframe of the more costly operations, such as complete reconstruction, that can be necessitated when the pavement begins to fail. Studies show that operations such as crack sealing are cost effective measures that can extend the life of a pavement segment and mitigate more rapid failure. This approach can result in an increase in overall pavement performance and save maintenance dollars in the long term. Exhibit B shows the priority streets maintained each year of the plan.

### Pavement Condition Ratings (PCR)

The streets with a PCR equal to or less than 64 were identified as needing immediate maintenance, with even more emphasis given to those with the lowest PCRs. The five year plan emphasizes maintenance for streets in dire need of resurfacing or reconstruction to address a low PCR while also giving consideration to the inexpensive maintenance operations to segments that are in fair condition with the intent to extend the useful life. Traffic volumes and presence of utilities were not considered in the maintenance plan.

### Funding

It is estimated the Village will have an annual budget of \$500,000 for residential roadways based on historical funding levels. Non-residential roads are separately funded and therefore excluded from the Five-Year Maintenance Plan. The table below shows the impact increasing the annual funding to either \$1,000,000, or \$1,500,000.

Annual Budget	Length of Road Rehabilitated (mi)	Overall PCR for Residential Streets at End of 5 Years
\$ 500,000	7.88	83.3
\$ 1,000,000	15.72	87.8
\$ 1,500,000	23.69	91.8

*Note: The 2025 PCR is 84.0. PCRs are projected to decrease by 1.2 points every year.*

As shown above, the historical \$500,000 annual budget does not raise the overall PCR but can reduce the annual overall PCR decrease by one tenth of the original value, keeping the Village's PCR almost static, but still decreasing. Additional funding would be required to improve the average roadway condition.

Because the maintenance plan prioritizes roads with the lowest PCRs, the plans based on the budgets in the above table only include reconstruction and mill and overlay. Microsurfacing and crack sealing cost only a fraction of the other maintenance activities; however, these methods are only effective for roadways with a PCR of 80 or greater. A proactive approach to road maintenance with significant additional funding that keeps PCRs at 80 or greater would keep future costs down.

### **Yearly Maintenance Plan**

Based on the above, prioritization was limited to a five year window. The Five-Year Plan provides the Village an overall idea of which street segments should be maintained based on pavement condition and establishes a symmetric timeline with the Village's upcoming five-year Capital Improvement Program. As such, the roadway maintenance plan should be used in conjunction with the capital improvement program planning and help guide the Village with infrastructure funding decisions. The plan is not to be used definitively as it can be easily adjusted in future circumstances. Cost estimates were generated in conjunction with different maintenance methods in order to determine the number of streets which could be maintained each year. A description of the different maintenance methods considered for this study is provided in Appendix B. The estimates included within the plan were developed based on the roadway conditions and should not be taken as in-depth estimates. The price for each maintenance activity is based on recent local construction bids. The maintenance cost summary table and cost breakdown table can be found in Appendix C. Using the cost estimates for each roadway maintenance type in conjunction with determined priority streets, Fehr Graham established which road segments could be maintained during each year of the plan. The Five Year Roadway Maintenance Plan map depicting the following paragraph is provided as Exhibit B.

It is not feasible for the Village to reconstruct all roads requiring it in year one as complete road reconstruction costs approximately twice the cost of mill and overlay. If the worst streets were all reconstructed first, roads that only require mill and overlay in 2025 would need to be fully reconstructed by the time the worst roads were fixed, as PCRs decrease by 1.2 points every year (based on experience and observation). Thus, reconstructing roads in order of worst PCR causes the Village's overall PCR to decrease when using a \$500,000 annual budget, albeit at a slower rate than if no road maintenance was performed. Therefore, it was determined that the most judicious and equitable usage of the Village's existing funds would result in the maintenance plan only including one road reconstruction per year with the remainder of the funds being allocated to mill and overlay projects. Seven roads and 1.43 miles require complete reconstruction based on their 2025 PCRs. Of these seven roads, Cinnabar Drive and Geneva Drive have the highest PCRs and therefore would not be replaced as part of the Five Year Roadway Maintenance Plan. If additional infrastructure funding is available, we recommend prioritizing these roads.

As previously stated, the maintenance plan based on the Village's \$500,000 annual budget prevents the overall PCR from greatly decreasing but does not improve it as the condition of the unmaintained roads continue to deteriorate. The proposed maintenance plan described below is designed to maximize the overall PCR for the Village's residential roads with the expected funding available.

### Year 1

The roadway segments shown as blue in Exhibit B represent year one maintenance. The reconstruction of Frankies Lane and the mill and overlay of the remaining Year One street segments are expected to total about \$480,000. At the end of Year Five, the overall PCR for residential roads is projected to be 83.1.

### Year 2

The roadway segments shown as cyan in Exhibit B represent Year Two maintenance. The reconstruction of Race Street and the mill and overlay of the remaining Year Two street segments are expected to total about \$500,000. At the end of Year Two, the overall PCR for residential roads is projected to be 83.2.

### Year 3

The roadway segments shown as green in Exhibit B represent Year Three maintenance. The reconstruction of Wind Flower Lane and the mill and overlay of the remaining Year Three street segments are expected to total about \$505,000. At the end of Year Three, the overall PCR for residential roads is projected to be 83.2.

### Year 4

The roadway segments shown as yellow in Exhibit B represent Year Four maintenance. The reconstruction of Greystone and the mill and overlay of the remaining Year Four street segments are expected to total about \$525,000. At the end of Year Four, the overall PCR for residential roads is projected to be 83.2.

### Year 5

The roadway segments shown as red in Exhibit B represent Year Five maintenance. The reconstruction of Oxbow Dr and the mill and overlay of the remaining Year Five street segments are expected to total about \$505,000. At the end of Year Five, the overall PCR for residential roads is projected to be 83.3.

## **CONCLUSIONS**

The Five Year Roadway Maintenance Plan that was presented as part of this report was determined to be the most beneficial for the Village of Roscoe to address the maintenance needs of the roadway network within the available budget. The plan includes maintenance to residential roadways only. The Village of Roscoe will need substantial additional funds to improve the condition of their roadways as an annual budget of \$500,000 cannot improve the overall PCR as it only provides maintenance for a select few priority streets. Tangible improvement to the Village's overall road condition is only feasible with additional funding.

## **Appendices**

## **Appendix A**

### **Pavement Deterioration Types**

## Appendix A

### Pavement Deterioration Types

The following sections each contain a description and a photograph of the different pavement deterioration criterion used to score the pavement condition rating of the streets in Roscoe. Each section provides a description of the deterioration and the causes for its appearance.

#### **Raveling/Loss of Cover Aggregate**

A smooth asphalt surface becomes rough if the surface materials, such as asphalt binder and fine aggregate, are removed over time. This phenomenon, referred to as raveling, typically results from poor mix design, poor production practices, or poor construction practices. A pavement surface which has experienced raveling will show varying degrees of coarse aggregate at the surface. The severity of raveling is dependent on the amount of binder and fine aggregate lost.



#### **Flushing/Streaking**

Flushing of bituminous pavement occurs when an excess amount of asphalt binder has reached the surface. The binder may reach the surface and become malleable and sticky because of an excess amount of asphalt binder used in the original mix design, rising temperatures, a loss of surface aggregate for chip and seal roadways, or insufficient air voids in the asphalt binder mix. Pavement which has experienced flushing is quite dangerous as the friction loss on the surface results in a surface that is more prone to hydroplaning.





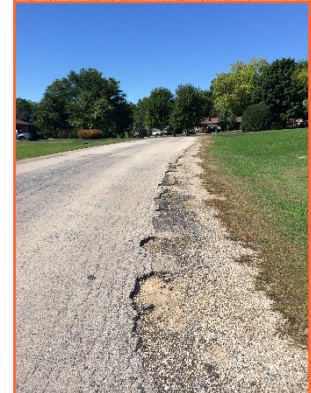
### Potholes

Potholes are one of the most easily distinguishable forms of pavement failure. Potholes typically occur in areas susceptible to freeze thaw cycles as the cycle typically pushes out roadway materials leaving a hole in place. Potholes are a highly problematic pavement distress because of the significant damage they can cause to vehicles and the damage they will cause to the structure of the roadway.



### Pavement Edge Break

The edge of a pavement may begin to break away from the contiguous plane because the aggregate base course along the edge of the pavement is unable to drain the water away from shoulders. This is a common occurrence for streets and roads with ditches or roadway swales. Frost action is typically a primary cause for pavement edge breaking as well. Moisture creates an unstable aggregate base which in turn leads to failure of the surface material.



### Manholes & Catch Basins

Manholes are covered openings that allow for persons to enter a cavity. A catch basin is a drainage structure that is designed to remove excess storm water from a roadway. These two structures create a surface defect when constructed in a roadway as the pavement surface will be cut and joints are created. The pavement joints around the structure are more susceptible to cracking and breaking.





### **Rippling & Shoving**

Rippling and shoving are permanent pavement distresses that look similar to waves along the surface of the roadway. These distresses typically occur due to insufficient stability in the asphalt mix design as compared to the traffic loading. An asphalt mix designed for higher traffic counts will prevent a pavement from rippling or shoving.



### **Wheel Track Rutting**

Wheel track rutting is a very common hot-mix asphalt pavement deterioration type mostly due to excessive loading. This deterioration type occurs when either the hot-mix pavement surface course fails or when the aggregate base fails. When the pavement surface course fails due to mix/design issues, the pavement surface shows wheel depressions. In contrast, the pavement and aggregate base will “sink” into the subbase if the subbase fails. Wheel track rutting can easily be seen after a significant rainfall event as water will hold within the depression.



### **Distortion**

This is any deviation of the pavement surface from its original shape. Generally, these distortions result from settlement, slope failure, volume changes due to moisture and frost heave of the base, and residual effects of frost heave accumulating after each winter. The resulting deformations may take the form of a bump, dip, or rippling/shoving.



### Utility Trenches

Pavement will commonly be removed and replaced when underground utility lines need to be run beneath an established roadway. These pavement patches are prone to cracking, settlement, or other distortions that may require maintenance.

### Longitudinal Cracks

Longitudinal pavement cracks are found running parallel to the centerline of the roadway. This pavement distress is usually caused by the location of a pavement joint. Pavement joints that are constructed in the wheel path of vehicles are prone to premature failure because of the constant loads placed on the joint. The pavement will eventually become severely cracked if no maintenance is performed.

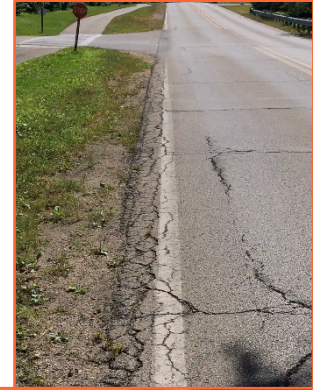
### Transverse Cracks

Transverse pavement cracks are found running perpendicular to the centerline of the roadway. This pavement distress is usually formed as a result of declining temperatures. The bituminous surface course may contract too much when temperatures fall. These cracks need to be maintained properly so that moisture does not seep into the base structure.



### **Pavement Edge Cracking**

Pavement edge cracking is a pavement distortion caused by a higher moisture content under the bituminous pavement at the location of the cracking and under the curb and gutter. Pavement edge cracks originating from the surface indicate pavement upheaval due to the freezing and thawing of the base beneath the roadway.



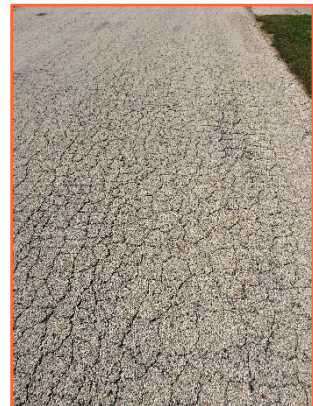
### **Map Cracking**

Map cracking is the cracking pattern in which large, rectangular sections of a bituminous pavement have cracked. This cracking pattern occurs because of the shrinkage and expansion of bituminous pavement due to daily temperature cycles. The asphalt binder is unable to expand and contract with temperature cycles because of poor asphalt binder from the mix or old age.



### **Alligator Cracking**

Alligator cracking is a more severe form of cracking for bituminous pavements as the pavement has developed an interconnected system of cracks. This interconnected system resembles the pattern of an alligator skin. The cracking pattern almost always shows the longer cracks in the system being longitudinal. The shorter cracks which connect the longer cracks together and create the interconnected system are typically transverse. Small sections of the pavement may become detached from the overall pavement surface in more extensive alligator cracking. Alligator cracking usually signifies that the underlying base material has failed.



**Broken or Missing/Poor Cross Fill**

Insufficient cross fill was also accounted for along the pavement shoulder and back of curb. The lack of fill along the shoulders of the road can create problems such as pavement edge breaks, the inability of the shoulder to drain water, and high drop-offs for vehicles. Typically, the cross fill was never established during construction or storm water has washed it away.

**Breakup/Potholes/Drainage**

Pavement edge breaks and potholes along the roadway gutter and ditch can arise when the roadway is unable to drain storm water. Over time, the excess moisture along the sides of the road will create a weakened base and lead to other failure types.

## **Appendix B**

### **Pavement Maintenance Method**

## **Appendix B**

### **Pavement Maintenance Methods**

#### **Typical Street Maintenance Procedures**

Typical pavement maintenance procedures are described in the following paragraphs. Each paragraph describes how the maintenance action is performed. An estimated life expectancy is also provided for each procedure. It should be noted that maintenance life span estimates are variables dependent on a number of factors including traffic loading, initial design and construction, environmental factors, drainage, and previous maintenance.

#### **Crack Sealing**

Crack sealing is the process where cracks in the street are filled with a hot asphaltic mixture to prevent water from seeping in. This operation is probably one of the most important maintenance operations for flexible pavements as the pavement ages. Crack filling can easily extend the life of an asphalt pavement five to ten years before an asphalt overlay is required. Crack filling and sealing should be considered when pavement cracks become greater than 1/4" or 3/8". The crack filling and sealing process includes routing of the cracks, blowing the cracks clean, and filling the cracks with a hot pliable asphaltic mixture. Crack filling or sealing has low initial costs and saves money long-term making it a highly preferred maintenance technique. It is recommended that the Village partner with a neighboring municipality to reduce costs by economics of scale.

#### **Microsurfacing**

This pavement maintenance method consists of a mixture of polymer modified asphalt emulsion, crushed dense graded aggregate, mineral filler, additives, and water. Microsurfacing can be applied in multiple applications. This method can be used to fill wheel ruts up to 1-1/2" in depth in one pass and produces high surface friction. Microsurfacing is suitable for use on interstate highways as well as residential streets, and works well on streets that have a hot mix overlay that has dried and cracked. The life expectancy of this material will vary depending on the underlying pavement conditions and traffic use, but will typically last seven to ten years.

#### **Mill & Overlay**

Milling is the process by which a roadway is profiled to remove old, worn out driving surfaces. The milling or profiling machine can remove existing pavement materials up to and beyond 6" in depth, but this operation is typically used to remove 2"-3" of old pavement. The application of leveling binder is important to remove or minimize the irregularities of an existing paved street surface. A new HMA surface course is then applied to the roadway. This maintenance practice is most common on streets in newer subdivisions in which structural strength and a more uniform and smooth surface are desired. Mill and overlay construction can be expected to have a lifespan of seven to ten years depending on different factors.

**Reconstruction**

Reconstruction is the most expensive form of roadway maintenance. Reconstruction typically involves the removal of existing roadway materials and placement of new aggregate subbase and base courses, HMA binder course, and surface course. Curb and gutter and sidewalk improvements may also be included with reconstruction. New HMA roadways have a lifespan of about 15 to 30 years depending on pavement design, traffic loads and amounts, and other criteria.

## **Appendix C**

### **Pavement Maintenance Cost Breakdown**



## Appendix C

### Pavement Maintenance Cost Breakdown

	2018		2022		2025	
<b>CRACK SEALING</b>	\$/SY	\$/LF	\$/SY	\$/LF	\$/SY	\$/LF
Crack Filling/Sealing	-	-	-	-	\$ 0.39	\$ 0.15
<i>Total</i>	-	-	-	-	\$ 0.39	\$ 0.15

<b>SURFACE REJUVINATION</b>	\$/SY	\$/LF	\$/SY	\$/LF	\$/SY	\$/LF
Surface Rejuvenation	-	-	-	-	\$ 6.45	\$ 2.44
<i>Total</i>	-	-	-	-	\$ 6.45	\$ 2.44

<b>MILL &amp; OVERLAY</b>	\$/SY	\$/LF	\$/SY	\$/LF	\$/SY	\$/LF
Bituminous Surface Removal (var depth)	\$ 2.48	\$ 0.94	\$ 4.30	\$ 1.63	\$ 3.50	\$ 1.33
Leveling Binder, 1/2"	\$ 8.40	\$ 3.18	\$ 8.40	\$ 3.18	\$ 3.00	\$ 1.14
HMA Surface Course, 1.5"	\$ 5.39	\$ 2.04	\$ 7.98	\$ 3.02	\$ 11.80	\$ 4.47
Bituminous Materials (Prime Coat)	\$ 0.25	\$ 0.09	\$ 0.22	\$ 0.08	\$ 0.80	\$ 0.30
Area Reflective Crack Control Treatment	\$ 4.00	\$ 1.52	\$ 3.25	\$ 1.23	\$ 3.00	\$ 1.14
<i>Total</i>	\$ 20.53	\$ 7.78	\$ 24.15	\$ 9.15	\$ 22.10	\$ 8.37

<b>RECONSTRUCTION</b>	\$/SY	\$/LF	\$/SY	\$/LF	\$/SY	\$/LF
General Removal	\$ 3.50	\$ 1.33	\$ 2.75	\$ 1.04	\$ 5.00	\$ 1.89
Aggregate Base Course, 12"	\$ 20.00	\$ 7.58	\$ 30.00	\$ 11.37	\$ 17.00	\$ 6.44
HMA Binder Course, 1 1/2"	\$ 5.39	\$ 2.04	\$ 7.98	\$ 3.02	\$ 11.80	\$ 4.47
HMA Surface Course, 1 1/2"	\$ 5.39	\$ 2.04	\$ 7.98	\$ 3.02	\$ 11.80	\$ 4.47
Bituminous Materials (Prime Coat)	\$ 0.25	\$ 0.09	\$ 0.22	\$ 0.08	\$ 0.80	\$ 0.30
<i>Total</i>	\$ 34.54	\$ 13.09	\$ 48.93	\$ 18.54	\$ 46.40	\$ 17.58

## **Appendix D**

### **Raw Data Table**

Pavement Condition Ratings (PCR) Ordered by PCR

Street Name	From	To	Length (Mi)	Width (LF)	Area (SY) - calc	Area (SY)	Pavement Type	Shoulder Type	Urban/Rural	Sewer	Water	Storm Sewer	Sidewalks	Sidewalk Condition	PCR	Inspection Comments	ADT-2012	Jurisdiction	Functional Class	Year of Last Improvement	Notes
Frankies Ln	River St	Cul-de-sac	0.066	22	852	858	HMA	Turf	Rural	No	No	No	No	None	56			Village of Roscoe	Local		
Race St	Broad St	Reed Ln	0.078	18	824	819	HMA	Turf	Rural	Yes	No	No	No	None	58			Village of Roscoe	Local	2019	
Wind Flower Ln	McDonald Rd	Cul-de-sac	0.283	18	2,988	2987	HMA	Turf	Rural	No	No	No	No	None	58	Patching in several areas		Village of Roscoe	Local		
Main St	Elevator Rd	McDonald Rd	1.768	34	35,266	35261	HMA/PCC	Aggregate	Rural	Yes	Yes	No	No	None	60		6362.5	Village of Roscoe	Major Collector		
Greystone	Applegate Dr	Dead End	0.251	24	3,534	3541	HMA	Turf	Rural	No	Yes	No	No	None	62			Village of Roscoe	Local		75%-100% of the shoulder is higher than the road. Dead end has no turn around.
Oxbow Dr	Dead End	Pine Ln	0.136	22	1,755	1761	HMA	Turf	Rural	No	No	No	No	None	62	Patching in several areas		Village of Roscoe	Local		
Cinnabar Dr	Rambouillet Rdg	Cul-de-sac	0.355	22	4,582	4584	HMA	Turf	Rural	No	Yes	No	No	None	64			Village of Roscoe	Local		80%-100% of the shoulder is higher than the road.
Geneva Dr	Bridge St	Coyote Trl	0.265	22	3,420	4352	HMA	Turf	Rural	Partial	Partial	No	No	None	64			Village of Roscoe	Local		
6th St	Chestnut St	Dead End	0.041	18	433	431	HMA	Aggregate	Rural	Yes	No	No	No	None	65			Village of Roscoe	Local		Dead end has no turn around
Sweet Grass Dr	Rural Edge Dr	Rambouillet Rdg	0.210	24	2,957	2962	HMA	Aggregate/turf	Rural	No	No	No	No	None	65			Village of Roscoe	Local		
Love Rd	McCurry Road	Rockton Road	1.110	24	15,629	15630	HMA	Turf	Rural	No	No	No	No	None	66	Patching in several areas	1400	Village of Roscoe	Major Collector		Cracks were filled
Pine Ln	Oxbow Dr	Dead End	0.030	14	246	249	HMA	Turf	Rural	No	No	No	No	None	66			Village of Roscoe	Local		Dead end has no turn around
Starboard Dr	Cul-de-sac	Dead End	0.190	22	2,452	2455	HMA	Aggregate	Rural	No	No	No	No	None	66			Village of Roscoe	Local		Dead end has no turn around. 50% of shoulder is higher than the road.
Flint Ct	Sawmill Dr	Cul-de-sac	0.119	22	1,536	1539	HMA	Turf	Rural	No	Yes	No	No	None	67			Village of Roscoe	Local		Some potholes had been filled.
Fry Dr	2nd St	Donald Dr	0.253	22	3,265	3265	Chip Seal	Turf	Rural	No	No	No	No	None	67			Village of Roscoe	Local		
Stern Dr	N 2nd St	Starboard Dr	0.152	25	2,229	2224	HMA	Aggregate	Rural	No	No	No	No	None	67			Village of Roscoe	Local		
Flatwillow Dr	Main St	Rural Edge Dr	0.191	24	2,689	2689	HMA	Aggregate/turf	Rural	Partial	Partial	No	No	None	68			Village of Roscoe	Local		
Edith Ln	Main St	Dead End	0.274	26	4,179	4183	HMA	Turf	Rural	No	No	No	No	None	69			Village of Roscoe	Local		Dead end has no turn around
Grove St	Main St	Pappy Brown Dr	0.146	22	1,884	1883	HMA	Turf	Rural	Yes	Yes	No	No	None	69	Patching around MHs		Village of Roscoe	Local		
Pine Ln	Main St	Dead End	0.178	28	2,924	2922	HMA	Turf	Rural	Yes	No	No	No	None	69			Village of Roscoe	Local		
Redfield	Sawmill Dr	Cherrywood	0.186	22	2,401	2402	HMA	Aggregate/turf	Rural	No	Yes	No	No	None	69			Village of Roscoe	Local		Potholes were filled, but filling was coming out. Patching was done. 50% of shoulder is higher than road.
Sagewood Dr	Cul-de-sac	Cul-de-sac	0.282	22	3,640	3639	HMA	Aggregate	Rural	No	Yes	No	No	None	69			Village of Roscoe	Local		
Sutter Dr	Applegate Dr	Cherrywood	0.330	22	4,259	4255	HMA	Aggregate/turf	Rural	No	Yes	No	No	None	69			Village of Roscoe	Local		Patching was done. 50% of the shoulder is higher than the road.
Bergamot Way	Linden Blossom Ln	Calenoula St	0.286	22	3,691	3694	HMA	Turf	Rural	Yes	Yes	No	No	None	70			Village of Roscoe	Local		
Merrion Rd	Leana Dr	Lismore Rd	0.208	22	2,685	2688	HMA	Turf	Rural	Yes	Yes	No	No	None	70	Patching in several areas		Village of Roscoe	Local		80%-100% of shoulder is higher than road
Silver Hawk Ct	Cinnabar Dr	Cul-de-sac	0.107	22	1,381	1376	HMA	Turf	Rural	No	No	No	No	None	70			Village of Roscoe	Local		
Gray Eagle Rd	Bitterroot Rd	Cul-de-sac	0.078	22	1,007	1002	HMA	Turf	Rural	No	No	No	No	None	70			Village of Roscoe	Local		
Leana Dr	Roscoe Rd	Biscayne Place	0.538	22	6,944	6940	HMA	Aggregate/Turf	Rural	Yes	Yes	No	No	None	70	Patching around MHs		Village of Roscoe	Local		Potholes were filled
Twin Deer Run	Applegate Dr	Edgefield	0.491	22	6,337	6334	HMA	Turf	Rural	No	Yes	No	No	None	70			Village of Roscoe	Local		Potholes were filled.
3rd St	Fry Dr	Kelmor Dr	0.182	22	2,349	2353	Chip Seal	Turf	Rural	No	No	No	No	None	71			Village of Roscoe	Local		
Ada Dr	3rd St	Donald Dr	0.128	20	1,502	1502	Chip Seal	Turf	Rural	No	No	No	No	None	71			Village of Roscoe	Local		
Mainsail Dr	N 2nd St	Starboard Dr	0.193	25	2,831	2828	HMA	Aggregate	Rural	Partial	No	No	No	None	71			Village of Roscoe	Local		
Pearl St	Grove St	Dead End	0.244	22	3,149	3146	HMA	Turf	Rural	Yes	Yes	No	No	None	71	Patching in several areas		Village of Roscoe	Local		Dead end has no turn around
Petry Close	McDonald Rd	Cul-de-sac	0.055	22	710	712	HMA	Aggregate	Rural	No	No	No	No	None	71			Village of Roscoe	Local		Potholes were filled, but filling is coming out.
Santolina Dr	Meadowsweet Ln	Chicory Ridge Way	0.248	22	3,201	3206	HMA	Turf	Rural	Yes	Yes	No	No	None	71			Village of Roscoe	Local		
Valerian Way	Bergamot Way	Linden Blssom Ln	0.390	22	5,034	5034	HMA	Turf	Rural	Yes	Yes	No	No	None	71			Village of Roscoe	Local		
Donald Dr	Ada Dr	Cul-de-sac	0.137	20	1,607	1604	Chip Seal	Turf	Rural	No	No	No	No	None	72			Village of Roscoe	Local		
Lemon Grass Ln	Angelica Ln	Talentina Trl	0.612	22	7,899	7901	HMA	Aggregate/Turf	Rural	Yes	Yes	No	No	None	72			Village of Roscoe	Local		
Old Towne Ct	Prairie Flower	Cul-de-sac	0.080	22	1,033	1027	HMA	Turf	Rural	No	Yes	No	No	None	72	Patching in several areas		Village of Roscoe	Local		80%-100% of the shoulder is higher than the road.
River St	Main St	Dead End (Bridge)	0.072	22	929	932	HMA	Turf	Rural	Yes	No	No	No	None	72			Village of Roscoe	Local		

Street Name	From	To	Length (Mi)	Width (LF)	Area (SY) - calc	Area (SY)	Pavement Type	Shoulder Type	Urban/Rural	Sewer	Water	Storm Sewer	Sidewalks	Sidewalk Condition	PCR	Inspection Comments	ADT-2012	Jurisdiction	Functional Class	Year of Last Improvement	Notes
River St	Dead End	Dead End (Bridge)	0.103	22	1,329	1327	HMA	Turf	Rural	Yes	Yes	No	No	None	72			Village of Roscoe	Local		
Rosemare Dr	Leana Dr	Lismore Rd	0.173	22	2,233	2239	HMA	Turf	Rural	Yes	Yes	No	No	None	72			Village of Roscoe	Local		
Smoke Tree Cir	Smoke Tree Ln	Cul-de-sac	0.089	24	1,253	1260	HMA	Aggregate/turf	Rural	No	Yes	No	No	None	72			Village of Roscoe	Local		50% of the shoulder is higher than the road.
Clay Ct	Sawmill Dr	Cul-de-sac	0.096	22	1,239	1244	HMA	Turf	Rural	No	Yes	No	No	None	73			Village of Roscoe	Local		Potholes were filled
Coyote Trl	Dead End	Rural Edge Dr	0.119	22	1,536	1541	HMA	Turf	Rural	No	No	No	No	None	73			Village of Roscoe	Local		Dead end has no turn around. Half of road was redone.
Edgefield	Cherrywood	Prairie Flower	0.424	22	5,472	5478	HMA	Turf	Rural	No	Yes	No	No	None	73			Village of Roscoe	Local		Potholes were filled.
Franklin St	Bridge St	River St	0.155	22	2,001	1998	HMA	Turf	Rural	Yes	Yes	No	No	None	73	Patching in several areas		Village of Roscoe	Local		
Geneva Ct	Geneva Dr	Cul-de-sac	0.079	28	1,298	1295	HMA	None	Urban	Yes	Yes	Yes	No	None	73			Village of Roscoe	Local		
Meadowbrook	Cherrywood	Cul-de-sac	0.114	22	1,471	1465	HMA	Turf	Rural	No	Yes	No	No	None	73			Village of Roscoe	Local		
Brandy Bend Rd	Fawn Prairie Dr	Hawks Pointe Trl	0.263	24	3,703	3701	HMA	Aggregate/Turf	Rural	Yes	Yes	No	No	None	74			Village of Roscoe	Local		50% of shoulder is higher than road
Densmore Dr	Prairie Flower	Twin Deer Run	0.157	22	2,026	2023	HMA	Turf	Rural	No	Yes	No	No	None	74			Village of Roscoe	Local		50% of the shoulder is higher than the road.
Foxdale St	Twin Deer Run	Edgefield	0.238	22	3,072	3071	HMA	Turf	Rural	No	Yes	No	No	None	74			Village of Roscoe	Local		80%-100% of the shoulder is higher than the road.
Kelmor Dr	2nd St	Cul-de-sac	0.179	22	2,310	2307	Chip Seal	Turf	Rural	No	No	No	No	None	74			Village of Roscoe	Local		
Linden Blossom Ln	Angelica Ln	Valerian Way	0.587	22	7,576	7579	HMA	Turf	Rural	Yes	Yes	No	No	None	74			Village of Roscoe	Local		25% of the shoulder is higher than the road. Potholes have been filled.
Swanson Ct	Swanson Dr	Cul-de-sac	0.178	23	2,402	2396	HMA	Turf	Rural	Yes	Yes	No	No	None	74			Village of Roscoe	Local		
Thickett Trl	Old River Rd	Woodchuck Trl	0.135	24	1,901	1896	HMA	Turf	Rural	Yes	Yes	No	No	None	74			Village of Roscoe	Local		Patching was done
Double Ditch Cir	McDonald Rd	Cul-de-sac	0.042	22	542	541	HMA	Aggregate	Rural	No	No	No	No	None	75			Village of Roscoe	Local		
Jasmine Dr	Cotton Thistle	Valerian Way	0.570	22	7,357	7356	HMA	Turf	Rural	Yes	Yes	No	No	None	75			Village of Roscoe	Local		
Nestlewood Dr	Cherrywood	Cul-de-sac	0.486	22	6,273	6274	HMA	Turf	Rural	No	Yes	No	No	None	75			Village of Roscoe	Local		
Prairie Flower	Nestlewood Dr	Cherrywood	0.369	22	4,763	4763	HMA	Turf	Rural	No	Yes	No	No	None	75			Village of Roscoe	Local		Potholes were filled. 75% of the shoulder was higher than the road.
Rowena Dr	Frankies Ln	Cul-de-sac	0.181	18	1,911	1915	Chip Seal	Turf	Rural	Partial	No	No	No	None	75			Village of Roscoe	Local		
Rural Edge Dr	Flatwillow Dr	Sweet Grass Dr	0.251	22	3,240	3242	HMA	Turf	Rural	No	No	No	No	None	75			Village of Roscoe	Local		
Crescent Ct	Prairie Flower	Cul-de-sac	0.082	22	1,058	1063	HMA	Turf	Rural	No	Yes	No	No	None	76			Village of Roscoe	Local		50% of the shoulder is higher than the road.
Deerwood Ct	Rambouillet Rdg	Cul-de-sac	0.036	28	591	599	HMA	None	Urban	Yes	Yes	Yes	No	None	76			Village of Roscoe	Local		
Elberon Rd	Dead End	Lismore Rd	0.176	22	2,272	2269	HMA	Turf	Rural	Yes	Yes	No	No	None	76	Patching in several areas		Village of Roscoe	Local		Dead end has no turn around. 80%-100% of shoulder is higher than road.
Montadale Dr	Corriedale Run	Karkul Terrace	0.068	26	1,037	1031	HMA	None	Urban	Yes	Yes	Yes	Yes	None	76			Village of Roscoe	Local		
Prairie View Ct	Prairie Flower	Cul-de-sac	0.060	22	774	770	HMA	Turf	Rural	No	Yes	No	No	None	76			Village of Roscoe	Local		50% of the shoulder is higher than the road.
Purple Sage Dr	Linden Blossom Ln	Applemint Ln	0.380	22	4,905	4913	HMA	Aggregate	Rural	Yes	Yes	No	No	None	76	Patching in several areas		Village of Roscoe	Local		
Rockrose Ct	Rockrose Dr	Cul-de-sac	0.128	26	1,952	1960	HMA	None	Urban	Yes	Yes	Yes	No	None	76			Village of Roscoe	Local		
Tumeric Circle	Chicory Rdige Way	Cul-de-sac	0.038	22	490	495	HMA	Turf	Rural	Yes	Yes	No	No	None	76			Village of Roscoe	Local		
3rd St	Harrison St	Dead End	0.065	16	610	614	HMA	Turf	Rural	Yes	Yes	No	No	None	77			Village of Roscoe	Local		Dead end has no turn around
Ashleigh Ln	Leana Dr	Lismore Rd	0.250	22	3,227	3232	HMA	Turf	Rural	Yes	Yes	No	No	None	77			Village of Roscoe	Local		80%-100% of shoulder is higher than road
Cartwright Ct	Rambouillet Rdg	Cul-de-sac	0.030	28	493	490	HMA	None	Urban	Yes	Yes	Yes	No	None	77			Village of Roscoe	Local		
Common Rose St	Metalmark Ln	Clearwing Ln	0.130	26	1,983	1984	HMA	None	Urban	Yes	Yes	Yes	No	None	77			Village of Roscoe	Local		
Fawn Prairie Dr	Goosedown Dr	Thickett Trail	0.297	24	4,182	4186	HMA	Turf	Rural	Yes	Yes	No	No	None	77			Village of Roscoe	Local		Patching was done
Marblewing Rd	Morning Cloak St	Clearwing Ln	0.305	26	4,652	4648	HMA	None	Urban	Yes	Yes	Yes	No	None	77			Village of Roscoe	Local		
Mosaic Ln	Metalmark Ln	Dead End	0.182	26	2,776	2780	HMA	None	Urban	Yes	Yes	Yes	No	None	77			Village of Roscoe	Local		Dead end has no turn around
Overture Way	Dead End	Lismore Rd	0.317	22	4,091	4086	HMA	Turf	Rural	Yes	Yes	No	No	None	77			Village of Roscoe	Local		Dead end has no turn around
Sage Hen Ter	Sage Hen Trl	Cul-de-sac	0.034	22	439	433	HMA	Turf	Rural	No	No	No	No	None	77			Village of Roscoe	Local		
Sage Hen Trl	Sweet Grass Dr	McDonald Rd	0.204	22	2,633	2638	HMA	Turf	Rural	No	No	No	No	None	77			Village of Roscoe	Local		

Street Name	From	To	Length (Mi)	Width (LF)	Area (SY) - calc	Area (SY)	Pavement Type	Shoulder Type	Urban/Rural	Sewer	Water	Storm Sewer	Sidewalks	Sidewalk Condition	PCR	Inspection Comments	ADT-2012	Jurisdiction	Functional Class	Year of Last Improvement	Notes
Supply Rd	Willowbrook Rd	Quality Dr	0.054	34	1,077	1074	HMA	None	Urban	Yes	Yes	Yes	No	None	77			Village of Roscoe	Local		Potholes were filled
Talentina Trl	Bergamot Way	Lemon Grass Dr	0.153	22	1,975	1969	HMA	Aggregate	Rural	Yes	Yes	No	No	None	77			Village of Roscoe	Local		
Winterfield Ln	Prairie Flower	Twin Deer Run	0.180	22	2,323	2326	HMA	Turf	Rural	No	Yes	No	No	None	77			Village of Roscoe	Local		Potholes were filled.
3rd St	Chestnut St	North St	0.079	18	834	834	Chip Seal	Turf	Rural	No	No	No	No	None	78			Village of Roscoe	Local		
Ballymore Rd	Leana Dr	Lismore Rd	0.272	22	3,511	3507	HMA	Turf	Rural	Yes	Yes	No	No	None	78			Village of Roscoe	Local		80%-100% of shoulder is higher than road
Hawks Pointe Trl	Roscoe Rd	Acadia St	0.532	22	6,866	6868	HMA	Turf	Rural	Yes	Yes	No	No	None	78			Village of Roscoe	Local		
Morning Cloak St	Monarch Rd	Dead End	0.227	26	3,463	3460	HMA	None	Urban	Yes	Yes	Yes	No	None	78			Village of Roscoe	Local		Dead end has no turn around
Verbena St	Meadowsweet Ln	Chicory Ridge Way	0.255	22	3,291	3285	HMA	Aggregate/turf	Rural	Yes	Yes	No	No	None	78			Village of Roscoe	Local		
White Dove Rd	Smoke Tree Ln	Applegate Dr	0.204	24	2,872	2869	HMA	Turf	Rural	No	Yes	No	No	None	78	Patching in several areas		Village of Roscoe	Local		
Charlemont Rd	Leana Dr	Lismore Rd	0.103	22	1,329	1330	HMA	Turf	Rural	Yes	Yes	No	No	None	79			Village of Roscoe	Local		80%-100% of shoulder is higher than road
Edgemere Terrace	Hononegah Rd	Roscoe Township Border	0.364	22	4,698	4701	HMA	Turf	Combination	Yes	Yes	No	No	None	79			Village of Roscoe	Local		Potholes were filled
Equine Dr	Saddle Club Dr	Cul-de-sac	0.140	22	1,807	1804	Chip Seal	Turf	Rural	No	No	No	No	None	79			Roscoe Township	Local		
High St	Bridge St	Dead End	0.253	22	3,265	3265	HMA	Turf	Rural	No	No	No	No	None	79	Patching in several areas		Village of Roscoe	Local		
Karakul Terrace	Tall Pines Pkwy	Montadale Dr	0.072	28	1,183	1184	HMA	None	Urban	Yes	Yes	Yes	Yes	None	79			Village of Roscoe	Local		
Merilot Dr	Meadowsweet Ln	Chicory Ridge Way	0.167	22	2,155	2151	HMA	Aggregate/turf	Rural	Yes	Yes	No	No	None	79			Village of Roscoe	Local		
Presley Place	Pearl St	Franklin St	0.190	22	2,452	2458	HMA	Turf	Rural	Yes	Yes	No	No	None	79	Patching in several areas		Village of Roscoe	Local		
Reimer Dr	Main St	Cul-de-sac	0.264	26	4,027	4032	HMA	Turf	Rural	Yes	Yes	No	No	None	79			Village of Roscoe	Local		
Smoke Tree Ln	Upper Ridge Way	White Dove Rd	0.207	24	2,915	2914	HMA	Aggregate/turf	Rural	No	Yes	No	No	None	79			Village of Roscoe	Local		80%-100% of the shoulder is higher than the road.
Williams Dr	Main St	Oxbow Dr	0.304	22	3,924	3928	HMA	Turf	Rural	No	Yes	No	No	None	79			Village of Roscoe	Local		
Woodchuck Trl	Brandy Bend Rd	Dead End	0.075	22	968	972	HMA	Turf	Rural	Yes	Yes	No	No	None	79			Village of Roscoe	Local		Dead end has no turn around. 50% of shoulder is higher than road.
4th St	Chestnut St	Fry Dr	0.173	22	2,233	2231	Chip Seal	Turf	Rural	No	No	No	No	None	80			Village of Roscoe	Local		50% of shoulder is higher than road.
Calenoula St	Lemon Grass Ln	Bergamot Way	0.204	22	2,633	2637	HMA	Turf	Rural	Yes	Yes	No	No	None	80	Patching in several areas		Village of Roscoe	Local		
Dorothy Ln	Joncey Dr	Floyd Dr	0.265	28	4,353	3415	HMA	None	Urban	Yes	Yes	Yes	Yes	None	80			Village of Roscoe	Local		
Goosedown Dr	Fawn Prairie Dr	Hawks Pointe Trl	0.226	24	3,182	3185	HMA	Turf	Rural	Yes	Yes	No	No	None	80			Village of Roscoe	Local		
Leicester Way	Swanson Rd	Corriedale Run	0.322	26	4,912	4918	HMA	None	Urban	Yes	Yes	Yes	Yes	None	80			Village of Roscoe	Local		
Monarch Rd	Morning Cloak St	Mosaic Ln	0.424	26	6,467	6475	HMA	None	Urban	Yes	Yes	Yes	No	None	80			Village of Roscoe	Local		
Performance Dr	Willowbrook Rd (East	Dead End	0.199	36	4,203	4193	HMA	None	Urban	Yes	Yes	Yes	No	None	80			Village of Roscoe	Local		
Quill Dr	Brandy Bend Rd	Hawks Pointe Trl	0.207	24	2,915	2919	HMA	Turf	Rural	Yes	Yes	No	No	None	80			Village of Roscoe	Local		
Saddle Club Dr	Love Rd	Equine Dr	0.139	20	1,631	1636	Chip Seal	Turf	Rural	No	No	No	No	None	80			Village of Roscoe	Local		Bad pothole in cul-de-sac. 80%-100% of shoulder is higher than road.
Applemint Ln	Purple Sage Dr	Dead End	0.028	22	361	363	HMA	Turf	Rural	Yes	Yes	No	No	None	81	Patching in several areas		Village of Roscoe	Local		Dead end has no turn around
Borage Trl	Dead End	Purple Sage Dr	0.377	22	4,866	4867	HMA	Aggregate/Turf	Rural	Yes	Yes	No	No	None	81	Patching in several areas		Village of Roscoe	Local		Dead end has no turn around
Broad St	Main St	Cross St	0.117	20	1,373	1375	HMA	Turf	Rural	No	No	No	No	None	81			Village of Roscoe	Local		
Chicory Ridge Way	Angelica Ln	Purple Sage Dr	0.435	22	5,614	5611	HMA	Aggregate/turf	Rural	Yes	Yes	No	No	None	81			Village of Roscoe	Local		80%-100% of shoulder is higher than road. Potholes were filled.
Flagler Dr	Willowbrook Rd	Cul-de-sac	0.067	28	1,101	1098	HMA	None	Urban	Yes	Yes	Yes	No	None	81			Village of Roscoe	Local		
Joncey Dr	Elevator Rd	Hathaway Trl	0.237	26	3,615	3620	HMA	None	Urban	Yes	Yes	Yes	Yes	None	81			Village of Roscoe	Local		
Night Owl Ln	Old River Rd	Hawks Pointe Trl	0.283	22	3,653	3646	HMA	Aggregate	Rural	Yes	Yes	No	No	None	81			Village of Roscoe	Local		
Pine White St	Clearwing Ln	Marblewing Rd	0.112	26	1,708	1705	HMA	None	Urban	Yes	Yes	Yes	No	None	81			Village of Roscoe	Local		
Prairienook	Nestlewood Dr	Cul-de-sac	0.108	24	1,521	1527	HMA	Turf	Rural	No	Yes	No	No	None	81			Village of Roscoe	Local		
Skipperling Rd	Metalmark Ln	Dead End	0.061	26	930	924	HMA	None	Urban	Yes	Yes	Yes	No	None	81			Village of Roscoe	Local		
Wainwright Ct	Rambouillet Rdg	Cul-de-sac	0.035	28	575	570	HMA	None	Urban	Yes	Yes	Yes	Yes	None	81			Village of Roscoe	Local		

Street Name	From	To	Length (Mi)	Width (LF)	Area (SY) - calc	Area (SY)	Pavement Type	Shoulder Type	Urban/Rural	Sewer	Water	Storm Sewer	Sidewalks	Sidewalk Condition	PCR	Inspection Comments	ADT-2012	Jurisdiction	Functional Class	Year of Last Improvement	Notes
Baneberry Dr	Hononegah Rd	Prairie Rose Dr	0.304	32	5,707	5704	HMA	None	Urban	Yes	Yes	Yes	No	None	82			Village of Roscoe	Local		
Clearwing Ln	Roscoe Rd	Dead End	0.509	26	7,764	7769	HMA	None	Urban	Yes	Yes	Yes	No	None	82			Village of Roscoe	Local		Dead end has no turn around
Cotton Thistle	Lemon Grass Ln	Angelica Ln	0.224	22	2,891	2888	HMA	Turf	Rural	Yes	Yes	No	No	None	82	Patching in several areas		Village of Roscoe	Local		
Glenn Dr	Main St	Dead End	0.183	20	2,147	2146	HMA	Turf	Rural	Yes	Yes	No	No	None	82			Village of Roscoe	Local		Dead end has no turn around
Oak Village Dr	Andrews Dr	Andrews Dr	0.139	24	1,957	1952	HMA	None	Urban	Yes	Yes	Yes	No	None	82			Village of Roscoe	Local		
Prairie Rose Dr	Bluestem Rd	Baneberry Dr	0.492	32	9,236	9239	HMA	None	Urban	Yes	Yes	Yes	No	None	82			Village of Roscoe	Local		
Rockrose Dr	Hononegah Rd	Dead End	0.140	32	2,628	2626	HMA	None	Urban	Yes	Yes	Yes	No	None	82			Village of Roscoe	Local		Dead end has no turn around
Tall Pines Pkwy	N 2nd St	Cul-de-sac	0.315	26	4,805	4809	HMA	None	Urban	Yes	Yes	Yes	No	None	82			Village of Roscoe	Local		
Arena Dr	Equine Dr	Love Rd	0.206	20	2,417	2414	Chip Seal	Turf	Rural	No	No	No	No	None	83			Village of Roscoe	Local		Patching was done
Bitterroot Rd	Flatwillow Dr	Gray Eagle Rd	0.347	22	4,479	4475	HMA	Turf	Rural	Yes	Yes	No	No	None	83			Village of Roscoe	Local		
Clayton Circle	Elevator Rd	Elevator Rd	0.389	28	6,390	6392	HMA	Turf/None	Combination	Yes	Yes	No	No	None	83	Patching in several areas	2025	Village of Roscoe	Local		
Crocker Ct	Willowbrook Rd	Cul-de-sac	0.067	28	1,101	1098	HMA	None	Urban	Yes	Yes	Yes	No	None	83			Village of Roscoe	Local		
Finns Crossing	Southdown Ln	Targee Trl	0.166	24	2,337	2333	HMA	Turf	Rural	No	Yes	No	No	None	83			Village of Roscoe	Local		80%-100% of shoulder is higher than the road.
Mahongany Ln	Mobile Home Park	Jan Memorial Dr	0.161	32	3,023	3018	HMA	None	Urban	Yes	Yes	Yes	No	None	83			Village of Roscoe	Local		
McDonald Rd	Willowbrook Rd	Swanson Rd	0.356	24	5,012	5019	HMA	Aggregate	Rural	No	No	No	No	None	83		3000	Village of Roscoe	Major Collector		
Metalmark Ln	Roscoe Rd	Mosaic Ln	0.464	26	7,078	7081	HMA	None	Urban	Yes	Yes	Yes	No	None	83			Village of Roscoe	Local		
Pappy Brown Dr	Bridge St	Grove St	0.083	22	1,071	1073	HMA	Turf	Rural	No	Yes	No	No	None	83			Village of Roscoe	Local		
Ross Ln	Main St	Dead End	0.103	22	1,329	1323	HMA	Turf	Rural	Yes	Yes	No	No	None	83			Village of Roscoe	Local		
Southdown Ln	Rambouillet Rdg	McDonald Rd	0.390	22	5,034	5033	HMA	Turf	Rural	No	Yes	No	No	None	83			Village of Roscoe	Local		Southside of road cracks were filled up untill Finns crossing.
Swanson Dr	Swanson Ct	Erickson Dr	0.149	32	2,797	2788	HMA	Aggregate/turf	Rural	Partial	No	No	No	None	83			Village of Roscoe	Local		
Wallace Dr	Main St	Dead End	0.142	20	1,666	1660	HMA	Turf	Rural	Yes	Yes	No	No	None	83			Village of Roscoe	Local		Dead end has no turn around
Corriedale Run	Montadale Dr	Southdown Ln	0.304	26	4,637	4630	HMA	None	Urban	Yes	Yes	Yes	Yes	None	84			Village of Roscoe	Local		Road had been patched
Cotton Grass Ct	Goosedown Dr	Cul-de-sac	0.027	24	380	380	HMA	Aggregate/Turf	Rural	Yes	Yes	No	No	None	84			Village of Roscoe	Local		
Meadowsweet Ln	Purple Sage Dr	Lemon Grass Ln	0.182	24	2,563	2559	HMA	Turf	Rural	Yes	Yes	No	No	None	84			Village of Roscoe	Local		
Merino Run	Rambouillet Rdg	Cul-de-sac	0.132	22	1,704	1710	HMA	Turf	Rural	No	Yes	No	No	None	84			Village of Roscoe	Local		
Quality Dr	Performance Dr	Supply Rd	0.078	34	1,556	1549	HMA	None	Urban	Yes	Yes	Yes	No	None	84			Village of Roscoe	Local		
Schaumburg Ln	Joncey Dr	Roscoe Township Border	0.282	28	4,632	4630	HMA	None	Urban	Yes	Yes	Yes	Yes	None	84			Village of Roscoe	Local		
Southdown Ct	Southdown Ln	Cul-de-sac	0.114	22	1,471	1467	HMA	Turf	Rural	No	Yes	No	No	None	84			Village of Roscoe	Local		
Targee Ct	Targee Trl	Cul-de-sac	0.062	22	800	805	HMA	Turf	Rural	No	Yes	No	No	None	84			Village of Roscoe	Local		
Thribble Cross	Romeldale Ln	Corriedale Run	0.236	26	3,600	3594	HMA	None	Urban	Yes	Yes	Yes	Yes	None	84			Village of Roscoe	Local		
Downing Ct	Downing Ln	Cul-de-sac	0.034	28	559	551	HMA	None	Urban	Yes	Yes	Yes	Yes	None	85			Village of Roscoe	Local		
Floyd Dr	Dorothy Ln	Hathaway Trl	0.084	28	1,380	1372	HMA	None	Urban	Yes	Yes	Yes	Yes	None	85			Village of Roscoe	Local		
McDonald Rd	Rambouillet Rdg	Willowbrook Rd	0.494	24	6,956	6954	HMA	Aggregate	Rural	No	Yes	No	No	None	85		1900	Village of Roscoe	Major Collector		
McDonald Rd	Main St	Rambouillet Rdg	0.506	24	7,124	7131	HMA	Aggregate	Rural	Partial	Yes	No	No	None	85		2750	Village of Roscoe	Major Collector		
Romeldale Ln	Tall Pines Pkwy	Montadale Dr	0.080	26	1,220	1222	HMA	None	Urban	Yes	Yes	Yes	No	None	85			Village of Roscoe	Local		
Swanson Dr	Erickson Dr	Mahongany Ln	0.164	32	3,079	3081	HMA	None	Urban	Yes	Yes	Yes	No	None	85			Village of Roscoe	Local		
Tansy Ct	Lemon Grass Ln	Cul-de-sac	0.082	22	1,058	1058	HMA	Turf	Rural	Yes	Yes	No	No	None	85			Village of Roscoe	Local		
Targee Trl	Rambouillet Rdg	McDonald Rd	0.276	22	3,562	3562	HMA	Turf	Rural	No	Yes	No	No	None	85			Village of Roscoe	Local	2018	
Thompson Dr	Pearl St	Bridge St	0.204	20	2,394	2392	HMA	Turf	Rural	Yes	Yes	No	No	None	85			Village of Roscoe	Local		
Crabapple Ct	Hidden Creek Ln	Cul-de-sac	0.157	22	2,026	2021	HMA	Turf	Rural	No	No	No	No	None	86			Village of Roscoe	Local		

Street Name	From	To	Length (Mi)	Width (LF)	Area (SY) - calc	Area (SY)	Pavement Type	Shoulder Type	Urban/Rural	Sewer	Water	Storm Sewer	Sidewalks	Sidewalk Condition	PCR	Inspection Comments	ADT-2012	Jurisdiction	Functional Class	Year of Last Improvement	Notes
Erickson Dr	Swanson Dr	IL-251 Frontange Rd	0.120	32	2,253	2247	HMA	None	Urban	Yes	Yes	Yes	No	None	86			Village of Roscoe	Local		
Romeldale Ln	Leicester Way	Southdown Ln	0.109	26	1,663	1662	HMA	None	Urban	Yes	Yes	Yes	Yes	None	86			Village of Roscoe	Local		
Woodbury Ridge Dr	McCurry Road	Woodcrest Ln	0.102	26	1,556	1561	HMA	None	Urban	Yes	Yes	Yes	Yes	None	86			Village of Roscoe	Local		
Woodcliff Ln	Woodbury Ridge Dr	Cul-de-sac	0.269	26	4,103	4107	HMA	None	Urban	Yes	Yes	Yes	Yes	None	86			Village of Roscoe	Local		
Woodcrest Ln	Woodcliff Ln	Woodbury Ridge Dr	0.201	26	3,066	3064	HMA	None	Urban	Yes	Yes	Yes	Yes	None	86			Village of Roscoe	Local		
Downing Ln	Reimer Dr	Cul-de-sac	0.244	28	4,008	4005	HMA	None	Urban	Yes	Yes	Yes	Yes	None	87			Village of Roscoe	Local		
Ginseng Dr	Hawks Pointe Trl	Dead End	0.027	22	348	350	HMA	Turf	Rural	No	No	No	No	None	87			Village of Roscoe	Local		Dead end has no turn around
Sorrvice Dr	Cul-de-sac	Flagler Dr	0.153	28	2,513	2508	HMA	None	Urban	Yes	Yes	Yes	No	None	87			Village of Roscoe	Local		
Sprague Rd	Roscoe Rd	Liddle Rd	0.768	18	8,110	7874	Chip Seal	Turf	Rural	No	Partial	No	No	None	87		125	Village of Rockton	Local		Extreme edge breaks
Angelica Ln	Linden Blossom Ln	Cotton Thistle	0.076	22	981	985	HMA	Turf	Rural	Yes	Yes	No	No	None	88	Patching in several areas		Village of Roscoe	Local		
Cherrywood	Highstone Dr	Prairie Flower	0.539	22	6,957	6955	HMA	Turf	Rural	No	Yes	No	No	None	88			Village of Roscoe	Local		
Cheviot Dr	Southdown Ln	Targee Trl	0.148	22	1,910	1913	HMA	Turf	Rural	No	Yes	No	No	None	88			Village of Roscoe	Local		
Pinesap Place	Goosedown Dr	Cul-de-sac	0.042	22	542	537	HMA	Turf	Rural	Yes	Yes	No	No	None	88			Village of Roscoe	Local		
River St	Bridge St	Frankies Ln	0.217	18	2,292	2290	HMA/Chip Seal	Turf	Rural	Partial	Partial	No	No	None	88			Village of Roscoe	Local		
Willowbrook Rd	Rockton Road	South Beloit Border	0.480	40	11,264	11253	HMA/PCC	Aggregate	Rural	Partial	Yes	No	No	None	88		4500	Village of Roscoe	Minor Arterial		
Willowbrook Rd	McCurry Road	Rockton Road	1.003	40	23,537	23530	HMA/PCC	Aggregate	Rural	Partial	Yes	No	No	None	88		4500	Roscoe Township	Minor Arterial		
Terragon Ct	Chicory Rdige Way	Cul-de-sac	0.036	22	465	461	HMA	Aggregate	Rural	Yes	Yes	No	No	None	89			Village of Roscoe	Local		
Checkerberry Dr	Hononegah Rd	Bluestem Rd	0.054	26	824	817	HMA	None	Urban	Yes	Yes	Yes	No	None	90			Village of Roscoe	Local		
1st St	Harrison St	Chestnut St	0.159	22	2,052	2048	HMA	Aggregate	Rural	No	No	No	No	None	92	Patching in several areas		Village of Roscoe	Local	2023	
2nd St	Harrison St	Elevator Rd	0.782	24	11,011	11016	HMA	Aggregate	Rural	No	No	No	No	None	92			Village of Roscoe	Local	2023	Cracks were filled
All World Way	Willowbrook Rd	Cul-de-sac	0.166	34	3,311	3306	HMA	None	Urban	Yes	Yes	Yes	No	None	92			Village of Roscoe	Local		
Bluestem Rd	Baneberry Dr	Prairie Rose Dr	0.342	26	5,217	5221	HMA	None	Urban	Yes	Yes	Yes	No	None	92			Village of Roscoe	Local		
Harrison Ct	Harrison St	Cul-de-sac	0.192	26	2,929	2931	HMA	None	Urban	Yes	Yes	Yes	Yes	None	93			Village of Roscoe	Local		Cracks were filled
N 2nd St (Main St)	McCurry Road	Township Border	0.427	24	6,012	6019	HMA	Aggregate	Rural	Partial	Yes	No	No	None	93	Patching in several areas	600	Village of Roscoe	Local		Potholes were filled
Country Ct	N 2nd St	Cul-de-sac	0.272	22	3,511	3512	HMA	Turf	Rural	Partial	Yes	No	No	None	94			Village of Roscoe	Local		Potholes were filled. 50% of the shoulder is higher than the road.
Country Hill Rd	Country Ct	Dead End	0.052	22	671	791	HMA	Aggregate	Rural	No	Yes	No	No	None	94			Village of Roscoe	Local		80%-100% of shoulder is higher than the road. Dead end has no turn around.
Karakul Terrace	Montadale Dr	Romeldale Ln	0.209	28	3,433	3439	HMA	None	Urban	Yes	Yes	Yes	Yes	None	94			Village of Roscoe	Local		First 100 ft was redone.
Montadale Dr	Karkul Terrace	Romeldale Ln	0.118	26	1,800	1805	HMA	None	Urban	Yes	Yes	Yes	Yes	None	94			Village of Roscoe	Local		First 100 ft was not redone.
N 2nd St	McDonald Rd	Swanson Rd	0.812	22	10,480	10484	HMA	Aggregate	Rural	Yes	Yes	No	No	None	94			Village of Roscoe	Local		
Romeldale Ln	Montadale Dr	Leicester Way	0.370	26	5,644	5645	HMA	None	Urban	Yes	Yes	Yes	Yes	None	94			Village of Roscoe	Local		
Grove St	Mulberry St	Main St	0.077	22	994	993	HMA	Aggregate	Rural	Yes	Yes	No	No	None	95	Patching in several areas & around MHs		Village of Roscoe	Local		
Mulberry St	Bridge St	Grove St	0.074	22	955	953	HMA	Aggregate	Rural	Yes	Yes	No	No	None	95	Patching in several areas		Village of Roscoe	Local		
Swanson Dr	Mahongany Ln	Village Limits	0.152	32	2,854	2851	HMA	None	Urban	Yes	Yes	Yes	No	None	95			Village of Roscoe	Local		
3rd St	Harrison St	Chestnut St	0.158	22	2,039	2040	HMA	Aggregate	Rural	Yes	Yes	No	No	None	96	Patching in several areas		Village of Roscoe	Local	2023	
4th St	Harrison St	Chestnut St	0.159	22	2,052	2047	HMA	Aggregate	Rural	No	Partial	No	No	None	96			Village of Roscoe	Local	2023	
6th St	Harrison St	Chestnut St	0.160	20	1,877	1875	HMA	Aggregate	Rural	No	No	No	No	None	96	Patching at Broad St intersection		Village of Roscoe	Local	2023	
Acadia St	Hawks Pointe Trl	Dead End	0.273	24	3,844	3841	HMA	Aggregate/Turf	Rural	Yes	Yes	No	No	None	96			Village of Roscoe	Local		
Angelica Ln	Cotton Thistle	Chicory Ridge Way	0.419	24	5,900	5905	HMA	Aggregate	Rural	Yes	Yes	No	No	None	96			Village of Roscoe	Local	2022	
Applegate Dr	Foxdale St	Roscoe Township Border	0.463	22	5,976	5979	HMA	Aggregate	Rural	No	Yes	No	No	None	96			Village of Roscoe	Local	2023	
Biscayne Pl	Lismore Rd	Dead End	0.368	23	4,966	4961	HMA	Aggregate/Turf	Rural	Yes	Yes	No	No	None	96			Village of Roscoe	Local		Dead end has no turn around

Street Name	From	To	Length (Mi)	Width (LF)	Area (SY) - calc	Area (SY)	Pavement Type	Shoulder Type	Urban/Rural	Sewer	Water	Storm Sewer	Sidewalks	Sidewalk Condition	PCR	Inspection Comments	ADT-2012	Jurisdiction	Functional Class	Year of Last Improvement	Notes
Broad St	Main St	Dead End	0.508	22	6,557	6556	HMA	Aggregate	Rural	Yes	Yes	No	Yes	None	96			Village of Roscoe	Local	2023	
Chestnut St	Main St	Burr Oak Rd	0.511	24	7,195	7197	HMA	Aggregate	Rural	Yes	Yes	No	Yes	None	96		2275	Village of Roscoe	Major Collector	2023	
Chicory Ridge Way	Roscoe Rd	Angelica Ln	0.396	22	5,111	5113	HMA	Aggregate	Rural	Yes	Yes	No	No	None	96			Village of Roscoe	Local	2022	
Cross St	Broad St	Reed Ln	0.078	20	915	912	HMA	Turf	Rural	No	No	No	No	None	96			Village of Roscoe	Local	2019	
Folkstone Ct	Sheringham Dr	Cul-de-sac	0.052	26	793	677	HMA	None	Urban	No	No	Yes	No	None	96			Village of Roscoe	Local	2021	
Harrison St	Main St	6th St	0.472	22	6,092	6087	HMA	Aggregate	Rural	No	Yes	No	No	None	96			Village of Roscoe	Local	2023	
Highstone Dr	Sawmill Dr	Nestlewood Dr	0.449	22	5,795	5791	HMA	Aggregate	Rural	No	Yes	No	No	None	96	Patching in several areas		Village of Roscoe	Local	2023	
Main St	Elevator Road	McCurry Road	0.922	26	14,064	14056	HMA	Aggregate/turf	Rural	Yes	Yes	No	No	None	96	Patching in several areas	1800	Village of Roscoe	Local		
Meadowsweet Ln	Roscoe Rd	Purple Sage Dr	0.687	24	9,673	9670	HMA	Aggregate	Rural	Yes	Yes	No	No	None	96	Patching in several areas		Village of Roscoe	Local	2022	
North St	2nd St	4th St	0.153	22	1,975	1970	Chip Seal	Turf	Rural	No	No	No	No	None	96			Village of Roscoe	Local	2019	Cracks were filled
Performance Dr	Willowbrook Rd (West)	Dead End	0.080	37	1,737	1738	HMA	None	Urban	No	No	Yes	No	None	96			Village of Roscoe	Local		
Prairie Flower	Cherrywood	Willowbrook Rd	0.362	25	5,309	5309	HMA	Aggregate	Rural	No	Yes	No	No	None	96			Village of Roscoe	Local		
Sawmill Dr	Applegate Dr	Highstone Dr	0.274	22	3,536	3536	HMA	Aggregate	Rural	No	Yes	No	No	None	96			Village of Roscoe	Local	2023	
Shamrock Ln	Main St	Cul-de-sac	0.054	22	697	703	HMA	Turf	Rural	No	No	No	No	None	96			Village of Roscoe	Local	2019	
Sheringham Dr	Swanson Rd	Dead End	0.728	26	11,104	11103	HMA	None	Urban	No	No	Yes	No	None	96	Patching in several areas		Village of Roscoe	Local	2021	Dead end has no turn around
Southdown Ln	Swanson Rd	Rambouillet Ridge	0.311	22	4,014	4018	HMA	Turf	Rural	Yes	Yes	No	No	None	96			Village of Roscoe	Local		Cracks had been filled
Tunbridge Ct	Sheringham Dr	Cul-de-sac	0.122	26	1,861	1858	HMA	None	Urban	No	No	Yes	No	None	96			Village of Roscoe	Local	2021	
Willobrook Rd	Elevator Road	McCurry Road	1.003	24	14,122	14128	HMA	Aggregate	Rural	Partial	Partial	No	No	None	96		2850	Village of Roscoe	Minor Arterial		Cracks were filled
Forest Ridge Dr	Gleasman Rd	Meadow Crossing Trl	0.431	22	5,563	5558	HMA	Turf	Rural	Yes	Yes	No	No	None	97			Village of Roscoe	Local	2018	Cracks were filled
Ivyleaf Ct	River View Trl	Cul-de-sac	0.038	22	490	486	HMA	Turf	Rural	Yes	Yes	No	No	None	97			Village of Roscoe	Local	2018	Cracks were filled
Meadow Crossing Trl	Forest Ridge Dr	River View Trl	0.063	22	813	815	HMA	Turf	Rural	Yes	Yes	No	No	None	97	Large patching in middle section of road		Village of Roscoe	Local	2018	Cracks were filled
Mulberry St	Grove St	Dead End	0.058	8	272	274	Gravel	Turf	Rural	No	No	No	No	None	97			Village of Roscoe	Local		
River View Trl	Gleasman Rd	Meadow Crossing Trl	0.434	22	5,601	5602	HMA	Turf	Rural	Yes	Yes	No	No	None	97	Patching in several areas		Village of Roscoe	Local	2018	Cracks were filled
Stonemint Dr	Forest Ridge Dr	River View Trl	0.109	22	1,407	1401	HMA	Turf	Rural	Yes	Yes	No	No	None	97	Patching in several areas		Village of Roscoe	Local	2018	Cracks were filled
Teaberry Ct	River View Trl	Cul-de-sac	0.028	24	394	397	HMA	Turf	Rural	Yes	Yes	No	No	None	97	Patching in several areas		Village of Roscoe	Local	2018	Cracks were filled
Lismore Rd	Roscoe Rd	Biscayne Place	0.563	26	8,588	8595	HMA	Aggregate	Rural	Yes	Yes	No	No	None	98	Patching in several areas		Village of Roscoe	Local	2020	
Murphy's Run	Main St	Cul-de-sac	0.071	22	916	916	HMA	Aggregate/turf	Rural	No	No	No	No	None	98			Village of Roscoe	Local	2019	Cracks were filled
Reed Ln	Race St	Dead End	0.090	18	950	956	HMA	Turf	Rural	No	No	No	No	None	98	Patching in several areas		Village of Roscoe	Local	2019	Dead end has no turn around
Andrews Dr	Parkway Dr	Clayton Circle	0.296	24	4,168	4169	HMA	Turf	Rural	Yes	Yes	No	No	None	100			Village of Roscoe	Local	2025	Included in 2025 Residential Streets Program.
Big Stone Circle	Promontory Trl	Promontory Trl	0.294	20	3,450	3447	HMA	None	Urban	No	No	Yes	No	None	100			Village of Roscoe	Local	2024	
Deer Crossing	Red Rose Trl	Hidden Creek Ln	0.267	22	3,446	3444	HMA	None	Urban	No	No	Yes	No	None	100			Village of Roscoe	Local	2024	
Hazel Close	Prairie Wind Place	Cul-de-sac	0.045	24	634	632	HMA	Turf	Rural	Yes	Yes	No	No	None	100			Village of Roscoe	Local	2025	Included in 2025 Residential Streets Program.
Hidden Creek Ln	White School Road	Cul-de-sac	0.547	22	7,060	7061	HMA	None	Urban	No	No	Yes	No	None	100			Village of Roscoe	Local	2024	
Hodges Run	Main St	2nd St	0.268	24	3,773	3775	HMA	Turf	Rural	Yes	Yes	No	No	None	100			Village of Roscoe	Local	2025	Included in 2025 Residential Streets Program.
Hodges Way	Hodges Run	Cul-de-sac	0.018	24	253	247	HMA	Turf	Rural	Yes	Yes	No	No	None	100			Village of Roscoe	Local	2025	Included in 2025 Residential Streets Program.
Parkway Dr	Clayton Circle	Dead End	0.132	22	1,704	1703	HMA	Aggregate/turf	Rural	Yes	Yes	No	No	None	100			Village of Roscoe	Local	2025	Dead end has no turn around. Included in 2025 Residential Streets Program.
Prairie Wind Place	Hodges Run	Cul-de-sac	0.117	24	1,647	1653	HMA	Turf	Rural	Yes	Yes	No	No	None	100			Village of Roscoe	Local	2025	Included in 2025 Residential Streets Program.
Promontory Trl	Rockton Rd	Cul-de-sac	0.508	26	7,749	7746	HMA	None	Urban	No	No	Yes	No	None	100	Patching in several areas		Village of Roscoe	Local	2024	Last 100 ft was not redone
Rambouillet Rdg	Southdown Ln	Sweet Grass Dr	0.816	28	13,404	13401	HMA	None	Rural	No	Yes	No	Yes	None	100			Village of Roscoe	Local	2018	Cracks had been filled
Red Rose Trl	Timber Ridge Rd	Dead end	0.273	26	4,164	4159	HMA	None	Urban	No	No	Yes	No	None	100			Village of Roscoe	Local	2024	Dead end has no turn around.



Street Name	From	To	Length (Mi)	Width (LF)	Area (SY) - calc	Area (SY)	Pavement Type	Shoulder Type	Urban/Rural	Sewer	Water	Storm Sewer	Sidewalks	Sidewalk Condition	PCR	Inspection Comments	ADT-2012	Jurisdiction	Functional Class	Year of Last Improvement	Notes
Rural Edge Dr	Main St	Flatwillow Dr	0.276	22	3,562	3568	HMA	Aggregate	Rural	No	No	No	No	None	100			Village of Roscoe	Local	2019	Cracks were filled
Targee Trl	Corriedale Run	Rambouillet Rdg	0.078	22	1,007	1003	HMA	Turf	Rural	No	Yes	No	No	None	100			Village of Roscoe	Local	2018	Last 100 ft was not redone
Ter Maat Ct	Andrews Dr	Andrews Dr	0.103	22	1,329	1325	HMA	Turf	Rural	Yes	Yes	No	No	None	100			Village of Roscoe	Local	2025	Included in 2025 Residential Streets Program.
Timber Ridge Road	Promontory Trl	Cul-de-sac	0.248	26	3,783	3783	HMA	None	Urban	No	No	Yes	No	None	100	Patching in several areas		Village of Roscoe	Local	2024	
Upper Ridge Way	McDonald Rd	Applegate Dr	0.504	24	7,096	7090	HMA	Aggregate	Rural	No	Yes	No	No	None	100			Village of Roscoe	Local	2023	
Wildwood Walk	Red Rose Trl	Cul-de-sac	0.040	20	469	466	HMA	None	Urban	No	No	Yes	No	None	100			Village of Roscoe	Local	2024	
Winding Way	Red Rose Trl	Cul-de-sac	0.167	20	1,959	1956	HMA	None	Urban	No	No	Yes	No	None	100			Village of Roscoe	Local	2024	

Legend
Maintenace year based on \$500,000/year budget
Year 1
Year 2
Year 3
Year 4
Year 5

Pavement Condition Ratings (PCR) Ordered by Street Name

Street Name	From	To	Length (Mi)	Width (LF)	Area (SY) - calc	Area (SY)	Pavement Type	Shoulder Type	Urban/Rural	Sewer	Water	Storm Sewer	Sidewalks	Sidewalk Condition	PCR	Inspection Comments	ADT-2012	Jurisdiction	Functional Class	Year of Last Improvement	Notes
1st St	Harrison St	Chestnut St	0.159	22	2,052	2048	HMA	Aggregate	Rural	No	No	No	No	None	92	Patching in several areas		Village of Roscoe	Local	2023	
2nd St	Harrison St	Elevator Rd	0.782	24	11,011	11016	HMA	Aggregate	Rural	No	No	No	No	None	92			Village of Roscoe	Local	2023	Cracks were filled
3rd St	Fry Dr	Kelmor Dr	0.182	22	2,349	2353	Chip Seal	Turf	Rural	No	No	No	No	None	71			Village of Roscoe	Local		
3rd St	Harrison St	Dead End	0.065	16	610	614	HMA	Turf	Rural	Yes	Yes	No	No	None	77			Village of Roscoe	Local		Dead end has no turn around
3rd St	Chestnut St	North St	0.079	18	834	834	Chip Seal	Turf	Rural	No	No	No	No	None	78			Village of Roscoe	Local		
3rd St	Harrison St	Chestnut St	0.158	22	2,039	2040	HMA	Aggregate	Rural	Yes	Yes	No	No	None	96	Patching in several areas		Village of Roscoe	Local	2023	
4th St	Chestnut St	Fry Dr	0.173	22	2,233	2231	Chip Seal	Turf	Rural	No	No	No	No	None	80			Village of Roscoe	Local		50% of shoulder is higher than road.
4th St	Harrison St	Chestnut St	0.159	22	2,052	2047	HMA	Aggregate	Rural	No	Partial	No	No	None	96			Village of Roscoe	Local	2023	
6th St	Chestnut St	Dead End	0.041	18	433	431	HMA	Aggregate	Rural	Yes	No	No	No	None	65			Village of Roscoe	Local		Dead end has no turn around
6th St	Harrison St	Chestnut St	0.160	20	1,877	1875	HMA	Aggregate	Rural	No	No	No	No	None	96	Patching at Broad St intersection		Village of Roscoe	Local	2023	
Acadia St	Hawks Pointe Trl	Dead End	0.273	24	3,844	3841	HMA	Aggregate/Turf	Rural	Yes	Yes	No	No	None	96			Village of Roscoe	Local		
Ada Dr	3rd St	Donald Dr	0.128	20	1,502	1502	Chip Seal	Turf	Rural	No	No	No	No	None	71			Village of Roscoe	Local		
All World Way	Willowbrook Rd	Cul-de-sac	0.166	34	3,311	3306	HMA	None	Urban	Yes	Yes	Yes	No	None	92			Village of Roscoe	Local		
Andrews Dr	Parkway Dr	Clayton Circle	0.296	24	4,168	4169	HMA	Turf	Rural	Yes	Yes	No	No	None	100			Village of Roscoe	Local	2025	Included in 2025 Residential Streets Program.
Angelica Ln	Linden Blossom Ln	Cotton Thistle	0.076	22	981	985	HMA	Turf	Rural	Yes	Yes	No	No	None	88	Patching in several areas		Village of Roscoe	Local		
Angelica Ln	Cotton Thistle	Chicory Ridge Way	0.419	24	5,900	5905	HMA	Aggregate	Rural	Yes	Yes	No	No	None	96			Village of Roscoe	Local	2022	
Applegate Dr	Foxdale St	Roscoe Township Border	0.463	22	5,976	5979	HMA	Aggregate	Rural	No	Yes	No	No	None	96			Village of Roscoe	Local	2023	
Applemint Ln	Purple Sage Dr	Dead End	0.028	22	361	363	HMA	Turf	Rural	Yes	Yes	No	No	None	81	Patching in several areas		Village of Roscoe	Local		Dead end has no turn around
Arena Dr	Equine Dr	Love Rd	0.206	20	2,417	2414	Chip Seal	Turf	Rural	No	No	No	No	None	83			Village of Roscoe	Local		Patching was done
Ashleigh Ln	Leana Dr	Lismore Rd	0.250	22	3,227	3232	HMA	Turf	Rural	Yes	Yes	No	No	None	77			Village of Roscoe	Local		80%-100% of shoulder is higher than road
Ballymore Rd	Leana Dr	Lismore Rd	0.272	22	3,511	3507	HMA	Turf	Rural	Yes	Yes	No	No	None	78			Village of Roscoe	Local		80%-100% of shoulder is higher than road
Baneberry Dr	Hononegah Rd	Prairie Rose Dr	0.304	32	5,707	5704	HMA	None	Urban	Yes	Yes	Yes	No	None	82			Village of Roscoe	Local		
Bergamot Way	Linden Blossom Ln	Calenoula St	0.286	22	3,691	3694	HMA	Turf	Rural	Yes	Yes	No	No	None	70			Village of Roscoe	Local		
Big Stone Circle	Promontory Trl	Promontory Trl	0.294	20	3,450	3447	HMA	None	Urban	No	No	Yes	No	None	100			Village of Roscoe	Local	2024	
Biscayne Pl	Lismore Rd	Dead End	0.368	23	4,966	4961	HMA	Aggregate/Turf	Rural	Yes	Yes	No	No	None	96			Village of Roscoe	Local		Dead end has no turn around
Bitterroot Rd	Flatwillow Dr	Gray Eagle Rd	0.347	22	4,479	4475	HMA	Turf	Rural	Yes	Yes	No	No	None	83			Village of Roscoe	Local		
Bluestem Rd	Baneberry Dr	Prairie Rose Dr	0.342	26	5,217	5221	HMA	None	Urban	Yes	Yes	Yes	No	None	92			Village of Roscoe	Local		
Borage Trl	Dead End	Purple Sage Dr	0.377	22	4,866	4867	HMA	Aggregate/Turf	Rural	Yes	Yes	No	No	None	81	Patching in several areas		Village of Roscoe	Local		Dead end has no turn around
Brandy Bend Rd	Fawn Prairie Dr	Hawks Pointe Trl	0.263	24	3,703	3701	HMA	Aggregate/Turf	Rural	Yes	Yes	No	No	None	74			Village of Roscoe	Local		50% of shoulder is higher than road
Broad St	Main St	Cross St	0.117	20	1,373	1375	HMA	Turf	Rural	No	No	No	No	None	81			Village of Roscoe	Local		
Broad St	Main St	Dead End	0.508	22	6,557	6556	HMA	Aggregate	Rural	Yes	Yes	No	Yes	None	96			Village of Roscoe	Local	2023	
Calenoula St	Lemon Grass Ln	Bergamot Way	0.204	22	2,633	2637	HMA	Turf	Rural	Yes	Yes	No	No	None	80	Patching in several areas		Village of Roscoe	Local		
Cartwright Ct	Rambouillet Rdg	Cul-de-sac	0.030	28	493	490	HMA	None	Urban	Yes	Yes	Yes	No	None	77			Village of Roscoe	Local		
Charlemont Rd	Leana Dr	Lismore Rd	0.103	22	1,329	1330	HMA	Turf	Rural	Yes	Yes	No	No	None	79			Village of Roscoe	Local		80%-100% of shoulder is higher than road
Checkerberry Dr	Hononegah Rd	Bluestem Rd	0.054	26	824	817	HMA	None	Urban	Yes	Yes	Yes	No	None	90			Village of Roscoe	Local		
Cherrywood	Highstone Dr	Prairie Flower	0.539	22	6,957	6955	HMA	Turf	Rural	No	Yes	No	No	None	88			Village of Roscoe	Local		
Chestnut St	Main St	Burr Oak Rd	0.511	24	7,195	7197	HMA	Aggregate	Rural	Yes	Yes	No	Yes	None	96		2275	Village of Roscoe	Major Collector	2023	
Cheviot Dr	Southdown Ln	Targee Trl	0.148	22	1,910	1913	HMA	Turf	Rural	No	Yes	No	No	None	88			Village of Roscoe	Local		
Chicory Ridge Way	Angelica Ln	Purple Sage Dr	0.435	22	5,614	5611	HMA	Aggregate/turf	Rural	Yes	Yes	No	No	None	81			Village of Roscoe	Local		80%-100% of shoulder is higher than road. Potholes were filled.
Chicory Ridge Way	Roscoe Rd	Angelica Ln	0.396	22	5,111	5113	HMA	Aggregate	Rural	Yes	Yes	No	No	None	96			Village of Roscoe	Local	2022	

Street Name	From	To	Length (Mi)	Width (LF)	Area (SY) - calc	Area (SY)	Pavement Type	Shoulder Type	Urban/Rural	Sewer	Water	Storm Sewer	Sidewalks	Sidewalk Condition	PCR	Inspection Comments	ADT-2012	Jurisdiction	Functional Class	Year of Last Improvement	Notes
Cinnabar Dr	Rambouillet Rdg	Cul-de-sac	0.355	22	4,582	4584	HMA	Turf	Rural	No	Yes	No	No	None	64			Village of Roscoe	Local		80%-100% of the shoulder is higher than the road.
Clay Ct	Sawmill Dr	Cul-de-sac	0.096	22	1,239	1244	HMA	Turf	Rural	No	Yes	No	No	None	73			Village of Roscoe	Local		Potholes were filled
Clayton Circle	Elevator Rd	Elevator Rd	0.389	28	6,390	6392	HMA	Turf/None	Combination	Yes	Yes	No	No	None	83	Patching in several areas	2025	Village of Roscoe	Local		
Clearwing Ln	Roscoe Rd	Dead End	0.509	26	7,764	7769	HMA	None	Urban	Yes	Yes	Yes	No	None	82			Village of Roscoe	Local		Dead end has no turn around
Common Rose St	Metalmark Ln	Clearwing Ln	0.130	26	1,983	1984	HMA	None	Urban	Yes	Yes	Yes	No	None	77			Village of Roscoe	Local		
Corriedale Run	Montadale Dr	Southdown Ln	0.304	26	4,637	4630	HMA	None	Urban	Yes	Yes	Yes	Yes	None	84			Village of Roscoe	Local		Road had been patched
Cotton Grass Ct	Goosedown Dr	Cul-de-sac	0.027	24	380	380	HMA	Aggregate/Turf	Rural	Yes	Yes	No	No	None	84			Village of Roscoe	Local		
Cotton Thistle	Lemon Grass Ln	Angelica Ln	0.224	22	2,891	2888	HMA	Turf	Rural	Yes	Yes	No	No	None	82	Patching in several areas		Village of Roscoe	Local		
Country Ct	N 2nd St	Cul-de-sac	0.272	22	3,511	3512	HMA	Turf	Rural	Partial	Yes	No	No	None	94			Village of Roscoe	Local		Potholes were filled. 50% of the shoulder is higher than the road.
Country Hill Rd	Country Ct	Dead End	0.052	22	671	791	HMA	Aggregate	Rural	No	Yes	No	No	None	94			Village of Roscoe	Local		80%-100% of shoulder is higher than the road. Dead end has no turn around.
Coyote Trl	Dead End	Rural Edge Dr	0.119	22	1,536	1541	HMA	Turf	Rural	No	No	No	No	None	73			Village of Roscoe	Local		Dead end has no turn around. Half of road was redone.
Crabapple Ct	Hidden Creek Ln	Cul-de-sac	0.157	22	2,026	2021	HMA	Turf	Rural	No	No	No	No	None	86			Village of Roscoe	Local		
Crescent Ct	Prairie Flower	Cul-de-sac	0.082	22	1,058	1063	HMA	Turf	Rural	No	Yes	No	No	None	76			Village of Roscoe	Local		50% of the shoulder is higher than the road.
Crocker Ct	Willowbrook Rd	Cul-de-sac	0.067	28	1,101	1098	HMA	None	Urban	Yes	Yes	Yes	No	None	83			Village of Roscoe	Local		
Cross St	Broad St	Reed Ln	0.078	20	915	912	HMA	Turf	Rural	No	No	No	No	None	96			Village of Roscoe	Local	2019	
Deer Crossing	Red Rose Trl	Hidden Creek Ln	0.267	22	3,446	3444	HMA	None	Urban	No	No	Yes	No	None	100			Village of Roscoe	Local	2024	
Deerwood Ct	Rambouillet Rdg	Cul-de-sac	0.036	28	591	599	HMA	None	Urban	Yes	Yes	Yes	No	None	76			Village of Roscoe	Local		
Densmore Dr	Prairie Flower	Twin Deer Run	0.157	22	2,026	2023	HMA	Turf	Rural	No	Yes	No	No	None	74			Village of Roscoe	Local		50% of the shoulder is higher than the road.
Donald Dr	Ada Dr	Cul-de-sac	0.137	20	1,607	1604	Chip Seal	Turf	Rural	No	No	No	No	None	72			Village of Roscoe	Local		
Dorothy Ln	Joncey Dr	Floyd Dr	0.265	28	4,353	3415	HMA	None	Urban	Yes	Yes	Yes	Yes	None	80			Village of Roscoe	Local		
Double Ditch Cir	McDonald Rd	Cul-de-sac	0.042	22	542	541	HMA	Aggregate	Rural	No	No	No	No	None	75			Village of Roscoe	Local		
Downing Ct	Downing Ln	Cul-de-sac	0.034	28	559	551	HMA	None	Urban	Yes	Yes	Yes	Yes	None	85			Village of Roscoe	Local		
Downing Ln	Reimer Dr	Cul-de-sac	0.244	28	4,008	4005	HMA	None	Urban	Yes	Yes	Yes	Yes	None	87			Village of Roscoe	Local		
Edgefield	Cherrywood	Prairie Flower	0.424	22	5,472	5478	HMA	Turf	Rural	No	Yes	No	No	None	73			Village of Roscoe	Local		Potholes were filled.
Edgemere Terrace	Hononegah Rd	Roscoe Township Border	0.364	22	4,698	4701	HMA	Turf	Combination	Yes	Yes	No	No	None	79			Village of Roscoe	Local		Potholes were filled
Edith Ln	Main St	Dead End	0.274	26	4,179	4183	HMA	Turf	Rural	No	No	No	No	None	69			Village of Roscoe	Local		Dead end has no turn around
Elberon Rd	Dead End	Lismore Rd	0.176	22	2,272	2269	HMA	Turf	Rural	Yes	Yes	No	No	None	76	Patching in several areas		Village of Roscoe	Local		Dead end has no turn around. 80%-100% of shoulder is higher than road.
Equine Dr	Saddle Club Dr	Cul-de-sac	0.140	22	1,807	1804	Chip Seal	Turf	Rural	No	No	No	No	None	79			Roscoe Township	Local		
Erickson Dr	Swanson Dr	IL-251 Frontange Rd	0.120	32	2,253	2247	HMA	None	Urban	Yes	Yes	Yes	No	None	86			Village of Roscoe	Local		
Fawn Prairie Dr	Goosedown Dr	Thickett Trail	0.297	24	4,182	4186	HMA	Turf	Rural	Yes	Yes	No	No	None	77			Village of Roscoe	Local		Patching was done
Finns Crossing	Southdown Ln	Targee Trl	0.166	24	2,337	2333	HMA	Turf	Rural	No	Yes	No	No	None	83			Village of Roscoe	Local		80%-100% of shoulder is higher than the road.
Flagler Dr	Willowbrook Rd	Cul-de-sac	0.067	28	1,101	1098	HMA	None	Urban	Yes	Yes	Yes	No	None	81			Village of Roscoe	Local		
Flatwillow Dr	Main St	Rural Edge Dr	0.191	24	2,689	2689	HMA	Aggregate/turf	Rural	Partial	Partial	No	No	None	68			Village of Roscoe	Local		
Flint Ct	Sawmill Dr	Cul-de-sac	0.119	22	1,536	1539	HMA	Turf	Rural	No	Yes	No	No	None	67			Village of Roscoe	Local		Some potholes had been filled.
Floyd Dr	Dorothy Ln	Hathaway Trl	0.084	28	1,380	1372	HMA	None	Urban	Yes	Yes	Yes	Yes	None	85			Village of Roscoe	Local		
Folkstone Ct	Sheringham Dr	Cul-de-sac	0.052	26	793	677	HMA	None	Urban	No	No	Yes	No	None	96			Village of Roscoe	Local	2021	
Forest Ridge Dr	Gleasant Rd	Meadow Crossing Trl	0.431	22	5,563	5558	HMA	Turf	Rural	Yes	Yes	No	No	None	97			Village of Roscoe	Local	2018	Cracks were filled
Foxdale St	Twin Deer Run	Edgefield	0.238	22	3,072	3071	HMA	Turf	Rural	No	Yes	No	No	None	74			Village of Roscoe	Local		80%-100% of the shoulder is higher than the road.
Frankies Ln	River St	Cul-de-sac	0.066	22	852	858	HMA	Turf	Rural	No	No	No	No	None	56			Village of Roscoe	Local		
Franklin St	Bridge St	River St	0.155	22	2,001	1998	HMA	Turf	Rural	Yes	Yes	No	No	None	73	Patching in several areas		Village of Roscoe	Local		

Street Name	From	To	Length (Mi)	Width (LF)	Area (SY) - calc	Area (SY)	Pavement Type	Shoulder Type	Urban/Rural	Sewer	Water	Storm Sewer	Sidewalks	Sidewalk Condition	PCR	Inspection Comments	ADT-2012	Jurisdiction	Functional Class	Year of Last Improvement	Notes
Fry Dr	2nd St	Donald Dr	0.253	22	3,265	3265	Chip Seal	Turf	Rural	No	No	No	No	None	67			Village of Roscoe	Local		
Geneva Ct	Geneva Dr	Cul-de-sac	0.079	28	1,298	1295	HMA	None	Urban	Yes	Yes	Yes	No	None	73			Village of Roscoe	Local		
Geneva Dr	Bridge St	Coyote Trl	0.265	22	3,420	4352	HMA	Turf	Rural	Partial	Partial	No	No	None	64			Village of Roscoe	Local		
Ginseng Dr	Hawks Pointe Trl	Dead End	0.027	22	348	350	HMA	Turf	Rural	No	No	No	No	None	87			Village of Roscoe	Local		Dead end has no turn around
Glenn Dr	Main St	Dead End	0.183	20	2,147	2146	HMA	Turf	Rural	Yes	Yes	No	No	None	82			Village of Roscoe	Local		Dead end has no turn around
Goosedown Dr	Fawn Prairie Dr	Hawks Pointe Trl	0.226	24	3,182	3185	HMA	Turf	Rural	Yes	Yes	No	No	None	80			Village of Roscoe	Local		
Gray Eagle Rd	Bitterroot Rd	Cul-de-sac	0.078	22	1,007	1002	HMA	Turf	Rural	No	No	No	No	None	70			Village of Roscoe	Local		
Greystone	Applegate Dr	Dead End	0.251	24	3,534	3541	HMA	Turf	Rural	No	Yes	No	No	None	62			Village of Roscoe	Local		75%-100% of the shoulder is higher than the road. Dead end has no turn around.
Grove St	Main St	Pappy Brown Dr	0.146	22	1,884	1883	HMA	Turf	Rural	Yes	Yes	No	No	None	69	Patching around MHs		Village of Roscoe	Local		
Grove St	Mulberry St	Main St	0.077	22	994	993	HMA	Aggregate	Rural	Yes	Yes	No	No	None	95	Patching in several areas & around MHs		Village of Roscoe	Local		
Harrison Ct	Harrison St	Cul-de-sac	0.192	26	2,929	2931	HMA	None	Urban	Yes	Yes	Yes	Yes	None	93			Village of Roscoe	Local		Cracks were filled
Harrison St	Main St	6th St	0.472	22	6,092	6087	HMA	Aggregate	Rural	No	Yes	No	No	None	96			Village of Roscoe	Local	2023	
Hawks Pointe Trl	Roscoe Rd	Acadia St	0.532	22	6,866	6868	HMA	Turf	Rural	Yes	Yes	No	No	None	78			Village of Roscoe	Local		
Hazel Close	Prairie Wind Place	Cul-de-sac	0.045	24	634	632	HMA	Turf	Rural	Yes	Yes	No	No	None	100			Village of Roscoe	Local	2025	Included in 2025 Residential Streets Program.
Hidden Creek Ln	White School Road	Cul-de-sac	0.547	22	7,060	7061	HMA	None	Urban	No	No	Yes	No	None	100			Village of Roscoe	Local	2024	
High St	Bridge St	Dead End	0.253	22	3,265	3265	HMA	Turf	Rural	No	No	No	No	None	79	Patching in several areas		Village of Roscoe	Local		
Highstone Dr	Sawmill Dr	Nestlewood Dr	0.449	22	5,795	5791	HMA	Aggregate	Rural	No	Yes	No	No	None	96	Patching in several areas		Village of Roscoe	Local	2023	
Hodges Run	Main St	2nd St	0.268	24	3,773	3775	HMA	Turf	Rural	Yes	Yes	No	No	None	100			Village of Roscoe	Local	2025	Included in 2025 Residential Streets Program.
Hodges Way	Hodges Run	Cul-de-sac	0.018	24	253	247	HMA	Turf	Rural	Yes	Yes	No	No	None	100			Village of Roscoe	Local	2025	Included in 2025 Residential Streets Program.
Ivyleaf Ct	River View Trl	Cul-de-sac	0.038	22	490	486	HMA	Turf	Rural	Yes	Yes	No	No	None	97			Village of Roscoe	Local	2018	Cracks were filled
Jasmine Dr	Cotton Thistle	Valerian Way	0.570	22	7,357	7356	HMA	Turf	Rural	Yes	Yes	No	No	None	75			Village of Roscoe	Local		
Joncey Dr	Elevator Rd	Hathaway Trl	0.237	26	3,615	3620	HMA	None	Urban	Yes	Yes	Yes	Yes	None	81			Village of Roscoe	Local		
Karakul Terrace	Tall Pines Pkwy	Montadale Dr	0.072	28	1,183	1184	HMA	None	Urban	Yes	Yes	Yes	Yes	None	79			Village of Roscoe	Local		
Karakul Terrace	Montadale Dr	Romeldale Ln	0.209	28	3,433	3439	HMA	None	Urban	Yes	Yes	Yes	Yes	None	94			Village of Roscoe	Local		First 100 ft was redone.
Kelmor Dr	2nd St	Cul-de-sac	0.179	22	2,310	2307	Chip Seal	Turf	Rural	No	No	No	No	None	74			Village of Roscoe	Local		
Leana Dr	Roscoe Rd	Biscayne Place	0.538	22	6,944	6940	HMA	Aggregate/Turf	Rural	Yes	Yes	No	No	None	70	Patching around MHs		Village of Roscoe	Local		Potholes were filled
Leicester Way	Swanson Rd	Corriedale Run	0.322	26	4,912	4918	HMA	None	Urban	Yes	Yes	Yes	Yes	None	80			Village of Roscoe	Local		
Lemon Grass Ln	Angelica Ln	Talentina Trl	0.612	22	7,899	7901	HMA	Aggregate/Turf	Rural	Yes	Yes	No	No	None	72			Village of Roscoe	Local		
Linden Blossom Ln	Angelica Ln	Valerian Way	0.587	22	7,576	7579	HMA	Turf	Rural	Yes	Yes	No	No	None	74			Village of Roscoe	Local		25% of the shoulder is higher than the road. Potholes have been filled.
Lismore Rd	Roscoe Rd	Biscayne Place	0.563	26	8,588	8595	HMA	Aggregate	Rural	Yes	Yes	No	No	None	98	Patching in several areas		Village of Roscoe	Local	2020	
Love Rd	McCurry Road	Rockton Road	1.110	24	15,629	15630	HMA	Turf	Rural	No	No	No	No	None	66	Patching in several areas	1400	Village of Roscoe	Major Collector		Cracks were filled
Mahongany Ln	Mobile Home Park	Jan Memorial Dr	0.161	32	3,023	3018	HMA	None	Urban	Yes	Yes	Yes	No	None	83			Village of Roscoe	Local		
Main St	Elevator Rd	McDonald Rd	1.768	34	35,266	35261	HMA/PCC	Aggregate	Rural	Yes	Yes	No	No	None	60		6362.5	Village of Roscoe	Major Collector		
Main St	Elevator Road	McCurry Road	0.922	26	14,064	14056	HMA	Aggregate/turf	Rural	Yes	Yes	No	No	None	96	Patching in several areas	1800	Village of Roscoe	Local		
Mainsail Dr	N 2nd St	Starboard Dr	0.193	25	2,831	2828	HMA	Aggregate	Rural	Partial	No	No	No	None	71			Village of Roscoe	Local		
Marblewing Rd	Morning Cloak St	Clearwing Ln	0.305	26	4,652	4648	HMA	None	Urban	Yes	Yes	Yes	No	None	77			Village of Roscoe	Local		
McDonald Rd	Willowbrook Rd	Swanson Rd	0.356	24	5,012	5019	HMA	Aggregate	Rural	No	No	No	No	None	83		3000	Village of Roscoe	Major Collector		
McDonald Rd	Rambouillet Rdg	Willowbrook Rd	0.494	24	6,956	6954	HMA	Aggregate	Rural	No	Yes	No	No	None	85		1900	Village of Roscoe	Major Collector		
McDonald Rd	Main St	Rambouillet Rdg	0.506	24	7,124	7131	HMA	Aggregate	Rural	Partial	Yes	No	No	None	85		2750	Village of Roscoe	Major Collector		
Meadow Crossing Trl	Forest Ridge Dr	River View Trl	0.063	22	813	815	HMA	Turf	Rural	Yes	Yes	No	No	None	97	Large patching in middle section of road		Village of Roscoe	Local	2018	Cracks were filled

Street Name	From	To	Length (Mi)	Width (LF)	Area (SY) - calc	Area (SY)	Pavement Type	Shoulder Type	Urban/Rural	Sewer	Water	Storm Sewer	Sidewalks	Sidewalk Condition	PCR	Inspection Comments	ADT-2012	Jurisdiction	Functional Class	Year of Last Improvement	Notes
Meadowbrook	Cherrywood	Cul-de-sac	0.114	22	1,471	1465	HMA	Turf	Rural	No	Yes	No	No	None	73			Village of Roscoe	Local		
Meadowsweet Ln	Purple Sage Dr	Lemon Grass Ln	0.182	24	2,563	2559	HMA	Turf	Rural	Yes	Yes	No	No	None	84			Village of Roscoe	Local		
Meadowsweet Ln	Roscoe Rd	Purple Sage Dr	0.687	24	9,673	9670	HMA	Aggregate	Rural	Yes	Yes	No	No	None	96	Patching in several areas		Village of Roscoe	Local	2022	
Merilot Dr	Meadowsweet Ln	Chicory Ridge Way	0.167	22	2,155	2151	HMA	Aggregate/turf	Rural	Yes	Yes	No	No	None	79			Village of Roscoe	Local		
Merino Run	Rambouillet Rdg	Cul-de-sac	0.132	22	1,704	1710	HMA	Turf	Rural	No	Yes	No	No	None	84			Village of Roscoe	Local		
Merrion Rd	Leana Dr	Lismore Rd	0.208	22	2,685	2688	HMA	Turf	Rural	Yes	Yes	No	No	None	70	Patching in several areas		Village of Roscoe	Local		80%-100% of shoulder is higher than road
Metalmark Ln	Roscoe Rd	Mosaic Ln	0.464	26	7,078	7081	HMA	None	Urban	Yes	Yes	Yes	No	None	83			Village of Roscoe	Local		
Monarch Rd	Morning Cloak St	Mosaic Ln	0.424	26	6,467	6475	HMA	None	Urban	Yes	Yes	Yes	No	None	80			Village of Roscoe	Local		
Montadale Dr	Corriedale Run	Karkul Terrace	0.068	26	1,037	1031	HMA	None	Urban	Yes	Yes	Yes	Yes	None	76			Village of Roscoe	Local		
Montadale Dr	Karkul Terrace	Romeldale Ln	0.118	26	1,800	1805	HMA	None	Urban	Yes	Yes	Yes	Yes	None	94			Village of Roscoe	Local		First 100 ft was not redone.
Morning Cloak St	Monarch Rd	Dead End	0.227	26	3,463	3460	HMA	None	Urban	Yes	Yes	Yes	No	None	78			Village of Roscoe	Local		Dead end has no turn around
Mosaic Ln	Metalmark Ln	Dead End	0.182	26	2,776	2780	HMA	None	Urban	Yes	Yes	Yes	No	None	77			Village of Roscoe	Local		Dead end has no turn around
Mulberry St	Bridge St	Grove St	0.074	22	955	953	HMA	Aggregate	Rural	Yes	Yes	No	No	None	95	Patching in several areas		Village of Roscoe	Local		
Mulberry St	Grove St	Dead End	0.058	8	272	274	Gravel	Turf	Rural	No	No	No	No	None	97			Village of Roscoe	Local		
Murphy's Run	Main St	Cul-de-sac	0.071	22	916	916	HMA	Aggregate/turf	Rural	No	No	No	No	None	98			Village of Roscoe	Local	2019	Cracks were filled
N 2nd St	McDonald Rd	Swanson Rd	0.812	22	10,480	10484	HMA	Aggregate	Rural	Yes	Yes	No	No	None	94			Village of Roscoe	Local		
N 2nd St (Main St)	McCurry Road	Township Border	0.427	24	6,012	6019	HMA	Aggregate	Rural	Partial	Yes	No	No	None	93	Patching in several areas	600	Village of Roscoe	Local		Potholes were filled
Nestlewood Dr	Cherrywood	Cul-de-sac	0.486	22	6,273	6274	HMA	Turf	Rural	No	Yes	No	No	None	75			Village of Roscoe	Local		
Night Owl Ln	Old River Rd	Hawks Pointe Trl	0.283	22	3,653	3646	HMA	Aggregate	Rural	Yes	Yes	No	No	None	81			Village of Roscoe	Local		
North St	2nd St	4th St	0.153	22	1,975	1970	Chip Seal	Turf	Rural	No	No	No	No	None	96			Village of Roscoe	Local	2019	Cracks were filled
Oak Village Dr	Andrews Dr	Andrews Dr	0.139	24	1,957	1952	HMA	None	Urban	Yes	Yes	Yes	No	None	82			Village of Roscoe	Local		
Old Towne Ct	Prairie Flower	Cul-de-sac	0.080	22	1,033	1027	HMA	Turf	Rural	No	Yes	No	No	None	72	Patching in several areas		Village of Roscoe	Local		80%-100% of the shoulder is higher than the road.
Overture Way	Dead End	Lismore Rd	0.317	22	4,091	4086	HMA	Turf	Rural	Yes	Yes	No	No	None	77			Village of Roscoe	Local		Dead end has no turn around
Oxbow Dr	Dead End	Pine Ln	0.136	22	1,755	1761	HMA	Turf	Rural	No	No	No	No	None	62	Patching in several areas		Village of Roscoe	Local		
Pappy Brown Dr	Bridge St	Grove St	0.083	22	1,071	1073	HMA	Turf	Rural	No	Yes	No	No	None	83			Village of Roscoe	Local		
Parkway Dr	Clayton Circle	Dead End	0.132	22	1,704	1703	HMA	Aggregate/turf	Rural	Yes	Yes	No	No	None	100			Village of Roscoe	Local	2025	Dead end has no turn around. Included in 2025 Residential Streets Program.
Pearl St	Grove St	Dead End	0.244	22	3,149	3146	HMA	Turf	Rural	Yes	Yes	No	No	None	71	Patching in several areas		Village of Roscoe	Local		Dead end has no turn around
Performance Dr	Willowbrook Rd (East)	Dead End	0.199	36	4,203	4193	HMA	None	Urban	Yes	Yes	Yes	No	None	80			Village of Roscoe	Local		
Performance Dr	Willowbrook Rd (West)	Dead End	0.080	37	1,737	1738	HMA	None	Urban	No	No	Yes	No	None	96			Village of Roscoe	Local		
Petry Close	McDonald Rd	Cul-de-sac	0.055	22	710	712	HMA	Aggregate	Rural	No	No	No	No	None	71			Village of Roscoe	Local		Potholes were filled, but filling is coming out.
Pine Ln	Oxbow Dr	Dead End	0.030	14	246	249	HMA	Turf	Rural	No	No	No	No	None	66			Village of Roscoe	Local		Dead end has no turn around
Pine Ln	Main St	Dead End	0.178	28	2,924	2922	HMA	Turf	Rural	Yes	No	No	No	None	69			Village of Roscoe	Local		
Pine White St	Clearwing Ln	Marblewing Rd	0.112	26	1,708	1705	HMA	None	Urban	Yes	Yes	Yes	No	None	81			Village of Roscoe	Local		
Pinesap Place	Goosedown Dr	Cul-de-sac	0.042	22	542	537	HMA	Turf	Rural	Yes	Yes	No	No	None	88			Village of Roscoe	Local		
Prairie Flower	Nestlewood Dr	Cherrywood	0.369	22	4,763	4763	HMA	Turf	Rural	No	Yes	No	No	None	75			Village of Roscoe	Local		Potholes were filled. 75% of the shoulder was higher than the road.
Prairie Flower	Cherrywood	Willowbrook Rd	0.362	25	5,309	5309	HMA	Aggregate	Rural	No	Yes	No	No	None	96			Village of Roscoe	Local		
Prairie Rose Dr	Bluestem Rd	Baneberry Dr	0.492	32	9,236	9239	HMA	None	Urban	Yes	Yes	Yes	No	None	82			Village of Roscoe	Local		
Prairie View Ct	Prairie Flower	Cul-de-sac	0.060	22	774	770	HMA	Turf	Rural	No	Yes	No	No	None	76			Village of Roscoe	Local		50% of the shoulder is higher than the road.
Prairie Wind Place	Hodges Run	Cul-de-sac	0.117	24	1,647	1653	HMA	Turf	Rural	Yes	Yes	No	No	None	100			Village of Roscoe	Local	2025	Included in 2025 Residential Streets Program.
Prairienook	Nestlewood Dr	Cul-de-sac	0.108	24	1,521	1527	HMA	Turf	Rural	No	Yes	No	No	None	81			Village of Roscoe	Local		

Street Name	From	To	Length (Mi)	Width (LF)	Area (SY) - calc	Area (SY)	Pavement Type	Shoulder Type	Urban/Rural	Sewer	Water	Storm Sewer	Sidewalks	Sidewalk Condition	PCR	Inspection Comments	ADT-2012	Jurisdiction	Functional Class	Year of Last Improvement	Notes
Presley Place	Pearl St	Franklin St	0.190	22	2,452	2458	HMA	Turf	Rural	Yes	Yes	No	No	None	79	Patching in several areas		Village of Roscoe	Local		
Promontory Trl	Rockton Rd	Cul-de-sac	0.508	26	7,749	7746	HMA	None	Urban	No	No	Yes	No	None	100	Patching in several areas		Village of Roscoe	Local	2024	Last 100 ft was not redone
Purple Sage Dr	Linden Blossom Ln	Applemint Ln	0.380	22	4,905	4913	HMA	Aggregate	Rural	Yes	Yes	No	No	None	76	Patching in several areas		Village of Roscoe	Local		
Quality Dr	Performance Dr	Supply Rd	0.078	34	1,556	1549	HMA	None	Urban	Yes	Yes	Yes	No	None	84			Village of Roscoe	Local		
Quill Dr	Brandy Bend Rd	Hawks Pointe Trl	0.207	24	2,915	2919	HMA	Turf	Rural	Yes	Yes	No	No	None	80			Village of Roscoe	Local		
Race St	Broad St	Reed Ln	0.078	18	824	819	HMA	Turf	Rural	Yes	No	No	No	None	58			Village of Roscoe	Local	2019	
Rambouillet Rdg	Southdown Ln	Sweet Grass Dr	0.816	28	13,404	13401	HMA	None	Rural	No	Yes	No	Yes	None	100			Village of Roscoe	Local	2018	Cracks had been filled
Red Rose Trl	Timber Ridge Rd	Dead end	0.273	26	4,164	4159	HMA	None	Urban	No	No	Yes	No	None	100			Village of Roscoe	Local	2024	Dead end has no turn around.
Redfield	Sawmill Dr	Cherrywood	0.186	22	2,401	2402	HMA	Aggregate/turf	Rural	No	Yes	No	No	None	69			Village of Roscoe	Local		Potholes were filled, but filling was coming out. Patching was done. 50% of shoulder is higher than road.
Reed Ln	Race St	Dead End	0.090	18	950	956	HMA	Turf	Rural	No	No	No	No	None	98	Patching in several areas		Village of Roscoe	Local	2019	Dead end has no turn around
Reimer Dr	Main St	Cul-de-sac	0.264	26	4,027	4032	HMA	Turf	Rural	Yes	Yes	No	No	None	79			Village of Roscoe	Local		
River St	Main St	Dead End (Bridge)	0.072	22	929	932	HMA	Turf	Rural	Yes	No	No	No	None	72			Village of Roscoe	Local		
River St	Dead End	Dead End (Bridge)	0.103	22	1,329	1327	HMA	Turf	Rural	Yes	Yes	No	No	None	72			Village of Roscoe	Local		
River St	Bridge St	Frankies Ln	0.217	18	2,292	2290	HMA/Chip Seal	Turf	Rural	Partial	Partial	No	No	None	88			Village of Roscoe	Local		
River View Trl	Gleasman Rd	Meadow Crossing Trl	0.434	22	5,601	5602	HMA	Turf	Rural	Yes	Yes	No	No	None	97	Patching in several areas		Village of Roscoe	Local	2018	Cracks were filled
Rockrose Ct	Rockrose Dr	Cul-de-sac	0.128	26	1,952	1960	HMA	None	Urban	Yes	Yes	Yes	No	None	76			Village of Roscoe	Local		
Rockrose Dr	Hononegah Rd	Dead End	0.140	32	2,628	2626	HMA	None	Urban	Yes	Yes	Yes	No	None	82			Village of Roscoe	Local		Dead end has no turn around
Romeldale Ln	Tall Pines Pkwy	Montadale Dr	0.080	26	1,220	1222	HMA	None	Urban	Yes	Yes	Yes	No	None	85			Village of Roscoe	Local		
Romeldale Ln	Leicester Way	Southdown Ln	0.109	26	1,663	1662	HMA	None	Urban	Yes	Yes	Yes	Yes	None	86			Village of Roscoe	Local		
Romeldale Ln	Montadale Dr	Leicester Way	0.370	26	5,644	5645	HMA	None	Urban	Yes	Yes	Yes	Yes	None	94			Village of Roscoe	Local		
Rosemare Dr	Leana Dr	Lismore Rd	0.173	22	2,233	2239	HMA	Turf	Rural	Yes	Yes	No	No	None	72			Village of Roscoe	Local		
Ross Ln	Main St	Dead End	0.103	22	1,329	1323	HMA	Turf	Rural	Yes	Yes	No	No	None	83			Village of Roscoe	Local		
Rowena Dr	Frankies Ln	Cul-de-sac	0.181	18	1,911	1915	Chip Seal	Turf	Rural	Partial	No	No	No	None	75			Village of Roscoe	Local		
Rural Edge Dr	Flatwillow Dr	Sweet Grass Dr	0.251	22	3,240	3242	HMA	Turf	Rural	No	No	No	No	None	75			Village of Roscoe	Local		
Rural Edge Dr	Main St	Flatwillow Dr	0.276	22	3,562	3568	HMA	Aggregate	Rural	No	No	No	No	None	100			Village of Roscoe	Local	2019	Cracks were filled
Saddle Club Dr	Love Rd	Equine Dr	0.139	20	1,631	1636	Chip Seal	Turf	Rural	No	No	No	No	None	80			Village of Roscoe	Local		Bad pothole in cul-de-sac. 80%-100% of shoulder is higher than road.
Sage Hen Ter	Sage Hen Trl	Cul-de-sac	0.034	22	439	433	HMA	Turf	Rural	No	No	No	No	None	77			Village of Roscoe	Local		
Sage Hen Trl	Sweet Grass Dr	McDonald Rd	0.204	22	2,633	2638	HMA	Turf	Rural	No	No	No	No	None	77			Village of Roscoe	Local		
Sagewood Dr	Cul-de-sac	Cul-de-sac	0.282	22	3,640	3639	HMA	Aggregate	Rural	No	Yes	No	No	None	69			Village of Roscoe	Local		
Santolina Dr	Meadowsweet Ln	Chicory Ridge Way	0.248	22	3,201	3206	HMA	Turf	Rural	Yes	Yes	No	No	None	71			Village of Roscoe	Local		
Sawmill Dr	Applegate Dr	Highstone Dr	0.274	22	3,536	3536	HMA	Aggregate	Rural	No	Yes	No	No	None	96			Village of Roscoe	Local	2023	
Schaumburg Ln	Joncey Dr	Roscoe Township Border	0.282	28	4,632	4630	HMA	None	Urban	Yes	Yes	Yes	Yes	None	84			Village of Roscoe	Local		
Shamrock Ln	Main St	Cul-de-sac	0.054	22	697	703	HMA	Turf	Rural	No	No	No	No	None	96			Village of Roscoe	Local	2019	
Sheringham Dr	Swanson Rd	Dead End	0.728	26	11,104	11103	HMA	None	Urban	No	No	Yes	No	None	96	Patching in several areas		Village of Roscoe	Local	2021	Dead end has no turn around
Silver Hawk Ct	Cinnabar Dr	Cul-de-sac	0.107	22	1,381	1376	HMA	Turf	Rural	No	No	No	No	None	70			Village of Roscoe	Local		
Skipperling Rd	Metalmark Ln	Dead End	0.061	26	930	924	HMA	None	Urban	Yes	Yes	Yes	No	None	81			Village of Roscoe	Local		
Smoke Tree Cir	Smoke Tree Ln	Cul-de-sac	0.089	24	1,253	1260	HMA	Aggregate/turf	Rural	No	Yes	No	No	None	72			Village of Roscoe	Local		50% of the shoulder is higher than the road.
Smoke Tree Ln	Upper Ridge Way	White Dove Rd	0.207	24	2,915	2914	HMA	Aggregate/turf	Rural	No	Yes	No	No	None	79			Village of Roscoe	Local		80%-100% of the shoulder is higher than the road.
Sorrvice Dr	Cul-de-sac	Flagler Dr	0.153	28	2,513	2508	HMA	None	Urban	Yes	Yes	Yes	No	None	87			Village of Roscoe	Local		
Southdown Ct	Southdown Ln	Cul-de-sac	0.114	22	1,471	1467	HMA	Turf	Rural	No	Yes	No	No	None	84			Village of Roscoe	Local		

Street Name	From	To	Length (Mi)	Width (LF)	Area (SY) - calc	Area (SY)	Pavement Type	Shoulder Type	Urban/Rural	Sewer	Water	Storm Sewer	Sidewalks	Sidewalk Condition	PCR	Inspection Comments	ADT-2012	Jurisdiction	Functional Class	Year of Last Improvement	Notes
Southdown Ln	Rambouillet Rdg	McDonald Rd	0.390	22	5,034	5033	HMA	Turf	Rural	No	Yes	No	No	None	83			Village of Roscoe	Local		Southside of road cracks were filled up untill Finns crossing.
Southdown Ln	Swanson Rd	Rambouillet Ridge	0.311	22	4,014	4018	HMA	Turf	Rural	Yes	Yes	No	No	None	96			Village of Roscoe	Local		Cracks had been filled
Sprague Rd	Roscoe Rd	Liddle Rd	0.768	18	8,110	7874	Chip Seal	Turf	Rural	No	Partial	No	No	None	87		125	Village of Rockton	Local		Extreme edge breaks
Starboard Dr	Cul-de-sac	Dead End	0.190	22	2,452	2455	HMA	Aggregate	Rural	No	No	No	No	None	66			Village of Roscoe	Local		Dead end has no turn around. 50% of shoulder is higher than the road.
Stern Dr	N 2nd St	Starboard Dr	0.152	25	2,229	2224	HMA	Aggregate	Rural	No	No	No	No	None	67			Village of Roscoe	Local		
Stonemint Dr	Forest Ridge Dr	River View Trl	0.109	22	1,407	1401	HMA	Turf	Rural	Yes	Yes	No	No	None	97	Patching in several areas		Village of Roscoe	Local	2018	Cracks were filled
Supply Rd	Willowbrook Rd	Quality Dr	0.054	34	1,077	1074	HMA	None	Urban	Yes	Yes	Yes	No	None	77			Village of Roscoe	Local		Potholes were filled
Sutter Dr	Applegate Dr	Cherrywood	0.330	22	4,259	4255	HMA	Aggregate/turf	Rural	No	Yes	No	No	None	69			Village of Roscoe	Local		Patching was done. 50% of the shoulder is higher than the road.
Swanson Ct	Swanson Dr	Cul-de-sac	0.178	23	2,402	2396	HMA	Turf	Rural	Yes	Yes	No	No	None	74			Village of Roscoe	Local		
Swanson Dr	Swanson Ct	Erickson Dr	0.149	32	2,797	2788	HMA	Aggregate/turf	Rural	Partial	No	No	No	None	83			Village of Roscoe	Local		
Swanson Dr	Erickson Dr	Mahogany Ln	0.164	32	3,079	3081	HMA	None	Urban	Yes	Yes	Yes	No	None	85			Village of Roscoe	Local		
Swanson Dr	Mahogany Ln	Village Limits	0.152	32	2,854	2851	HMA	None	Urban	Yes	Yes	Yes	No	None	95			Village of Roscoe	Local		
Sweet Grass Dr	Rural Edge Dr	Rambouillet Rdg	0.210	24	2,957	2962	HMA	Aggregate/turf	Rural	No	No	No	No	None	65			Village of Roscoe	Local		
Talentina Trl	Bergamot Way	Lemon Grass Dr	0.153	22	1,975	1969	HMA	Aggregate	Rural	Yes	Yes	No	No	None	77			Village of Roscoe	Local		
Tall Pines Pkwy	N 2nd St	Cul-de-sac	0.315	26	4,805	4809	HMA	None	Urban	Yes	Yes	Yes	No	None	82			Village of Roscoe	Local		
Tansy Ct	Lemon Grass Ln	Cul-de-sac	0.082	22	1,058	1058	HMA	Turf	Rural	Yes	Yes	No	No	None	85			Village of Roscoe	Local		
Targee Ct	Targee Trl	Cul-de-sac	0.062	22	800	805	HMA	Turf	Rural	No	Yes	No	No	None	84			Village of Roscoe	Local		
Targee Trl	Rambouillet Rdg	McDonald Rd	0.276	22	3,562	3562	HMA	Turf	Rural	No	Yes	No	No	None	85			Village of Roscoe	Local	2018	
Targee Trl	Corriedale Run	Rambouillet Rdg	0.078	22	1,007	1003	HMA	Turf	Rural	No	Yes	No	No	None	100			Village of Roscoe	Local	2018	Last 100 ft was not redone
Teaberry Ct	River View Trl	Cul-de-sac	0.028	24	394	397	HMA	Turf	Rural	Yes	Yes	No	No	None	97	Patching in several areas		Village of Roscoe	Local	2018	Cracks were filled
Ter Maat Ct	Andrews Dr	Andrews Dr	0.103	22	1,329	1325	HMA	Turf	Rural	Yes	Yes	No	No	None	100			Village of Roscoe	Local	2025	Included in 2025 Residential Streets Program.
Terragon Ct	Chicory Rdige Way	Cul-de-sac	0.036	22	465	461	HMA	Aggregate	Rural	Yes	Yes	No	No	None	89			Village of Roscoe	Local		
Thickett Trl	Old River Rd	Woodchuck Trl	0.135	24	1,901	1896	HMA	Turf	Rural	Yes	Yes	No	No	None	74			Village of Roscoe	Local		Patching was done
Thompson Dr	Pearl St	Bridge St	0.204	20	2,394	2392	HMA	Turf	Rural	Yes	Yes	No	No	None	85			Village of Roscoe	Local		
Thribble Cross	Romeldale Ln	Corriedale Run	0.236	26	3,600	3594	HMA	None	Urban	Yes	Yes	Yes	Yes	None	84			Village of Roscoe	Local		
Timber Ridge Road	Promontory Trl	Cul-de-sac	0.248	26	3,783	3783	HMA	None	Urban	No	No	Yes	No	None	100	Patching in several areas		Village of Roscoe	Local	2024	
Tumeric Circle	Chicory Rdige Way	Cul-de-sac	0.038	22	490	495	HMA	Turf	Rural	Yes	Yes	No	No	None	76			Village of Roscoe	Local		
Tunbridge Ct	Sheringham Dr	Cul-de-sac	0.122	26	1,861	1858	HMA	None	Urban	No	No	Yes	No	None	96			Village of Roscoe	Local	2021	
Twin Deer Run	Applegate Dr	Edgefield	0.491	22	6,337	6334	HMA	Turf	Rural	No	Yes	No	No	None	70			Village of Roscoe	Local		Potholes were filled.
Upper Ridge Way	McDonald Rd	Applegate Dr	0.504	24	7,096	7090	HMA	Aggregate	Rural	No	Yes	No	No	None	100			Village of Roscoe	Local	2023	
Valerian Way	Bergamot Way	Linden Blissom Ln	0.390	22	5,034	5034	HMA	Turf	Rural	Yes	Yes	No	No	None	71			Village of Roscoe	Local		
Verbena St	Meadowsweet Ln	Chicory Ridge Way	0.255	22	3,291	3285	HMA	Aggregate/turf	Rural	Yes	Yes	No	No	None	78			Village of Roscoe	Local		
Wainwright Ct	Rambouillet Rdg	Cul-de-sac	0.035	28	575	570	HMA	None	Urban	Yes	Yes	Yes	Yes	None	81			Village of Roscoe	Local		
Wallace Dr	Main St	Dead End	0.142	20	1,666	1660	HMA	Turf	Rural	Yes	Yes	No	No	None	83			Village of Roscoe	Local		Dead end has no turn around
White Dove Rd	Smoke Tree Ln	Applegate Dr	0.204	24	2,872	2869	HMA	Turf	Rural	No	Yes	No	No	None	78	Patching in several areas		Village of Roscoe	Local		
Wildwood Walk	Red Rose Trl	Cul-de-sac	0.040	20	469	466	HMA	None	Urban	No	No	Yes	No	None	100			Village of Roscoe	Local	2024	
Williams Dr	Main St	Oxbow Dr	0.304	22	3,924	3928	HMA	Turf	Rural	No	Yes	No	No	None	79			Village of Roscoe	Local		
Willobrook Rd	Elevator Road	McCurry Road	1.003	24	14,122	14128	HMA	Aggregate	Rural	Partial	Partial	No	No	None	96		2850	Village of Roscoe	Minor Arterial		Cracks were filled
Willowbrook Rd	Rockton Road	South Beloit Border	0.480	40	11,264	11253	HMA/PCC	Aggregate	Rural	Partial	Yes	No	No	None	88		4500	Village of Roscoe	Minor Arterial		
Willowbrook Rd	McCurry Road	Rockton Road	1.003	40	23,537	23530	HMA/PCC	Aggregate	Rural	Partial	Yes	No	No	None	88		4500	Roscoe Township	Minor Arterial		

Street Name	From	To	Length (Mi)	Width (LF)	Area (SY) - calc	Area (SY)	Pavement Type	Shoulder Type	Urban/Rural	Sewer	Water	Storm Sewer	Sidewalks	Sidewalk Condition	PCR	Inspection Comments	ADT-2012	Jurisdiction	Functional Class	Year of Last Improvement	Notes
Wind Flower Ln	McDonald Rd	Cul-de-sac	0.283	18	2,988	2987	HMA	Turf	Rural	No	No	No	No	None	58	Patching in several areas		Village of Roscoe	Local		
Winding Way	Red Rose Trl	Cul-de-sac	0.167	20	1,959	1956	HMA	None	Urban	No	No	Yes	No	None	100			Village of Roscoe	Local	2024	
Winterfield Ln	Prairie Flower	Twin Deer Run	0.180	22	2,323	2326	HMA	Turf	Rural	No	Yes	No	No	None	77			Village of Roscoe	Local		Potholes were filled.
Woodbury Ridge Dr	McCurry Road	Woodcrest Ln	0.102	26	1,556	1561	HMA	None	Urban	Yes	Yes	Yes	Yes	None	86			Village of Roscoe	Local		
Woodchuck Trl	Brandy Bend Rd	Dead End	0.075	22	968	972	HMA	Turf	Rural	Yes	Yes	No	No	None	79			Village of Roscoe	Local		Dead end has no turn around. 50% of shoulder is higher than road.
Woodcliff Ln	Woodbury Ridge Dr	Cul-de-sac	0.269	26	4,103	4107	HMA	None	Urban	Yes	Yes	Yes	Yes	None	86			Village of Roscoe	Local		
Woodcrest Ln	Woodcliff Ln	Woodbury Ridge Dr	0.201	26	3,066	3064	HMA	None	Urban	Yes	Yes	Yes	Yes	None	86			Village of Roscoe	Local		

Legend
Maintenace year based on \$500,000/year budget
Year 1
Year 2
Year 3
Year 4
Year 5



## **Appendix E**

### **PCR Form Example**

# Pavement Rating Form

Segment No. 1 Street Goosedown Dr Cnty \_\_\_\_\_  
 From Fawn Prairie Dr To Hawks Pointe Trl  
 Pavement Surface Type HMA Width 24 Length \_\_\_\_\_ Date 06-03-2025

Riding Condition Rating (At Posted Speed)					Severity of Distress			Density of Distress % Extent of Occurrence			Multiplier	Sum of Severity and Density	Comments
0 Excellent	1 Good	2 Fair	3 Poor	4 Very Poor	Slight	Moderate	Severe	Intermittent	Frequent	Extensive			
Smooth and Pleasant	Comfortable	Uncomfortable	Rough & Very Bumpy	Dangerous at Posted Speed									
Pavement Distress Manifestation					1	2	3	<20 1	20-50 2	>50 3			
Surface Defect	Revelling/Loss of Cover Aggregate				1								
	Flushing/Streaking				2								
	Potholes				3								
	Pavement Edge Break				4								
Surface Deformation	Rippling and Shoving				6								
	Wheel Track Rutting				7								
	Distortion				8								
	Utility Trenches				9								
Cracking	Longitudinal				10		2			3		5	
	Transverse				11		2		2	3		4	
	Pavement Edge				12		2			3		3	
	Map				13								
	Alligator				14		2			3		5	
Ride Condition Rating (RCR)												1	
											Sum of Defects	20	

Pavement Condition Rating (PCR) =  $100 - \text{Sum of Defects}$

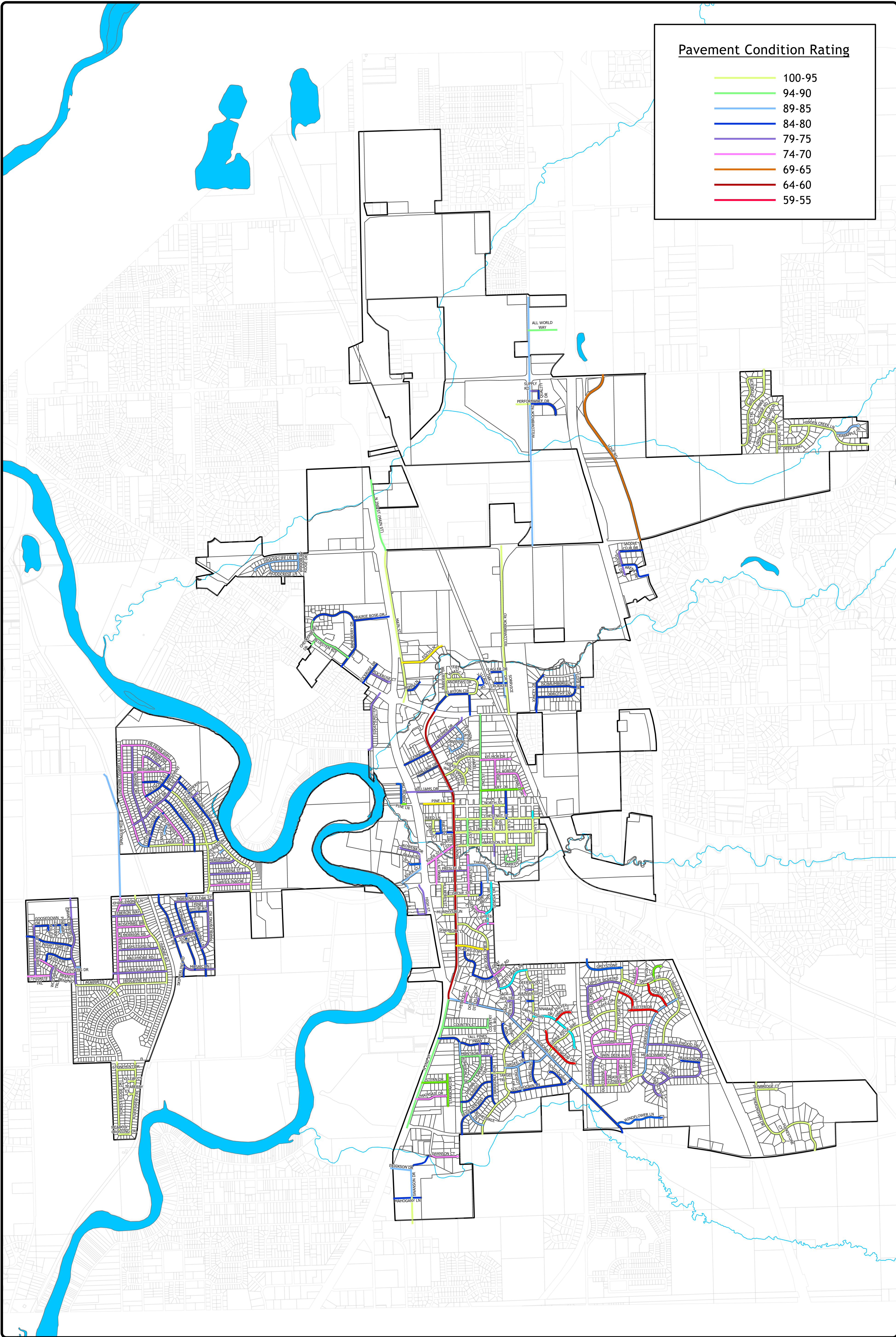
Pavement Condition Rating (PCR) 80

## Exhibits

# **Exhibit A**

## **Pavement Condition Ratings**







**Exhibit B**

**Five Year Maintenance Plan**



Maintenance Year			
6th St	1	Leana Dr	3
Edith Ln	1	Twin Deer Run	3
Flatwillow Dr	1	Windflower Ln	3
Flint Ct	1	Ada Dr	4
Frankies Ln	1	Greystone	4
Fry Dr	1	Mainsail Dr	4
Pine Ln	1	Pearl St	4
Starboard Dr	1	Petry Close	4
Stern Dr	1	Santolina Dr	4
Sweet Grass Dr	1	Valerian Way	4
Bergamot Way	2	Clay Ct	5
Merrion Rd	2	Coyote Trl	5
Pine Ln	2	Donald Dr	5
Race St	2	Lemon Grass Ln	5
Redfield	2	Old Towne Ct	5
Sagewood Dr	2	Oxbow Dr	5
Silver Hawk Ct	2	River St	5
Sutter Dr	2	River St	5
3rd St	3	Rosemare Dr	5
Gray Eagle Rd	3	Smoke Tree Cir	5

Street Maintenance Schedule

Year 1

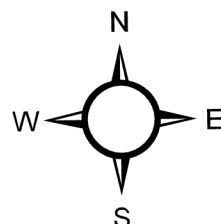
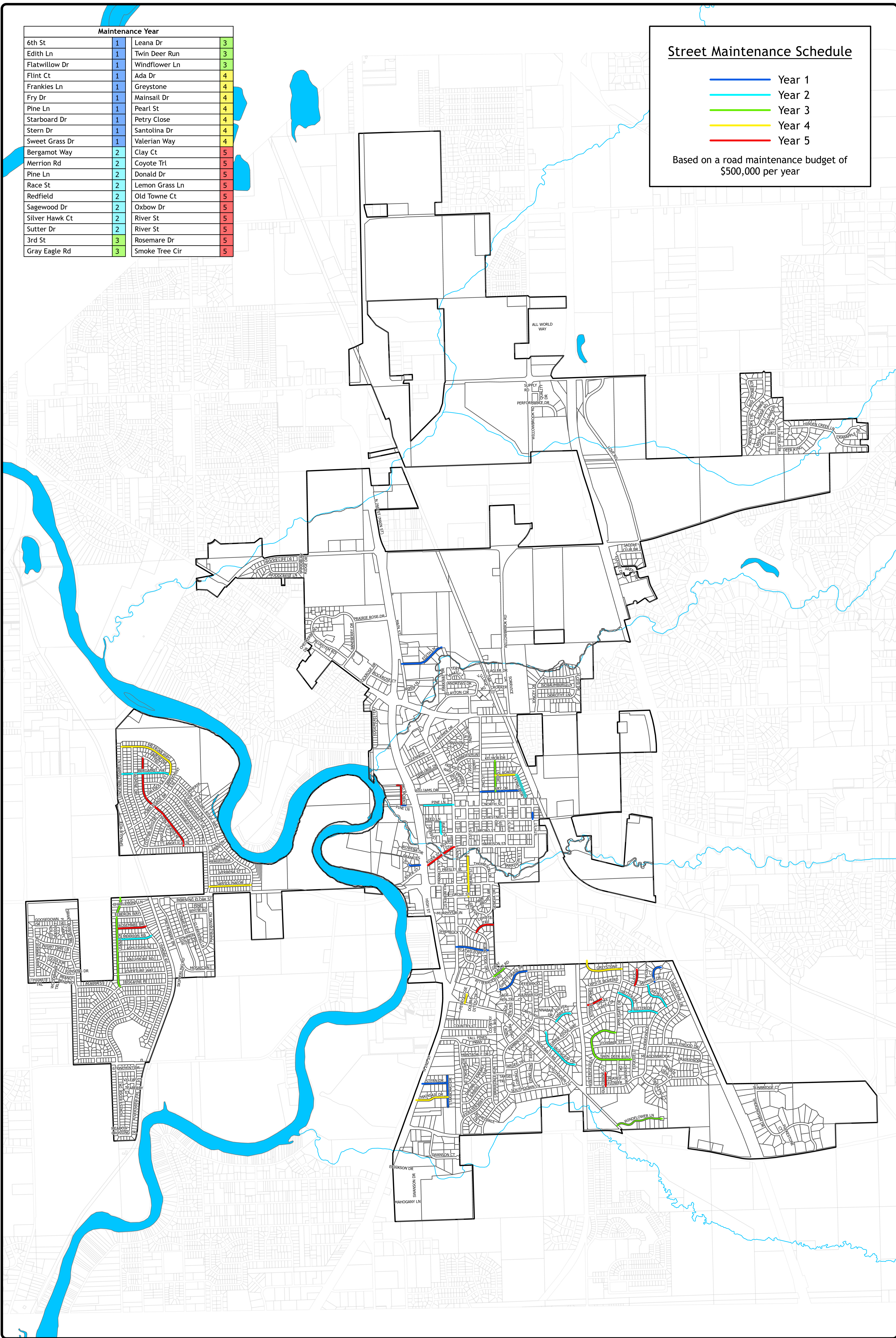
Year 2

Year 3

Year 4

Year 5

Based on a road maintenance budget of \$500,000 per year





Maintenance Year					
Cinnabar Dr	1	Edgefield	3	Brandy Bend Rd	4
Greystone	1	Coyote Trl	3	Thickett Trl	4
Windflower Ln	1	Donald Dr	3	Linden Blossom Ln	4
Starboard Dr	1	3rd St	3	Jasmine Dr	4
Geneva Dr	1	River St	3	Rural Edge Dr	5
Sweet Grass Dr	1	Franklin St	3	Sage Hen Trl	5
Race St	1	Pearl St	3	Sage Hen Trl	5
Frankies Ln	1	Rosemare Dr	3	Supply Rd	5
Flint Ct	1	Ada Dr	3	Montadale Dr	5
6th St	1	Old Towne Ct	3	Deerwood Ct	5
Pine Ln	1	Mainsail Dr	3	Talentina Trl	5
Love Rd	1	Santolina Dr	3	Rockrose Ct	5
Oxbow Dr	1	Clay Ct	3	Cartwright Ct	5
Sagewood Dr	2	Smoke Tree Cir	3	3rd St	5
Sutter Dr	2	River St	3	Ashleigh Ln	5
Twin Deer Run	2	Petry Close	3	Crescent Ct	5
Flatwillow Dr	2	Lemon Grass Ln	3	Prairie View Ct	5
Fry Dr	2	Valerian Way	3	Fawn Prairie Dr	5
Edith Ln	2	Foxdale St	4	Elberon Way	5
Redfield	2	Nestlewood Dr	4	Overture Way	5
Gray Eagle Rd	2	Prairie Flower	4	Mosaic Ln	5
Pine Ln	2	Kelmor Dr	4	Marblewing Rd	5
Merrion Rd	2	Rowena Dr	4	Common Rose St	5
Stern Dr	2	Double Ditch Cir	4	Purple Sage Dr	5
Silver Hawk Ct	2	Densmore Dr	4	Turmeric Cir	5
Leana Dr	2	Geneva Ct	4		
Bergamot Way	2	Meadowbrook	4		

Street Maintenance Schedule

Year 1

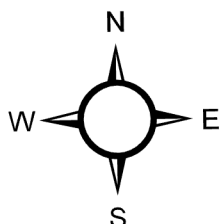
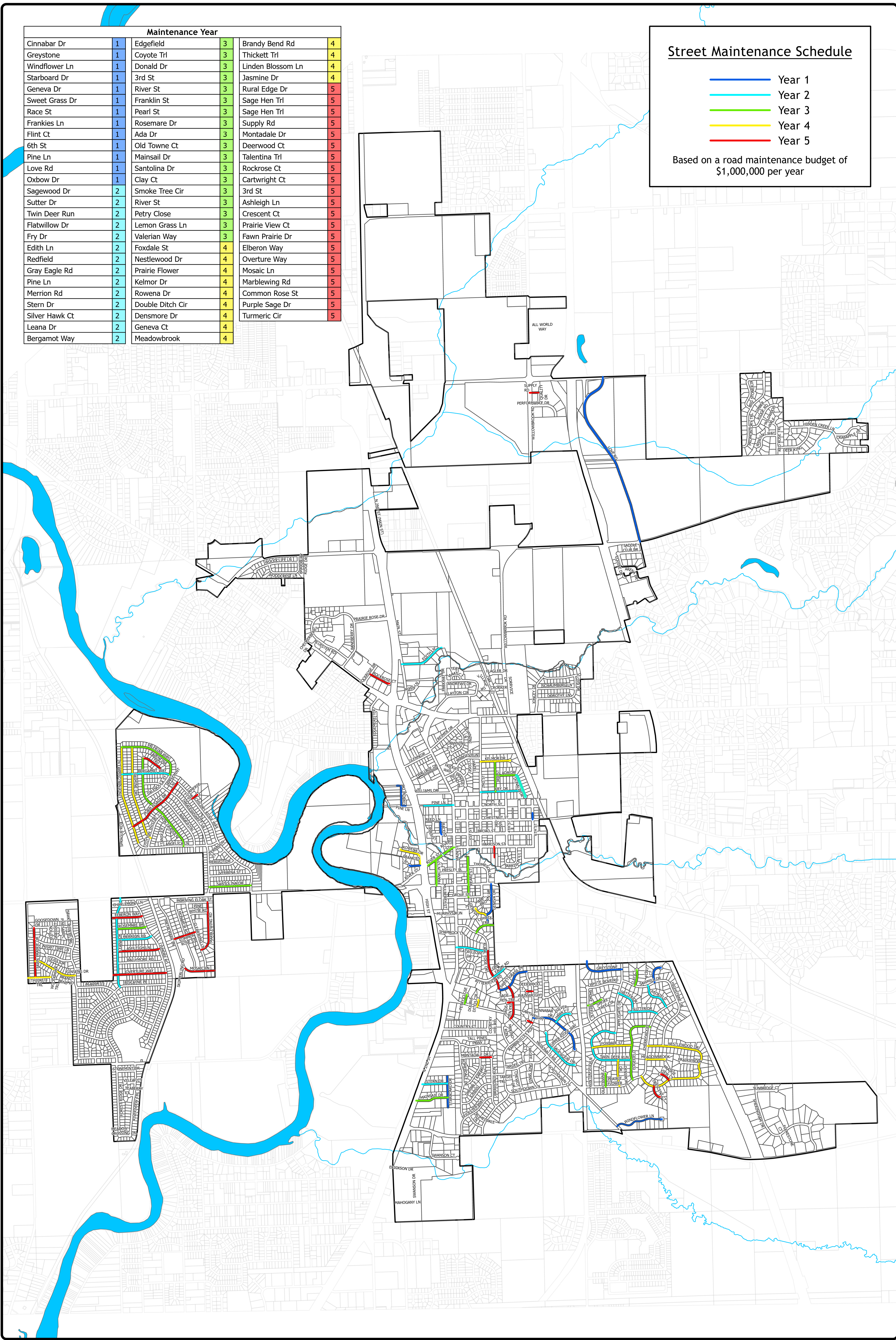
Year 2

Year 3

Year 4

Year 5

Based on a road maintenance budget of \$1,000,000 per year





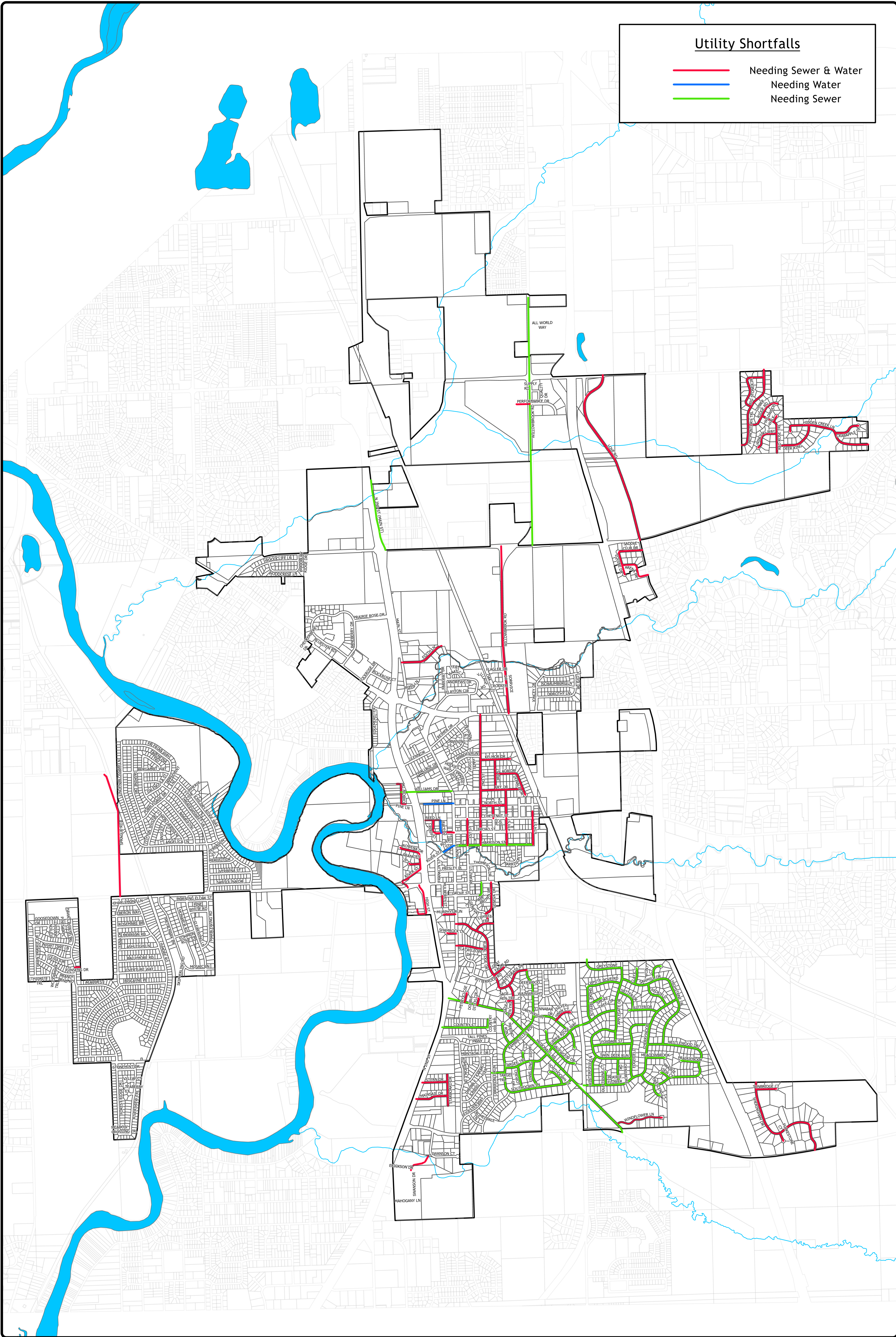




## **Exhibit C**

### **Water and Sewer Availability**





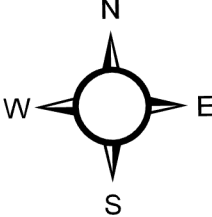
Utility Shortfalls

- Needing Sewer & Water
- Needing Water
- Needing Sewer

Water and Sewer Availability  
Village of Roscoe, Illinois

JOB NUMBER: 25-793

0.4 0.2 0 0.4 MILES





**FEHR GRAHAM**

ENGINEERING & ENVIRONMENTAL

[fehrgraham.com](https://fehrgraham.com)

