

ROLLINGWOOD DRIVE

Plant List

Key	Common Name	Botanical Name	Size	Height	Spread	Remarks	O.C.	Qty.
ABN	American Beechberry	<i>Castanea americana</i>	5 gal	24'-28"	20'-24"		42'	4
AGA	Agave	<i>Mahonia trifoliolata</i>	10 gal	30'-36"	30'-36"		42'	24
BMF	Blue Mistleflower	<i>Eupatorium coelestem</i>	1 gal	10'-12"	8"		24"	16
BUR	Bur Oak	<i>Quercus macrocarpa</i>	300 gal	14'-15'	7'-8'	8' cal. s&f full sym canopy	/	3
CHQ	Chinquapin Oak	<i>Quercus muhlenbergii</i>	300 gal	14'-15'	7'-8'	8' cal. s&f full sym canopy	/	3
CRV	Tangerine Beauty Crossvine	<i>Bignonia capitata</i> 'Tangerine Beauty'	5 gal	30'	8'	attach to fence	/	7
DNL	Palma Desert Willow	<i>Chiosma deserti</i> 'Palma'	24" tree	6'-2"	3'-4"	multi-trunk	/	1
FLA	Flame Acanthus	<i>Arisaema quadrifidum</i> var. <i>virgata</i>	1 gal	12'-15'	10'-12"		36"	24
FRO	Frogfoot	<i>Phyla nodiflora</i>	1 gal	1'-2"	8"		30"	14
GAU	Butterfly Gaura	<i>Diervilla litoralis</i>	1 gal	10'-12"	8"	white flowering	24"	11
GCM	Gulf Coast Muley	<i>Muhlenbergia capillaris</i>	1 gal	10'-12"	8"		36"	22
GGA	Green Globe Agave	<i>Agave sp. Green Globe</i>	10 gal	15'-18"	12'-16"	ball & symmetrical	/	7
GYU	Yucca Yucca	<i>Yucca sp. Yucca</i>	10 gal	15'-18"	12'-16"	ball & symmetrical	4' min	13
HCS	Heavenly Cloud Sage	<i>Leucophyllum sp. Heavenly Cloud</i>	5 gal	18'-24"	18'-24"		48"	4
INL	Inland Sea Oats	<i>Chamathum setosum</i>	1 gal	12'-15'	8"		24"	85
KID	Texas Kidneywood	<i>Erytharitia texana</i>	5 gal	30'-36"	12'-15'		/	8
LBS	Lutea Bluestem	<i>Schizanthus scoparium</i>	1 gal	15'-18"	8"		30"	19
LMG	Ludlow's Muhlenberg	<i>Muhlenbergia ludlowi</i>	1 gal	10'-12"	8"		42"	26
MHO	Mexican Hornsuckle	<i>Lonicera spicata</i>	1 gal	10'-12"	8"		30"	24
MPL	Mexican Plum	<i>Prunus mexicana</i>	30 gal	30'-42"	30'-36"	4" caliper	/	1
MTL	Texas Mountain Laurel	<i>Sophora secundiflora</i>	30 gal	3'-4"	24'-30"	multi-trunk	/	18
MTR	Montgomery Oak	<i>Quercus polymorpha</i>	300 gal	14'-15'	7'-8'	8' cal. s&f full sym canopy	/	3
PAV	Rock Rose	<i>Parsonsia lasiocarpa</i>	1 gal	12'-15'	10'-12"	ball	36"	15
PN	Pine Mistle	<i>Muhlenbergia glabra</i>	1 gal	10'-12"	8"		42"	39
PTL	Purple Trailing Lantana	<i>Lantana montevidensis</i>	1 gal	3'-4"	5'-6"		30"	18
REB	Texas Redbud	<i>Cercis canadensis</i> var. <i>texensis</i>	30 gal	30'-42"	30'-36"	4" caliper	/	2
RBV	Rusty Blackhaw Viburnum	<i>Viburnum rufidulum</i>	30 gal	5'-6"	30'-36"	4" total cal., multi-trunk	/	3
RLD	Roughleaf Dogwood	<i>Cornus drummondii</i>	30 gal	5'-6"	30'-36"	4" total cal., multi-trunk	/	7
RYU	Red Yucca	<i>Hesperaloe parviflora</i>	10 gal	18'-24"	18'-24"		42"	26
SAR	San Antonio Rose Sage	<i>Leucophyllum sp. San Antonio Rose</i>	5 gal	18'-24"	18'-18"		48"	4
SLG	Silabovleaf Goldeneye	<i>Viguiera stenolepis</i>	5 gal	18'-24"	18'-24"		30"	16
SPP	Sonolens Prickly Pear	<i>Opuntia sp.</i>	5 gal	12'-15'	12'-15'		/	15
TPE	Texas Persimmon	<i>Diospyros texana</i>	30 gal	5'-6"	30'-36"	4" total cal., multi-trunk	/	3
TUC	Big Momma/Turk's Cap	<i>Malvastrum drummondii</i> 'Big Momma'	1 gal	12'-14"	5'-6"		36"	17
WFM	White Mistleflower	<i>Eupatorium texanense</i>	5 gal	18'-24"	18'-24"		36"	9
WST	Waxy Clematis	<i>Clematis texensis</i>	1 gal	4'-6"	4'-6"		30"	25
YAU	Yucca of Houston Yucca	<i>Yucca umbellata</i> 'Yucca of Houston'	30 gal	5'-6"	30'-36"	4" total cal., multi-trunk	48"	26
ZEX	Orange Zinnia	<i>Zinnia mexicana</i>	1 gal	8'-10"	8'-10"		24"	24

Landscape Notes

Familiarization with Jobsite: Landscape contractor should thoroughly familiarize themselves with the working area as it relates to the Construction Documents prior to the commencement of any construction activity and notify the Landscape Architect where discrepancies are encountered. Contractor to verify the location of underground utilities prior to any excavation. Landscape contractor to be responsible for repairing any damage to existing hardscape, underground electrical and existing irrigation to remain.

Protection of Existing Vegetation: Existing trees scheduled to remain should be protected from injury or damage to roots, trunks, or branches by placing tree protection fencing in areas shown on plan. Damaged trees or vegetation to be repaired immediately in a manner acceptable to the Landscape Architect. Immediately damaged trees or shrubs must be replaced with ones of similar size and shape at the expense of the Contractor. A value to be determined in accordance with the tree evaluation formula as described in "A Guide to the Professional Evaluation of Landscape Trees, Specimen Shrubs and Evergreens", published by the International Society of Arboriculture.

Treatment of Existing Weeds: Existing stands of bermudagrass, johnsongrass, nutgrass, and noxious weeds to be treated with herbicide before construction begins. Nutgrass to be treated with "Image" or "Manago". Other weeds to be treated with "Fluaz" or "Boutique" or equal herbicide. Use care not to overapply onto existing vegetation to remain. Treatment shall be in strict accordance with manufacturer's specifications and shall be accomplished to allow sufficient time for a complete kill prior to starting any soil preparation.

Grading and Earthwork: Contractor to ensure positive drainage. Planting mix to be added to fill any depression that may not exceed 2" depth. Planting mix to be added to all planting areas that has less than 6" of existing soil in order to achieve a 6" minimum soil profile after soil settlement. Minimize the addition of planting mix under drip line of existing trees. Final grading to be approved by Landscape Architect.

Decomposed Granite Area: Granite path to receive a 3 1/2" layer of decomposed granite after compaction. Granite to be wetted and compacted with a plate compactor to achieve a smooth and even surface free from undulations.

Planting Mix: Planting mix to be "Thunder Dirt" as applied by Geo Growers, 12002-B Hwy 290 West, Austin TX 78737 (512) 892-2722. Planting mix substitutions to be approved by Landscape Architect prior to delivery to site.

Plant Material: Plants shall be healthy, vigorous, bushy, well-branched, unbroken, of normal habit of growth for the species, and shall be free from disease, insects, larvae and injury. All plant material shall be specimen quality from the best available sources, equal to or exceeding the measurements specified on the plant list. Contact Landscape Architect for possible plant sources. Landscape Architect may reject any plant material not meeting the minimum requirements. Any plant substitutions must be approved by Landscape Architect. Landscape Contractor to warrant plant material to remain alive and in vigorous condition for a period of one (1) year after completion and acceptance of entire project. Replace, in accordance with the plans and specifications, all plants that are dead or, as determined by Landscape Architect, are in an unhealthy or unsightly condition, and have lost their natural shape due to dead branches, or other causes due to the Contractor's negligence. The cost of such replacement(s) is at the Contractor's expense. Warrant all replacement plants for one year after installation.

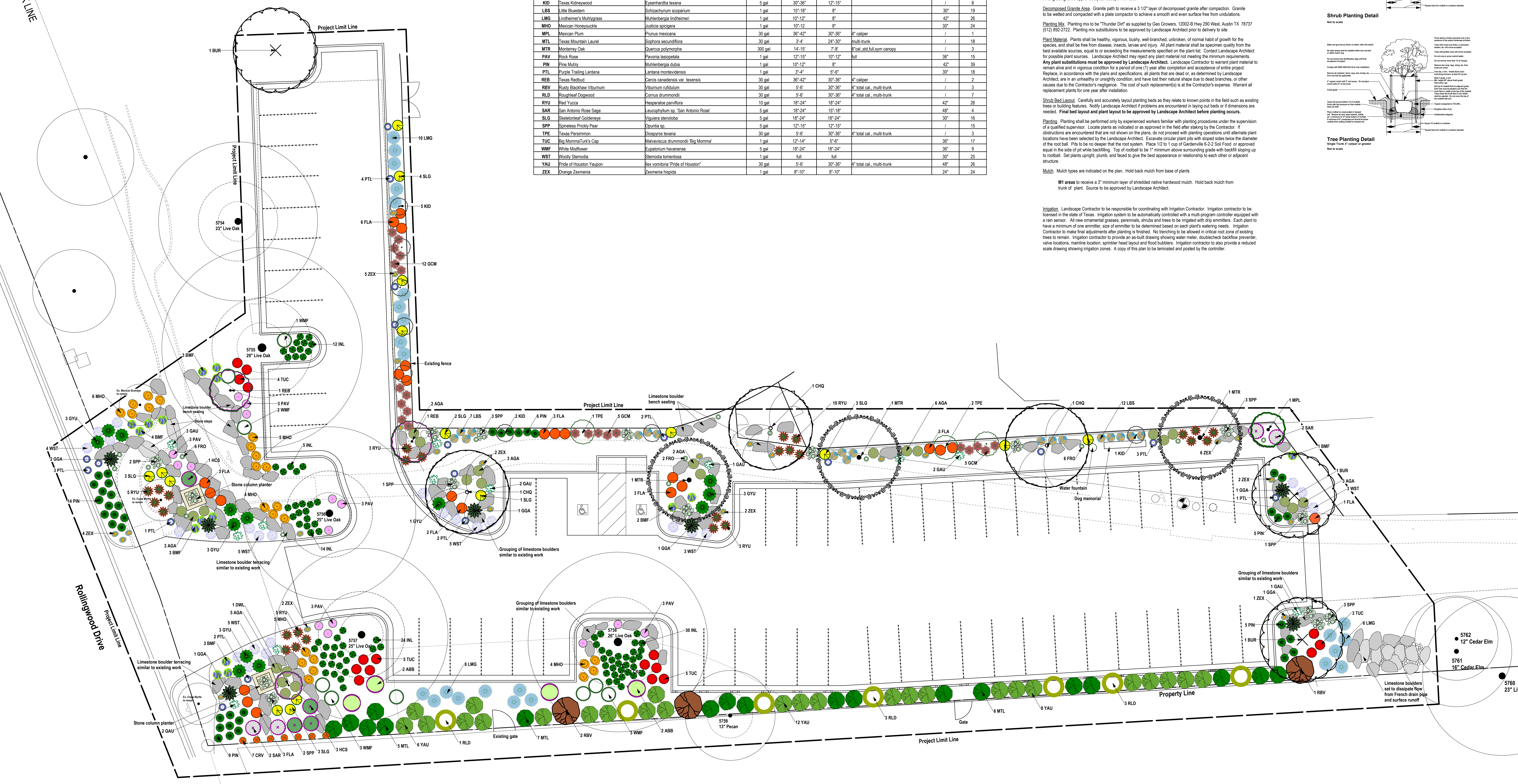
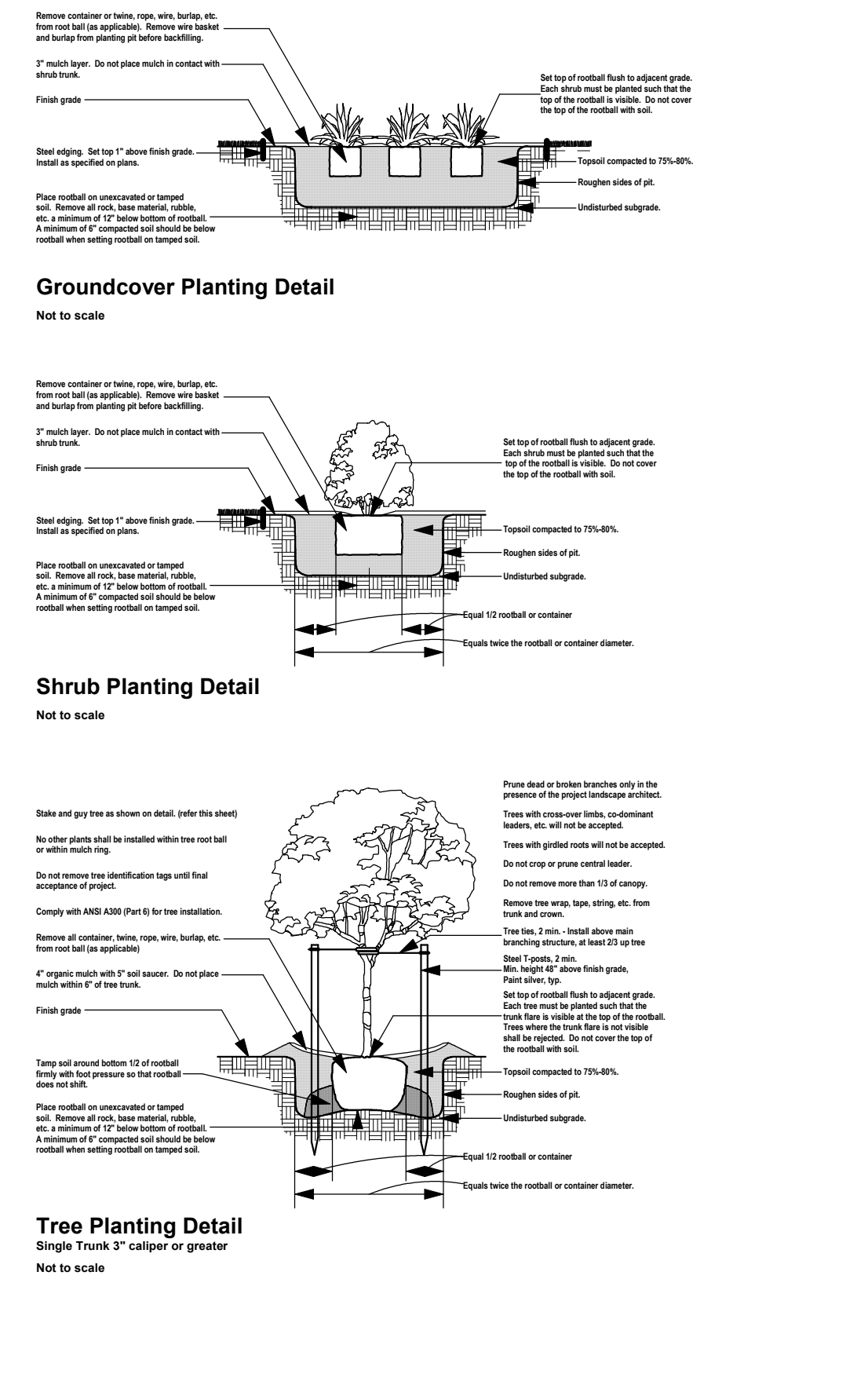
Shrub Bed Layout: Carefully and accurately layout planting beds as they relate to known points in the field such as existing trees or building features. Notify Landscape Architect if problems are encountered in laying out beds or if dimensions are needed. Final bed layout and plant layout to be approved by Landscape Architect before planting occurs.

Planting: Planting shall be performed only by experienced workers familiar with planting procedures under the supervision of a qualified supervisor. Locate plants as indicated or as approved in the field after staking by the Contractor. If obstructions are encountered that are not shown on the plans, do not proceed with planting operations until alternate plant locations have been selected by the Landscape Architect. Excavate circular plant pits with sloped sides twice the diameter of the root ball. Pits to be no deeper than the root system. Place 1/2 to 1 cup of Gardenville 6-2-2 Soil Food or approved equal in the soil of white backfilling. Top of rootball to be 1" minimum above surrounding grade with backfill sloping up to rootball. Set plants upright, plants, and loose to give the best appearance or relationship to each other or adjacent structure.

Mulch: Mulch types are indicated on the plan. Hold back mulch from base of plants.

M1 areas: M1 areas to receive a 3" minimum layer of shaded native hardwood mulch. Hold back mulch from trunk of plant. Source to be approved by Landscape Architect.

Irrigation: Landscape Contractor to be responsible for coordinating with Irrigation Contractor. Irrigation contractor to be licensed in the state of Texas. Irrigation system to be automatically controlled with a multi-program controller equipped with a rain sensor. All new ornamental grasses, perennials, shrubs and trees to be irrigated with drip emitters. Each plant to have a minimum of one emitter, size of emitter to be determined based on each plant's watering needs. Irrigation Contractor to make final adjustments after planting is finished. No trenching to be allowed in critical root zone of existing trees to remain. Irrigation contractor to provide an as-built drawing showing water meter, doublecheck backflow preventer, valve locations, mainline location, sprinkler head layout and flood bubbles. Irrigation contractor to also provide a reduced scale drawing showing irrigation zones. A copy of this plan to be laminated and posted by the contractor.



Landscape Development Plan for the
Rollingwood Park
 Rollingwood Drive, Rollingwood, TX 78746

ProgressSet
 Not For Construction

Date: 4/09/2026
 Revised:

Planting Plan
 Scale 1" = 10'-0"

