

**Dog Park Option 5**  
 Upper and Lower Areas Combined Fencing -  
 .4 and .2 Acres

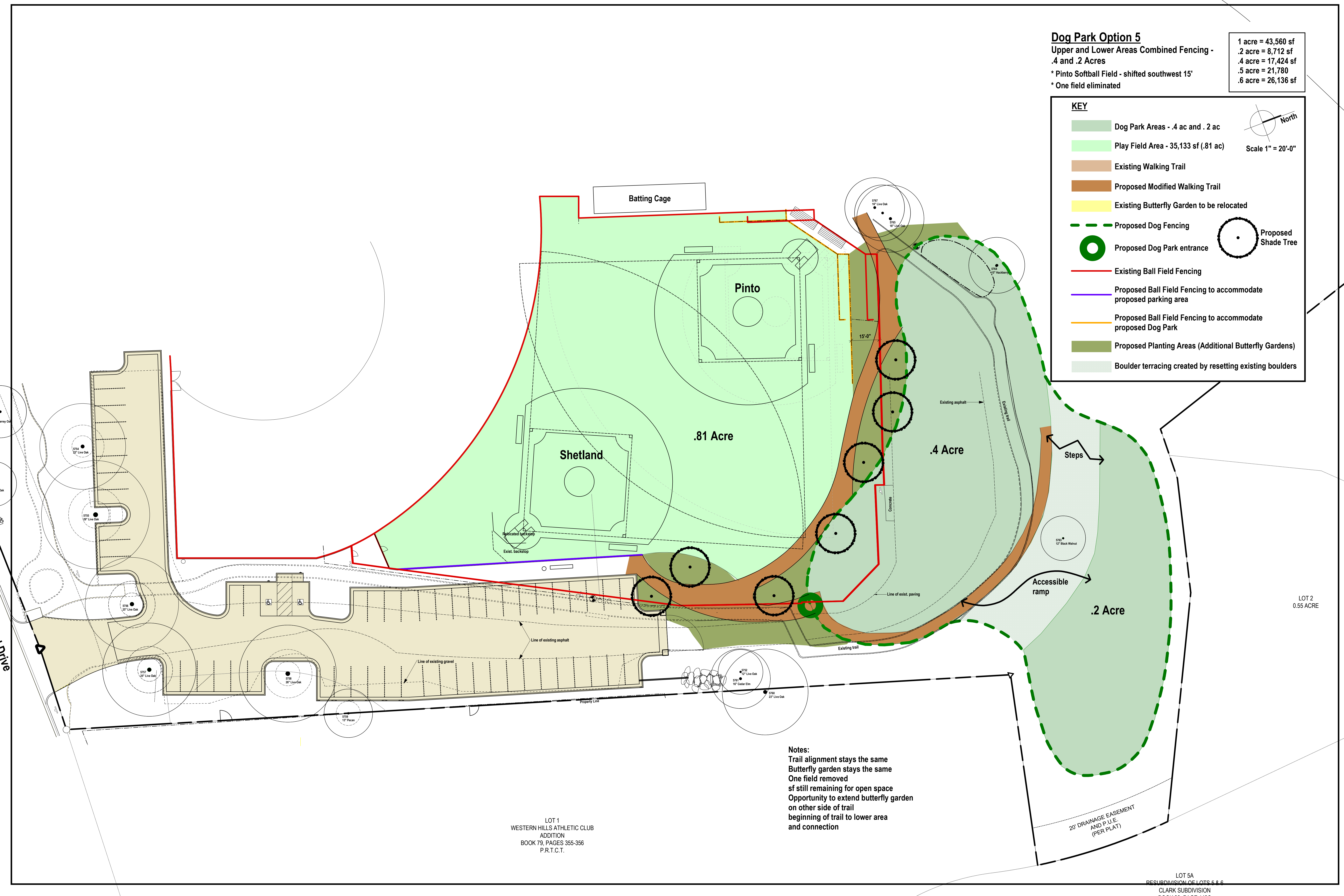
\* Pinto Softball Field - shifted southwest 15'  
 \* One field eliminated

1 acre	= 43,560 sf
.2 acre	= 8,712 sf
.4 acre	= 17,424 sf
.5 acre	= 21,780 sf
.6 acre	= 26,136 sf

**KEY**

- Dog Park Areas - .4 ac and .2 ac
- Play Field Area - 35,133 sf (.81 ac)
- Existing Walking Trail
- Proposed Modified Walking Trail
- Existing Butterfly Garden to be relocated
- Proposed Dog Fencing
- Proposed Dog Park entrance
- Existing Ball Field Fencing
- Proposed Ball Field Fencing to accommodate proposed parking area
- Proposed Ball Field Fencing to accommodate proposed Dog Park
- Proposed Planting Areas (Additional Butterfly Gardens)
- Boulder terracing created by resetting existing boulders

North  
Scale 1" = 20'-0"



**Notes:**  
 Trail alignment stays the same  
 Butterfly garden stays the same  
 One field removed  
 sf still remaining for open space  
 Opportunity to extend butterfly garden  
 on other side of trail  
 beginning of trail to lower area  
 and connection

LOT 1  
 WESTERN HILLS ATHLETIC CLUB  
 ADDITION  
 BOOK 79, PAGES 355-356  
 P.R.T.C.T.

LOT 5A  
 RESUBDIVISION OF LOTS 5 & 6  
 CLARK SUBDIVISION