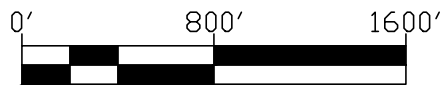


THE CITY OF ROLLINGWOOD SEWER MANHOLE REFERENCE NETWORK SURVEY

REFERENCE POINTS LOCATION MAP

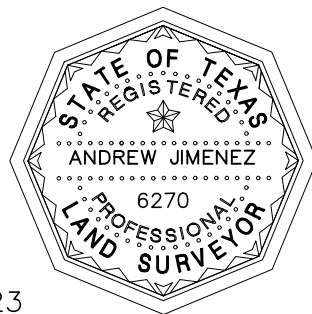
ATS Job #231011016s



Graphic Scale: 1" = 800'

LEGEND

●	1/2" IRON ROD FOUND CAPPED
Ⓢ	SANITARY SEWER MANHOLE
Ⓣ	STORM DRAIN MANHOLE
- · - · -	APPOXIMATE CITY LIMIT LINE



Andrew Jimenez
ANDREW JIMENEZ

11/14/2023

Date

Registered Professional Land Surveyor

No. 6270 - State of Texas

Client: City of Rollingwood

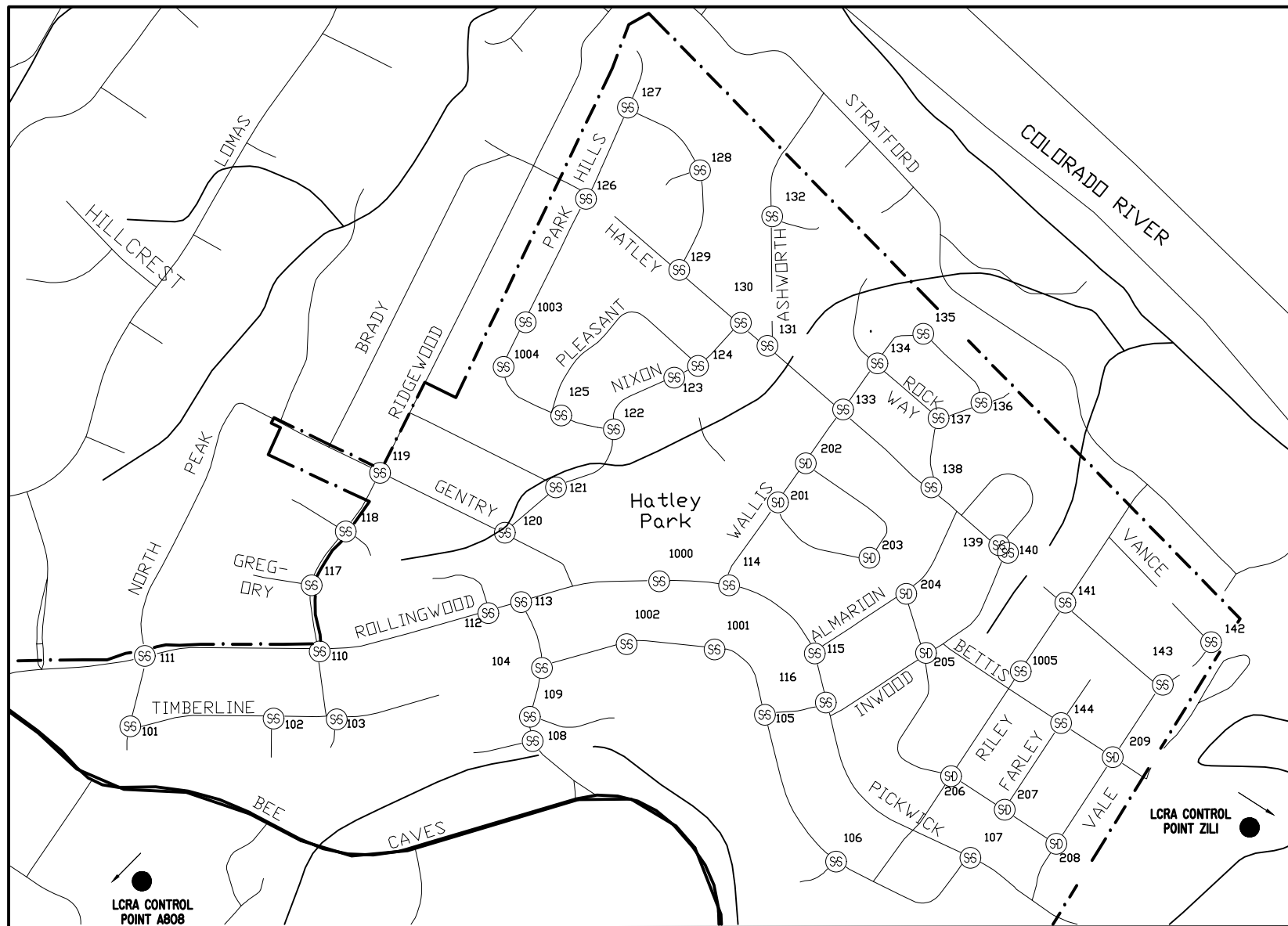
Date of Field Work: 10/26/23, 10/27/23, 10/30/23, 10/31/23 &

Field: ECarlson 12/11/23

Tech: AJimenez, SThomas, & CCarter

Date Drawn: 11/10/23, 11/11/23, 11/12/23, 11/14/23 & 12/13/23

Path: S:\Projects___ BULK\GPS\City_of_Rollingwood\Network_Survey\Production\Dwgs\RW-MH-NetworkSurvey.dwg



Note:

- 1) THE LCRA POINTS SHOWN ON THIS MAP ARE NOT ACCURATELY DEPICTED. THEY HAVE BEEN ADJUSTED TO FIT THIS MAP. FOR THE PRECISE LOCATION USE THE COORDINATES SHOWN HEREON.
- 2) COORDINATES SHOWN ARE BASED ON THE TEXAS STATE PLANE COORDINATE SYSTEM, NAD 83, CENTRAL ZONE (4203), GEOID 2012A. ELEVATIONS ARE BASED OFF OF (NAVD 88).
- 3) CONTROL FOR REFERENCE NETWORK IS BASED ON LCRA MONUMENTS "A808" AND ZIL1. SEE TABLE FOR HORIZONTAL AND VERTICAL INFORMATION.
- 4) ALL SURVEY NETWORK POINTS ARE PUNCH HOLE MARKS IN THE CENTER OF EXISTING MANHOLES AS SHOWN IN THE MAP.

ATS Engineers Inspectors & Surveyors
www.ats-engineers.com
 TBPLS FIRM REG. #10128000
 4910 West Hwy 290
 AUSTIN, TEXAS 78735
 (512) 328-6995
 FAX: (512) 328-6996

THE CITY OF ROLLINGWOOD SEWER MANHOLE REFERENCE NETWORK SURVEY

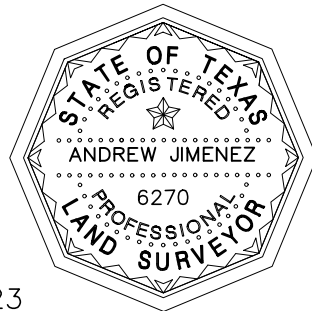
ATS Job # 231011016s

REFERENCE POINTS

<u>101-SAN/SEW MANHOLE</u> N=10072018.93' E=3097512.965' ELEVATION=639.31'	<u>111-SAN/SEW MANHOLE</u> N=10072392.95' E=3099776.653' ELEVATION=646.02'	<u>121-SAN/SEW MANHOLE</u> N=10073290.52' E=3100901.006' ELEVATION=591.15'	<u>131-SAN/SEW MANHOLE</u> N=10074043.73' E=3102487.367' ELEVATION=560.69'	<u>141-SAN/SEW MANHOLE</u> N=10072678.15' E=3102487.367' ELEVATION=556.01'	<u>207-STORM DRAIN MANHOLE</u> N=10071575.74' E=3102163.539' ELEVATION=553.15'	<u>A808-LCRA CONTROL POINT</u> N=10066964.04' E=3093020.785' ELEVATION=729.26'
<u>102-SAN/SEW MANHOLE</u> N=10072059.97' E=3098273.928' ELEVATION=636.49'	<u>112-SAN/SEW MANHOLE</u> N=10072621.70' E=31009416.886' ELEVATION=621.2'	<u>122-SAN/SEW MANHOLE</u> N=10073599.40' E=3100083.898' ELEVATION=587.85'	<u>132-SAN/SEW MANHOLE</u> N=10074732.47' E=3100925.933' ELEVATION=574.85'	<u>142-SAN/SEW MANHOLE</u> N=10072467.33' E=3103261.942' ELEVATION=532.45'	<u>208-STORM DRAIN MANHOLE</u> N=10071393.89' E=3102437.767' ELEVATION=555.29'	<u>Z101-LCRA CONTROL POINT</u> N=10070633.17' E=3104645.018' ELEVATION=515.05'
<u>103-SAN/SEW MANHOLE</u> N=10072056.07' E=3098609.596' ELEVATION=632.8'	<u>113-SAN/SEW MANHOLE</u> N=10072680.14' E=3099591.069' ELEVATION=616.49'	<u>123-SAN/SEW MANHOLE</u> N=10073874.84' E=3100405.956' ELEVATION=582.69'	<u>133-SAN/SEW MANHOLE</u> N=10073704.49' E=3101304.072' ELEVATION=578.00'	<u>143-SAN/SEW MANHOLE</u> N=10072240.24' E=3103003.773' ELEVATION=549.43'	<u>209-STORM DRAIN MANHOLE</u> N=10071854.63' E=3102737.821' ELEVATION=554.88'	
<u>104-SAN/SEW MANHOLE</u> N=10072329.84' E=3099701.417' ELEVATION=584.82'	<u>114-SAN/SEW MANHOLE</u> N=10072768.59' E=3100698.92' ELEVATION=637.21'	<u>124-SAN/SEW MANHOLE</u> N=10073936.57' E=3100531.587' ELEVATION=567.43'	<u>134-SAN/SEW MANHOLE</u> N=10073950.25' E=3101486.567' ELEVATION=563.96'	<u>144-SAN/SEW MANHOLE</u> N=10072035.19' E=3102461.935' ELEVATION=571.17'	<u>1000-SAN/SEW MANHOLE</u> N=10072790.53' E=3100324.909' ELEVATION=627.76'	
<u>105-SAN/SEW MANHOLE</u> N=10072080.37' E=3100887.139' ELEVATION=571.4'	<u>115-SAN/SEW MANHOLE</u> N=10072409.73' E=3101154.899' ELEVATION=630.23'	<u>125-SAN/SEW MANHOLE</u> N=10073673.47' E=3099803.67' ELEVATION=619.46'	<u>135-SAN/SEW MANHOLE</u> N=10074107.02' E=3101730.048' ELEVATION=563.60'	<u>201-STORM DRAIN MANHOLE</u> N=10073210.52' E=3100957.71' ELEVATION=623.17'	<u>1001-SAN/SEW MANHOLE</u> N=10072430.06' E=3100621.489' ELEVATION=634.06'	
<u>106-SAN/SEW MANHOLE</u> N=10071299.28' E=3101266.718' ELEVATION=581.83'	<u>116-SAN/SEW MANHOLE</u> N=10072145.50' E=3101212.095' ELEVATION=613.96'	<u>126-SAN/SEW MANHOLE</u> N=10074825.36' E=3099936.716' ELEVATION=629.58'	<u>136-SAN/SEW MANHOLE</u> N=10073741.06' E=3102038.857' ELEVATION=570.84'	<u>202-STORM DRAIN MANHOLE</u> N=10073418.57' E=3101104.816' ELEVATION=605.74'	<u>1002-SAN/SEW MANHOLE</u> N=10072458.69' E=3100154.519' ELEVATION=621.88'	
<u>107-SAN/SEW MANHOLE</u> N=10071318.72' E=3101980.776' ELEVATION=548.35'	<u>117-SAN/SEW MANHOLE</u> N=10072769.63' E=3098476.387' ELEVATION=643.12'	<u>127-SAN/SEW MANHOLE</u> N=10075312.24' E=3100158.251' ELEVATION=619.49'	<u>137-SAN/SEW MANHOLE</u> N=10073658.98' E=3101811.975' ELEVATION=578.77'	<u>203-STORM DRAIN MANHOLE</u> N=10072915.60' E=3101443.66' ELEVATION=615.80'	<u>1003-SAN/SEW MANHOLE</u> N=10072915.60' E=3099613.352' ELEVATION=623.93'	
<u>108-SAN/SEW MANHOLE</u> N=10071940.82' E=3099652.632' ELEVATION=560.99'	<u>118-SAN/SEW MANHOLE</u> N=10073055.53' E=3098657.978' ELEVATION=643.18'	<u>128-SAN/SEW MANHOLE</u> N=10074978.28' E=3100543.027' ELEVATION=607.92'	<u>138-SAN/SEW MANHOLE</u> N=10073290.71' E=3101772.145' ELEVATION=585.33'	<u>204-STORM DRAIN MANHOLE</u> N=10072724.69' E=3101639.043' ELEVATION=611.01'	<u>1004-SAN/SEW MANHOLE</u> N=10073932.08' E=3099496.369' ELEVATION=623.04'	
<u>109-SAN/SEW MANHOLE</u> N=10072069.97' E=3099637.503' ELEVATION=570.16'	<u>119-SAN/SEW MANHOLE</u> N=10073367.60' E=3098840.44' ELEVATION=645.33'	<u>129-SAN/SEW MANHOLE</u> N=10074447.16' E=3100432.37' ELEVATION=609.25'	<u>139-SAN/SEW MANHOLE</u> N=10072982.81' E=3102134.106' ELEVATION=581.99'	<u>205-STORM DRAIN MANHOLE</u> N=10072409.06' E=3101745.183' ELEVATION=589.61'	<u>1005-SAN/SEW MANHOLE</u> N=10072314.03' E=3102251.082' ELEVATION=581.54'	
<u>110-SAN/SEW MANHOLE</u> N=10072417.22' E=3098520.025' ELEVATION=638.16'	<u>120-SAN/SEW MANHOLE</u> N=10073049.11' E=3099504.038' ELEVATION=602.25'	<u>130-SAN/SEW MANHOLE</u> N=10074165.93' E=3100759.67' ELEVATION=573.93'	<u>140-SAN/SEW MANHOLE</u> N=10072942.18' E=3102181.188' ELEVATION=577.99'	<u>206-STORM DRAIN MANHOLE</u> N=10071753.88' E=3101878.184' ELEVATION=586.32'		

Note:

- 1) THE LCRA POINTS SHOWN ON THIS MAP ARE NOT ACCURATELY DEPICTED . THEY HAVE BEEN ADJUSTED TO FIT THIS MAP. FOR THE PRECISE LOCATION USE THE COORDINATES SHOWN HEREON.
- 2) COORDINATES SHOWN ARE BASED ON THE TEXAS STATE PLANE COORDINATE SYSTEM, NAD 83, CENTRAL ZONE (4203), GEOID 2012A. ELEVATIONS ARE BASED OFF OF (NAVD 88).
- 3) CONTROL FOR REFERENCE NETWORK IS BASED ON LCRA MONUMENTS "A808" AND ZIL1. SEE TABLE FOR HORIZONTAL AND VERTICAL INFORMATION.
- 4) ALL SURVEY NETWORK POINTS ARE PUNCH HOLE MARKS IN THE CENTER OF EXISTING MANHOLES AS SHOWN IN THE MAP.



Andrew Jimenez
ANDREW JIMENEZ

11/14/2023

Date

Registered Professional Land Surveyor

No. 6270 - State of Texas

Client: City of Rollingwood

Date of Field Work: 10/26/23, 10/27/23, 10/30/23, & 10/31/23

Field: ECarlson

Tech: AJimenez, SThomas, & CCarter

Date Drawn: 11/10/23, 11/11/23, 11/12/23 & 11/14/23

Path: S:\Projects___ BULK\GPS\City_of_Rollingwood\Network_Survey\Production\Dwgs\RW-MH-NetworkSurvey.dwg

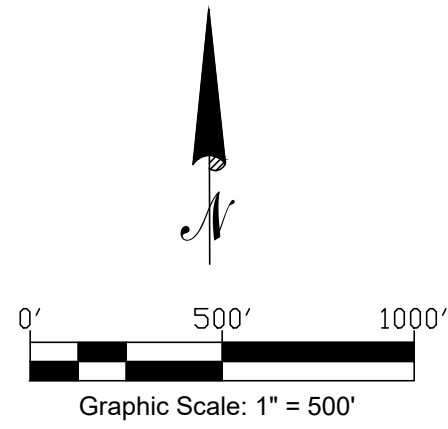
 **ATS Engineers
Inspectors
& Surveyors**
www.ats-engineers.com
TBPLS FIRM REG. #10128000
4910 West Hwy 290
AUSTIN, TEXAS 78735
(512) 328-6995
FAX: (512) 328-6996

THE CITY OF ROLLINGWOOD SEWER MANHOLE REFERENCE NETWORK SURVEY

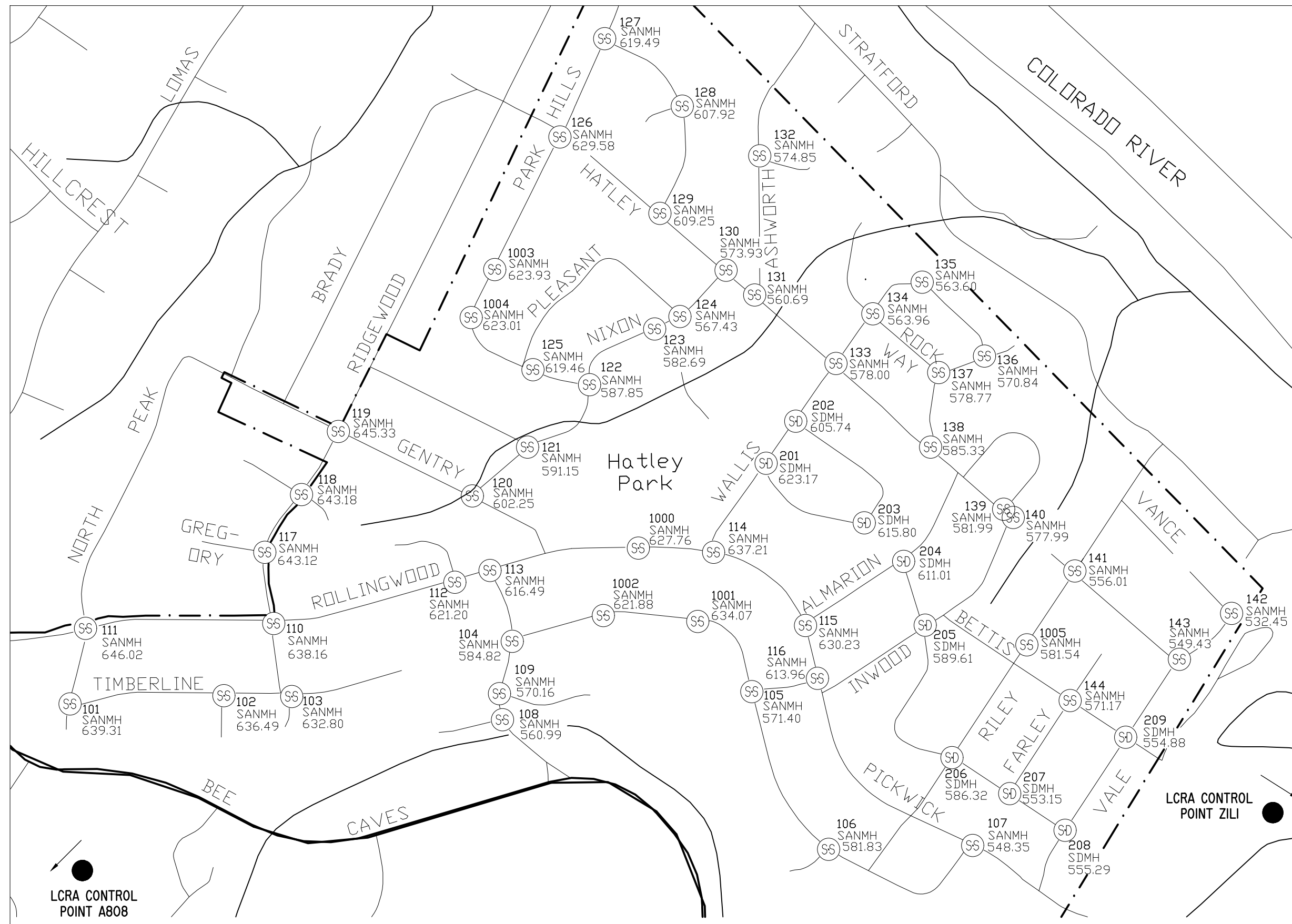
ATS Job #231011016s

REFERENCE POINTS

101-SAN/SEW MANHOLE N=10072018.93' E=3097502.965' ELEVATION=639.31'	103-SAN/SEW MANHOLE N=10072056.07' E=3098609.596' ELEVATION=632.8'	104-SAN/SEW MANHOLE N=10072329.84' E=3099701.417' ELEVATION=584.82'	105-SAN/SEW MANHOLE N=10072080.37' E=3100887.139' ELEVATION=571.4'	106-SAN/SEW MANHOLE N=10071299.28' E=3101266.718' ELEVATION=581.83'	107-SAN/SEW MANHOLE N=10071318.72' E=3101980.776' ELEVATION=548.35'	108-SAN/SEW MANHOLE N=10071940.82' E=3099652.632' ELEVATION=560.99'	109-SAN/SEW MANHOLE N=10072059.97' E=3099637.503' ELEVATION=570.16'	110-SAN/SEW MANHOLE N=10072417.22' E=3098520.029' ELEVATION=638.16'	111-SAN/SEW MANHOLE N=10072392.95' E=3097588.943' ELEVATION=646.02'	112-SAN/SEW MANHOLE N=10072621.70' E=3099416.886' ELEVATION=636.49'	113-SAN/SEW MANHOLE N=10072680.14' E=3099591.069' ELEVATION=632.8'	114-SAN/SEW MANHOLE N=10072768.59' E=3100698.921' ELEVATION=637.21'	115-SAN/SEW MANHOLE N=10072409.73' E=3101154.899' ELEVATION=630.23'	116-SAN/SEW MANHOLE N=10072445.50' E=3101212.095' ELEVATION=613.96'	117-SAN/SEW MANHOLE N=10072769.63' E=3098476.387' ELEVATION=643.12'	118-SAN/SEW MANHOLE N=10073055.53' E=3098657.978' ELEVATION=643.18'	119-SAN/SEW MANHOLE N=10073367.60' E=3098840.44' ELEVATION=645.33'	120-SAN/SEW MANHOLE N=10073049.11' E=3099504.038' ELEVATION=602.25'	121-SAN/SEW MANHOLE N=10073290.52' E=3099776.653' ELEVATION=646.02'	122-SAN/SEW MANHOLE N=10073599.40' E=3100083.898' ELEVATION=587.85'	123-SAN/SEW MANHOLE N=10073874.84' E=3100405.956' ELEVATION=582.69'	124-SAN/SEW MANHOLE N=10073936.25' E=3100531.587' ELEVATION=567.43'	125-SAN/SEW MANHOLE N=10073673.47' E=3099803.67' ELEVATION=619.46'	126-SAN/SEW MANHOLE N=10074825.36' E=3099936.716' ELEVATION=629.58'	127-SAN/SEW MANHOLE N=10075312.24' E=3100158.251' ELEVATION=619.49'	128-SAN/SEW MANHOLE N=10074975.28' E=3100543.027' ELEVATION=607.92'	129-SAN/SEW MANHOLE N=10074447.16' E=3100432.371' ELEVATION=609.25'	130-SAN/SEW MANHOLE N=10074165.93' E=3100759.67' ELEVATION=573.93'	131-SAN/SEW MANHOLE N=10074043.73' E=3100901.006' ELEVATION=560.69'	132-SAN/SEW MANHOLE N=10074732.47' E=3100925.933' ELEVATION=574.85'	133-SAN/SEW MANHOLE N=10073704.49' E=3103304.072' ELEVATION=578.00'	134-SAN/SEW MANHOLE N=10073950.25' E=3101486.567' ELEVATION=563.96'	135-SAN/SEW MANHOLE N=10074107.02' E=3101730.048' ELEVATION=563.60'	136-SAN/SEW MANHOLE N=10073741.06' E=3102038.857' ELEVATION=570.84'	137-SAN/SEW MANHOLE N=10073658.98' E=3101819.975' ELEVATION=578.77'	138-SAN/SEW MANHOLE N=10073290.71' E=3101772.148' ELEVATION=585.33'	139-SAN/SEW MANHOLE N=10072982.81' E=310234.106' ELEVATION=581.99'	140-SAN/SEW MANHOLE N=10072942.18' E=310291.189' ELEVATION=577.99'	141-SAN/SEW MANHOLE N=10072678.15' E=3102487.367' ELEVATION=556.01'	142-SAN/SEW MANHOLE N=10072467.33' E=3103261.942' ELEVATION=532.45'	143-SAN/SEW MANHOLE N=10072240.24' E=3103003.773' ELEVATION=549.43'	144-SAN/SEW MANHOLE N=10072035.19' E=3102461.935' ELEVATION=571.17'	201-STORM DRAIN MANHOLE N=10073210.82' E=3100957.71' ELEVATION=623.17'	202-STORM DRAIN MANHOLE N=10073418.57' E=310104.816' ELEVATION=605.74'	203-STORM DRAIN MANHOLE N=10072915.68' E=3101443.661' ELEVATION=615.80'	204-STORM DRAIN MANHOLE N=10072724.69' E=3101635.043' ELEVATION=610.01'	205-STORM DRAIN MANHOLE N=10072409.06' E=3101724.831' ELEVATION=589.61'	206-STORM DRAIN MANHOLE N=10071753.88' E=3101878.184' ELEVATION=586.32'	207-STORM DRAIN MANHOLE N=10071575.74' E=3102163.539' ELEVATION=553.15'	208-STORM DRAIN MANHOLE N=10071393.89' E=3102437.767' ELEVATION=555.29'	209-STORM DRAIN MANHOLE N=10071854.63' E=3102737.821' ELEVATION=554.88'	1000-SAN/SEW MANHOLE N=10072790.53' E=3100324.909' ELEVATION=627.76'	1001-SAN/SEW MANHOLE N=10072430.06' E=3100621.489' ELEVATION=634.06'	1002-SAN/SEW MANHOLE N=10072458.69' E=3100154.519' ELEVATION=621.88'	1003-SAN/SEW MANHOLE N=10074169.84' E=3099613.352' ELEVATION=623.93'	1004-SAN/SEW MANHOLE N=10073932.08' E=3099496.369' ELEVATION=623.04'	1005-SAN/SEW MANHOLE N=10072314.03' E=3102251.082' ELEVATION=581.54'	A808-LCRA CONTROL POINT N=10066964.04' E=3093020.785' ELEVATION=729.26'	ZL01-LCRA CONTROL POINT N=10070633.17' E=3104645.018' ELEVATION=515.05'
--	---	--	---	--	--	--	--	--	--	--	---	--	--	--	--	--	---	--	--	--	--	--	---	--	--	--	--	---	--	--	--	--	--	--	--	--	---	---	--	--	--	--	---	---	--	--	--	--	--	--	--	---	---	---	---	---	---	--	--




REFERENCE POINTS LOCATION MAP



LEGEND	
●	1/2" IRON ROD FOUND CAPPED
SS	SANITARY SEWER MANHOLE
SD	STORM DRAIN MANHOLE
- - - -	APPROXIMATE CITY LIMIT LINE

- Note:
- 1) THE LCRA POINTS SHOWN ON THIS MAP ARE NOT ACCURATELY DEPICTED. THEY HAVE BEEN ADJUSTED TO FIT THIS MAP. FOR THE PRECISE LOCATION USE THE COORDINATES SHOWN HEREON.
 - 2) COORDINATES SHOWN ARE BASED ON THE TEXAS STATE PLANE COORDINATE SYSTEM, NAD 83, CENTRAL ZONE (4203). GEOID 2012A. ELEVATIONS ARE BASED OFF OF (NAVD 88).
 - 3) CONTROL FOR REFERENCE NETWORK IS BASED ON LCRA MONUMENTS "A808" AND ZL1. SEE TABLE FOR HORIZONTAL AND VERTICAL INFORMATION.
 - 4) ALL SURVEY NETWORK POINTS ARE PUNCH HOLE MARKS IN THE CENTER OF EXISTING MANHOLES AS SHOWN IN THE MAP.


ANDREW JIMENEZ
 Registered Professional Land Surveyor
 No. 6270 - State of Texas
 Client: City of Rollingwood
 Date of Field Work: 10/26/23, 10/27/23, 10/30/23, & 10/31/23
 Field: ECarlson
 Tech: AJimenez, SThomas, & CCarter
 Date Drawn: 11/10/23, 11/11/23, 11/12/23 & 11/14/23
 Path: S:\Projects\BULK\GPS\City_of_Rollingwood_Network_Survey\Production\Dwgs\RW-MH-NetworkSurvey.dwg




ATS Engineers Inspectors & Surveyors
 www.ats-engineers.com #10128000
 TBPLS FIRM REG. #10128000
 4910 West Hwy 290 (512) 328-6895
 AUSTIN, TEXAS 78735 FAX: (512) 328-6896