

1                                   **CITY OF ROLLINGWOOD, TEXAS**

2                                   **RESOLUTION NO. 2025-04-19-12**

3                   **A RESOLUTION OF THE CITY OF ROLLINGWOOD, TEXAS**  
4                   **AUTHORIZING, ESTABLISHING AND APPROVING A RESIDENTIAL**  
5                   **LIGHTING MANUAL**

6           **WHEREAS**, the City of Rollingwood (“City”) is a Texas General Law Municipality  
7 operating under the laws of the State of Texas; and

8           **WHEREAS**, the City is empowered by the Texas Local Government Code to establish  
9 regulations regarding lighting, signs and advertising; and

10          **WHEREAS**, the City has previously adopted regulations regarding residential lighting in  
11 the City’s Code of Ordinances Chapter 107, as amended; and

12          **WHEREAS**, the City Council desires to establish a Residential Lighting Manual as a  
13 supporting document to the Code of Ordinances which contains illustrations, graphical  
14 representations, and examples relating to the lighting regulations contained within the Code of  
15 Ordinances; and

16          **WHEREAS**, the City Council finds that the establishment of a Residential Lighting Manual  
17 will serve a public purpose by allowing for a more efficient government.

18          **NOW, THEREFORE, BE IT RESOLVED BY THE CITY COUNCIL OF THE CITY**  
19 **OF ROLLINGWOOD, TEXAS:**

20   **SECTION 1.** The recitals contained in the preamble hereof are hereby found to be true, and such  
21 recitals are hereby made a part of this Resolution for all purposes and are adopted as a part of the  
22 judgment and findings of the Council.

23   **SECTION 2.** The Residential Lighting Manual is hereby established as set forth in **Exhibit A**  
24 attached hereto.

25   **SECTION 3.** All Resolutions, or parts thereof, which are in conflict or inconsistent with any  
26 provisions of this Resolution are hereby repealed to the extent of such conflict, and the provisions  
27 of this Resolution shall be and remain controlling as to the matters resolved herein.  
28

29   **SECTION 4.** This Resolution shall be construed and enforced in accordance with the laws of the  
30 State of Texas and the United States of America.  
31

32   **SECTION 5.** If any provision of this Resolution or the application thereof to any person or  
33 circumstance shall be held to be invalid, the remainder of this Resolution and the application of  
34 such provision to the other persons and circumstances shall nevertheless be invalid, and the City

Council hereby declares that this Resolution would have been enacted without such invalid provision.

**SECTION 6.** It is officially found, determined, and declared that the meeting at which this Resolution is adopted was open to the public in compliance with the advisory issued by the Office of the Governor and public notice of the time, place, and subject matter of the public business to be considered at such meeting, including this Resolution, was given all as required by the Texas Government Code, Chapter 551, as amended.

**SECTION 7.** This resolution shall take effect immediately upon its passage, and approval as prescribed by law.

**APPROVED, PASSED, AND ADOPTED** by the City Council of the City of Rollingwood, Texas on the \_\_\_\_ day of \_\_\_\_\_, 2025.

APPROVED:

\_\_\_\_\_  
Gavin Massingill, Mayor

ATTEST:

\_\_\_\_\_  
Makayla Rodriguez, City Secretary



## **City of Rollingwood**

# **Residential Lighting Manual**

**Adopted:** \_\_\_\_\_

## **PREFACE**

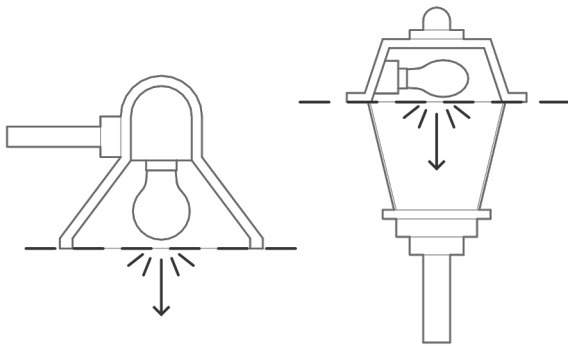
The Residential Lighting Manual is intended as a supporting document to the City of Rollingwood Code of Ordinances, including but not limited to Chapter 107 ZONING. This manual contains illustrations, graphical representations, and examples relating to the regulations found in the Code of Ordinances.

## ARTICLE 1: LIGHTING

### Section 1 – Shielded Light Fixture.

The following exhibits illustrate examples of a shielded light fixtures, conforming and nonconforming light fixtures as described in Code of Ordinances Chapter 107, Article II, Division 1, Sec.107-39(a)(i), definition of “*Shielded*”:

Shielded Light Fixture Exhibit “A”

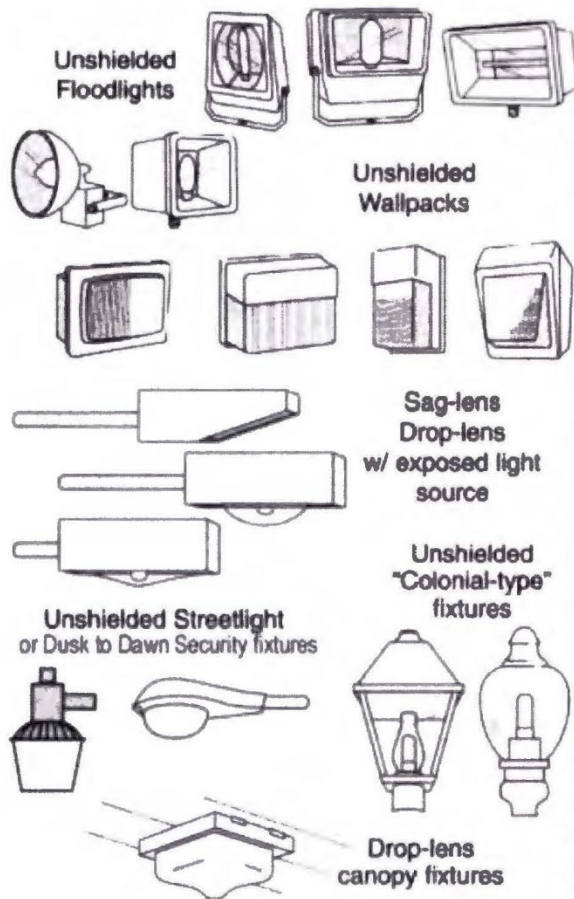


In Exhibit "B" (below), the lights on the left are nonconforming. Those on the right can be used in most cases. However, the mounting height and proximity to the property line may cause them to need additional shielding to prevent the luminous elements from being visible from any other property.

## Exhibit "B"

### UNSHIELDED FIXTURES

#### **Unacceptable / Discouraged** Fixtures that produce glare and light trespass



### Full Cutoff and Fully Shielded Fixtures

#### **Acceptable** Fixtures that shield the light source, to reduce glare and light trespass and to facilitate better vision at night.

