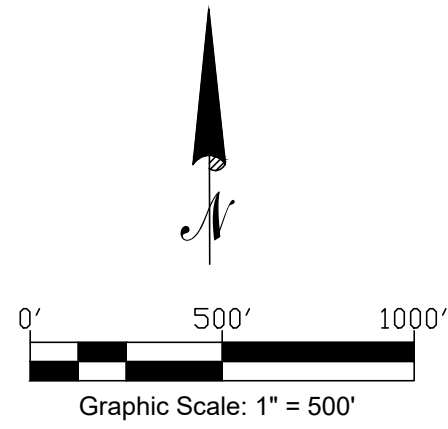


THE CITY OF ROLLINGWOOD SEWER MANHOLE REFERENCE NETWORK SURVEY

ATS Job #231011016s

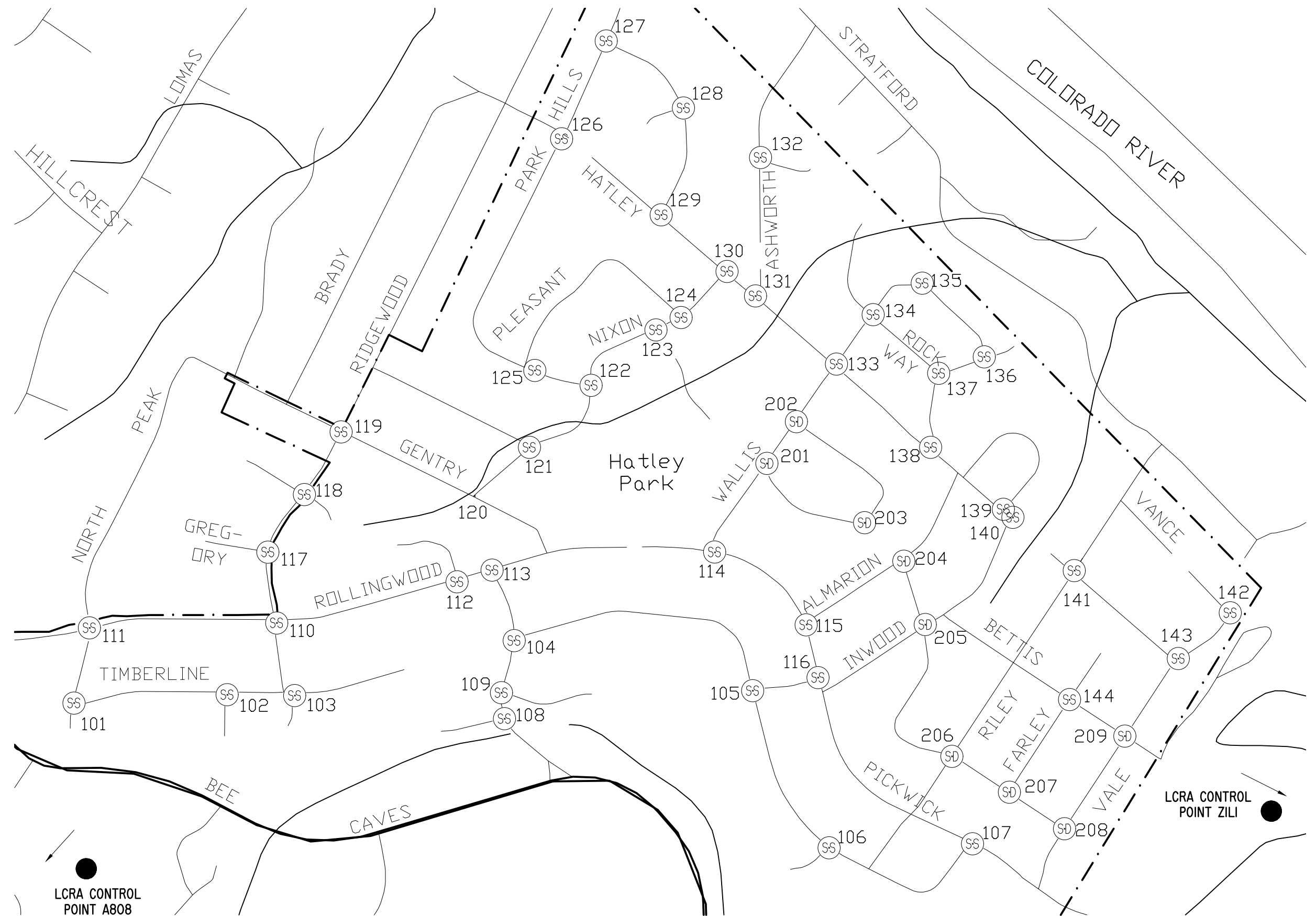


REFERENCE POINTS

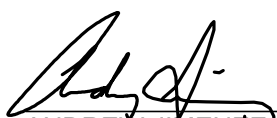
101-SAN/SEW MANHOLE N=10072018.93' E=3097512.965' ELEVATION=639.31'	111-SAN/SEW MANHOLE N=10072392.95' E=3097588.943' ELEVATION=646.02'	121-SAN/SEW MANHOLE N=10073290.52' E=3099776.653' ELEVATION=591.15'	131-SAN/SEW MANHOLE N=10074043.73' E=3100901.006' ELEVATION=560.69'	141-SAN/SEW MANHOLE N=10072678.15' E=3102487.367' ELEVATION=556.01'	207-STORM DRAIN MANHOLE N=10071575.74' E=3102163.539' ELEVATION=553.15'
102-SAN/SEW MANHOLE N=10072059.97' E=3098273.928' ELEVATION=636.49'	112-SAN/SEW MANHOLE N=10072621.70' E=3099416.886' ELEVATION=621.2'	122-SAN/SEW MANHOLE N=10073599.40' E=3100083.898' ELEVATION=587.85'	132-SAN/SEW MANHOLE N=10074732.47' E=3100925.933' ELEVATION=574.85'	142-SAN/SEW MANHOLE N=10072467.33' E=3103261.942' ELEVATION=532.45'	208-STORM DRAIN MANHOLE N=10071393.89' E=3102437.767' ELEVATION=555.29'
103-SAN/SEW MANHOLE N=10072056.07' E=3098609.596' ELEVATION=632.8'	113-SAN/SEW MANHOLE N=10072680.14' E=3099591.069' ELEVATION=616.49'	123-SAN/SEW MANHOLE N=10073874.84' E=3100405.956' ELEVATION=582.69'	133-SAN/SEW MANHOLE N=10073704.49' E=3101304.072' ELEVATION=578.00'	143-SAN/SEW MANHOLE N=10072240.24' E=3103003.773' ELEVATION=549.43'	209-STORM DRAIN MANHOLE N=10071854.63' E=3102737.821' ELEVATION=554.88'
104-SAN/SEW MANHOLE N=10072329.84' E=3099701.417' ELEVATION=584.82'	114-SAN/SEW MANHOLE N=10072768.59' E=3100698.92' ELEVATION=617.21'	124-SAN/SEW MANHOLE N=10073950.57' E=3100531.587' ELEVATION=567.43'	134-SAN/SEW MANHOLE N=10073950.25' E=3101486.567' ELEVATION=563.96'	144-SAN/SEW MANHOLE N=10072035.19' E=3102461.935' ELEVATION=571.17'	210-STORM DRAIN MANHOLE N=10072320.52' E=3100957.71' ELEVATION=623.17'
105-SAN/SEW MANHOLE N=10072080.37' E=3100887.139' ELEVATION=571.4'	115-SAN/SEW MANHOLE N=10072409.73' E=3101154.899' ELEVATION=630.23'	125-SAN/SEW MANHOLE N=10073673.47' E=3099803.67' ELEVATION=619.46'	135-SAN/SEW MANHOLE N=10074107.02' E=3101730.048' ELEVATION=563.60'	145-SAN/SEW MANHOLE N=10072351.91' E=3102461.935' ELEVATION=571.17'	211-STORM DRAIN MANHOLE N=10072224.69' E=3101639.043' ELEVATION=611.01'
106-SAN/SEW MANHOLE N=10072129.28' E=310266.718' ELEVATION=581.83'	116-SAN/SEW MANHOLE N=10072445.50' E=3101212.095' ELEVATION=613.96'	126-SAN/SEW MANHOLE N=10074825.36' E=3099936.716' ELEVATION=629.58'	136-SAN/SEW MANHOLE N=10073740.06' E=3102038.857' ELEVATION=570.84'	146-SAN/SEW MANHOLE N=10073418.57' E=3101104.816' ELEVATION=605.74'	212-STORM DRAIN MANHOLE N=10072724.69' E=3101639.043' ELEVATION=611.01'
107-SAN/SEW MANHOLE N=10071318.72' E=3101980.776' ELEVATION=548.35'	117-SAN/SEW MANHOLE N=10072769.63' E=3098476.387' ELEVATION=643.12'	127-SAN/SEW MANHOLE N=10075312.24' E=3100158.251' ELEVATION=619.49'	137-SAN/SEW MANHOLE N=10073658.99' E=3101811.975' ELEVATION=578.77'	147-SAN/SEW MANHOLE N=10073290.71' E=3101772.145' ELEVATION=585.33'	213-STORM DRAIN MANHOLE N=10072915.60' E=3100443.66' ELEVATION=615.80'
108-SAN/SEW MANHOLE N=10071940.82' E=3099652.632' ELEVATION=560.99'	118-SAN/SEW MANHOLE N=10073055.53' E=3098657.978' ELEVATION=643.18'	128-SAN/SEW MANHOLE N=10074978.28' E=3100543.027' ELEVATION=607.92'	138-SAN/SEW MANHOLE N=10073290.71' E=3101772.145' ELEVATION=585.33'	148-SAN/SEW MANHOLE N=10072982.81' E=3102134.106' ELEVATION=581.99'	214-STORM DRAIN MANHOLE N=10072409.06' E=3101745.183' ELEVATION=589.61'
109-SAN/SEW MANHOLE N=10072069.97' E=3099637.503' ELEVATION=570.16'	119-SAN/SEW MANHOLE N=10073367.60' E=3098840.44' ELEVATION=645.33'	129-SAN/SEW MANHOLE N=10074447.16' E=3100432.37' ELEVATION=609.25'	139-SAN/SEW MANHOLE N=10072982.81' E=3102134.106' ELEVATION=581.99'	149-SAN/SEW MANHOLE N=10072942.18' E=3102181.888' ELEVATION=577.99'	215-STORM DRAIN MANHOLE N=10072942.18' E=3101878.184' ELEVATION=586.32'
110-SAN/SEW MANHOLE N=10072417.22' E=3098520.025' ELEVATION=638.16'	120-SAN/SEW MANHOLE N=10073049.11' E=3099504.038' ELEVATION=602.25'	130-SAN/SEW MANHOLE N=10074165.93' E=3100759.67' ELEVATION=573.93'	140-SAN/SEW MANHOLE N=10072942.18' E=3102181.888' ELEVATION=577.99'		

LEGEND	
●	1/2" IRON ROD FOUND CAPPED
○	1/2" IRON ROD SET "ATS ENGINEERS"
X	POINT LOCATION
SS	SANITARY SEWER MANHOLE
SD	STORM DRAIN MANHOLE
CPS	CONTROL POINT SET
- - - - -	APPROXIMATE CITY LIMIT LINE

REFERENCE POINTS LOCATION MAP



Note:
 1) THE LCRA POINTS SHOWN ON THIS MAP ARE NOT ACCURATELY DEPICTED. THEY HAVE BEEN ADJUSTED TO FIT THIS MAP. FOR THE PRECISE LOCATION USE THE COORDINATES SHOWN HEREON.
 2) COORDINATES SHOWN ARE BASED ON THE TEXAS STATE PLANE COORDINATE SYSTEM, NAD 83, CENTRAL ZONE (4203), GEOID 2012A. ELEVATIONS ARE BASED OFF OF (NAVD 88).
 3) CONTROL FOR REFERENCE NETWORK IS BASED ON LCRA MONUMENTS "A808" AND ZILI. SEE TABLE FOR HORIZONTAL AND VERTICAL INFORMATION.


ANDREW JIMENEZ
 Registered Professional Land Surveyor
 No. 6270 - State of Texas
 Client: City of Rollingwood
 Date of Field Work: 10/26/23, 10/27/23, 10/30/23, & 10/31/23
 Field: ECarlson
 Tech: AJimenez, SThomson, & CCarter
 Date Drawn: 11/10/23, 11/11/23, 11/12/23 & 11/14/23
 Path: S:\Projects\BULK\City_of_Rollingwood\Network_Survey\Production\Dwgs\RW-MH-NetworkSurvey.dwg

11/14/2023
Date




ATS Engineers Inspectors & Surveyors
 www.ats-engineers.com
 TBPLS FIRM REG. #10128000
 4910 West Hwy 290
 AUSTIN, TEXAS 78735
 (512) 328-6995
 FAX: (512) 328-6996