

2023 Pavement Management Report





Objective

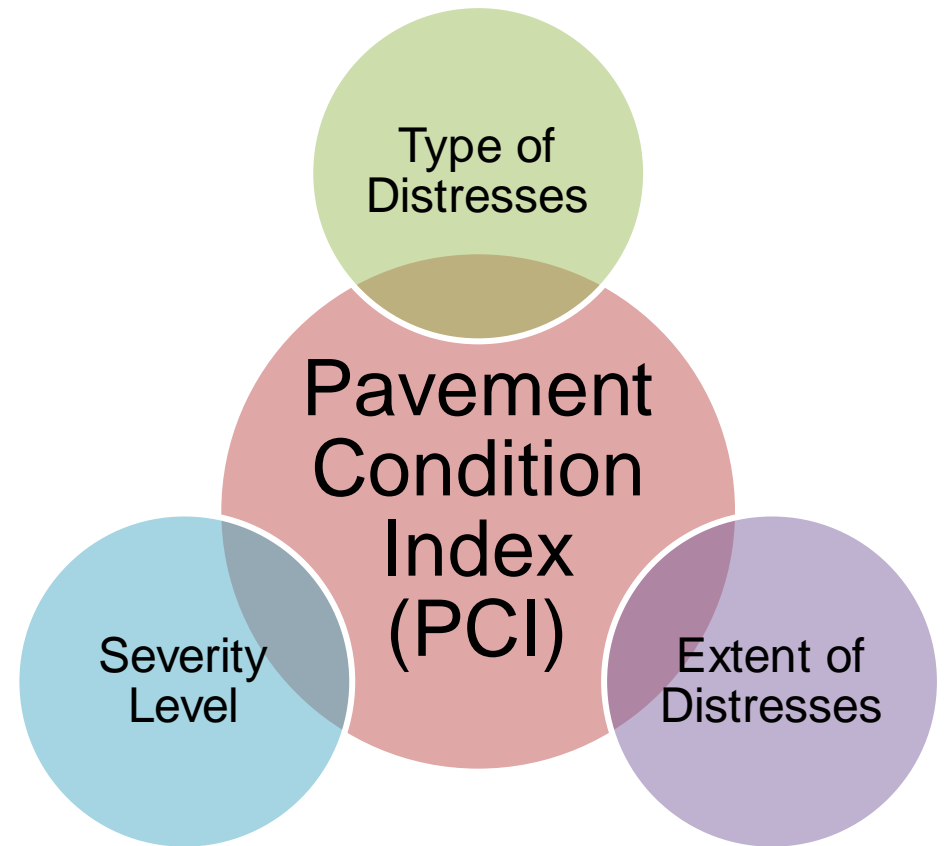
1. Assess Rollingwood's 10.4 miles of pavement
2. Recommend a technically-based annual budget for ongoing pavement maintenance

2023 Pavement Management Report

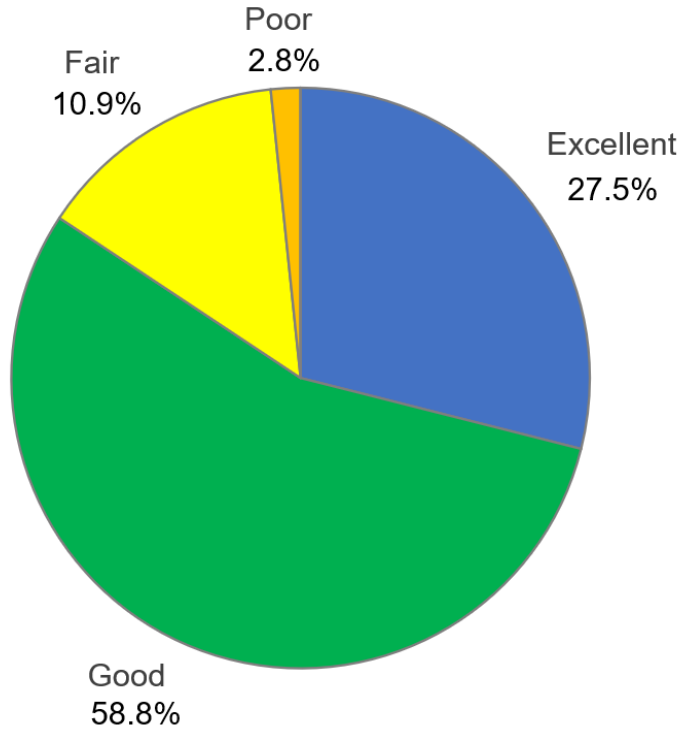
1. Performed visual inspections in August
2. Calculated a Pavement Condition Index (PCI) for each road segment
3. Compared 3 approaches to pavement maintenance
4. Recommended annual budget for Rollingwood pavement maintenance



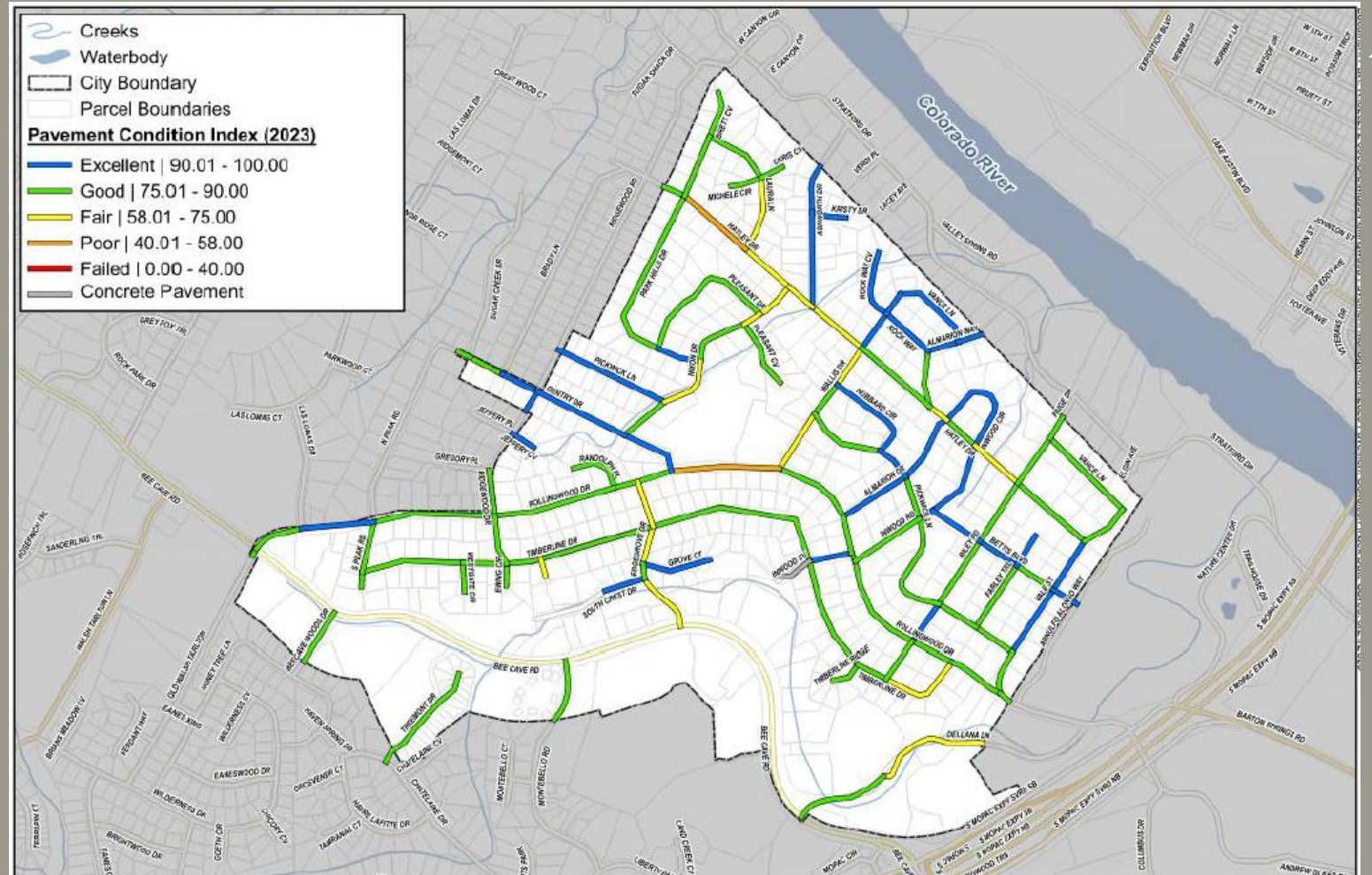
How is Pavement Condition Evaluated?



DISTRIBUTION OF PAVEMENT CONDITIONS



Average PCI in Rollingwood
84.4



Category	Pavement Condition Index (PCI)	Recommended Strategy
Excellent	90.01 – 100.00	Corrective Maintenance
★ Good	75.01 – 90.00	Preventative Maintenance
Fair	58.01 – 75.00	Mill/Overlay
Poor	40.01 – 58.00	Reclamation
Failed	0.00 – 40.00	Reconstruction

Pavement Rating Examples



Almarion Way

PCI Rating = 92

Excellent

Strategy: Creak sealing



Beecave Woods Dr

PCI Rating = 80

Good

**Strategy: Crack sealing,
rejuvenators, fog sealing,
pothole repairs**

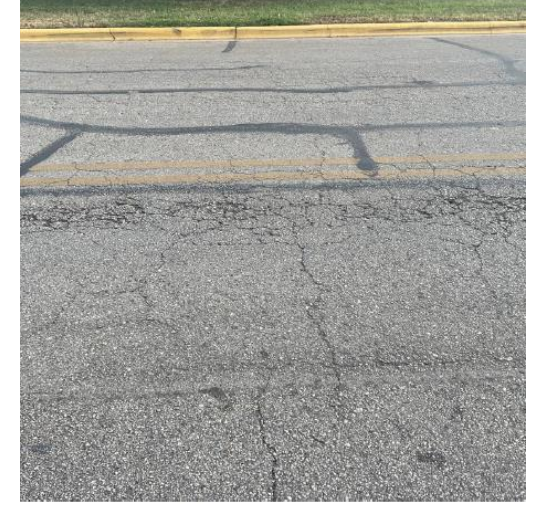


Timberline Dr

PCI Rating = 66

Fair

Strategy: Mill and Overlay



Rollingwood Dr

PCI = 48

Poor

**Strategy: Full Depth
Reclamation**

Which Type of Maintenance?



Corrective Maintenance
Typical for Excellent & Good
Rated Roadways



Mill and Overlay
Typical for Fair Rated
Roadways

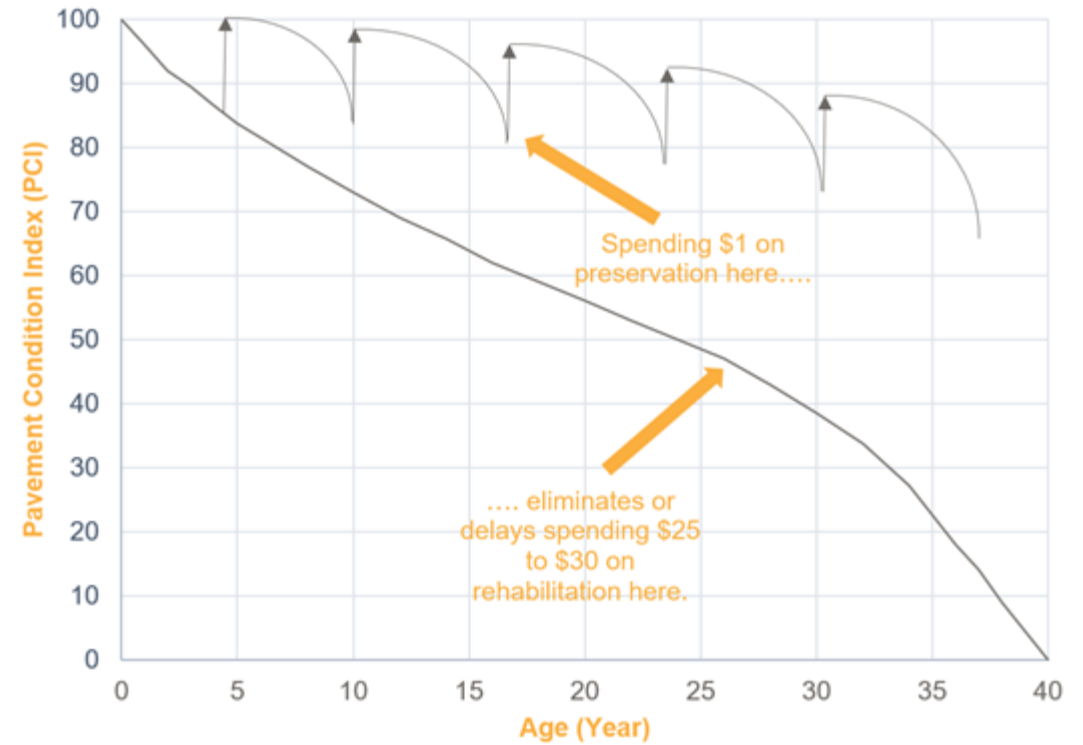
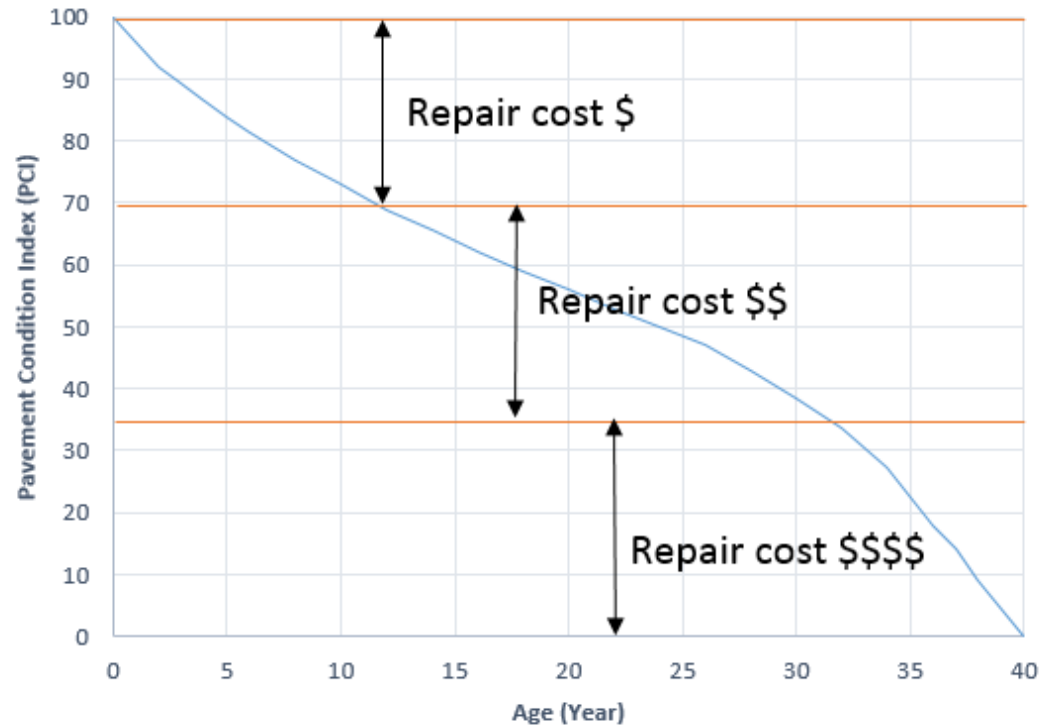


Full Depth Reclamation
Typical for Poor Rated
Roadways



Reconstruction
Typical for Failing Roadways

Repair Costs with Asphalt Deterioration





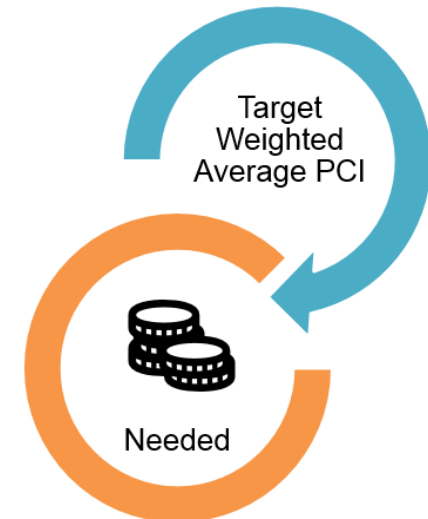
5-Year CIP Scenario Comparison

Scenario	Total 5-Year Budget	2028 Average PCI
1: No Maintenance	\$0	72.8
2: Increase Every Segment PCI > 75	\$2,575,000	83.0
3: Maintain Average PCI Over 84.4	\$1,254,000	84.7

Budget
Driven
Model



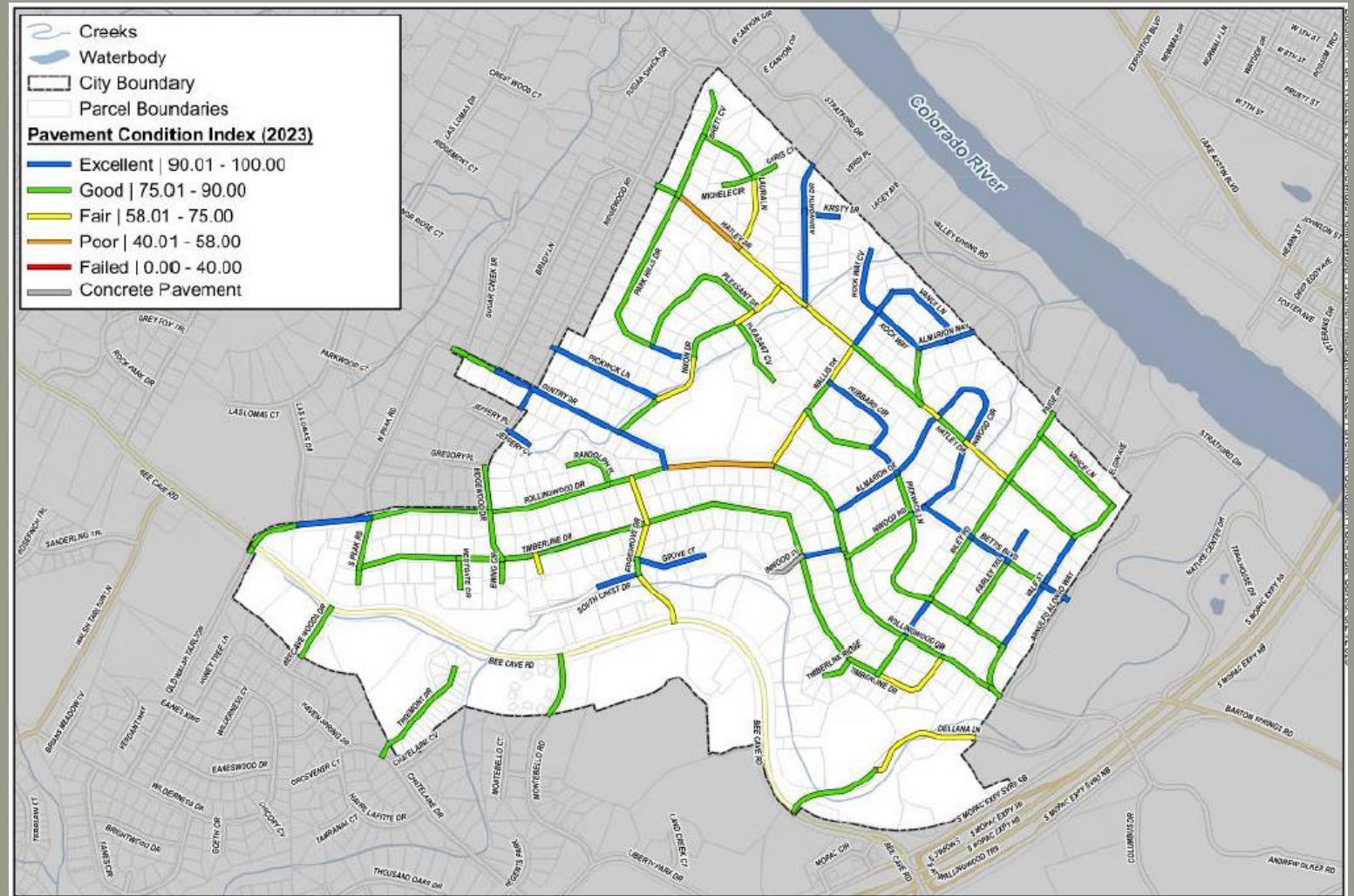
PCI
Driven
Model



WSB recommends an annual pavement maintenance budget of

\$275,000 - \$300,000

Goal: Maintain pavement PCI in current condition



Scenario	Total 5-Year Budget	2028 Average PCI
1: No Maintenance	\$0	72.8
2: Increase Every Segment PCI > 75	\$2,575,000	83.0
3: Maintain Average PCI Over 84.4	\$1,254,000	84.7



Next Steps

1. Incorporate pending projects into the overall system
2. Develop 5-year CIP of prioritized projects
3. Develop funding plan for the CIP
4. Implement the CIP
 - Annual/bi-annual program
5. Revisit CIP annually
6. Evaluate road network every three years



THANK YOU

