

ROLLINGWOOD DRIVE
PROPERTY LINE

Plant List

Key	Common Name	Botanical Name	Size	Height	Spread	Remarks	O.C.	Qty.
ABB	American Beautyberry	Callicarpa americana	5 gal	24"-36"	20"-24"		48"	4
AGA	Agave	Mahonia trifoliolata	10 gal	30"-36"	30"-36"		42"	24
BMF	Blue Mistleflower	Eupatorium coelestium	1 gal	10"-12"	8"		24"	16
BUR	Bur Oak	Quercus macrocarpa	300 gal	14'-15'	7'-8'	8' cal. std full-sym canopy	/	3
CHQ	Chinquapin Oak	Quercus muhlenbergii	300 gal	14'-15'	7'-8'	8' cal. std full-sym canopy	/	3
CRV	Tangerine Beauty Crossvine	Bignonia capreolata 'Tangerine Beauty'	5 gal	30" Staked		attach to fence	/	7
DNL	Bulbs Desert Willow	Chiosaphys linearis 'Bulbs'	24" x 36"	6'-7'	3'-4'	multi-trunk	/	1
FLA	Flame Acanthus	Ipomoea quadrifida wrightii	1 gal	12'-15'	10'-12"		36"	24
FRO	Froglut	Phyllis nodiflora	1 gal	1'-2'	8"		30"	14
GAU	Butterfly Gaura	Diervilla linothymum	1 gal	10"-12"	8"	white flowering	24"	11
GCM	Gulf Coast Muhly	Muhlenbergia capillaris	1 gal	10"-12"	8"		36"	22
GGA	Green Globe Agave	Agave sp. Green Globe	10 gal	15'-18'	10'-12"	full & symmetrical	/	7
GTU	Chang's Weibull Hesperaloe	Hesperaloe parviflora sp. changii	10 gal	30"-36"	10"-20"	full & symmetrical	4' min	13
HCS	Heavenly Cloud Sage	Leucophyllum sp. 'Heavenly Cloud'	5 gal	18'-24"	18'-24"		48"	4
INL	Inland Sea Oats	Chasmanthium latifolium	1 gal	12'-15'	8"		24"	85
KID	Texas Kidneywood	Eysenhardtia texana	5 gal	30"-36"	12'-15'		/	8
LBS	Little Bluestem	Schizanthus scoparium	1 gal	15'-18"	8"		30"	19
LMG	Lindeheimer's Muhlygrass	Muhlenbergia lindheimeri	1 gal	10"-12"	8"		42"	26
MHO	Mexican Honeycuckle	Lonicera spicata	1 gal	10'-12"	8"		30"	24
MPL	Mexican Plum	Prunus mexicana	30 gal	36"-42"	30"-36"	4" caliper	/	1
MTL	Texas Mountain Laurel	Sophora secundiflora	30 gal	3'-4'	24"-30"	multi-trunk	/	18
MTR	Montgomery Oak	Quercus polymorpha	300 gal	14'-15'	7'-8'	8' cal. std full-sym canopy	/	3
PAV	Rock Rose	Parsonsia lasiocarpa	1 gal	12'-15'	10'-12"	full	36"	15
PN	Pine Mistle	Muhlenbergia dubia	1 gal	10'-12"	8"		42"	26
PTL	Purple Trailing Lantana	Lantana montevidensis	1 gal	3'-4'	5'-6"		30"	18
REB	Texas Redbud	Cercis canadensis var. texensis	30 gal	36"-42"	30"-36"	4" caliper	/	2
RBV	Rusty Blackhaw Viburnum	Viburnum rufidulum	30 gal	5'-6'	30"-36"	4" total cal., multi-trunk	/	3
RLD	Roughleaf Dogwood	Cornus drummondii	30 gal	5'-6'	30"-36"	4" total cal., multi-trunk	/	7
RYU	Red Yucca	Hesperaloe parviflora	10 gal	18'-24"	18'-24"		42"	26
SAR	San Antonio Rose Sage	Leucophyllum sp. 'San Antonio Rose'	5 gal	18'-24"	18'-24"		48"	4
SLG	Shalimarleaf Goldeneye	Viguiera stansibilia	5 gal	18'-24"	18'-24"		30"	16
SPP	Sorrelless Privet Pear	Daphne sp.	5 gal	12'-15'	12'-15'		/	15
TPE	Texas Persimmon	Diospyros texana	30 gal	5'-6'	30"-36"	4" total cal., multi-trunk	/	3
TUC	Big Momma Turk's Cap	Malvastrum drummondii 'Big Momma'	1 gal	12'-14"	5'-6"		36"	17
WMF	White Mistleflower	Eupatorium havanense	5 gal	18'-24"	18'-24"		36"	3
WST	Windy Stenandria	Stenandria borealis	1 gal	10'-12"	8"		30"	25
YAU	Pride of Houston Yaupon	Ilex vomitoria 'Pride of Houston'	30 gal	5'-6'	30"-36"	4" total cal., multi-trunk	48"	25
ZEX	Orange Ziermeria	Ziermeria hospida	1 gal	8'-10"	8'-10"		24"	24

Landscape Notes

Familiarization with Jobsite: Landscape contractors should thoroughly familiarize themselves with the working area as it relates to the Construction Documents prior to the commencement of any construction activity and notify the Landscape Architect where discrepancies are encountered. Contractor to verify the location of underground utilities prior to any excavation. Landscape contractor to be responsible for repairing any damage to existing hardscape, underground electrical and existing irrigation to remain.

Protection of Existing Vegetation: Existing trees scheduled to remain should be protected from injury or damage to roots, trunks, or branches by placing tree protection fencing in areas shown on plan. Damaged trees or vegetation to be repaired immediately in a manner acceptable to the Landscape Architect. Inexpediately damaged trees or shrubs must be replaced with ones of similar size and shape at the expense of the Contractor. A value to be determined in accordance with the tree evaluation formula as described in "A Guide to the Professional Evaluation of Landscape Trees, Specimen Shrubs and Evergreens", published by the International Society of Arboriculture.

Treatment of Existing Weeds: Existing stands of bermudagrass, johnsongrass, nutsedge, and noxious weeds to be treated with herbicide before construction begins. Nutsedge to be treated with "Image" or "Managor". Other weeds to be treated with "Fusar", "Roundup", or equal herbicide. Use care not to overapply onto existing vegetation to remain. Treatment shall be in strict accordance with manufacturer's specifications and shall be accomplished to allow sufficient time for a complete kill prior to starting any soil preparation.

Grading and Earthwork: Contractor to ensure positive drainage. Planting mix to be added to fill any depression that may hold excess moisture. Planting mix to be added to any planting area that has less than 6" of existing soil in order to achieve a 6" minimum soil profile after soil settlement. Minimize the addition of planting mix under dripline of existing trees. Final grading to be approved by Landscape Architect.

Decomposed Granite Area: Granite path to receive a 3 1/2" layer of decomposed granite after compaction. Granite to be wetted and compacted with a plate compactor to achieve a smooth and even surface free from undulations.

Planting Mix: Planting mix to be "Thunder Dirt" as supplied by Geo Growers, 12002 B Hwy 290 West, Austin TX 78737 (512) 892-2722. Planting mix substitutions to be approved by Landscape Architect prior to delivery to site.

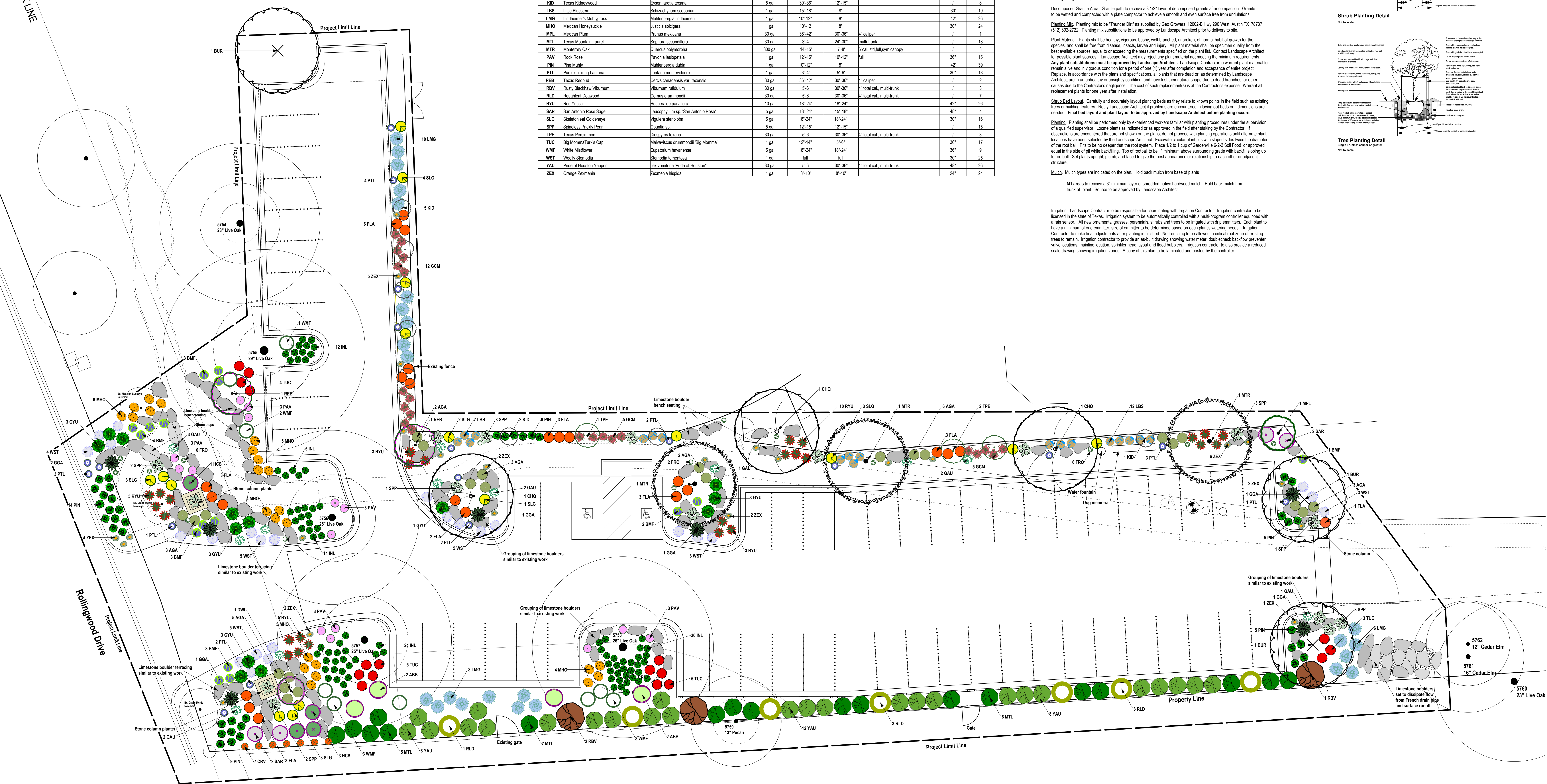
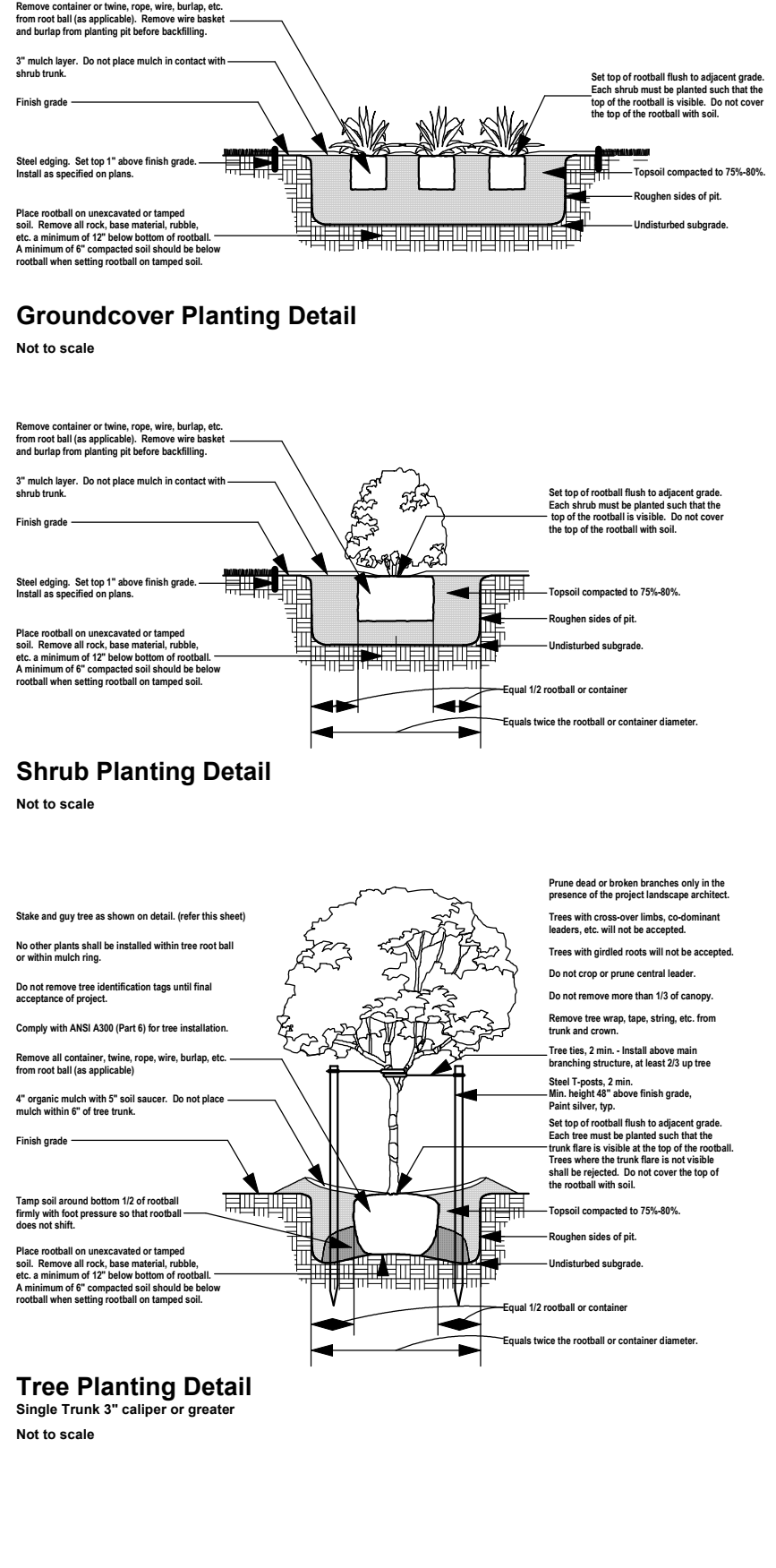
Plant Material: Plants shall be healthy, vigorous, bushy, well-branched, unbroken, of normal habit of growth for the species, and shall be free from disease, insects, larvae and injury. All plant material shall be specimen quality from the best available sources, equal to or exceeding the measurements specified on the plant list. Contact Landscape Architect for possible plant sources. Landscape Architect may reject any plant material not meeting the minimum requirements. Any plant substitutions must be approved by Landscape Architect. Landscape Contractor to warrant plant material to remain alive and in vigorous condition for a period of one (1) year after completion and acceptance of entire project. Replace, in accordance with the plans and specifications, all plants that are dead or, as determined by Landscape Architect, are in an unhealthy or unsightly condition, and have lost their natural shape due to dead branches, or other causes due to the Contractor's negligence. The cost of such replacement(s) is at the Contractor's expense. Warrant all replacement plants for one year after installation.


Shrub Bed Layout: Carefully and accurately layout planting beds as they relate to known points in the field such as existing trees or building features. Notify Landscape Architect if problems are encountered in laying out beds or dimensions are needed. Final bed layout and plant layout to be approved by Landscape Architect before planting occurs.

Planting: Planting shall be performed only by experienced workers familiar with planting procedures under the supervision of a qualified supervisor. Locate plants as indicated or as approved in the field after staking by the Contractor. If obstructions are encountered that are not shown on the plans, do not proceed with planting operations until alternate plant locations have been selected by the Landscape Architect. Excavate circular plant pits with sloped sides twice the diameter of the root ball. Pits to be no deeper than the root system. Place 1/2 to 1 cup of Gardenville 6-2-2 Soil Food or approved equal in the side of pit while backfilling. Top of rootball to be 1" minimum above surrounding grade with backfill sloping up to rootball. Set plants upright, plumb, and faced to give the best appearance or relationship to each other or adjacent structure.

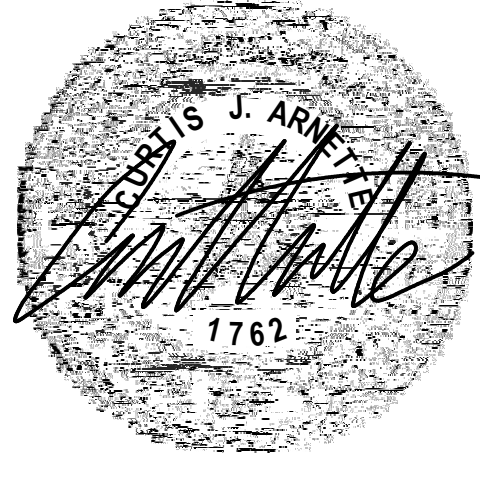
Mulch: Mulch types are indicated on the plan. Hold back mulch from base of plants.

M1 areas: To receive a 3" minimum layer of shredded native hardwood mulch. Hold back mulch from trunk of plant. Source to be approved by Landscape Architect.





curt arnette, asia
landscape architect
6114 ginitia lane
austin, texas 78739
512.415.2097
mail@sitiodesign.com
sitiodesign.com



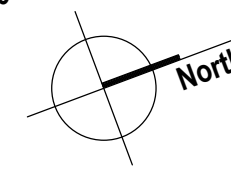
Landscape Development Plan for the
Rollingwood Park
Rollingwood, TX 78746
Rollingwood Drive

ProgressSet
Not For Construction

Date: 1/07/2026

Revised:

Planting Plan
Scale 1" = 10'-0"



L2
Sheet 2 of 2