

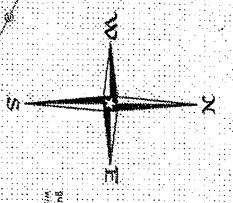
LOT 9

LOT 8

LINE DRIVE (150)

Elevation = 526.42'

ROLLIN

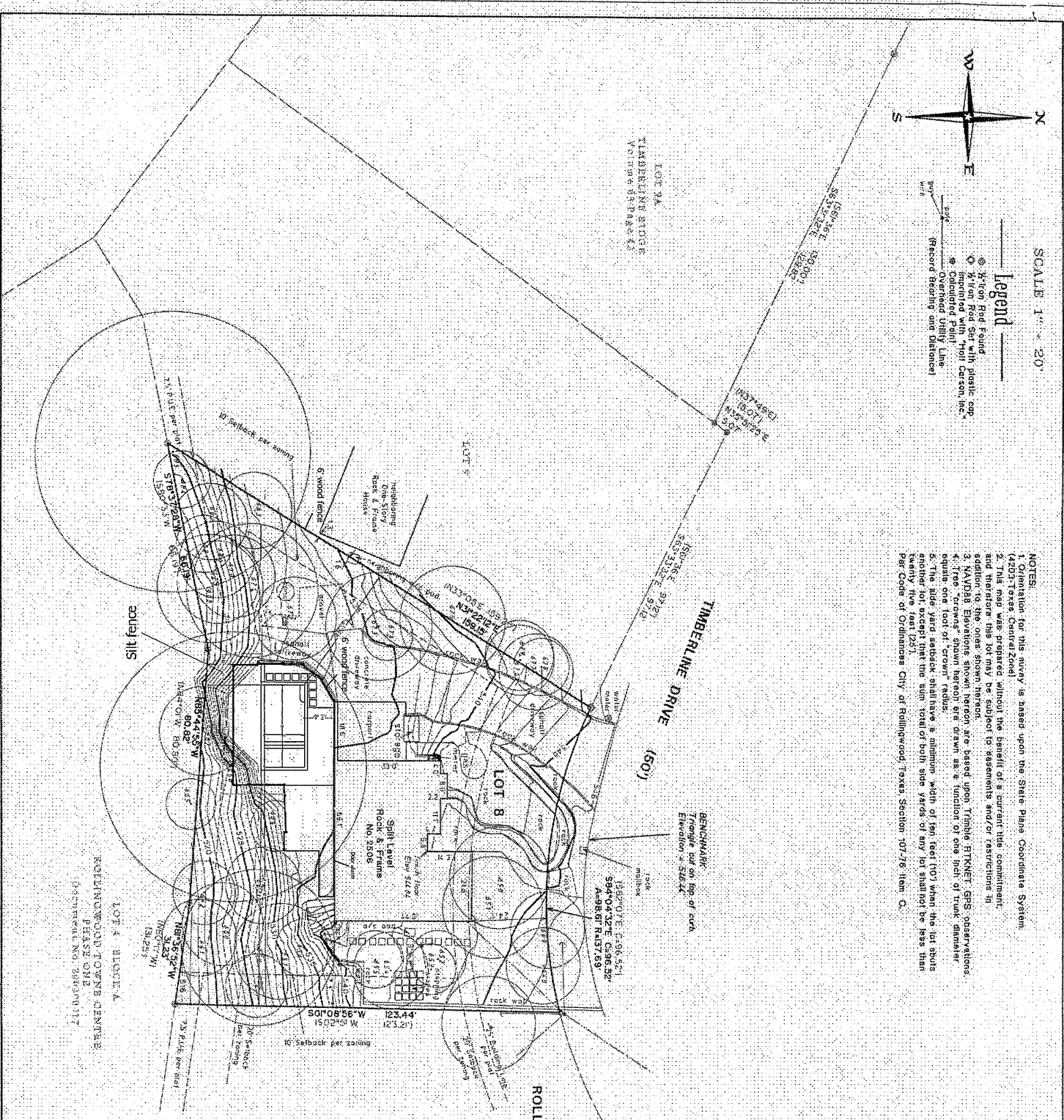


SCALE 1" = 20'

Legend

- ⊙ X-Ton Rod Found
- X-Ton Rod Set with plastic cap
- ⊖ Contoured Point
- Overlaid Utility Line
- Record Bearing and Distance

- NOTES:
1. Computation for this survey is based upon the State Plane Coordinate System (4203 Texas Central Zone).
 2. This map was prepared without the benefit of a current title commitment and therefore this lot may be subject to easements and/or restrictions in addition to the ones shown hereon.
 3. NAVD83 Elevations shown hereon are based upon Trimble RITKNET GPS observations.
 4. Tree "crowns" shown hereon are drawn as a function of one inch of trunk diameter equals one foot of "crown" radius.
 5. The side yard setback shall have a minimum width of ten feet (10') when the lot abuts another lot except that the sum total of both side yards of any lot shall not be less than twenty five feet (25').
 6. Code of Ordinances City of Rollingwood, Texas Section 107.26 Item C.



ROLLINGWOOD PARK ESTATES
Volume 76, Page 91.

TREE LIST

A	15' Cedar Elm
640	15' Live Oak
641	15' Live Oak
642	15' Live Oak
643	15' Live Oak
644	15' Live Oak
645	15' Live Oak
646	15' Live Oak
647	15' Live Oak
648	15' Live Oak
649	15' Live Oak
650	15' Live Oak
651	15' Live Oak
652	15' Live Oak
653	15' Live Oak
654	15' Live Oak
655	15' Live Oak
656	15' Live Oak
657	15' Live Oak
658	15' Live Oak
659	15' Live Oak
660	15' Live Oak
661	15' Live Oak
662	15' Live Oak
663	15' Live Oak
664	15' Live Oak
665	15' Live Oak
666	15' Live Oak
667	15' Live Oak
668	15' Live Oak
669	15' Live Oak
670	15' Live Oak
671	15' Live Oak
672	15' Live Oak
673	15' Live Oak
674	15' Live Oak
675	15' Live Oak
676	15' Live Oak
677	15' Live Oak
678	15' Live Oak
679	15' Live Oak
680	15' Live Oak
681	15' Live Oak
682	15' Live Oak
683	15' Live Oak
684	15' Live Oak
685	15' Live Oak
686	15' Live Oak
687	15' Live Oak
688	15' Live Oak
689	15' Live Oak
690	15' Live Oak
691	15' Live Oak
692	15' Live Oak
693	15' Live Oak
694	15' Live Oak
695	15' Live Oak
696	15' Live Oak
697	15' Live Oak
698	15' Live Oak
699	15' Live Oak
700	15' Live Oak

TOPOGRAPHIC SURVEY MAP OF:
LOT 8, ROLL INWOOD PARK ESTATES, A
SUBDIVISION IN TRAVIS COUNTY, TEXAS,
ACCORDING TO THE MAP OR PLAT THEREOF
RECORDED IN VOLUME 76 PAGE 91 OF THE
PLAT RECORDS OF TRAVIS COUNTY, TEXAS,
LOCATED AT 2606 TIMBERLINE DRIVE.

PREPARED: April 29th, 2021
BY:

Holt Carson
Registered Professional Land Surveyor No. 5166
HOLT CARSON INC.
1904 Fortview Road Austin, Texas 78704
Est. Since 1954
Firm Registration Number: 10050700