



# Municipal Separate Storm Sewer System (MS4) Program: An Overview

AUGUST 27, 2025

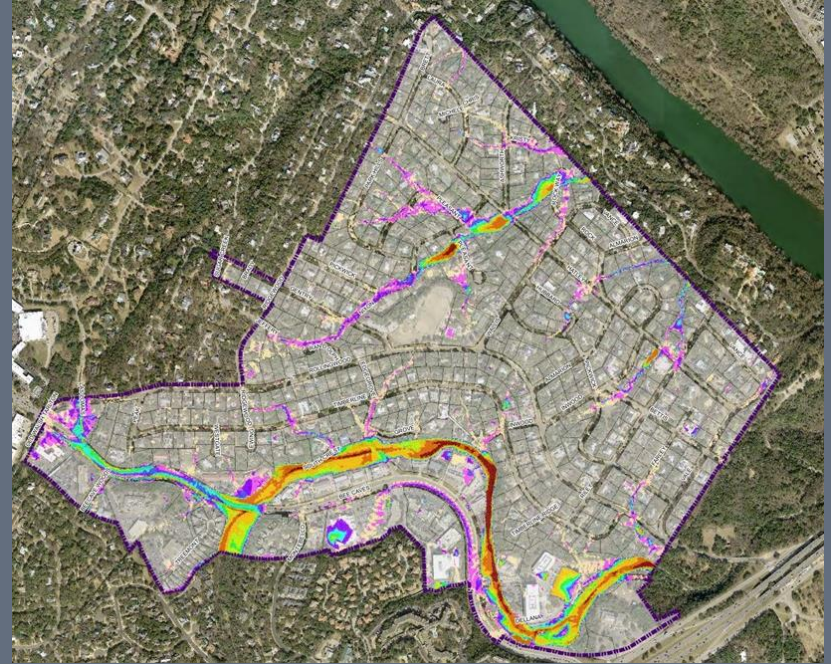


**K·FRIESE**  
+ ASSOCIATES  
A **LOCHNER** COMPANY



# What is an MS4?

- Municipal Separate Storm Sewer System (MS4) – An MS4 is a publicly-owned or operated stormwater drainage system
  - Designed to collect or convey stormwater
  - Includes storm drains, ditches, curbs, gutters, municipal streets, and roads with drainage systems
- Regulated by TCEQ per EPA



# MS4 | Storm Water Management Program (SWMP)

- Prevent harmful pollutants from entering MS4s
- Permitting and report to TCEQ per
  - EPA Clean Water Act (402)
  - Texas Water Code (Ch. 26)





# MS4 | Storm Water Management Program (SWMP)

- Permit renewal every 5 years
- SWMP outlines measures for compliance with MS4 permit (TXR0400000)
- Manages the quality of the discharge from MS4
  - Minimum Control Measures (MCM)
  - Best Management Practice (BMPs)



# MS4 | Minimum Control Measures (MCM)

- Our Compliance Program (Annual Reporting) includes:
  - Public Education, Outreach, & Involvement
  - Illicit Discharge Detection & Elimination
  - Construction Site Storm Water Runoff
  - Post-Construction Storm Water Management
  - Pollution Prevention & Good Housekeeping



# MS4| Questions?

