



# MoPac South Open House #6

Welcome and thank you for your interest and participation in the MoPac South Environmental Study.

## Today we invite you to:

- Explore the exhibits
- Speak to the project team
- Submit a comment; particularly about:
  - Mobility, connectivity, and safety concerns
  - Environmental constraints
  - The Recommended Build Alternative

## Official Comment Period

*To be included in the official record for the open house, comments must be postmarked or received by midnight Dec. 29, 2024. Comments submitted outside of the official comment period or via other channels than those listed above will not be considered part of the record for this open house.*

## How to Submit a Comment

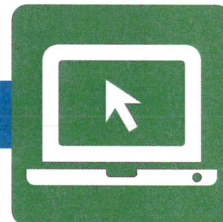


**In Person Today**



**Email**

[mopacsouth@ctrma.org](mailto:mopacsouth@ctrma.org)



**Online**

[voh.mopacsouth.com](http://voh.mopacsouth.com)



**Mail**

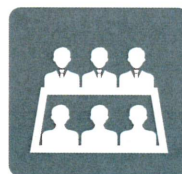
Central Texas  
Regional Mobility Authority  
c/o MoPac South  
3300 N. IH 35  
Suite 300  
Austin, TX 78705

## Next Steps



**Draft Environmental Assessment**

- Publish the Draft Environmental document for public review



**Public Hearing**

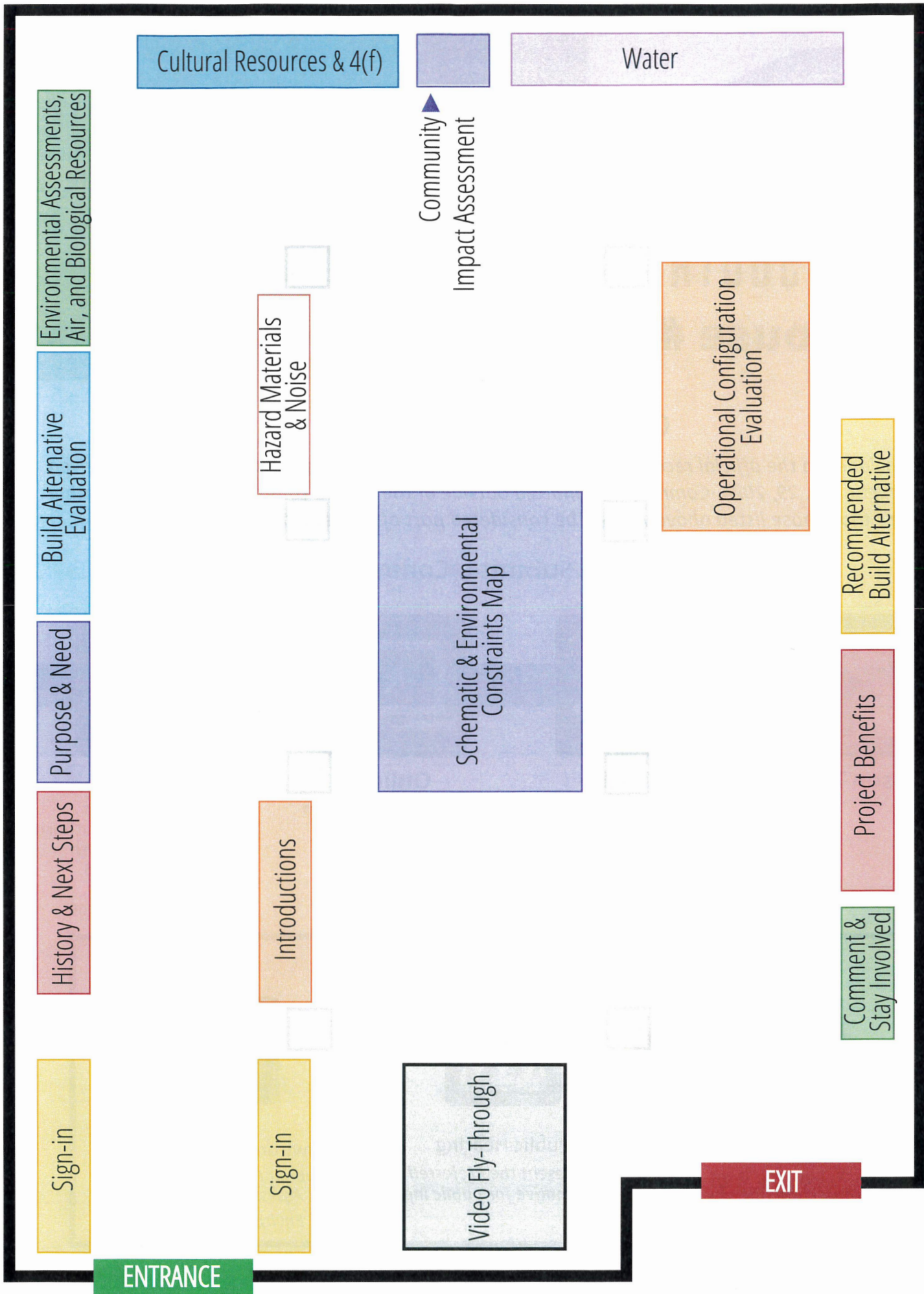
- Present the Preferred Alternative for public input



**Finalize Environmental Studies**

- Submit Final Environmental Assessment document
- Environmental Finding

*The Virtual Open House at [voh.mopacsouth.com](http://voh.mopacsouth.com) will remain open through Sun., Dec. 29, 2024.*





MoPac South

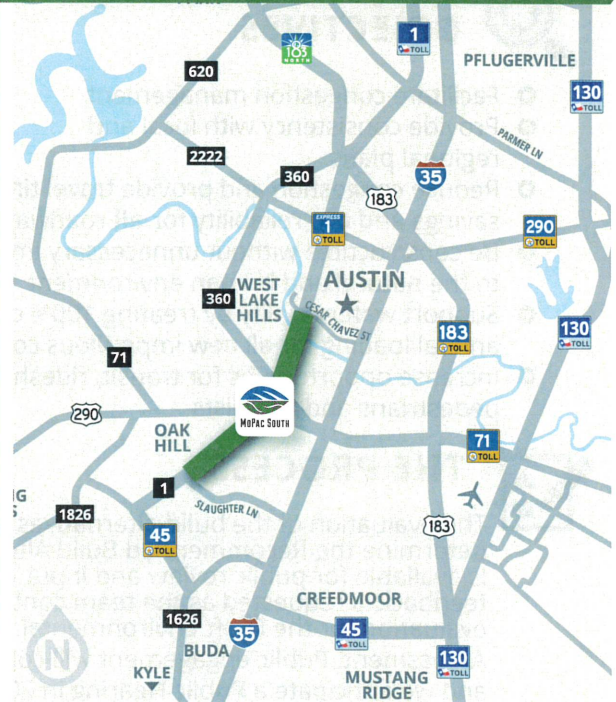


CENTRAL TEXAS REGIONAL  
MOBILITY AUTHORITY

## MOPAC SOUTH ENVIRONMENTAL STUDY

### WHAT PROBLEM ARE WE TRYING TO SOLVE?

The MoPac Expressway south of Cesar Chavez Street is a vital artery in Austin for commuters, neighbors, and visitors. This corridor provides a critical link to downtown Austin and other major highways such as US 290 and Loop 360. With the northern section of the roadway consistently ranked as one of Texas' 100 most congested roadways\*, it attracts nearly 200,000 vehicles per day. Over time, expanding population, as well as residential, retail and commercial development in the corridor, has led to increased traffic congestion. This negatively impacts mobility and quality of life for the traveling public and adjacent neighborhoods.



### PROJECT PURPOSE: WHAT ARE WE TRYING TO DO?

- Provide reliable travel times
- Create a dependable route for transit
- Facilitate reliable emergency response



### PROJECT NEED: WHAT PROBLEMS ARE WE TRYING TO ADDRESS?

- Current and forecasted population, traffic, and employment growth are increasing congestion and travel delays
- Emergency response times are impacted by traffic congestion



### OUR PROPOSED SOLUTION

The Mobility Authority and partners launched an environmental study in 2013 to analyze the corridor and determine the best approach to managing congestion. The study identified a full range of build alternatives, including Transportation Demand Management, additional General-Purpose Lanes, Express Lane(s), High Occupancy Vehicles Lanes (HOV), and Transit Only Lanes Alternatives. Thorough evaluation determined that the Express Lane(s) Alternative was the *Reasonable Build Alternative* because it best met the **purpose** and **need** of the study, offering the following benefits:

- Reliable travel times
- Shortest peak period travel times
- More travel time savings than other Alternatives
- Creates opportunities for transit and ridesharing; bicycle and pedestrian facilities

\*Texas A&M Transportation Institute, 2023, Texas' Most Congested Roadways



MoPac South



CENTRAL TEXAS REGIONAL  
MOBILITY AUTHORITY



## PROJECT GOALS AND OBJECTIVES

- Facilitate congestion management
- Provide consistency with local and regional plans
- Reduce congestion and provide travel time savings and trip reliability for **all** roadway users
- Be constructible without unnecessary impacts to the natural and human environment
- Support water quality by treating 100% of TSS annual loading for all new impervious cover
- Increase opportunities for transit, ridesharing, pedestrians and bicyclists



## THE PROCESS

The evaluation of the build alternatives to determine the Recommended Build Alternative is available for public review and input. Your feedback is requested as the team continues evaluation for the Draft Environmental Assessment. Public engagement will continue and we anticipate a Public Hearing in 2025.

The **No Build** ("Do Nothing") Alternative will be carried forward along with the **2C Express Lanes Build Alternative**.



## 2C EXPRESS LANES ALTERNATIVE BENEFITS

- Tolled and non-tolled improvements
- Auxiliary pavement to improve operational efficiency of general-purpose lanes at entrance and exit ramps and interchanges
- Repaved general-purpose lanes
- Added collector distributor lanes, Texas U-Turns, widened bridges
- Operational efficiency improvements
- Dependable transit route
- Improved emergency response times
- ADA-compliant bicycle and pedestrian facilities



## PUBLIC ENGAGEMENT

### Open House #1: November 2013

Six Alternatives presented for further evaluation

### Open House #2: April 2014

Six Alternatives presented for further evaluation

### Open House #3: February 2015

Six Alternatives presented with results of evaluation matrix and *Express Lane(s) Alternative* recommended for further evaluation

### Open House #4: November 2015

Six different Express Lane(s) operational configuration options for downtown connectivity presented for public evaluation and comment

### Open House #5: November 2021

Express Lane(s) operational configuration options presented for additional input

### Open House #6: November 2024

Recommended Build Alternative presented for additional input



## NEXT STEPS

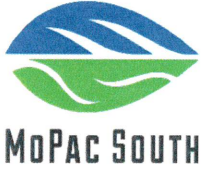
- Draft EA: 2025
- Public Hearing: 2025
- Environmental Decision: 2026



**Stay Informed and Get Involved!**

Share your input at  
[voh.mopacsouth.com](http://voh.mopacsouth.com)

**Questions? Contact us at (512) 342-3299  
or submit an email at [MopacSouth.com/contact/](http://MopacSouth.com/contact/)**



MoPac South Environmental Study  
COMMENT FORM  
PUBLIC MEETING  
Nov. 12, 2024

PLEASE PRINT

NAME: \_\_\_\_\_

ADDRESS: \_\_\_\_\_

PHONE: \_\_\_\_\_

EMAIL: \_\_\_\_\_

REPRESENTING: \_\_\_\_\_

PLEASE CHECK THE APPROPRIATE ITEMS BELOW:

Do you want to sign up for the project's email mailing list?  
 Yes  
 No

Per Texas Transportation Code, §201.811(a)(5): check each of the following boxes that apply to you:  
 I am employed by TxDOT  
 I do business with TxDOT  
 I could benefit monetarily from the project or other item about which I am commenting

COMMENTS:

---



---



---



---



---



---



---



---



---



---



---



---

Written comments submitted by mail must be postmarked by Dec. 29, 2024, and sent to:  
Mail: Central Texas Regional Mobility Authority, Attn: MoPac South, 3300 N IH-35, Suite 300, Austin, TX 78705  
Email: [mopacsouth@ctrma.org](mailto:mopacsouth@ctrma.org)

The environmental review, consultation, and other actions required by applicable Federal environmental laws for this project are being, or have been, carried-out by TxDOT pursuant to 23 U.S.C. 327 and a Memorandum of Understanding dated December 9, 2019 and executed by FHWA and TxDOT.



MoPac South Environmental Study  
Formulario de Comentarios  
Reunión Pública  
12 de noviembre de 2024

EN LETRA MOLDE

Nombre: \_\_\_\_\_

Domicilio: \_\_\_\_\_

Teléfono: \_\_\_\_\_

Correo electrónico: \_\_\_\_\_

Representando a: \_\_\_\_\_

Por favor marque los elementos apropiados a continuación

¿Le gustaría registrarse en la lista del correo electrónico del proyecto?

- Sí
- No

De acuerdo con el Código de Transporte de Texas, §201.811(a)(5): marque cada una de las casillas que se apliquen a usted:

- Soy empleado de TxDOT
- Hago negocios con TxDOT
- Podría beneficiarme económicamente con este proyecto u otro asunto/tema del cual estoy comentando en este formulario

COMENTARIOS

---

---

---

---

---

---

---

---

---

---

---

---

---

---

---

---

---

---

---

---

---

---

---

---

---

---

---

Comentarios por escrito deben ser recibidos o matasellados a más tardar el 29 de diciembre, a:  
Correo Postal: Central Texas Regional Mobility Authority, Attn: MoPac South, 3300 N IH-35, Suite 300, Austin, TX 78705  
Correo Electrónico: [mopacsouth@ctrma.org](mailto:mopacsouth@ctrma.org)