



Decatur
645 South Franklin
Decatur, IL 62521

Dixon
1139 Franklin Grove Rd.
Dixon, IL 61021

Effingham
1703 W. Wernsing Ave.
Effingham, IL 62401

Urbana
3109 Tatman Ct.
Urbana, IL 61802



BeckTechIL.com - 877.227.2325

Brittney Zick
Rochelle Municipal Utilities
Radio Communication System Bid

May 3rd, 2023

Beck Tech is pleased to submit this comprehensive proposal to Rochelle Municipal Utilities for the "Radio Communication System - RFP." Beck Tech meets and/or exceeds all system requirements in this bid. Since 1999, Beck Tech has been an Elite Motorola Solutions Partner authorized to sell and service any of Motorola Solutions branded product lines. In the past 5 years, Motorola Solutions has acquired approximately 55 companies and invested about 6 billion dollars into the safety and security marketplace. Creating the ONE and ONLY ecosystem of products that combines Voice, Data and Analytics into a FULLY INTEGRATED platform.

Beck Tech is 1 of 3 "Badged" partners in the State of Illinois and is 1 of 71 in all of North America (out of 471 Motorola partners). Beck Tech has also been through rigorous training and certification requirements to become a "Badged" Safety Reimagined Partner with Motorola Solutions. This includes in-state and out of state training courses along with in-field implementation of this types of projects. Beck Tech is extremely knowledgeable and experienced in all of Motorola's Safety Reimagined platforms such as Avigilon Alta (Open Path) access control, Concealed Weapons Detection (CWD), Avigilon ACC/ACM, Orchestrate Software, Digital 2-way Radio Systems, Wave PTX and more. Beck Tech has several shops located in Illinois and the Dixon location will be able to handle all service needs in a timely manner. Being both a Public Safety and Commercial Partner with Motorola, allows Beck Tech to serve end user customers 24-7-365 for business-critical needs.

Enclosed is our attached proposal and scope of work. We appreciate the opportunity to bid and look forward to hearing back soon.

Sincerely,

Cameron Lundquist (Senior Account Executive), Brit Miller (CEO and Owner)



MOTOROLA SOLUTIONS

ROCHELLE MUNICIPAL UTILITIES – RADIO COMMUNICATIONS SYSTEM BID



General System Overview

The system shall provide reliable, efficient, radio functionality for **Rochelle Municipal Utilities (RMU)** operational groups and will accommodate RMU's communications requirements between these operational groups (Electric Operations, Public Works, Water & Water Reclamation). The Radio System must include the features, functions, and capabilities as described herein.

Required Features and Functions

The proposed Radio System and protocol shall support the following features and functions:

1. The system and/or user equipment must support digital transmissions on a 6.25 equivalent, 12.5 kHz TDMA channel.
2. The repeater/base station equipment must be able to manage two independent time slots on a single 12.5 kHz frequency using TDMA (Time Division Multiple Access) technology transmissions.
3. All user portable radios must incorporate increased digital battery life over analog by operating in a TDMA digital mode.
4. All user portable radios must include battery technology for automatic maintenance and reconditioning.
5. All radio equipment must support the use of radio subscriber accessories for automatic gain control and noise suppression.
6. The system and/or user equipment must include embedded digital forward error correction technology to increase clarity throughout range.
7. The system and/or user equipment must include embedded software based privacy or scrambling to protect user privacy during communications. This imbedded scrambling must support at least 40-bit protection with multiple keys.
8. All user radios must include Emergency Declaration capability with single button activation. The Emergency Declaration shall provide visual and audible status notification to specified radios. The Vendor's Proposal shall include a detailed description of the Emergency Declaration features and programming options.
9. The system and/or user equipment must include embedded GPS receivers in both the portables and mobile radios.
10. The system and/or user equipment must include embedded text messaging capabilities. Any additional external receivers or accessories shall not be required to receive or send text message information. The user equipment must support unit-to-unit canned and user creatable text messaging capability. The user equipment must support at least 140 scrolling characters. Text messaging shall be supported in a repeater and/or talk around mode.
11. Voice shall take priority over data transmissions on radios transmitting both voice and data information.
12. The system shall provide a software application that allows the system administrator the ability to monitor and control the radio repeaters within the system. The Repeater Diagnostics and Controls Reporting system shall provide the following capabilities:
 - a. Repeater Diagnostics that include enabled-disabled station status, Transmitter power

ROCHELLE MUNICIPAL UTILITIES – RADIO COMMUNICATIONS SYSTEM BID

- status, available channels and RSSI levels.
- b. Repeater Controls that include changing channels, transmitter power, station reset and repeater knockdown.
- c. Repeater Alarm Reporting including Receiver lock failure, transmit lock detect, station overheating, AC Power supply failure, detect & report of failure.

Multi Site Capacity Plus Trunking Capabilities:

1. The system shall support the ability to trunk voice or data traffic to available system channels to maximize efficiency. The Trunking system shall automatically detect a P-T-T as a request to talk, and automatically select and assign a voice path for the communications of the selected talk group. Various entities and work groups must be able to communicate without regard to channel selection, radio site selection or geographic location.
2. The system Trunking protocol shall not require the use of a dedicated control channel, allowing voice/data to simultaneously trunk on all system channels.
3. While in trunk mode, the subscriber access time, defined as PTT to system access, shall not exceed 1000 milliseconds when a trunked voice path is available.
4. The system shall support up to fifteen (15) sites.
5. The system shall support the ability to simultaneously trunk sixteen (16) voice paths per site.
6. The system should be able to support six (6) additional data revert paths for additional data traffic needs per site if needed.
7. The system shall be capable of supporting data communications that include GPS location services, text messaging, and a data interface for other customer specific and supplied applications including telemetry, system performance management, VoIP dispatch, AVL, work-order management, and email connectivity.
8. In the event of a repeater failure, the system shall continue to maintain its trunked operation, regardless of which repeater fails.
9. In the event of frequency interference, the system shall continue to maintain its trunked operation, regardless of the channel being interfered with.
10. The system shall allow the ability to designate whether a talk group is wide area or local, by which wide area talk groups are repeated across sites and local area talk groups are repeated only at the site in which they are transmitted.
11. The system shall support the ability to restrict communication access to certain sites.
12. The system shall support site roaming without user intervention.

System Design Considerations

The RMU system must be a MOTOTRBO™ Capacity Plus multisite trunk system, or comparable, that provides both portable and mobile coverage across RMU's complete service area. The system was evaluated using the possible Water Tower locations (below) to maximize coverage within the RMU service area. There were 3 sites in the initial evaluation (Water Towers for wells 4, 11 and 12). Due to the system being inbound limited, we evaluated the inbound for Portable On-Street coverage using 10dB of attenuation (to simulate in-building losses). It was found that Water Towers for wells 4 and 11 were the most dominant and provided the maximum on-street portable coverage within the RMU service area.

ROCHELLE MUNICIPAL UTILITIES – RADIO COMMUNICATIONS SYSTEM BID

Site Name:	Latitude:	Longitude:	Antenna Height (ft)
Water Tower for Well 11	41.94798	-89.07987	150
Water Tower for Well 4	41.92043	-89.06905	150
Water Tower for Well 12	41.88425	-89.02267	200

Table 1: Water Tower Sites for max coverage of RMU Service Area

General Equipment Summary:

Water Tower for wells 4 and 11 meet the 95% Covered area reliability with a DAQ 3.4 when the following infrastructure is used. Any deviation from these parameters will alter the coverage maps and the reliability.

Infrastructure:

- **Water Tower for well 4** – SLR 8000 repeater, 100W; 1dB of external noise (450-470 MHz).
- **Water Tower for well 11** – SLR 5700 repeater, 50W; 1dB of external noise (450-470 MHz).
- 6dB Gain Omni-Directional Antenna (used CC450-06) to model coverage
- Tx/Rx Mainline – 7/8” transmission line (200’) per site
- Losses assumed for 8’ of ½” LDF antenna jumpers, connectors, lightning arrestors and 30’ of ½” LDF room jumpers.
- Single channel hybrid duplexer (DSBCDUP02) with active gain stage on the Rx path to help improve inbound coverage.

Subscribers:

Mobiles:

- XPR 5550e mobiles, 25W.
- Tx/Rx antenna at car roof center.
- 1/4-wave Antenna.
- Losses assumed for 14’ of cable.

Portables:

- Motorola ION portables, 4W.
- Tx/Rx at hip (3.3’) in belt case with Remote Speaker Mic (RSM).
- UHF Stubby Wideband Antenna.

ROCHELLE MUNICIPAL UTILITIES – RADIO COMMUNICATIONS SYSTEM BID

Emergency Services Interoperability

Rochelle Municipal Utilities (RMU) would also like to interoperate with the local Police Department and Emergency Services. This would require agreements from the local police department to utilize a control station at the dispatch center in order to integrate in the Capacity Plus system to the console. This would allow if required, the ability to patch the two systems together for Emergency notification and onsite coordination with RMU.

GPS Tracking of Radios

Rochelle Municipal Utilities (RMU) would like to be able to track their portables and mobiles in the field via GPS. This would require a 3rd party GPS application to be able to show the vehicles and individuals. They would also like the ability to have an Emergency declaration be identified on a map and be able to communicate with that individual immediately.

GW3-TRBO®

GW3-TRBO® is an integrated solution that allows centralized management of all system-wide activity, sends critical notifications, and archives data for forensic reporting on Multi-Site Capacity Plus systems.



GW3-TRBO Network Management Software

GW3-TRBO® is a Windows-based software solution that monitors and proactively manages all data collected from a Motorola MOTOTRBO® Capacity Plus Multi-Site Radio System. RMU's System Administrators are able to maintain constant visibility into how their radio system is performing which helps them make more informed and data-driven decisions regarding their radio resources. GW3-TRBO helps to ensure system availability, optimize system performance and maximize system investment by enabling users to monitor live traffic, report on system and radio activity, as well as manage system resources down to the radio level.

Identified RF Equipment:

Rochelle Municipal Utilities (RMU) is looking for the following equipment to be quote, including the interoperability with Emergency Services, GPS Tracking and GW3-TRBO Network Management Software. These are not specified below, but should be included in the final proposals to RMU.

ROCHELLE MUNICIPAL UTILITIES – RADIO COMMUNICATIONS SYSTEM BID

Model:	Qty:	Description:	Price:
Water Tower for Well 4:			
T8319	2	SLR 8000 Base Radio Repeater, 1 - 100W	\$7,728
CA02962AA	2	UHF (400-470 MHz)	\$7,133.56
HKVN4110	2	Linked Capacity Plus New System Deployment	\$8,533.36
HKVN4055	1	Enhanced Scheduled GPS License	\$863
DSBCDUP02	1	Two Channel Hybrid Duplexer with receiver multi-coupler.	\$4,657.5
DS4C06F36U-D	1	5.9dBd UHF (450-480 MHz) Exposed Dipole Omni Antenna w/ NF	\$2,800
DSWKU	3	Universal Weatherproofing Kit	\$130.5
DSAT012J50	8	1/2" Transmission Line, 50 Ohm, Jumpers Antenna Side	\$17.6
DSDMA01250B	2	7/16 DIN Male for 1/2" coax (Use with CT01250AIO-2)	\$70.5
DSAT078J50	400	7/8" Transmission Line, 50 Ohm, Black Polyethylene Jacket per ft	\$2,780
DSDFA07850B	2	7/16 DIN Female for 7/8" coax (Use with CT01250AIO-2)	\$100.5
DSAT012J50	30	1/2" Transmission Line, 50 Ohm, Jumpers Equipment Side	\$66
DSDMA01250B	2	7/16 DIN Female for 1/2" coax (Use with CT01250AIO-2)	\$70.5
DSGKS78AC	6	GK-S78AC, Std Ground Kit for 7/8" Aircell Coax	\$294
DSSHU78	5	SH-U78, Universal Snap-In Hanger for 7/8" Aircell Coax, Pkg of 10	\$260
Water Tower for Well 11:			
AAR10QCGANQ1AN	2	SLR 5700 UHF Base Radio Repeater, 1 - 50W	\$6,408
HKVN4099	2	Linked Capacity Plus New System Deployment	\$8,533.36
HKVN4055	1	Enhanced Scheduled GPS License	\$863
DSBCDUP02	1	Two Channel Hybrid Duplexer with receiver multi-coupler.	\$4,657.5
DS4C06F36U-D	1	5.9dBd UHF (450-480 MHz) Exposed Dipole Omni Antenna w/ NF	\$2,800
DSWKU	3	Universal Weatherproofing Kit	\$130.5
DSAT012J50	8	1/2" Transmission Line, 50 Ohm, Jumpers Antenna Side	\$17.6
DSDMA01250B	2	7/16 DIN Male for 1/2" coax (Use with CT01250AIO-2)	\$70.5
DSAT078J50	400	7/8" Transmission Line, 50 Ohm, Black Polyethylene Jacket per ft	\$2,780
DSDFA07850B	2	7/16 DIN Female for 7/8" coax (Use with CT01250AIO-2)	\$100.5
DSAT012J50	30	1/2" Transmission Line, 50 Ohm, Jumpers Equipment Side	\$66
DSDMA01250B	2	7/16 DIN Female for 1/2" coax (Use with CT01250AIO-2)	\$70.5
DSGKS78AC	6	GK-S78AC, Std Ground Kit for 7/8" Aircell Coax	\$294
DSSHU78	5	SH-U78, Universal Snap-In Hanger for 7/8" Aircell Coax, Pkg of 10	\$260
Subscribers:			
ION Portable:			
AAH90ZDU9RH1AN	35	MOTOTRBO ION UHF 4W, LTE, CBRS, Wi-Fi & Bluetooth	\$81,550
STDBAT0734	35	Standard Battery - IMPRES Li-Ion IP68 2820T mAh (PMNN4803A)	N/C
		Standard Charger - IMPRES Single Unit Charger, US Plug (PMPN4524)	N/C
STDCHG0734	35		N/C
QA08146	35	UHF Stubby 6cm Antenna, 440-490MHz (AN000351A01)	N/C
STDBOX0734	35	Standard Model Box	N/C
STDBLT0734	35	Standard Carry Holster (PMLN8126)	N/C
Optional Remote Speaker Microphones:			
QA08150	15	RM780 GCAI Remote Speaker Microphone (PMMN4128)	\$2,952
QA08151	15	Operation Critical Wireless RSM (PMMN4127)	\$3,750
QA08152	15	EP910W Operation Critical Wireless Earpiece w/ PTT (PMLN8123)	\$1,215
XPR 3550e Portable:			

ROCHELLE MUNICIPAL UTILITIES – RADIO COMMUNICATIONS SYSTEM BID

AAH02RDH9VA1AN	13	XPR 3500e 403-512 4W Limited Keypad, Wi-Fi Optional	\$9,731.15
QA08325	13	IMPRES Li-Ion, 2450 mAh Battery IP68 with Belt Clip (PMNN4544)	N/C
STDCHG0867	13	Standard Charger - IMPRES Single Unit Charger CEC Compliant (PMPN4576A)	N/C
QA02304	13	UHF Slim Whip Antenna, 403-512 MHz (PMAE4079)	N/C
STDBOX0867	13	Standard Model Box	N/C
HKVN4414	13	MOTOTRBO License Capacity Plus (Multi-Site)	\$1,079
Optional Remote Speaker Microphones:			
QA02772	13	IMPRES Noise-Cancelling RSM w/3.5mm Audio Jack (PMMN4071)	\$1488.24
QA02773	-	IMPRES Windporting RSM w/3.5mm Audio Jack (PMMN4073)	
XPR 5550e Mobile:			
AAM28QNN9RA1AN	5	XPR 5550e UHF Mobile Radio with Bluetooth/GPS/WiFi	\$5,676.63
STMIC0511	5	Standard Compact Microphone (RMN5052)	N/C
STDBKT0511	5	Standard Mounting Bracket (Low Profile - RLN6469)	N/C
STDCBL0511	5	Standard Power Cable (HKN4191)	N/C
STDBLK0511	5	Standard Model Box	N/C
Teldio GPS:			
Y-4400060	1	TruFleet - Enterprise AVL License	\$8,125
Y-4400061	35	1-99 Trufleet Subscriber Licenses	\$2,625
Y-4400077	35	Basic Reverse Geocoding for US map data	\$262.5
T-S0005	1	Standard Desktop Server	\$1,375
T-000551	1	Teldio Care (1 Year)	\$0
T-000009	6	System Config. & Remote Install Support	\$1,800
GW3-TRBO:			
GG-L3619A	1	GW3-TRBO Network Management Host Software for Capacity Plus	\$12,650
GG-TT05276AA	2	Additional Site / Network Input Module	\$3,450
GG-DDN1537A	1	GW3-TRBO Host Computer	\$2,625
GG-ESA1	1	Additional Year Essential Service Agreement	\$2,656.5
GG-RMT	1	REMOTE ONLY INSTALLATION and TRAINING	\$3,750
GG-SHIP	1	Shipping	\$156.25
MISC HARDWARE:			
Radio Programming	53	Programming of all Radios	\$2,120
Repeater Programming	4	Programming of all Repeaters	\$1,600
Code Plug Generation	1	Building Code Plug for all new Radios and Repeater	\$1,000
HAE4003A	5	"Urban UHF 1/4-Wave Through-Hole Mount Antenna, 450-470 MHz"	\$134.4
572268	5	Samlex SEC 1212-MT- Power Supply	\$1005.35
BTMAINT-MOBILE	5	Beck Tech Mobile Maintenance Service (5 Year)	\$600
BTMAINT-PORTBALE	48	Beck Tech Portable Maintenance Service (5 Year)	\$4,320
BTMAINT-REPEATER	4	BECK TECH REPEATER Maintenance Service (5 Year)	\$2,160
POLYPHASER	4		\$1,000
MISC	1	MISC Hardware and Equipment	\$1,464

Bid Due Date 5/3/2023 11AM CST



Bid Addendum Number 1
Radio Communications System Bid
 Addendum Date: April 12, 2023

The original Bid Documents for the Radio Communications System Bid are amended as noted in Bid Addendum Number 1. The Addendum shall become part of the Bid Documents.

Item 1: CHANGES TO THE IDENTIFIED RF EQUIPMENT

Changes to the Identified RF Equipment are highlighted in yellow for Water Tower for Well 4 and Water Tower for Well 11 as seen below.

Model:	Qty:	Description:	Price:
Water Tower for Well 4:			
T8319	2	SLR 8000 Base Radio Repeater, 1 - 100W	
CA02962AA	2	UHF (400-470 MHz)	
HKVN4110	2	Linked Capacity Plus New System Deployment	
HKVN4055	1	Enhanced Scheduled GPS License	
DSBCDUP01BA	1	Two Channel Hybrid Duplexer with receiver multi-coupler.	
DB408-B	1	5.9dBd UHF (450-480 MHz) Exposed Dipole Omni Antenna w/ NF	
DSWKU	3	Universal Weatherproofing Kit	
DSAT012J50	8	1/2" Transmission Line,50 Ohm, Jumpers Antenna Side	
DSDMA01250B	2	7/16 DIN Male for 1/2" coax (Use with CT01250AIO-2)	
DSAT078J50	400	7/8" Transmission Line,50 Ohm, Black Polyetholene Jacket per ft	
DSDFA07850B	2	7/16 DIN Female for 7/8" coax (Use with CT01250AIO-2)	
DSAT012J50	30	1/2" Transmission Line,50 Ohm, Jumpers Equipment Side	
DSDMA01250B	2	7/16 DIN Female for 1/2" coax (Use with CT01250AIO-2)	
DSGKS78AC	6	GK-S78AC, Std Ground Kit for 7/8" Aircell Coax	
DSSHU78	5	SH-U78, Universal Snap-In Hanger for 7/8" Aircell Coax, Pkg of 10	
Water Tower for Well 11:			
AAR10QCQGANQ1AN	2	SLR 5700 UHF Base Radio Repeater, 1 - 50W	
HKVN4099	2	Linked Capacity Plus New System Deployment	
HKVN4055	1	Enhanced Scheduled GPS License	
DSBCDUP01BA	1	Two Channel Hybrid Duplexer with receiver multi-coupler.	
DB408-B	1	5.9dBd UHF (450-480 MHz) Exposed Dipole Omni Antenna w/ NF	
DSWKU	3	Universal Weatherproofing Kit	
DSAT012J50	8	1/2" Transmission Line,50 Ohm, Jumpers Antenna Side	
DSDMA01250B	2	7/16 DIN Male for 1/2" coax (Use with CT01250AIO-2)	
DSAT078J50	400	7/8" Transmission Line,50 Ohm, Black Polyetholene Jacket per ft	
DFA07850B	2	7/16 DIN Female for 7/8" coax (Use with CT01250AIO-2)	
DSAT012J50	30	1/2" Transmission Line,50 Ohm, Jumpers Equipment Side	
DSDMA01250B	2	7/16 DIN Female for 1/2" coax (Use with CT01250AIO-2)	
DSGKS78AC	6	GK-S78AC, Std Ground Kit for 7/8" Aircell Coax	
DSSHU78	5	SH-U78, Universal Snap-In Hanger for 7/8" Aircell Coax, Pkg of 10	

Bid Due Date 5/3/2023 11AM CST

Bidders must acknowledge this addendum by signing below and attaching the signed addendum to the Bid Document when submitting Proposals.

Company Name BECKTECH

Contact Person BRET Miller CEO/President, Cameron Lundquist

Signature Bret Miller, Cameron Lundquist

Date May 3rd/2023

Brittney Zick

City of Rochelle, HR Risk and Safety Coordinator

Rochelle Municipal Utilities
Mototrbo Radio Upgrades
Linked Capacity Plus- Scope of Work

5/3/2023

Beck Tech is responsible for the following:

- Work with RMU IT group on the radio network set up. This includes IP schemes and network design.
- Apply for the new UHF frequency pairs through the FCC
- Receive and unbox equipment in Beck Tech shop for assembly of system
- Put together racks
- Rack Mount all new repeater and combining equipment
- Tune the combiners
- Create all jumper cables from repeaters to combiners from combiners to multi-couplers
- IP address and program routers
- Create new repeater code plugs and license repeaters with LCP and Teldio GPS
- Test System in shop and let it run for 24-48 hours before install to ensure system works
- Connect antenna lines up to the combiners
- Power on repeater equipment
- Re-test antenna and line
- Test coverage with a couple of portables and mobiles to ensure coverage for RMU service area
- Distribute radios and provide RMU training on the new radios
 - See radio programming scope of work for more information
- Test GPS tracking for all radios in RMU service area to ensure accurate GPS location for radios
 - This includes programming MOTOTRBO ION and XPR 5550e with Teldio GPS tracking
 - Program Teldio tracking software for all data repeaters

Radio Programming Scope of Work:

- Develop new code plugs for XPR 3500e's, XPR 5550e's, MOTOTRBO ION
 - This includes a meeting/discussion on talk groups (channels), zone layouts, button mapping and feature set selections
 - RMU will test new code plugs with Beck Tech to ensure everything is correct. Beck Tech will come onsite or customer can come to shop to test. Once testing has been finalized, RMU will sign on final code plugs. Any changed to code plugs after start of onsite install could result in extra charges
 - This includes testing Teldio GPS tracking software for the radios
 - Test GPS in RMU service area
 - Test to receive notification and alerts
- Beck Tech will test at least 2-3 radios of each model to ensure system is working properly
- Training of the new radios will be complimentary

RMU is responsible for the following:

- 110v power outlets at both water tower sites (minimum of 2 per RF site)
- Any battery backup/generator back up at both water tower sites
- Any fiber switches, Network switches and programming of those ports to make the system work
- Wide Area internet connection between both sites
 - Includes broadband, fiber connectivity or wireless microwave point to point links
 - Without internet connectivity the system will not work
 - Provide static IPs for each site
- Any tower crew climbing needed for both water tower sites
 - This includes any additional welding (costs) needed at top of water towers to mount the new antennas
- Any man lifts that may be needed to run cable or mount antennas
- Radio coverage issues after install. Beck Tech cannot guarantee 100% coverage especially in basements, tunnels, metal/brick buildings. If there are areas that are still having coverage issues after the system has been deployed, Beck Tech will work with RMU on a case by case basis to help resolve any issues Any solutions needed for this will be quotes separately and will not be provided free of charge
- Providing radios for RMU on a timely basis. Any unexpected (LONG) delays in getting radios back for reprogramming could lead to additional labor costs

All work to be performed Mon-Friday 8am-5pm. Special accommodation can be made ahead of time for nights and weekends. Typical nights, weekends and holidays are charges overtime fees. Beck Tech Maintenance plans are provided on our bid. Beck Tech standard project terms are 50% down upon PO, 40% upon receipt of equipment/start of installation, final 10% upon acceptance of the system. Other terms can be negotiated as needed. RMU accepts this scope of work upon PO and understand changes in this scope of work could lead to possible change orders to the project.

Beck Tech
Radio Communications System Bid
5-3-2023

Integrators/ Authorized Resellers and Service Response:

Beck Tech has included proof of being an Authorized Motorola Solutions Reseller and “Badged” Safety Reimagined partner. Beck Tech’s Dixon, Illinois office is located within 25 miles of Rochelle, Illinois. Our lead technician, Matt Bolhous, lives within the city limits of Rochelle. This allows Beck Tech to provide excellent customer service if awarded the bid. Thus, meeting the required service specifications in the RFP bid.

Since we also service many 911 Dispatch centers in and around the Dixon area, we can provide 24-7-365 customer support. We have included that option in our bid to provide 24-7-365 maintenance support services for the Linked Capacity Plus Motorola Radio system. GW3-Trbo and Teldio GPS maintenance have also been included for the first year (only). Additional years of coverage can be provided for these third-party applications once the bid has been awarded. Maintenance is not a requirement from Beck Tech but highly recommended by Beck Tech, Motorola Solutions and the third-party application companies.

Fw: The 2023 Safety Reimagined Badged Partner Program!

Eric Smith <esmith@becktechil.com>
To: Eric Smith <barbeck.eric@gmail.com>

Wed, May 3, 2023 at 9:02 AM

Eric Smith
Vice President of Sales
BECK TECH a BARBECK Company
217-853-6610 cell
<https://www.becktechil.com/unifiedteam/>

Motorola Solutions Summit Club Winner



From: Brittney Morici <brilltney.morici@motorolasolutions.com>
Sent: Wednesday, April 26, 2023 4:00 PM
Subject: The 2023 Safety Reimagined Badged Partner Program!



2023 PARTNER PROGRAM GUIDE



Dear
Valued Safety Reimagined Badged Partner,

We
are excited and honored to have you in our
2023 Safety Reimagined Badged Partner
Program.

As
a Safety Reimagined Badged Partner, your
company will have access to all of the
exclusive benefits of this program unique to
any other partner type, including:



- Safety Reimagined Partner badge for competitive differentiation

This badge can be found in the Marketing Center, available by clicking on [Enablement Tools](#) on the Marketing Center page on Partner Central. Once in Marketing Center, click on [Asset Library](#) and select [Logos](#).

The Safety Reimagined badge can be downloaded as a PNG file. You can use this badge on websites, in collateral, on business cards, and in requests for proposals (RFPs).

- System integration configuration assistance

- Access to Motorola Solutions / Avigilon sales engineering design resources and support

- Orchestrate activation support with

our project manager and activation team

- Exclusive sixteen hours of remote advanced consultation with our system technologists

- Onsite system technologist services at a discounted rate

- Safety Reimagined leads from our sales team

- Access to exclusive product discounts, rebates and Dealer Sales Rep Incentives

Take a look at the attached 2023 Safety Reimagined Badged Partner Program Guide PDF. To access this deck and additional information on Safety Reimagined, please check out the [Safety Reimagined page](#) on Partner Central.

To retain your Safety Reimagined Badged Partner status throughout 2023, you must stay current on the [Learning Path](#) courses deemed credited for Safety Reimagined.

If you have any questions, please feel free to reach out to the Safety Reimagined team members or your Motorola Solutions Channel Sales Executive.

Here's to a successful, Orchestrated, year ahead!

Best,

Safety Reimagined Team
Motorola Solutions, Inc.

Photo: iStock.com/Photo123456789

Follow Us:     

Brittney Morici
Safety Reimagined Ecosystem Solutions
Partner Program Lead & Channel Enablement
Motorola Solutions, Inc.

www.motorolasolutions.com
M: +1.614.306.0750
E: Brittney.Morici@motorolasolutions.com



For more information on how and why we collect your personal information, please visit our [Privacy Policy](#).

[Policy](#).

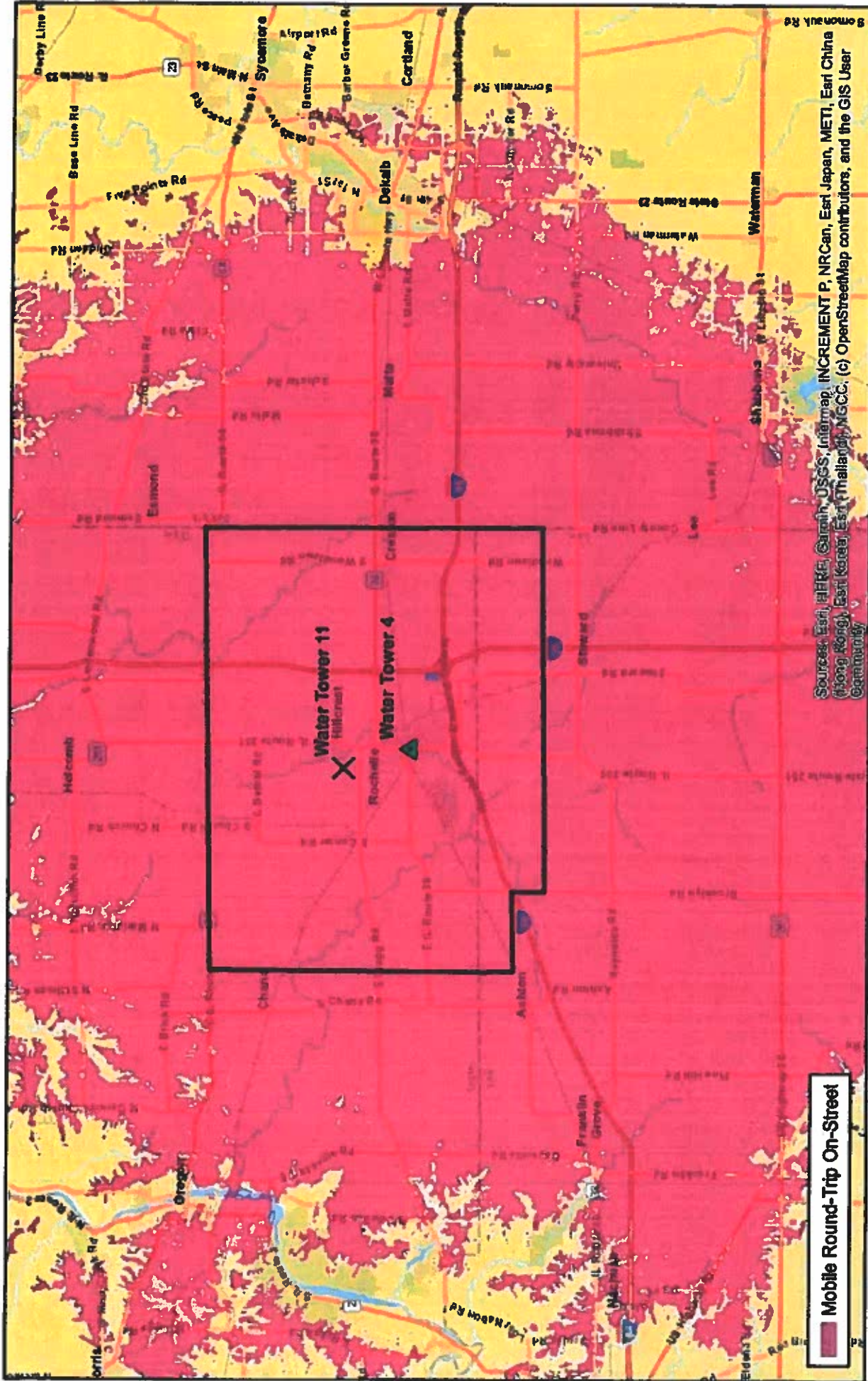


MOTOROLA SOLUTIONS

City of Rochelle, IL

2-Site Standalone MotoTRBO UHF R2 System -- Water Tower 4
Shaded Area Represents 95% Covered Area Reliability at DAQ 3.4

This map is a coverage estimate predicting expected coverage to be used for informational purposes only based on the information provided and in no way constitutes a coverage guarantee. Motorola is not responsible for any deviation between this estimate and actual system performance.



Water Tower 11
Water Tower 4

IL Rochelle
231517168d.1.Design 8
W00162, CCOTLAB-904

Mobile Configuration:
XPR 5550e 25W Tx/Rx on Car Roof Center
UHF 1/4-wave

Sources: Esri, HERE, Garmin, USGS, Intermap, INCREMENT P, NRCan, Esri Japan, METI, Esri China (Hong Kong), Esri Korea, Esri (Thailand), NGCC, (c) OpenStreetMap contributors, and the GIS User Community

This map is intended solely for the equipment configuration stated above.
Coverage can vary significantly if different configurations are used.

Feb 09, 2023
Hydra Stratus 3.0.2.0

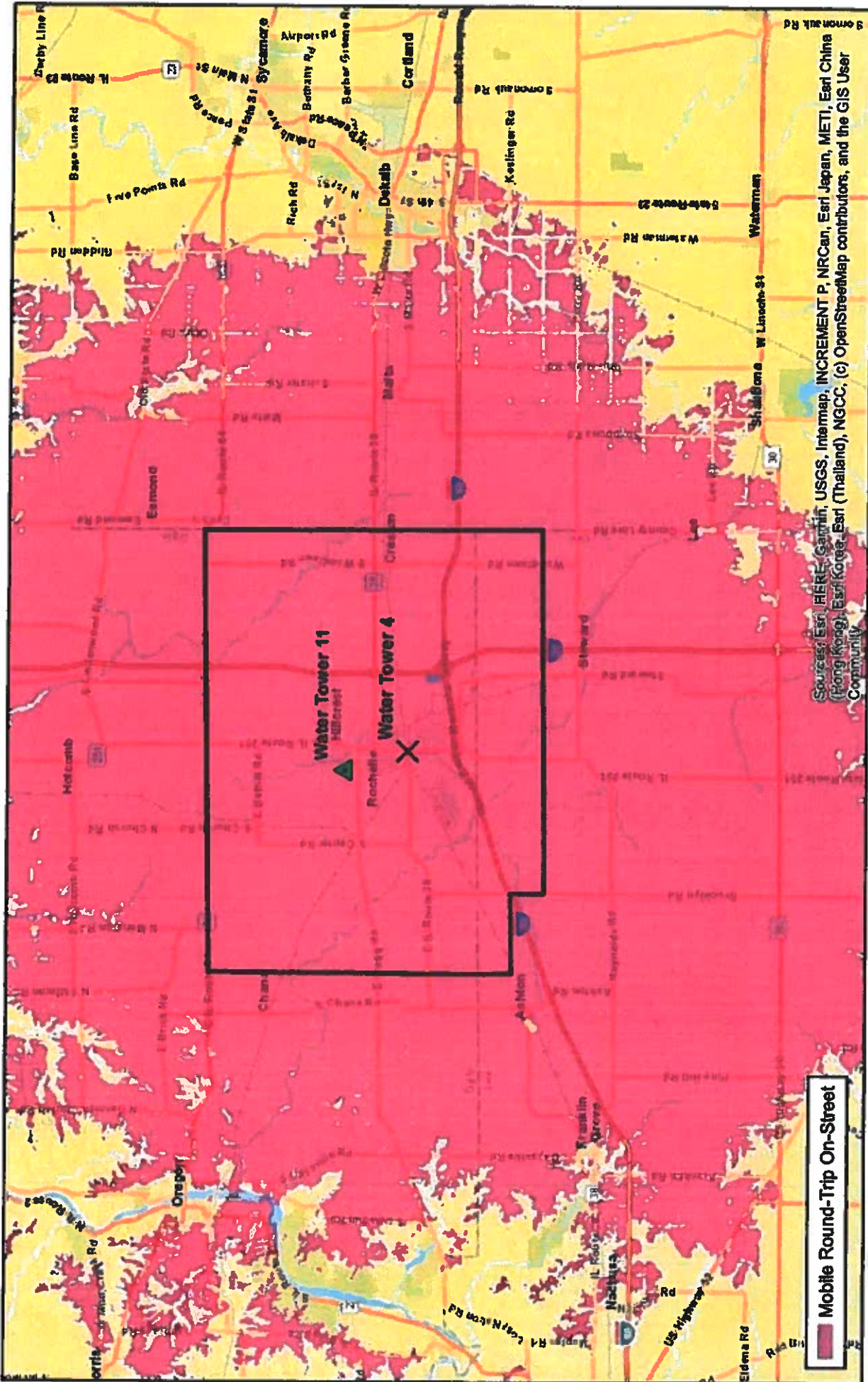


MOTOROLA SOLUTIONS

City of Rochelle, IL

2-Site Standalone MotoTRBO UHF R2 System – Water Tower 11
Shaded Area Represents 95% Covered Area Reliability at DAQ 3.4

This map is a coverage estimate predicting expected coverage to be used for informational purposes only based on the information provided and in no way constitutes a coverage guarantee. Motorola is not responsible for any deviation between this estimate and actual system performance.



0 2 4 6 Miles
1 in = 4 miles

Mobile Configuration:
XPR 5550e 25W Tx/Rx on Car Roof Center
UHF 1/4-wave

Feb 09, 2023
Hydra Stratus 3.0.2.0

This map is intended solely for the equipment configuration stated above.
Coverage can vary significantly if different configurations are used.

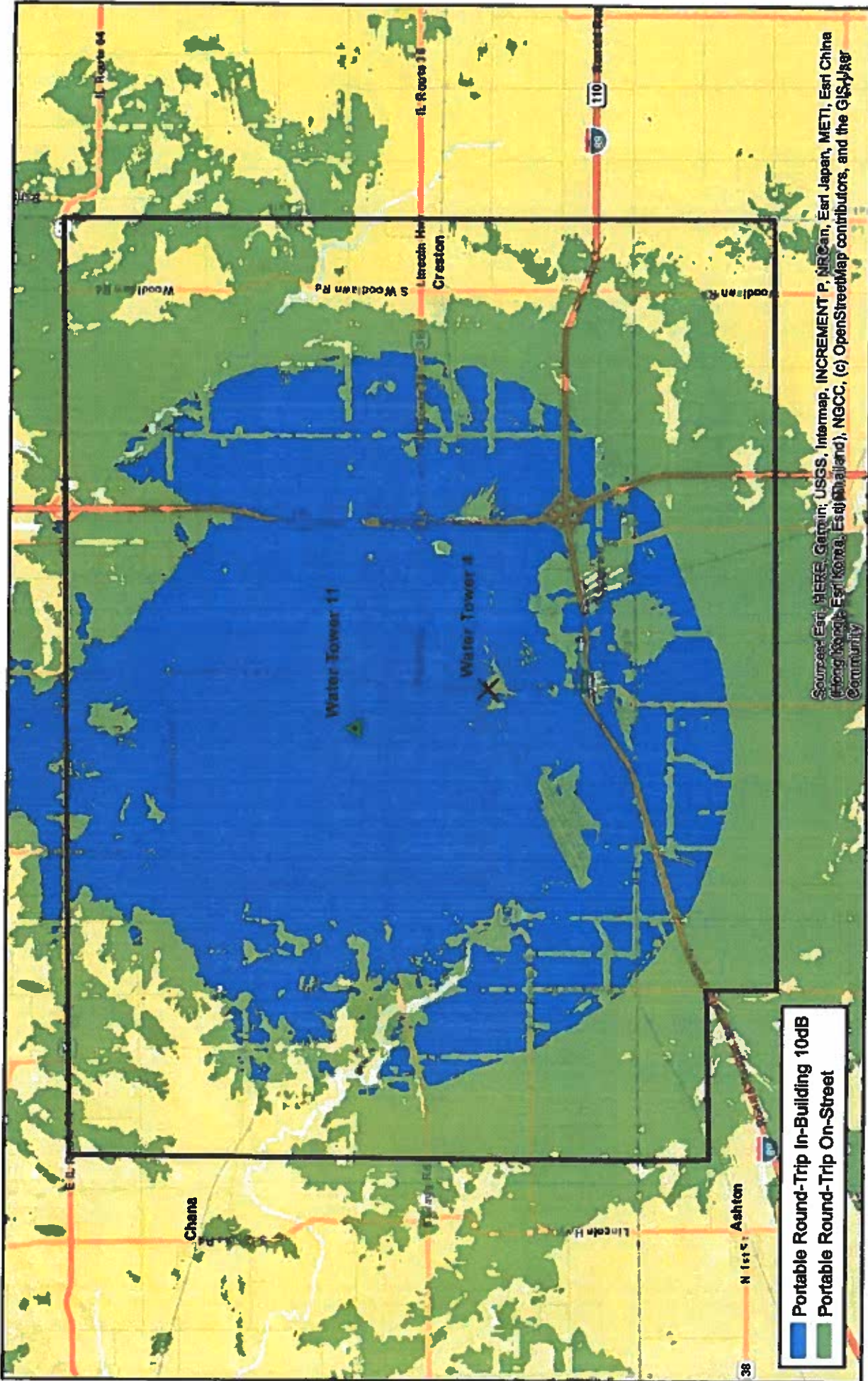
L. Rochelle
2316171696.1.Design 6
W00152_CCDTLAB-804



City of Rochelle, IL

2-Site Standalone MotoTRBO UHF R2 System -- Water Tower 11
Shaded Area Represents 95% Covered Area Reliability at DAQ 3.4

This map is a coverage estimate predicting expected coverage to be used for informational purposes only based on the information provided and in no way constitutes a coverage guarantee. Motorola is not responsible for any deviation between this estimate and actual system performance.



Portable Round-Trip In-Building 10dB
 Portable Round-Trip On-Street

0 0.9 1.8 2.7 Miles
 1 in = 2 miles

Portable Configuration:
 R7 4W Tx/Rx at hip using Belt Clip with Remote Speaker Mic
 UHF stubby wideband antenna (AN000348A01)

Sources: Esri, HERE, Garmin, USGS, Intermap, INCREMENT P, NRCan, Esri Japan, METI, Esri China (Hong Kong), Esri Korea, Esri (Shanghai), NGCC, (c) OpenStreetMap contributors, and the GIS User Community

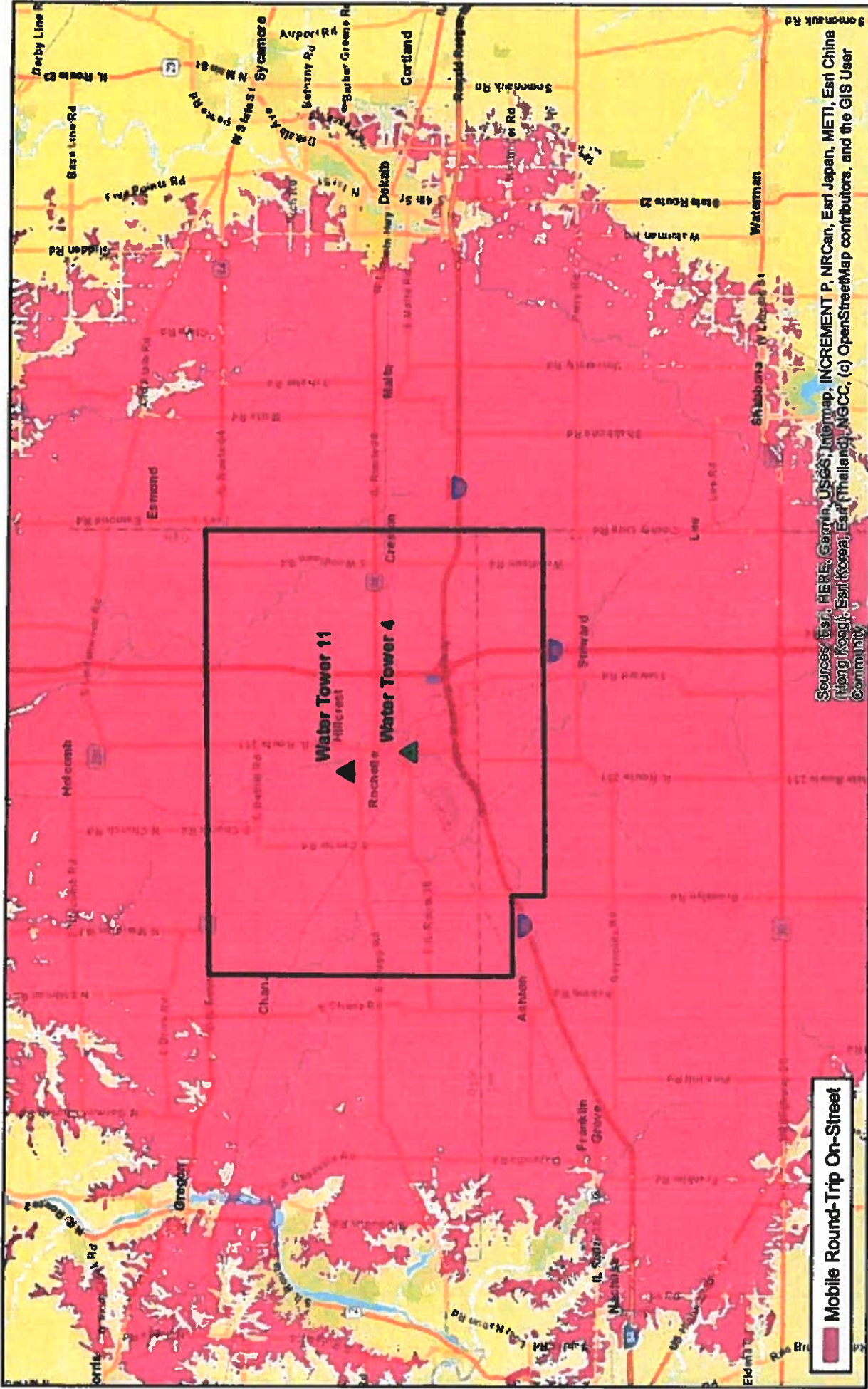
This map is intended solely for the equipment configuration stated above.
 Coverage can vary significantly if different configurations are used.



City of Rochelle, IL

2-Site Standalone MotoTRBO UHF R2 System
Shaded Area Represents 95% Covered Area Reliability at DAQ 3.4

This map is a coverage estimate predicting expected coverage to be used for informational purposes only based on the information provided and in no way constitutes a coverage guarantee. Motorola is not responsible for any deviation between this estimate and actual system performance.



Mobile Round-Trip On-Street

0 2 4 6 Miles
1 in = 4 miles

Mobile Configuration:
XPR 5550e 25W Tx/Rx on Car Roof Center
UHF 1/4-wave

Sources: Esri, HERE, Garmin, USGS, Intermap, INCREMENT P, NRCan, Esri Japan, METI, Esri China (Hong Kong), Esri Korea, Esri (Thailand), NGCC, (c) OpenStreetMap contributors, and the GIS User Community

Il. Rochelle
2315171688.1 Design 8
W00152, CCOTLAB-804

This map is intended solely for the equipment configuration stated above.
Coverage can vary significantly if different configurations are used.

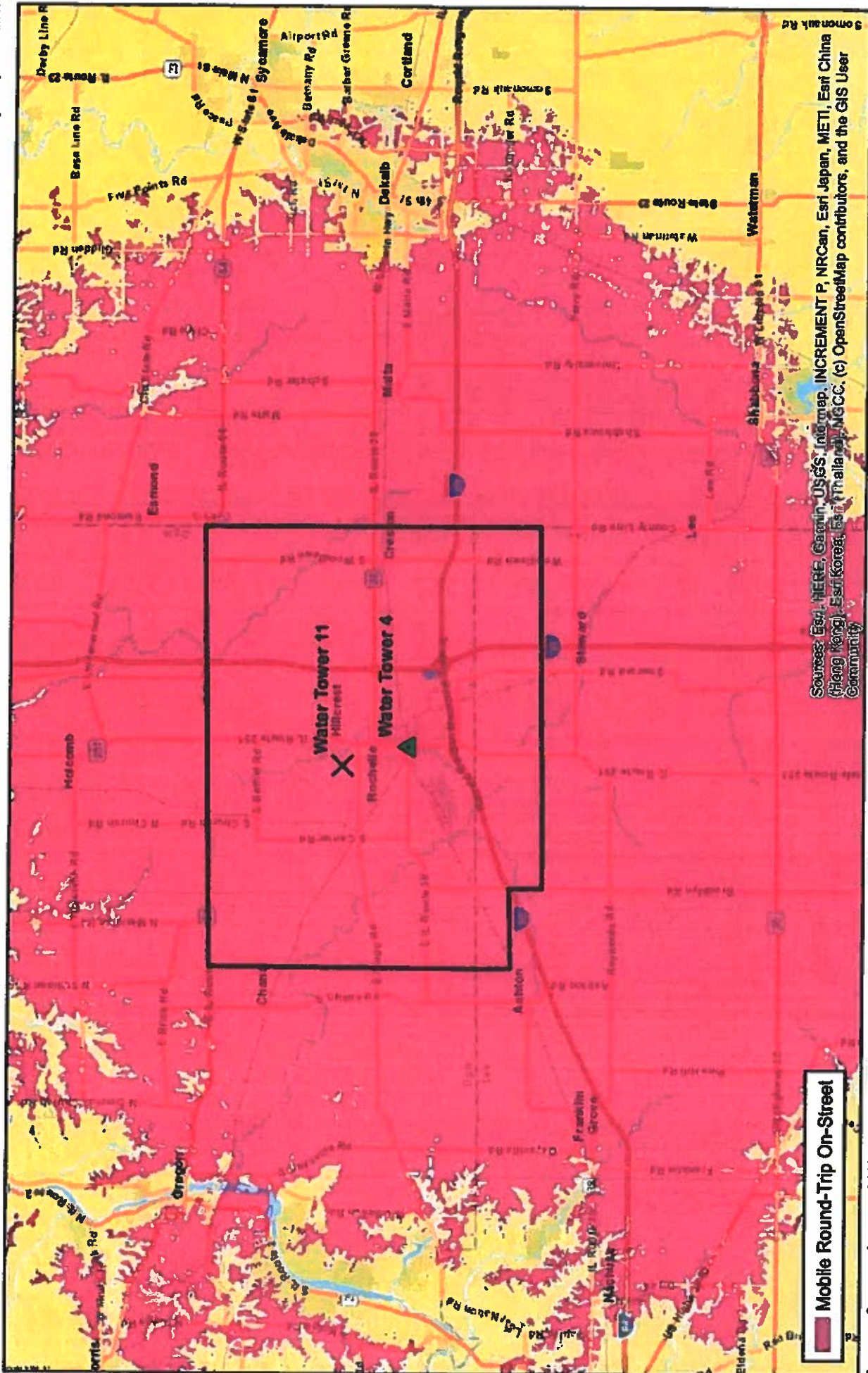


MOTOROLA SOLUTIONS

City of Rochelle, IL

2-Site Standalone MotoTRBO UHF R2 System – Water Tower 4
Shaded Area Represents 95% Covered Area Reliability at DAQ 3.4

This map is a coverage estimate predicting expected coverage to be used for informational purposes only based on the information provided and in no way constitutes a coverage guarantee. Motorola is not responsible for any deviation between this estimate and actual system performance.



Mobile Round-Trip On-Street

0 2 4 6 Miles
1 in = 4 miles

Mobile Configuration:
XPR 5550e 25W Tx/Rx on Car Roof Center
UHF 1/4-wave

Sources: Esri, HERE, Garmin, USGS, Intel Map, INCREMENT P, NRCan, Esri Japan, METI, Esri China (Hong Kong), Esri Korea, Esri Thailand, MGCC, (c) OpenStreetMap contributors, and the GIS User Community

IL_Rochelle
2315171696.1.Design 8
W00152, CCGTLAB-804

This map is intended solely for the equipment configuration stated above.
Coverage can vary significantly if different configurations are used.

Feb 09, 2023
Hydra Stratus 3.0.2.0

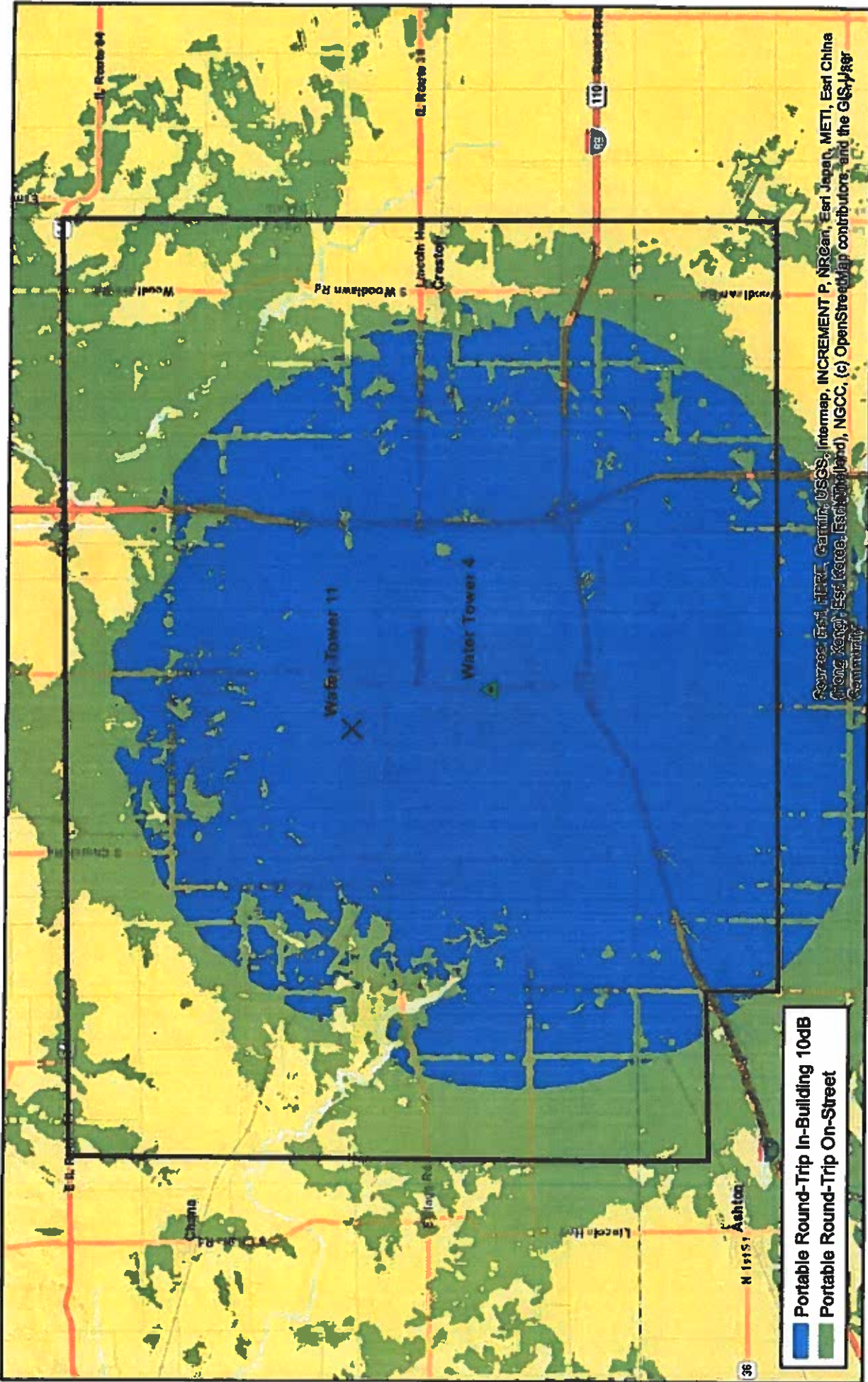


MOTOROLA SOLUTIONS

City of Rochelle, IL

2-Site Standalone MotoTRBO UHF R2 System - Water Tower 4
Shaded Area Represents 95% Covered Area Reliability at DAQ 3.4

This map is a coverage estimate predicting expected coverage to be used for informational purposes only based on the information provided and in no way constitutes a coverage guarantee. Motorola is not responsible for any deviation between this estimate and actual system performance.



Source: Esri, HERE, Garmin, USGS, Intermap, INCREMENT P, NRCan, Esri Japan, METI, Esri China (Hong Kong), Esri Korea, Esri (Thailand), NGCC, (c) OpenStreetMap contributors, and the GIS User Community

Portable Configuration:
R7 4W Tx/Rx at hip using Belt Clip with Remote Speaker Mic
UHF stubby wideband antenna (AN000348A01)

IL Rochelle
231517686.1.Design 8
W00152, CCOTLAB-804

This map is intended solely for the equipment configuration stated above.
Coverage can vary significantly if different configurations are used.

ROCHELLE MUNICIPAL UTILITIES – RADIO COMMUNICATIONS SYSTEM BID

S&H	1	Shipping and handling of all Equipment (Excluding GW3)	\$750
FCC License	1	Applying for new UHF FCC License	\$2000
Installation	1	Install for Entire Radio Project	\$10,000
Total:			
		Total Price of Bid	\$237,627.70

INTEGRATORS / AUTHORIZED RESELLERS:

All participants bidding the RMU system should be within a 60-mile radius for quick response times to any issues that may arise in the future. It is *recommended* that the Integrators are Motorola Authorized Service Shop and/or Motorola Badged Partners for any integrations beyond the radio communications system. Each bidder should include their labor to install and programming of all subscribers and infrastructure equipment.

PROPOSAL SUBMISSION

SUBMIT PROPOSALS TO: City of Rochelle, 420 North 6th Street, Rochelle, IL, 61068 - Attention: Brittney Zick, HR Risk and Safety Coordinator. **Proposals should be clearly marked “Radio Communications System Bid,” and are due no later than 11:00 am CST on Wednesday, May 3, 2023.** The bid opening will take place immediately thereafter in the City of Rochelle Council Chambers. It is the responsibility of the bidder to ensure that proposals are received by the above deadline. Late proposals will not be considered.