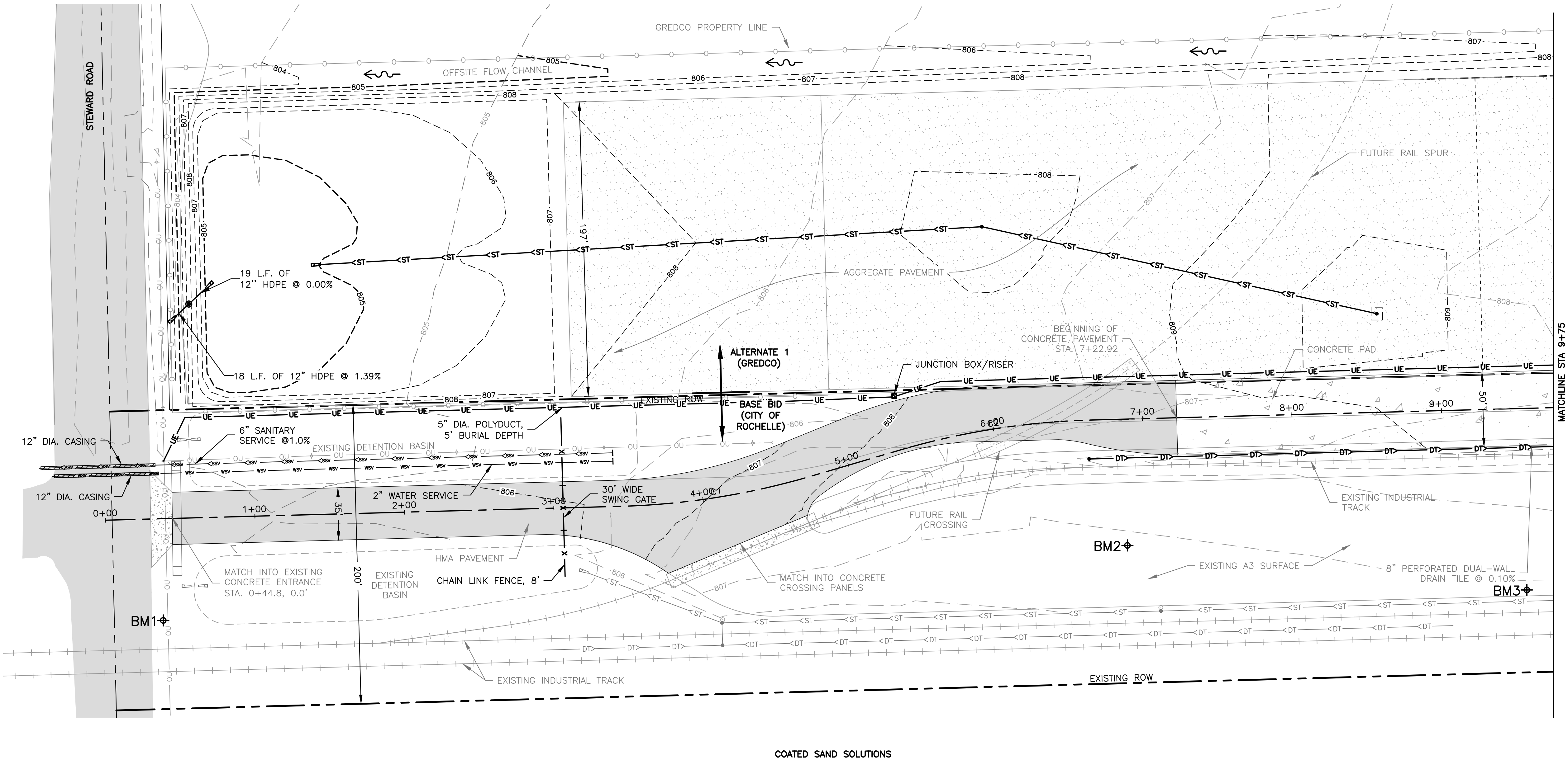


LEGEND

- HMA PAVEMENT
CONCRETE PAVEMENT
AGGREGATE PAVEMENT

NOTE:

1. BASE BID TO BE FUNDED BY DCEO GRANT AND CITY OF ROCHELLE FUNDS. IMPROVEMENTS GENERALLY INCLUDE ALL GRADING, CONCRETE AND HMA PAVING, AND IMPROVEMENTS ADJACENT TO THE EXISTING RAIL SPUR.
2. ALTERNATE BID IS TO BE FUNDED BY GREDCO AND GENERALLY INCLUDES ALL GRADING, STORM WATER MANAGEMENT, STORM SEWER AND AGGREGATE PAVEMENT IMMEDIATELY NORTH OF THE BASE BID.



COATED SAND SOLUTIONS

CURVE TABLE									
CURVE #	R	L	T	Δ	CHORD	BEARING	E	PC STA	PT STA
C1	499.70	129.49	65.11	014°50'50"	129.13	N81°01'56"E	4.19	3+44.22	4+09.33
C2	500.00	129.60	65.17	014°51'05"	129.24	N81°02'04"E	4.19	5+35.63	6+00.80

FEHR GRAHAM

ENGINEERING & ENVIRONMENTAL

ILLINOIS DESIGN FIRM NO. 184-003525

ILLINOIS
IOWA
WISCONSIN

OWNER/DEVELOPER:

CITY OF ROCHELLE
420 NORTH SIXTH STREET
ROCHELLE, IL 61068

PROJECT AND LOCATION:

PROPOSED TRANSLOAD YARD
EXPANSION
ROCHELLE, ILLINOIS

DRAWN BY: YJ
APPROVED BY: NJC
DATE: 03/03/23
SCALE: AS NOTED

REVISIONS

REV. NO.	DESCRIPTION	DATE

DRAWING:

SITE PLAN 1

SET TYPE: CHANGE ORDER 1

G:\C30\20\20-1026A\20-1026A - DESIGN.dwg, SITE

JOB NUMBER:

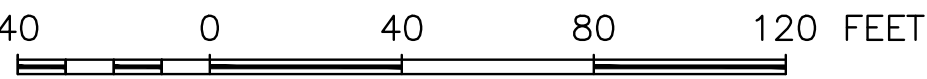
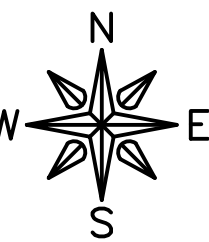
20-1026A

SHEET NUMBER:

3 of .

PLOT DATE: 3/6/23

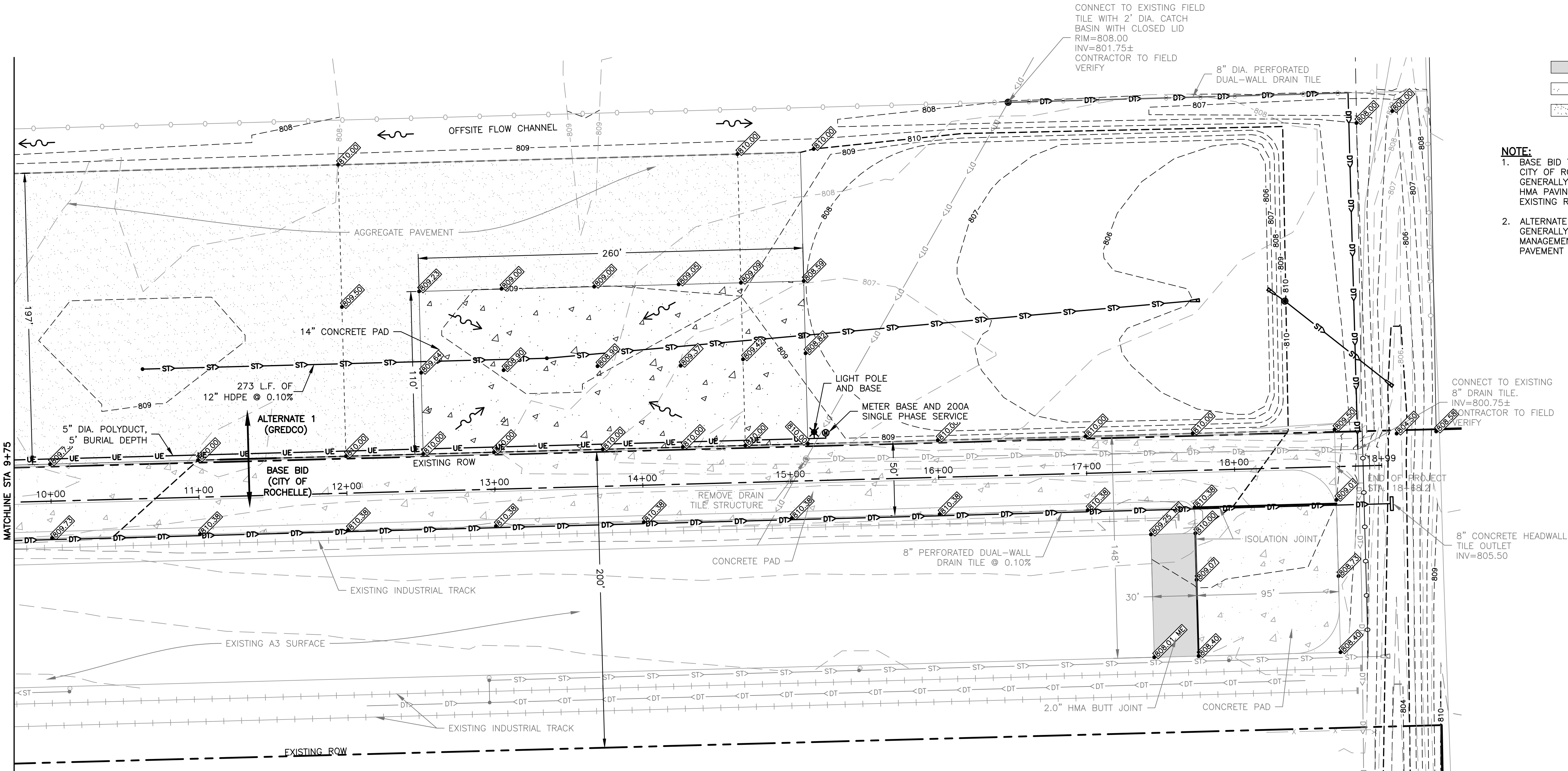
© 2023 FEHR GRAHAM



LEGEND

- HMA PAVEMENT
- CONCRETE PAVEMENT
- AGGREGATE PAVEMENT

- NOTE:
- BASE BID TO BE FUNDED BY DCEO GRANT AND CITY OF ROCHELLE FUNDS. IMPROVEMENTS GENERALLY INCLUDE ALL GRADING, CONCRETE AND HMA PAVING, AND IMPROVEMENTS ADJACENT TO THE EXISTING RAIL SPUR.
 - ALTERNATE BID IS TO BE FUNDED BY GREDCO AND GENERALLY INCLUDES ALL GRADING, STORM WATER MANAGEMENT, STORM SEWER AND AGGREGATE PAVEMENT IMMEDIATELY NORTH OF THE BASE BID.



FEHR GRAHAM

ENGINEERING & ENVIRONMENTAL

ILLINOIS DESIGN FIRM NO. 184-003525

ILLINOIS
IOWA
WISCONSIN

OWNER/DEVELOPER:

CITY OF ROCHELLE
420 NORTH SIXTH STREET
ROCHELLE, IL 61068

PROJECT AND LOCATION:

PROPOSED TRANSLOAD YARD
EXPANSION
ROCHELLE, ILLINOIS

DRAWN BY: YJ
APPROVED BY: NJC
DATE: 03/03/23
SCALE: AS NOTED

REVISIONS

REV. NO.	DESCRIPTION	DATE

DRAWING:

SITE PLAN 2

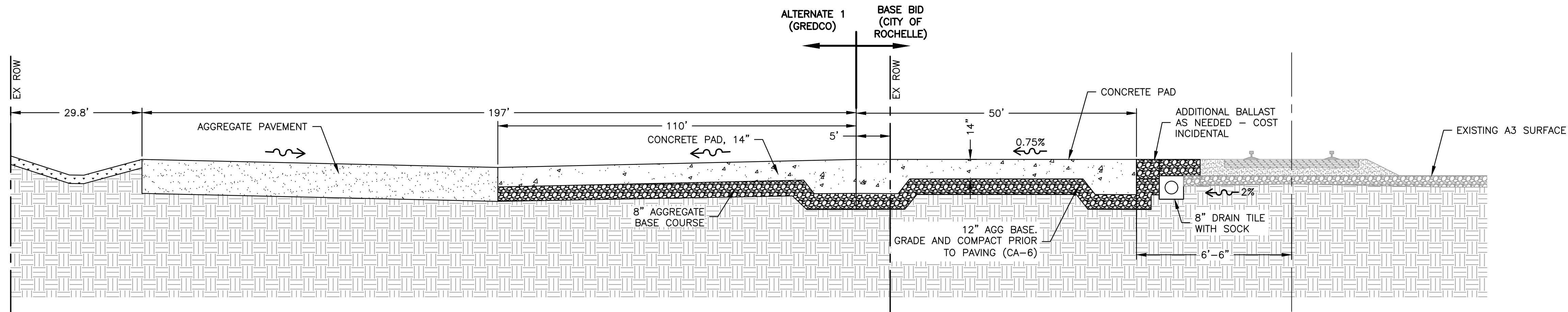
SET TYPE: CHANGE ORDER 1

JOB NUMBER:

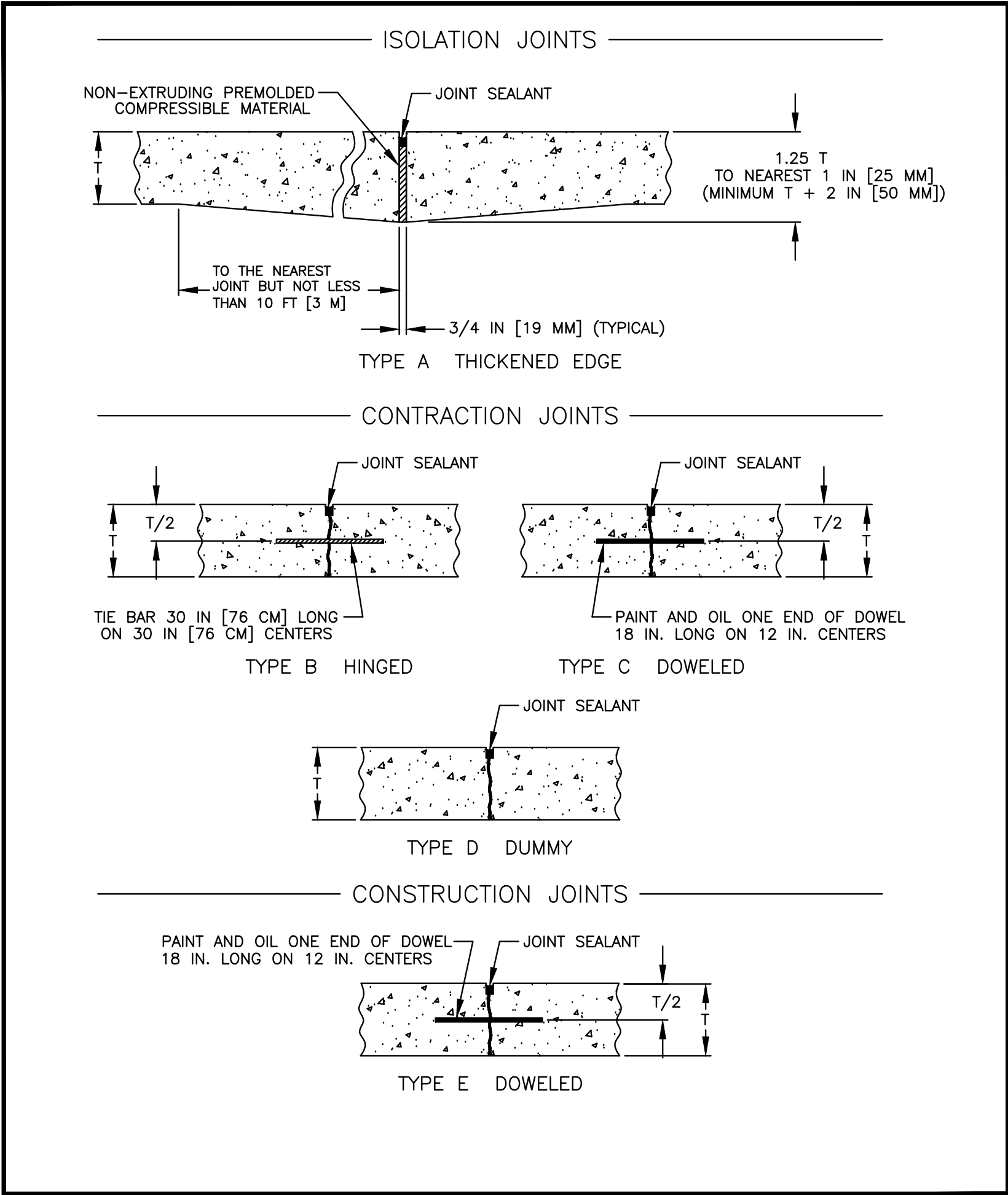
20-1026A

SHEET NUMBER:

4 of .



PROPOSED TYPICAL RAIL CROSS SECTION
N.T.S.



FEHR GRAHAM

ENGINEERING & ENVIRONMENTAL

ILLINOIS DESIGN FIRM NO. 184-003525

ILLINOIS

IOWA

WISCONSIN

OWNER/DEVELOPER:

CITY OF ROCHELLE
420 NORTH SIXTH STREET
ROCHELLE, IL 61068

PROJECT AND LOCATION:

PROPOSED TRANSLOAD YARD
EXPANSION
ROCHELLE, ILLINOIS

DRAWN BY: YJ
APPROVED BY: NJC
DATE: 03/03/23
SCALE: AS NOTED

REVISIONS		
REV. NO.	DESCRIPTION	DATE

DRAWING:

DETAILS

SET TYPE: CHANGE ORDER 1

G:\C30\20-1026A\Plans\20-1026 - Plans.dwg, DET

JOB NUMBER:

20-1026A

SHEET NUMBER:

5 of .



GENERAL NOTES

B Box--Extension type Minneapolis pattern base (Mueller H-10300)

5 ¼ Box--Screw type depth adjustment with WATER on lid. (Tyler 6645)

Curb Stop--Ball type cc thread (Mueller 300 B-25155)

Corp Stop--Ball type cc thread (Mueller 300 B-25008)

Main Valves--Resilient Wedge (Mueller 2360 Series)

Hydrants 5 1/4--operating nut 1 1/2 pentagon, open right, 2 hose nozzles, 1 pumper nozzle national standard thread, all bolts below grade to be stainless steel, red in color. (Mueller Super Centurion 250 3 way)

Saddles--double strap epoxy coated or bronze. (Mueller BR2S, DE2s) Smith Blair #317
Tapping Sleeve--Cl, DI Stainless Steel (Mueller H-304, H615)
Water Main--DI Class 52, DI PSI Class 350, PVC C900, C909.

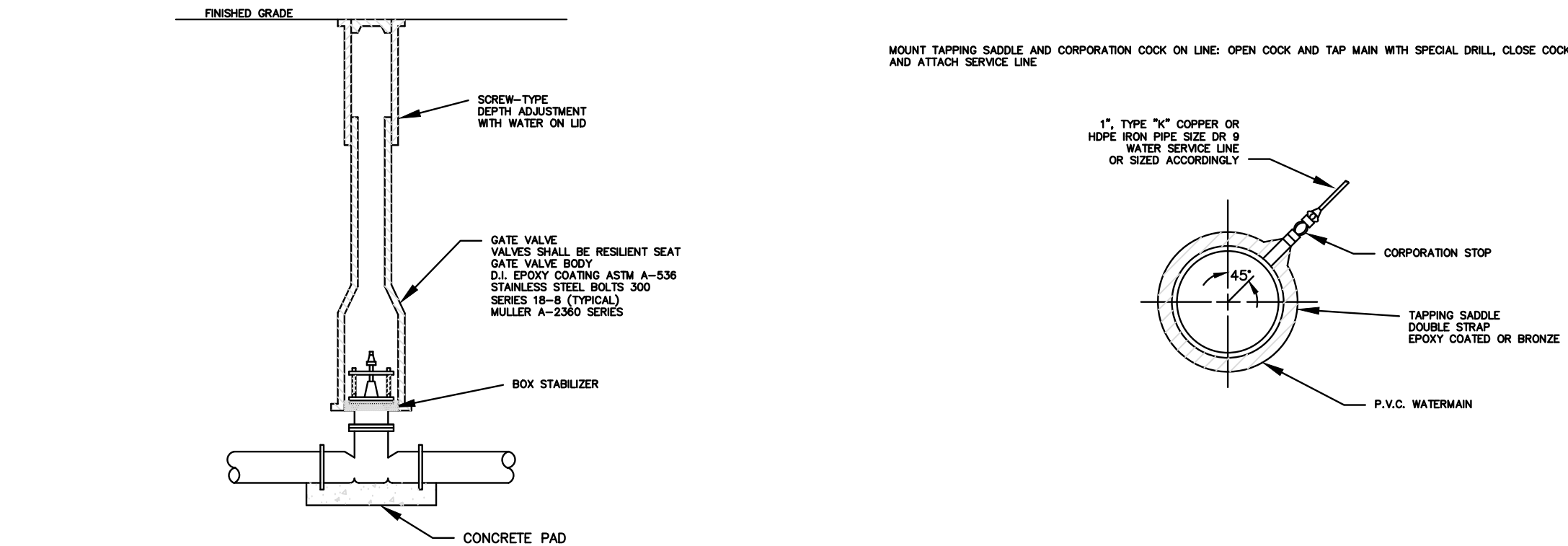
PVC Watermain--Tracer cable shall be a direct bury, #10 THHN solid wire; wire is to be taped or attached in an approved manner to all water mains during installation, prior to backfilling, ground to 3'+ copper or brass rod every 200 feet. If HDPE is used, a tracer wire the length of the service is required. Tracer wire must be terminated in a tracer wire box within a one foot radius of the curb box.

Repair Clamps--Full Seal Stainless
Copper--Type K
Water Service 2" or Less -- HDPE Iron Pipe Size Dr 9 with tracer wire
Meters--Supplied by City of Rochelle

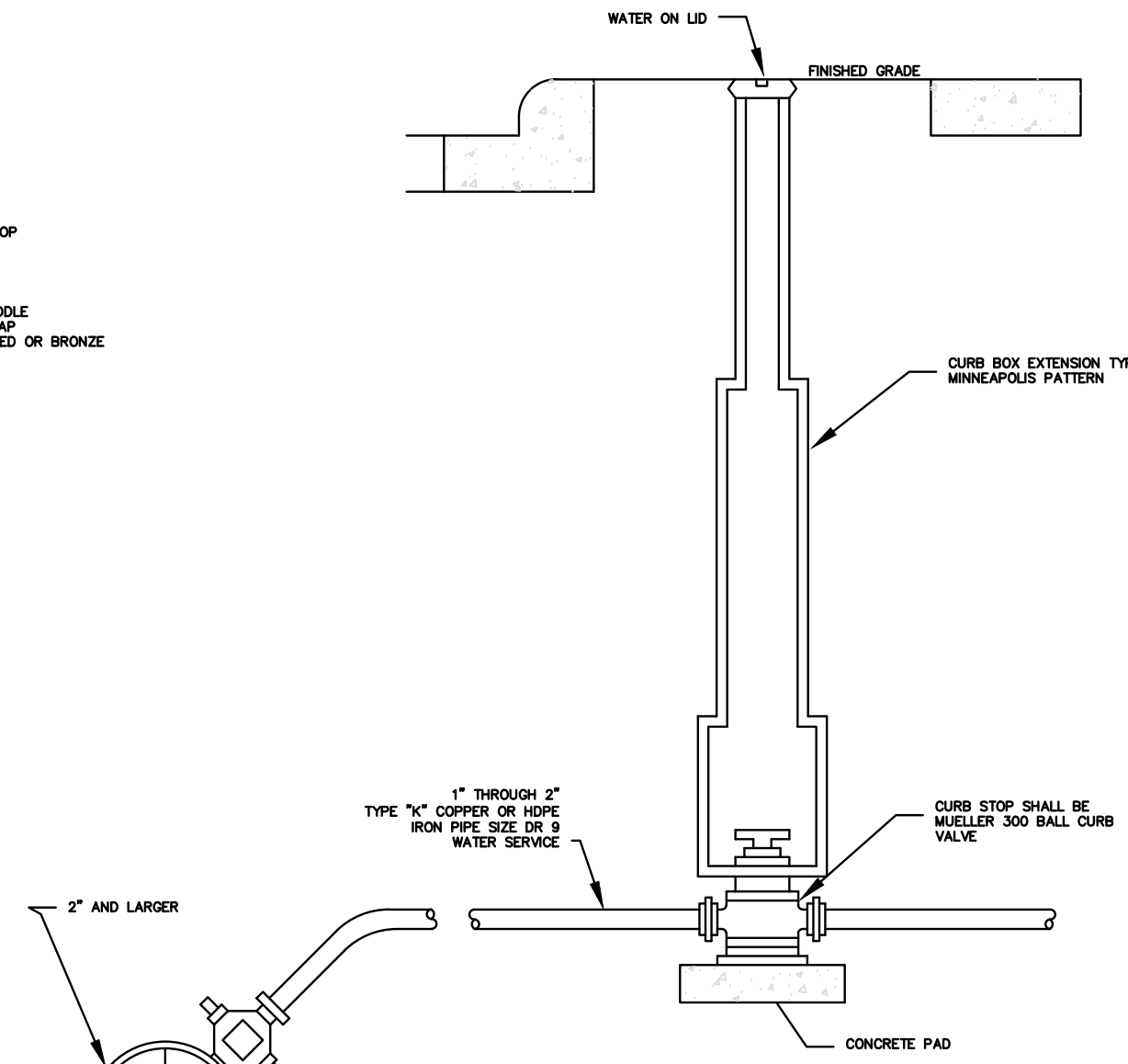
All materials shall be manufactured in the US, if material is not available in the US please note what material is unavailable and where it is coming from in the quote.

When the watermain is not looped from two source feeds, an automatic flush hydrant, Kupferle 9800 Eclipse unit, or equal, is required.

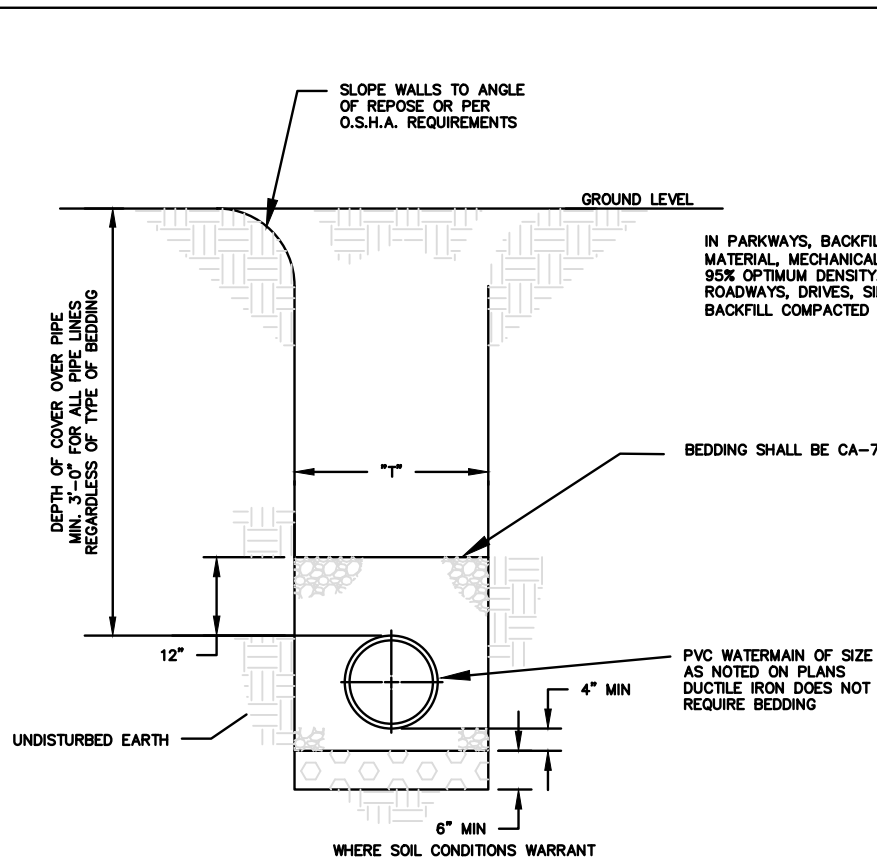
Curb stop markers are required in any new construction. Markers to be installed in concrete.



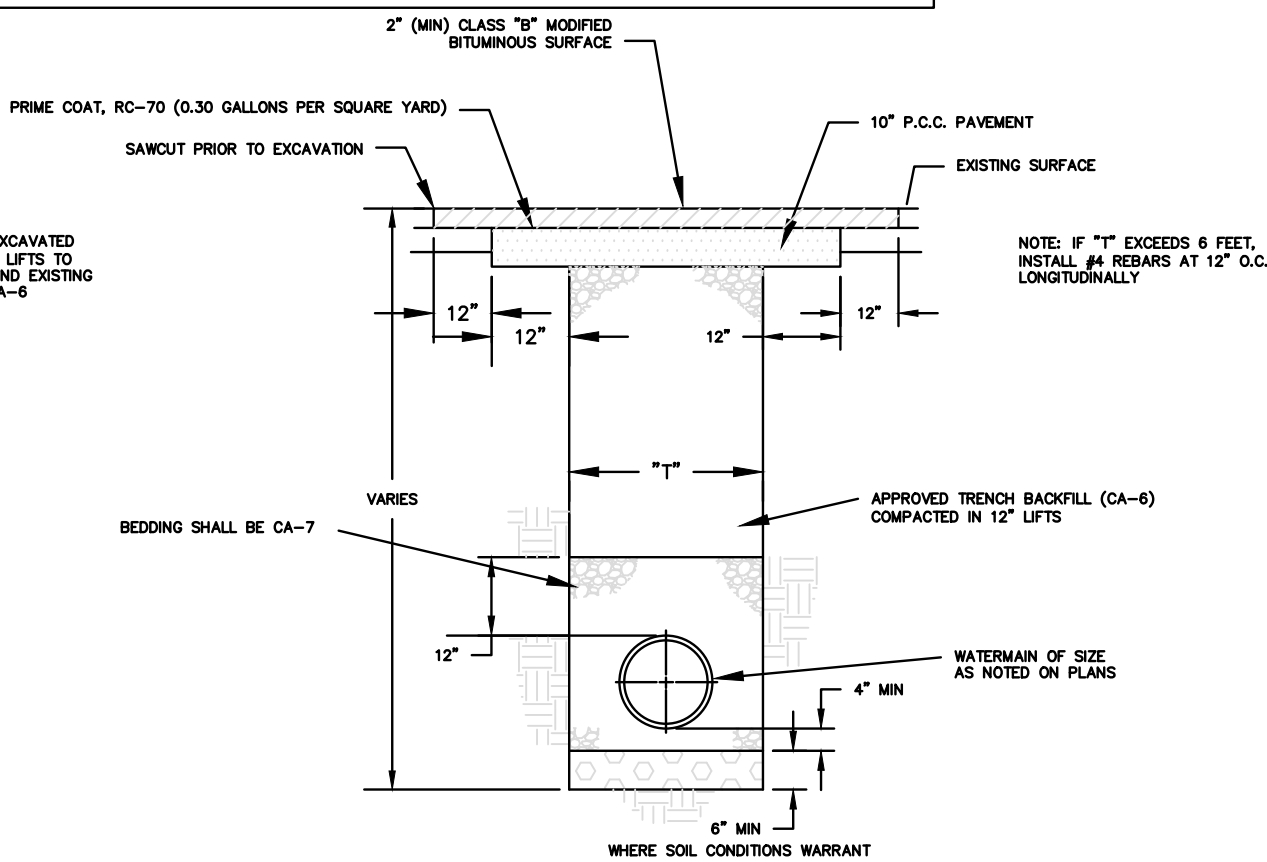
VALVE AND VALVE BOX INSTALLATION AND ASSY.



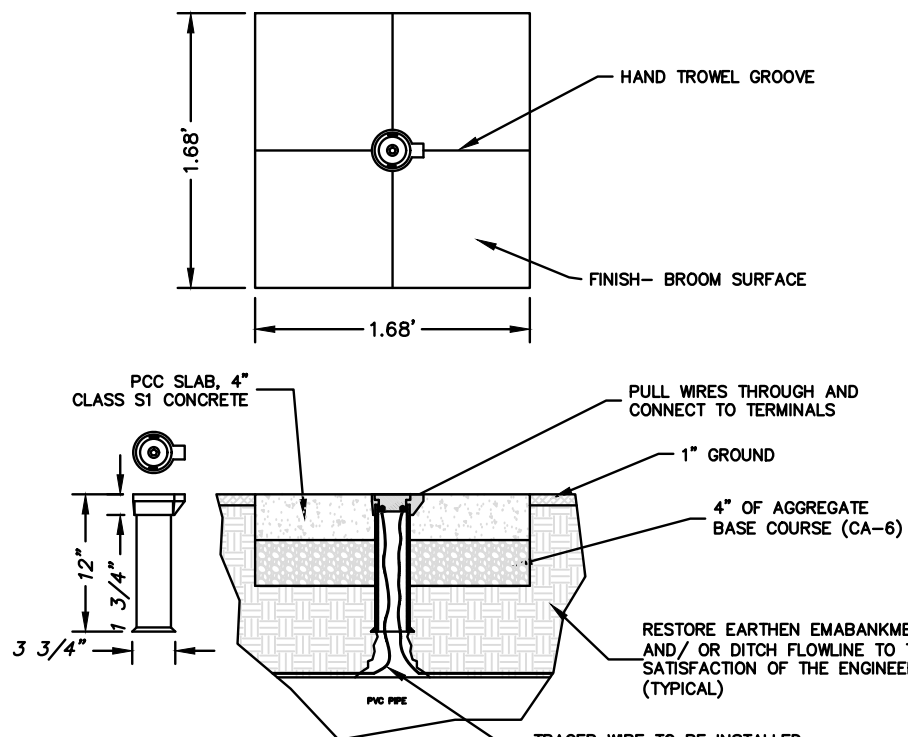
CURB BOX INSTALLATION AND ASSY.



TYPICAL WATERMAIN TRENCH DETAIL



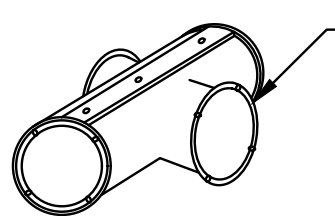
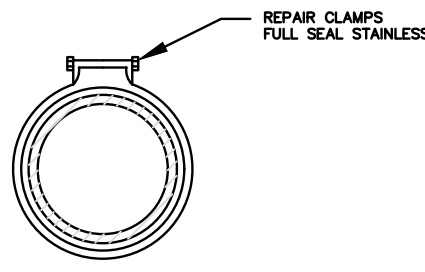
BITUMINOUS PAVEMENT REPLACEMENT



TRACER WIRE ACCESS BOX

AT OR NEAR HYDRANT OR VALVE AS SHOWN ON PLANS OR AS DIRECTED BY ENGINEER

HYDRANT STYLE SHALL BE 5 1/4", 3-WAY, OPEN RIGHT (CLOCKWISE) WITH A 1 1/2" PENTAGON NUT. IT SHALL HAVE 2 HOSE NOZZLES (2 1/2"), 1 PUMPER NOZZLE (4 1/2") NATIONAL STANDARD THREAD, AND BE RED IN COLOR. ACCEPTABLE MANUFACTURERS AND STYLES ARE: MUELLER SUPER CENTURION, 250

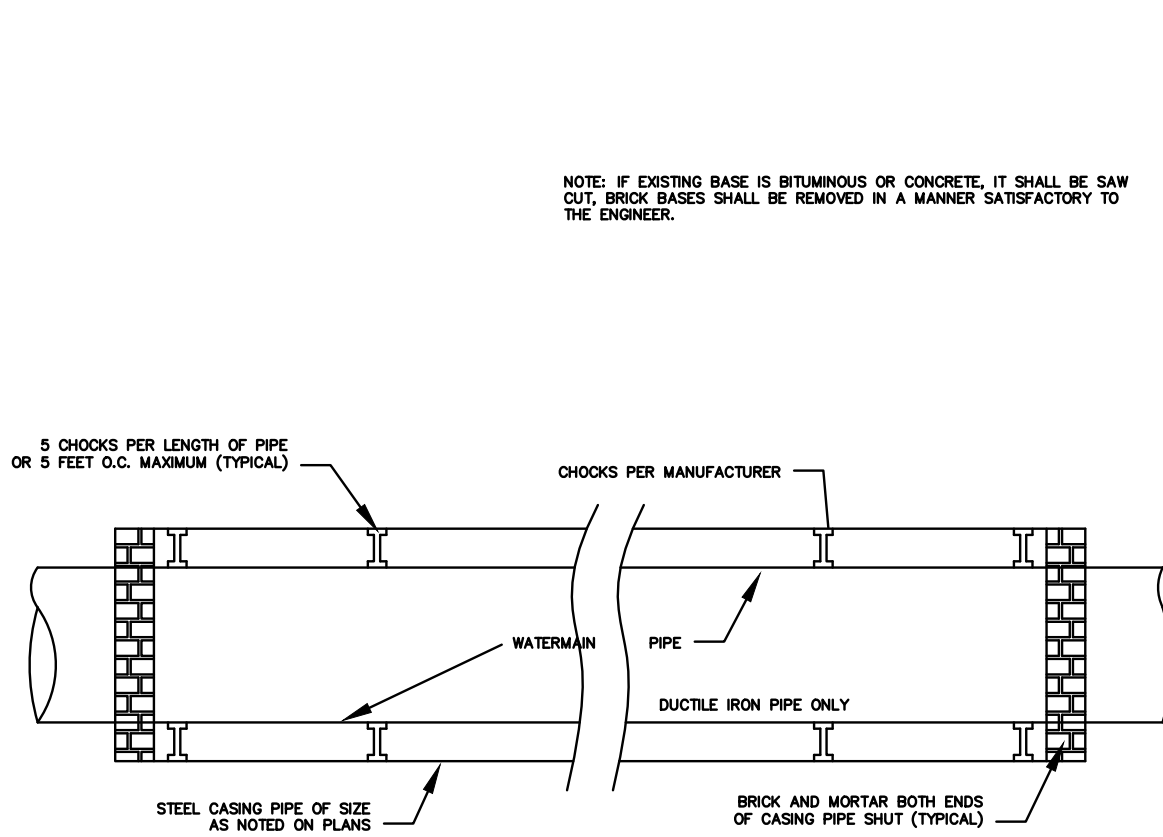


MATERIAL NOTE: WATERMAIN SHALL NOT BE LESS THAN 6" DIA. MATERIALS--DUCTILE IRON PIPE (ASSA-C-151) CLASS 50 CEMENT LINED WITH MECHANICAL OR PUSH ON TYPE JOINT AND ELASTOMERIC SEALS (ASTM 477) OR PVC AWWA C-900 OR C-909, CLASS 150 DR18, WITH BELL & SPIGOT PUSH ON JOINT (ASTM 477) OR DUCTILE IRON PRESSURE 350, FOR 6"-12" AND 250 FOR 14"-20" WITH PUSH ON TYTON JOINT.

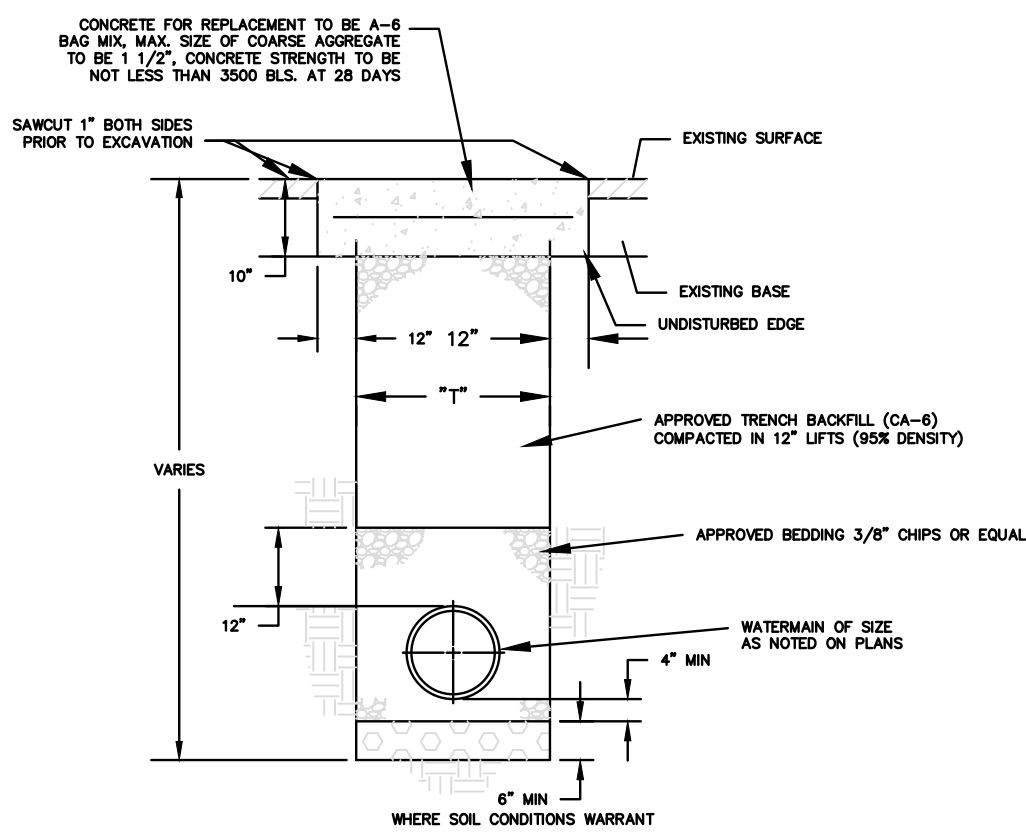
WHEN C-900 OR C-909 PIPE IS USED, A TERMINAL BOX (VALVCO OR EQUAL), SUITABLE FOR FLUSH BURIAL MUST BE PLACED AT GRADE EVERY 500 FEET. THE BOX MUST HAVE A 2 1/2" LOCK CAST IRON TOP AND THE WIRE MUST BE SECURED AT THE TERMINATION POINT.

NOTE: ALL WATERMAIN CONSTRUCTION METHODS AND MATERIALS SHALL BE IN ACCORDANCE WITH THE "STANDARD SPECIFICATIONS FOR WATER AND SEWER CONSTRUCTION IN ILLINOIS", LATEST EDITION.

NOTICE:
THE CONTRACTOR MUST CALL J.U.L.I.E. (1-800-892-0123) BEFORE EXCAVATING.

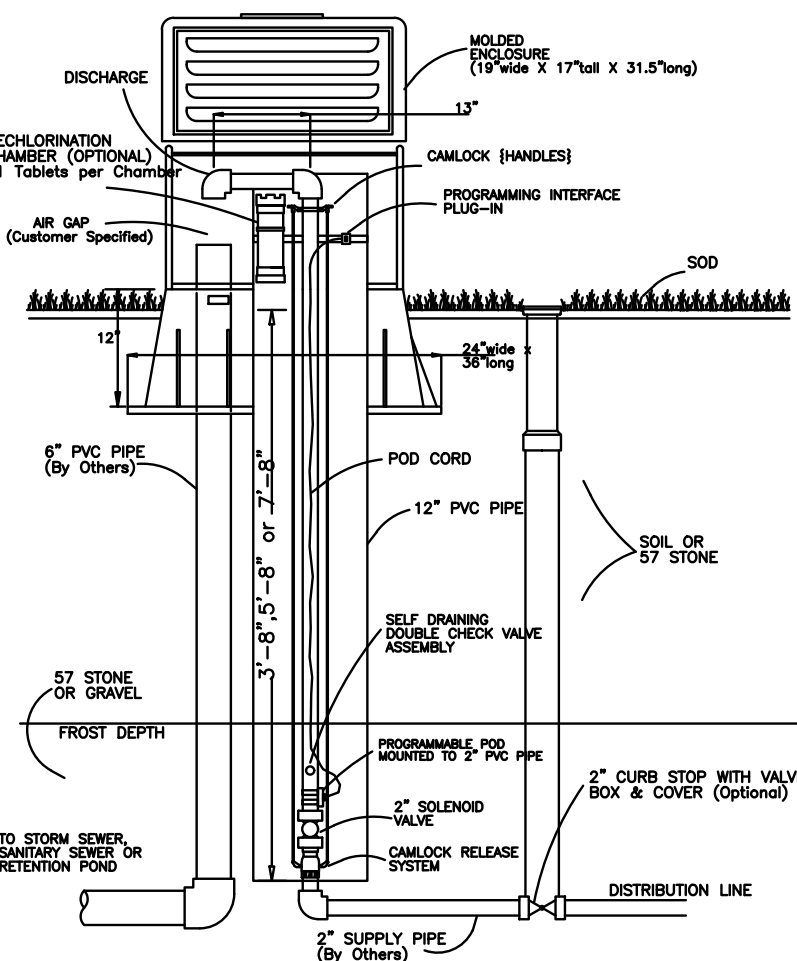


TYPICAL CASING PIPE DETAIL

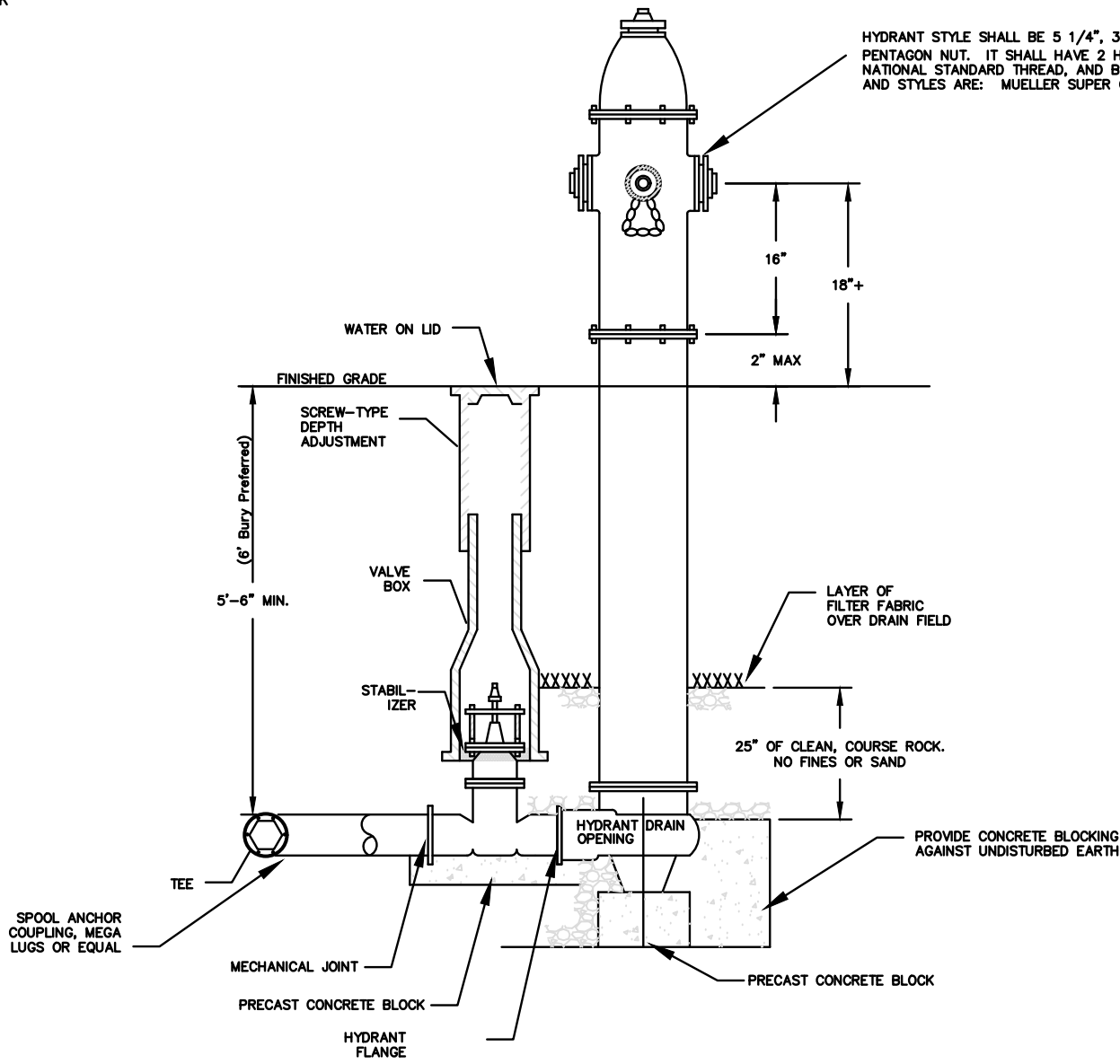


P.C.C. CONCRETE PAVEMENT REPLACEMENT

NOTE: PAVEMENT REPLACEMENT ON ANY EXISTING ROADS SHALL CONFORM TO COUNTY AND/OR CITY REQUIREMENTS



TYPICAL INSTALL KUPFERLE 9800 ECLIPSE



FIRE HYDRANT INSTALLATION AND ASSY.

STANDARD DETAILS FOR
WATER MAIN IMPROVEMENTS

CITY OF ROCHELLE
ROCHELLE MUNICIPAL UTILITIES

DRAWN BY: A. Corl
APPROVED BY:
SCALE: NONE
DATE: 5/19/2006
REVISED: 08/14/2019

SHEET NO.:

FEHR GRAHAM

ENGINEERING & ENVIRONMENTAL

ILLINOIS DESIGN FIRM NO. 184-003525

ILLINOIS
IOWA
WISCONSIN

OWNER/DEVELOPER:

CITY OF ROCHELLE
420 NORTH SIXTH STREET
ROCHELLE, IL 61068

PROJECT AND LOCATION:

PROPOSED TRANSLOAD YARD
EXPANSION
ROCHELLE, ILLINOIS

DRAWN BY: YJ
APPROVED BY: NJC
DATE: 03/03/23
SCALE: AS NOTED

REVISIONS

REV. NO.	DESCRIPTION	DATE

DRAWING:
DETAILS

SET TYPE: CHANGE ORDER 1

G:\C3D\20\20-1026A\Plans\20-1026 - Plans.dwg, DET 1A

JOB NUMBER:

20-1026A

SHEET NUMBER:

7 of .

GENERAL NOTES:

A. Sewer Construction

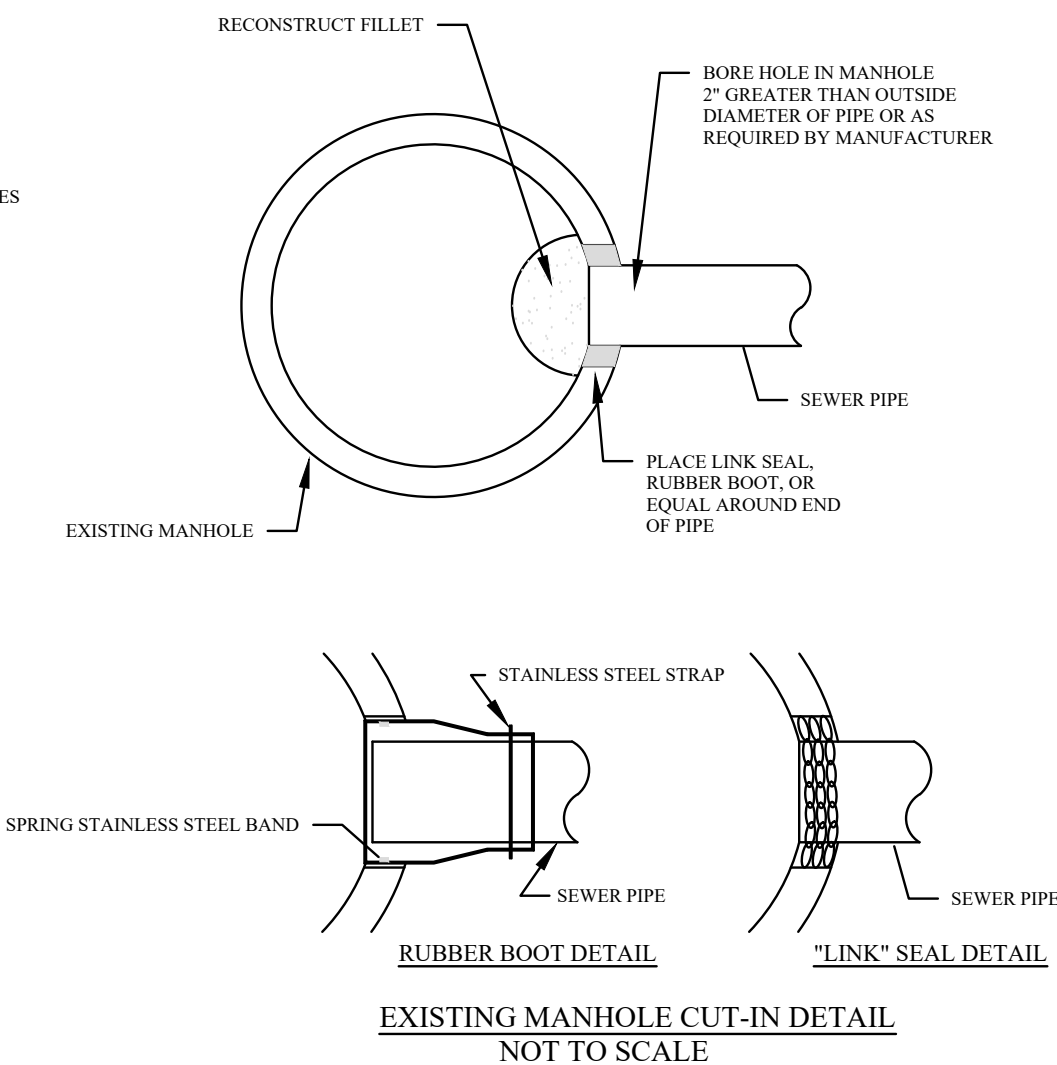
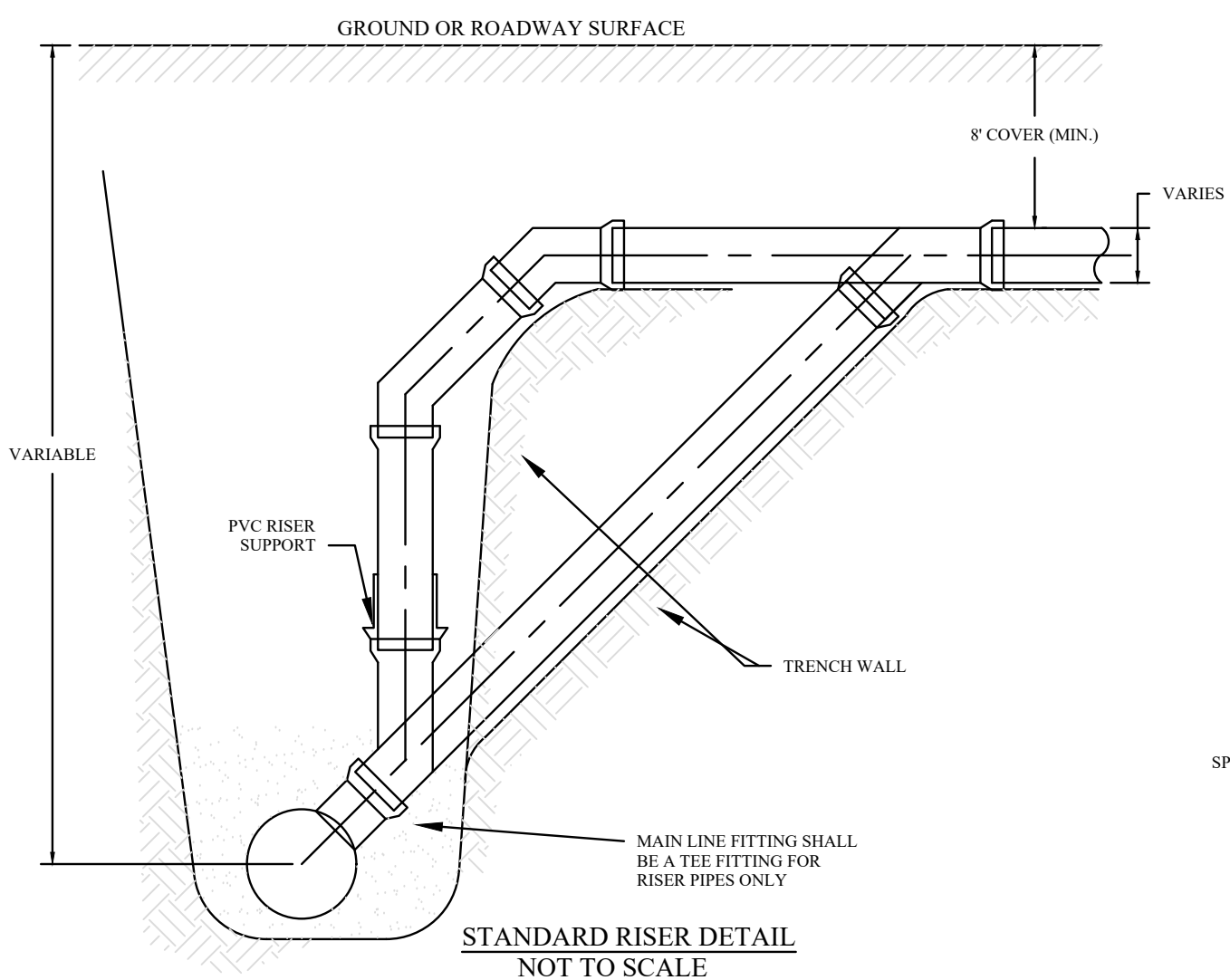
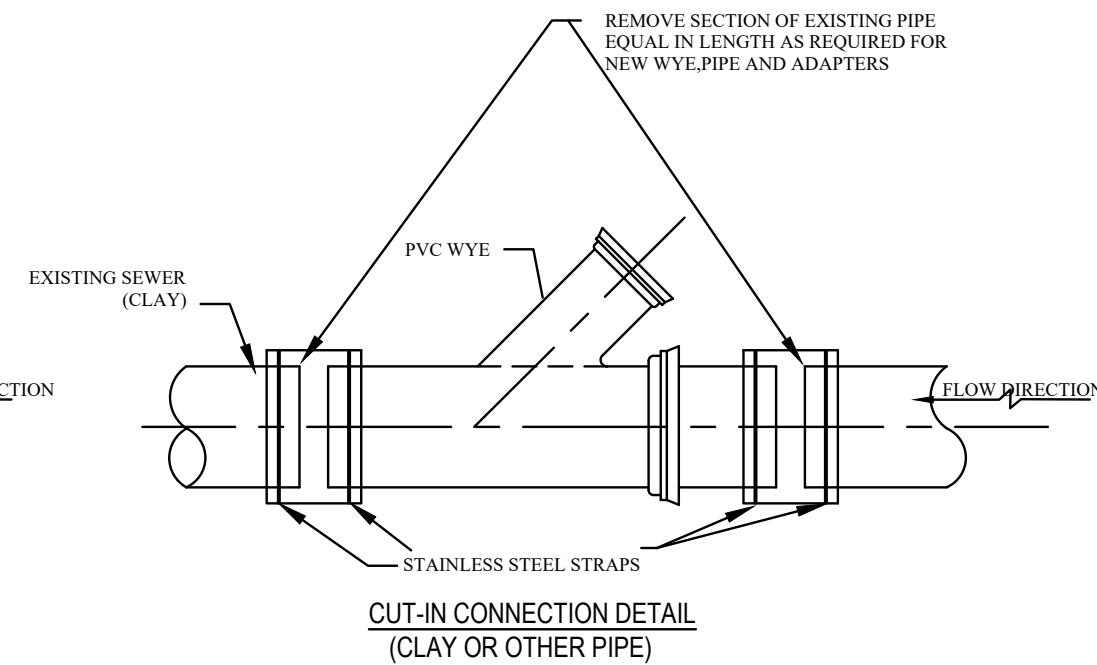
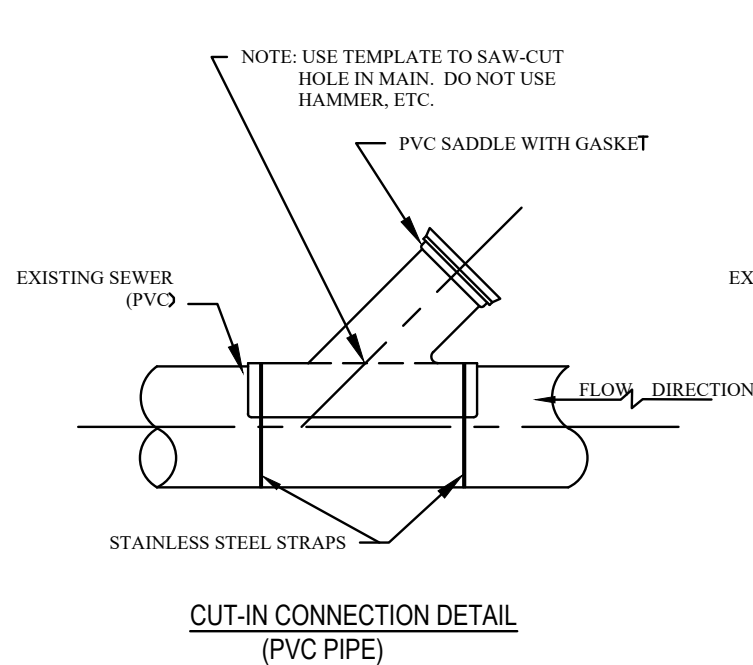
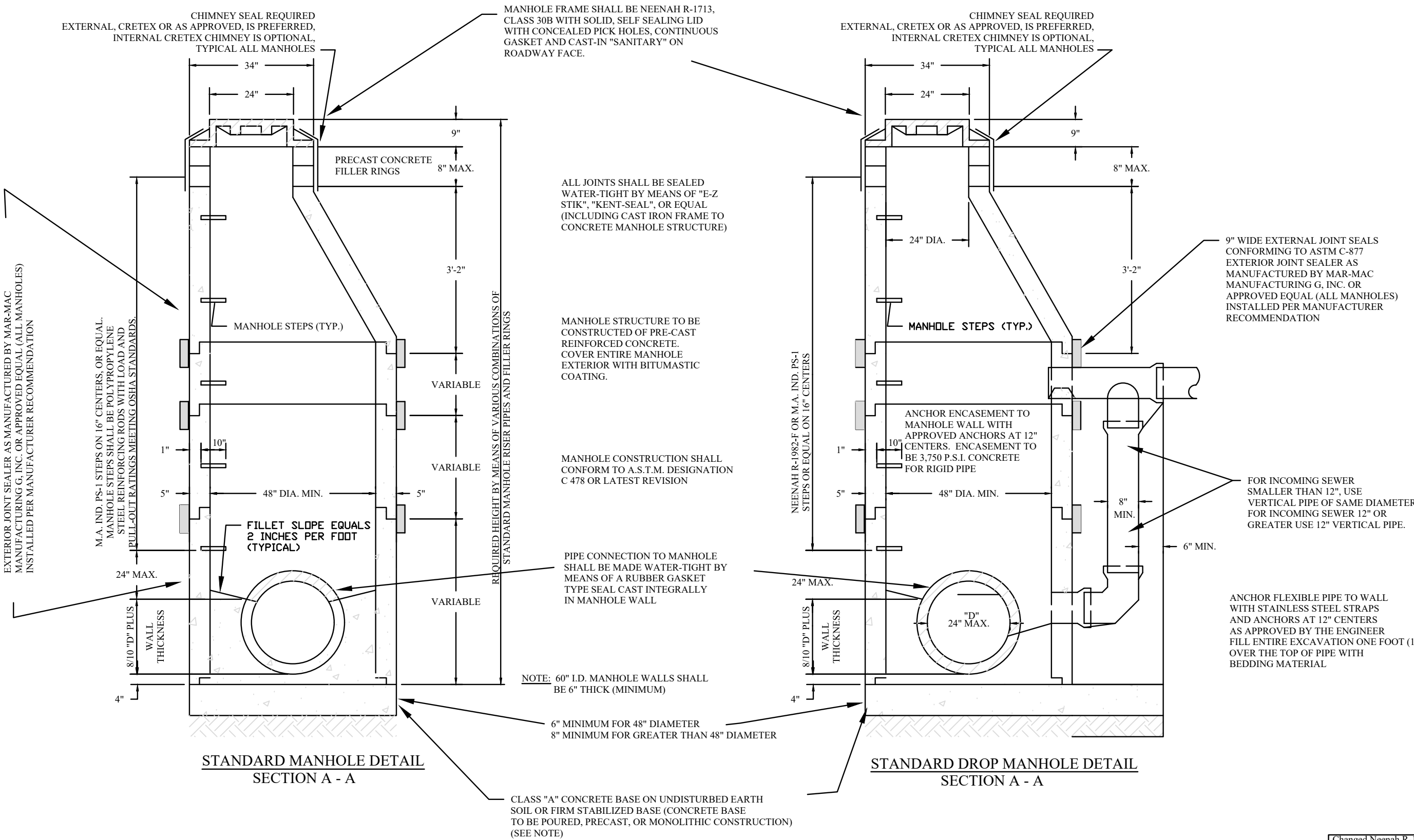
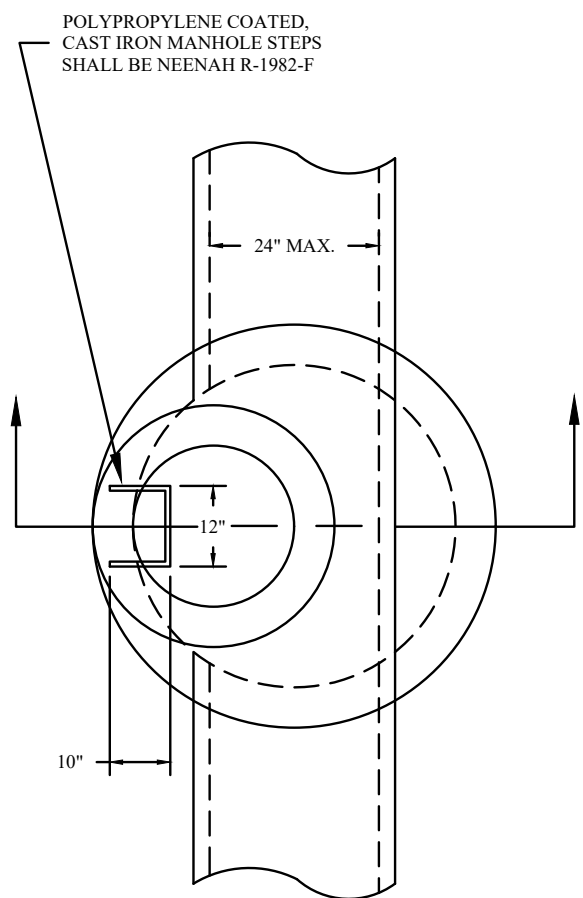
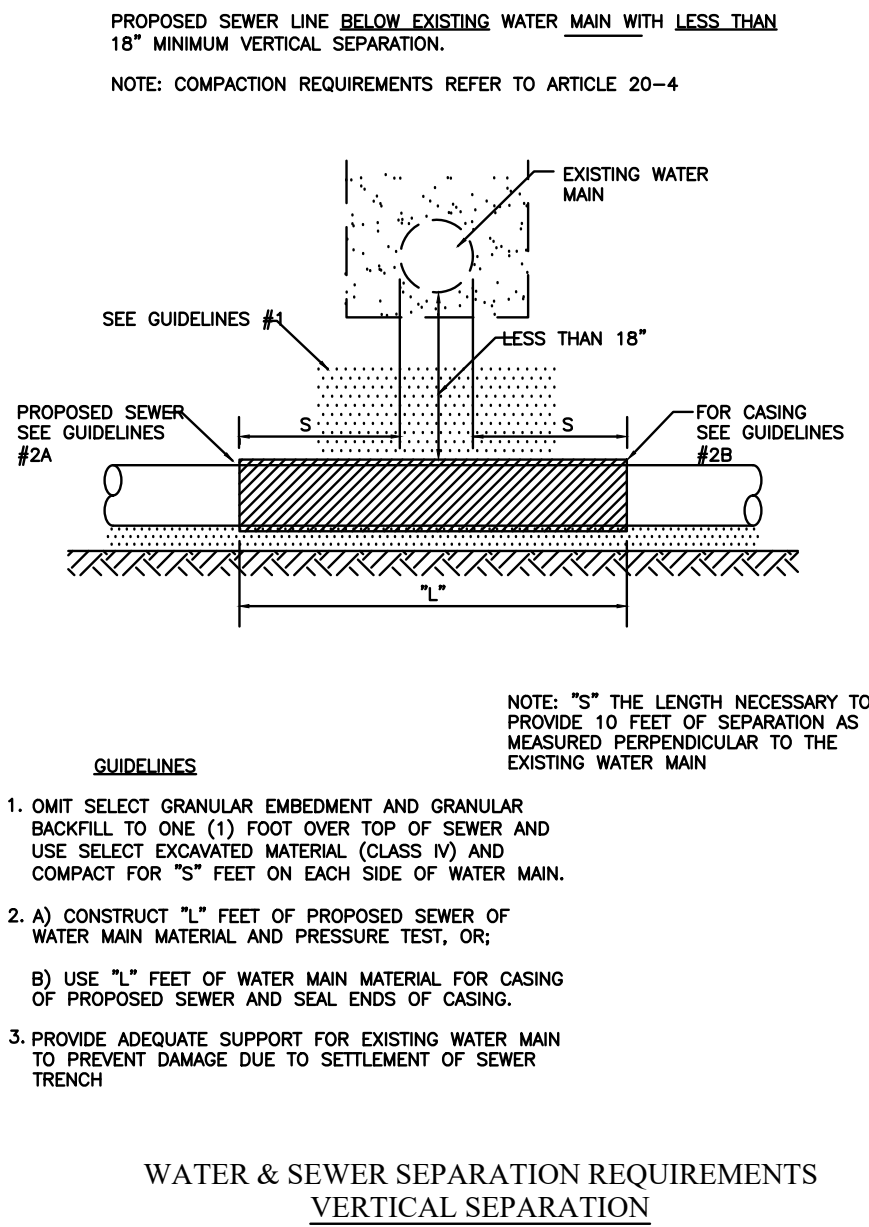
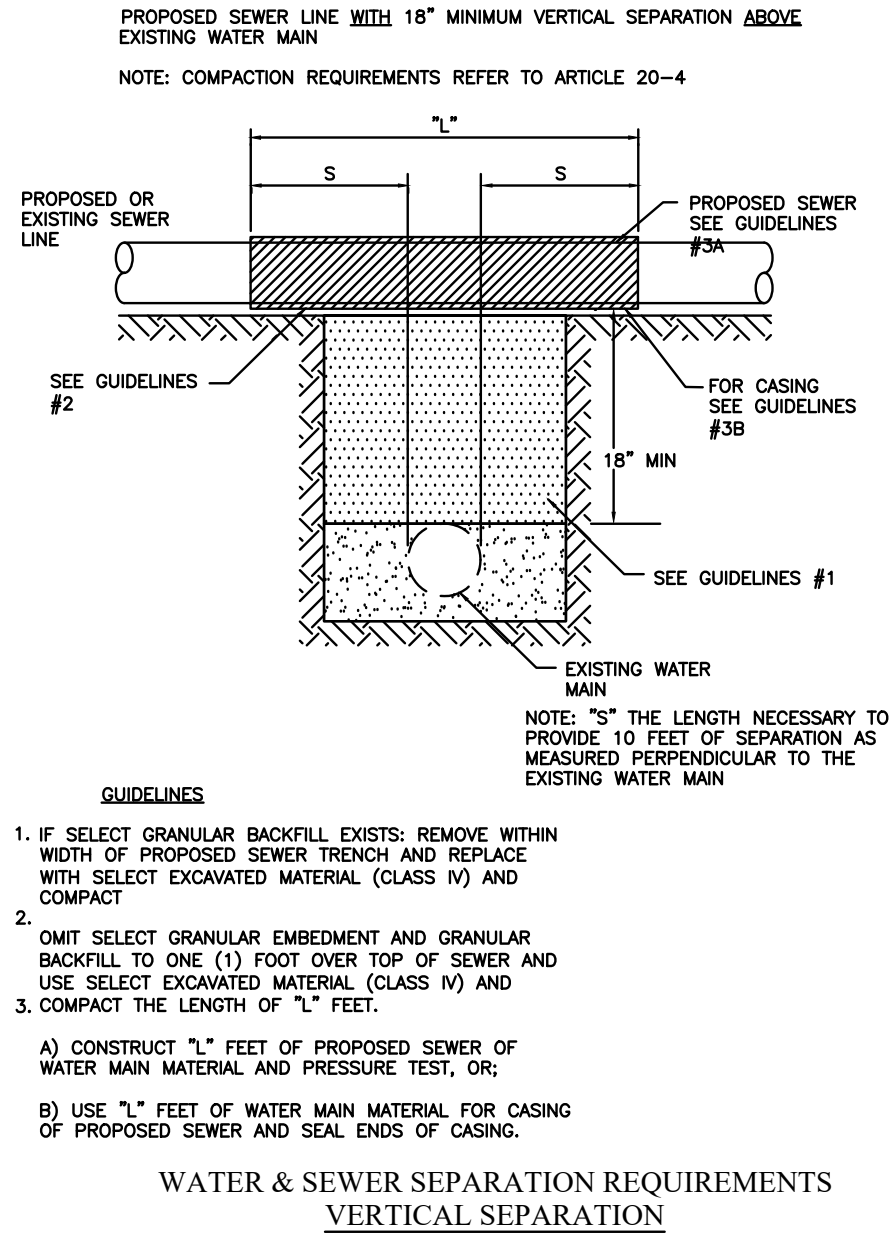
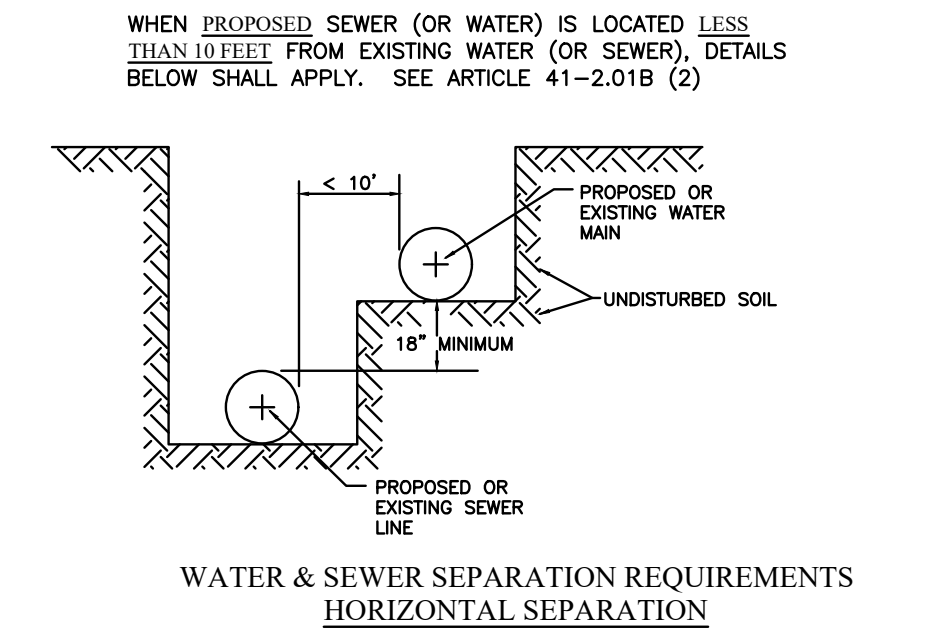
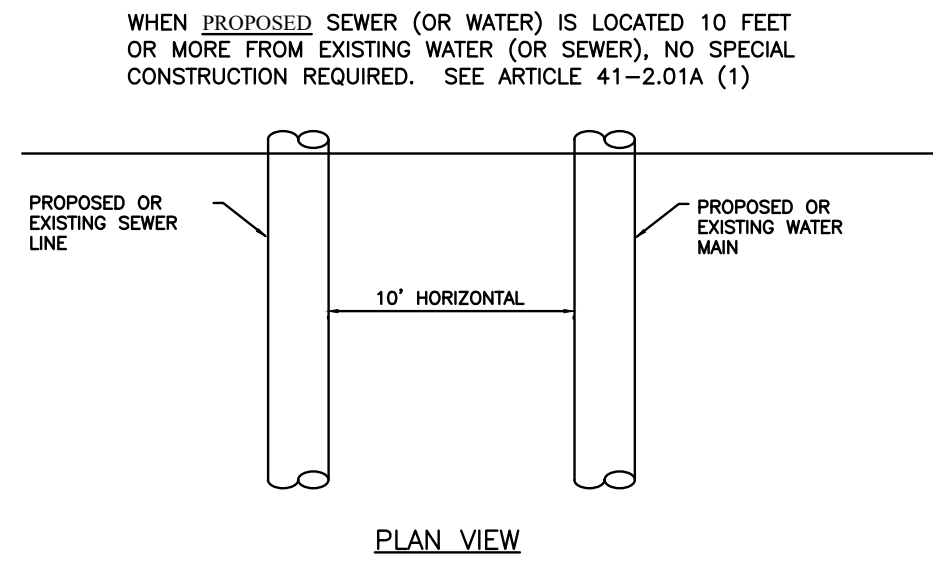
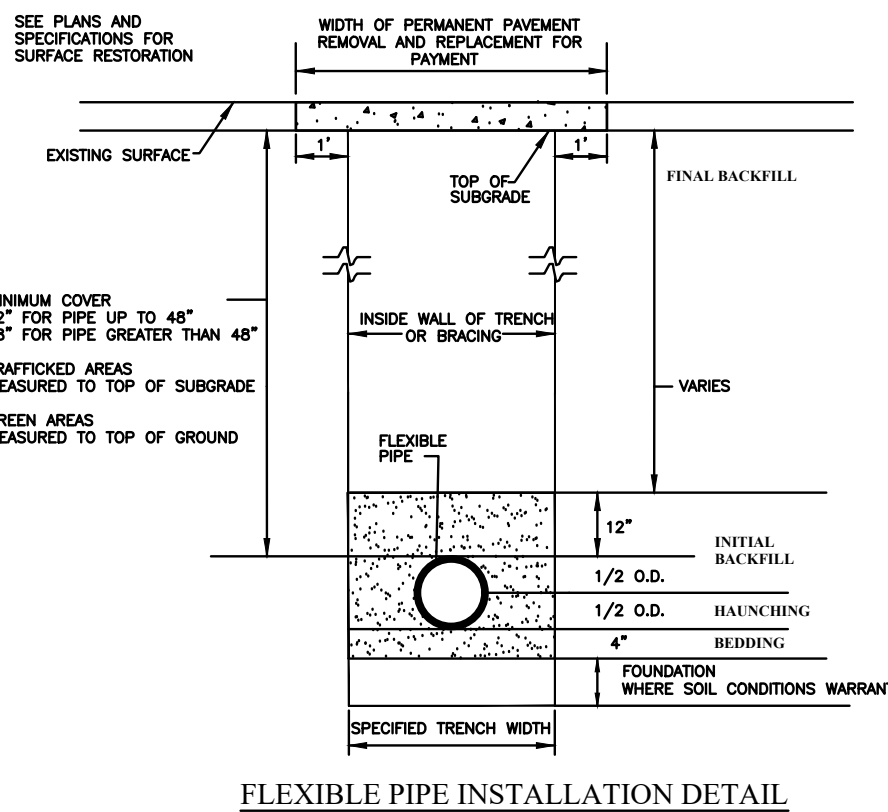
1. All sewers pipe 18-inches and smaller shall be SDR 26, with D3312 gasketed joints, and bedded according to Standard Construction of Sewer and Water Main in Illinois. Approval for alternative pipe material may be granted for pipe sizes larger than 18-inches.
2. Laterals shall be 8 to 10 feet below the street grade, where possible.
3. "Band seal" or similar couplings of appropriate type and size shall be used when joining pipes of dissimilar material.

B. Manhole Construction

1. All manholes shall be precast concrete with a bitumastic coating.
2. Castings shall be Neenah 1713 or equal and set on bitumastic beds.
3. Chimney seals, Cretex, or equal are required. External are preferred, but internal may be allowed.

C. Quality Assurance

1. All sewers must be air tested (low pressure)
2. All sewers must be tested for deflection (Mandrel test)
3. Manholes must be vacuum tested
4. All sewers must be cleaned and televised prior to acceptance
5. All testing of sewer and manholes must be in accordance with ASTM.



CITY OF ROCHELLE, ILLINOIS - SANITARY SEWER STANDARDS

DRAWN BY: A. CORL
SCALE: NONE
DATE: 5/19/06
REVISED: 10/28/2008, 3/3/2011

FEHR GRAHAM
ENGINEERING & ENVIRONMENTAL

ILLINOIS DESIGN FIRM NO. 184-003525

ILLINOIS
IOWA
WISCONSIN

OWNER/DEVELOPER:

CITY OF ROCHELLE
420 NORTH SIXTH STREET
ROCHELLE, IL 61068

PROJECT AND LOCATION:

PROPOSED TRANSLOAD YARD
EXPANSION
ROCHELLE, ILLINOIS

DRAWN BY: YJ
APPROVED BY: NJC
DATE: 03/03/23
SCALE: AS NOTED

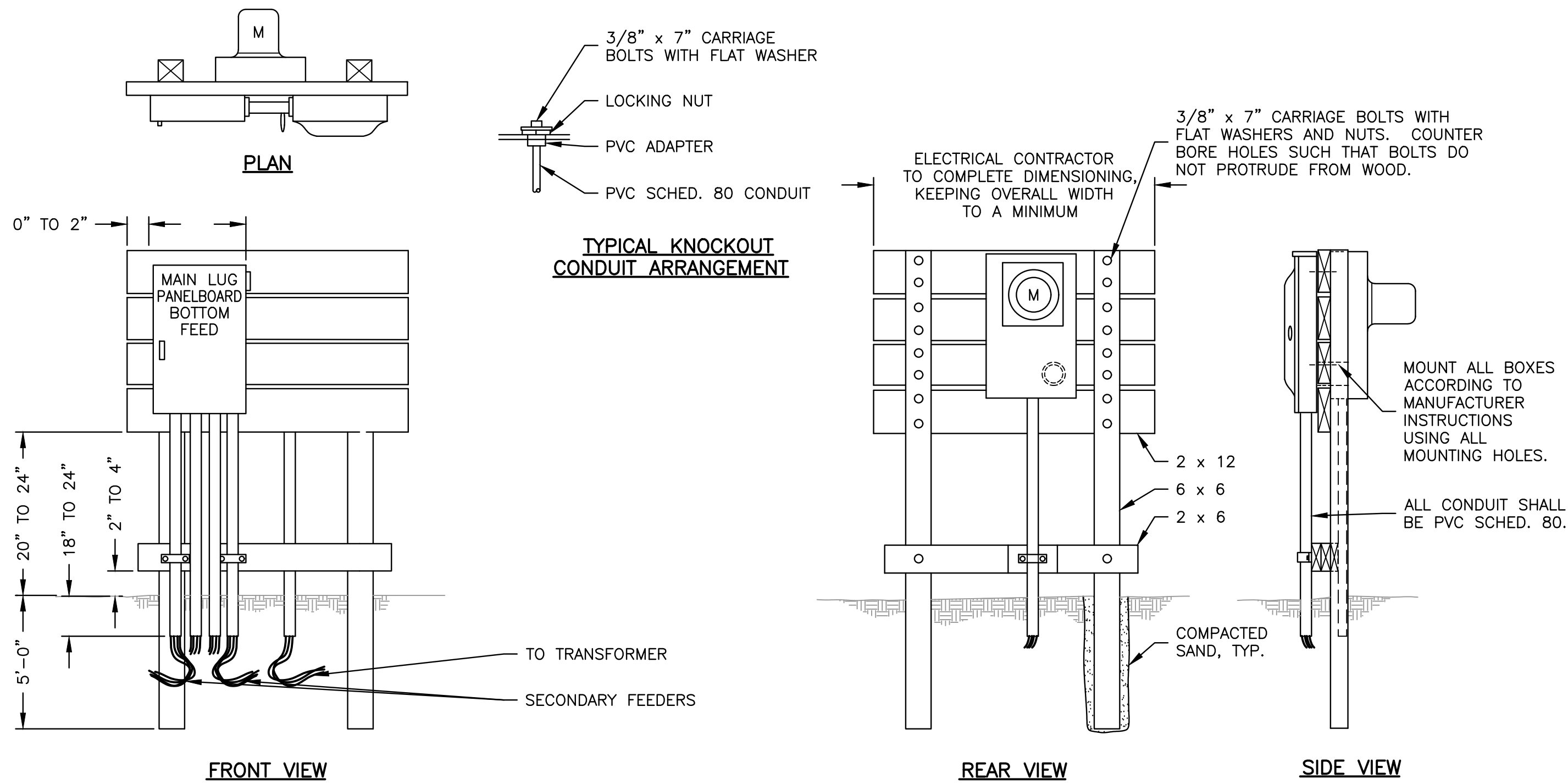
REVISIONS		
REV. NO.	DESCRIPTION	DATE

DRAWING:
DETAILS

SET TYPE: CHANGE ORDER 1
G:\C30\20\20-1026A\Plans\20-1026 - Plans.dwg, DET 18

JOB NUMBER:
20-1026A

SHEET NUMBER:
8 of .



NOTE: ALL CONSTRUCTION CCA TREATED WOOD.

ELECTRICAL SERVICE PANEL DETAILS
N.T.S.

FEHR GRAHAM

ENGINEERING & ENVIRONMENTAL

ILLINOIS DESIGN FIRM NO. 184-003525

ILLINOIS
IOWA
WISCONSIN

OWNER/DEVELOPER:

CITY OF ROCHELLE
420 NORTH SIXTH STREET
ROCHELLE, IL 61068

PROJECT AND LOCATION:

PROPOSED TRANSLOAD YARD
EXPANSION
ROCHELLE, ILLINOIS

DRAWN BY: YJ
APPROVED BY: NJC
DATE: 03/03/23
SCALE: AS NOTED

REVISIONS		
REV. NO.	DESCRIPTION	DATE

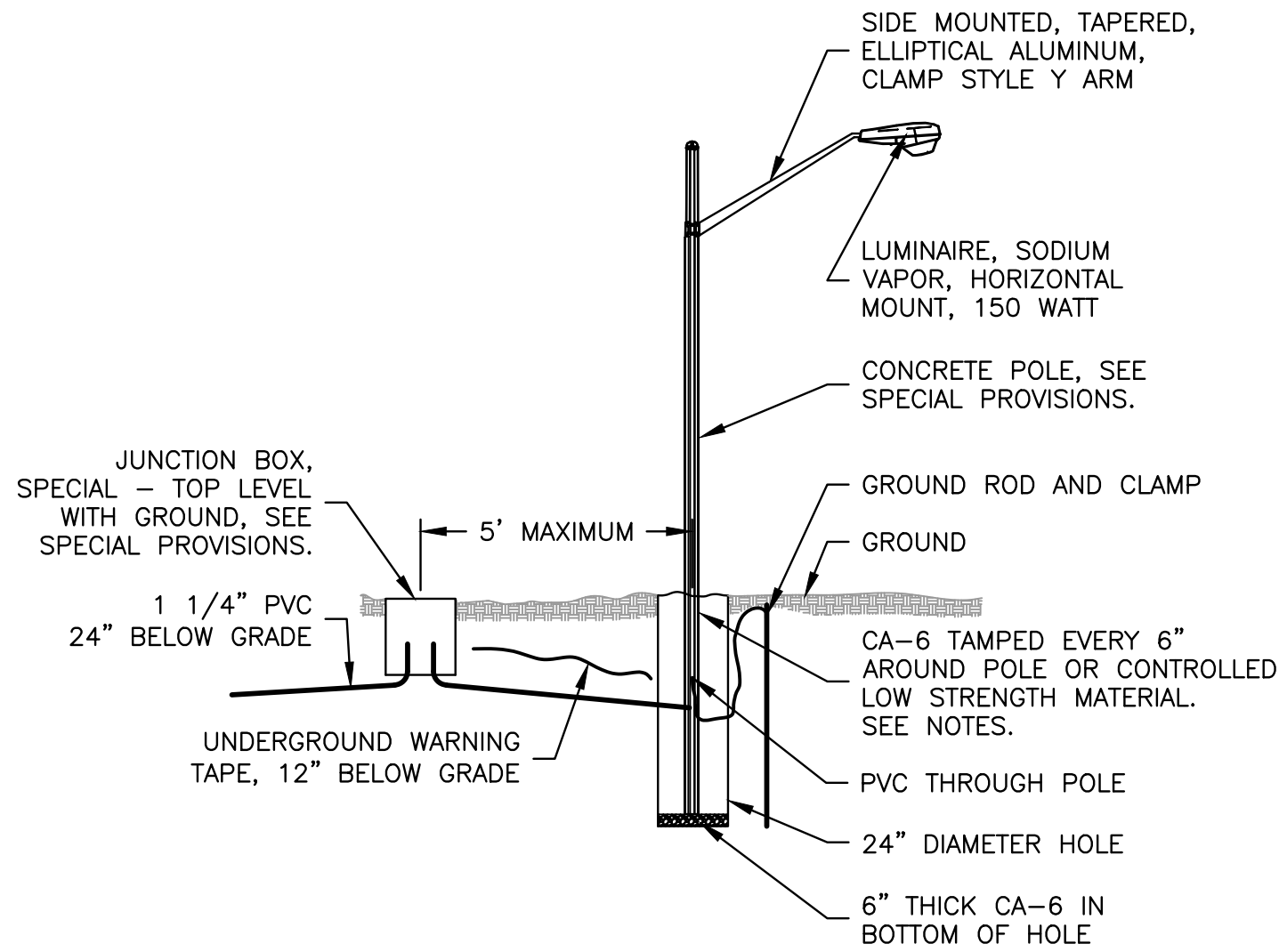
DRAWING:
DETAILS

SET TYPE: CHANGE ORDER 1

G:\C30\20-1026A\Plans\20-1026 - Plans.dwg, DET 10

JOB NUMBER:
20-1026A

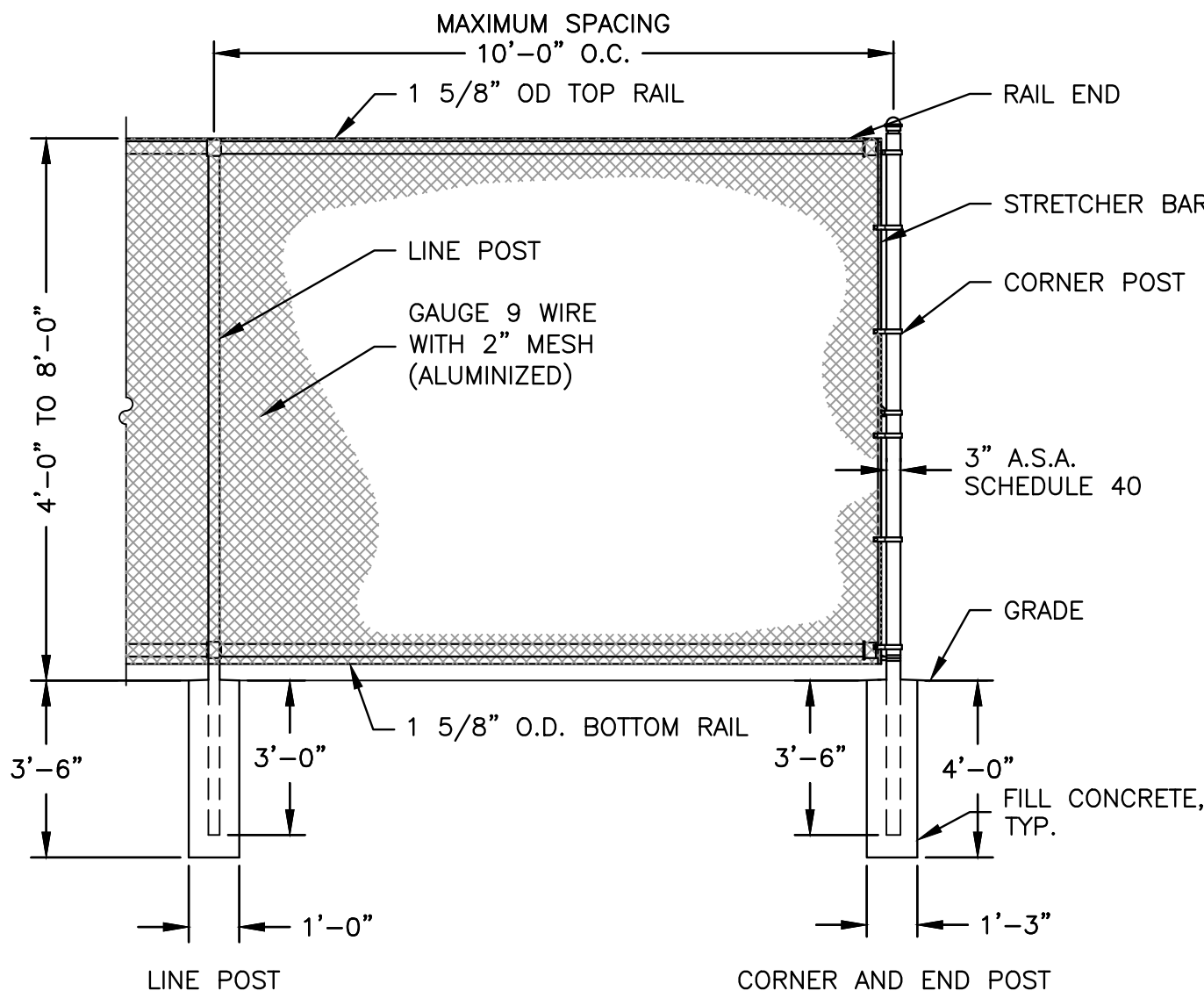
SHEET NUMBER:
10 of .



NOTE: AT SOME LOCATIONS THE POLE MAY BE LOCATED IN AREAS WHERE SAND HAS BEEN PLACED AS BACKFILL IN TRENCHES. THE SAND SHALL BE REMOVED FOR INSTALLATION OF THE POLE AND THE HOLE SHALL BE BACKFILLED WITH CONTROLLED LOW STRENGTH MATERIAL. THE CONTRACTOR SHALL USE CARE IN REMOVING THE SAND SO THAT PAVED AREAS WILL NOT BE UNDERMINED. THIS WORK SHALL BE AS DIRECTED BY THE ENGINEER.

THE COST OF EXCAVATION FOR THE POLE AND BACKFILLING WITH CA-6 SHALL BE INCLUDED IN THE COST OF THE POLE. CONTROLLED LOW STRENGTH MATERIAL WILL BE PAID FOR AT THE CONTRACT UNIT PRICE PER CUBIC YARD.

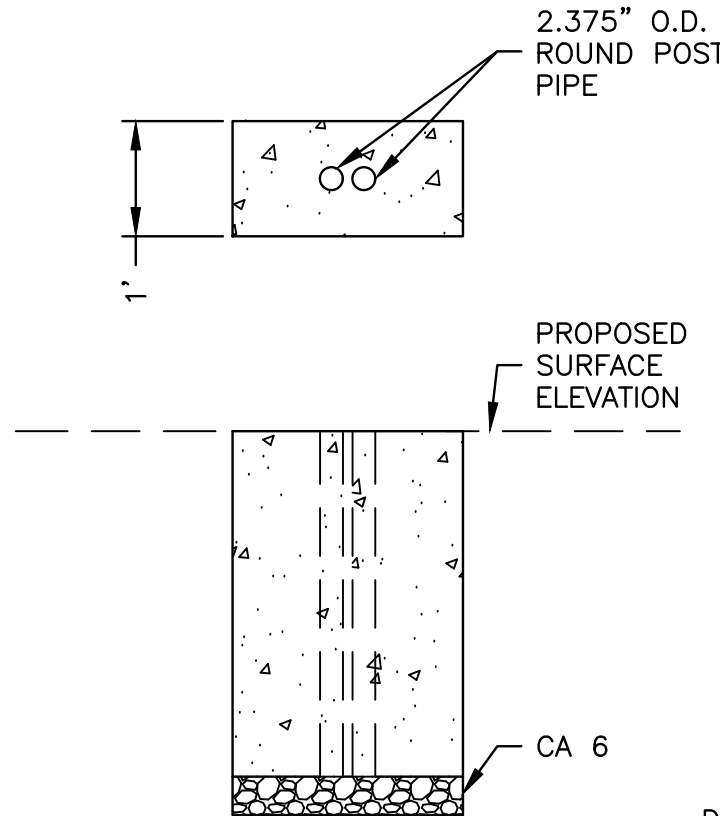
LIGHT POLE INSTALLATION DETAIL
N.T.S.



NOTE: FENCE MATERIAL; FENCING SHALL BE 2" - 9 GAUGE CHAIN LINK WITH ALUMINIZED COATING. LINE FENCE POSTS SHALL BE SPACED 10'-0" O.C. ALL ALUMINIZED COATING SHALL BE APPLIED AT 0.4 OZ./S.F. POST MATERIAL; ALL POSTS SHALL BE SCHEDULE 40 WITH 2 OZ./S.F. GALVANIZED COATING OR ALLIED SS40. CORNER END POSTS SHALL BE 3" O.D. LINE POSTS SHALL BE 2 1/2" ROUND O.D. GATE POSTS FOR 4' AND 5' LEAVES SHALL BE 3" O.D. AND GATE POSTS FOR 10' LEAVES SHALL BE 4" O.D.

FENCE INSTALLATION SHALL FOLLOW SECTION 664 OF STANDARD SPECIFICATIONS FOR ROAD AND BRIDGE CONSTRUCTION.

CHAIN LINK FENCE DETAIL
N.T.S.



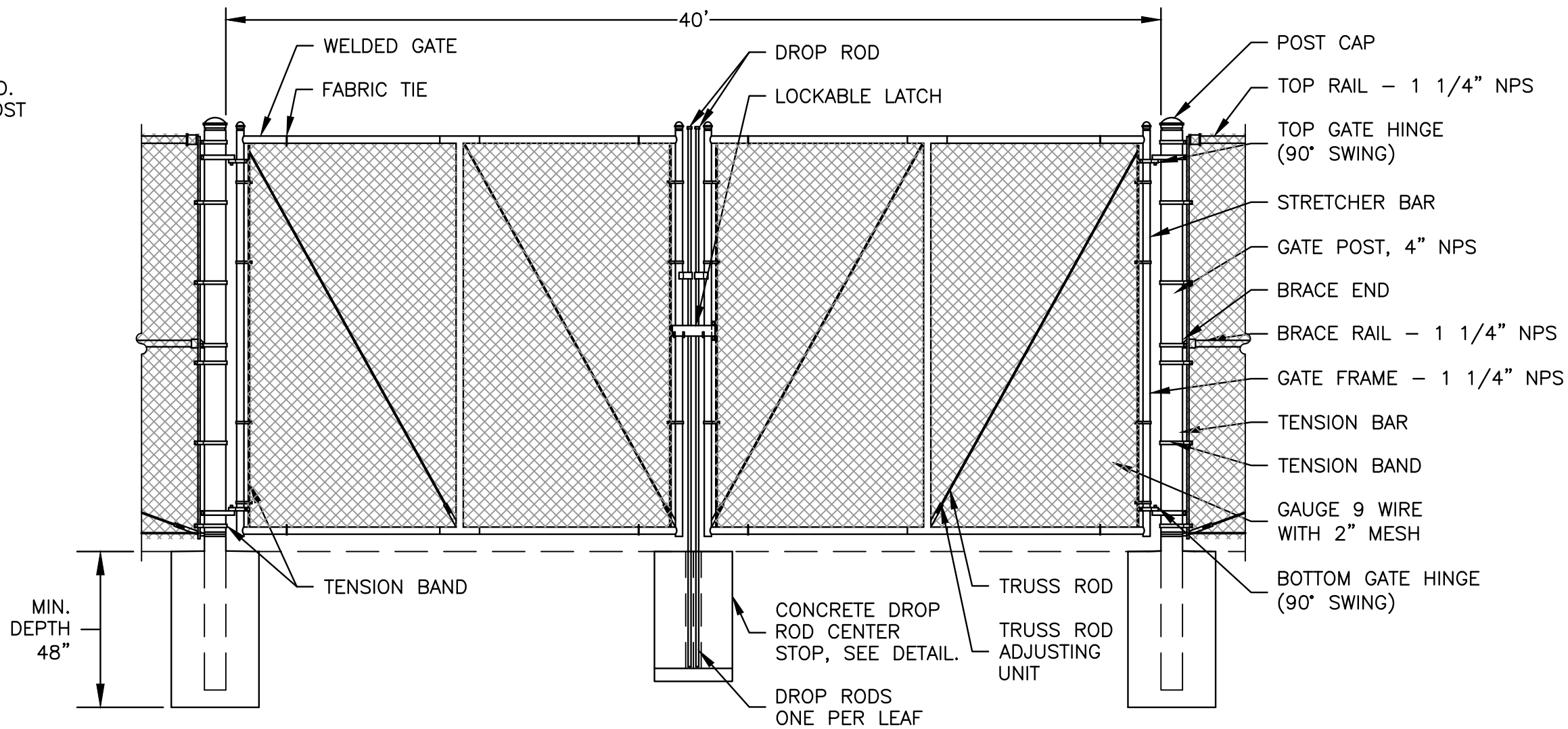
CONCRETE DROP ROD CENTER STOP DETAIL

NOTE: PIPES SHALL BE SET THROUGH CONCRETE TO ALLOW DRAINAGE TO AGGREGATE.

HORIZONTAL LOCATION SET BY CONTRACTOR TO EFFECTIVELY HOLD DOUBLE SWING GATE IN CLOSED POSITION.

DROP ROD STOPS FOR GATES IN OPEN POSITION SHALL BE TO SAME DIMENSIONS AND CONSTRUCTION WITH THE EXCEPTION THAT WIDTH x LENGTH MAY BE 1' x 1'.

CONTRACTOR SHALL FIELD VERIFY LOCATIONS OF DROP ROD STOPS FOLLOWING INSTALLATION OF GATE.



DOUBLE SWING GATE WITH CENTER DROP ROD

CHAIN LINK FENCE DOUBLE DRIVE-THRU SWING GATE WITH CENTER STOP DETAIL
N.T.S.

FEHR GRAHAM

ENGINEERING & ENVIRONMENTAL

ILLINOIS DESIGN FIRM NO. 184-003525

ILLINOIS
IOWA
WISCONSIN

OWNER/DEVELOPER:

CITY OF ROCHELLE
420 NORTH SIXTH STREET
ROCHELLE, IL 61068

PROJECT AND LOCATION:

PROPOSED TRANSLOAD YARD
EXPANSION
ROCHELLE, ILLINOIS

DRAWN BY: YJ
APPROVED BY: NJC
DATE: 03/03/23
SCALE: AS NOTED

REVISIONS		
REV. NO.	DESCRIPTION	DATE

DRAWING:

DETAILS

SET TYPE: CHANGE ORDER 1

G:\C30\20-1026A\Plans\20-1026 - Plans.dwg, DET 1E

JOB NUMBER:

20-1026A

SHEET NUMBER:

11 of .