

**cultivate**  
GEOSPATIAL



# GIS Program Update

Presented to: City of Rochelle Council

12/11/2023

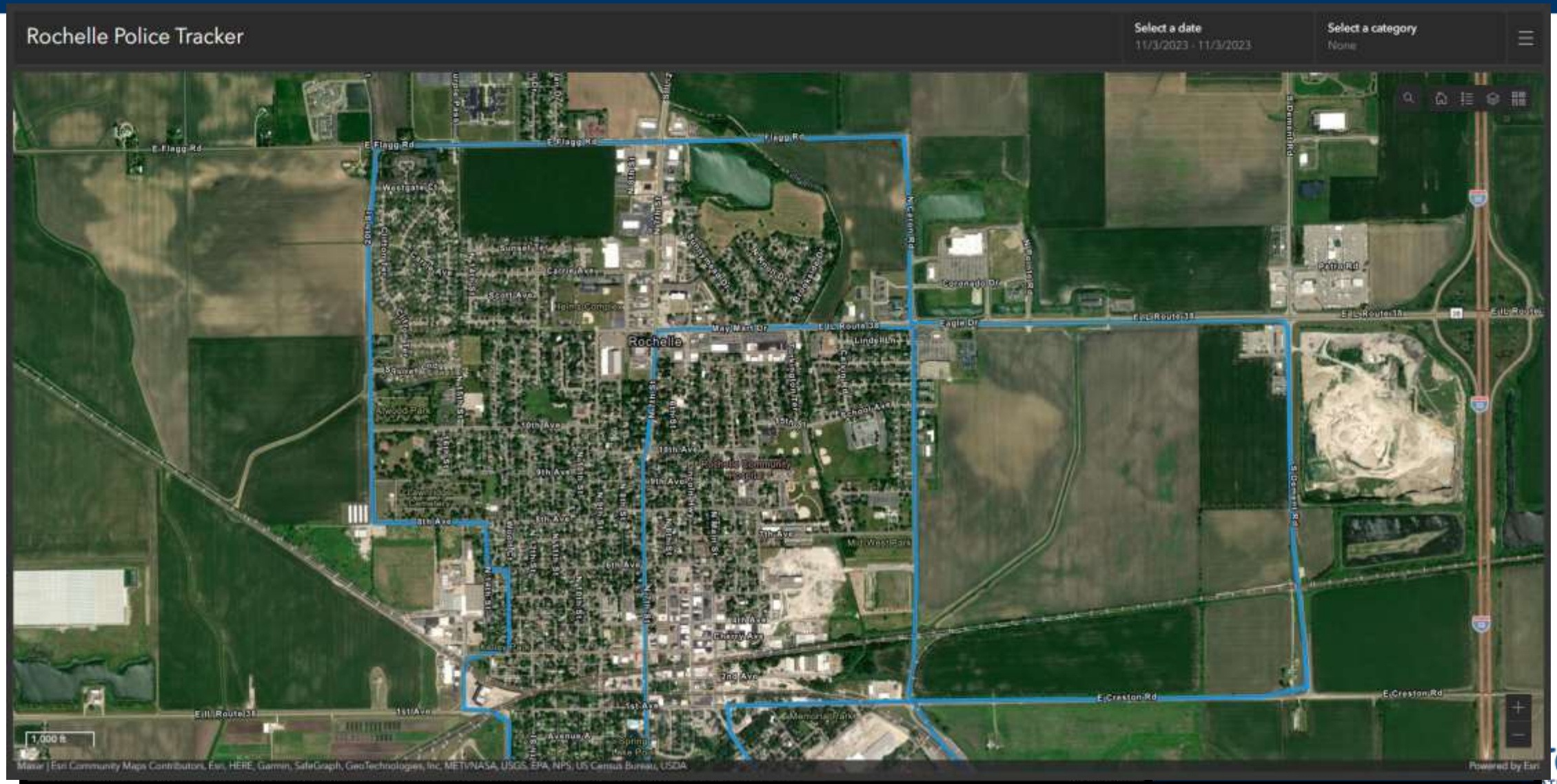
# 2023 Key GIS Program Accomplishments

2

- Near 100% daily uptime for City GIS applications and VUEWorks EAMS support
- GPS field asset verification process was simplified
- Configured Department-level Dashboards
- Fully Integrated RAS Van Collection Data in Web Applications and VUEWorks EAMS
- Application upgrades, Database cleanup and archiving; Database standardization
- Development of GIS Program Administration documentation
- Identified GIS Training Program for GIS Coordinator
- Updated Police Tracking Application



# Application Examples



# GIS Coordinator Activities

The GIS Department has been involved in many projects throughout the City in its 2nd year and has worked with the departments and the community in a multitude of ways – here are some highlights:

## “General” GIS

- Press releases and event maps for various events, construction, etc.
- Event maps made for various city events and activities (including road closures, detours, etc.).
- Utility atlases for various utility projects and site selection processes.
- Addressing standard was re-distributed to Utility Billing.
- Inventorying, cleaning out and “QC-ing” old data and instilling Quality Assurance practices for future datasets.
- Everyday maintenance for the GIS and VUEWorks: changing passwords, reporting issues, contacting the necessary parties, etc.
- Rail Fan Park Visitors Map, City-owned parcels, Sales Tax Maps, Polling Places Map, 417 W 4<sup>th</sup> Ave Map and Sketch, and others.
- Department Mission Statement and Strategic Plan created.
- Emphasis on **Collection and Training** for the year.
- GISP Certification in Progress.
- Received the 2023 Aerial Image from Ogle County

## Community Development

- Updated the Zoning Map.
- Food Truck Map.
- Comprehensive Plan Committee.

## Economic Development

- Experience builder web application and subsequent job board (with CGS) – The Experience Builder was submitted to the ESRI International Conference in July where it was voted in the top 25 of hundreds of submissions.
- Working on Mobile application of the E.B.
- QR Codes Made for easier distribution of the E.B.
- Maps for utility atlases, the I-88/I-39 Buffer analysis, and an offshoot Truck Route Map that lists the industries.

## Water/Water Rec

- Hydrant Flushing Map.
- Sewer Manhole Identification Map and Inventory.
- Water and Water Rec Web Applications.

## Electric

- Aided Sara in “cleaning out” unnecessary fields in electric data
- New RMU Service Map.
- Maps Printed for Storm Readiness.
- Overhauled the Electric databases and got users moved over to ArcPro (with training).

# GIS Coordinator Activities (Con't)

5

## Public Safety

- Police: Worked with CGS on the tracker app and getting the Toughbooks configured to be able to track in ArcGIS. Supplemental training and a How-To document was made.
- Working with Police on an internal and possibly public facing web application.
- Police: Updated station and offender maps and patrol zones.
- Fire: Updating the old maps they have in the station (W.I.P).

## Public Works/Streets

- Winter operations updates.
- Updated parking lot maps and maps for lot cleaning.
- Updated staff tablets and accounts (and provided training) for ArcGIS Field Maps.
- Created a mowing map of city ROWs and owned parcels.
- RAS Street Inventory data integration and application design.

## Engineering

- Utility atlases & Road Closure/Detour maps when needed.
- Updated the truck routes and bridge weights map and put it into the GIS – added list of industries as well.
- Moved ArcGIS users to ArcPro and provided training plan.

## Conferences, Training, and Collaborations

- VUEWorks Advanced Module Training - BaeCorps
- Servant Leadership Seminar - SGR
- "Advances in Creating a Lead Service Line Inventory" - ESRI
- ESRI Midwest User Conference – ESRI
- Enneagram Workshops - Wills
- NWS Chicago Severe Weather Webinar for Weather Spotter Training – NWS
- Effective Supervisory Practices – ICMA
- Supervisory Webinar – ICMA
- Grant Writing Workshop – NIU
- NWS/IEMA Outdoor Event Weather Planning/Monitoring Seminar – NWS
- Organizational Culture Workshops – NIU
- ESRI International User Conference – ESRI
- Rochelle-U Business Supervision Certification Program Completion
- GISP Prep and Webinars – ILGISA & GISCI
- Confined Space Rescue Rehearsal Training Scenario – City of Rochelle
- Fall MLI – Leading in Crisis Seminar
- ILGISA Annual Conference - ILGISA
- URISA GIS Leadership Academy – URIS
- Ogle County GIS Quarterly Meetings – Ogle County GIS
- Received hands on training from CGS

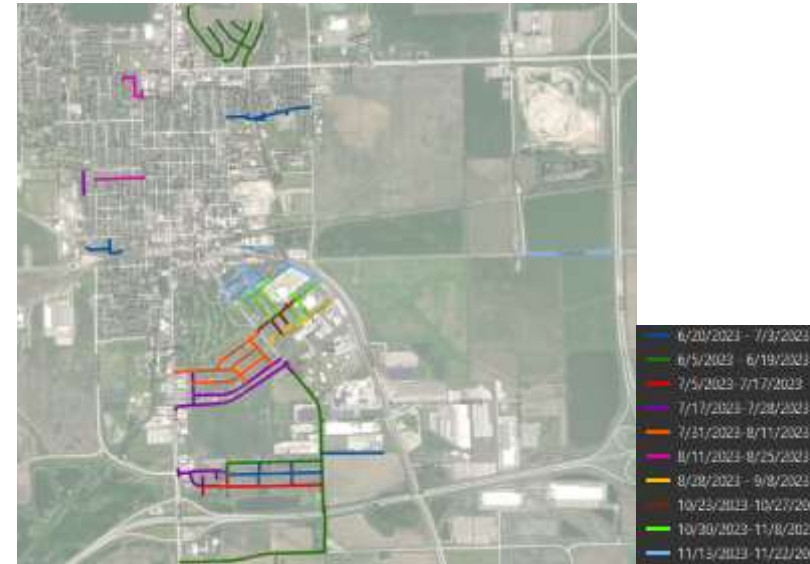
# GIS Coordinator Activities (Con't)

## Volunteering

- Job Fair Hosted by Economic Development and RCHS.
- Outdoor Market.
- Movie Night at Helms Field.
- National Night Out.
- Stuff the Squad (both days).
- Chamber of Commerce Welcome Baskets.
- Safe House Trick or Treating at the REC.

## Events

- Engaging Entrepreneurs and Young Professionals events and workshops.
- Kickin' it for a Cause Kickball Tournament.
- Rochelle Municipal Band.
- Chamber Delegates.
- Leadership Academy (2023-2024).
- Various Ribbon Cuttings.



# Looking Ahead At 2024 Goals

7

- Additional GIS Administration Training for GIS Coordinator (Mentorship)
- Additional Implementation of Smart GIS Applications
- Continue to Monitor and Improve Department Applications
- Improved Data Transparency promoting Rochelle City actions to its citizens
- Begin Data Governance Strategy



# OPEN DISCUSSION



Thank you for your continued business!