

# Official Zoning Map

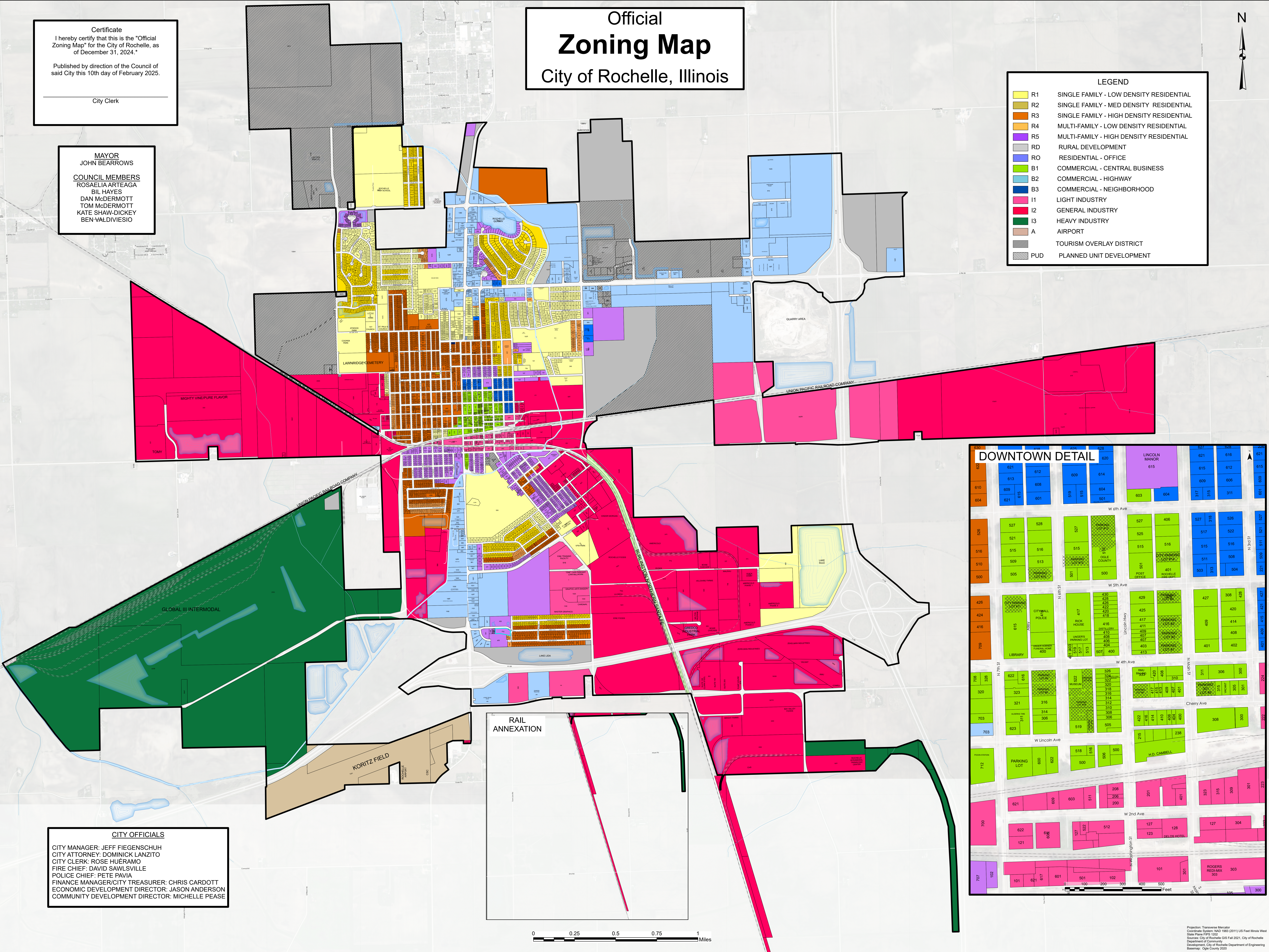
## City of Rochelle, Illinois



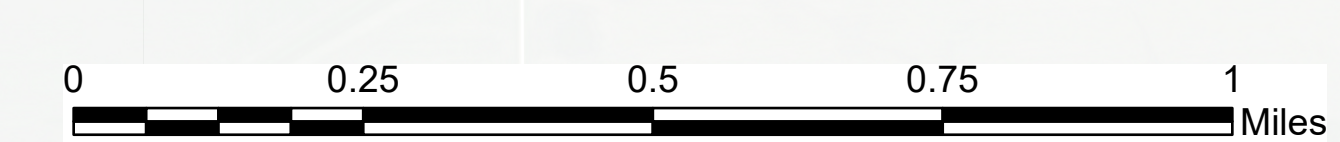
**Certificate**  
 I hereby certify that this is the "Official Zoning Map" for the City of Rochelle, as of December 31, 2024."  
 Published by direction of the Council of said City this 10th day of February 2025.  
 \_\_\_\_\_  
 City Clerk

**MAYOR**  
 JOHN BEARROWS  
**COUNCIL MEMBERS**  
 ROSALIA ARTEAGA  
 BIL HAYES  
 DAN McDERMOTT  
 TOM McDERMOTT  
 KATE SHAW-DICKEY  
 BEN VALDIVESIO

| LEGEND |   |
|--------|---|
|        | R1 SINGLE FAMILY - LOW DENSITY RESIDENTIAL  |
|        | R2 SINGLE FAMILY - MED DENSITY RESIDENTIAL  |
|        | R3 SINGLE FAMILY - HIGH DENSITY RESIDENTIAL |
|        | R4 MULTI-FAMILY - LOW DENSITY RESIDENTIAL   |
|        | R5 MULTI-FAMILY - HIGH DENSITY RESIDENTIAL  |
|        | RD RURAL DEVELOPMENT                        |
|        | RO RESIDENTIAL - OFFICE                     |
|        | B1 COMMERCIAL - CENTRAL BUSINESS            |
|        | B2 COMMERCIAL - HIGHWAY                     |
|        | B3 COMMERCIAL - NEIGHBORHOOD                |
|        | I1 LIGHT INDUSTRY                           |
|        | I2 GENERAL INDUSTRY                         |
|        | I3 HEAVY INDUSTRY                           |
|        | A AIRPORT                                   |
|        | TOURISM OVERLAY DISTRICT                    |
|        | PUD PLANNED UNIT DEVELOPMENT                |



**CITY OFFICIALS**  
 CITY MANAGER: JEFF FIEGENSCHUH  
 CITY ATTORNEY: DOMINICK LANZITO  
 CITY CLERK: ROSE HUÉRAMO  
 FIRE CHIEF: DAVID SAWLSVILLE  
 POLICE CHIEF: PETE PAVIA  
 FINANCE MANAGER/CITY TREASURER: CHRIS CARDOTT  
 ECONOMIC DEVELOPMENT DIRECTOR: JASON ANDERSON  
 COMMUNITY DEVELOPMENT DIRECTOR: MICHELLE PEASE



Projection: Transverse Mercator  
 Coordinate System: NAD 1983 2011 US Feet  
 State Plane FIPS 1202  
 Source: City of Rochelle GIS 2021, City of Rochelle Department of Community Development, City of Rochelle Department of Engineering  
 Basemap: Ogle County 2020