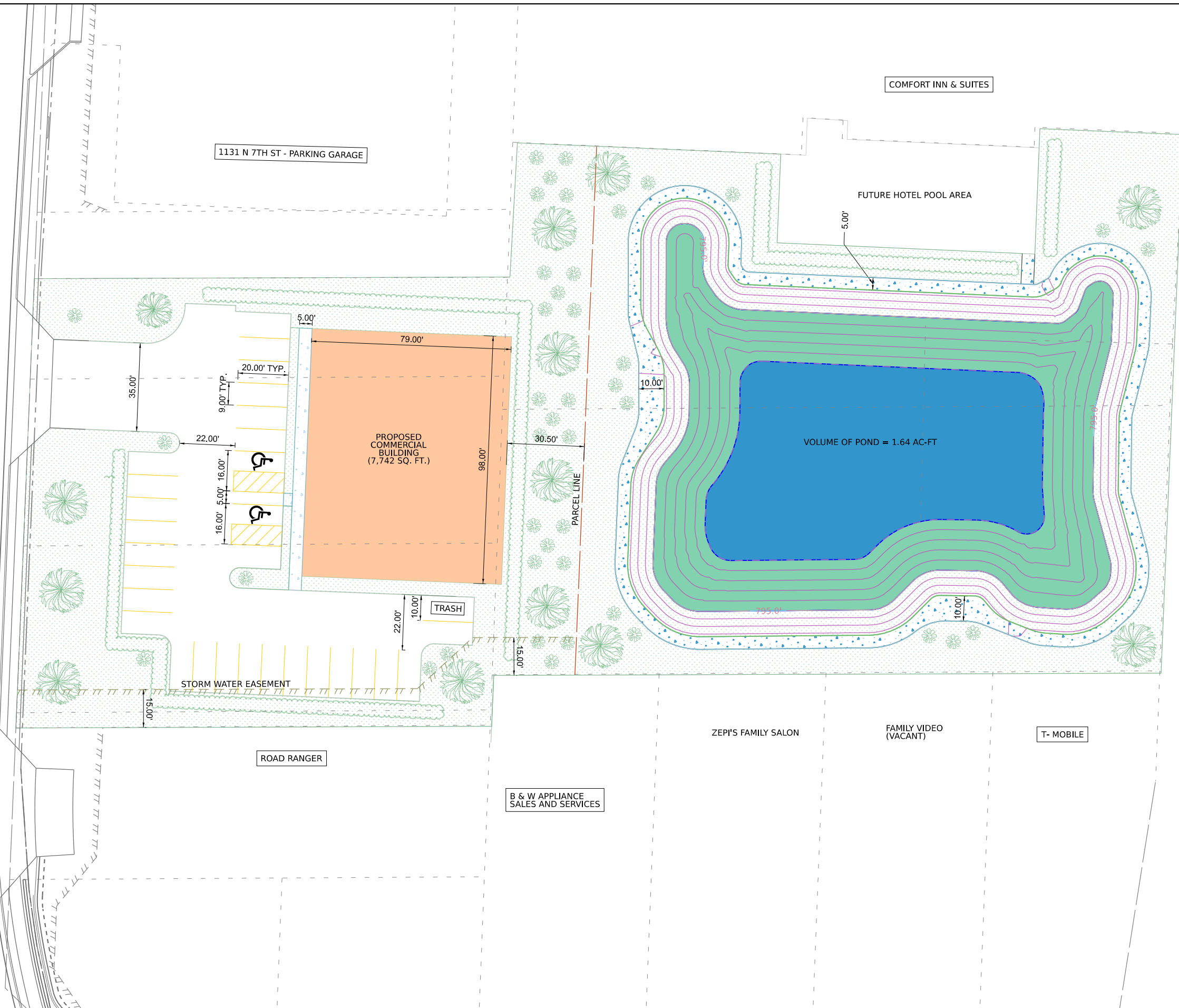


IL ROUTE 251

TILTON MANOR DR



MODEL: S:\MODEL\NAMES  
FILE NAME: STILES



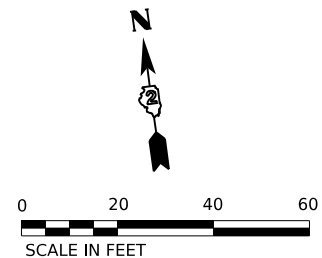
USER NAME = \$USERS	DESIGNED -	REVISED -
PLOT SCALE = \$SCALE\$	DRAWN -	REVISED -
PLOT DATE = \$DATE\$	CHECKED -	REVISED -
	DATE -	REVISED -

STATE OF ILLINOIS  
DEPARTMENT OF TRANSPORTATION

VAGABOND SUBDIVISION  
1123 N. 7TH STREET, ROCHELLE, ILLINOIS

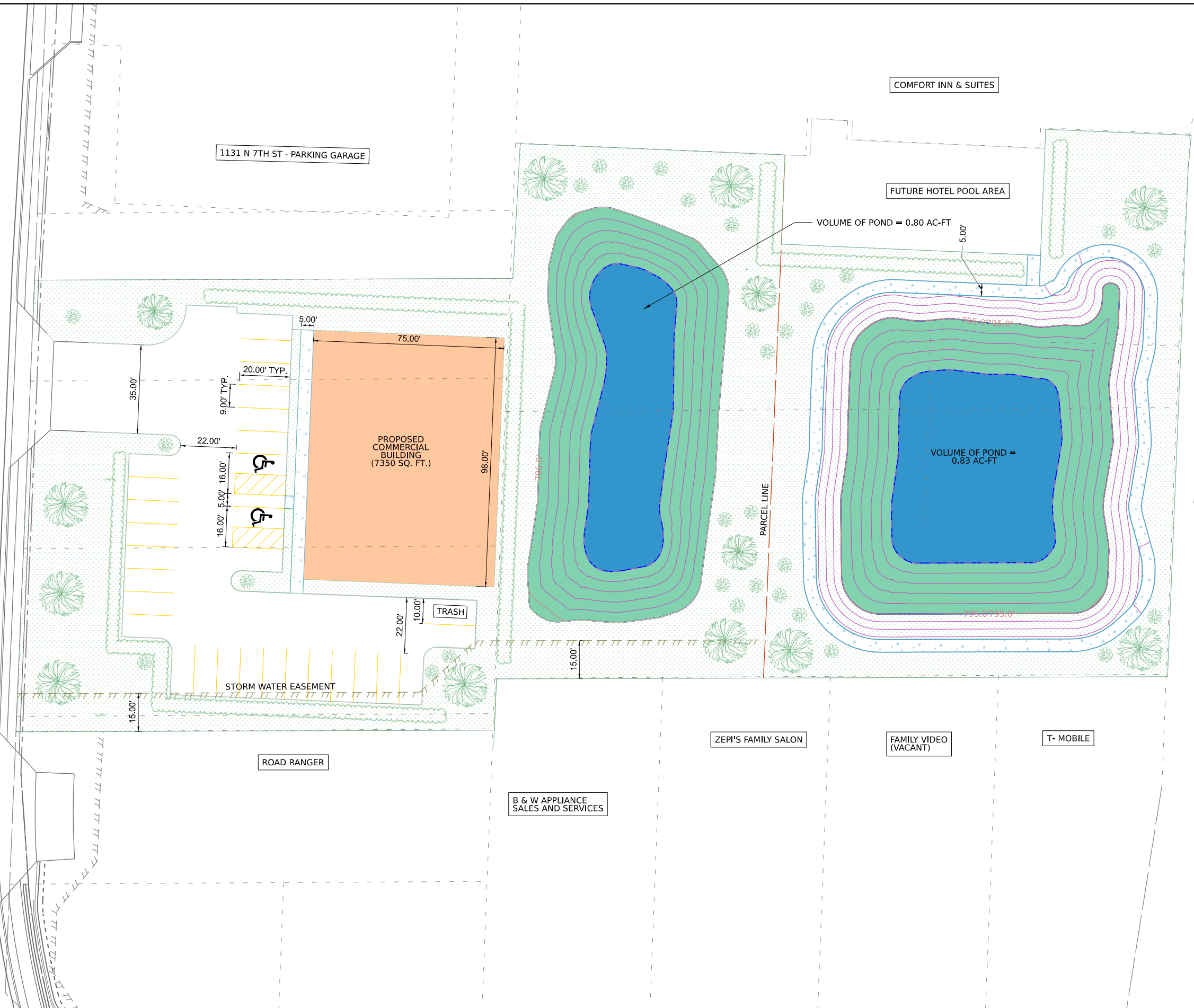
SHEET OF SHEETS STA. TO STA.

F.A.U. RTE.	SECTION	COUNTY	TOTAL SHEETS	SHEET NO.
5454	(107&108W)R	OGLE	\$TOT	
CONTRACT NO. 64B20				
ILLINOIS FED. AID PROJECT				



IL ROUTE 251

TILTON MANOR DR



MODEL: S:\MODEL\NAMES  
FILE NAME: STILES



USER NAME = \$USERS	DESIGNED -	REVISED -
PLOT SCALE = \$SCALES	DRAWN -	REVISED -
PLOT DATE = \$DATES	CHECKED -	REVISED -
	DATE -	REVISED -

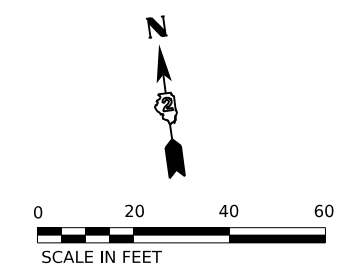
**STATE OF ILLINOIS  
DEPARTMENT OF TRANSPORTATION**

**VAGABOND SUBDIVISION  
1123 N. 7TH STREET, ROCHELLE, ILLINOIS**

SHEET OF SHEETS STA. TO STA.

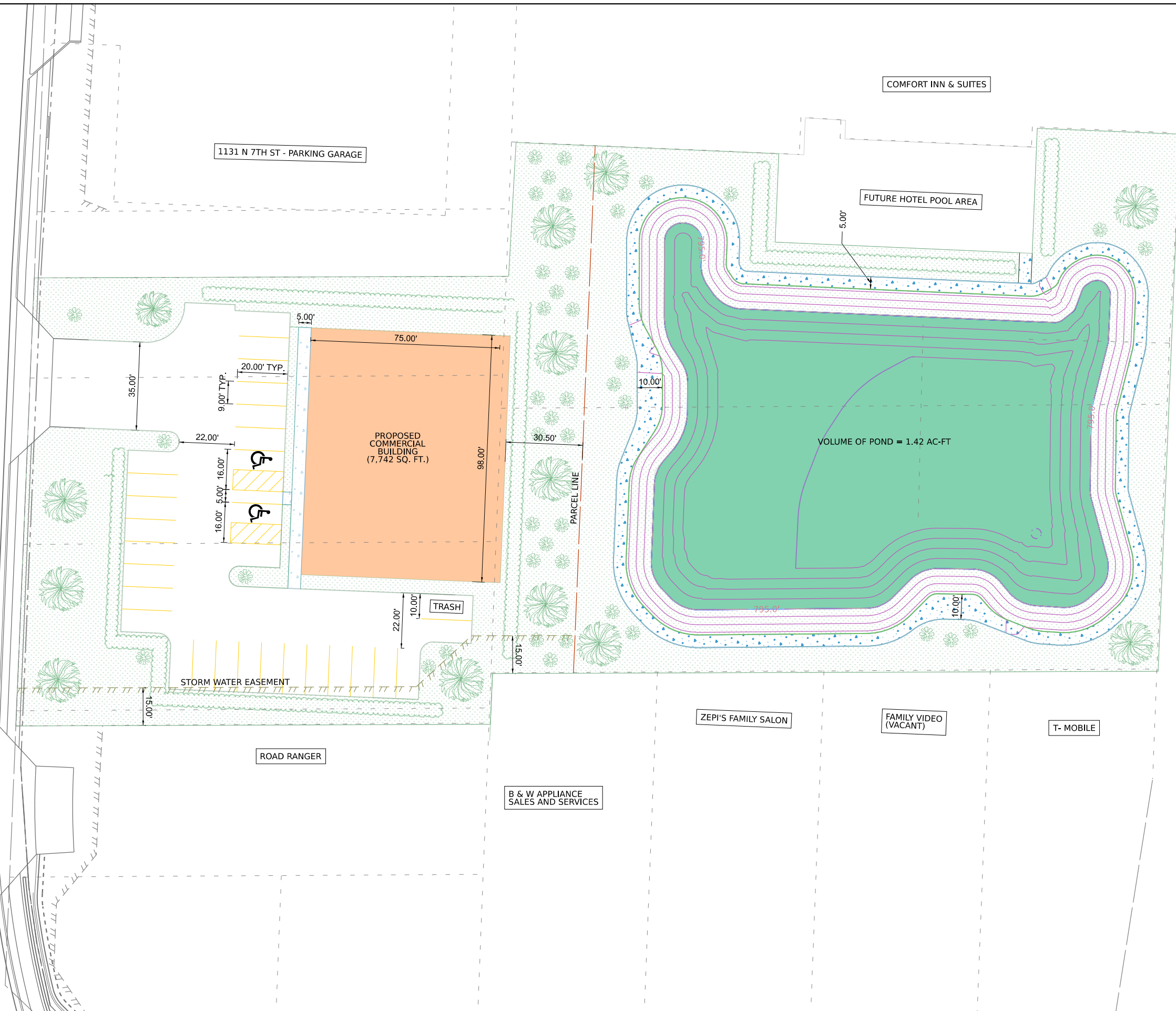
F.A.U. RTE.	SECTION	COUNTY	TOTAL SHEETS	SHEET NO.
5454	(107&108W)R	OGLE	\$TOT	
CONTRACT NO. 64B20				
ILLINOIS FED. AID PROJECT				





IL ROUTE 251

TILTON MANOR DR



1131 N 7TH ST - PARKING GARAGE

COMFORT INN & SUITES

FUTURE HOTEL POOL AREA

PROPOSED COMMERCIAL BUILDING  
(7,742 SQ. FT.)

VOLUME OF POND = 1.42 AC-FT

STORM WATER EASEMENT

ROAD RANGER

B & W APPLIANCE SALES AND SERVICES

ZEPH'S FAMILY SALON

FAMILY VIDEO (VACANT)

T-MOBILE

MODEL: \\MODEL\NAME\$  
FILE NAME: SITE.PLS



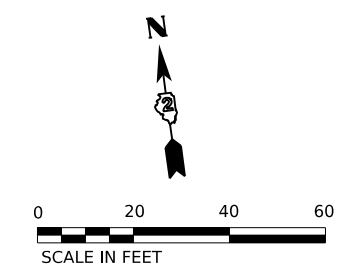
USER NAME = \$USERS	DESIGNED -	REVISED -
PLOT SCALE = \$SCALE\$	DRAWN -	REVISED -
PLOT DATE = \$DATE\$	CHECKED -	REVISED -
	DATE -	REVISED -

STATE OF ILLINOIS  
DEPARTMENT OF TRANSPORTATION

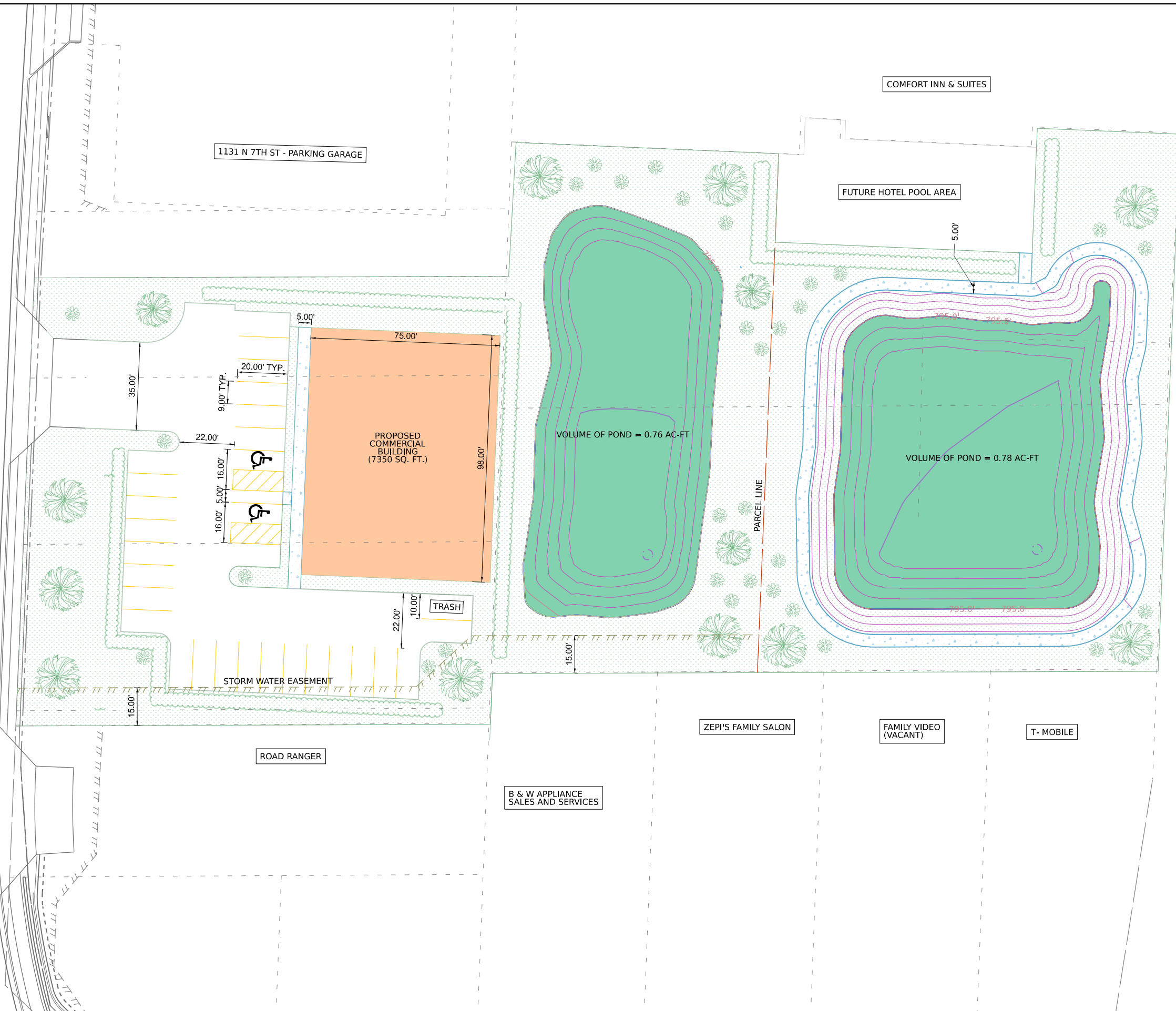
VAGABOND SUBDIVISION  
1123 N. 7TH STREET, ROCHELLE, ILLINOIS

SHEET OF SHEETS STA. TO STA.

F.A.U. RTE.	SECTION	COUNTY	TOTAL SHEETS	SHEET NO.
5454	(107&108W)R	OGLE	\$TOT	
CONTRACT NO. 64B20				
ILLINOIS FED. AID PROJECT				



IL ROUTE 251



MODEL: \\MODEL\NAME\$  
FILE NAME: \$FILE\$



USER NAME = \$USERS	DESIGNED -	REVISED -
PLOT SCALE = \$SCALE\$	DRAWN -	REVISED -
PLOT DATE = \$DATE\$	CHECKED -	REVISED -
	DATE -	REVISED -

STATE OF ILLINOIS  
DEPARTMENT OF TRANSPORTATION

VAGABOND SUBDIVISION  
1123 N. 7TH STREET, ROCHELLE, ILLINOIS

SHEET OF SHEETS STA. TO STA.

F.A.U. RTE.	SECTION	COUNTY	TOTAL SHEETS	SHEET NO.
5454	(107&108W)R	OGLE	\$TOT	
CONTRACT NO. 64B20				
ILLINOIS FED. AID PROJECT				