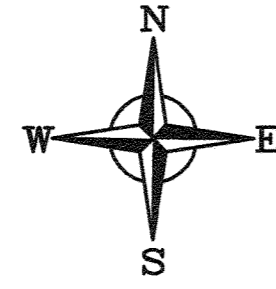


**PRELIMINARY PLAT OF
(NOT FOR RECORD)
Central Subdivision**
PART OF THE NORTHEAST QUARTER
OF THE NORTHWEST QUARTER OF
SECTION 24, TOWNSHIP 40 NORTH
RANGE 1 EAST OF THE THIRD
PRINCIPAL MERIDIAN, IN THE CITY
OF ROCHELLE, THE COUNTY OF OGLE
AND THE STATE OF ILLINOIS
2023



LEGEND

- BOUNDARY OF PROPERTY
- FOUND MONUMENT
- SET 5/8" REBAR
- SET MAG/SURVEY NAIL
- FENCE LINE
- ROAD CENTERLINE
- ROAD RIGHT-OF-WAY LINE
- SECTION LINE
- GAS LINE
- OVERHEAD ELECTRIC LINE
- TELEPHONE LINE
- UTILITY EASEMENT LINE
- BUILDING SETBACK LINE
- WATERMAIN
- SANITARY SEWER
- ACCESS / UTILITY EASEMENT LINE
- CROSS ACCESS EASEMENT
- STORM MANHOLE
- CATCH BASIN
- CURB INLET
- SANITARY MANHOLE
- WATER VALVE
- VALVE VAULT
- FIRE HYDRANT
- GAS METER
- UTILITY POLE
- GUY WIRE
- UTILITY POLE/LIGHT
- 1 POST SIGN
- HANDICAP
- GAS VALVE

LEGAL DESCRIPTION

OF PROPERTY DESCRIBED AS: Part of Block 1 of May Mart Subdivision in the City of Rochelle, being a subdivision of part of the Northeast Quarter of the Northwest Quarter and part of the Northwest Quarter of the Northeast Quarter of Section 24, as recorded in Book "H" of Plats, page 38 in the Recorder's Office of Ogle County, Illinois and part of the Northeast Quarter of the Northwest Quarter of Section 24, all in Township 40 North, Range 1 East of the Third Principal Meridian, bounded and described as follows:

Beginning at the Southwest Corner of Block 1 of said May Mart Subdivision; thence South 88 degrees 19 minutes 37 seconds West along the North Line of May Addition to the City of Rochelle, a distance of 165.00 feet to the Northwest Corner of Lot 21 of said May Addition, also being the East Line of J. O. McConaughy Subdivision; thence North 01 degree 55 minutes 25 seconds West along said East Line, a distance of 160.00 feet; thence North 88 degrees 19 minutes 36 seconds East, a distance of 165.90 feet to the West Line of Block 1 of said May Mart Subdivision; thence North 01 degree 36 minutes 01 seconds West along said West Line, a distance of 121.66 feet to the Northwest Corner of said Block 1; thence North 88 degrees 22 minutes 27 seconds East along the North Line of said Block 1 and the Southerly Right-of-Way Line of a public road designed Illinois Route 38, a distance of 140.03 feet; thence South 01 degrees 08 minutes 05 seconds East, a distance of 152.44 feet to North Line of an existing line of concrete columns; thence South 88 degrees 19 minutes 30 seconds West along said North Line, a distance of 38.13 feet to the Northerly projection of the centerline of an existing concrete block wall; thence South 01 degree 40 minutes 29 seconds East along said centerline and the Southerly projection thereof, a distance of 129.11 feet to the South Line of said Block 1; thence South 88 degrees 19 minutes 37 seconds West along said South Line, a distance of 100.83 feet to the Point of Beginning, containing 1.394 acres, more or less, subject to all easements, agreements, city codes and/or ordinances of record, if any, all situated in the City of Rochelle, the County of Ogle and the State of Illinois.

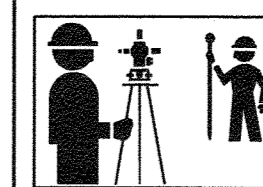
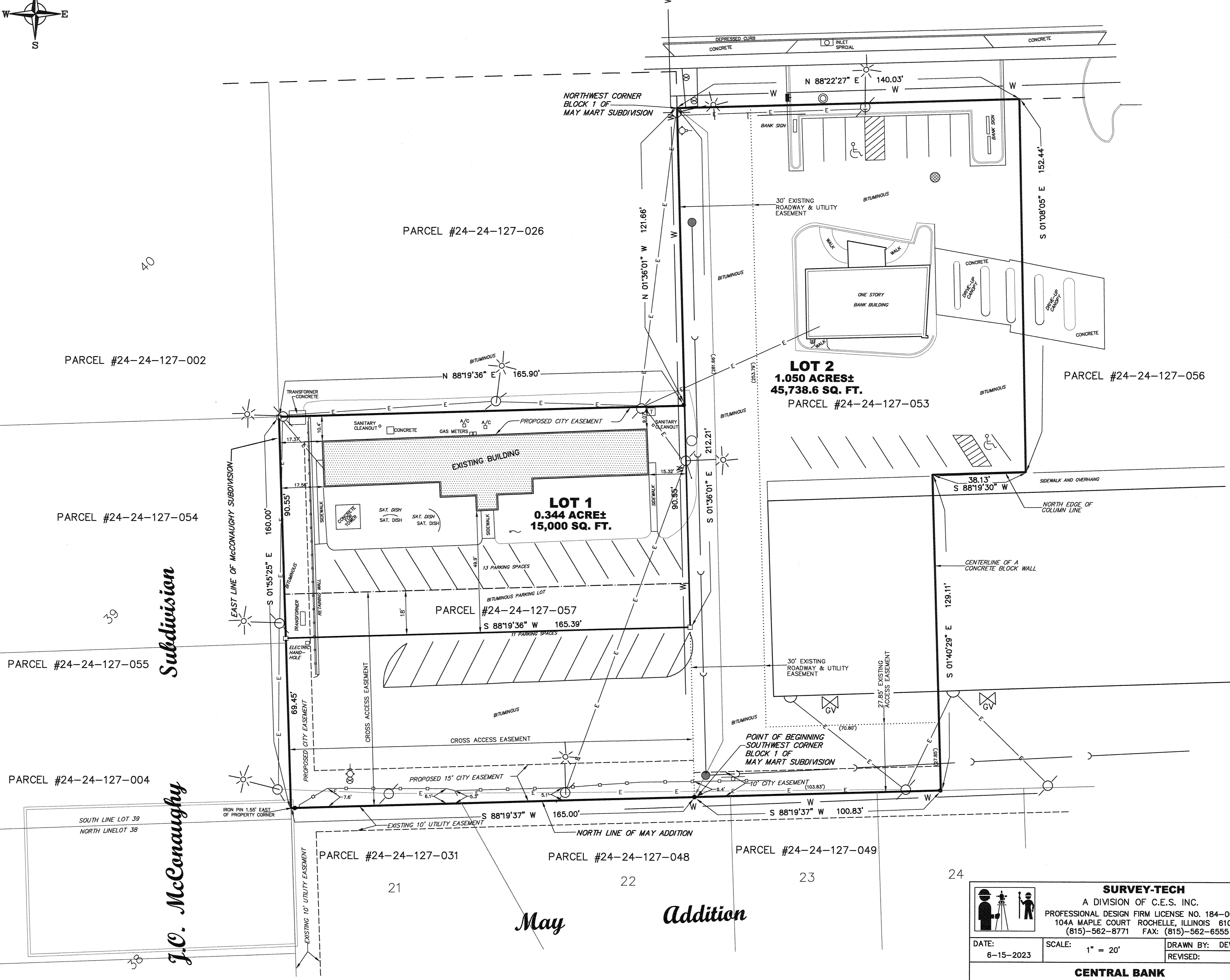
HIGHWAY

LINCOLN

Subdivision

J.O. McConaughy

ILLINOIS ROUTE 38



SURVEY-TECH

A DIVISION OF C.E.S. INC.
PROFESSIONAL DESIGN FIRM LICENSE NO. 184-001260
104A MAPLE COURT ROCHELLE, ILLINOIS 61068
(815)-562-8771 FAX: (815)-562-6555

DATE: 6-15-2023 SCALE: 1" = 20' DRAWN BY: DEW
REVISED:

CENTRAL BANK

FB: O-GPS CITY OF ROCHELLE FILE NUMBER:
ACAD: S33622PRELIM OGLE COUNTY S336-22