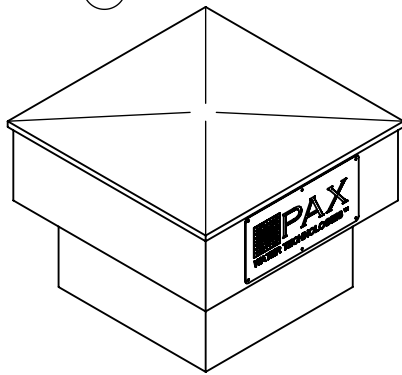
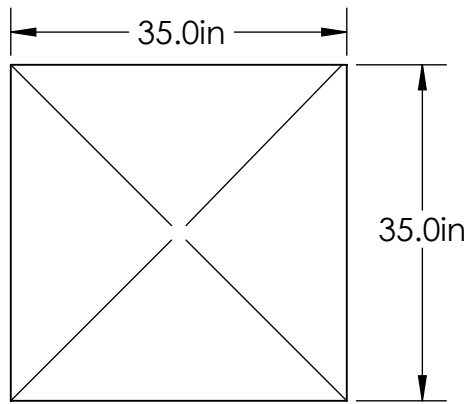


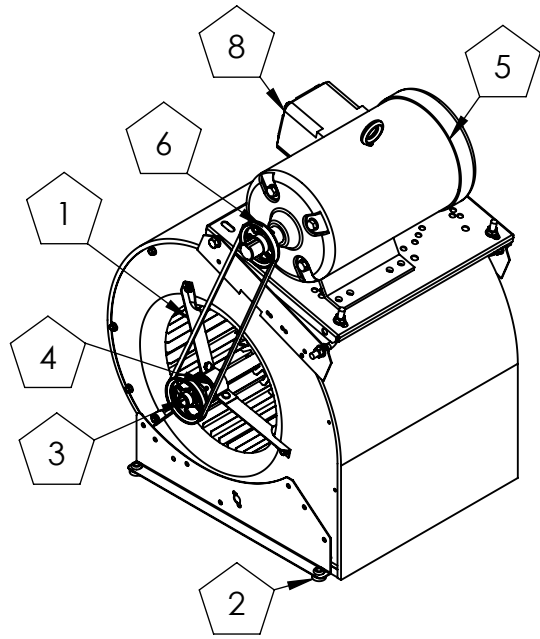
3-A PPV-200 POWER VENT ISO



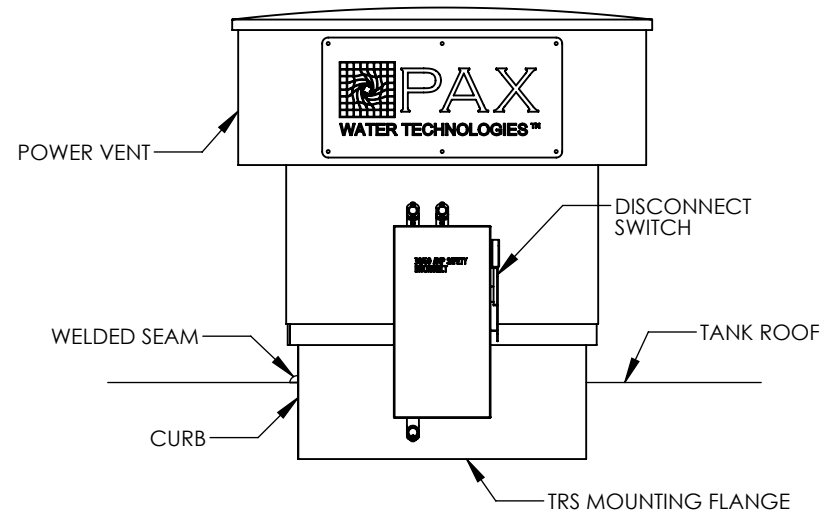
3-B PPV-200 POWER VENT PLAN & PROFILE



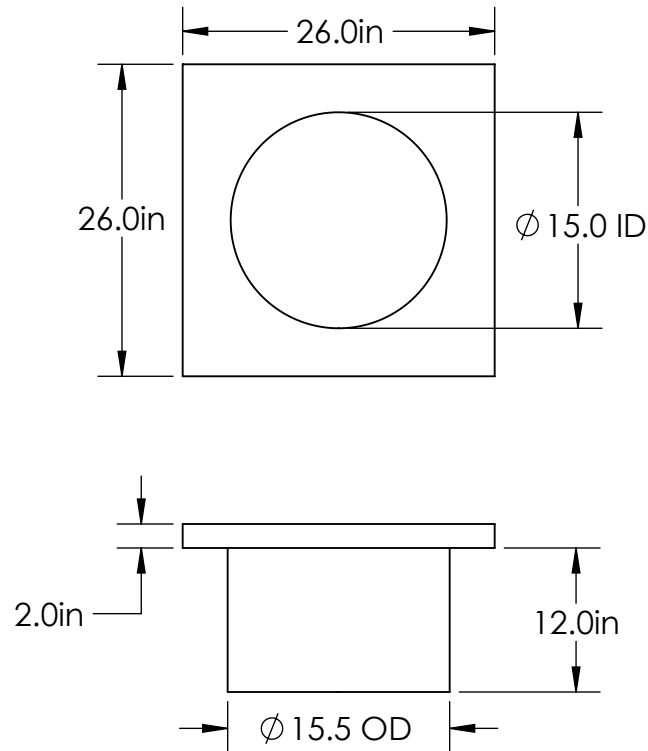
3-D PPV-200 FAN AND MOTOR ASSEMBLY



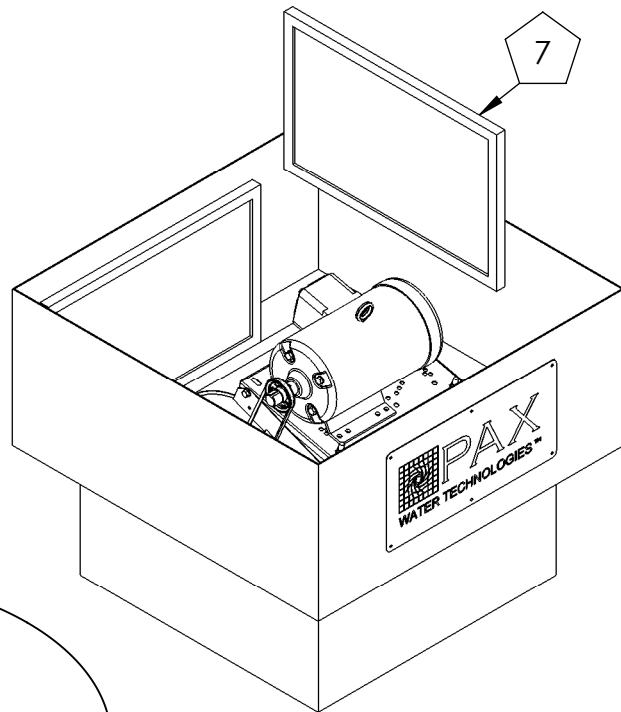
3-E PPV-200 POWER VENT MOUNTED ON FLANGE



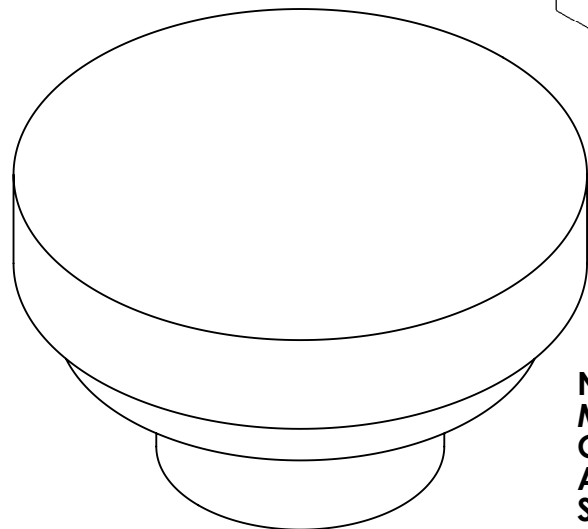
3-F PPV-200 POWER VENT MOUNTING FLANGE PLAN & PROFILE



3-F PPV-200 POWER VENT INTERIOR



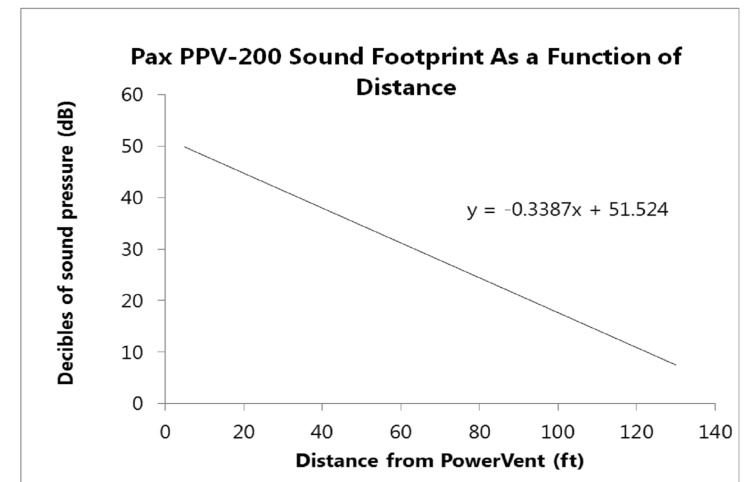
3-G MAKEUP VENT



**NOTE:**  
MAKEUP VENT SHALL BE COMPLIANT WITH ALL APPLICABLE AWWA AND STATE STANDARDS

**NOTES:**

- MOTOR = 1/4HP
- POWER VENT REQUIRES 240VAC SINGLE PHASE, 1/4HP MOTOR DRAWS 4.6 AMPS FLA
- HOOD COVER** - EASILY REMOVED FOR ACCESS TO MOTOR COMPARTMENT AND DRIVE ASSEMBLY; CONSTRUCTED OF GALVANIZED STEEL (RSF) OR ALUMINUM (RSFP).
- LOUVERS** - (RSFP) HEAVY GAUGE EXTRUDED ALUMINUM LOUVERS WITH MITERED CORNERS FOR A CLEAN LOOK WITH MINIMA RESISTANCE TO AIRFLOW.
- GALVANIZED SIDES** - (RSF) HEAVY GAUGE GALVANIZED STEEL SIDES.
- LATCHES** - QUICK RELEASE HOOD COVER LATCHES.
- 1 STEEL WHEEL** - DOUBLE WIDTH FORWARD CURVED CENTRIFUGAL STEEL WHEEL IS UTILIZED TO GENERATE HIGH EFFICIENCY AND MINIMAL SOUND.
- 2 VIBRATION ISOLATION** - DOUBLE STUDDED TRUE VIBRATION ISOLATORS SUPPORT THE DRIVE ASSEMBLY AND WHEEL FOR LONG LIFE AND QUIET OPERATION.
- 3 FAN SHAFT** - PRECISELY SIZED, GROUND AND POLISHED SO THE FIRST CRITICAL SPEED IS AT LEAST 25 PERCENT OVER THE MAXIMUM OPERATION SPEED.
- 4 BEARINGS** - 100 PERCENT FACTORY TESTED AND DESIGNED SPECIFICALLY FOR AIR HANDLING APPLICATIONS WITH A MINIMUM L50 LIFE IN EXCESS OF 200,000 HOURS.
- 5 MOTOR** - CAREFULLY MATCHED TO THE FAN AND IS MOUNTED OUT OF AIRSTREAM. **DRIVE FRAME** - A SCREW ADJUSTMENT ALLOWS THE MOUNT TO PIVOT FOR EASE OF MAINTAINING PROPER BELT TENSION.
- 6 DRIVE ASSEMBLY** - BELTS, PULLEYS AND KEYS ARE OVERSIZED 150 PERCENT OF DRIVEN HORSEPOWER. MACHINED CAST PULLEYS ARE ADJUSTABLE FOR FINAL SYSTEM BALANCING. BELTS ARE STATIC FREE AND OIL RESISTANT.
- 7 FILTERS** - PERMANENT, WASHABLE ALUMINUM ONE-INCH FILTERS ARE STANDARD. TWO-INCH FILTERS ARE AVAILABLE. FILTERS ARE RATED MERV 4.
- 8 DISCONNECT SWITCH** - NEMA-1 SWITCH IS FACTORY MOUNTED AND WIRING IS PROVIDED FROM THE MOTOR TO THE DISCONNECT ENCLOSURE AS STANDARD. ALL WIRING AND ELECTRICAL COMPONENTS COMPLY WITH THE NATIONAL ELECTRICAL CODES (NEC) AND ARE UL LISTED OR RECOGNIZED.



DIMENSIONS ARE IN INCHES [MILLIMETERS] UNLESS OTHERWISE NOTED			
TOLERANCES UNLESS OTHERWISE NOTED			
INCHES	MILLIMETERS	<b>POWER VENT COMPONENTS</b>	
.XX ± .01	.X ± .25		
.XXX ± .005	.XX ± .13		
.005/.010 BREAK EDGES	.13/.25 BREAK EDGES		
.005/.010 INTERNAL RADII	.13/.25 INTERNAL RADII		
DIAMETERS CONCENTRIC WITHIN ±.005	DIAMETERS CONCENTRIC WITHIN ±.13	TITLE: <b>POWER VENT COMPONENTS</b>	
HOLES ±.005	HOLES ±.13	SIZE: <b>B</b> PRODUCT: <b>TRS 24</b> REV: <b>A</b>	
ANGLES ± 1°	ANGLES ± 1°	WWW.PAXWATER.COM SHEET: <b>3 OF 7</b>	
MACHINED SURFACES TO BE $\sqrt{63}$ RMS EXCEPT AS NOTED			
INTERPRET DIMS/TOLERANCES PER ANSI/ASME Y14.5-1994 DO NOT SCALE DRAWING			