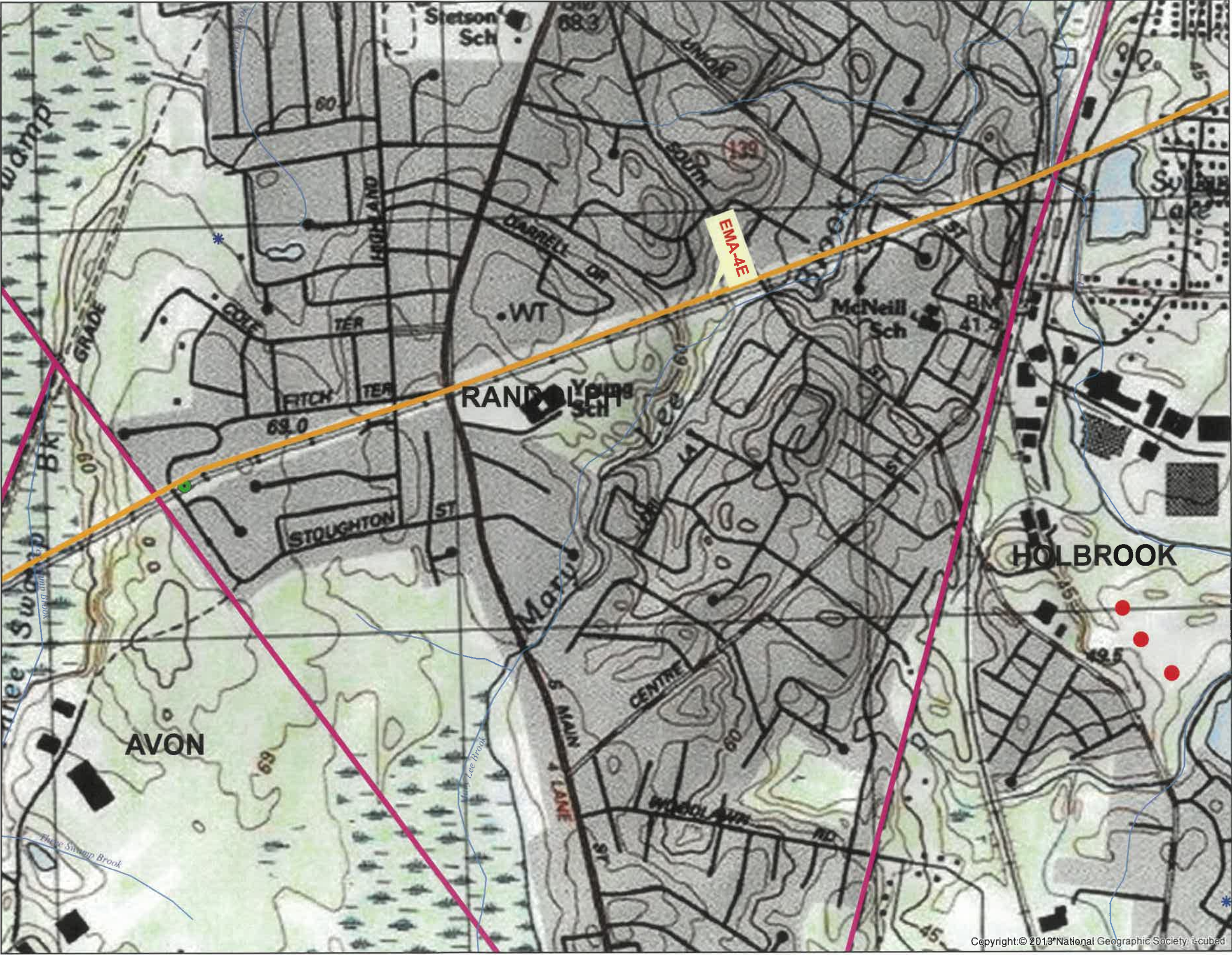


Eversource Energy  
Eastern, MA  
2024 Yearly  
Operational Plan  
**RANDOLPH**  
Rights of Way  
EMA-4E



- 2024 Eversource Rights of Way
- Emergency Surface Water Well
- Ground Water Well
- Non-Transient, Non-Community Well
- Proposed Well
- Surface Water Well
- Transient, Non-Community Well
- Private Well
- NHESP Certified Vernal Pools
- Perennial Rivers and Streams
- Intermittent Rivers and Streams
- Mass Town Lines
- Mass Zone A (identifies surface waterbodies, tributaries and associated waterbodies, follow Sensitive Area treatment methods per 333 CMR 11.04)

Source: "Office of Geographic and Environmental Information (Mass GIS), Commonwealth of Massachusetts, Executive Office of Energy and Environmental Affairs"  
Public Water Supply data provided by MA DEP Drinking Water Program, October 2023 DEP Public Water Supplies

Copyright: © 2013 National Geographic Society, i-cubed