



9 SHORT ST, RANDOLPH, MA

EXTERIOR RENOVATIONS



EXTERIOR RENOVATION CALL OUTS

1. Existing brick will be painted BM Amherst Gray HC-167 with contrasting accents of BM Black 2132-10. The rendering suggests the application for the paint.
2. Cut sheets have been provided for the front windows in this package of submittal.
3. Clapboard on the front of the building to be painted BM
4. Down lights on the front of the building are Cylinder Outdoor Up/Down Wall Sconce by Kichler, specs have been included in this packet.
5. The panel behind the front lights is the existing material, to be painted the BM Black 2132-10.
6. The new logo and restaurant sign will be applied the existing sign frame. Colors are black and white.
7. Fencing and gates at rear will be white vinyl 6'H x 8'W purchased from Lowes. Product information included in this packet.
8. The new rear decking and stairs will be pressure treated lumber material.
9. The porch railing will be deck mounted cable railing components, specs attached.









PORTAL INC.
10 TRACY DRIVE- AVON, MA. 02322

**SERIES
4600**

SERIES 4600

2" X 4-1/2" THERMAL FLUSHGLAZED FOR 1" GLAZING

INDEX: _____	1
ELEVATIONS: _____	2
JAMBS: _____	3
HORIZONTALS: _____	4
ALT. HORIZONTALS: _____	5
TRANSOM BARS: _____	6
CORNER POSTS: _____	7
SPECIFICATIONS & DESIGN DATA: _____	8

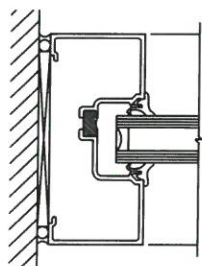
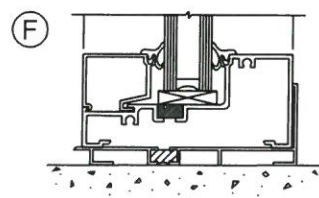
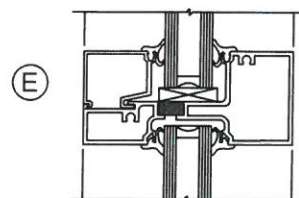
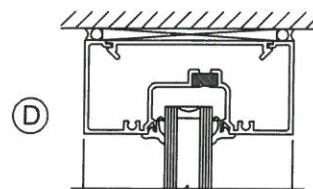
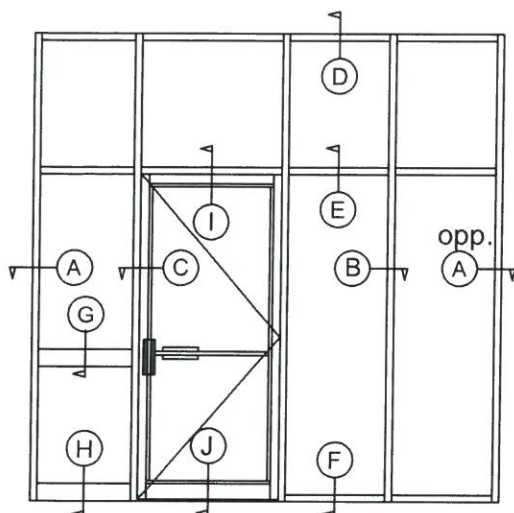


PORTAL INC.

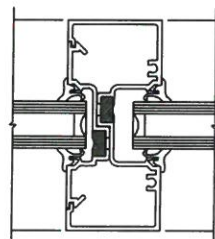
10 TRACY DRIVE- AVON, MA. 02322

SERIES
4600

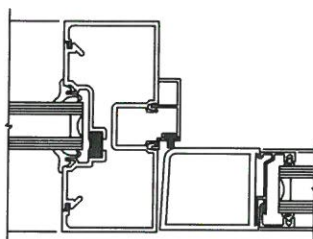
Quarter size details



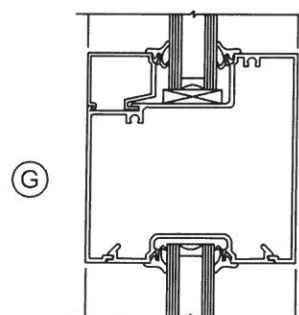
(A)



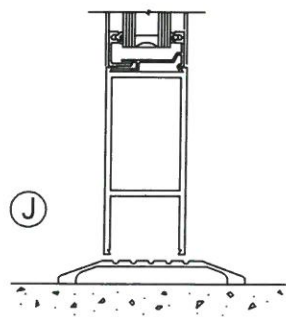
(B)



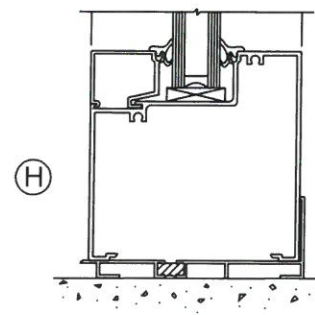
(C)



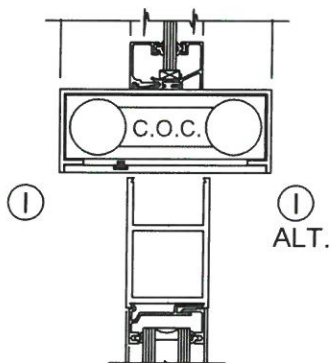
(G)



(J)

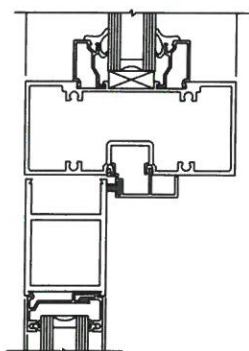


(H)



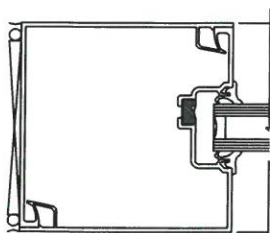
(I)

ALT.

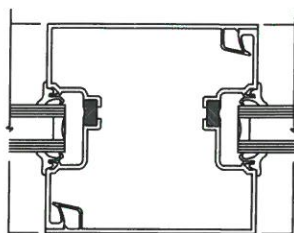


(I)

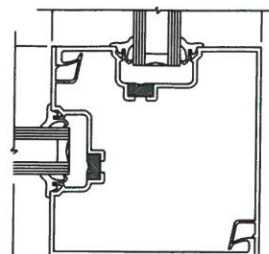
CORNER POSTS:



(K)



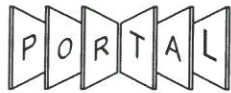
(L)



(M)

PH: 800-966-3030 / www.portalincorporated.com

4600-2

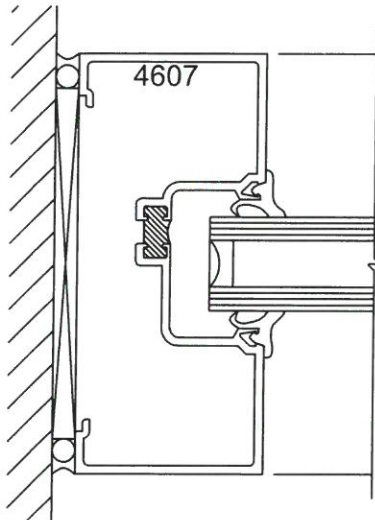


PORTAL INC.

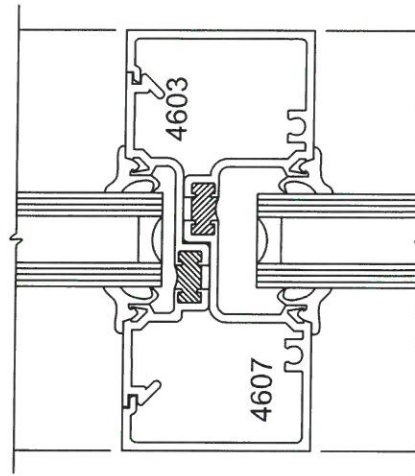
10 TRACY DRIVE- AVON, MA. 02322

SERIES
4600

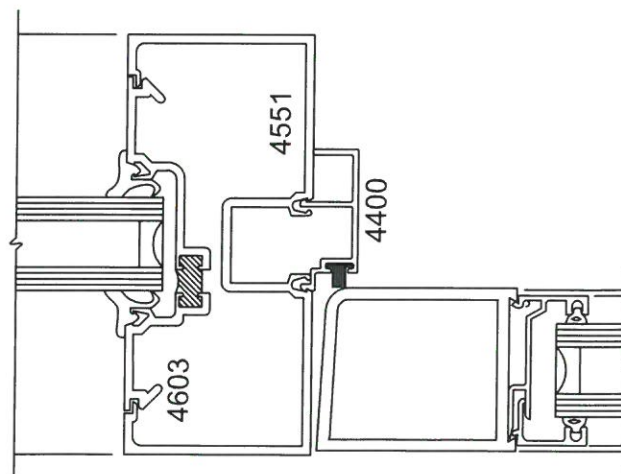
Full size details



(A) JAMB



(B) MULLION



(C) DOOR JAMB



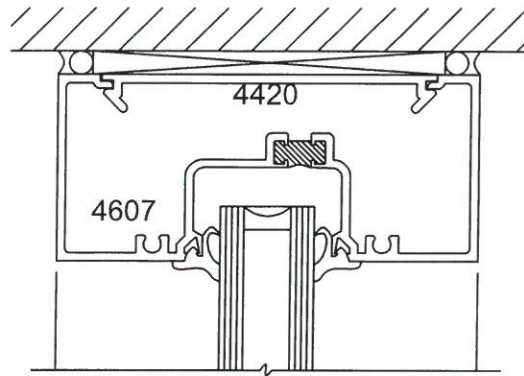
PORTAL INC.

10 TRACY DRIVE- AVON, MA. 02322

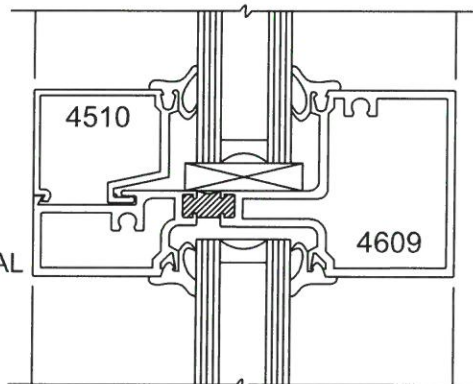
SERIES
4600

Full size details

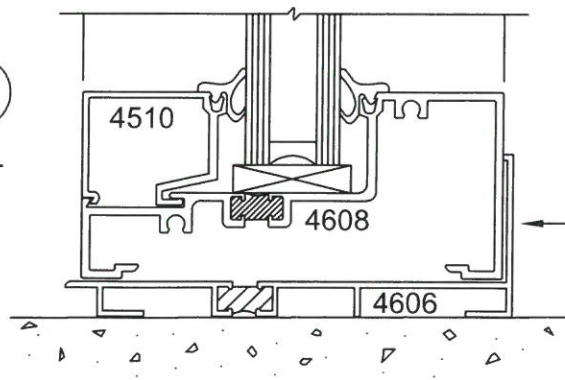
(D)
HEAD



(E)
HORIZONTAL



(F)
SILL



← RECOMMENDED
SUB SILL.



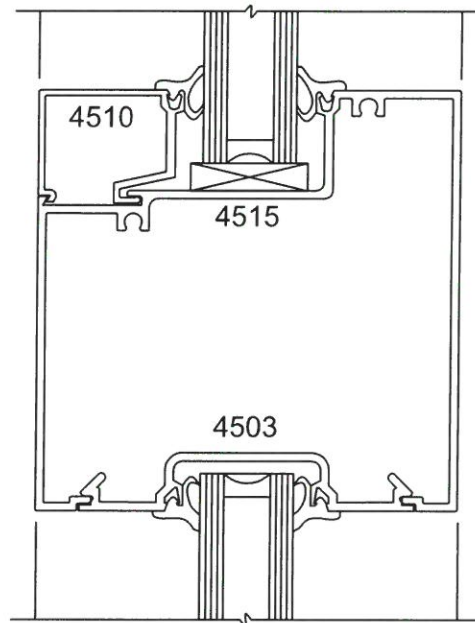
PORTAL INC.

10 TRACY DRIVE- AVON, MA. 02322

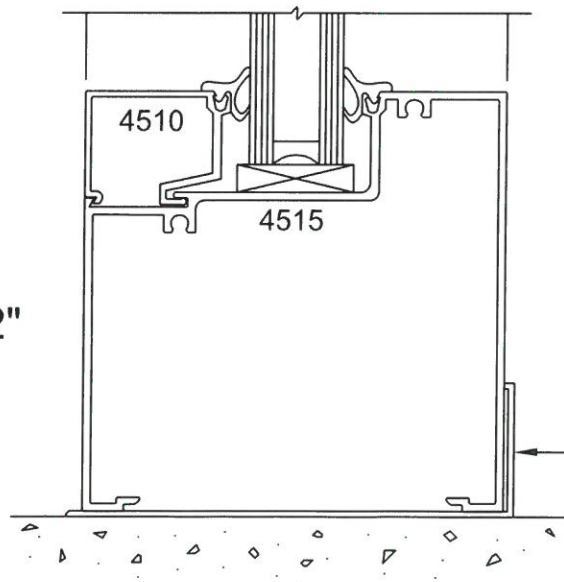
SERIES
4600

Full size details

(G)
4-1/2" X 4-1/2"
HORIZONTAL



(H)
4-1/2" X 4-1/2"
SILL



RECOMMENDED SILL
FLASHING #4406.

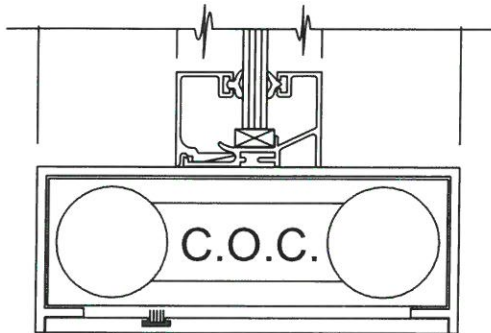


PORTAL INC.

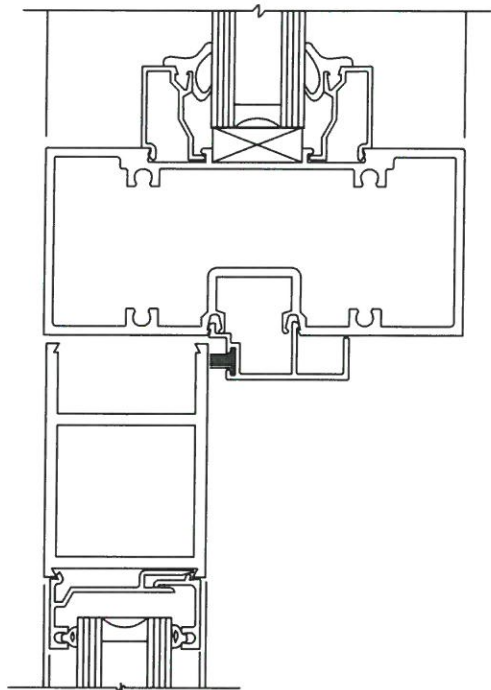
10 TRACY DRIVE- AVON, MA. 02322

SERIES
4600

Full size details

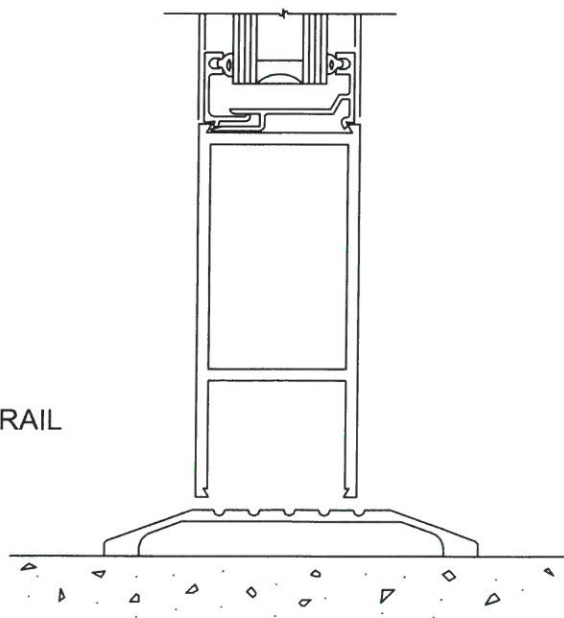


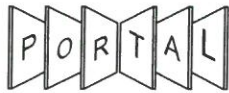
①
TRANSOM BAR



①
ALT.
TRANSOM BAR

②
BOTTOM RAIL



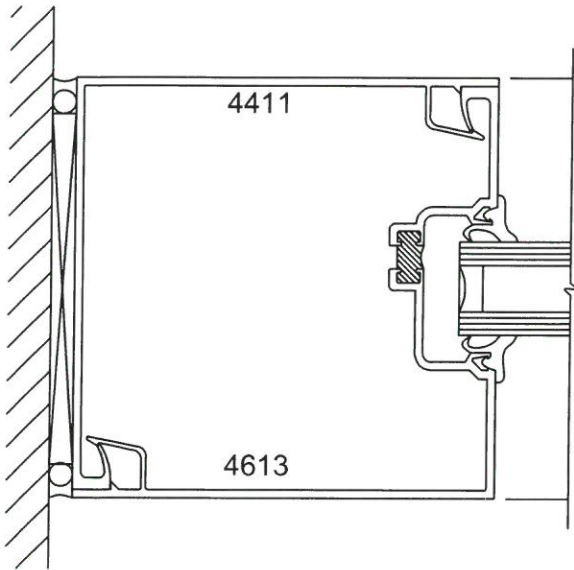


PORTAL INC.

10 TRACY DRIVE- AVON, MA. 02322

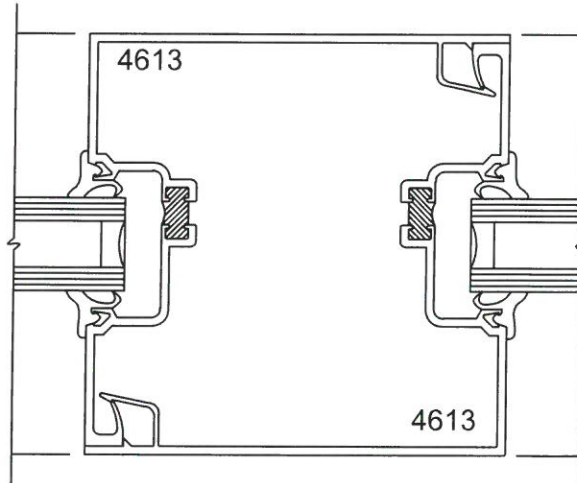
SERIES
4600

Full size details



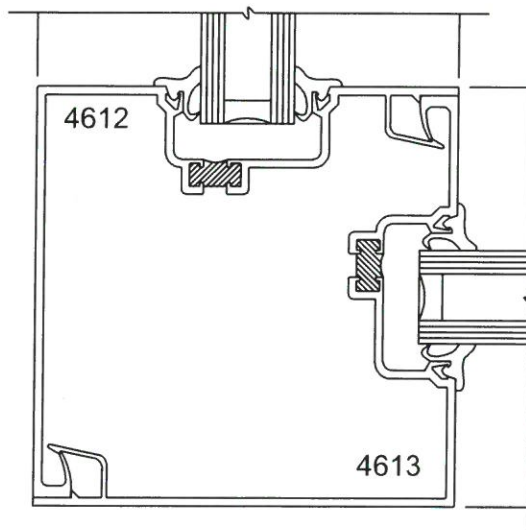
(K)

4-1/2" X 4-1/2" JAMB



(L)

4-1/2" X 4-1/2" MULLION



(M)

4-1/2" X 4-1/2" CORNER



PORTAL INC.

10 TRACY DRIVE- AVON, MA. 02322

SERIES
4600

SPECIFICATIONS

SERIES 4600

1" THERMAL FLUSH GLAZING SYSTEM

1. GENERAL

DESCRIPTION:

WORK INCLUDED: Furnish all necessary materials, labor and equipment for the complete installation of aluminum framing as shown on the drawings and herein specified.

WORK NOT INCLUDED: Non-integrated structural support of the framing system, adjoining interior and / or exterior trim or flashing.

RELATED WORK SPECIFIED ELSEWHERE

QUALITY ASSURANCE:

Drawings and specifications are based on series #4600 as manufactured by Portal, Inc. Whenever substitute products are to be considered, supporting technical literature, samples, drawings and performance data shall be submitted for comparison prior bid date.

PERFORMANCE:

air infiltration shall be tested in accordance with ASTM 283, infiltration shall not exceed .06 CFM per square foot of fixed area. Water infiltration shall be tested in accordance with ASTM E 331. No water shall penetrate at test pressure of 6.25 PSF.

Structural performance shall be based on a maximum deflection of $\frac{1}{175}$ of the span when subjected to windload of 25 PSF.

2. PRODUCTS

MATERIALS:

Extrusions shall be of 6063 T5 aluminum alloy and temper per (ASTM B221 alloy G.S. 10A-T5) Exposed fasteners shall be aluminum, stainless steel or zinc plated steel in accordance with ASTM A164. Perimeter anchors shall be aluminum or steel properly isolated from the aluminum. Glazing Gaskets shall be either EPDM elastomeric or vinyl extrusions.

FINISH:

All exposed framing surfaces shall be free from scratches or other serious blemishes. Aluminum shall be given a caustic etch followed by an anodic oxide treatment to obtain (specify one of the following);

- . an architectural class 1 anodic coating conforming to Aluminum Association standard AA-M12 C22 A44 Dark bronze

or

- . a #100 clear anodic coating conforming to Aluminum Association standard AA-M12 C22 A31.

FABRICATION:

Horizontal heads, sills and intermediates shall be cut between two-piece interlocking vertical mullions and fastened to them with stainless steel screws into integral screw grooves in a concealed manner.

One-piece vertical mullions shall have concealed shear blocks attached, to support horizontals when so specified. All cuts shall be made smooth square and true. Glazing beads shall snap in place and be flush. Nominal dimensions of framing members shall have a 1-3/4" face and depth of 4-1/2" with $\frac{5}{8}$ " wide glazing pockets for $\frac{1}{4}$ " glass.

3. EXECUTION

INSTALLATION:

All framing for glass shall be set in locations as shown in the details and shall be level, plumb, square and in alignment with other work in accordance with the manufacturers installation instructions and/or approved shop drawings. All joints between the framing and the building shall be securely sealed for a watertight installation.

PROTECTION:

After installation, the general contractor shall adequately protect exposed aluminum surfaces from damage by grinding and polishing compounds, plaster, lime, acid cement or other contaminants. The general contractor shall be responsible for final cleaning.

Outdoor Up/Down Cylinder Wall Sconce By Kichler



Call Us (877) 445-4486

Outdoor Up/Down Cylinder Wall Sconce
By Kichler

Product Options

Finish: Black,
Size: 12 inches

Details

Up and down light

Dimensions

12 inches Option Backplate: Width 4.5", Height 4.88"
12 inches Option Fixture: Width 4.75", Height 12",
Depth 7", Weight 1.95Lbs

Lighting

12 inches

Lamp Type	LED
Total Lumens	2100.0
# of Bulbs	2 (Not Included)
Bulb Type	11W BR30 E26
Volts	120
Color Temp	2700 (Warm)
Average Lifespan (Hours)	15,000
CRI	80
Equivalent Halogen, CFL or LED Bulb Can Be Used	Yes



Notes:

Prepared
by:

Prepared for:
Project:
Room:
Placement:
Approval:

Additional Details

Product URL:
<https://www.lumens.com/outdoor-up-down-cylinder-wall-sconce-by-kichler-KCH2190685.html>
Rating: UL Listed Damp

ITEM#: KCH2190685



Search

 **Warwick Lowe's** Open until 9 PM

Delin
0281



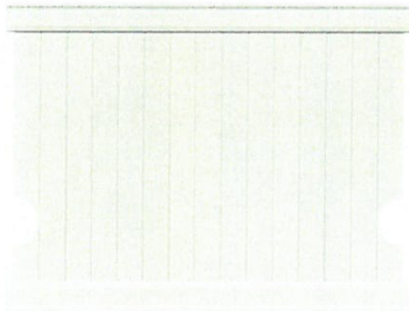
Prices, Promotions, styles, and availability may vary. Our local stores do not honor online pricing. Prices and availability of products and service subject to change without notice. Errors will be corrected where discovered, and Lowe's reserves the right to revoke any stated offer and to correct any errors, inaccuracies or omissions including after an order has been submitted.

[Building Supplies](#) / [Fencing & Gates](#) / [Vinyl Fencing](#)

Freedom Emblem 6-ft H x 8-ft W White Vinyl Fence Panel

Item #667016 | Model #73014714

[Shop Freedom](#) ★★★★★ 15



TRENDING NOW

~~\$140.79~~ **\$99.98**

[Learn now](#)



3 monthly installments of \$33.34 with Lowe's Pay [Learn How](#)


Panel comes unassembled, assembly required
Kit includes top and bottom rail, infill boards
Panel will follow the slope of your terrain - up to 1 inch per foot

Pickup

Ready by **Tue, Nov 21 (Est.)**

Delivery

As soon as **Fri, Nov 24**

 **FREE Pickup at Warwick Lowe's**


-

1

+

Add to Cart

Maximum Qty of 30

 Lifestyle/in use images; accessories are not included

[Get it installed](#)



Easy & Free Returns

Return your new, unused item in-store or ship it back to us free of charge. [Learn More](#)

Freedom Emblem 6-ft H x 8-ft W White Vinyl Fence Panel **\$99.98**

[Shop Freedom](#) ★★★★★ 15

Feedback



BEAT THE HOLIDAY RUSH. SHOP BLACK FRIDAY EVERY DAY. SHOP NOW >

Search



Warwick Lowe's

Open until 9 PM

Deliv
0281



Prices, Promotions, styles, and availability may vary. Our local stores do not honor online pricing. Prices and availability of products and services subject to change without notice. Errors will be corrected where discovered, and Lowe's reserves the right to revoke any stated offer and to correct any errors, inaccuracies or omissions including after an order has been submitted.

Building Supplies / Decking / Deck Railing Systems

CityPost Deck Mount 8-ft x 5in x 36-in Black Steel Deck Cable Rail Kit

Item #4661717 | Model #CP-8-B-D

Shop CityPost

★★★★★ 16



\$540.00

\$513.00 when you choose

5% savings on eligible purchases every day.

Learn how

OR

\$90/mo suggested

payments with 6 month special financing. Learn how



12 monthly installments of \$48.74 with Lowe's Pay Learn How

All parts included for a complete install with one purchase
Cable and hardware: marine grade 316 stainless steel
For 3-sided deck, simply order (3) kits that match side lengths

Pickup

Ready by Mon, Nov 27 (Est.)

Delivery

As soon as Mon, Nov 27

FREE Pickup at Warwick Lowe's

1

+

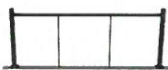
Add to Cart



Easy & Free Returns

Return your new, unused item in-store or ship it back to us free of charge. Learn More

Here are some similar items ...



CityPost Deck Mount 8-ft x 5in x 36-in Black Steel Deck Cable Rail Kit

\$540.00

Shop CityPost

★★★★★ 16

Deckorators

Contemporary cable 8-ft ...

\$93.58

CityPost Stair Deck Mount

6-ft x 5in x 36-in Black Ste...

\$510.00

DOLLE InstaRail 72-in x 1-in

x 24.5-in Stainless Steel...

\$110.86

CityPost Deck Mount 6-ft x

5in x 36-in Black Steel De...

\$510.00

Deckorators Pre-

Assembled Aluminum 6-f...

\$164.00

Trex Enhanc

x 36-in Charc

\$

Chat

- All parts included for a complete install with one purchase
- Cable and hardware: marine grade 316 stainless steel
- For 3-sided deck, simply order (3) kits that match side lengths
- Modern sleek design in budget friendly kit
- 36 inch tall railing
- Unlimited railing combinations available in the dimension guide

 **HowTo Manual**
PDF

 **Installation Manual**
PDF

 **Dimensions Guide**
PDF

Specifications

^

General

Color/Finish Family	Black	Series Name	Deck Mount
Manufacturer Color/Finish	Black	Type	Cable rail kit

Dimensions

Actual Height (Inches)	36	Common Length (Feet)	8
Actual Length (Feet)	8	Common Width (Inches)	5
Actual Width (Inches)	5	Dimensions (L x W x H)	8-ft x 5in x 36-in
Common Height (Inches)	36		

Features

Assembly	Assembly required	Minimum Opening (Inches)	3
Baluster Material	Stainless steel	Orientation	Horizontal
Balusters Included	Yes	Post Caps Included	Yes
Cable Included	Yes	Post Sleeves Included	Yes
Green or Kiln-Dried	N/A	Posts Included	Yes
Hardware Included	Yes	Pressure Treated	No
Material	Steel	Rails Included	Yes

CityPost Deck Mount 8-ft x 5in x 36-in Black Steel Deck Cable Rail Kit

\$540.00

Shop CityPost

★★★★★

16

